

# Climate Resilient Pastures:

## Establishing long-lived, multipurpose fodder, fruit & nut trees in an Upper Midwest silvopasture system

Emily Buehler O'Leary ~ North Fork Farms, Mazeppa, MN

Funded through:

USDA Sustainable Agricultural Research and Education (SARE) and  
Natural Resource Conservation Services (NRCS) Environmental Quality Incentives Program (EQIP)



United States  
Department of  
Agriculture

National Institute  
of Food and  
Agriculture

*This material is based upon work that is supported by the National Institute of Food and Agriculture, U.S. Department of Agriculture, through the North Central Region SARE program under project number FNC24-1404. USDA is an equal opportunity employer and service provider. Any opinions, findings, conclusions, or recommendations expressed in this publication are those of the author(s) and do not necessarily reflect the view of the U.S. Department of Agriculture.*





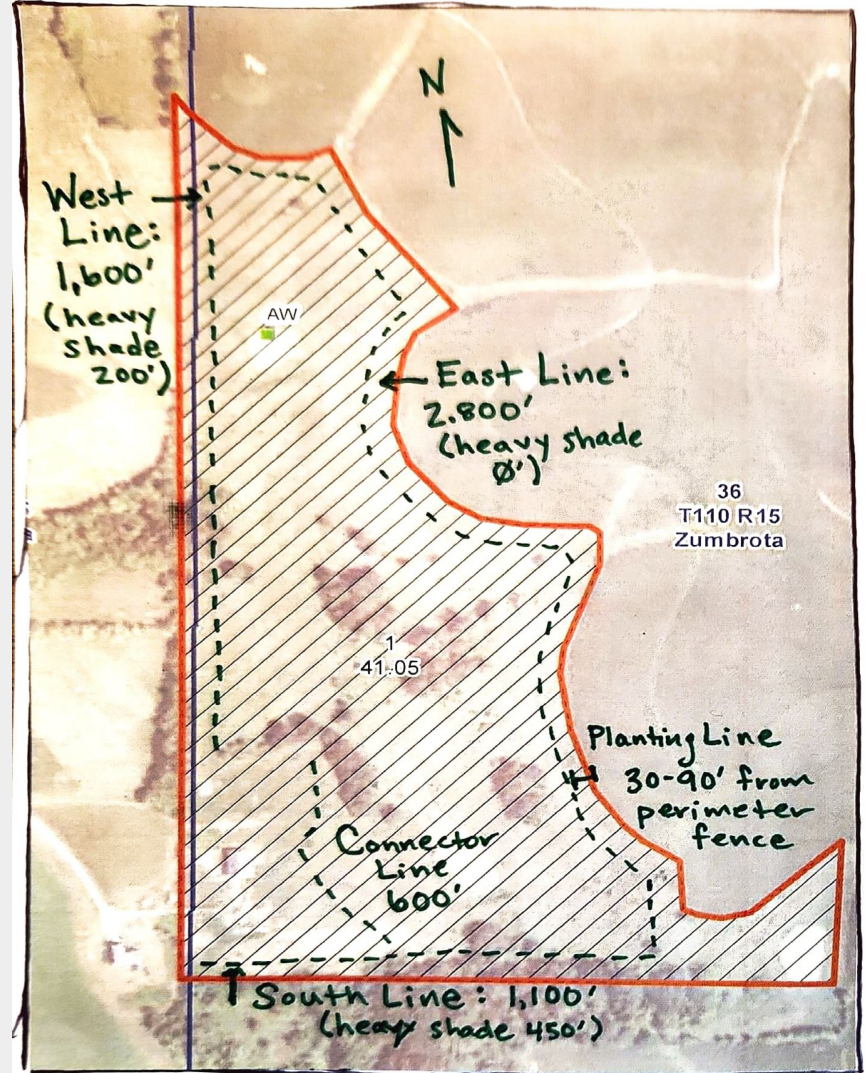
- Southeastern Minnesota
- Zone 4b
- 50ac, 45ac in pasture
- Partial oak savanna
- Grassfed beef & pastured pork from birth to finish
- 8-12 cow-calf pairs
- 4 sows with feeders



# Added 600 trees in 2024

Drop in-place leaf fodder, tree hay & silage, fruit & nut mast:

- “Red” Mulberry
- Northern Pecan
- Chestnut
- Shagbark Hickory
- Hazelnut
- Apple
- Pear
- Serviceberry
- Persimmon







# The planting:

- Perimeter loop 60-100ft off external fence
- Planted 2/3s red mulberry & other species in pollinating groups
- Wire cage protection + polywire protection lane to protect from browsing & create additional paddocks
- Mulch to be added this winter

# Funding for Project

## NRCS EQIP:

\$29/tree with woven cage protection for HU populations in Minnesota (payment for completed practices after being certified)

- Trees
- Posts
- Cages
- Planting Labor

## SARE:

Up to \$15,000 to explore sustainable farming solutions and education opportunities (grant with budgeted expenses & required reporting)

- Polywire protection materials & labor
- Mulching equipment & labor
- Watering equipment & labor
- Leaf fodder nutrition sampling
- Outreach



# What's Next

Yr 2 (2025) - Collect leaf-fodder samples & report feed nutritional values

Yr 3-5 (2026-2028) - Track survival & growth rates (production for some species)

Yr 6+ (2029+) - Plant a second loop with seedlings from thriving producers





## Contact:

Emily Buehler O'Leary

North Fork Farms

[www.northforkfarmsmn.com](http://www.northforkfarmsmn.com)

embuehler@yahoo.com