

Forage Sorghum

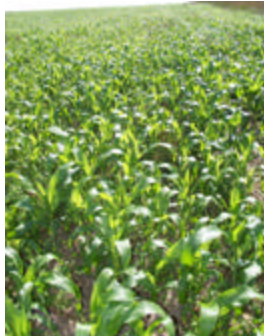
Can it Provide a Profitable Forage System?

(When followed by a winter grain for an early spring forage harvest.)

How has it faired in a *normal* NY growing season?



Alternative crops that yield well at a reasonable cost of production are needed for expanding cropping options on less than optimal ground. This SARE supported study is chronicling 4 farm's experience with sorghum, a warm season crop. It will be followed by a winter grain to maximize production. Sorghum appears to be a reasonable substitute for corn silage offering similar yields and nutrition at a lower cost. Sorghum has not been widely grown in the NE and we will share what we have learned about its management for successful production. We will evaluate whether this cropping combination is cost effective with consistent performance, adequate yield and feed quality.



This project has allowed us to gain experience with a crop that has not traditionally been grown in the Northeast - sorghum. Sorghum appears to be a reasonable substitute for corn silage offering similar yields, at a lower cost and an equally efficient harvest as a single chop system that can substitute for corn silage with nearly the same nutrition.

SEPT 18, 2013 5 PM TO 7:30 PM
Dave Stow. 1223 Breesport-N. Chemung Rd.
Lowman, NY 14861

SEPT 19, 2013 5 PM TO 7:30 PM
Dennis Birdsall. 7303 State Route 41
Homer, NY 13077

At these twilight meetings:

- Enjoy a light dinner
- See the sorghum crop for yourself
- Discussion with King's agronomist
- Farmer Cooperators will share their experience.

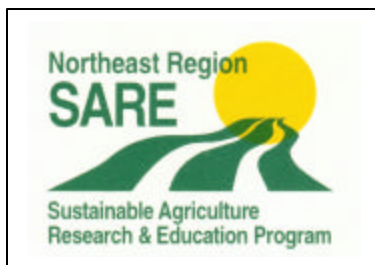
*****Pre-registration is requested to help with meal planning. *****There is no charge for these meetings.

RSVP: Sharon VanDeuson (607) 753-5078 or shv7@cornell.edu

For information contact Janice Degni, (607) 753-5215 or jgd3@cornell.edu.

"Forage Sorghum"

Viabile Crop? - Come and See the Crop!



**Thank you to our
co-sponsors.**

This project is supported by
the Northeast Sustainable
Agriculture Research and
Education (SARE) program.



SARE is a program the National Institute of Food and Agriculture, U.S. Department of Agriculture.



Cornell University
Cooperative Extension
South Central New York Dairy & Field Crops Team

60 Central Avenue
Cortland, NY 13045
Phone: (607) 753-5077
<http://scnydfc.cce.cornell.edu>