



Andrej Romanovsky, Partner
Nancy Romanovsky, Partner

We operate a Douglas fir tree farm and develop forestland properties in Washington State. We grow trees on extended rotation. We help young people discover tree farming through a summer fellowship program.

July 21, 2016, 5:30-8:00 PM

CO-PLANTING WESTERN REDCEDAR WITH SITKA SPRUCE **Tour of Research Plantation at Tree Fever Tree Farm**

Organized by Washington Farm Forestry Association, Grays Harbor Chapter
Chapter President: Howard Wilson

with participation of Grays Harbor Conservation District and Washington Forest Protection Association

Plantation: The 7-ac western redcedar (WRC) research plantation was established in March of 2015. In this plantation, WRC seedlings were protected from deer damage in three modes: 1) by a Vexar tube attached to a bamboo stake (traditional mode; marked with yellow flags); 2) by co-planting (in the same hole) a WRC seedling with a Sitka spruce seedling (experimental mode; blue flags); or 3) by having no protection at all (control; red flags). All three modes were intermixed through the plantation.



Study Team: David Houk (Grays Harbor Conservation District, Service Forester)

Dr. Andrej Romanovsky (Tree Fever, Partner)

Dr. Georg Ziegltrum (Washington Forest Protection Association,
Animal Damage Control Program Supervisor)

Consultant

Investigator

*Technical
Advisor*

Tour Goal: The participants will have a chance to walk through the areas with no to light deer browsing and areas with heavy deer browsing and observe the damage to WRC trees in different protection modes.

5:30 PM: **Meet and greet** at Tree Fever (see page 2 for directions)

6:00 PM: **Introduction:** David Houk

6:10 PM: **Walking tour of the plantation – sites with low damage:** Andrej Romanovsky

6:40 PM: **Move by cars to the sites with high damage**

7:00 PM: **Walking tour – sites with high damage; study results and discussion:** Andrej Romanovsky

7:30 PM: **Animal damage to young plantations – Q & A session:** Georg Ziegltrum

8:00 PM: **Departure**

This study is supported by the National Institute of Food and Agriculture (award 2015-38640-23779), through the Western Sustainable Agriculture Research and Education program (subaward FW14-007).



Increasing forestland value through active forest management and conservation

Tree Fever: Forestland Conservation and Development

7818 W. Adobe Drive Glendale, AZ 85308 • TreeFeverFarm@gmail.com • 480 518-7930

Directions to Tree Fever

Google Maps (but not other search engines) show Tree Fever at this address:

1509 Satsop Rd W, Montesano, WA 98563



From North: Take I-5 South to exit 104 and take Hwy-101 toward Aberdeen. When Hwy-101 breaks off toward Shelton, stay on Hwy-8 toward Aberdeen. Hwy-8 will become Hwy-12. After crossing the Satsop River, exit in ~1 mile to the right (North) at the Brady/Schafer State Park exit. This exit becomes Middle Satsop Road. Stay on this road for ~3 miles and turn left on West Satsop Road. In 5 miles, this paved county road ends with a gate to Tree Fever. After the gate, the road becomes a private gravel road. Go to the end of this road (0.7 mile) to meeting place.

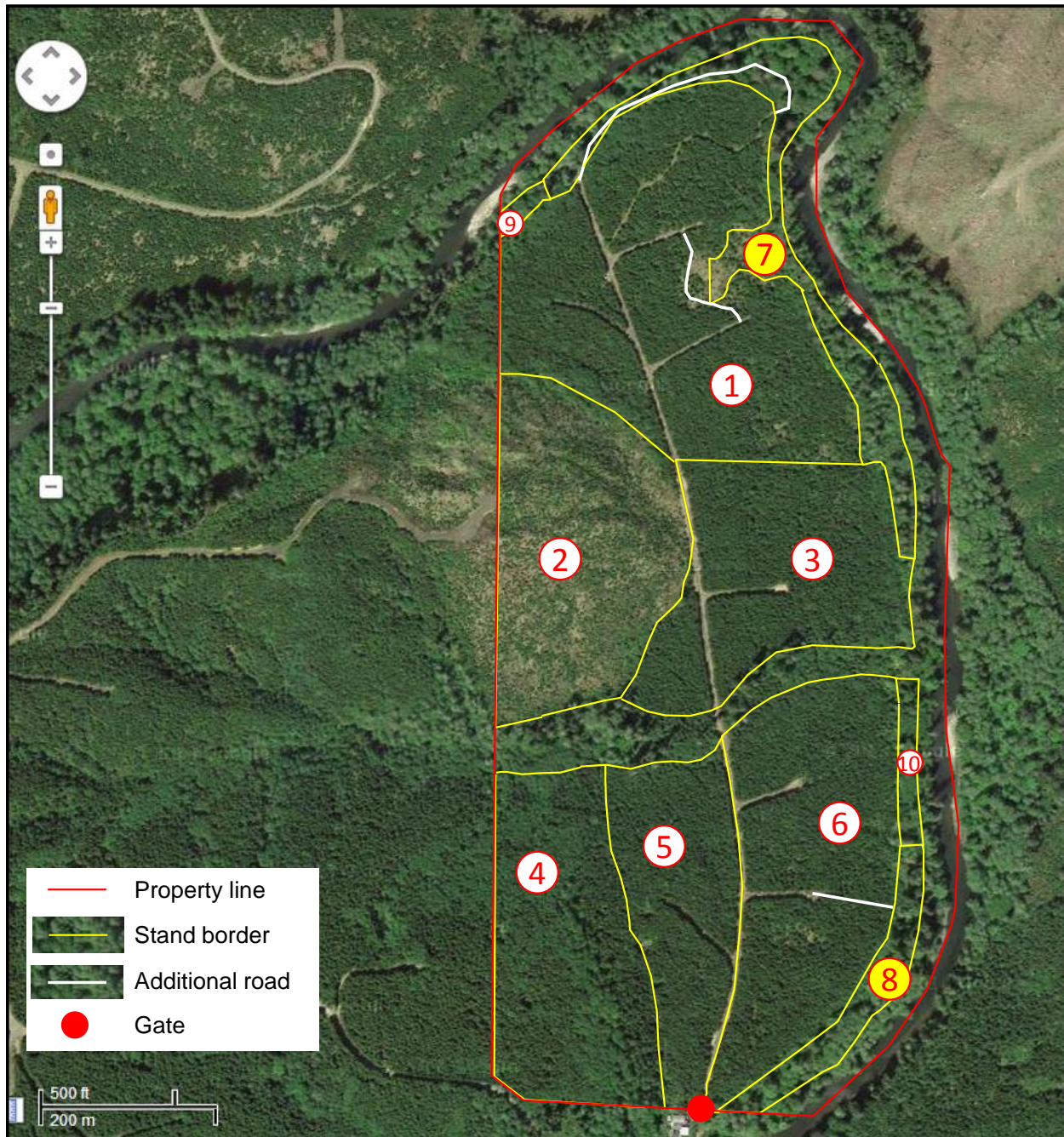
From South: Take I-5 North to exit 88 and take Hwy-12 toward Aberdeen. After crossing the Satsop River, exit in ~1 mile to the right (North) at the Brady/Schafer State Park exit. The exit becomes Middle Satsop Road. Stay on this road for ~3 miles and turn left on West Satsop Road. In 5 miles, this paved county road ends with a gate to Tree Fever. After the gate, the road becomes a private gravel road. Go to the end of this road (0.7 mile) to meeting place and park.

From Aberdeen: Take Hwy-12 to the Brady/Schafer State Park exit and exit to the left (North). The exit becomes Middle Satsop Road. Stay on this road for ~3 miles and turn left on West Satsop Road. In 5 miles, this paved county road ends with a gate to Tree Fever. After the gate, the road becomes a private gravel road. Go to the end of this road (0.7 mile) to meeting place and park on either side of the road.

Help: If lost, call Howard Wilson, 253 579-2489.

Tree Fever Production Stands

While driving on Tree Fever and taking the walking tour, you can see the following stands.



#	Species	Parcel Acres	Year Planted	Current Age	Year Thinned
1	Douglas Fir	31	2001	15	2014
2	Douglas Fir	16	2006	10	2016, pending
3	Douglas Fir	15	1999	17	2014
4	Douglas Fir	15	1993	23	2014, late thinning
5	Douglas Fir	10	1999	17	2014
6	Douglas Fir	19	1999	17	2013
7, 8	Western Redcedar	7	2015	1	-
9, 10	Red Alder	1	Self-seeded	15-17	2014

Thank for visiting our tree farm! Andrej and Nancy