

HAY FOR SALE



Willow Creek Winter Wheat, Grass, Grass/Alfalfa
1st and 2nd cutting, irrigated, net wrapped.
Phone (406) 562-3645, Augusta, MT

Montana Agricultural Professionals receive training

By Gadi V.P. Reddy and Anamika Sharma, Montana State University, Western Triangle Agricultural Research Center, Conrad, Montana



GEIB RED ANGUS

6th Annual Private Treaty
Registered Red Angus Bull Sale

Sons of: Sleep Easy, Feddes Patriot, 5L Independence, Brown JYJ Redemption, Profit Builder, HXC Declaration, Leland Marksman, GMRA Epic, and other sires

Gentle Dispositions

Please call, text or email for more information.

406-480-1148

geibredangus@nemont.net www.geibredangus.com

A professional development program (PDP) workshop was conducted at the Holiday Inn, Great Falls from March 7 to 8, 2019. The project was funded by Western Sustainable Agriculture Research & Education (WSARE). The purpose of this workshop was to build agricultural professional's understanding of pheromone-based monitoring techniques in order to incorporate them into current integrated pest management programs.

The workshop was attended by 35 people including 10 speakers. The workshop agenda is available at the link, <http://agresearch.montana.edu/wtarc/fielddays-pdf/2019WesternSAREPDP.pdf>. Dr. Gadi V.P. Reddy as a principal investigator, welcomed the speakers and attendees and spoke about the importance of the workshop. The pre-received presentations were printed in color in the form of handouts to allow the participants to take notes and were placed in folders provided to each participant. At the conclusion of the workshop, all the attendees received a participation certificate.

Dr. Fabian Menalled, Western SARE Regional Coordinator highlighted SARE programs and also some of the research work that he and his team has been doing on pollinator diversity.

Dr. David Weaver, Professor of Entomology from Montana State University spoke about efforts and research done on pheromone trapping for wheat stem sawfly. Although pheromone compounds were identified in 2002, the pheromone baited traps have not been exploited fully in managing the pest. The field experiments conducted at Western Triangle Ag Research Center and Bozeman have indicated that yellow colored traps baited with pheromone attracted higher number of adults than the traps with other colors. He also indicated the issues encountered during the entire process of development of an effective pheromone trap for wheat stem sawfly and future perspective. He also presented an app (iPIPE) developed for monitoring the wheat stem sawfly population by processing the data such as location, trap and sweep numbers, and postharvest stub count.

Dr. Maya Evenden, Professor from University of Alberta, Edmonton, Canada described the efforts developing trapping methods for pea leaf weevil, bertha armyworm, cutworms and wheat midge. In Canadian Prairies, the importance and interest of using pheromone traps is increasing. Ultimately, these traps will help us not only for monitoring pest populations but also can be incorporated as one of the tools in pest management programs. The results shown by Dr. Evenden indicated that plant volatiles can be effective to monitor pea leaf weevil when used with pheromone traps. Whereas wheat midge traps can predict population density but not the crop damage. Armyworm and cutworm food baits were tried, and both sex responded differently. She also raised the concern that the addition of semiochemicals also attract non-target insects, such as pollinators.

Dr. Boyd Mori, Entomologist from Agriculture and Agri-Food Canada, Saskatoon, Canada presented monitoring methods for the insect pests of quinoa. Dr. Boyd indicated goosefoot groundling moth, leaf-mining/stem-boring fly, bertha armyworm, and mirid bugs as major insect pests of quinoa in Canada. Other minor insect pests are flea beetles, silver-banded moth, and a leaf miner. He indicated pheromone traps can be a good monitoring tool for insect pests

CONTINUED ON PAGE A21



New, Remanufactured & Recycled
Ag Replacement Parts



5 LOCATIONS NATIONWIDE: Montana • Kansas • South Dakota • California • South Carolina

Qwik Fit Cab Upholstery Kits

- Fast & easy to install
- Removable
- No messy glue or adhesive
- Wrinkle free



Give your cab an update and ask your salesperson about Qwik Fit Kits. We stock a wide variety of kits for many makes & models.

Planetary Gear Reduction Starter

For John Deere® Diesel Engines
Our Planetary Gear Reduction Starter does everything your current starter does ...
... BUT BETTER!

- European engineering
- Internal planetary
- Higher torque
- Faster rotation & starting
- Fits multiple applications
- Greater dependability
- 4 KW, 12-Volt
- No core charge
- No special tool needed to install



\$275
#AMX34112

800.320.4784
AbileneMachine.com
AbileneMachine®
Ag Replacement Parts

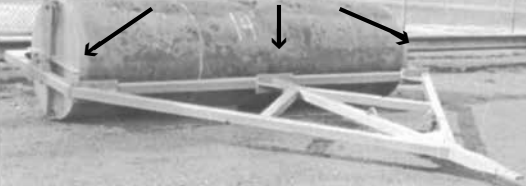


LAND ROLLERS

HEAVY DUTY PULSE CROP ROLLER SPECIAL!

Single Rollers

Extra Heavy Duty - 42"x 7/8" pipe
Optional Hydraulic Cutting Blade for gopher and badger mound leveling on single or tandem rollers



★ 12-ft. ★ 14-ft. ★ 16-ft. ★ 18-ft. ★ 20-ft.

20-ft. 48" diameter x 1/2" thick
\$11,000

Tandem Rollers



Fisher Metal can more than double the size of your single roller!

Tandem 40-ft. 48" diameter 1/2" thick with mechanical transport
\$23,500

FUEL STORAGE ~ SINGLE WALL DOUBLE WALL ~ FUEL SYSTEMS



Variety of pumps/meters from 18 GPM to 100 GPM
1" to 1-1/2" discharge hose with spring rewind reels
Service Body Tanks • Galvanized Water Cisterns

Horizontal Fuel Tanks from 500 to 6000 gallons
Vertical Fuel Tanks 2000 to 10,000 gallons
Turnkey System features: Tank Mounting Base
Pump Stand • Fuel Filter/Level Gauge
Required Venting and Valves

ALL TANKS are UL 142 Certified — DOUBLE WALL
TANKS meet SPCC Secondary Containment Rules

Fisher Metal Products

622-5233 Fort Benton 1-800-449-5233

Montana Agricultural Professionals receive training

CONTINUED FROM PAGE A20

of quinoa in future. Quinoa has been a new crop in Montana and has been grown under dry land conditions at the research center in Conrad for the last two years. This crop requires moisture so it will be grown under irrigated conditions during the summer of 2019.

Dr. Janet Knodel, Professor & Extension Entomologist from North Dakota State University, Fargo delivered information on the use of pheromone traps being used to monitor the insect pests of field crops in North Dakota. She spoke about wheat midge, bollworm and cotton worm, diamondback moth as insect pests of wheat and bertha armyworm, Swede midge, flea beetles as insect pests of canola. She presented population data of these insect pests of wheat and canola. She also presented data on monitoring of insect pests of sunflower crop. She spoke about increased population of banded sunflower moths and monitoring by using pheromone traps. She also indicated that populations of other two moths, arthuri sunflower moth and sun flower moth are increasing on sunflower crop.

Dr. John Gavloski, Entomologist from Manitoba Agriculture, Canada presented information on using pheromones for monitoring insect pests in canola particularly in Manitoba provinces. He discussed the diamondback moth, bertha armyworm, Swede midge, canola flower midge, flea beetles, and cabbage seedpod weevil. He spoke about various traps used to monitor these insect pests of canola in Canada. He mentioned about issue of attracting bumble bees in the traps. He also made participants aware that the population collected by traps sometimes only indicates the presence of insect pests and might not provide correct population data, hence a keen observation is required to monitor the insect pest. He also mentioned that a spray decision cannot be taken just on the basis of population collected in traps.

Dr. Christine Noronha, Entomologist from Agriculture and Agri-Food Canada in Charlottetown, Prince Edward Island, Canada presented the information on research being done on the monitoring methods of click beetles. She spoke on greater length about use of light traps to collect click beetles, use of pheromone granules for mating disruption in click beetles, and movement of wireworms horizontally and vertically in soil throughout the year. Her presentation enlightened the participants about lesser known behavior of wireworms. She also talked about a crop rotation of brown mustard, buckwheat and barley as possible management tactic to control wireworms.

Dr. Gadi V.P. Reddy and Dr. Anamika Sharma, both entomologists/ecologists from Western Triangle Agricultural Research Center, gave an outline on the theory, types and applications of pheromones. This included some of the field work done at the University of Guam and Montana State University. Dr. Sharma presented information about basics of pheromones, their classification, extraction, preparation of synthetic pheromones, types of traps, and use of traps. Dr. Reddy demonstrated several relevant examples of usage of various type of pheromone traps to monitor insect pests.

Dr. Mike Ivie, Associate Professor of Entomology from Montana State University spoke about monitoring tools and techniques for insect pests in Northern Plains. This included demonstration of various trap designs and their practical use. He also elaborated about uses of killing agents, and correct manner to use sweep net. He explained the use of variety of traps for different insects.

Dr. Kevin Wanner, Extension Entomologist presented information on the research and extension work done on alfalfa weevil monitoring in the Northern Great Plains. Dr. Wanner gave some thoughts on the possible identification of pheromones for alfalfa weevil. He also spoke about summer dormancy and degree day model to study the population dynamics of alfalfa weevil and their monitoring.

This day and half workshop received high evaluation scores. Thanks to the staff of WTARC and highly qualified speakers that spoke about insect pests significant to Montana crop production.

#####

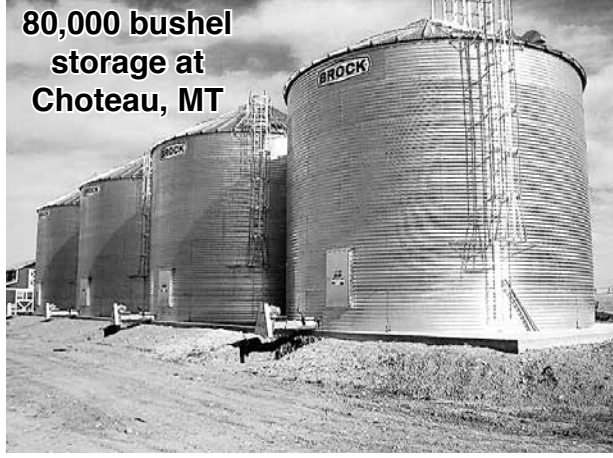
The slogan "Nothing Runs Like A Deere" was originally created for a snowmobile line but is still used today as part of the John Deere brand.

#####

The Cacao tree can live for over 200 years. But, it only produces for 25 years.

RYDELLE ENTERPRISES LLC 406-288-3883

80,000 bushel storage at Choteau, MT



Marion L. Jones
406-544-4766, cell

- Sale and erection of Brock grain storage
- Sale and erection of grain legs, conveyors, and towers by Brock
- Complete millwright and concrete service
- Projects completed in Montana, Idaho and Washington

LEO & IRENE ERHART TRUST

AUCTION

April 27, 2019

10:00 a.m. Lunch Available

AUCTION WILL BE HELD 1 MILE NORTH OF BELLE FOURCHE, SD ON HIGHWAY 85. WATCH FOR AUCTION SIGNS.

CARS & EQUIPMENT

1932 Chevy Coupe with 216 engine Job# 32-567, Body# J157 (very nice car)—1941 Buick Special model 41 Style 41-4409 straight 8 cylinder with 2 carbs—1947 Chevrolet Stylemaster 2 door Sedan #47-1211—1970 Ford LTD Brougham 4 door, 39000 miles, 351 Windsor engine #0P64H128979—1961 Dodge 500 Truck with 18 foot Grain Box & Hoist—2017 Kawasaki Mule 4010 4X4 with cloth cab & low hours—1949 IH Farmall Cub, restored with rear seeder, fertilizer attached # 74532—Case 990 Diesel with Westerndorf Loader & Bucket--Pallet Forks—JD Z445 Zero Turn Ezee Track 54 inch deck with low hours & mulcher—JD 140 Hydro Garden Tractor with mower deck—JD 3 ft. Roto Tiller—Sno-Co Yard Trailer—Cub Cadet two stage 526 SWE Snow Blower with power steering & weather cover, 3 hours—InTek 6 HP DR Trimmer—Mower—Scarafier 3 point 8 ft Rear Blade Road Leveler—100 gallon Pickup fuel tank with electric metered pump

SHOP EQUIPMENT

Waterloo Stacking Tool Chest—KO Lee Co model K403HM #6113 Valve Grinder with stones, seaters, Valve Knurlers & more—Belsaw model 10552 Sharpener—Masterforce Babbet Bearing Reamer—Chicago Electric Parts Washer—LA Kerosene Washer—KO Lee Seat Grinder model P302RB—Waterliet Valve Grinding Knurls & Seat Cutter Set—Albertson Seat Grinder—Snap-on Battery Tester—Central Hydraulic 4 ton Porta Power—(3) KAR Parts Bin Full—(4) Bolt Bins with New Stock—Branick Auto Flate Tire Machine—2 Ton Cherry Picker—12 Bays of Steel Shelving--Blackhawk Bubble Balancer—Central Pneumatic Sand Blaster—Snap-On Tool Center—Sioux Polisher-Buffer—Viking 250 GM Mig Welder—Miller 225 Amp Arc Welder—Dan Mar Equipment Stone 4 Post Auto Lift with Drive on Ramps—Armature Press—(2) Floor Jacks—Mechanical Floor Jack--Bottle Jacks—Oxy-Acetylene Cutting Torch on Wheels—Rockwell Radial Arm Saw—Packard Metal Hacksaw #974113—Buffalo Tools Bench model Drill Press—Mobile Welding Table with Vise—Cement Mixer, Electric—Headlight Alignment Station—Cub Cadet Lawn Broom—Sears Craftsman 10 inch Table Saw—Red & White Air Compressor—4 Wheeler Sprayer—Howard 4 ft. 3 point Roto Tiller—2 Section Drag Harrow—4 ft. Garden Roller—165 gallon Poly Tank—Cub Cadet 125 (motor needs repair)—150 gallon Pickup Tank-2 gas-Boy Pumps—Ammoco Honing Machine with hones—Trailer with Ice House—Air Tanks-(16) Fishing Poles—Several Reels & Tack—PLUS MORE

HANDTOOLS & OLD STOCK

There will be 1000's of parts from old stock to replacement parts—Generators, Starters, Gaskets, Shackles, Springs, 216 Chevy 6 cylinder engine complete ready to run—Heads & Manifolds, 216 engine blocks for Chevy's—Wisconsin 4 cylinder air cooled stationary engine—several used tires plus new, old stock—several cans & barrels—miscellaneous oil, grease & garden supplies— SEVERAL PALLETS OF PARTS-- heads—Handyman Jack—Draw Bars—Many Log Chains—Boomers—Homelite Chain Saw—Truck & Pickup Chains—Pipe Benders—Shovels—Rakes—Bars—Pipe Wrenches—Socket Sets—Bars—Crescent Wrenches—Plus More Tools

COLLECTIBLES

2 Garrett Deepseeker Treasure Hunters—Steel Implement Seat—Old Signs—Old Tools—Grease Cans—Oil Cans—GI Cans—5 gallon Can—Barrels—Ice Tongs—Cistern pump—Horse-drawn 2 way Plow—Large Old Safe—54-55 Chevy 1 ton Box—Insulators—Paymaster Check Writer—Milk Bottles—Kerosene Lamps—PLUS MORE

HOUSEHOLD

Serpentine Front Desk (old)—Metal Office Desk—Guardian Electric Easy Chair (like new)—Kitchen Table & 4 Chairs—Pine Dresser—Metal Filing Cabinet—Panasonic Microwave—Ward Console Radio/Record Player—Twin size Serta Mattress (new)—Dresser set of 3-MW Home Safe—Single Bedstead—Office Chair—Bookcase—Whirlpool Freezer—PLUS MORE

OWNER: LEO & IRENE ERHART TRUST—PIONEER BANK & TRUST, TRUSTEE

AUCTIONEERS NOTE: Leo had a soft spot for old vehicles and had the tools to nurse them back. This is a clean auction with 1000's of parts & tools! We hope to see you the 27th at the Erhart auction!

TERMS: CASH OR BANKABLE CHECKSALES TAX COLLECTED
NOT REPOSNSIBLE FOR ACCIDENTS

--- Sale Conducted by --

MILLS AUCTION SERVICE

**BOX 128 BOYES, MT 59316
406-427-5317, Cell 605-645-9611**

www.mills-auction.com