

Sustainable Agriculture Research and Education (SARE)
Cover Cropping for Plant Parasitic Nematode Management in Tomato
Cropping Systems in Hawaii

John J. McHugh, Jr.¹, Susan Schenck², J. Vana³ & L. Constantinides¹



Figure 1. Sunn hemp plot.

¹Crop Care Hawaii, LLC, Aiea, HI

²Hawaii Agricultural Research Center, Aiea, HI

³Waialua Farmers Cooperative, Waialua, HI

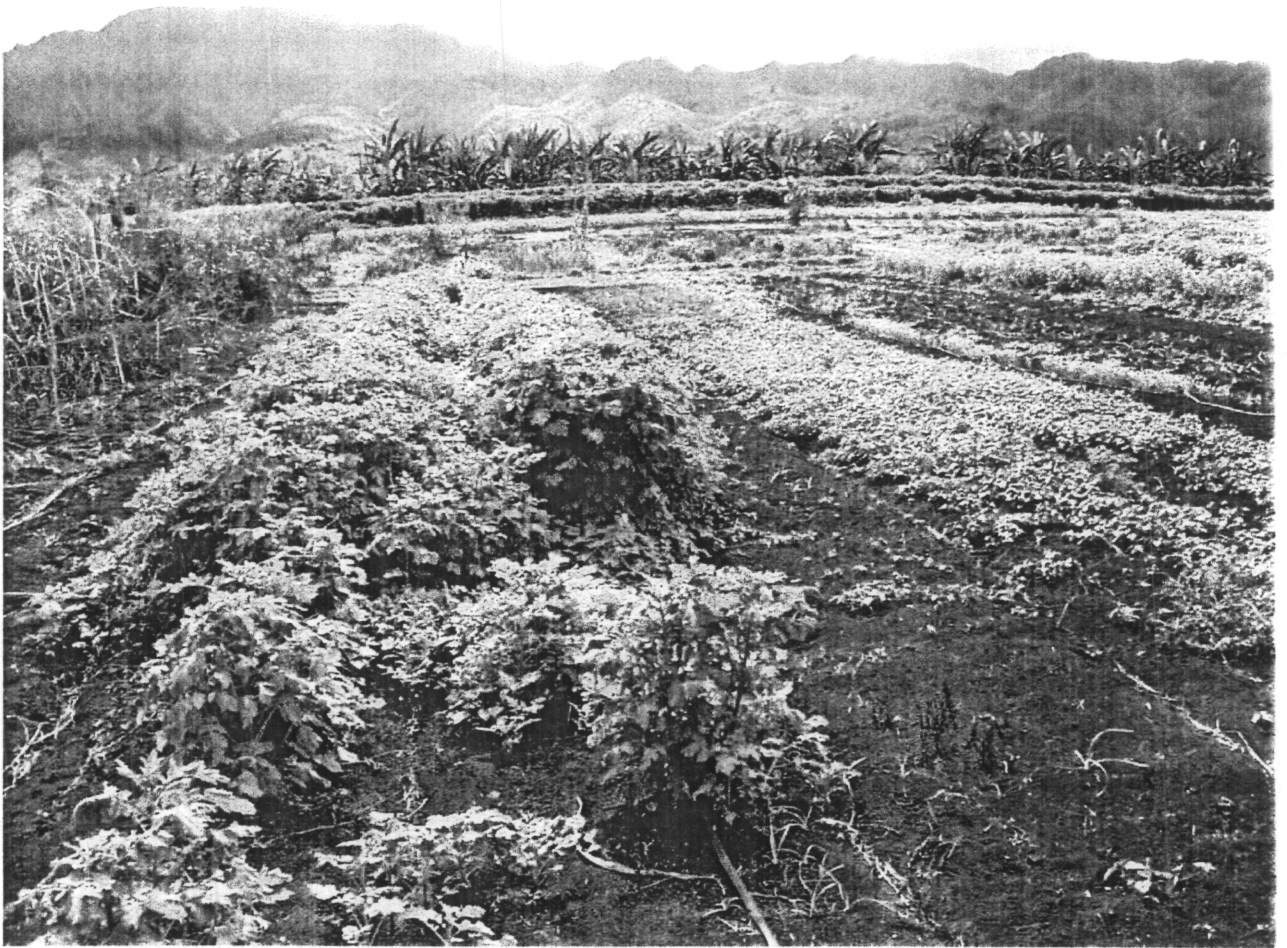


Figure 2. Yellow mustard plot.



Figure 3. Cover crop plots views: yellow mustard (foreground), bare ground fallow (middle), Sunn hemp (background).