

SARE / AFT FIELD  
DAY @ WAIALUA

---

---

---

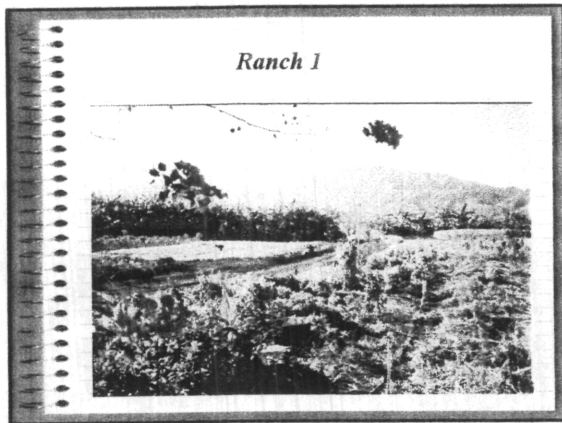
---

---

---

---

---



Test site location

---

---

---

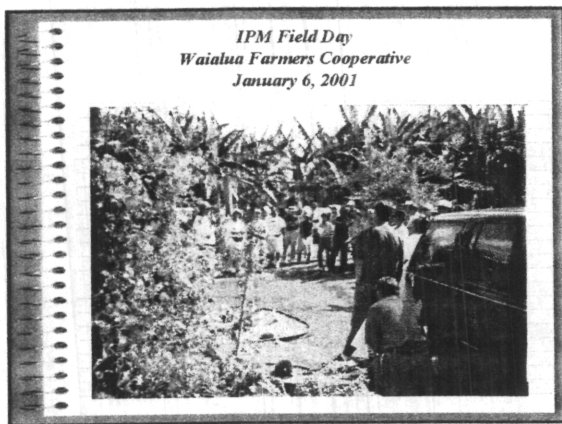
---

---

---

---

---



Growers & Community  
attendees

---

---

---

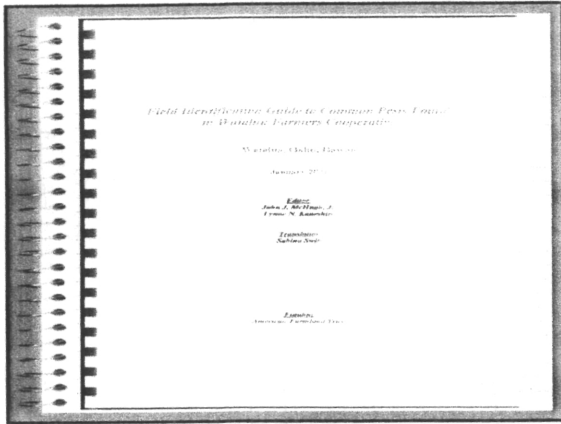
---

---

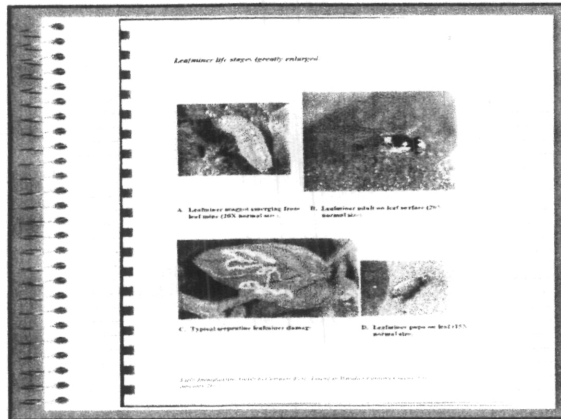
---

---

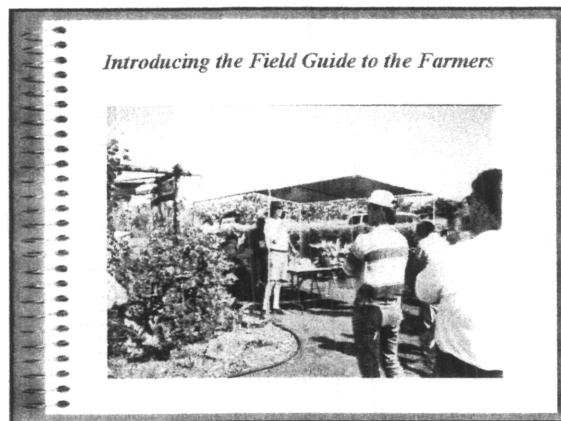
---



Field ID pest guide  
for Waialua Farmers



Common pests found  
in Coop fields



Discussion of guide,  
SARE & AFT project  
with participants at  
Field Day

Monitoring Methods



Monitoring & Scouting  
for IPM

Cover Crops



Use of cover crops,  
Cover crops standing.  
Tomatoes planted in  
4/01.

Waialua and Haleiwa Farmers



Growers at Field Day

*Waialua and Kunia Farmers*



*Summary for IPM in Waialua*

1. Understanding of agroecosystem.
2. Proper identification of crop pests.
3. Regular scouting and monitoring for pests.
4. Alternative control methods.
5. Timely use of low risk, highly effective pesticides.

Growers.

---

---

---

---

---

---

---

Highlights of Field Day -  
January 6, 2001.

---

---

---

---

---

---

---