

Appendix 1: Scouting results 2007, 2008

Results 2007

	PTC						Control	
	Hubbard		Burgess		Avalon		Avalon	
Date	SB	CB	SB	CB	SB	CB	SB	CB
7/5/07	0	0	0	0	0	0	0	0
7/10/07	0	0	0	0	0	0	0	0
7/16/07	0	0	0	0	0	0	0	0
7/20/07	0	0	0	0	0	0	0	0
7/29/07	0	0	0	0	0	0	0	0
8/3/07	0	0	0	1/5	0	0	0	0
8/9/07	0	1	0	3	0	0	0	0

PTC: Perimeter Trap Crop

SB: Squash bug egg masses (average per 5 scouted plants)

CB: Cucumber beetles (average per 5 scouted plants)

Results 2008

	Burgess		Avalon		Control Avalon	
Date	SB	CB	SB	CB	SB	CB
7/21/2008	0.00	0.00	0.00	0.00	0.00	0.00
7/31/2008	0.00	0.00	0.00	0.00	0.00	0.00
8/7/2008	0.00	0.20	0.00	0.00	0.00	0.00
8/13/2008	0.00	1.20	0.00	0.00	0.00	0.00
8/25/2008	0.00	1.00	0.00	0	0.00	0.00
8/28/2008	0.00	0.20	0.00	0	0.00	0.00

PTC: Perimeter Trap Crop

SB: Squash bug egg masses (average per 5 scouted plants)

CB: Cucumber beetles (average per 5 scouted plants)

Notes:

August 7: Blossoms in PTC, no blossoms yet in market crops

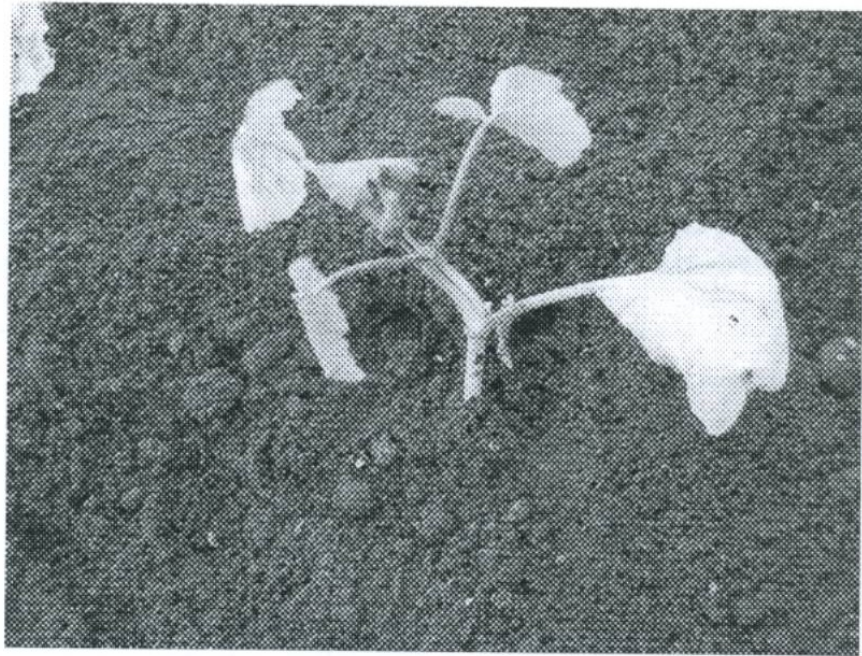
August 13: Blossoms in PTC, no blossoms in market crop. Beetles attracted to blossom. Vines are running and intertwined. Burning would severely compromise experiment. Plants look extremely healthy

August 25: Plants look extremely healthy. No feeding damage found. Intertwining continued. Hard to distinguish which part is a part of which plant (see pictures)

August 28: Plants are intertwined - difficult if not impossible to scout

Appendix 2: Pictures

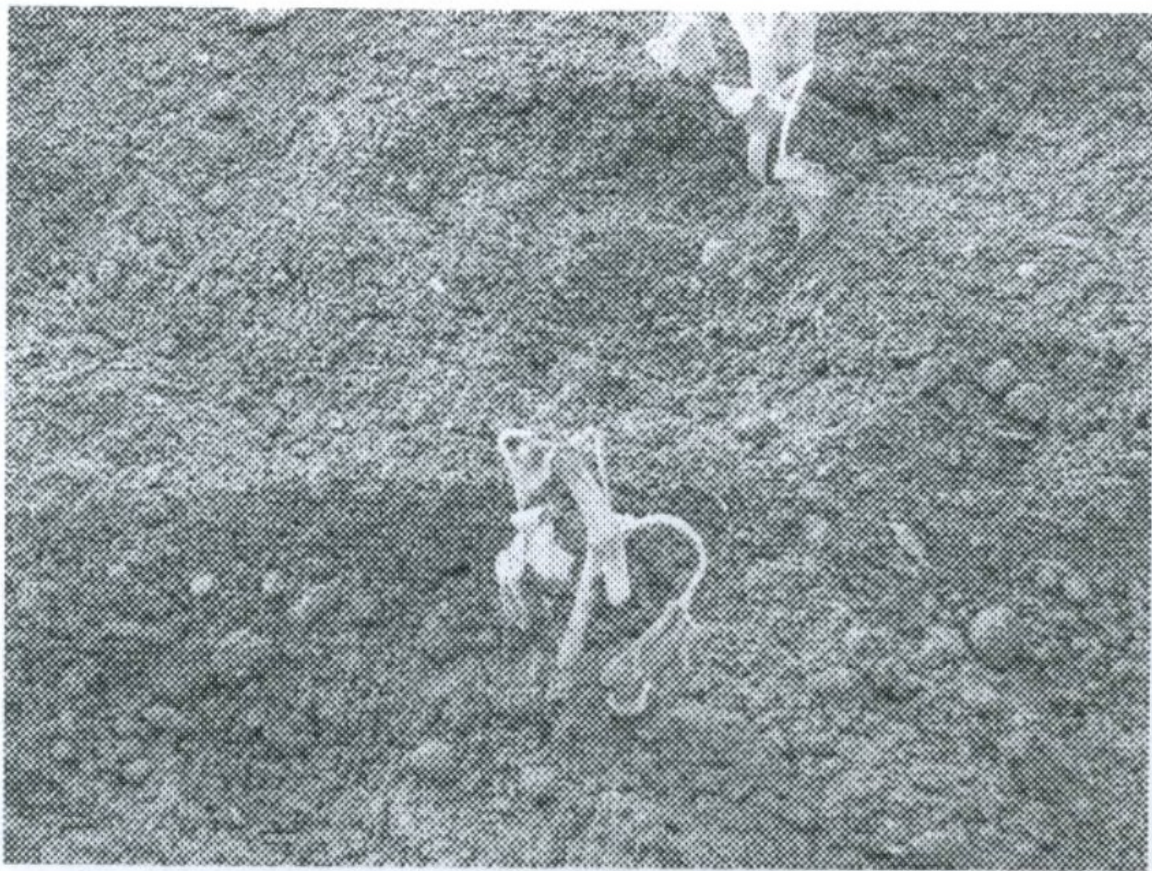
2007 Flaming experiment



Picture 1: Blue Hubbard immediately after flaming



Picture 2: Blue Hubbard one day after flaming

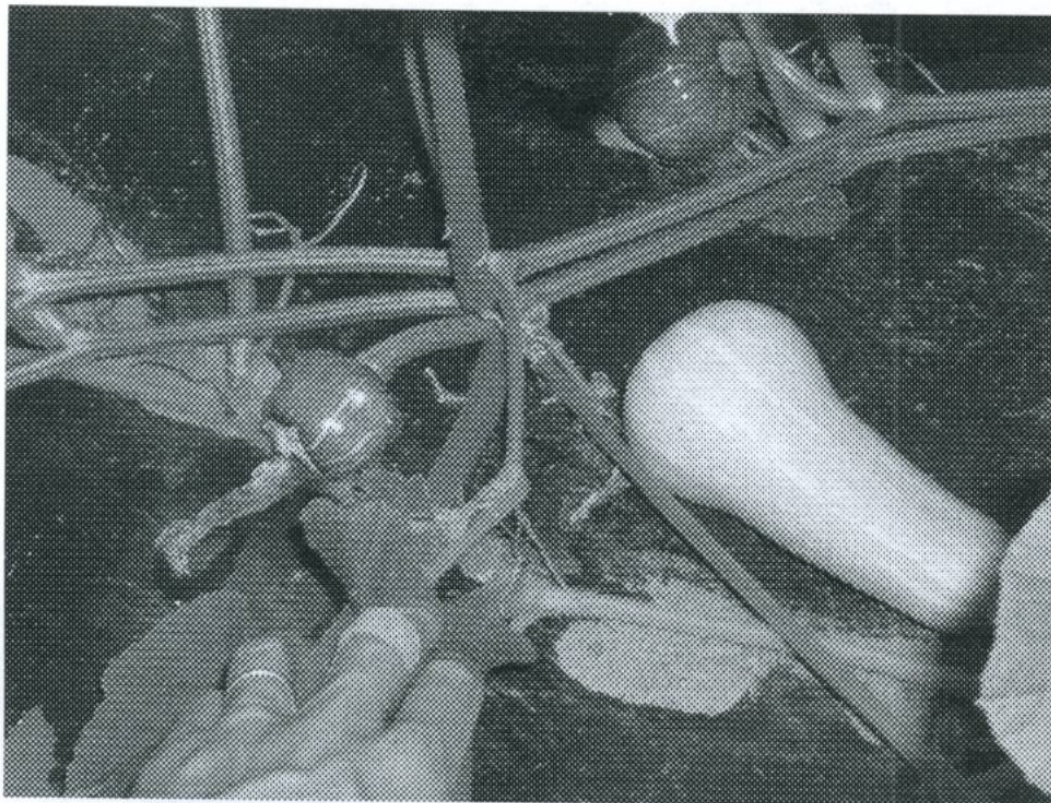


Picture 3: Blue Hubbard 3 days after flaming

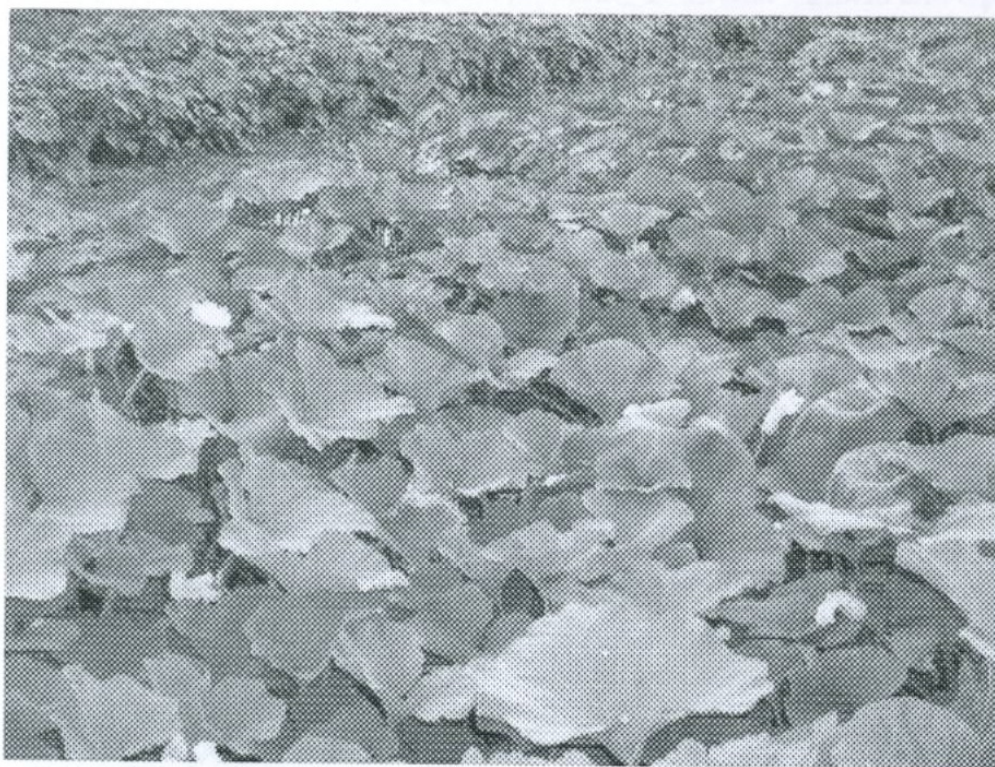
Planting of winter squash transplants for experiment, July 2, 2007



2008 Planting



Intertwined trap crop and market crop (August 25)



Experimental field (August 25)



Clipped fruits - October 16, 2008