

Figures and Tables relevant to Objective 1

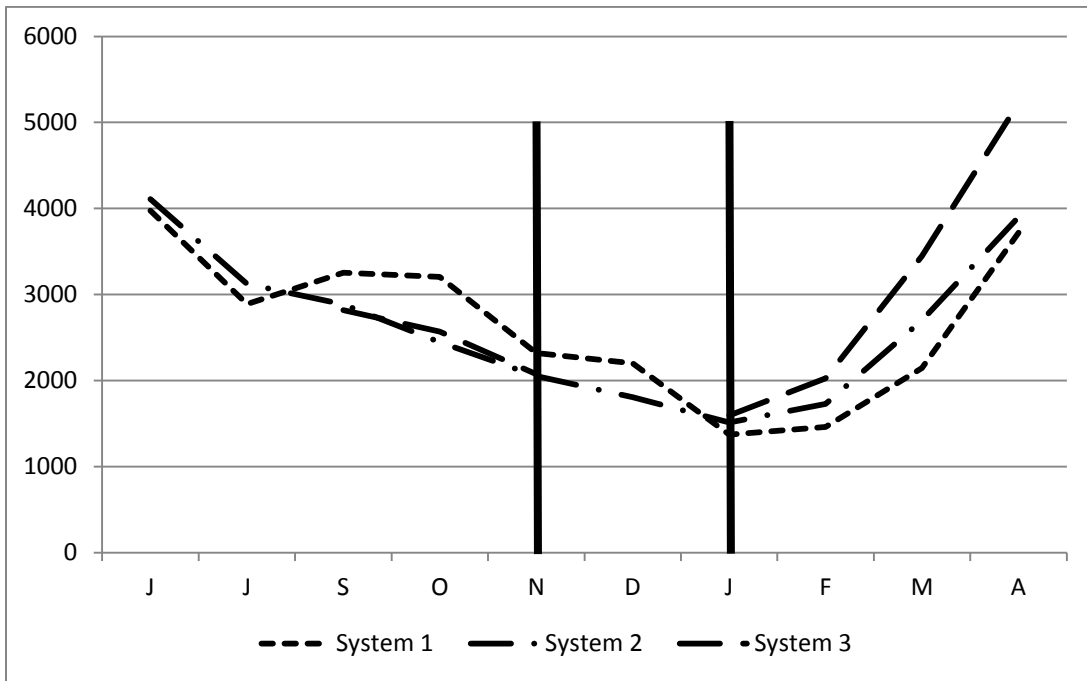


Figure 1. Forage mass (DM, lb/ac) available (cut at 1 in above the ground).

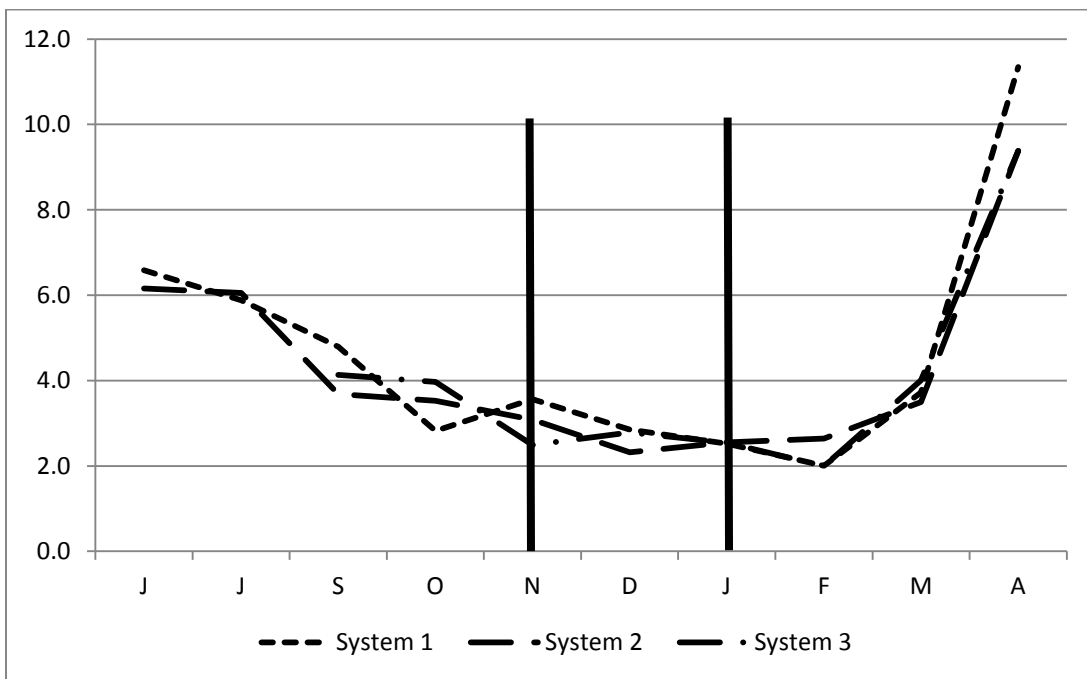


Figure 2. Height (in) of forage available.

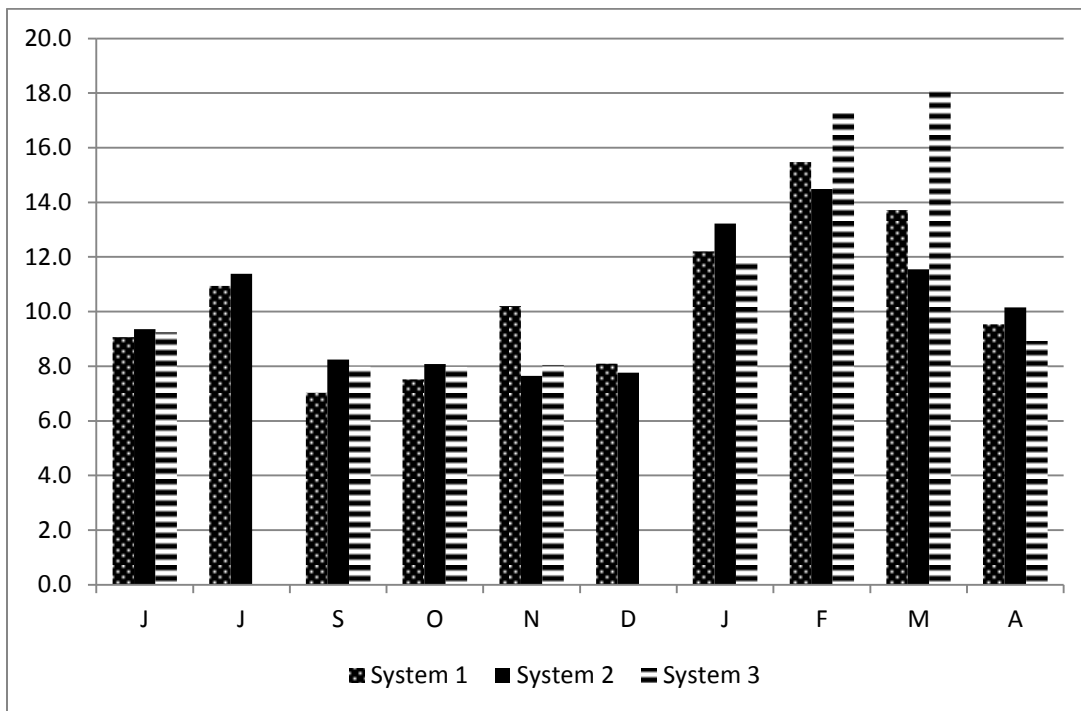


Figure 3. Percent CP of forage available.

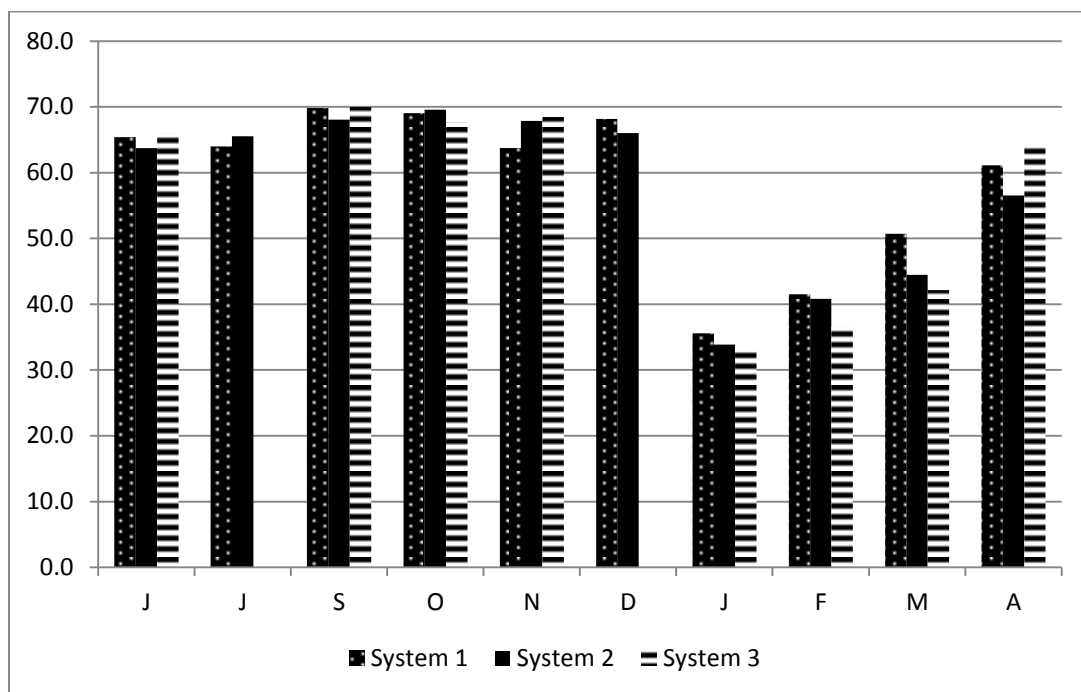


Figure 4. Percent NDF of forage available.

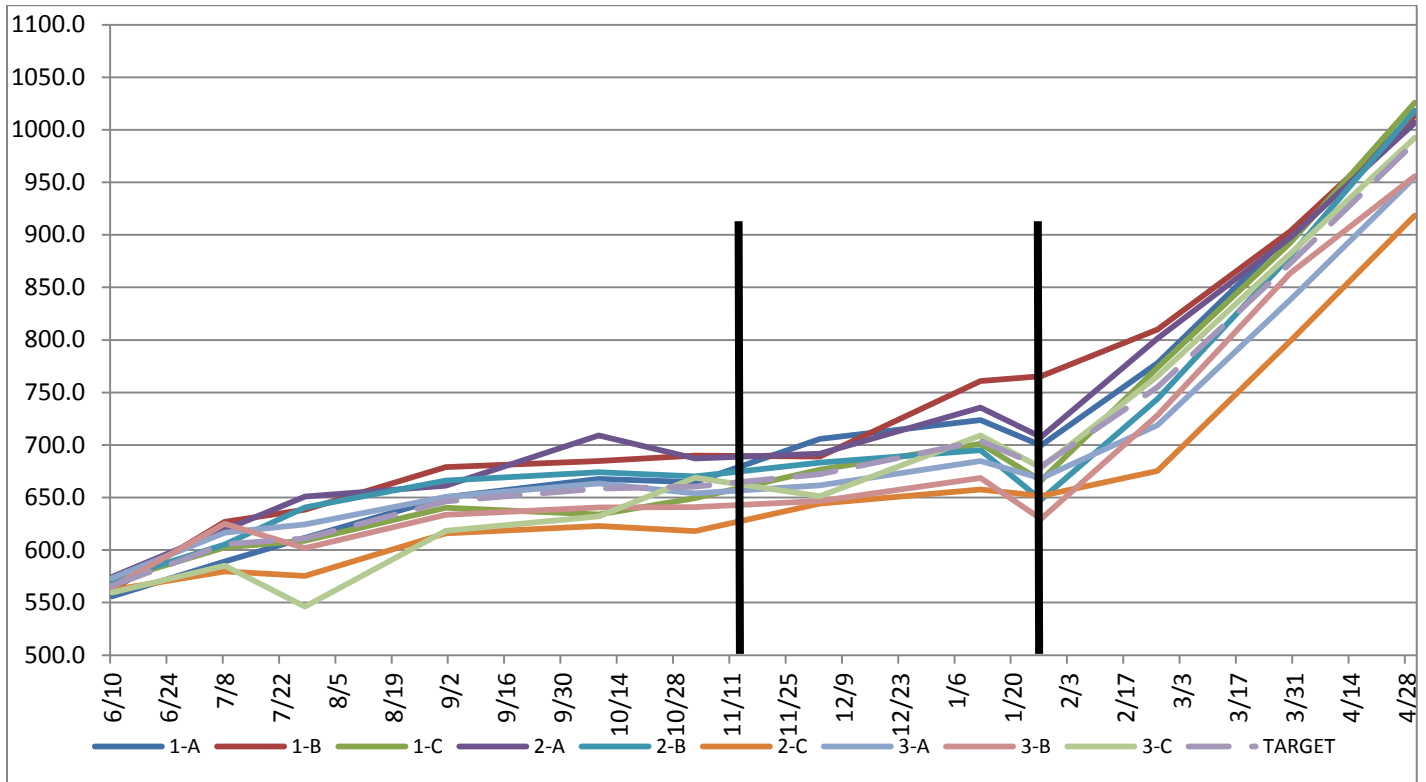


Figure 5. Body weight (lb) for all 9 groups (3 groups/system)

	INITIAL BW, lb	FINAL BW, lb	ADG, lb WINTER	ADG, lb TOTAL
System 1	562.9	1015.3	3.31	1.40
System 2	569.3	981.1	3.39	1.27
System 3	565.9	967.8	3.36	1.23

SUMMER ADG, lb

SYSTEM 1			SYSTEM 2			SYSTEM 3		
GRAZING	HAY	AVERAGE	GRAZING	HAY	AVERAGE	GRAZING	HAY	AVERAGE
0.73	0.36	0.64	0.59	-0.07	0.43	0.46	0.10	0.38

Carcass information

System	Maturity		Lean	Marbling	Grade	BW, lb	Carcass Weight, lb	Fat thick, in	PYG	Ribeye Area, in ²	KPH	% dress	Shear force		% decrease
	Skeletal												7 d, kg	14 d, kg	
1	A50	A60	A60	TR30	St+	1058.3	577.5	0.29	2.60	10.05	1.50	54.5	6.6	6.0	9.3
2	A50	A60	A60	TR50	St0	1032.5	568.2	0.24	2.42	9.43	1.33	55.0	6.3	5.3	16.5
3	A50	A60	A60	TR40	St+	1023.3	577.3	0.14	2.25	10.28	1.00	56.4	7.2	6.4	10.3
					ALL	1038.1	574.3	0.22	2.42	9.92	1.28	55.3	6.7	5.9	
					MAX	1130.0	642.0	0.48	3.00	12.00	2.00	58.4	10.7	9.1	
					MIN	890.0	466.0	0.02	2.00	7.50	0.50	50.9	4.2	3.9	

Figures relevant to Objective 2

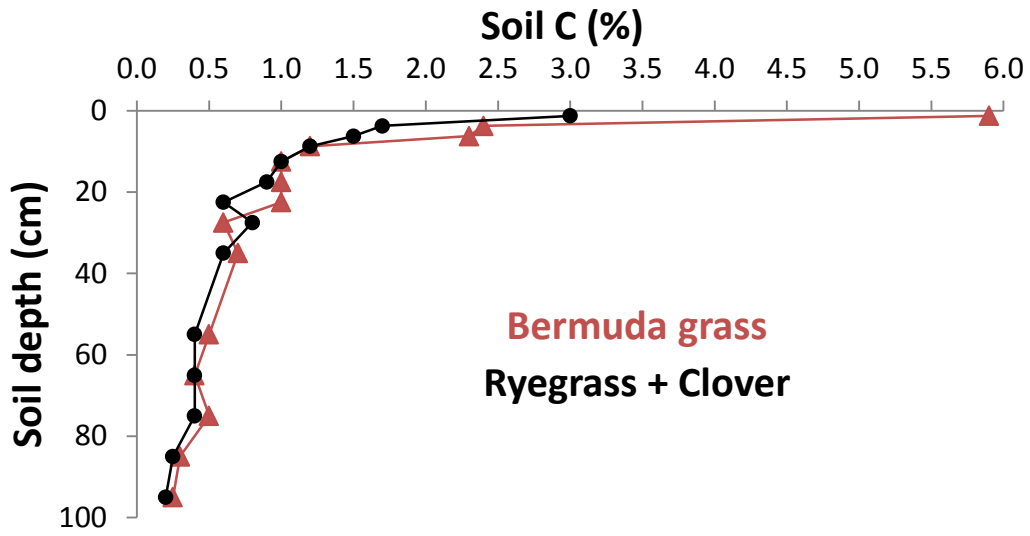


Figure 1. Distribution of soil profile carbon on bermudagrass and ryegrass + clovers pastures.

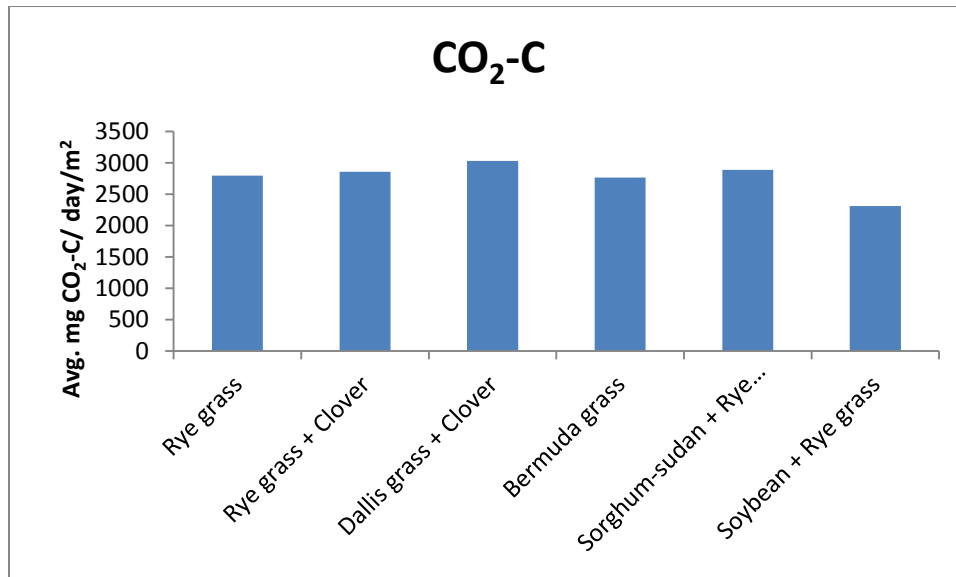


Figure 2. Average rate of CO₂-C emissions from different forage crop systems (18 month monitoring data).

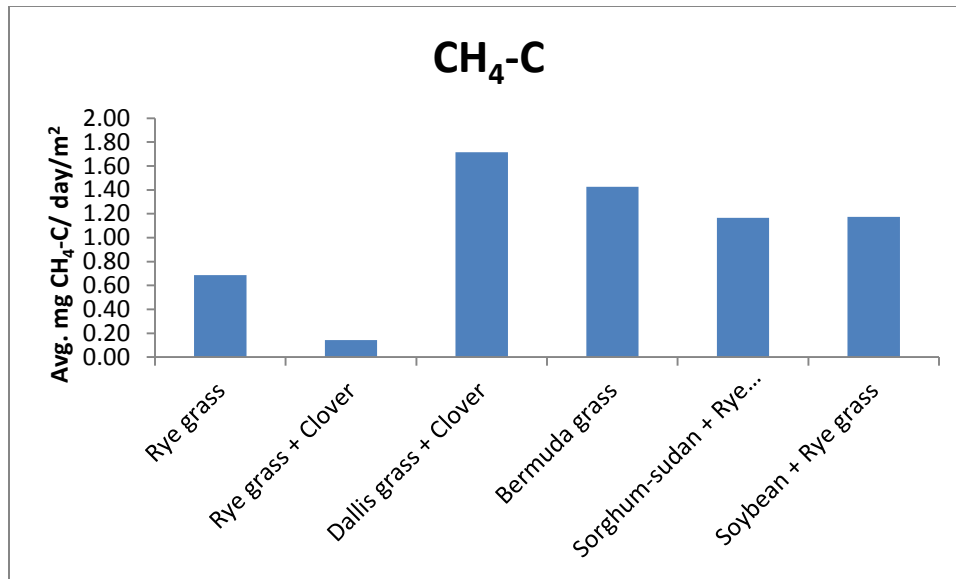


Figure 3. Average rate of CH₄-C emissions from different forage crop systems (18 month monitoring data).

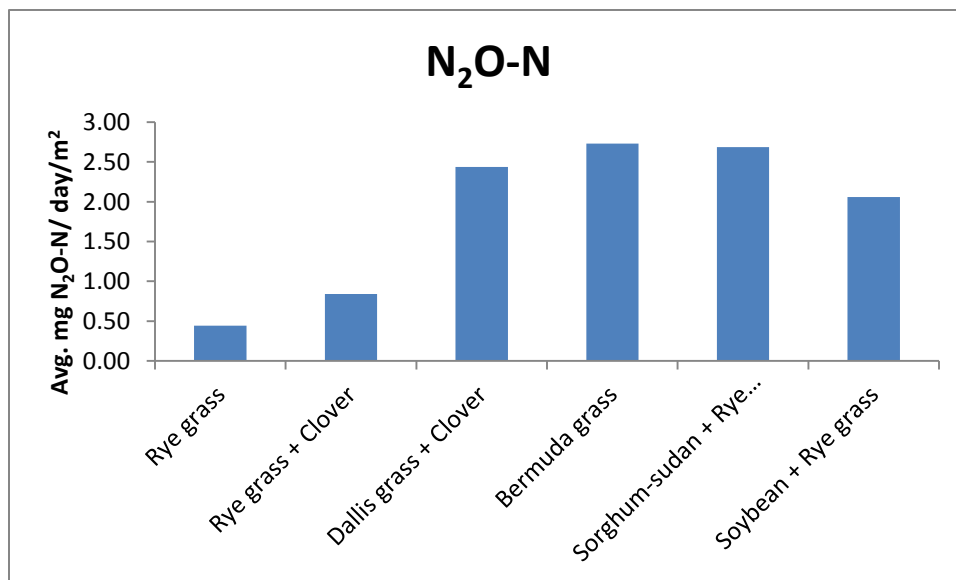


Figure 4. Average rate of N₂O-N emissions from different forage crop systems (18 month monitoring data).

Pictures



Steers purchased for second year of the grant (Objective 1)



Calibrating no-till planter for dallisgrass + clover plantings (Objective 1)



Berseem and red clover in May 2010 (Objective 1)



No-till planting sorghum-sudangrass (Objective 1)



Steers rotationally stocked on winter pastures (Objective 1)



Ribeye from one of the steers harvested in April 2010 (first cycle)



**Workshop
10/22/2010**

Forage fed beef Workshop at MSU-Prairie Unit; Dr. Scaglia's presentation (Objective 4)



**Workshop
10/22/2010**

Forage fed beef Workshop at MSU-Prairie Unit; Dr. William's presentation (Objective 4)



Steers grazing bermudagrass (Objective 4)



Steers grazing bermudagrass (Objective 4)



Dr. Scaglia addressing attendees at the Pasture Walk (Objective 4)



**Dr. Scaglia addressing attendees at the Pasture Walk (Objective 4)
Light blue chambers use to sample gases for Objective 2 are in the background**