

Figure and Photos for SARE project FNE11-718, Planning tool for succession planting of crops, particularly lettuce, broccoli, and corn. 2011 Growing season.

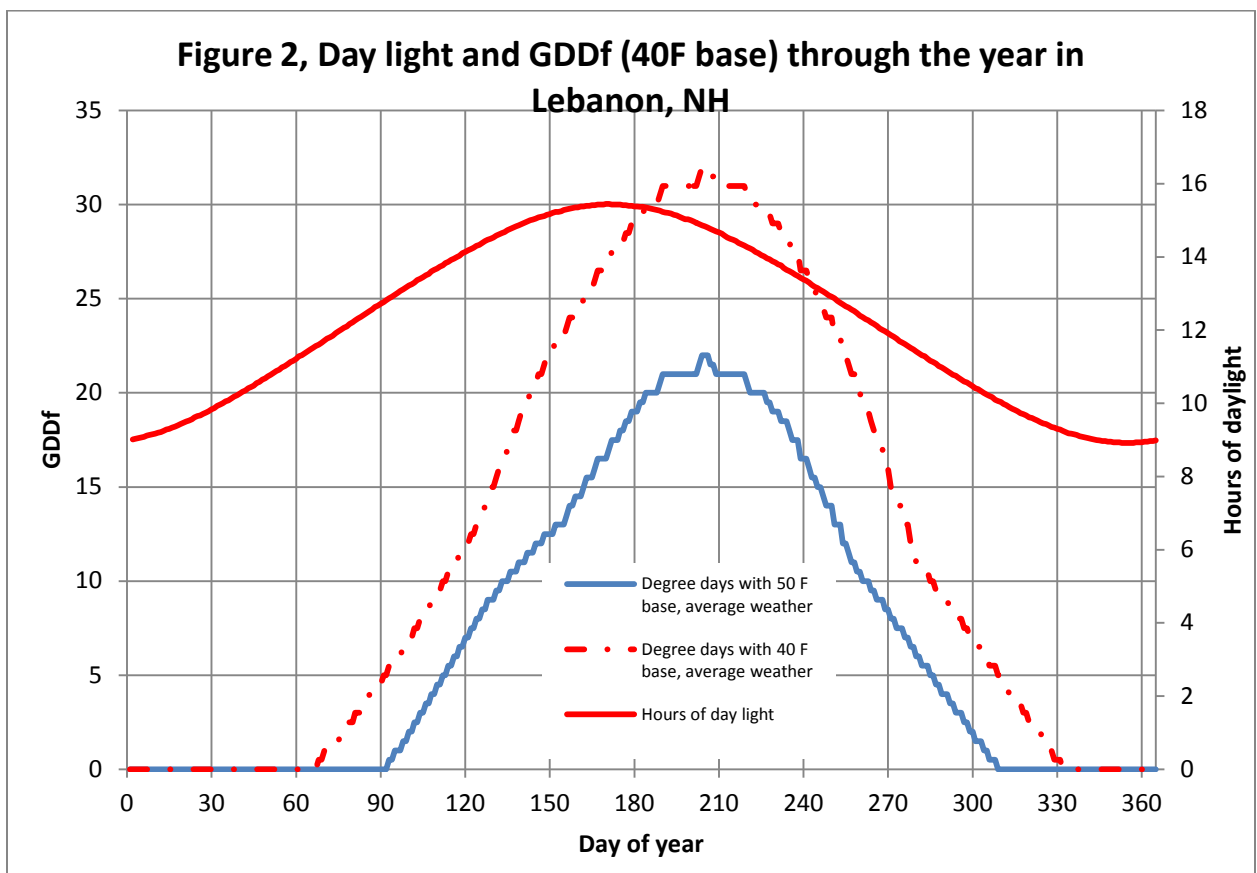
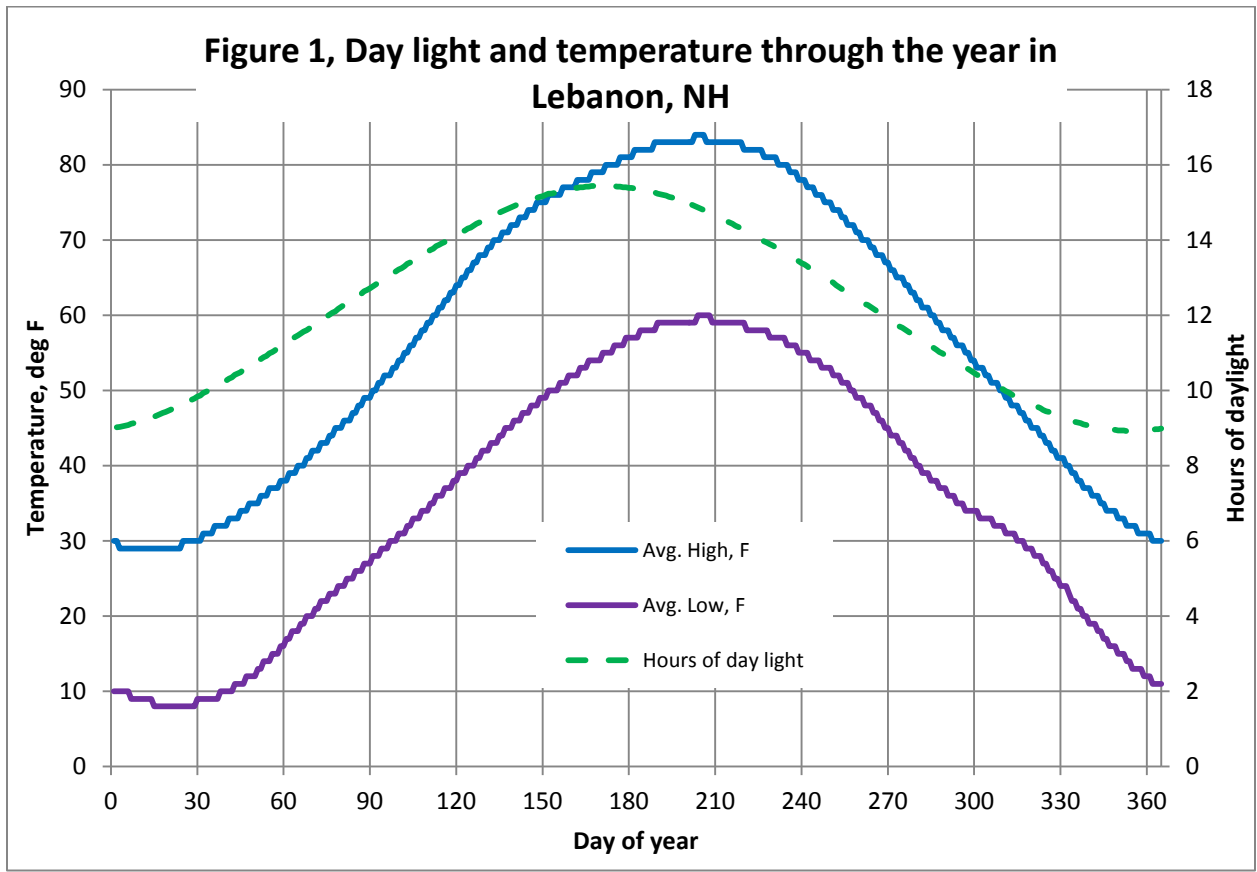


Figure 3, Cummulative growing degree days, 40 F base for average year in Lebanon, NH

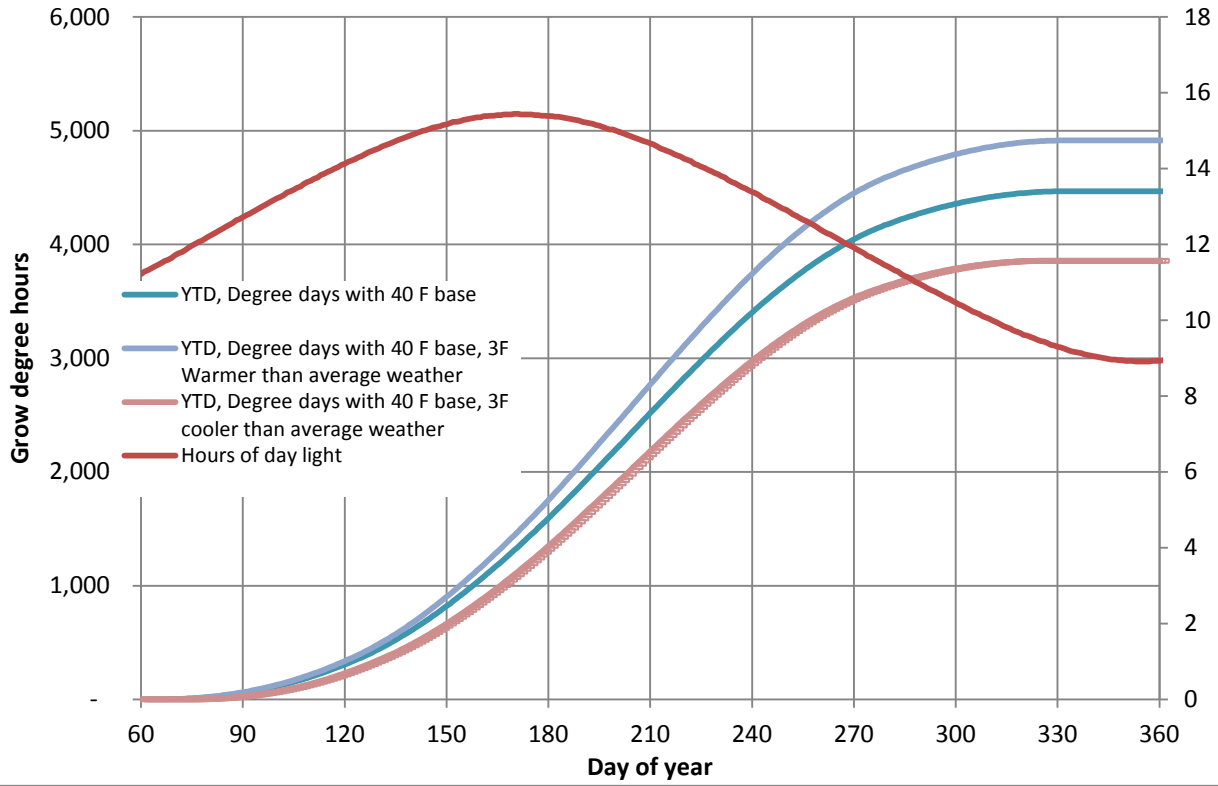


Figure 4, Cummulative growing degree days for average year in Lebanon, NH

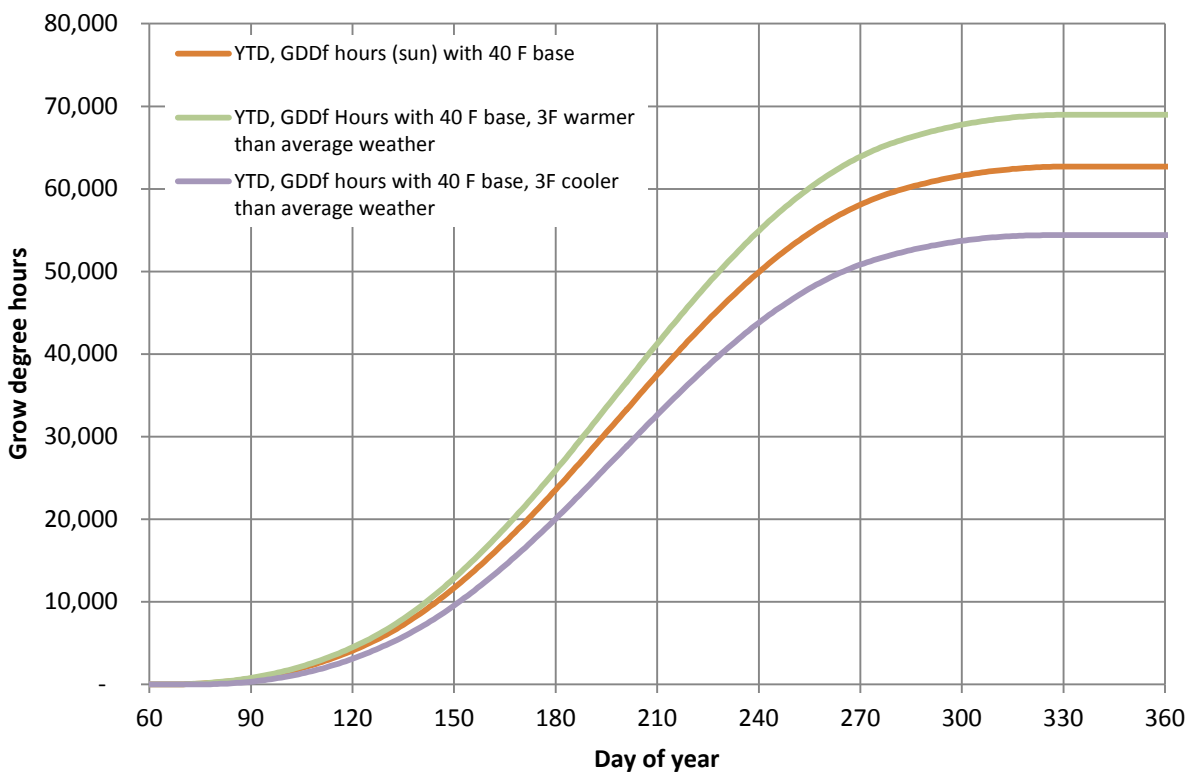


Figure 5, GDDf*HD vs day of year for Average, 2010 (approx from Internet), and 2011 ACTUAL from data measured at Blue Ox Farm (with 5-9-2011 start date)

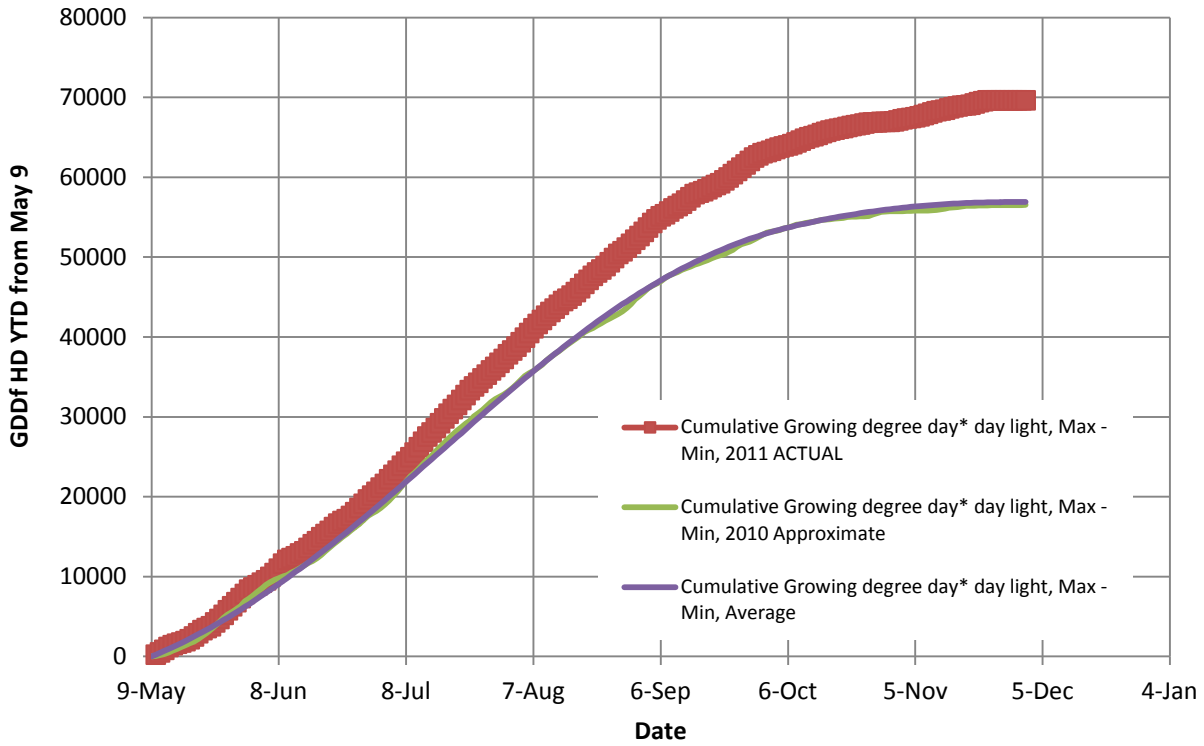


Figure 6, GDDf*HD vs day of year for 2010 (approx from Internet), and 2011 ACTUAL from data measured at Blue Ox Farm

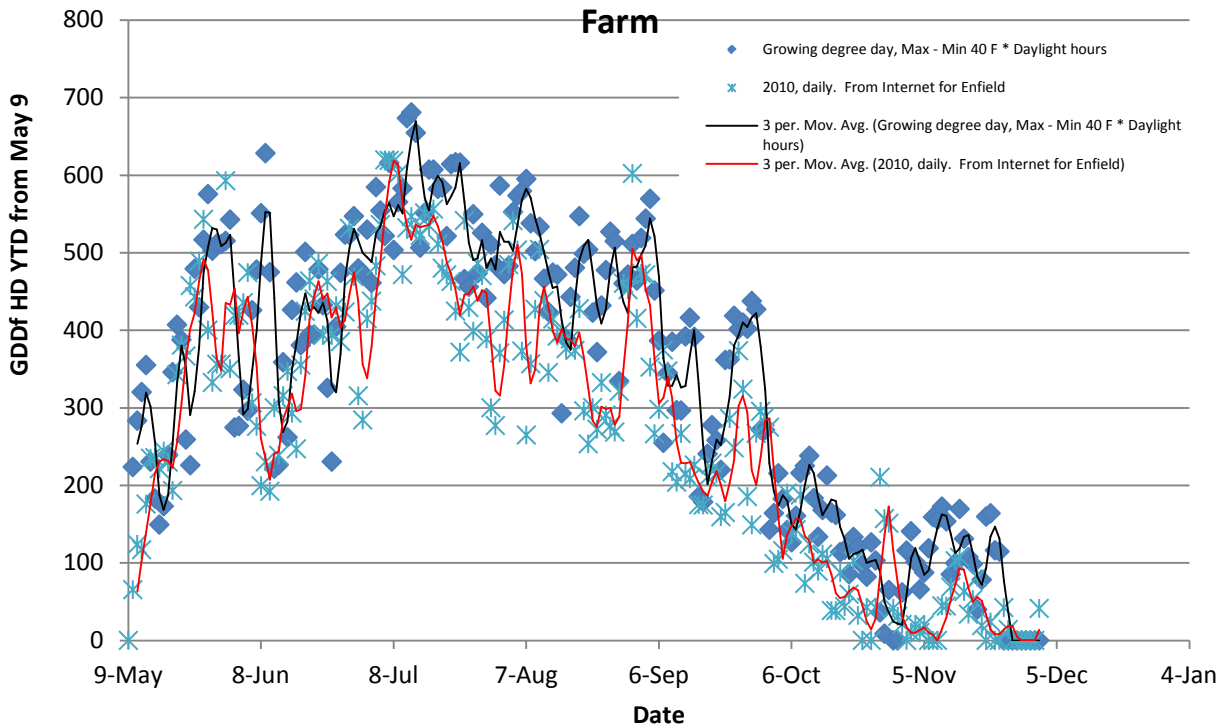


Figure 7, Harvest Date Vs Seeding Date for Greenstar Lettuce, 2011 data

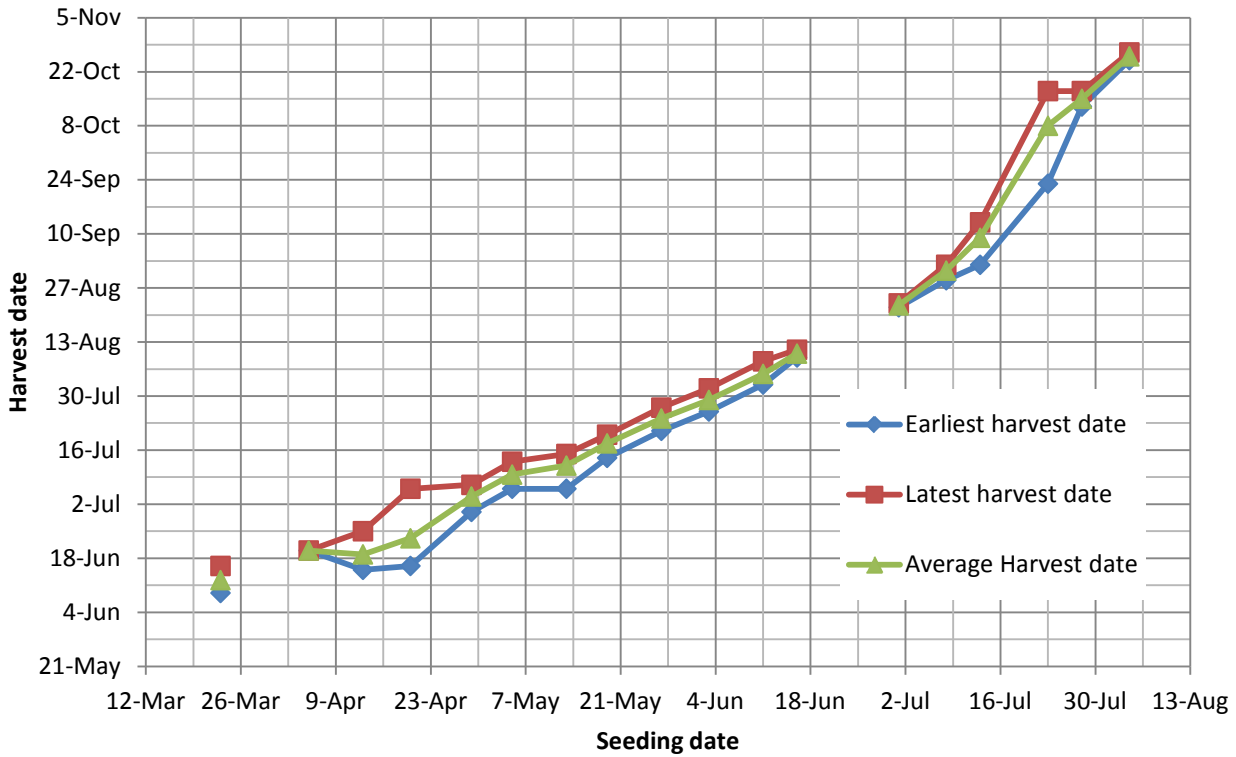


Figure 8, Harvest Date Vs Seeding Date for Vulcan Lettuce, 2011 data

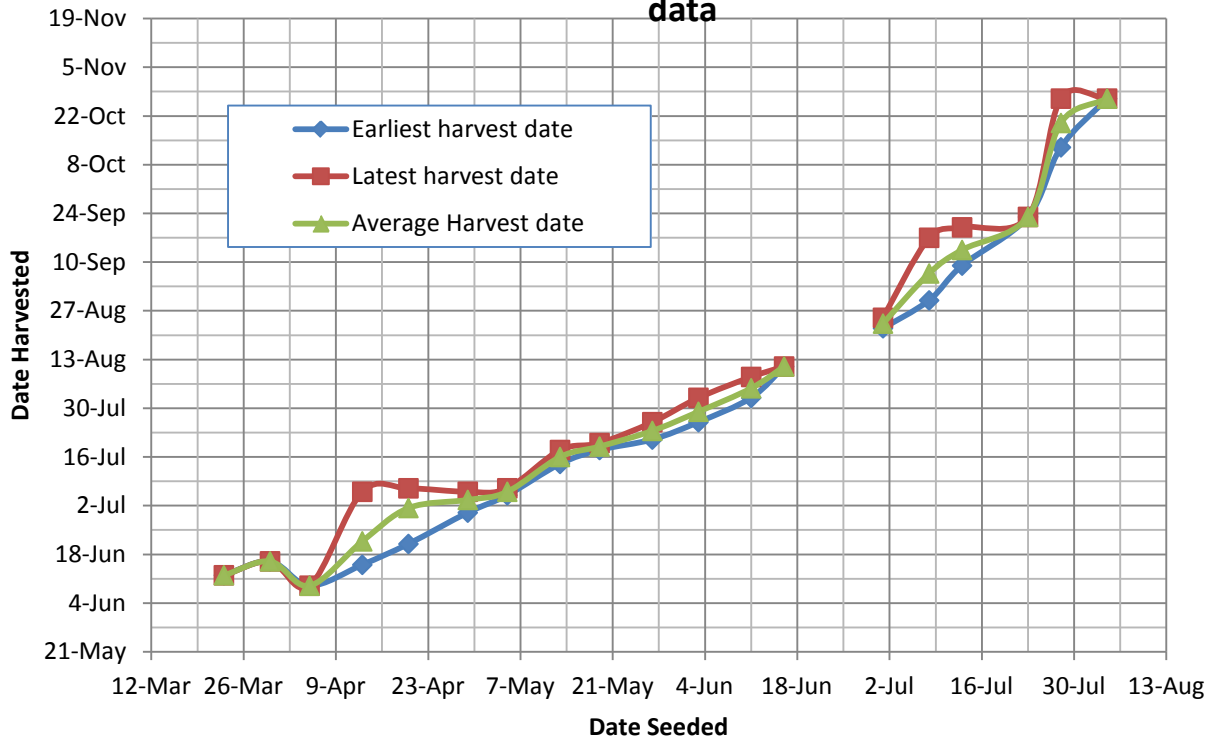


Figure 9, Comparison of forecast harvest vs seeding date for average year for Lettuce assuming 28,000 GDDfHD to maturity, plus 40F base temperature to 2011 data for Vulcan and Greenstar

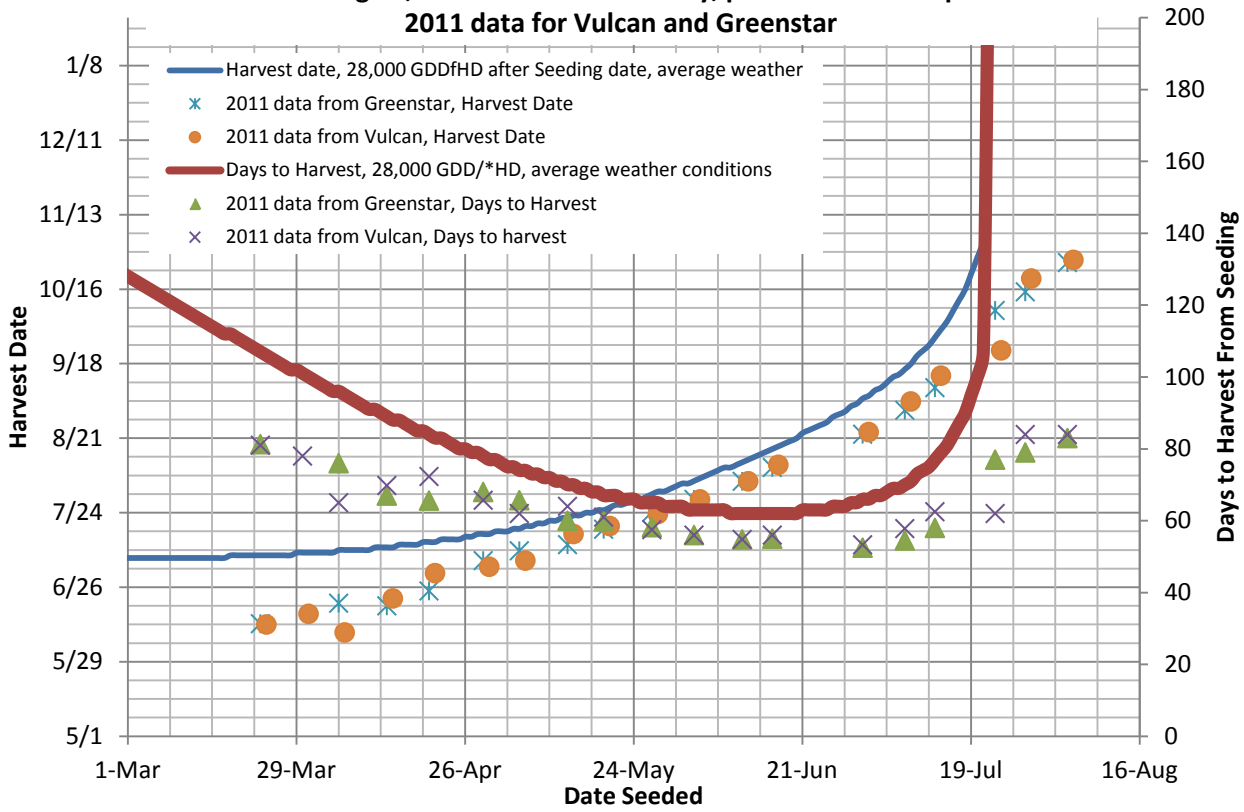


Figure 10, Harvest date vs Seeding Date for Everest Broccoli, 2011 season

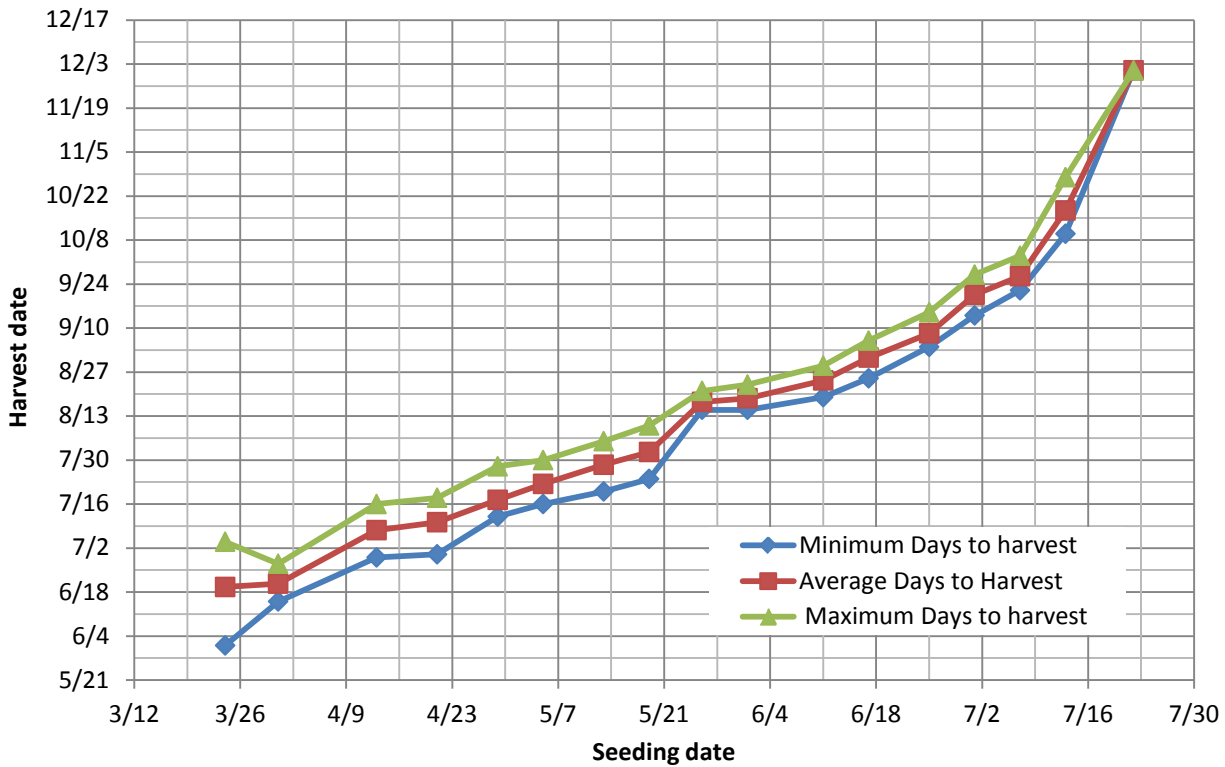


Figure 11, Comparison of forecast harvest vs seeding date for average year for Everest Broccoli assuming 34,000 GDDfHD to maturity, and 40F base temperature to 2011 data for Everest

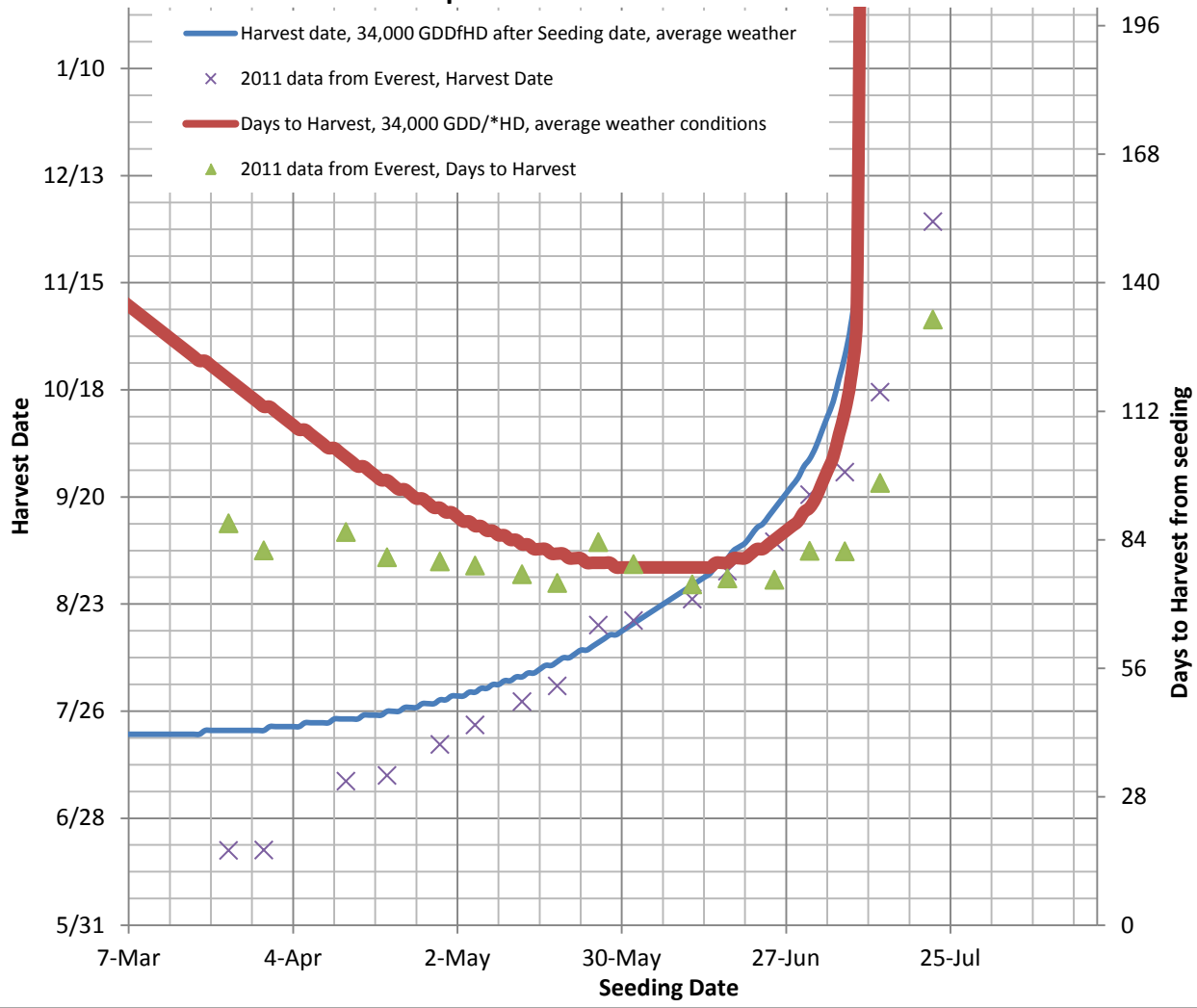


Figure 12, Corn, Mystique Variety, Date harvested vs date seeded

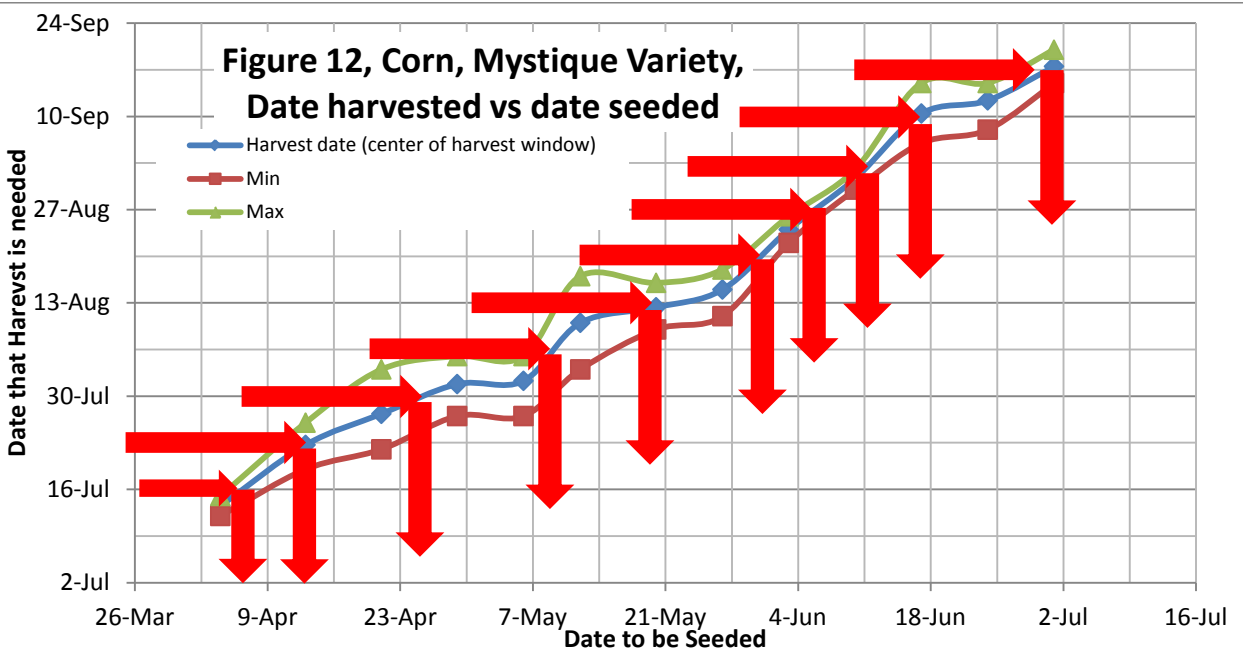


Figure 13, Comparison of forecast harvest vs seeding date for average year for Corn assuming 27,000 GDDfHD to maturity, plus 50F base temperature to 2011 data for Mystique

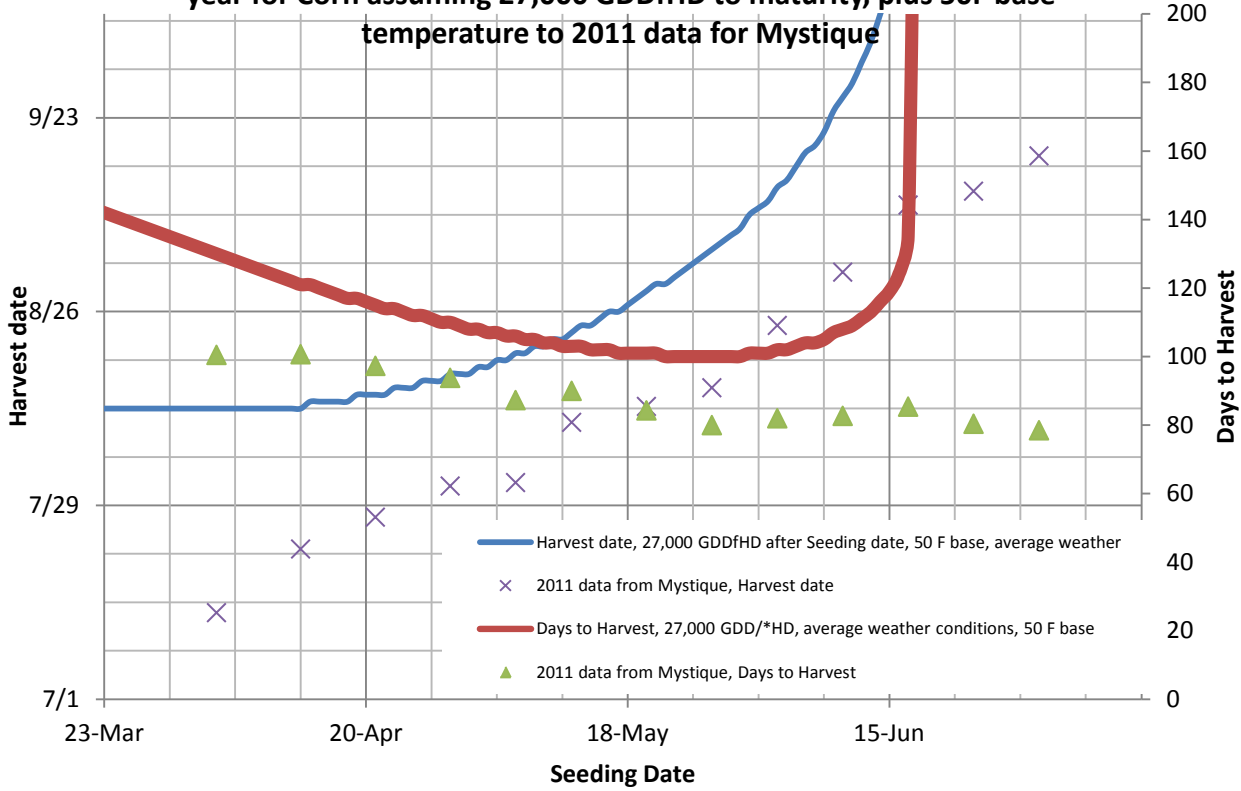
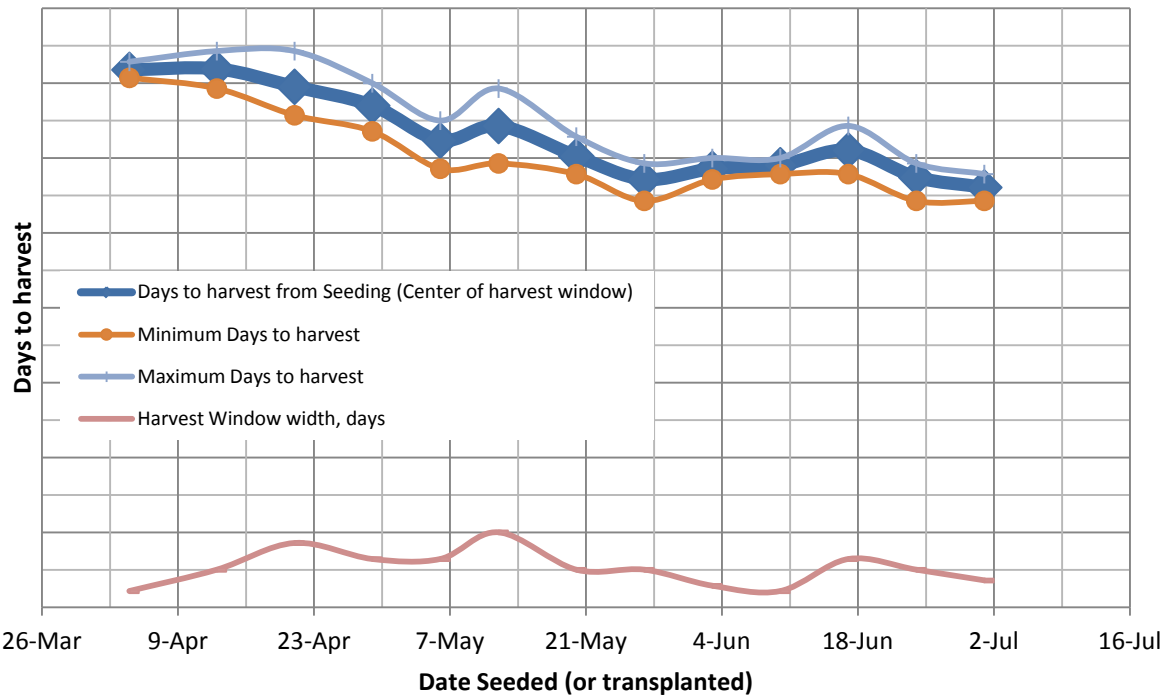


Figure 14, Corn (Mystique) Days to Harvest from Seeding and transplanting



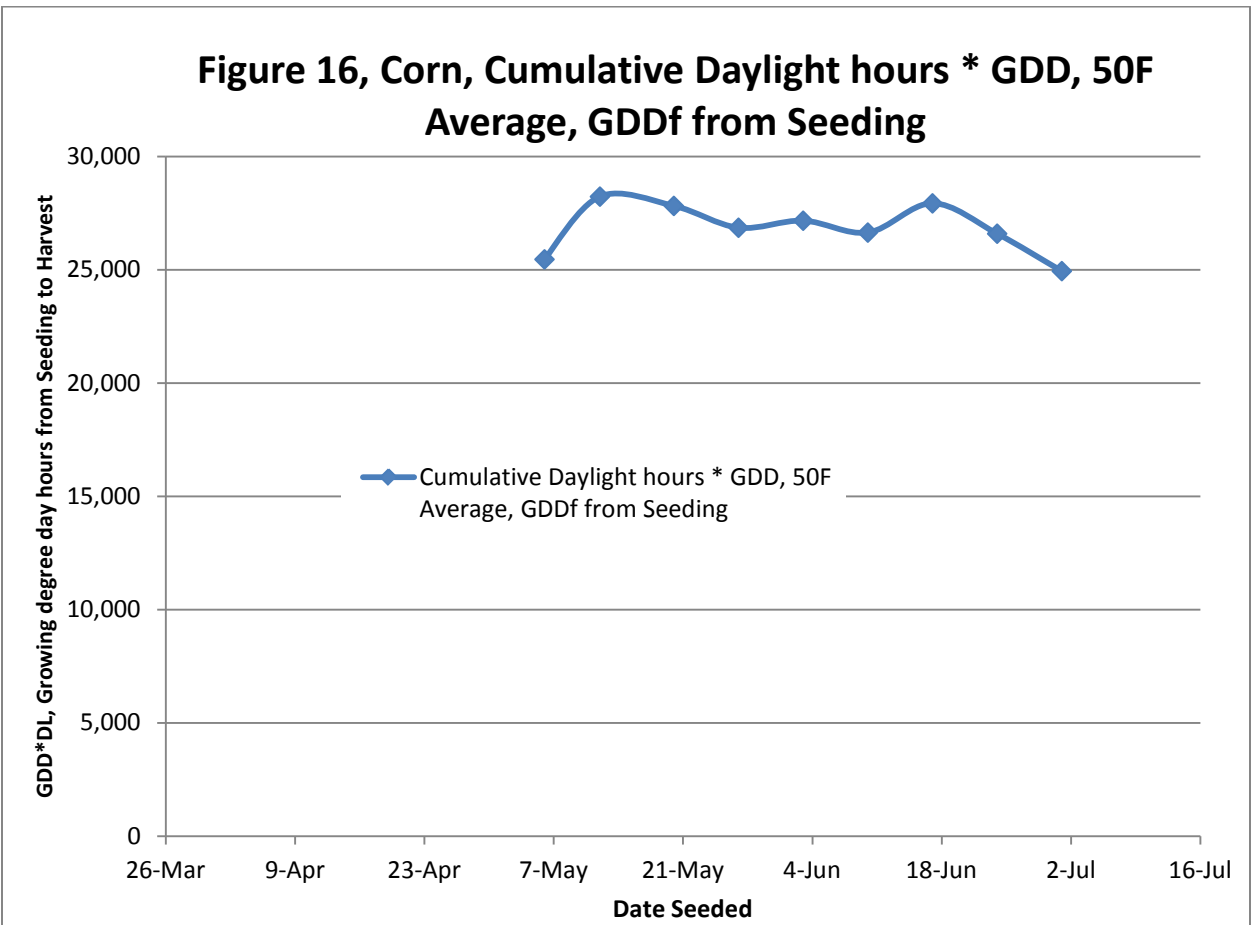
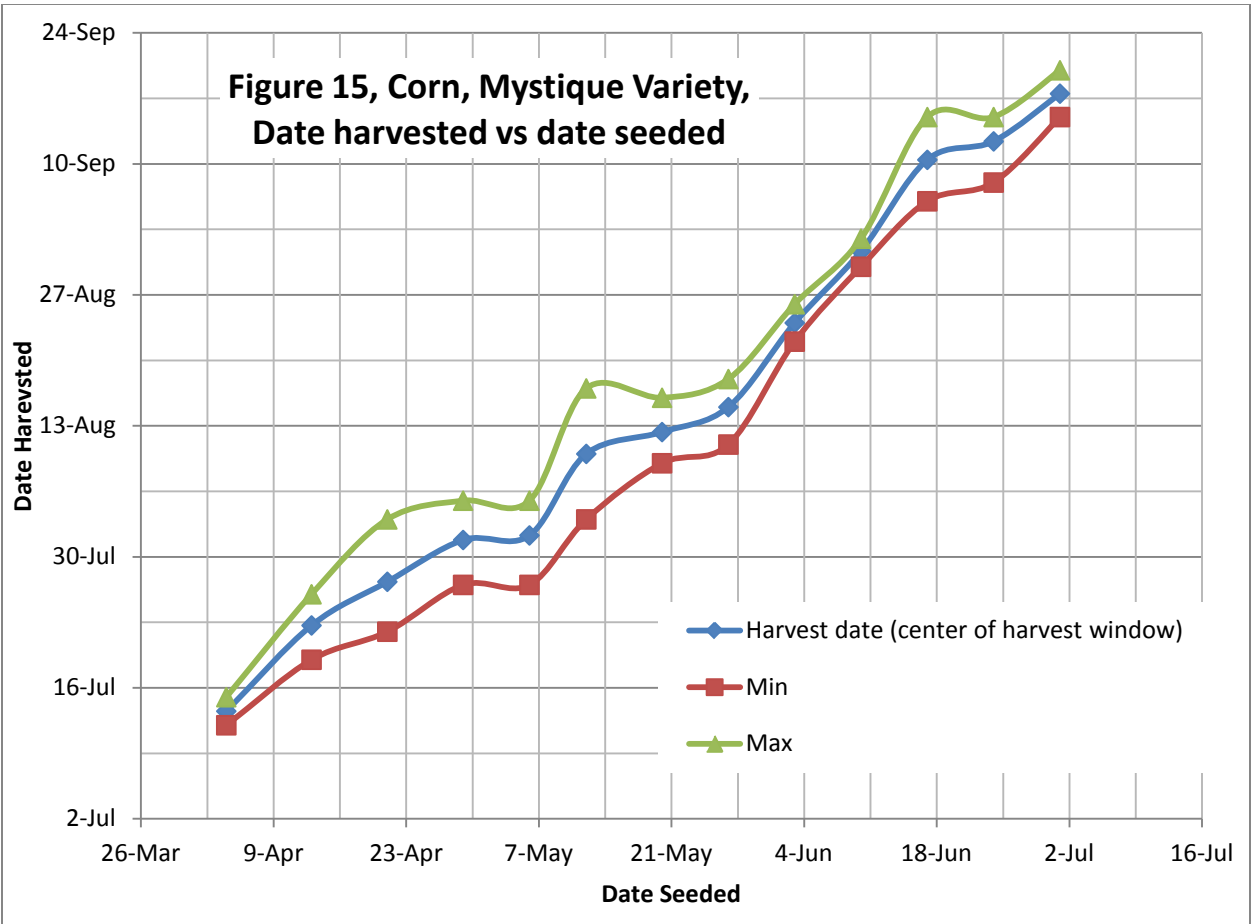


Figure 17, Time to harvest for Everest Broccoli. Time from date seeded to Average Harvest date, 2011 Season

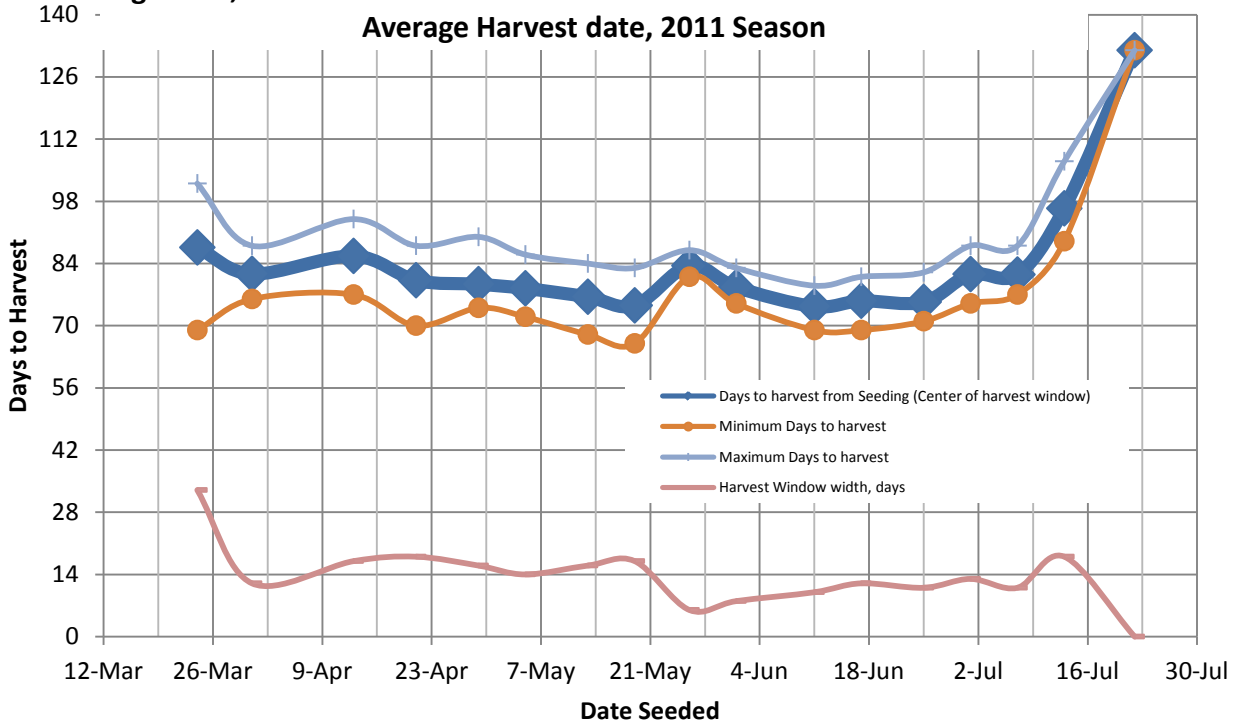


Figure 18, Harvest date vs Seeding Date for Everest Broccoli, 2011 season

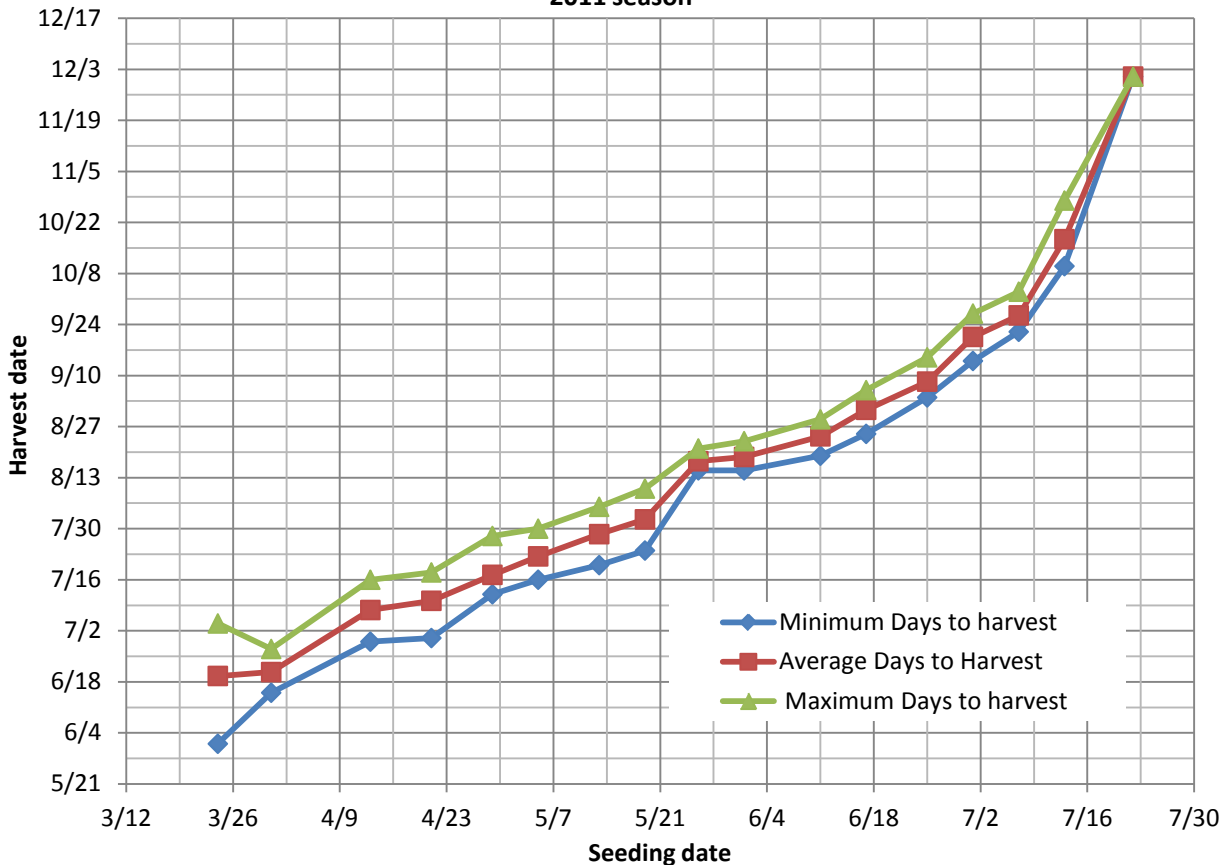


Figure 19, Everest, Broccoli, from Seed to harvest

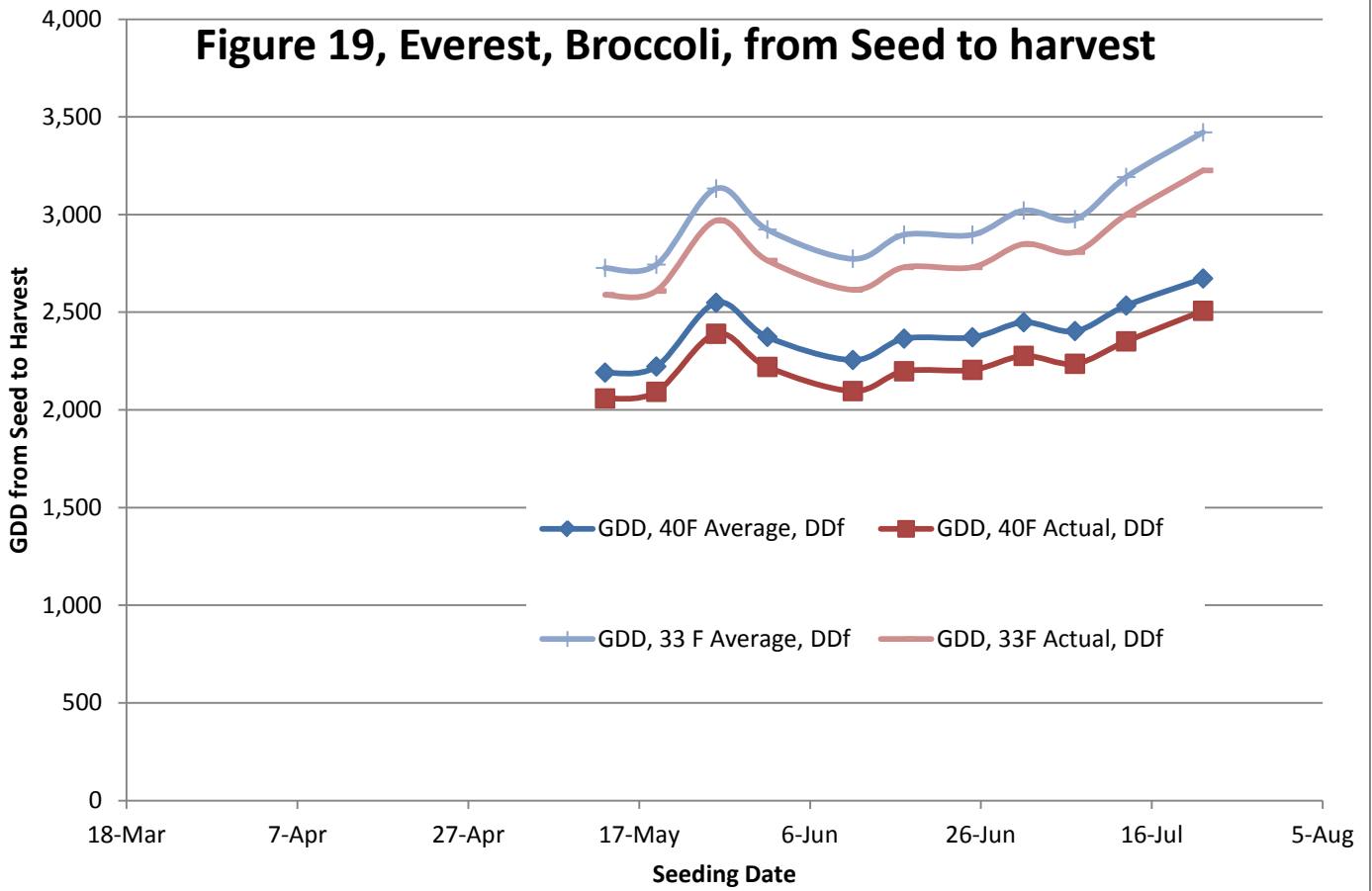


Figure 20, Cumulative Daylight hours * GDD, 40F Average, DDf from Seeding Everest Broccoli

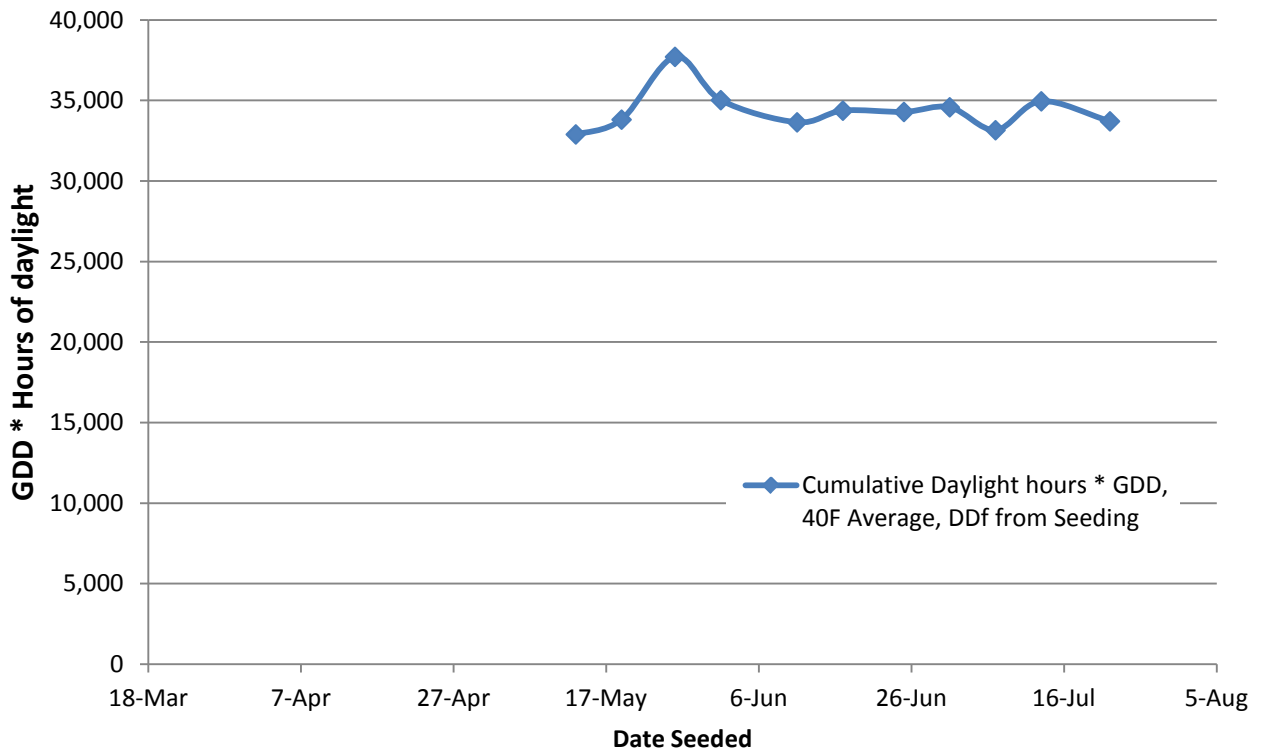


Figure 21, Greenstar Lettuce. Time from date seeded to Average Harvest date

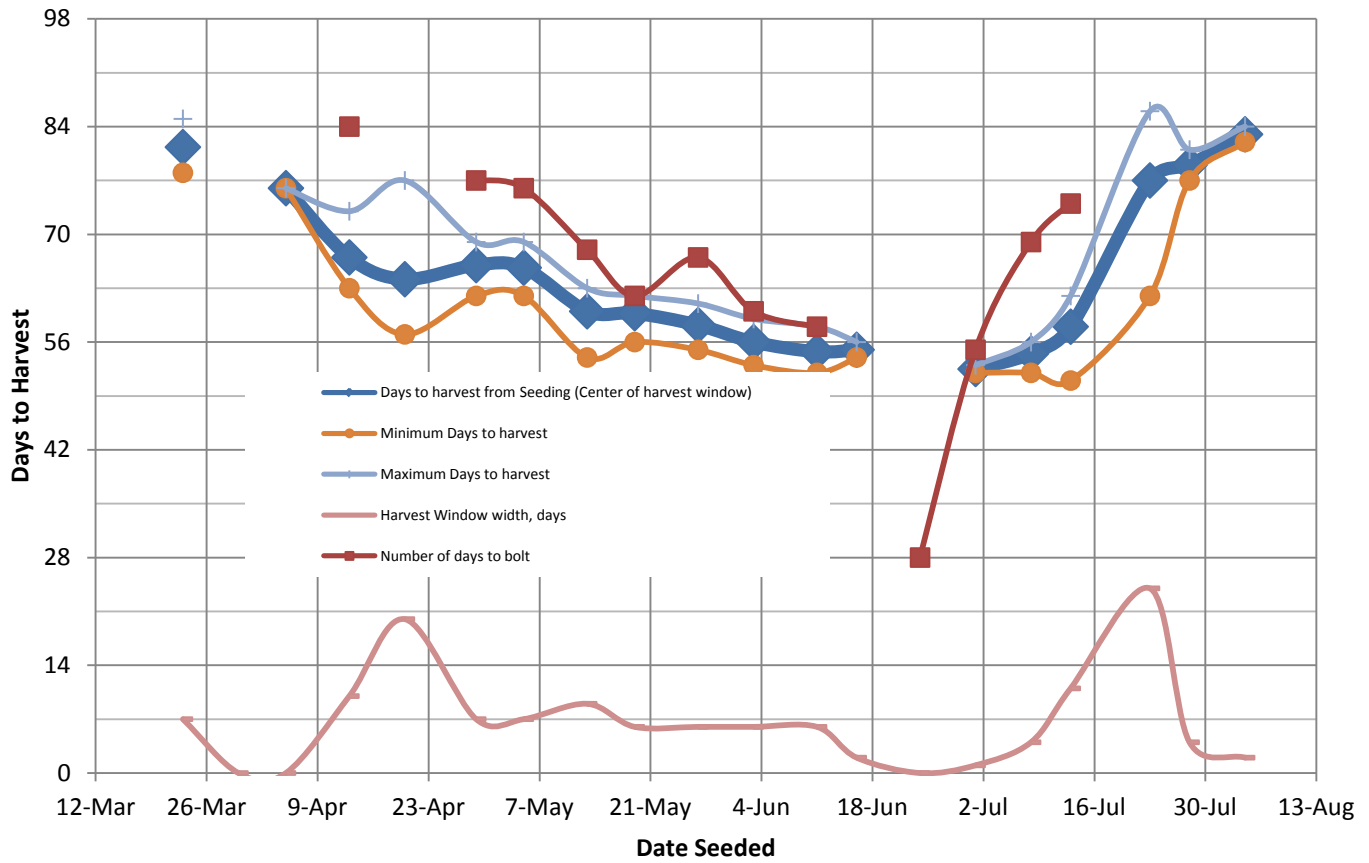


Figure 22, Harvest Date Vs Seeding Date for Greenstar Lettuce, 2011 data

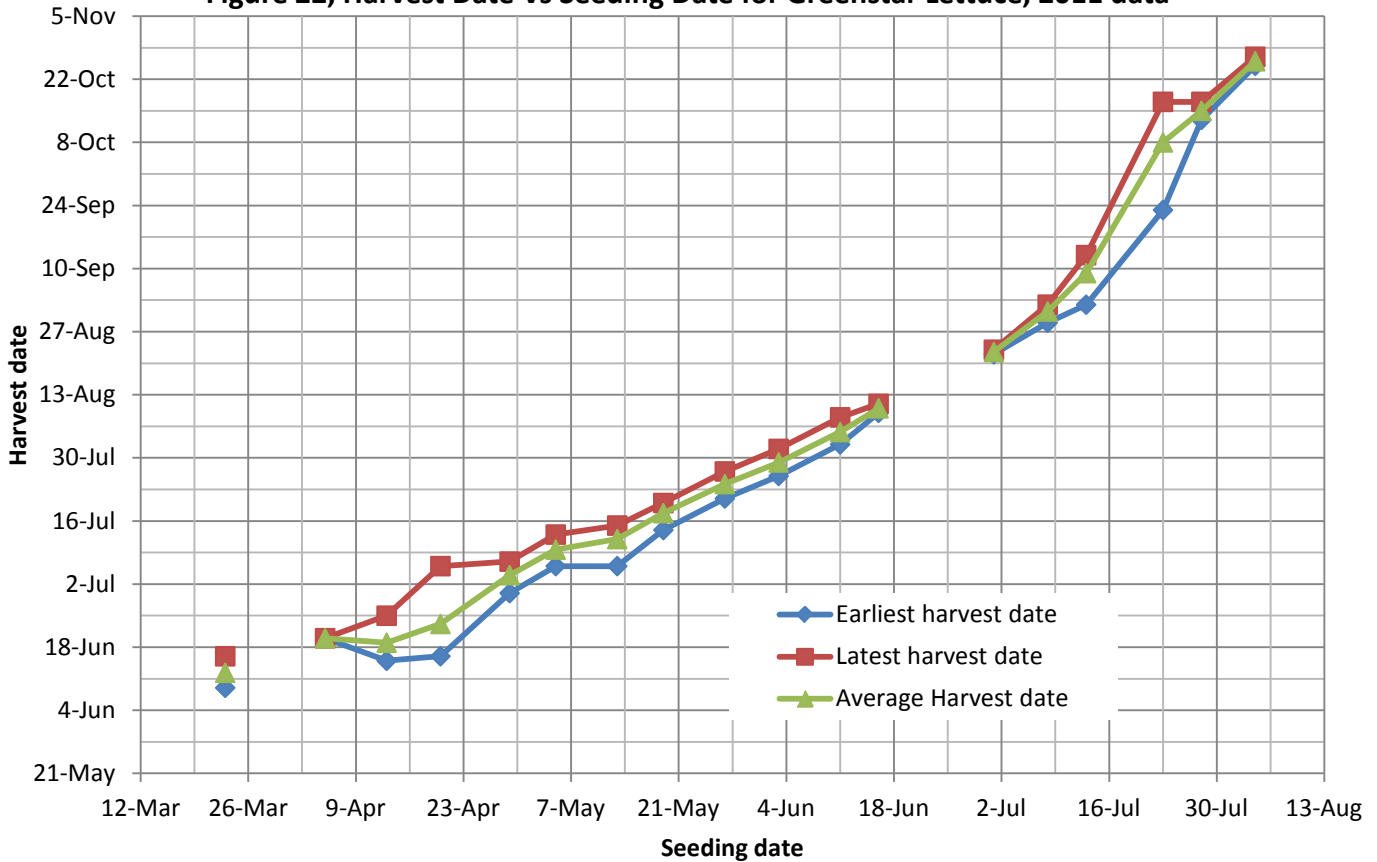


Figure 23, Greenstar Lettuce, Cumulative Daylight hours * GDD, 40F Average, GDDf from Seeding

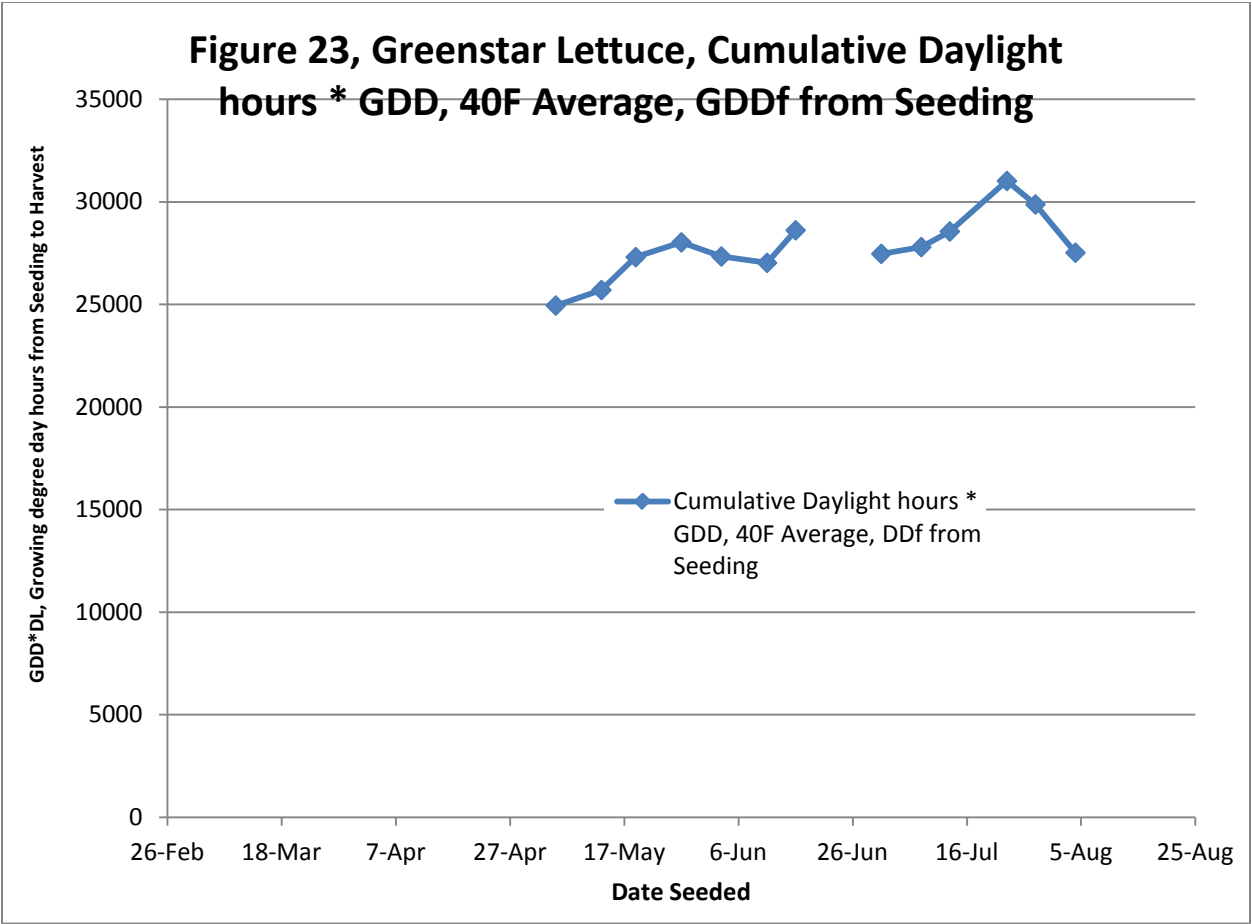
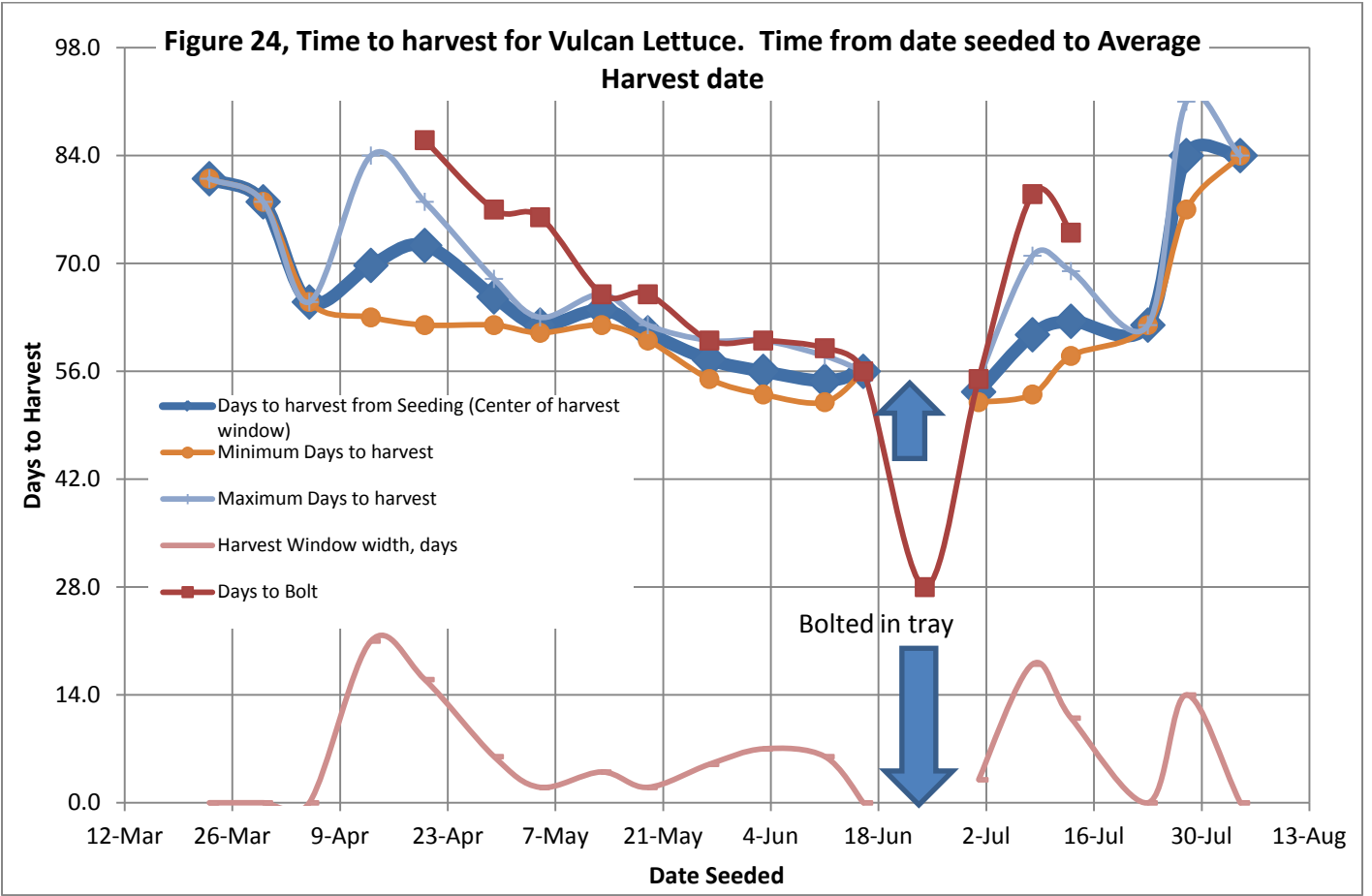
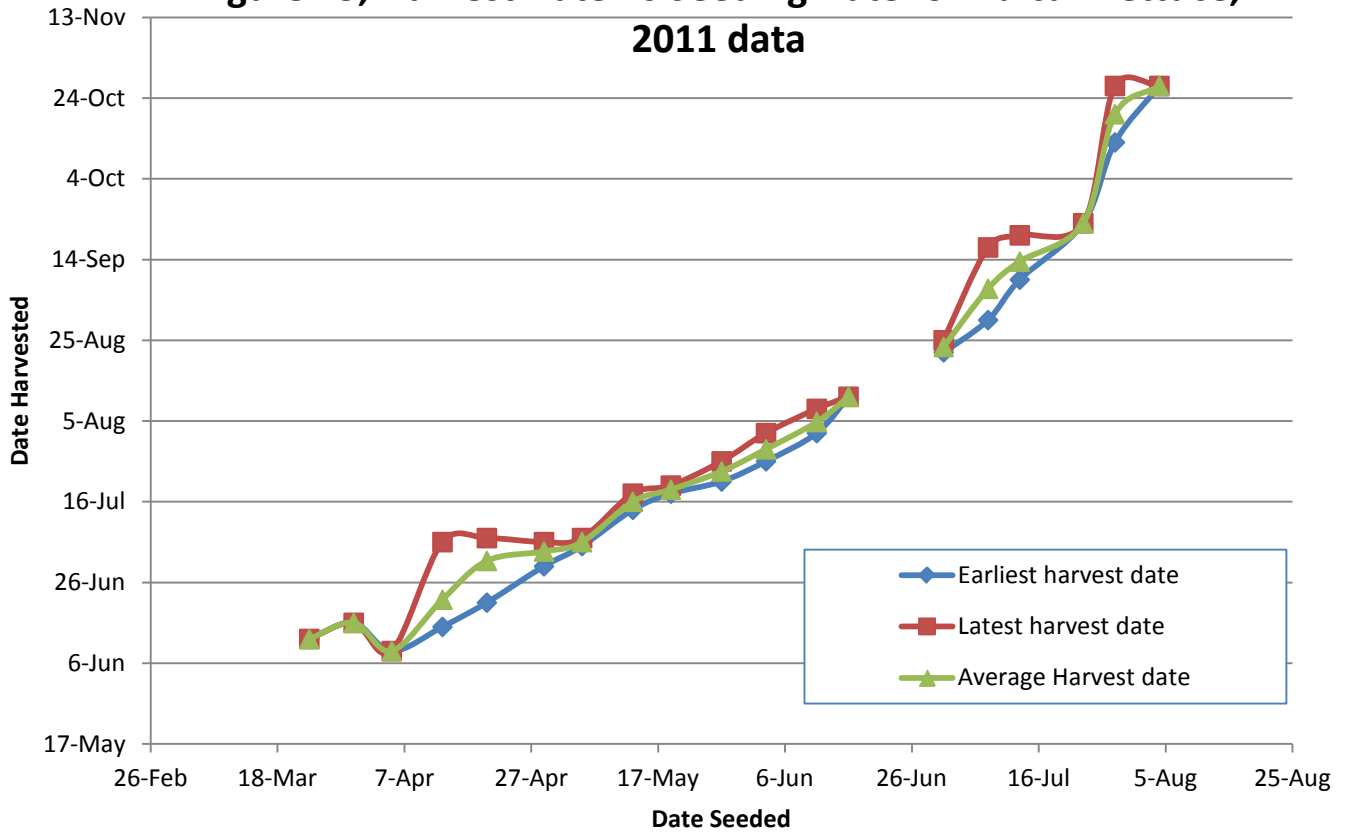


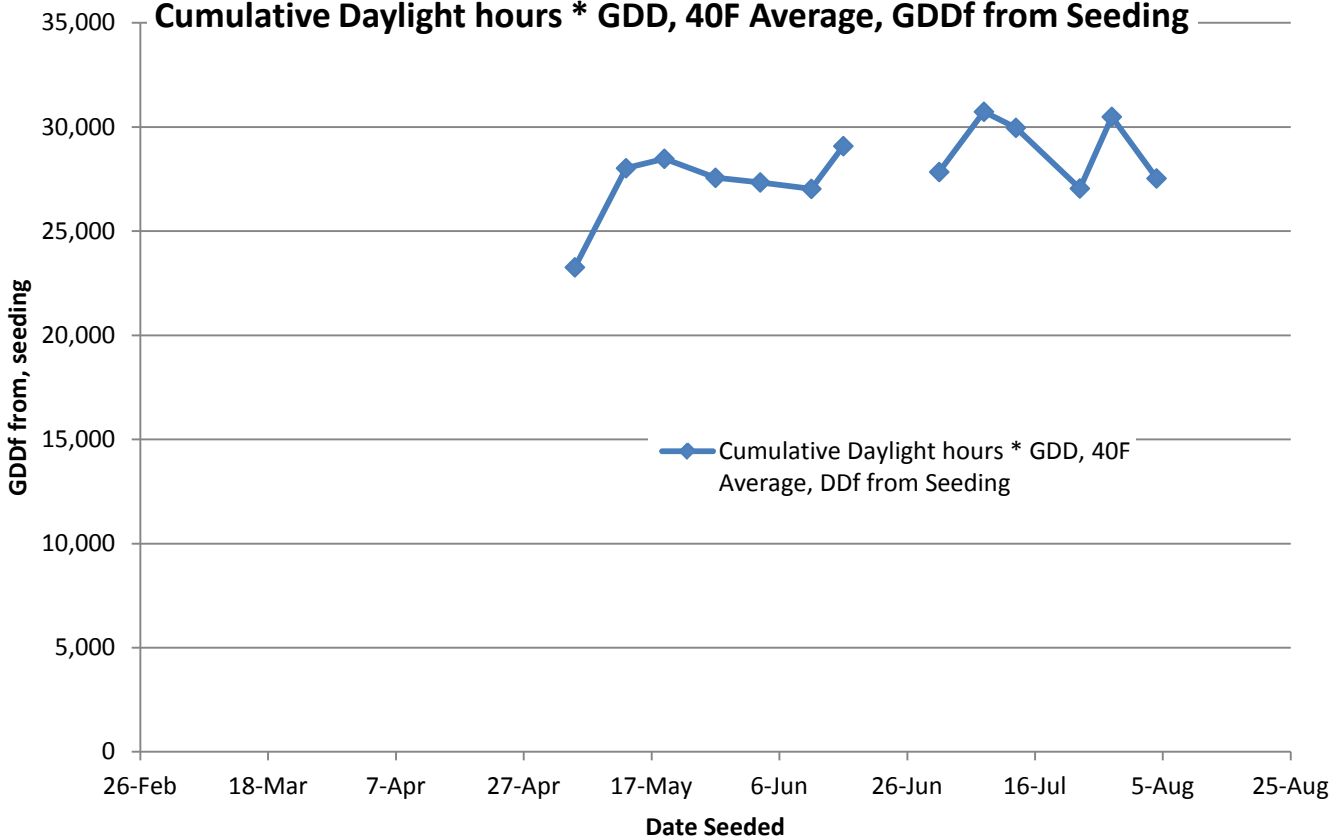
Figure 24, Time to harvest for Vulcan Lettuce. Time from date seeded to Average Harvest date

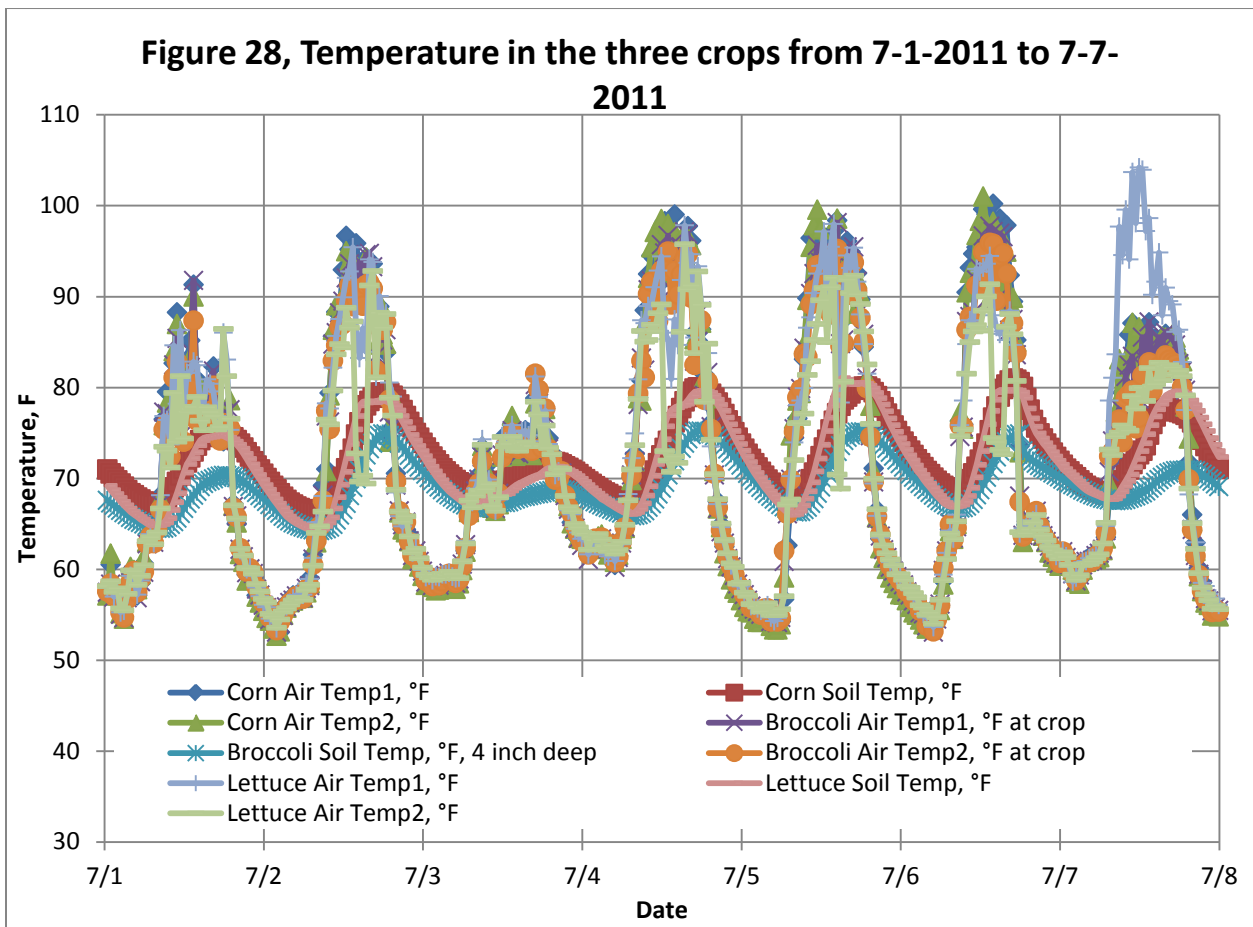
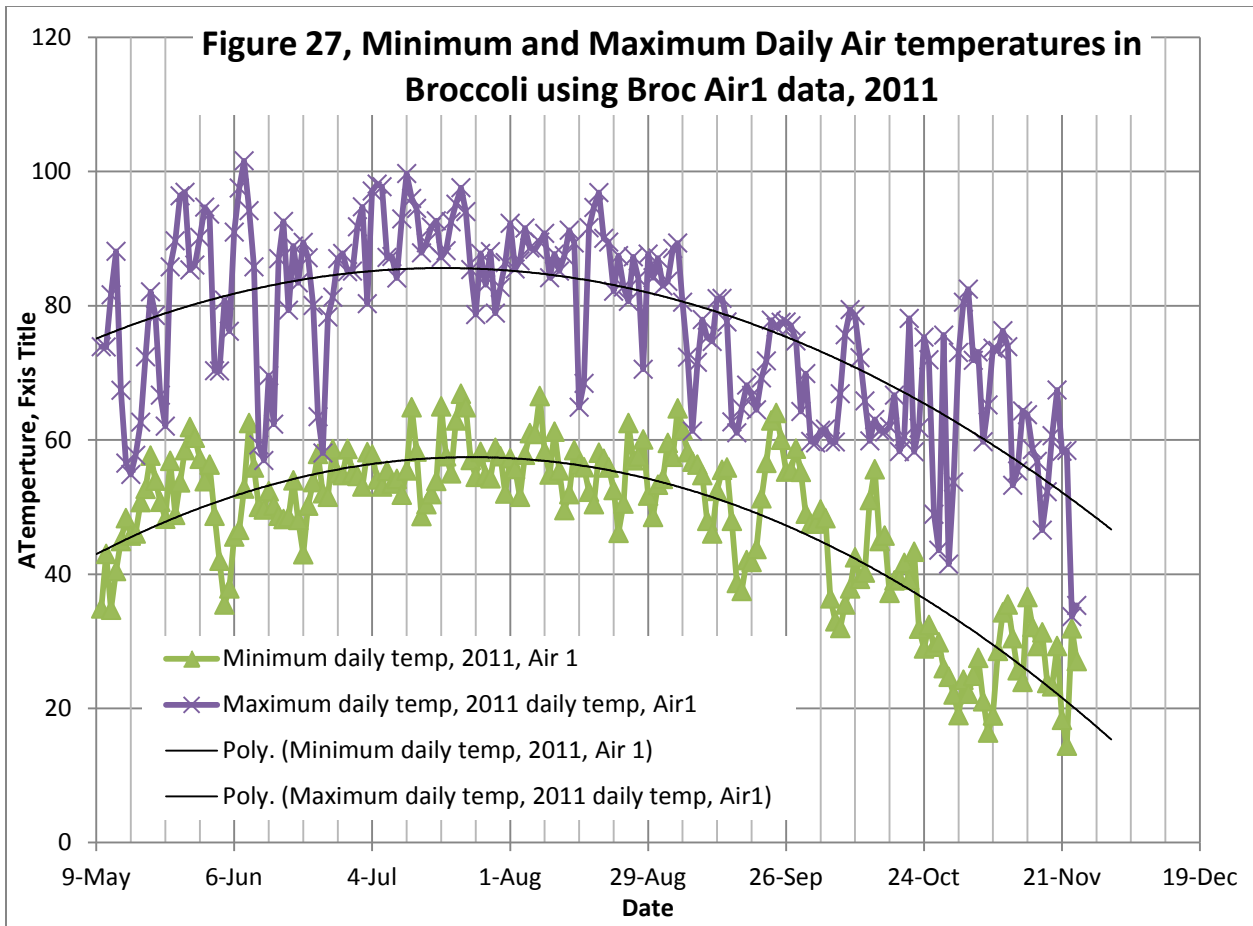


**Figure 25, Harvest Date Vs Seeding Date for Vulcan Lettuce,
2011 data**



**Figure 26, Vulcan Lettuce,
Cumulative Daylight hours * GDD, 40F Average, GDDf from Seeding**





**Figure 29, Temperatures in the three Crops on
May 15, 2011**

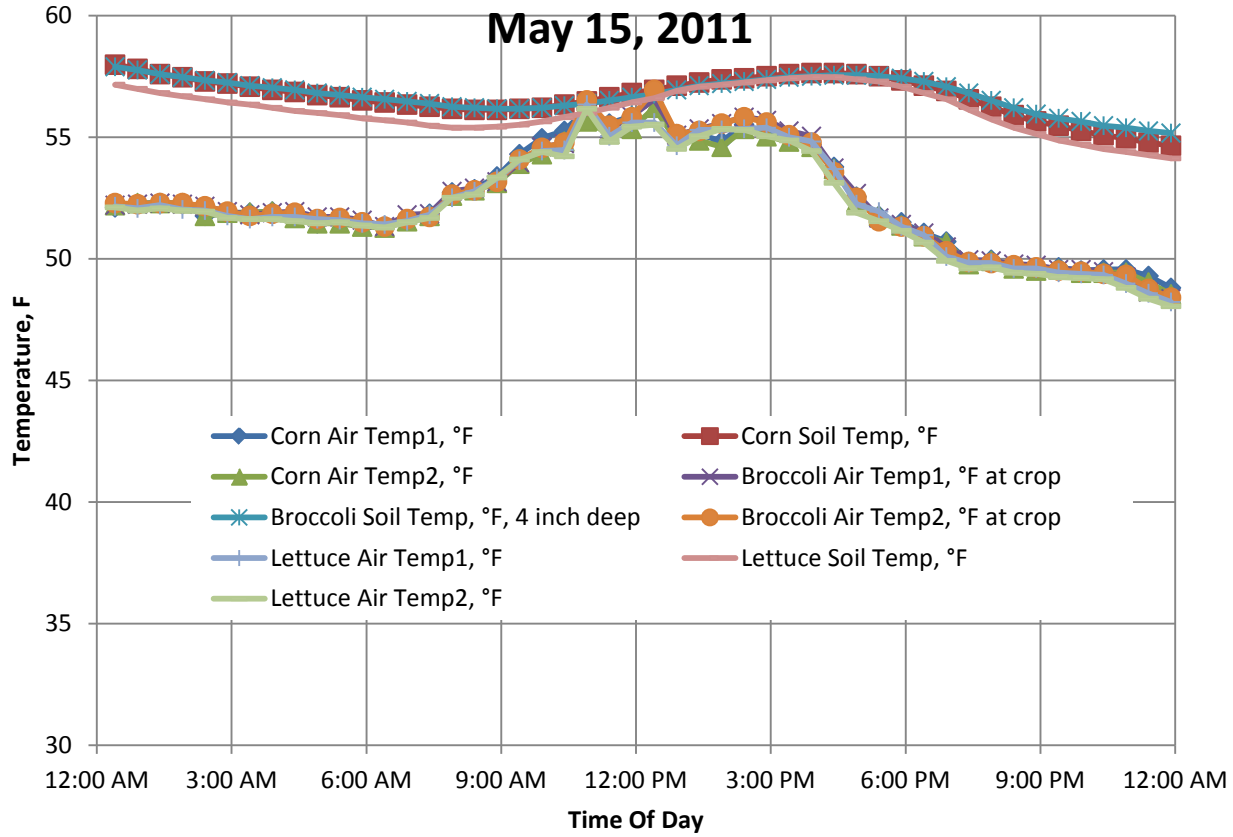


Figure 30, Temperatures in the three Crops on 6-15-2011

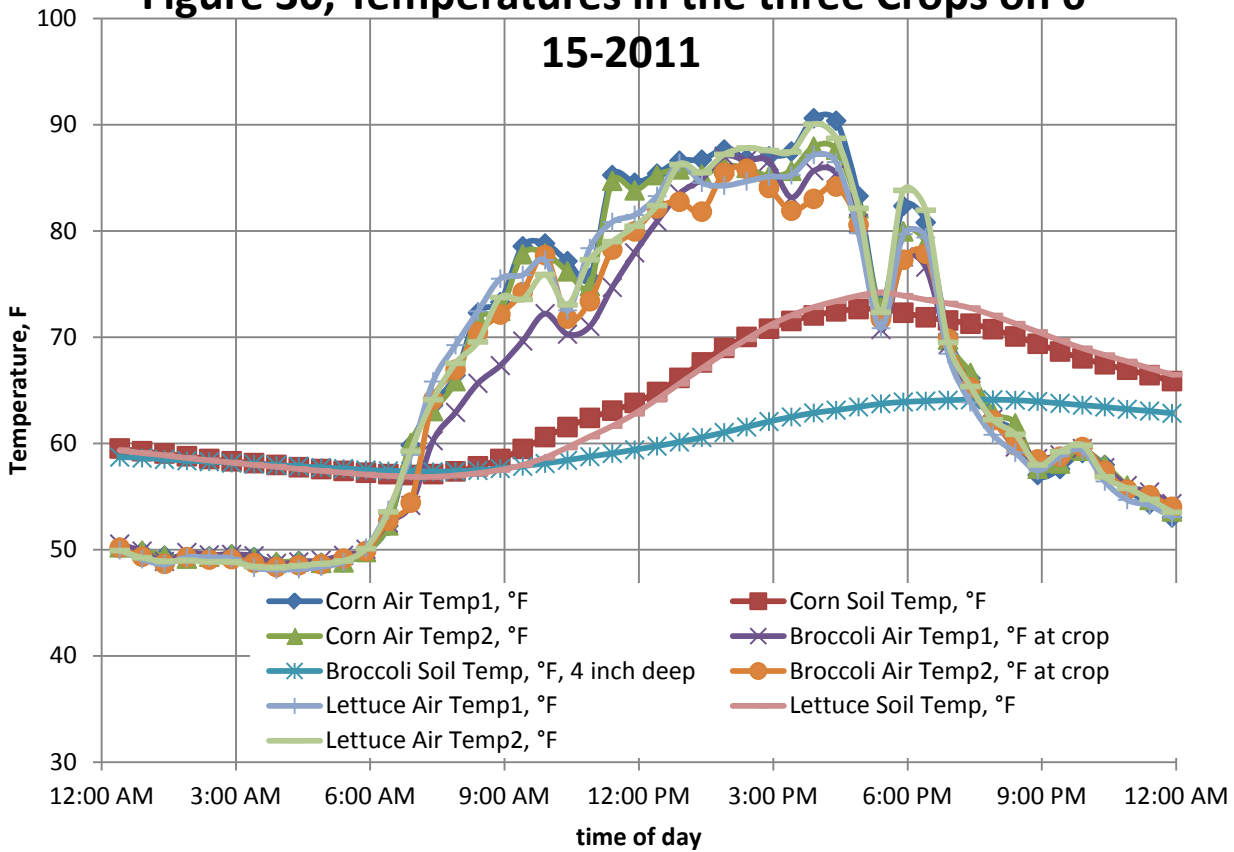


Figure 31, Temperatures in the three Crops on 8-15-2011

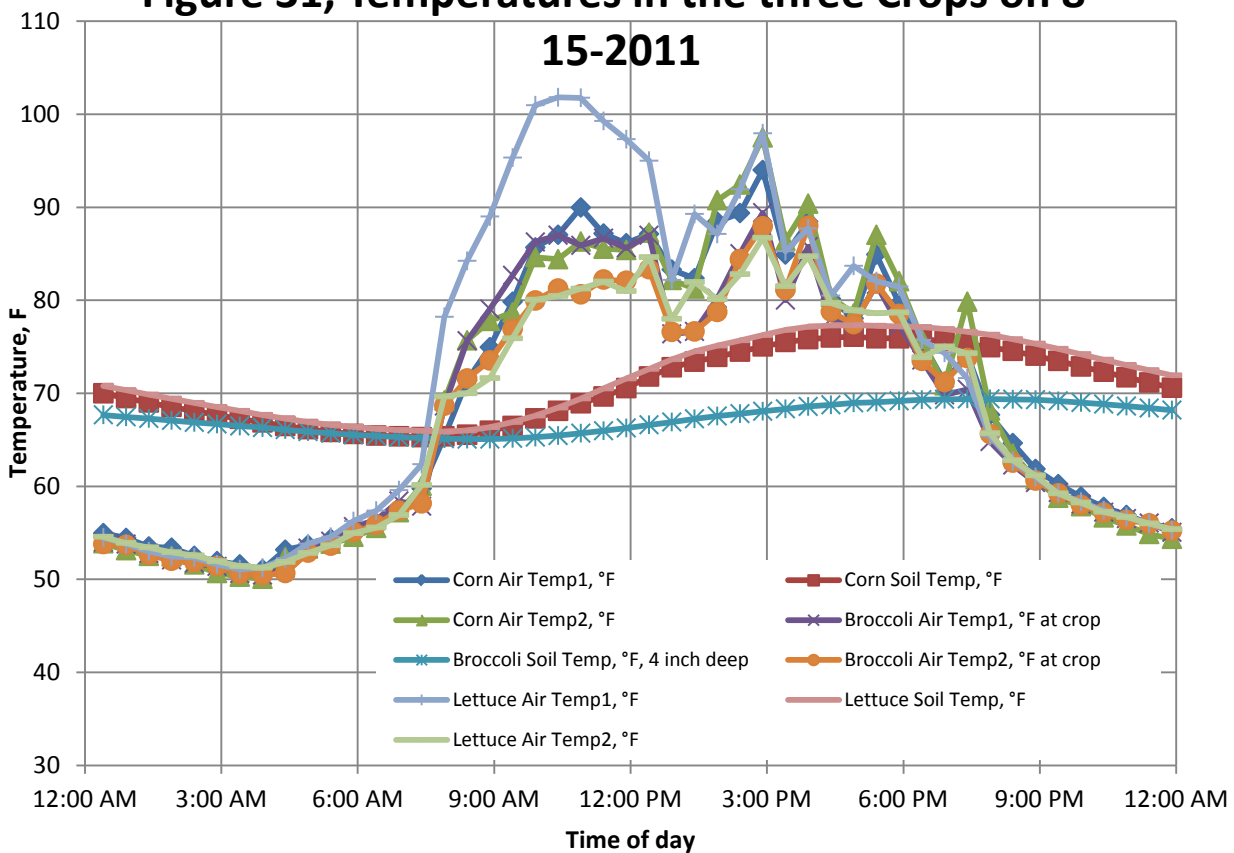


Figure 32, Temperature for the three Crops on August 1, 2011

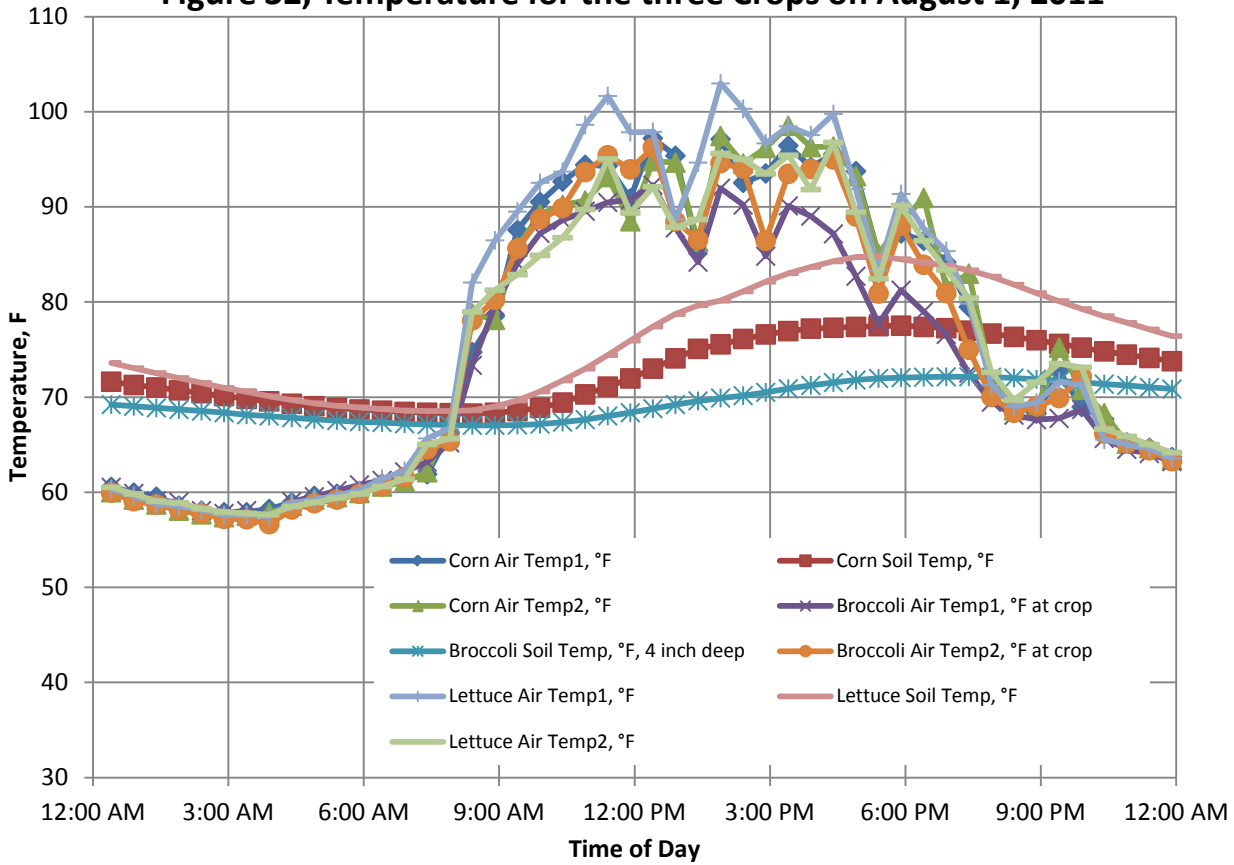


Figure 33, Temperature in the three Crops 8-15-2011

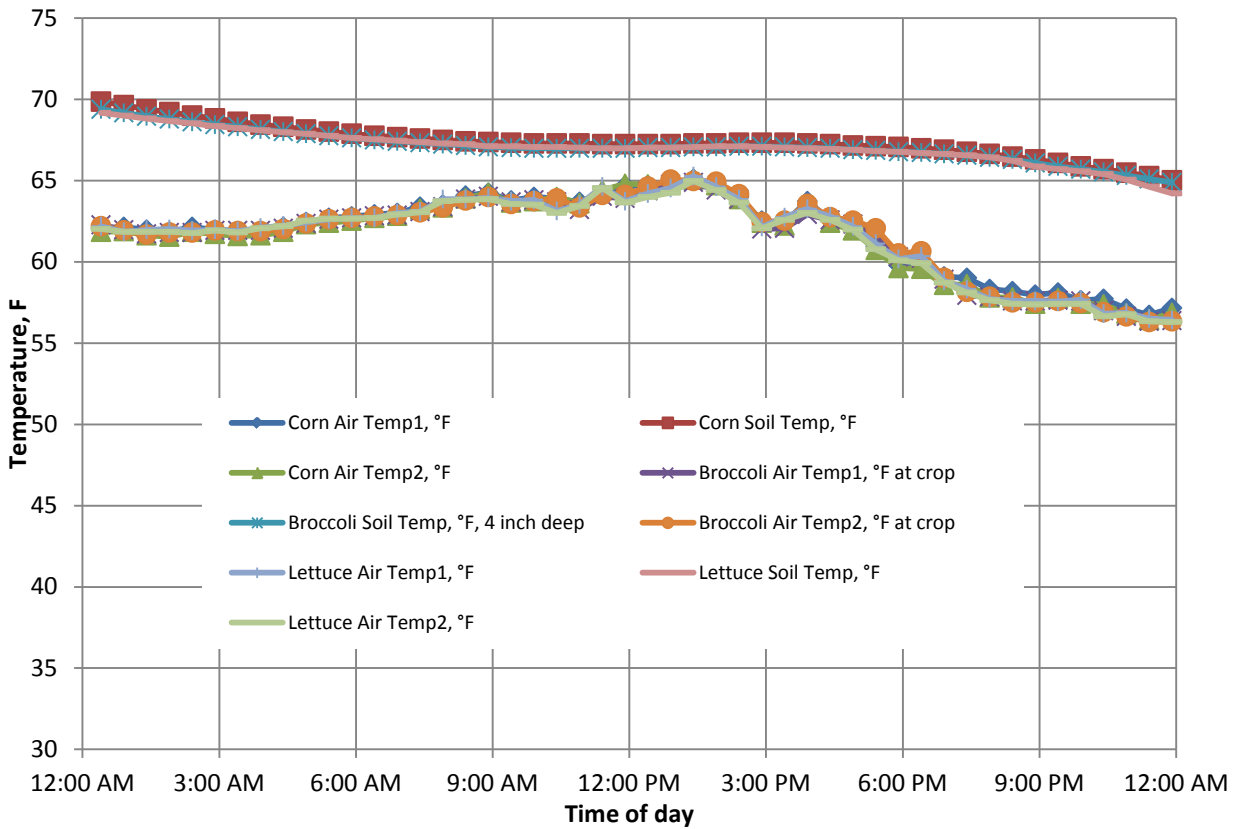


Figure 34, Temperatures in the three Crops 9-15-2011

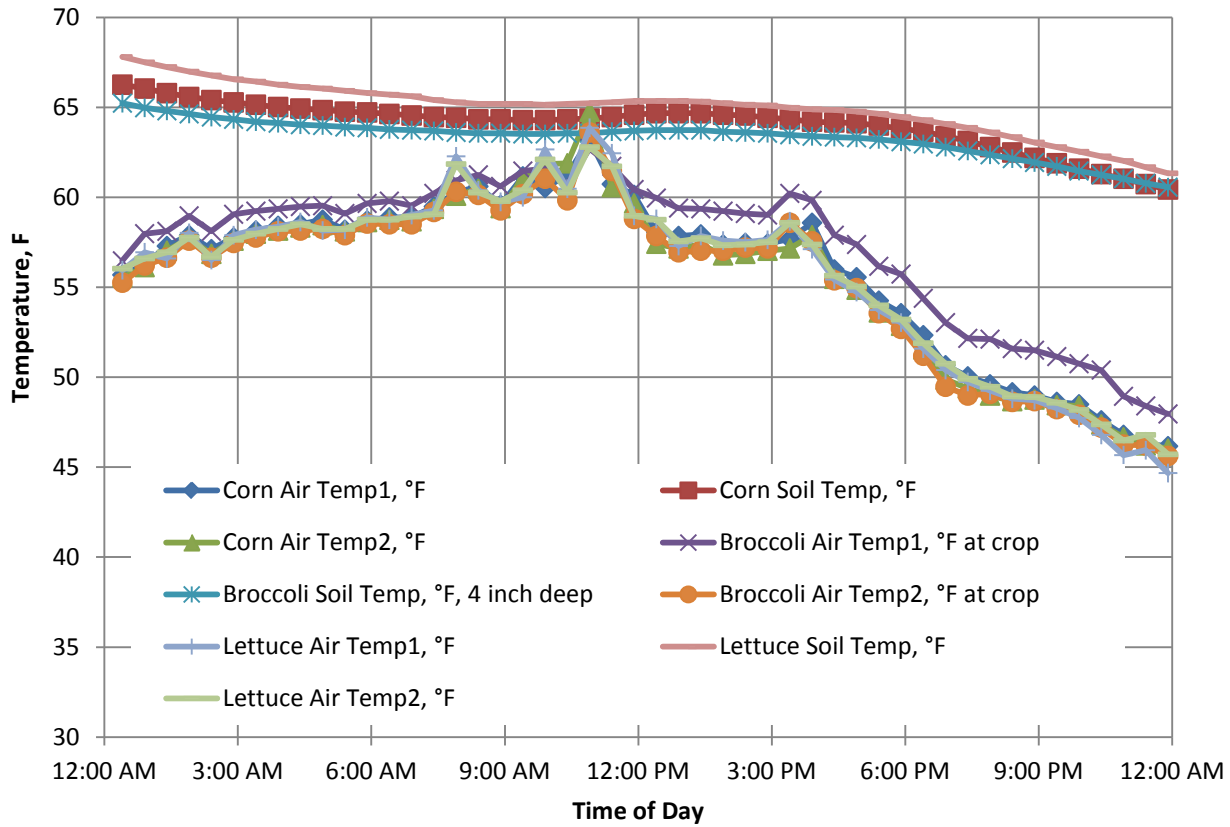


Figure 35, Temperature in two Crops on October 15, 2011

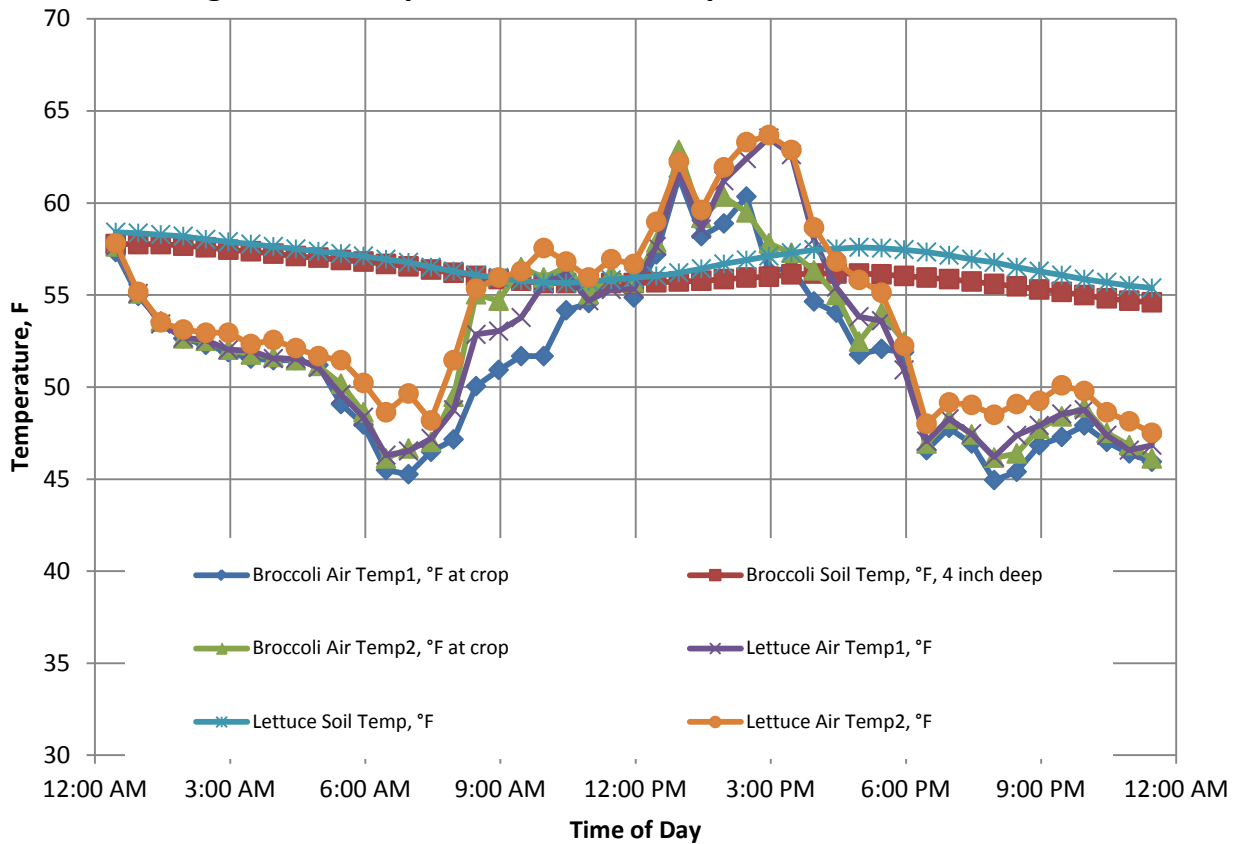


Figure 36, Soil Temperatures in the three crops 2011

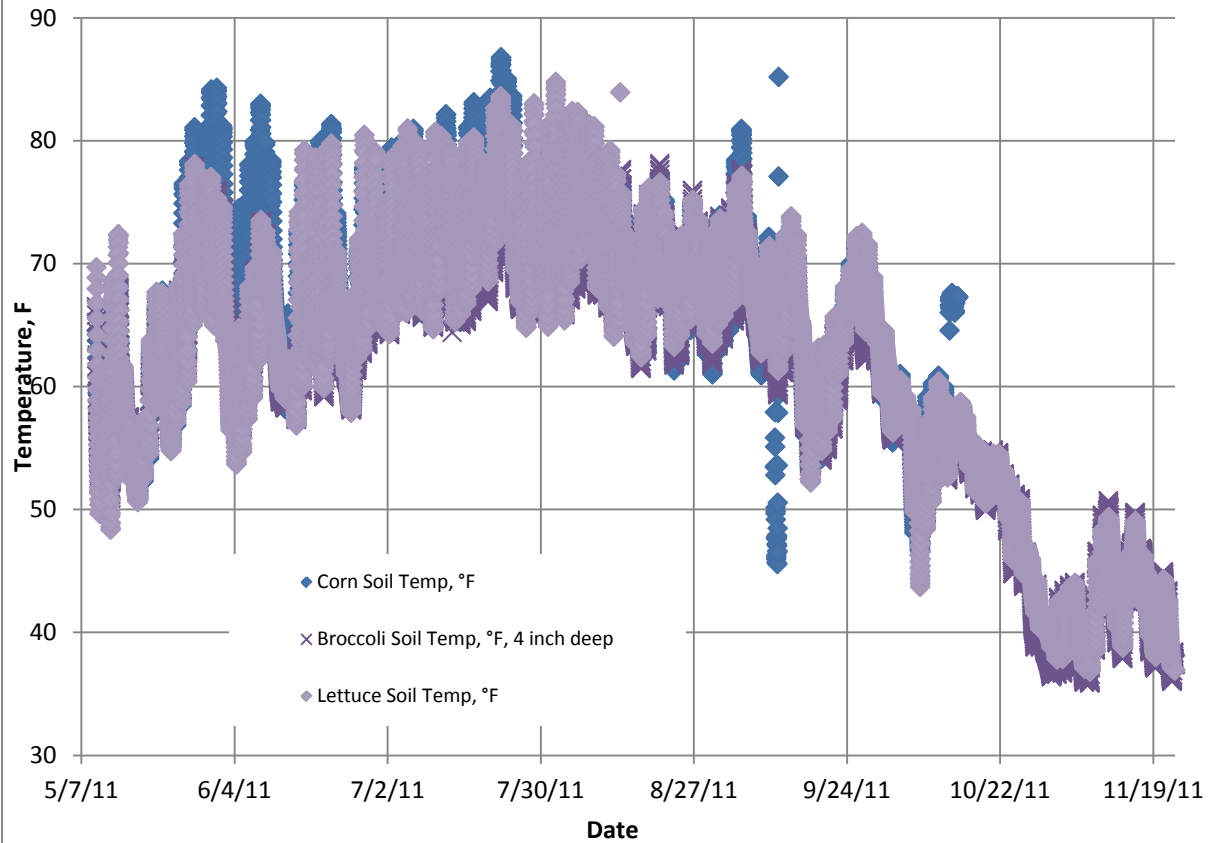


Figure 37, Broccoli - Lettuce Soil Temp, °F

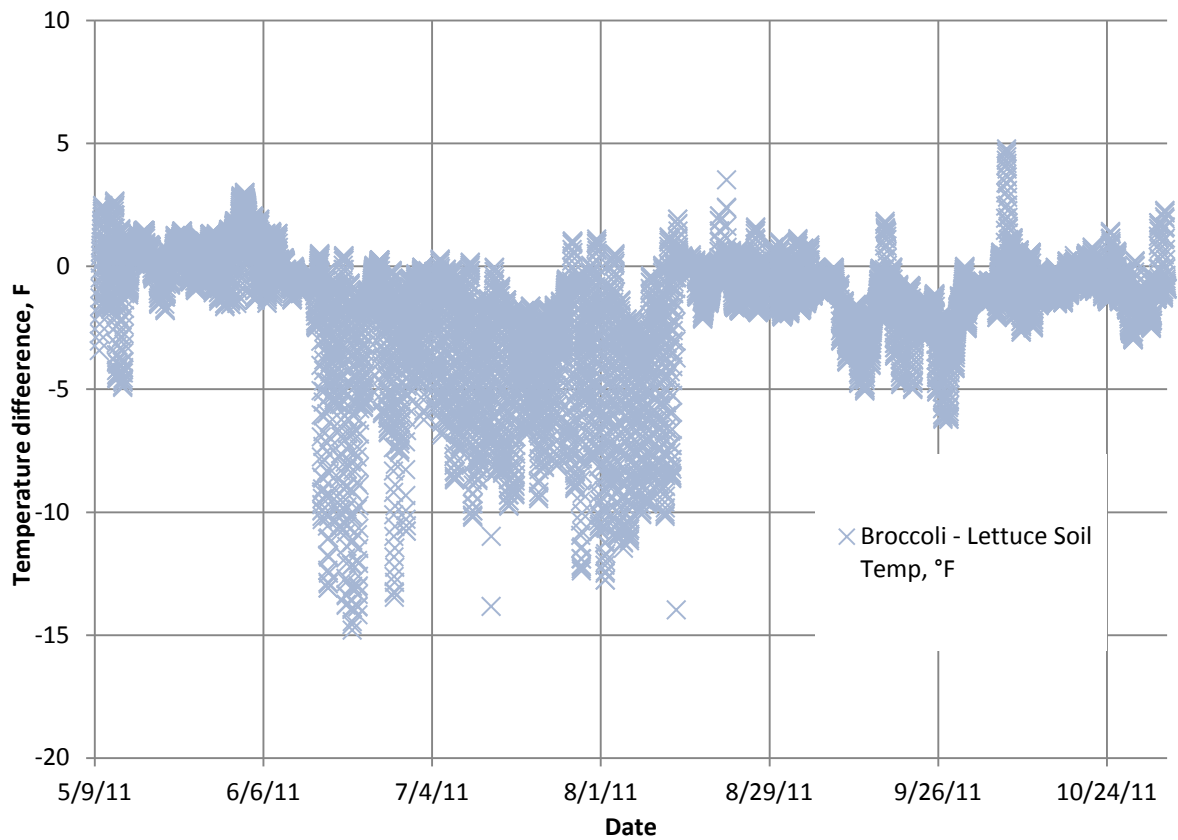
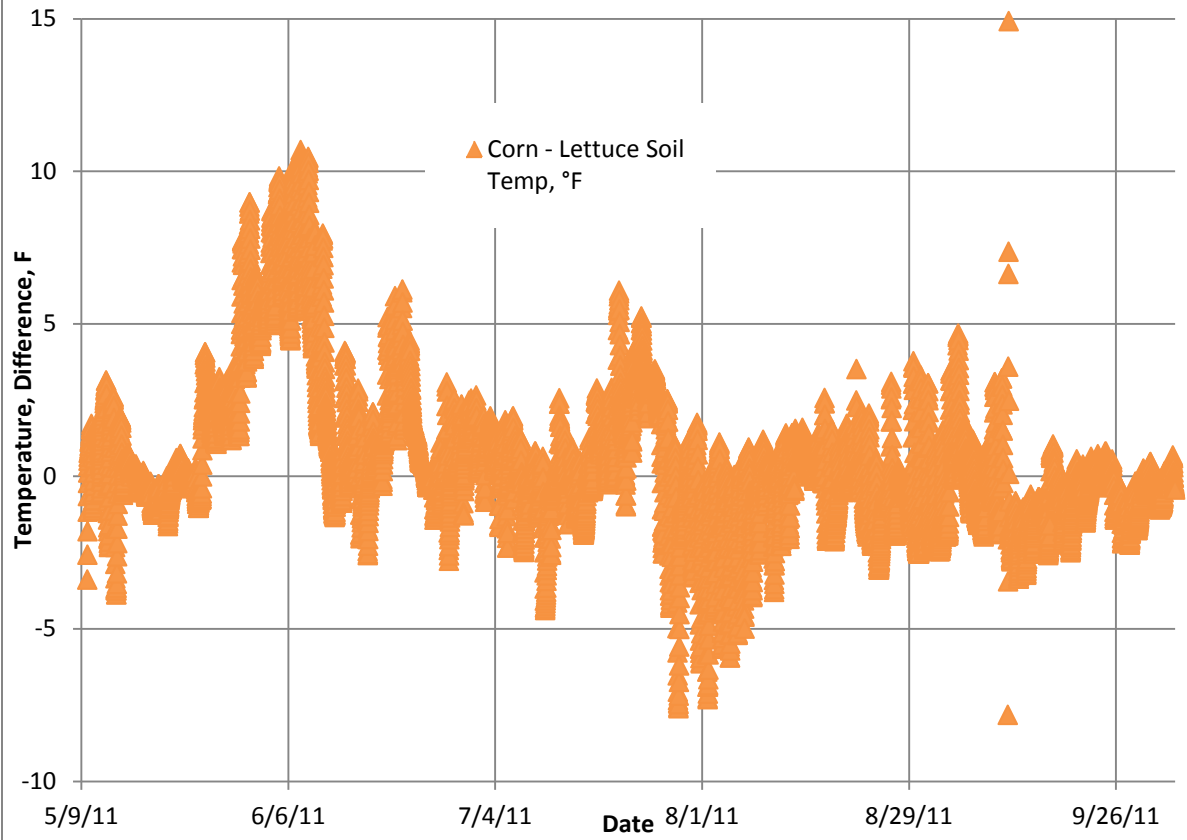


Figure 38, Corn - Lettuce Soil Temp, °F



Photos

Below. A planting of Broccoli in seeding area. Note tag.



Thermal probes in Broccoli





Thermal probes in Broccoli on plastic



Corn just before transplanting, in seeding are. Note tags.



First planting of Corn

Soil temperature probe in Corn soon after transplant and initial setup.



Air temperature 1 (lower) probe in Corn soon after transplant and initial setup. Note Datalogger as well.



Corn, 1st three plantings and probes just after setup





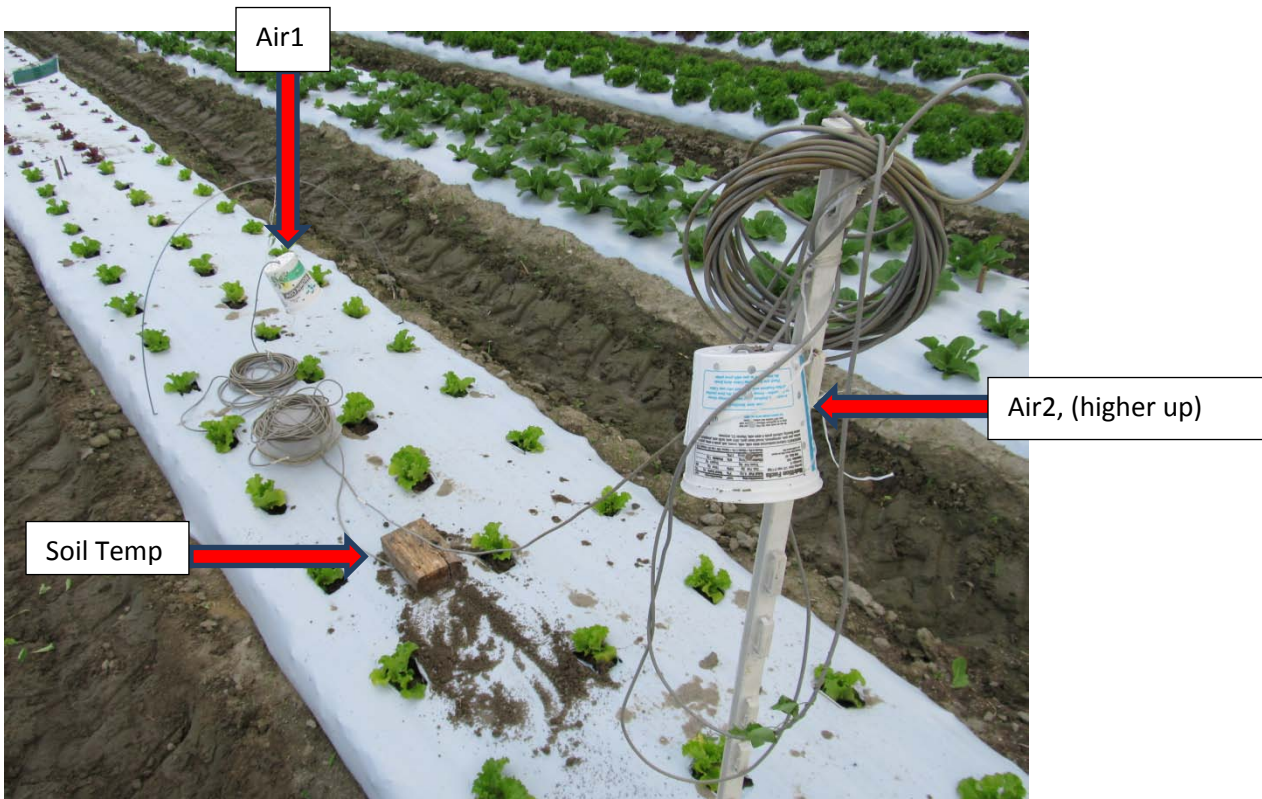
Sensors in first 3 plantings of lettuce and 2 plantings of broccoli (no plastic)



Note tags in the field for different plantings. Also Lettuce thermal probes.

Lettuce during harvest, note a few heads left to see when they bolt.





Three sensors in lettuce