

## BETHANY PRAIRIE FELLOWSHIP 1978-2011

Our life's journey is often a series of epiphanies creating a time line that tells the story.

- ◆ 1978 — Dick and Linda Grotberg and Dick and Kay Lovstrand joined together to live, work and raise their children for Christ. The Grotberg's Barnes County farm became the home of Bethany Prairie Fellowship (BPF). The farming activities included conventional small grains, dairy, farrow to finish confinement hogs.
- ◆ Bethany Prairie Village appeared as the church building, country school, and several houses were moved to the farm site. A hospitality ministry, home school plays, Memorial Day Graduation Picnics, and weddings hosted guests from near and far.
- ◆ 2000 — Kay left the farm and went back to Minneapolis, Dick Lovstrand chose to stay and continue as lay pastor of Bethany Prairie Church, full time partner in the farming operation, and maintenance manager of the physical plant until his death on October 5, 2011.
- ◆ 2005 — Bethany Prairie Farm went organic.
- ◆ 2007— The dream of the Fellowship was finally realized when the Grotberg's were able to deed their land and property to Bethany Prairie Fellowship.
- ◆ 2006 — 2011 Prairie Farm Pilot Project became the umbrella for BPF's sustainable projects—The pastured poultry institute, restoring the land and healing the soil, home grown fuel, heritage Scottish Highland Cattle. Outreach included Field Days, farm tours, demonstrations, and workshops.



Dick Lovstrand  
1942— 2011

A link for the picture story of the preparation, funeral, and burial can be found at:  
<http://www.youtube.com/watch?v=-uZ80bwwurU>

A Special Thank You  
Thank you to each one of you — our friends, partners, neighbors, loved ones, for the gifts you have given us through the years and especially now. Gifts of caring, compassion, support, service, kindness, love. Gifts that will last forever. May God bless you richly!  
Dick and Linda  
for the Bethany Prairie Family

Bethany Prairie Fellowship Board  
Chairman—Dick Grotberg  
Secretary/Treasurer—Linda Grotberg  
Advisory Board  
Josh and Carolyn Abraham  
Dan and Nancy Germo,  
Jeff and Laurie Korum,

## Bethany Prairie Fellowship 2012



We are committed to the “God the Father Almighty, Maker of heaven and earth” world view; therefore we are committed to sustainable, organic, responsible agriculture. We are convinced that it is our responsibility to share the concept with others by how we live, what we think, and what we eat.

We invite you to come to the farm for a visit. Enjoy the tranquil beauty of the prairie, with its open spaces, exquisite sun rise and sun set, a sky full of stars, native birds and many kinds of animals. Appreciate the holistic restoration of the small farm and its land back to its natural health. Share a meal, and truly put a face with the food that we produce from God's green earth, sunshine, and pure water. Take home a renewed sense of God's Presence and a deeper appreciation of His good earth, gentle animals and nourishing food.



Bethany Prairie is God's gift to us. There is no charge for our hospitality. If you wish to give to the ministry, donations are appreciated but not required.

### Contact Us

Phone: 701-435-2333  
Cell: 701-320-9535  
E-mail: [lindag@daktel.com](mailto:lindag@daktel.com)  
[www.bethanyprairie.blogspot.com](http://www.bethanyprairie.blogspot.com)

Dick & Linda Grotberg  
2333 99th Ave SE  
Wimbledon, ND 58492

# PRAIRIE FARM PILOT PROJECT

Making the Small Farm Sustainable - One Project At A Time

2011 Projects and Partners



Walder Mfg.  
Wittenberg,  
Wisconsin

**Prairie Farm Renewable Fuels Project**

Northwest  
Minnesota  
Regional  
Sustainable  
Development  
Partnership



Paul Aakre  
ASM Dept.  
University of  
Minnesota  
Crookston



Oil press project  
wins Civic Ventures  
Launch Pad Contest

**Restoring the Land  
Healing the Soil**



Organic No-till

NCR-SARE  
Farmer Rancher  
Grant

**"Multi-Species  
Cover Crops  
Control Weeds  
and Improve  
Fertility In  
Organic No-Till  
Fields "**

USDA—NRCS

Conservation  
Stewardship  
Program (CSP)

Organic  
Environmental  
Quality  
Incentive  
Program (EQIP)



Rolling Bio-mass



Managed Grazing

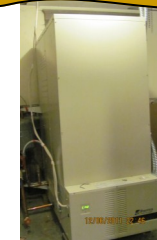


Multi-  
species  
cover  
crops



**Turning The Dinosaur Into An Ark**

The 30 year old central  
coal heating system has  
been replaced with a  
Steffes Thermal Storage  
Boiler in the Big House and  
high efficiency propane  
boilers and solar panels in  
the smaller houses.



**Sustainable, Affordable Heating  
Demonstration Projects In Cooperation  
with ND Dept. of Energy, Community  
Action, and Bethany Prairie**



Rainfall Simulator Demonstration  
BPF Field Day