

mmme

MICRONESIA MANAGEMENT & MARKETING ENTERPRISES



P.O. Box 807 / Kosrae FM 96944 / Ph.: +691 370 2069 / Email: info@imtrona.de

- **Kosrae State registered business**
- **To culture and trade in a wide range of aquaculture commodities**
- **Main focus :**
 - 1. to be self sustainable as a private company**
 - 2. to culture and export marine commodities for the international marine aquarium industry**
 - 3. export orientated with more local employment**
 - 4. increase & promote aquaculture activities in Kosrae / FSM**
 - 5. sustainable & environmental friendly**
 - 6. work close with the Government's on reseeded activities**

- 2003: 1st contact to the FSM
- 2004: 1st visit of the FSM Nat. Government and Kosrae State
- 2005: Established MMME
- 2005: 1st export of Giant Clams from the National Aquaculture Center
- 2007: Start commercial coral farming with a 100% private investment.
3 coral farms: Lelu, Utwe, Tafunsak
- 2008: Nov.2008, the National Aquaculture Center was privatized
- 2009: Giant Clam spawning for local food markets (*H. hippopus*)
- 2009: Reseeding project of 50,000 Giant Clams (*T. maxima*)
- 2010: Spawning of *Trochus* for reseeded in partnership with MRK/Kirma
- 2011: Start ornamental fish export to be included

Employment today: 12 FSM & 2 foreigner worker

National Aquaculture Center Nov. 2008



National Aquaculture Center “January 2009”



Export packing:



National Aquaculture Center



P.O. Box 807

Kosrae, FSM

96944

Tel:691-370-2069

info@imtrona.de

Product of Kosrae

Federated States of Micronesia

Giant Clam Spawning and Reseeding Project

December, 2009

Reef flat where the clams are to be reseeded
December 15, 2009: 50,000+ juveniles were
transferred



Local Food Clam Project

Year: 2009

Spawning for future
local food markets &
Local farmers

Hippopus for farmers

“local food market”



Adult Clam 7-10 years old



Juvenile 1 year old

Coral Farming Project

Commercial start: 2007

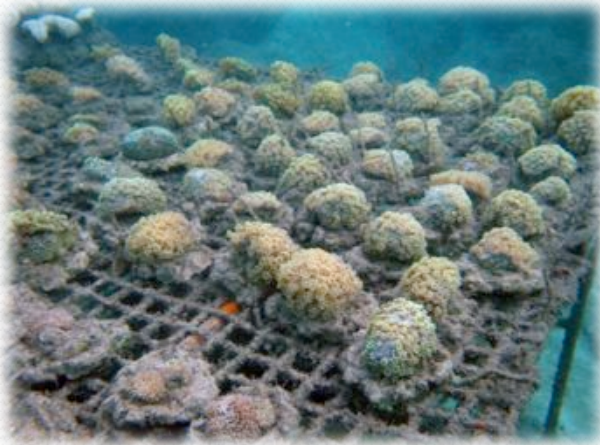
Corals are grown from small pieces, glued to cement cookies.



Coral Farming



Planting



Reef Site Grow-Out



Finished Product

Corals for re-fragmentation



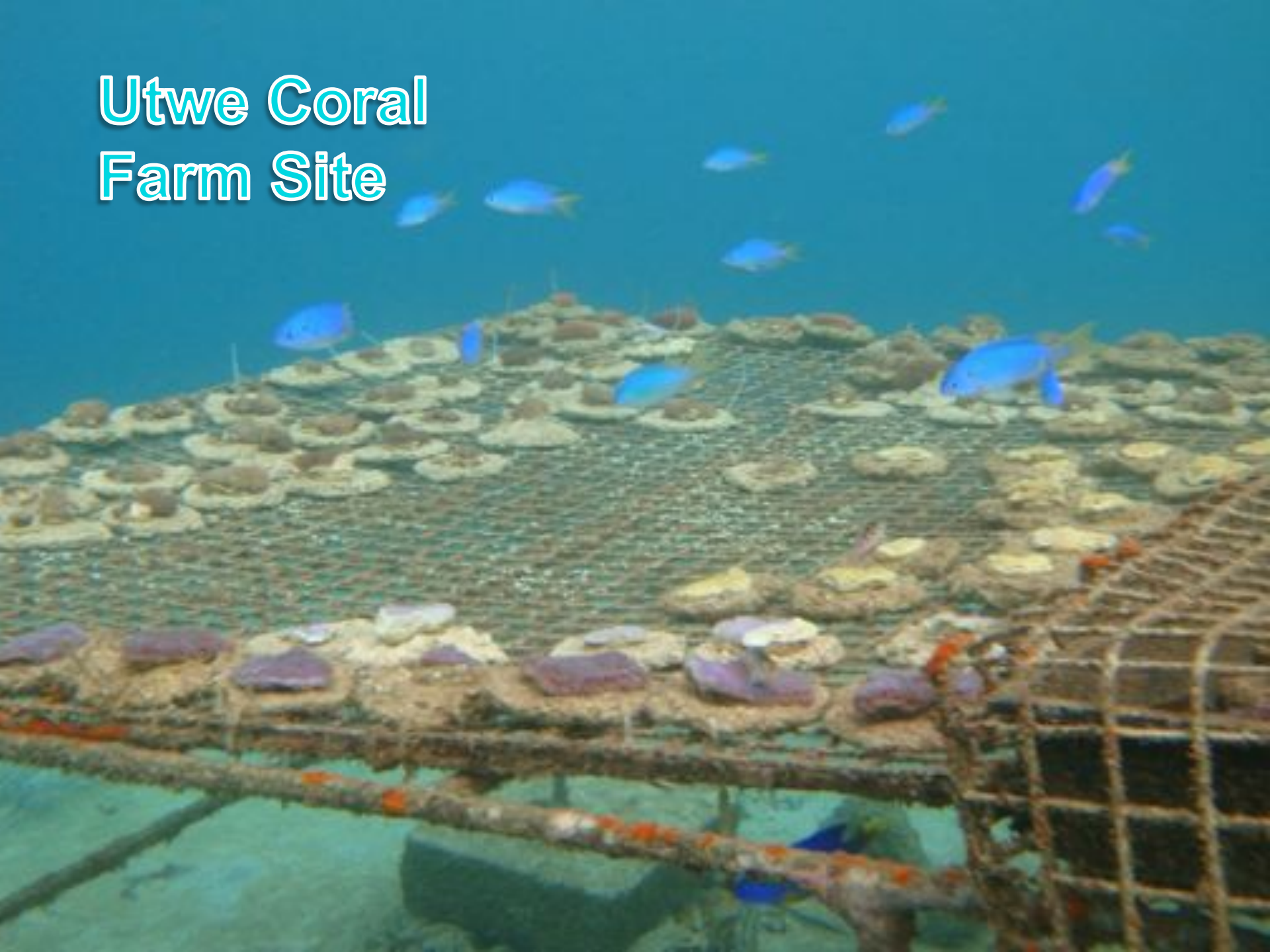


Local Coral Farmer

New artificial habitat for fish



Utwe Coral Farm Site



Trochus Spawning for Reseeding Project

August 2010



August 2010
Trochus spawning
for reseeding

Trochus eggs day 2 after spawning

**August 2011: KSA-Fisheries
reseeded 1600+ juv. Trochus**

Ornamental Fish Export Project

Commercial start: 2011

2010 Received Permit For Fish Export Start building



Oct/Nov 2010 Building completed





Employment situation

NAC under FSM: Total staff 3 to 4 → annual budget \$100,000 → no export

NAC under MMME: Total staff 13 → no FSM budget → export



Hatchery: 1 office; 1 Sen. Technician; 1 Jun. Technician



Coral farm: 2 Coral farmer
2 Clam/coral farmer



Fish section: 1 fish specialist
1 boat captain
2 local fish collector
2 foreigner fish collector / Visa!

Summary

Evidence: Sustainable export out of local resources can be possible here in Micronesia.

Airline: The airline situation must be considered as critical and biggest risk for the operation.

What we have:

- 3 commodities Live Fish, Live clams & fragmented corals
- Highest quality level from the catch or production up to arrival
- Our customers are: wholesaler around the world

Challenges: How the airline situation has impacts to our export

- ✓ Standing order! Every 2 to 3 weeks to be repeated

Result for the operation:

- Five orders delayed or lined up waiting for space
- Stop fishing and reduction of working hours
- New employment is critical
- Pack and unpack shipments

The future of MMME related to conservation

- Our projects contribute to more awareness of marine life, their sustainable uses and conservation of the natural resources.
- Our sustainable production will be the source of future reseeded programs in Kosrae and Micronesia
- The close relationship with fisheries provides transparency export data's for sustainability of the resources

MMME projects are available for further partnerships with Governments or organizations throughout Micronesia to replenish overharvested reefs.

GOOD Story teller or BIG DREAMER

1. With 29 years of age: started own import business in Germany
2. Travel around the world and establishing or supporting my suppliers to create a high quality arrival condition.
3. Looking for new sources = FSM / Kosrae Clamfarm
4. 2004 First visit with introduction how to expend NAC for self sustainability
5. Feb. 2005 arrival & start
6. March 2005: I plan to give up
 - worst place in the world
 - never export will be possible
 - no space for Kosrae & “fight” for so many issues to get

things done

Many reasons to give up, but three reasons why I am still here:

1. The lovely Micronesia and Kosrae by itself
2. “hopeless”, but so much potential
- and 3.

