

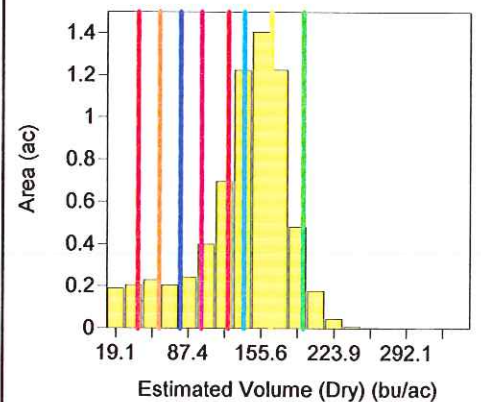
Grain Harvest 2011 - F33(CORN)



Grower : NO Grower
 Farm : NO Farm
 Field : F33
 Year : 2011
 Operation : Grain Harvest
 Crop / Product : CORN
 Op. Instance : Harvest - 1
 Area : 6.743 ac
 Avg. Yield : 128.31 bu/ac
 Avg. Moisture : 17.43 %

Estimated Volume (Dry) (bu/ac)

165.00 - 195.00	(1.589 ac)
140.00 - 165.00	(2.009 ac)
125.00 - 140.00	(0.982 ac)
100.00 - 125.00	(0.730 ac)
80.00 - 100.00	(0.308 ac)
60.00 - 80.00	(0.238 ac)
40.00 - 60.00	(0.286 ac)
10.00 - 40.00	(0.322 ac)



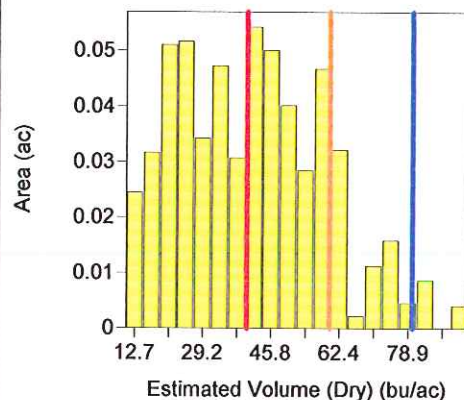
Grain Harvest 2011 - F33(CORN)



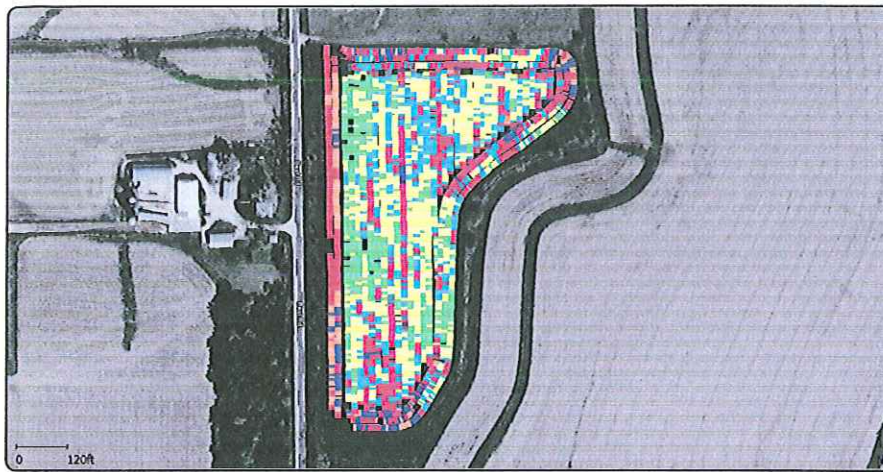
Grower : NO Grower
 Farm : NO Farm
 Field : F33
 Year : 2011
 Operation : Grain Harvest
 Crop / Product : CORN
 Op. Instance : Harvest - 1
 Area : 0.570 ac
 Avg. Yield : 40.31 bu/ac
 Avg. Moisture : 26.50 %

Estimated Volume (Dry) (bu/ac)

165.00 - 195.00	(0.00 ac)
140.00 - 165.00	(0.00 ac)
125.00 - 140.00	(0.00 ac)
100.00 - 125.00	(0.00 ac)
80.00 - 100.00	(0.01 ac)
60.00 - 80.00	(0.07 ac)
40.00 - 60.00	(0.21 ac)
10.00 - 40.00	(0.28 ac)

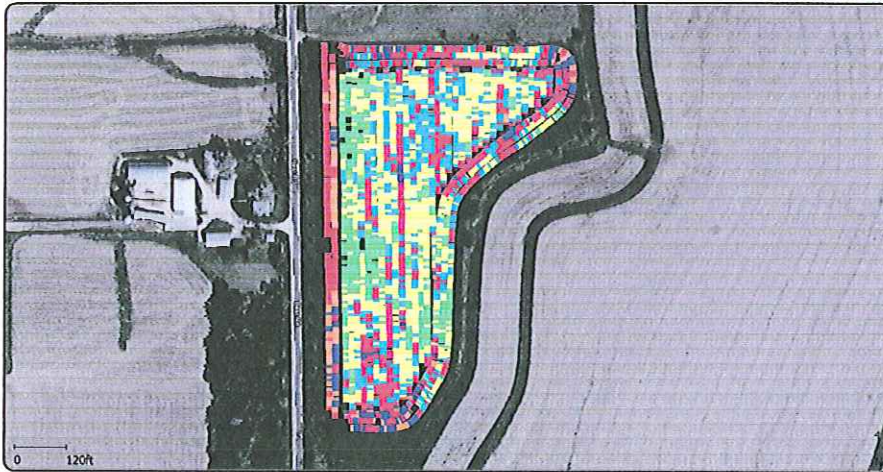


Grain Harvest 2011 - F33(CORN)



Estimated Volume (Dry)
(bu/ac)

165.00 - 195.00	(1.085 ac)
140.00 - 165.00	(2.368 ac)
125.00 - 140.00	(1.330 ac)
100.00 - 125.00	(1.071 ac)
80.00 - 100.00	(0.400 ac)
60.00 - 80.00	(0.288 ac)
40.00 - 60.00	(0.305 ac)
10.00 - 40.00	(0.338 ac)



Estimated Volume (Dry)
(bu/ac)

165.00 - 195.00	(1.085 ac)
140.00 - 165.00	(2.368 ac)
125.00 - 140.00	(1.330 ac)
100.00 - 125.00	(1.071 ac)
80.00 - 100.00	(0.400 ac)
60.00 - 80.00	(0.288 ac)
40.00 - 60.00	(0.305 ac)
10.00 - 40.00	(0.338 ac)



Estimated Volume (Dry)
(bu/ac)

165.00 - 195.00	(1.085 ac)
140.00 - 165.00	(2.368 ac)
125.00 - 140.00	(1.330 ac)
100.00 - 125.00	(1.071 ac)
80.00 - 100.00	(0.400 ac)
60.00 - 80.00	(0.288 ac)
40.00 - 60.00	(0.305 ac)
10.00 - 40.00	(0.338 ac)

Grower : NO Grower

Farm : NO Farm

Field : F33

Year : 2011

Operation : Grain Harvest

Crop / Product : CORN

Op. Instance : Harvest - 1

Area : 7.225 ac

Avg. Yield : 128.31 bu/ac

Avg. Moisture : 17.43 %

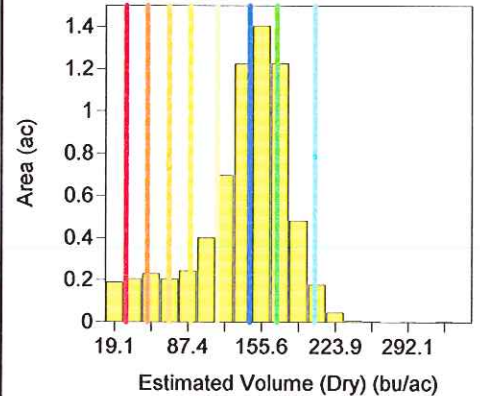
Grain Harvest 2011 - F33(CORN)



Grower : NO Grower
 Farm : NO Farm
 Field : F33
 Year : 2011
 Operation : Grain Harvest
 Crop / Product : CORN
 Op. Instance : Harvest - 1
 Area : 6.743 ac
 Avg. Yield : 128.31 bu/ac
 Avg. Moisture : 17.43 %

Estimated Volume (Dry) (bu/ac)

170.00 - 205.00	(1.305 ac)
145.00 - 170.00	(2.058 ac)
115.00 - 145.00	(1.698 ac)
90.00 - 115.00	(0.565 ac)
70.00 - 90.00	(0.274 ac)
50.00 - 70.00	(0.236 ac)
30.00 - 50.00	(0.262 ac)
10.00 - 30.00	(0.211 ac)



Grain Harvest 2011 - F33(CORN)



Grower : NO Grower
 Farm : NO Farm
 Field : F33
 Year : 2011
 Operation : Grain Harvest
 Crop / Product : CORN
 Op. Instance : Harvest - 1
 Area : 6.743 ac
 Avg. Yield : 128.31 bu/ac
 Avg. Moisture : 17.43 %

Moisture (%)	
26.00 - 35.00	(0.283 ac)
23.00 - 26.00	(0.267 ac)
21.00 - 23.00	(0.006 ac)
19.00 - 21.00	(0.002 ac)
17.50 - 19.00	(0.438 ac)
16.45 - 17.50	(3.522 ac)
14.00 - 16.45	(2.237 ac)
12.60 - 14.00	(0.006 ac)

