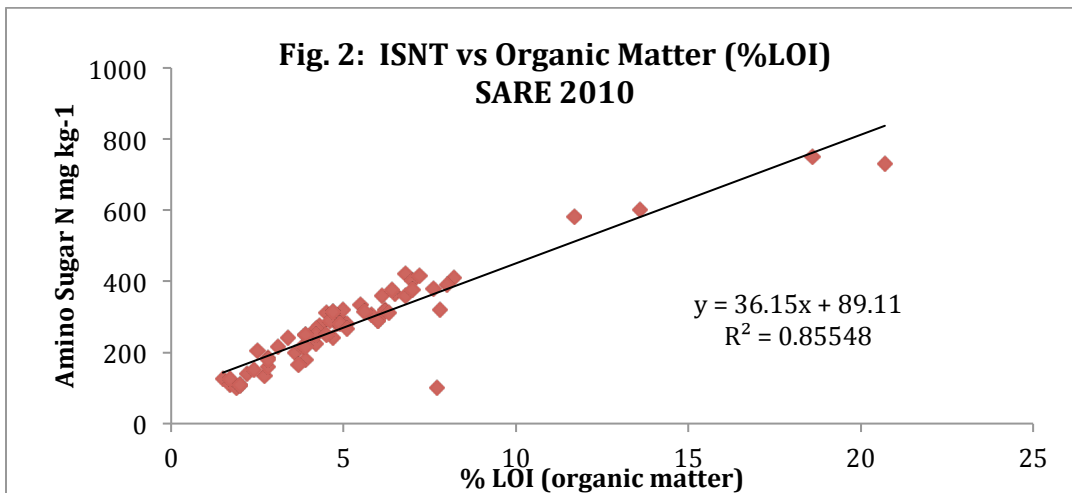
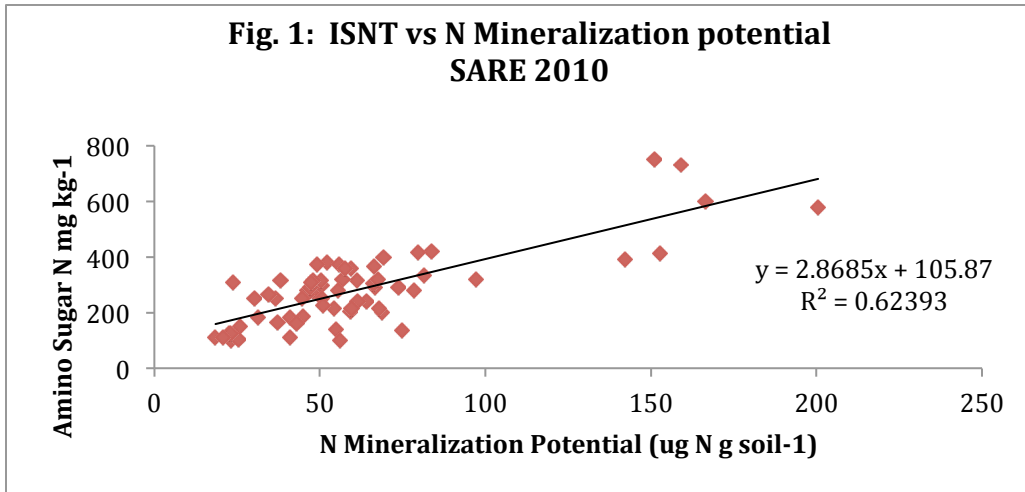
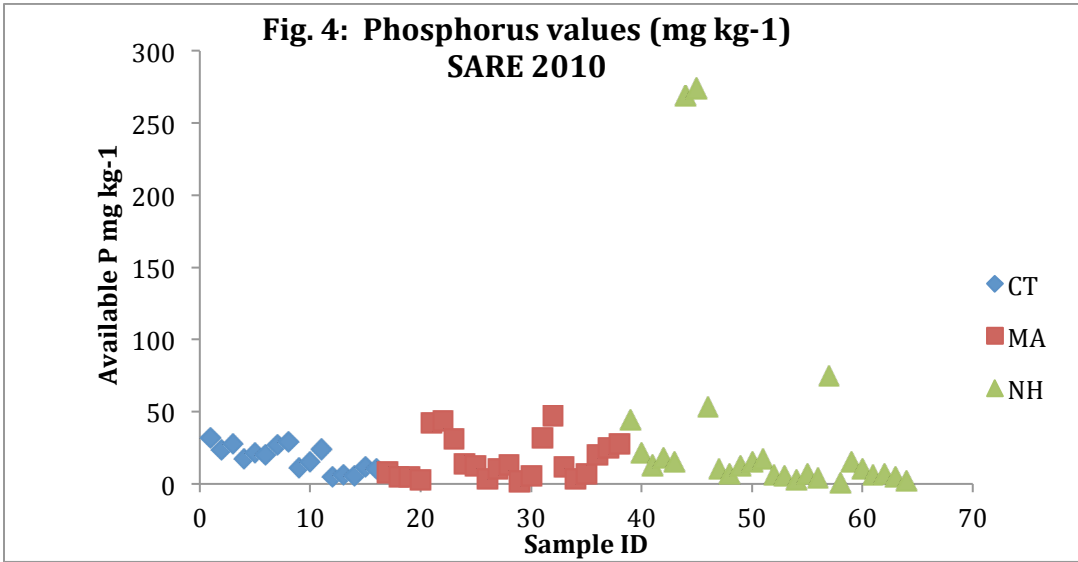
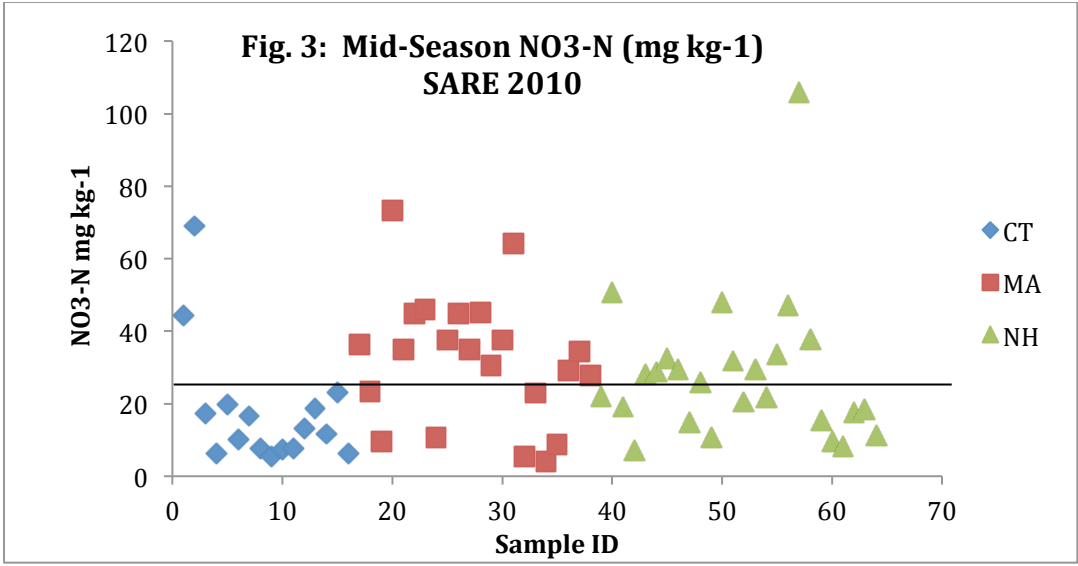
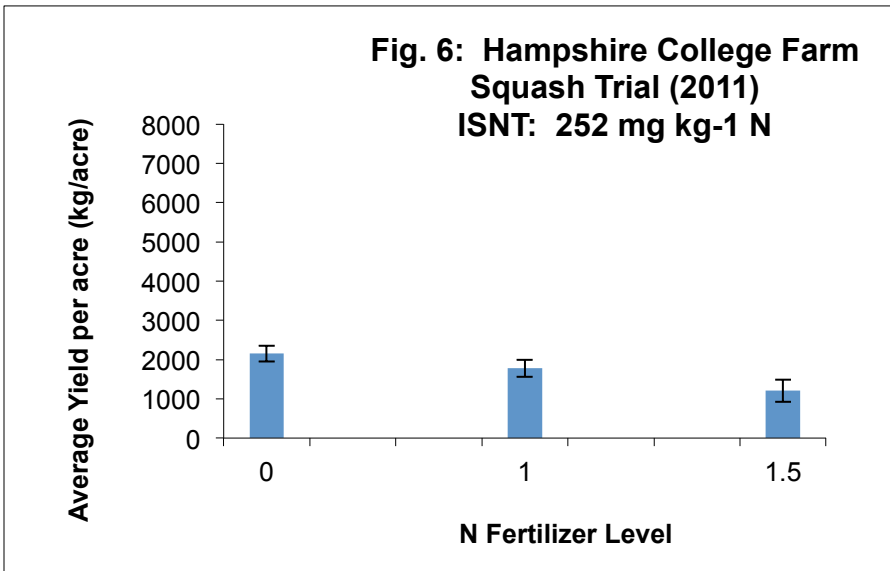
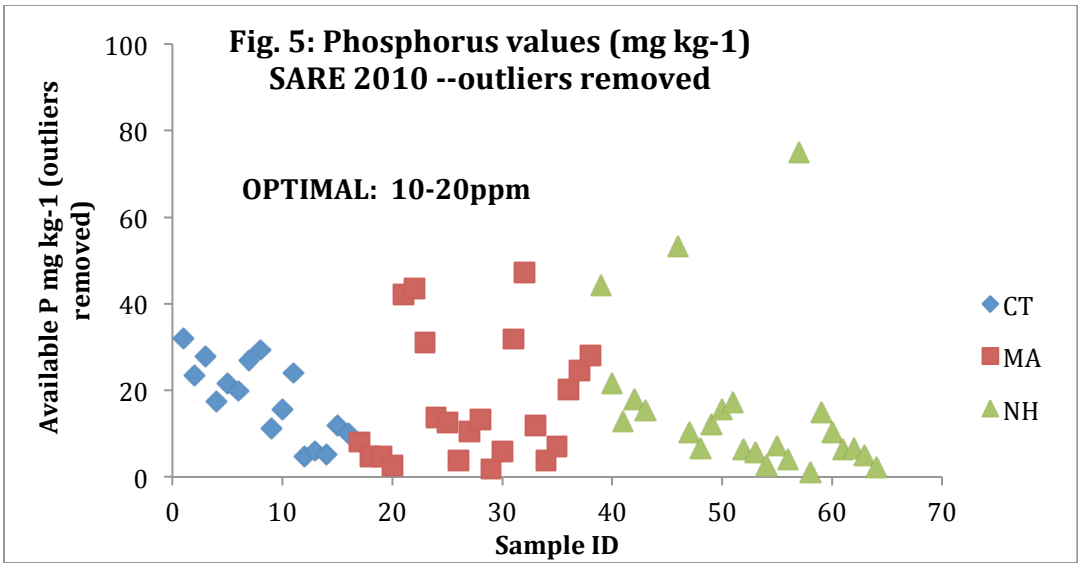


**FIGURES FOR ON FARM RESEARCH OBJECTIVES, RESULTS AND DISCUSSION**

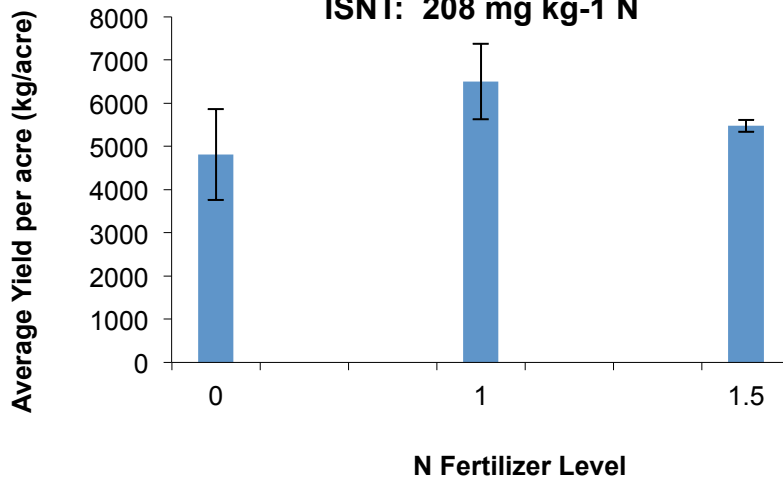
**B.Hooker, SARE LNE09-285**







**Fig 7: Red Fire Farm  
Squash Trial (2011)  
ISNT: 208 mg kg<sup>-1</sup> N**



**Fig. 8: UMass S. Deerfield Farm  
Squash Trial (2011)  
ISNT: 112 mg kg<sup>-1</sup> N**

