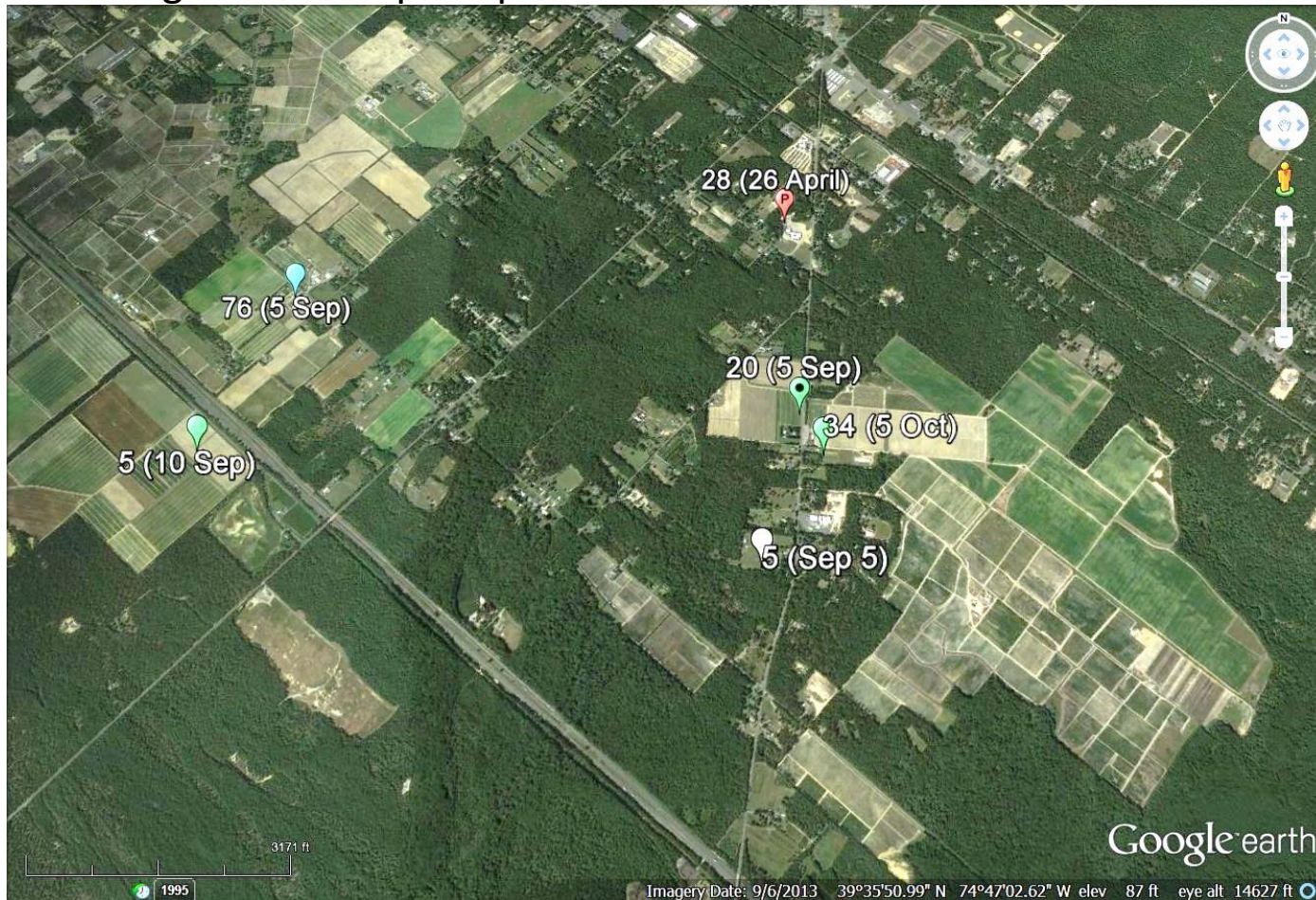


Figure 10: Map of spread in Hammonton area in 2013.



The Hammonton area has been a frequent center of pepper weevil appearance. This year's arrivals were quite few in number. We believe that this is caused by the change in commodity. The past pepper fields near the processor are now used for blueberries. Those pepper fields in the area this year were planted a distance away, so that the hopscotch behavior of the pest was interrupted.