

Fig. 1. CBB behavior on coffee berries: Position A: CBB female is starting to penetrate the exocarp and the abdomen is visible (1A); Position B: CBB has penetrated the berry and a slightly damage of the endosperm is observed but has not yet oviposited (1B); Position C: CBB has invaded the endosperm, oviposited, and immature stages are observed in the galleries (1C).

Figure 2. Average percentage of infested berries \pm SE by *Hypothenemus hampei* before *B. bassiana* applications at three commercial coffee farms located in Kona, Hawaii at 145, 538 and 763 m elevation.

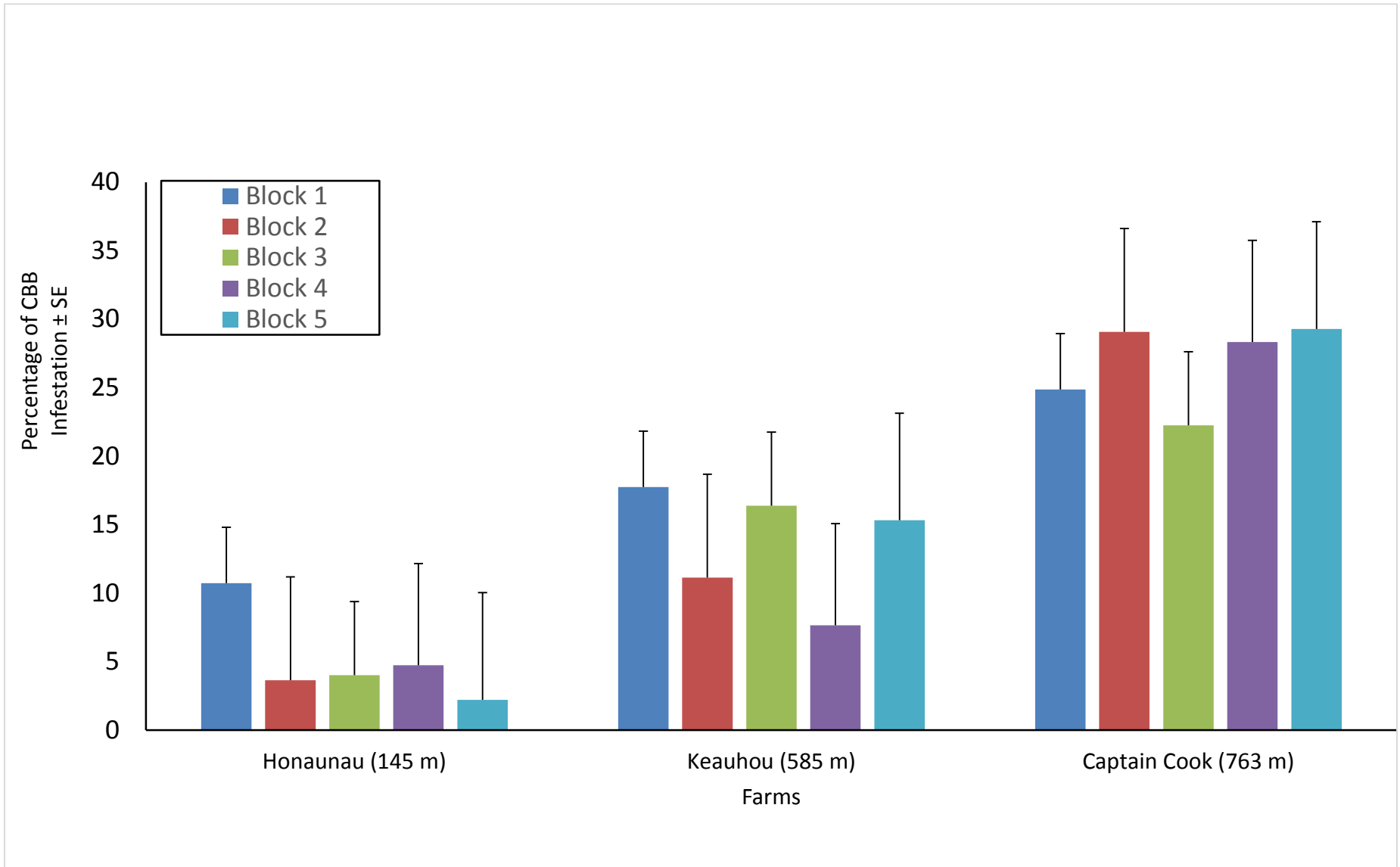
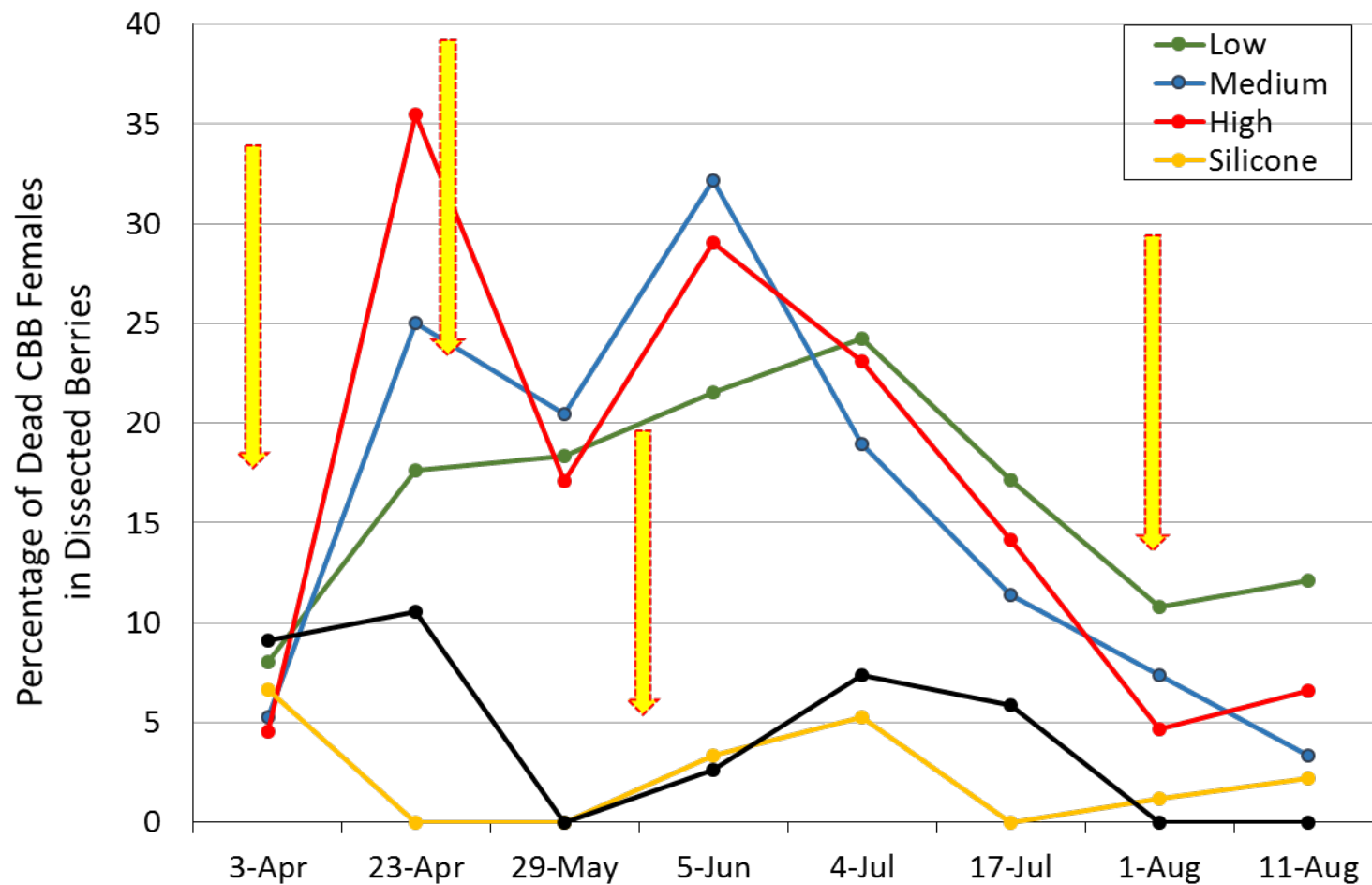
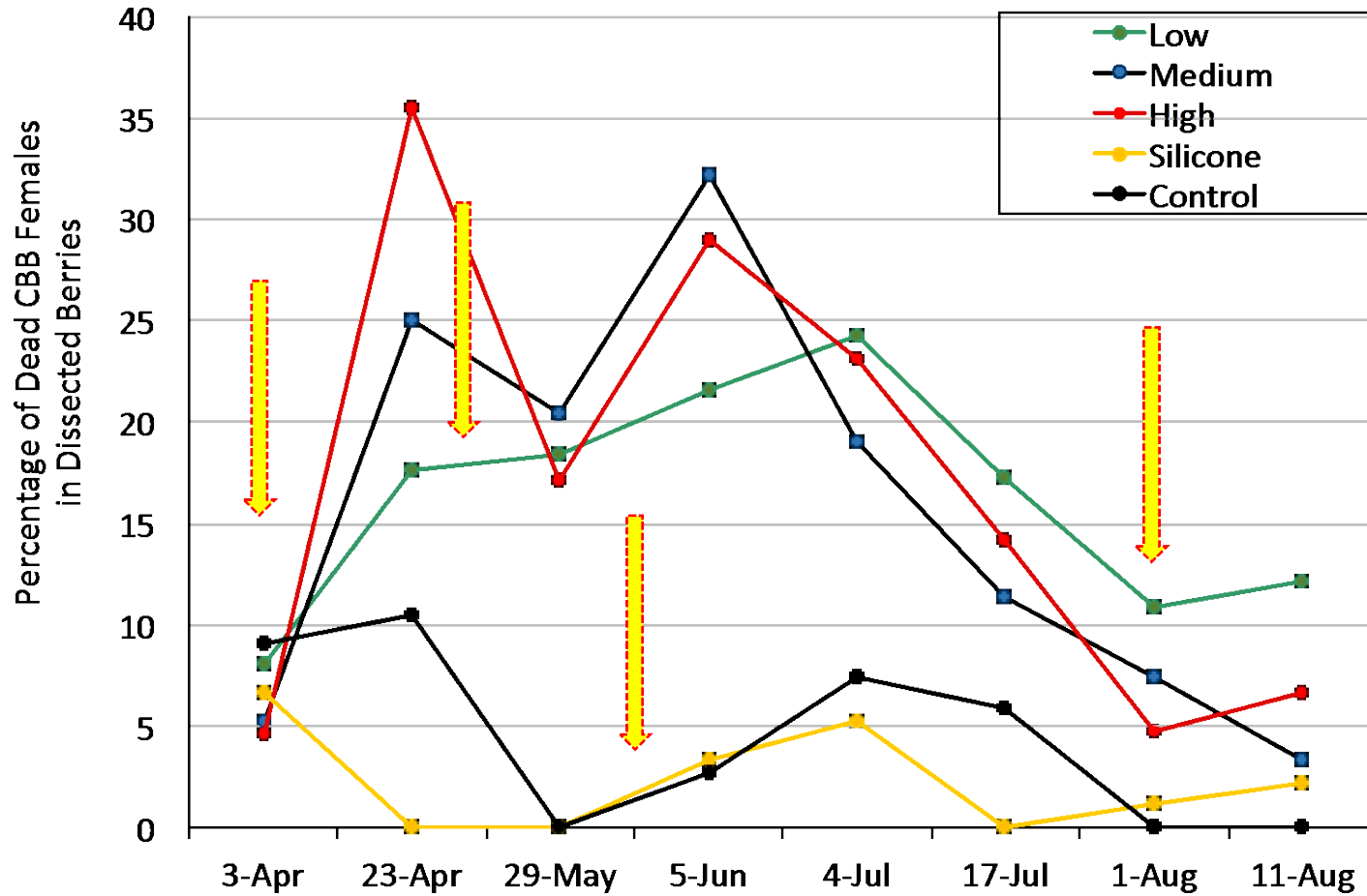


Fig. 3.A. Percentage of dead *H. hampei* females after *B. bassiana* applications in Honaunau, 145m



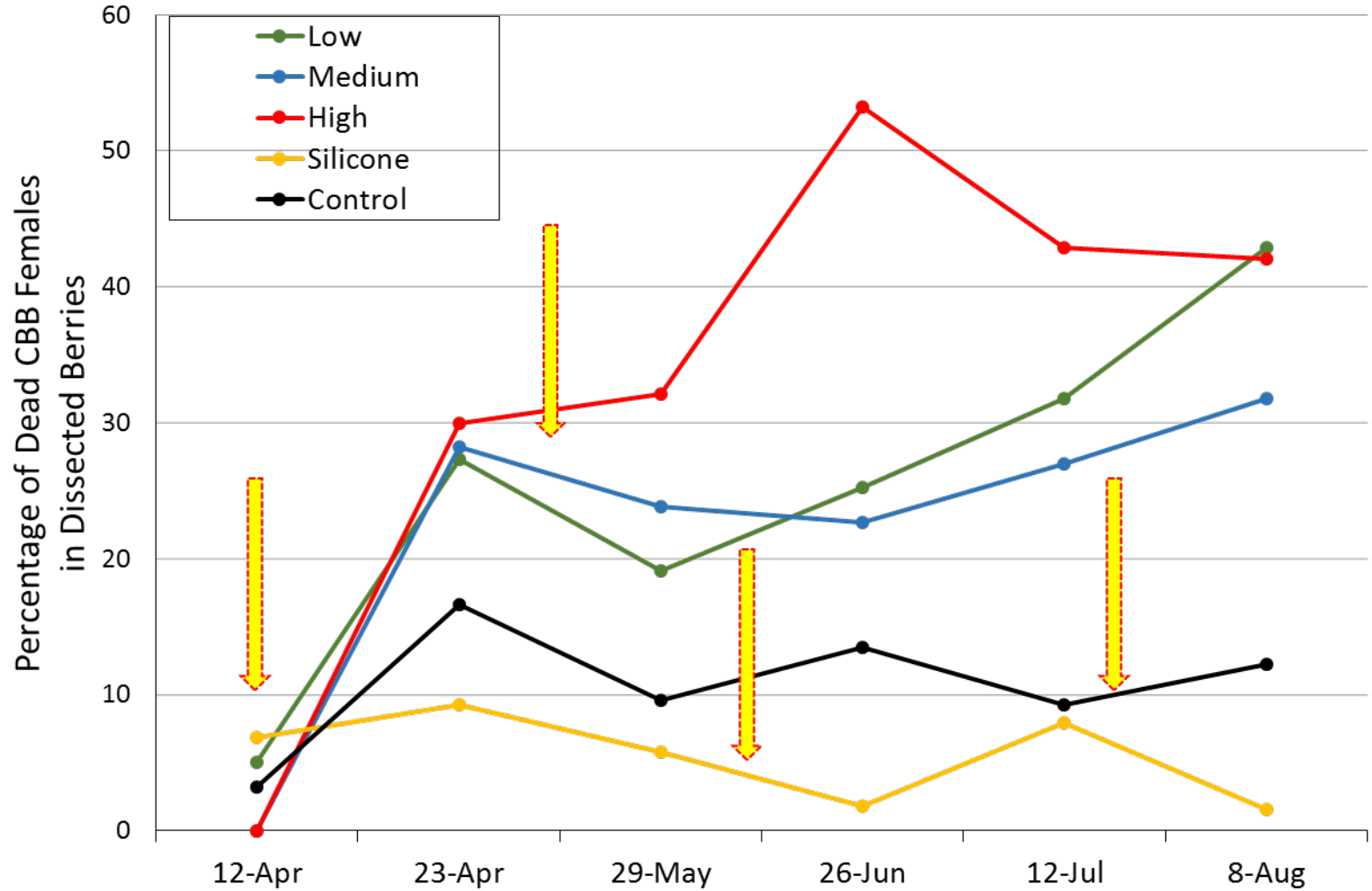
Spraying dates: April 3, May 10, June 4, August 1

Fig. 3.A. Percentage of dead *H. hampei* females after *B. bassiana* applications in Honaunau, 145m



 Spraying dates: April 3, May 10, June 4, August 1

Fig. 3.B. Percentage of dead *H. hampei* females after *B. bassiana* applications in Keauhou, 538 m



➡ Spraying dates: April 12, May 6, June 4, July 19

Fig. 3.C. Percentage of dead *H. hampei* females after *B. bassiana* applications in Captain Cook, 763 m

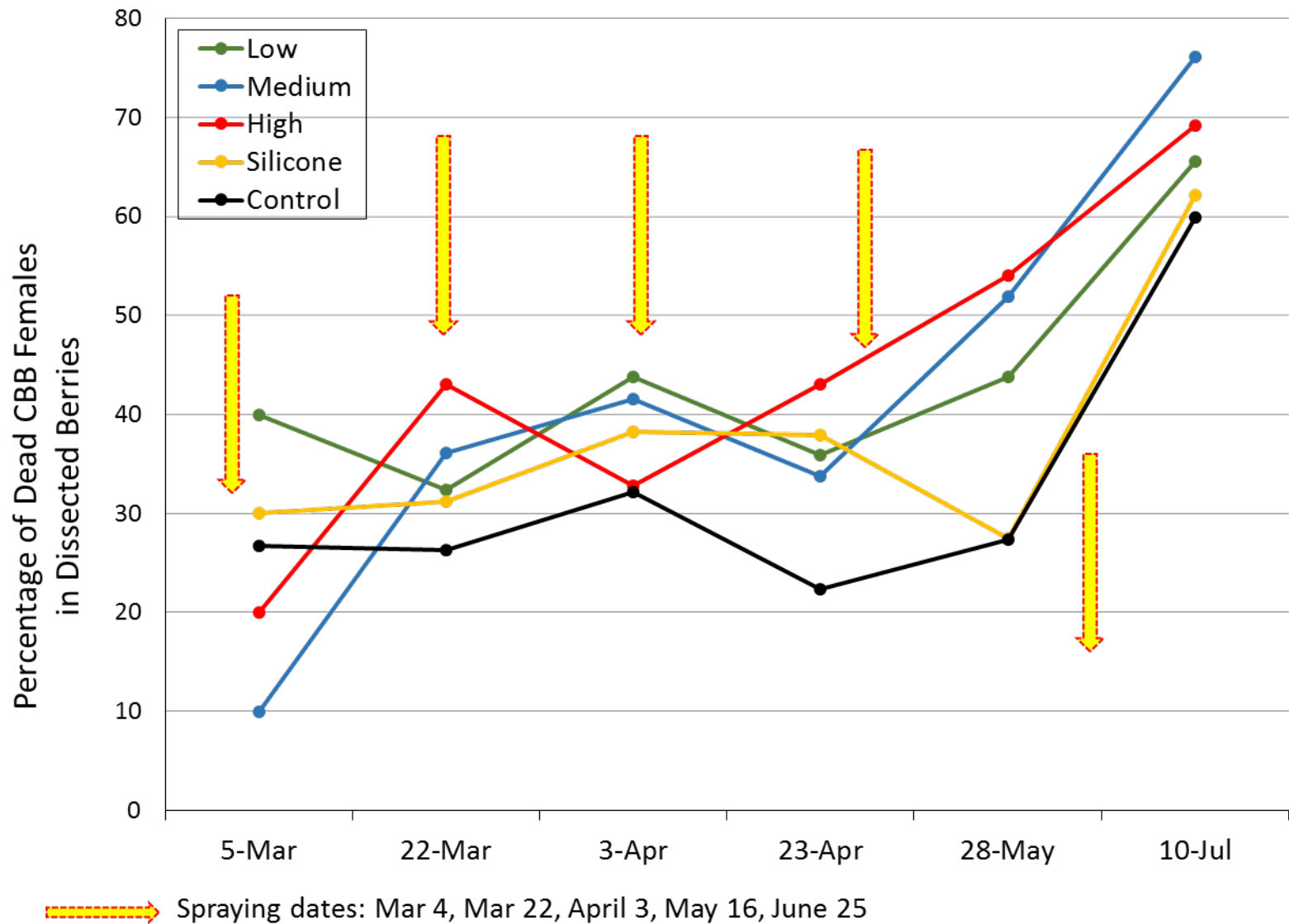


Fig. 4.A. *Hypothenemus hampei* infestation and berries with presence of *B. bassiana* observed in the field after treatment application, and dead females found in dissected berries. Honaunau, 145 m

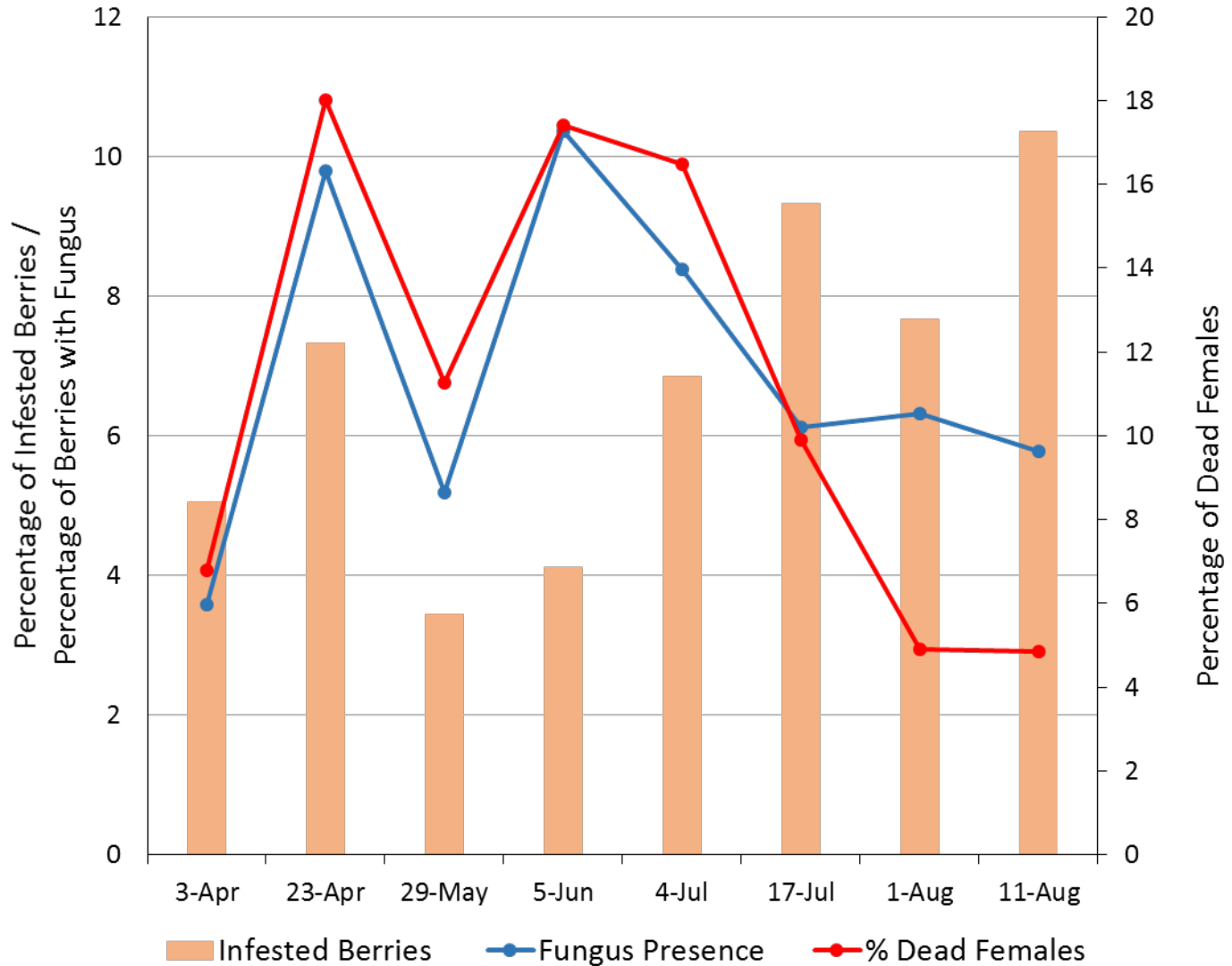


Fig. 4.B. *Hypothenemus hampei* infestation and berries with presence of *B. bassiana* observed in the field after treatment applications, and dead females found in dissected berries. Keauhou, 538 m

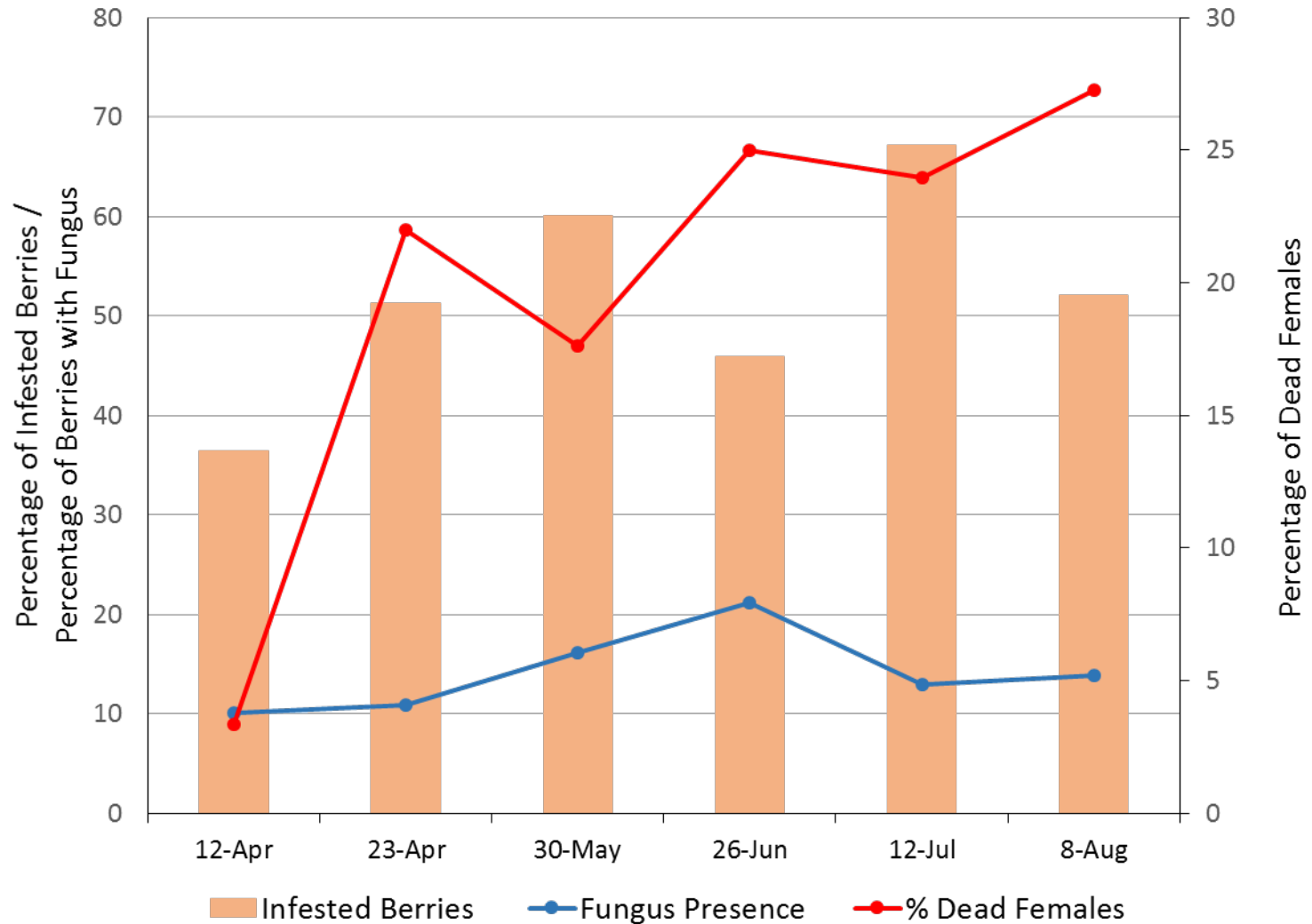


Fig. 4.C. *Hypothenemus hampei* infestation and berries with presence of *B. bassiana* observed in the field after treatment applications, and dead females found in dissected berries. Captain Cook, 763 m

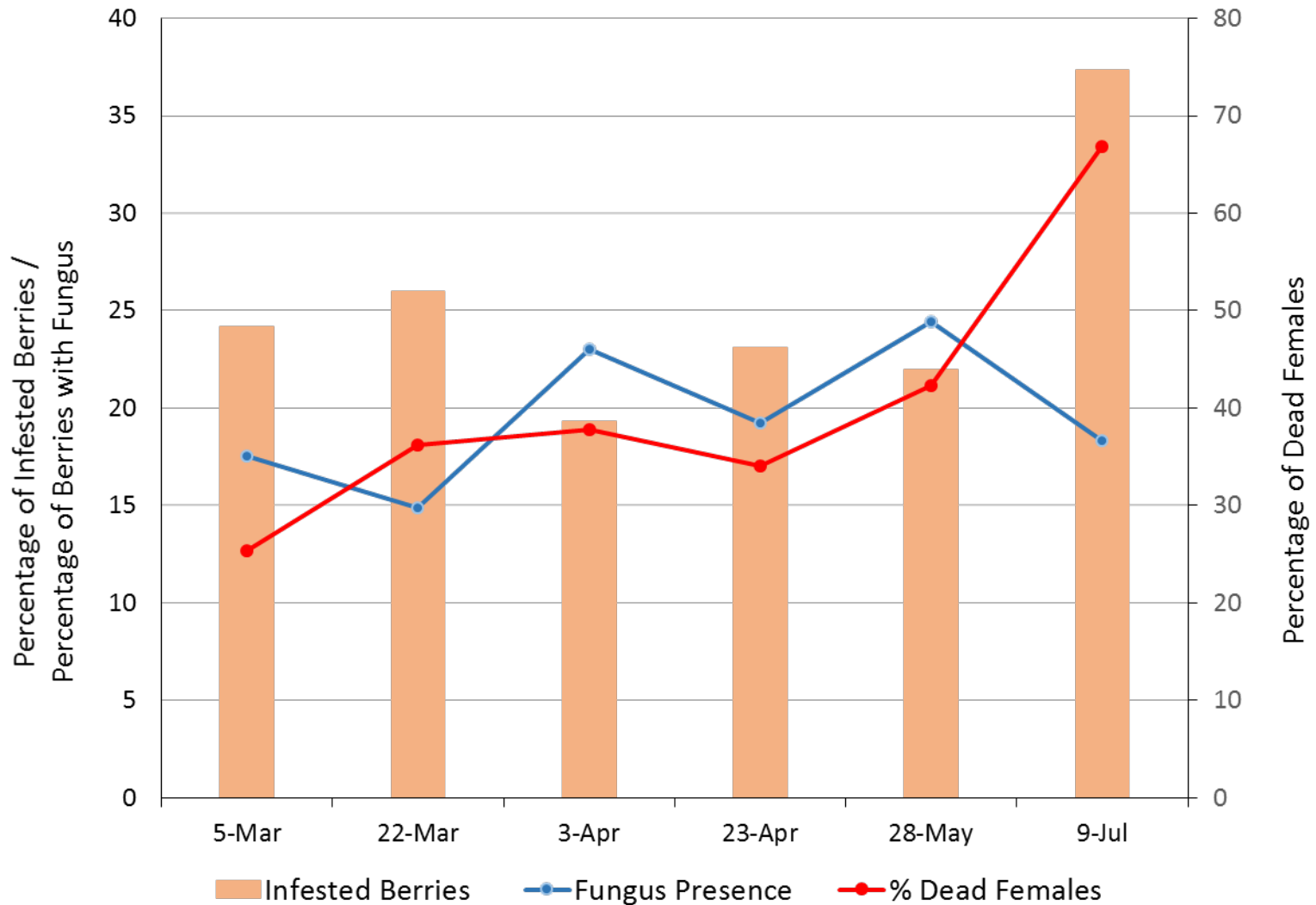
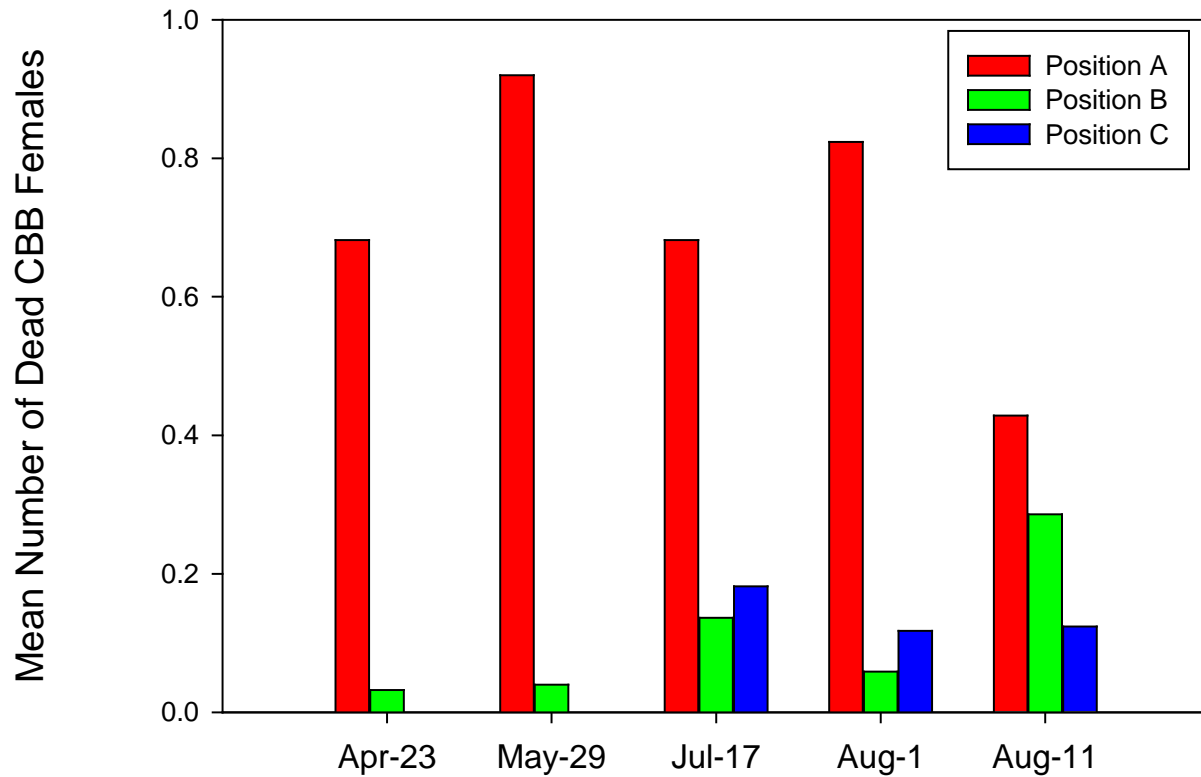


Fig. 5.A. Number of dead *H. hampei* females at different positions inside coffee berries. Honaunau, 145 m



CBB Positions

A



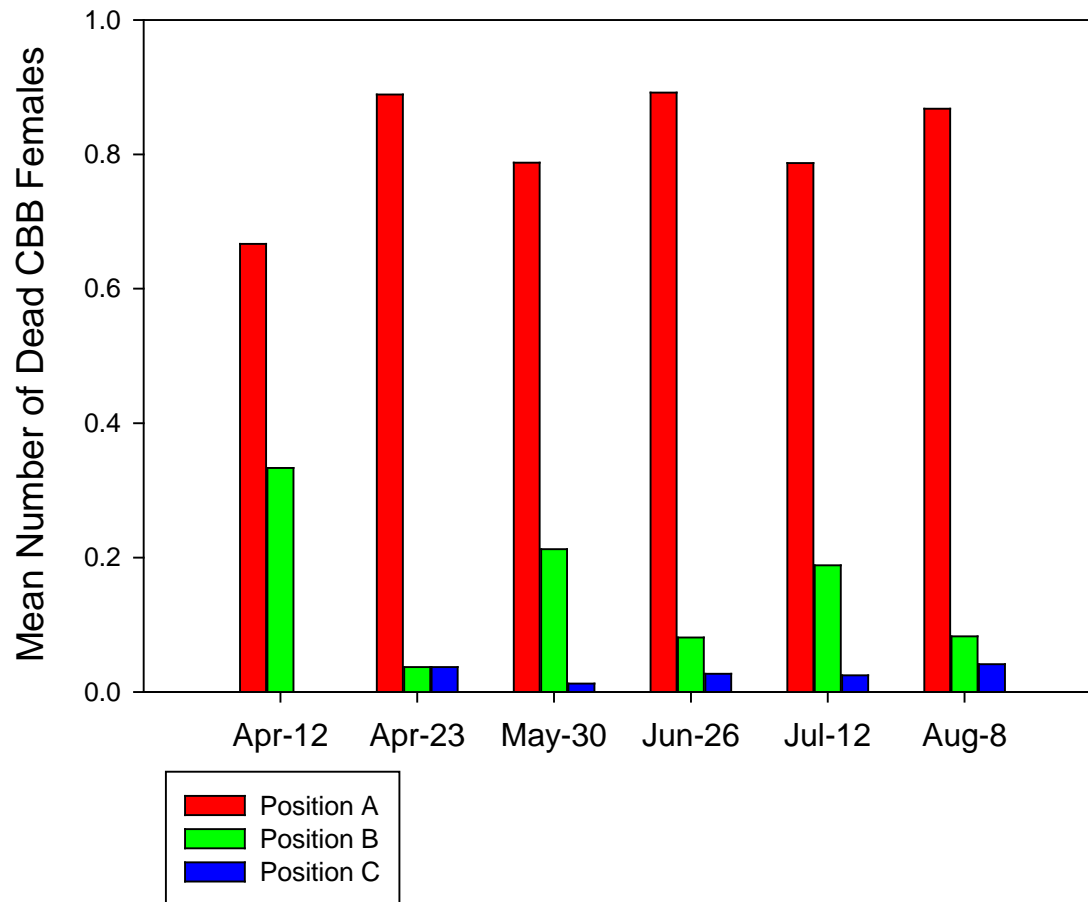
B



C



Fig. 5.B. Number of dead *H. hampei* females at different positions inside coffee berries. Keauhou, 538 m



CBB Positions

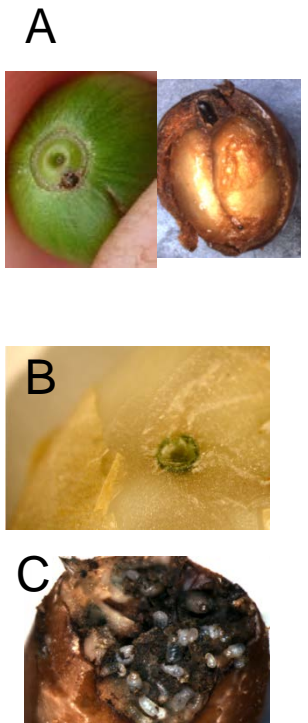
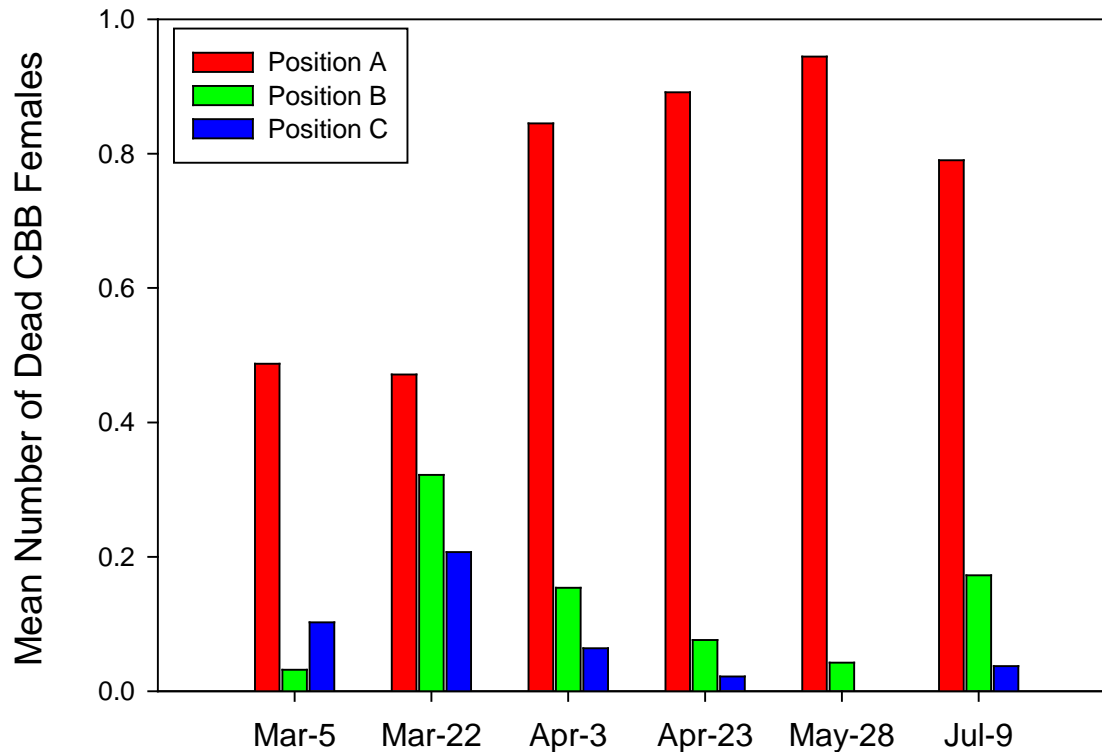


Fig. 5.C. Number of dead *H. hampei* females at different positions inside coffee berries. Captain Cook, 763 m



CBB Positions

A



B



C

