

WELCOME



# Identification, Assessment and Management of Soilborne Plant Pathogens in Vegetable Production Systems

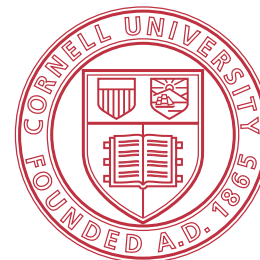
Beth K. Gugino, The Pennsylvania State University

George S. Abawi, NYSAES, Cornell University

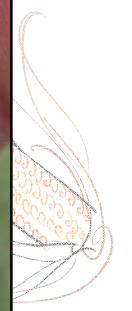
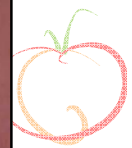
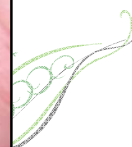
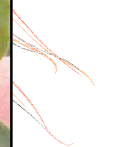
James A. LaMondia, The Connecticut Agricultural Experiment Station



LNE10-296



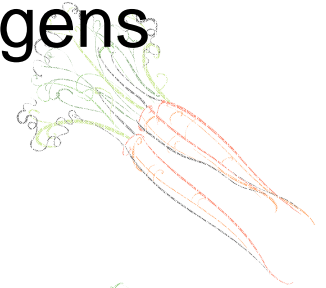
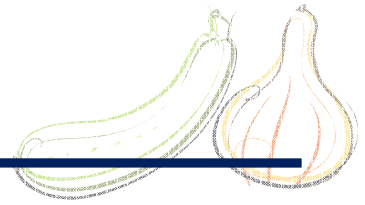
# Soil microbial community



# Workshop goals

---

- ➔ Increase awareness about soilborne plant pathogens
- ➔ Recognize the signs and symptoms of common diseases caused by soilborne pathogens
- ➔ Learn how to scout fields, collect plant and soil samples for assessment and tools used for diagnosing diseases
- ➔ Discuss available management options



# Workshop agenda

---

➔ Introductions and overview

➔ **Biology and ecology** of soilborne organisms

➔ **Signs and symptoms** of soilborne pathogens and diseases common in vegetable production systems (Break)

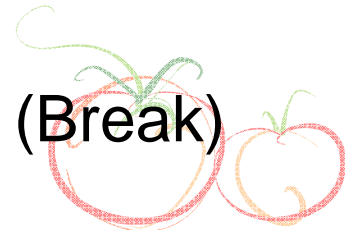
Lunch break

➔ **Sampling and assessing** plants and soils for soilborne pathogens

➔ Soilborne pathogen **management**: Available options (Break)

➔ **Concluding discussion** including experience sharing

➔ Q&A and **project impact assessment**



# Resource binder

- ➔ Cover letter explaining the workshop and larger project
- ➔ Powerpoint presentations
- ➔ Fact sheets
- ➔ Soil sampling and bioassay protocols
- ➔ Soilborne pathogen workshop CD

