

A Clockwork Brown

The Diel Activity of *Halyomorpha halys* in Peaches

John Cambridge



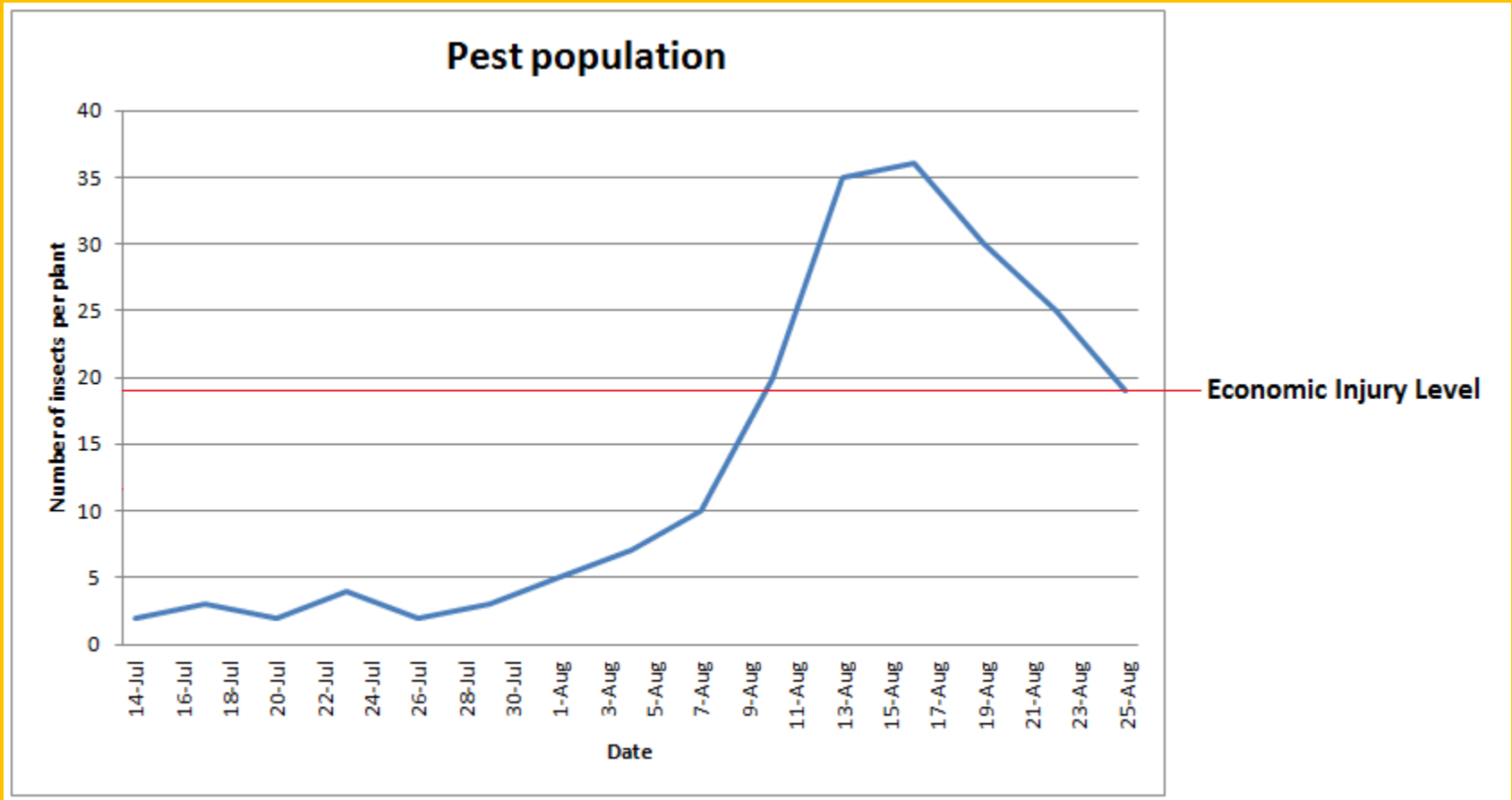
Background

Integrated Pest Management

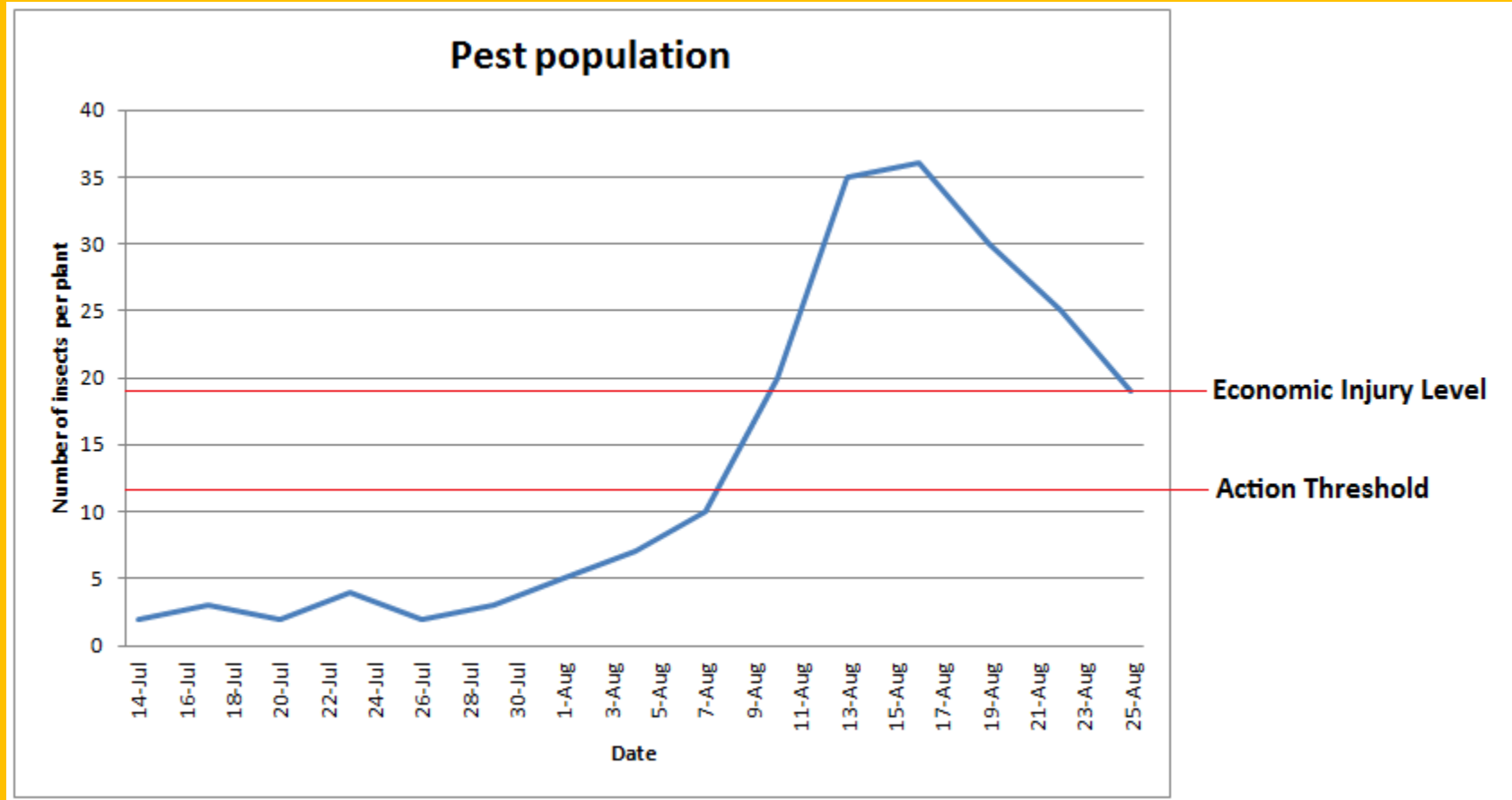
- IPM scouts use population monitoring to determine if treatment is necessary at that time in a particular field/orchard



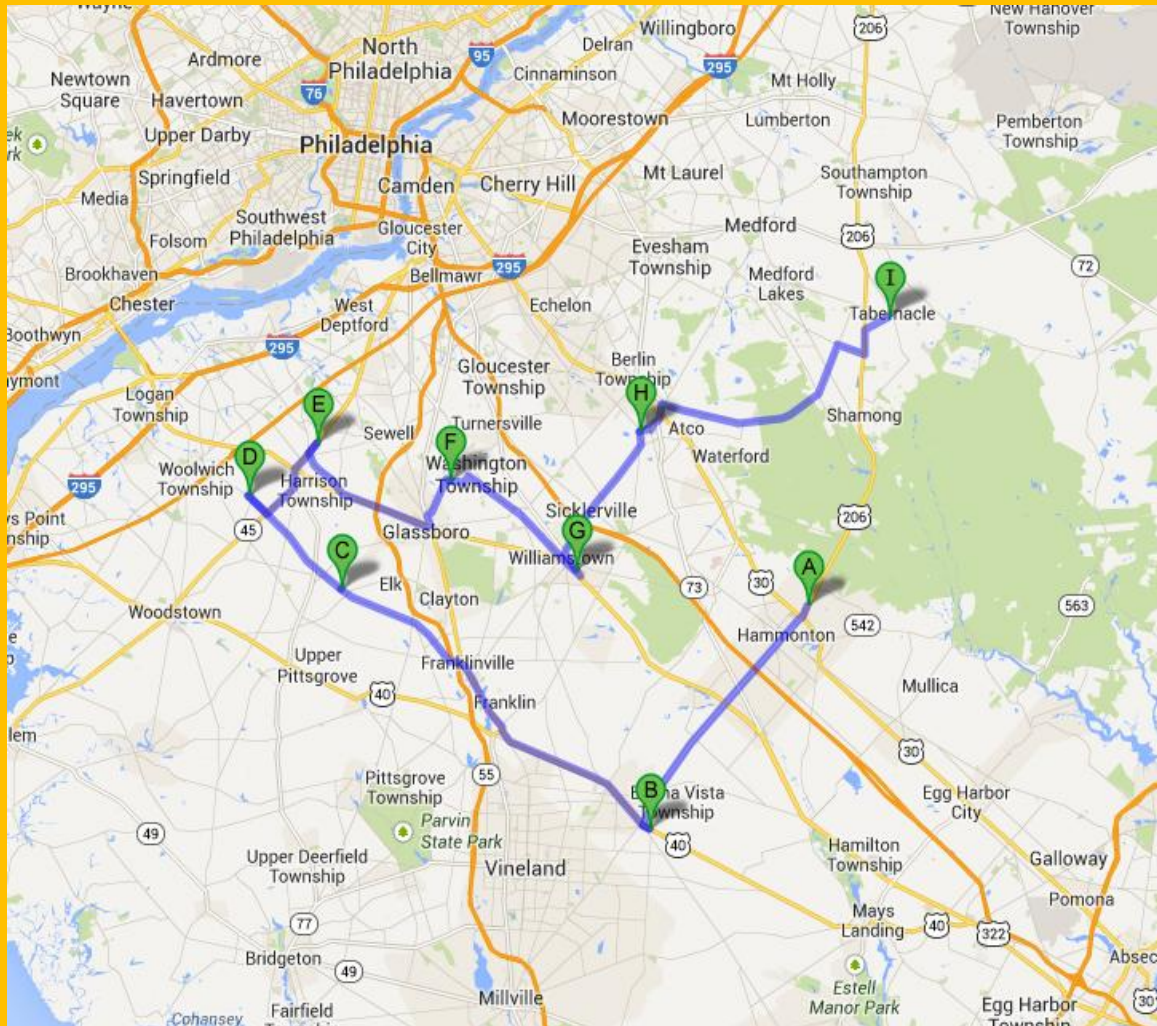
Economic Injury Level (EIL)



Action Threshold



IPM Scouts Route



Purpose

- This study was designed to test whether or not significant differences in observed population levels could be a result of the time of data collection.
- Populations of Brown Marmorated Stink Bug in New Jersey Peaches were chosen as the model system for this study.



Why BMSB?

- Very destructive pest in a wide variety of crops
- Currently, many of the chemical control options are broad-spectrum.
- EIL and action thresholds are still be created.



132 trees were selected at two sites

RAREC



Cream Ridge



The sampling method was 2 minute visual observations on each tree



Color study



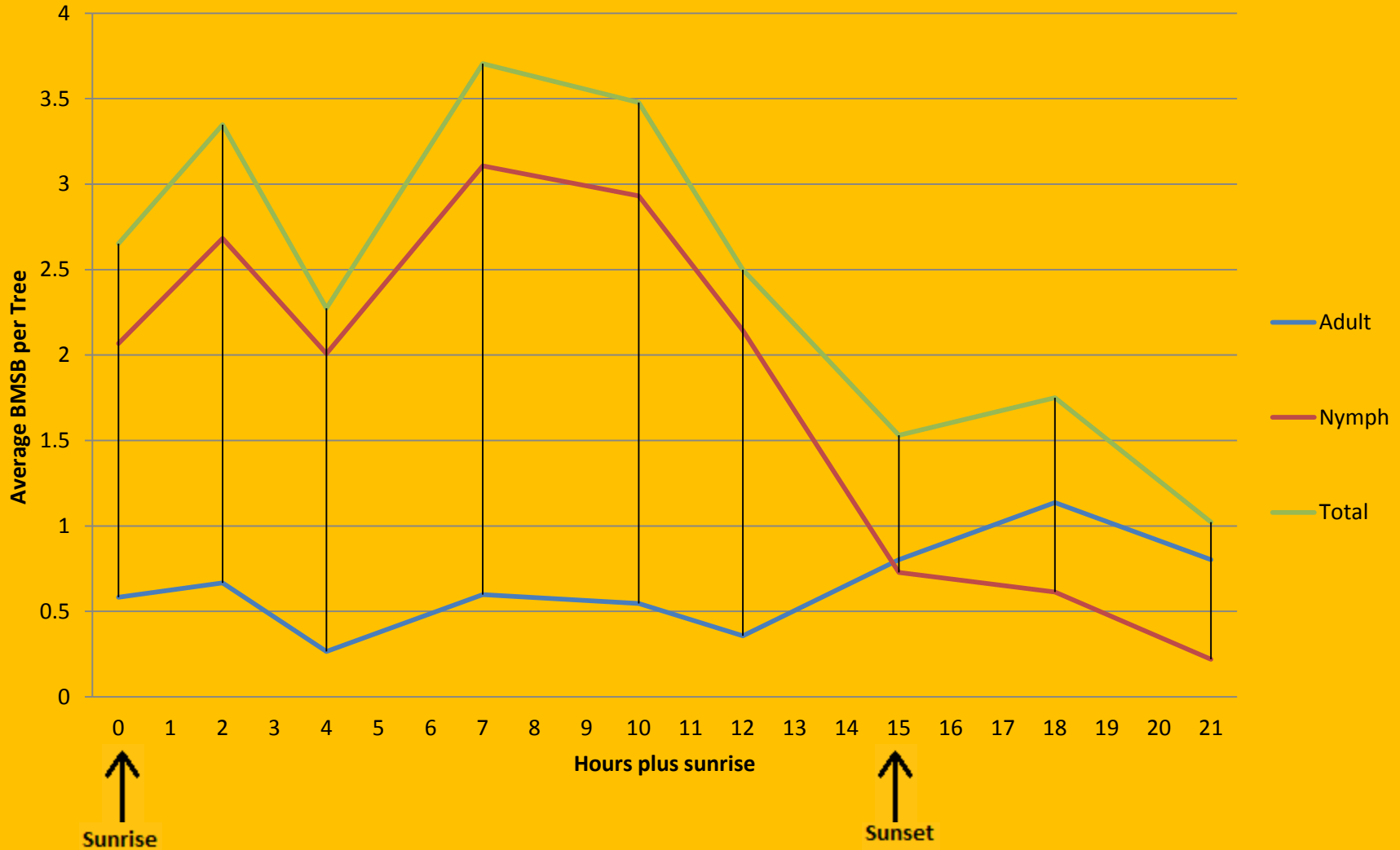
Red light is an inadequate source of illumination at night



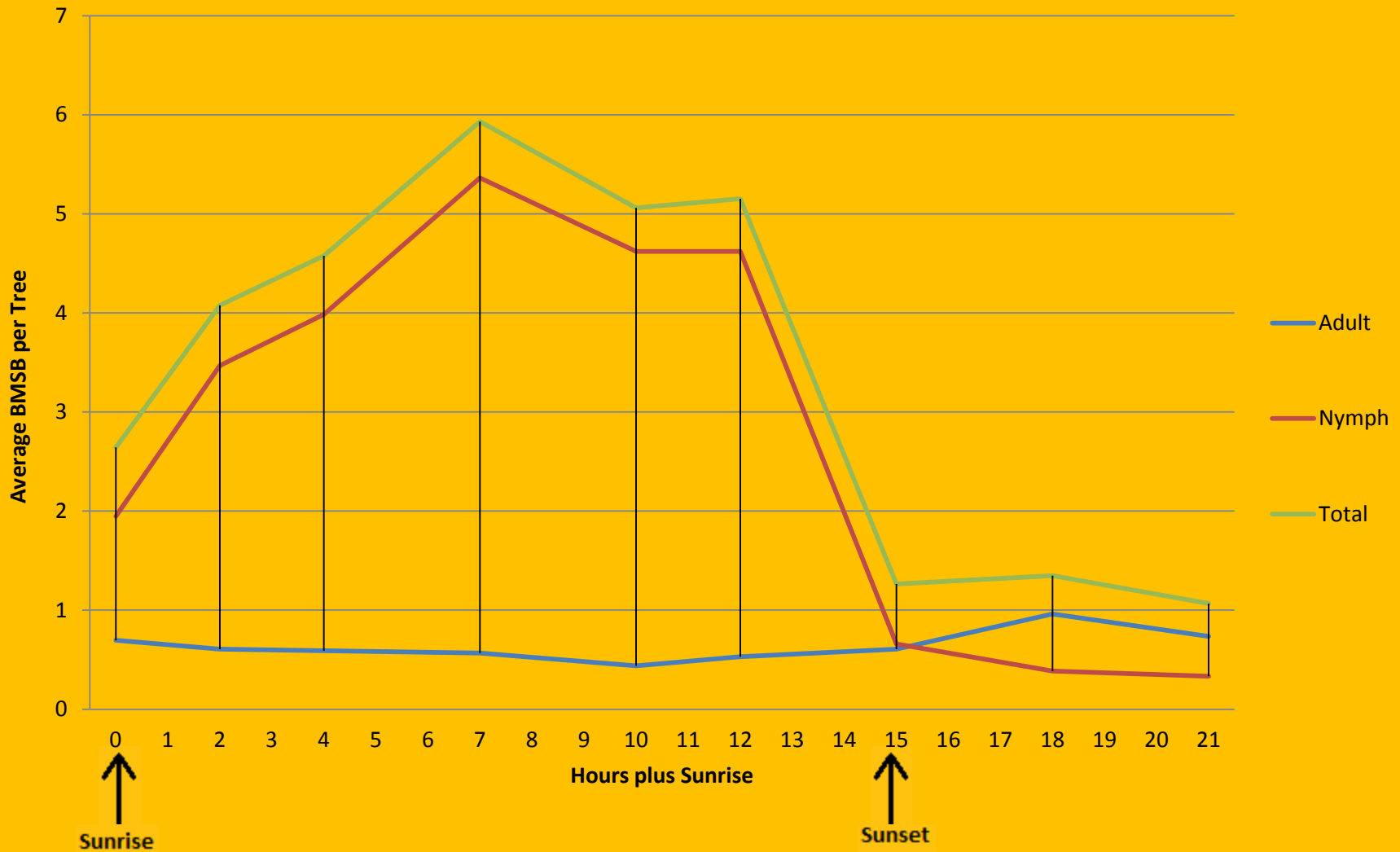
White light works great



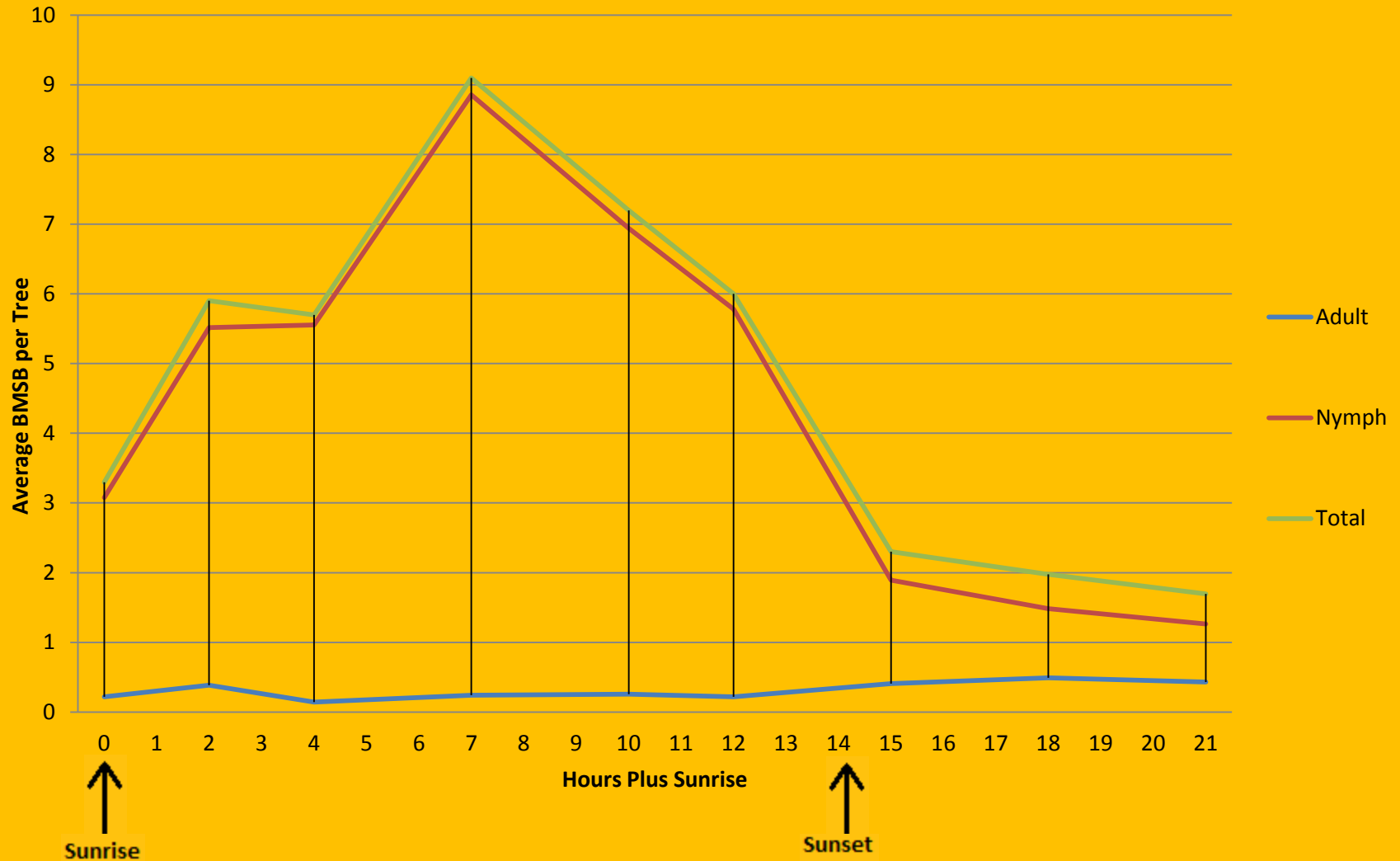
July 11st-July 12nd 2013 RAREC



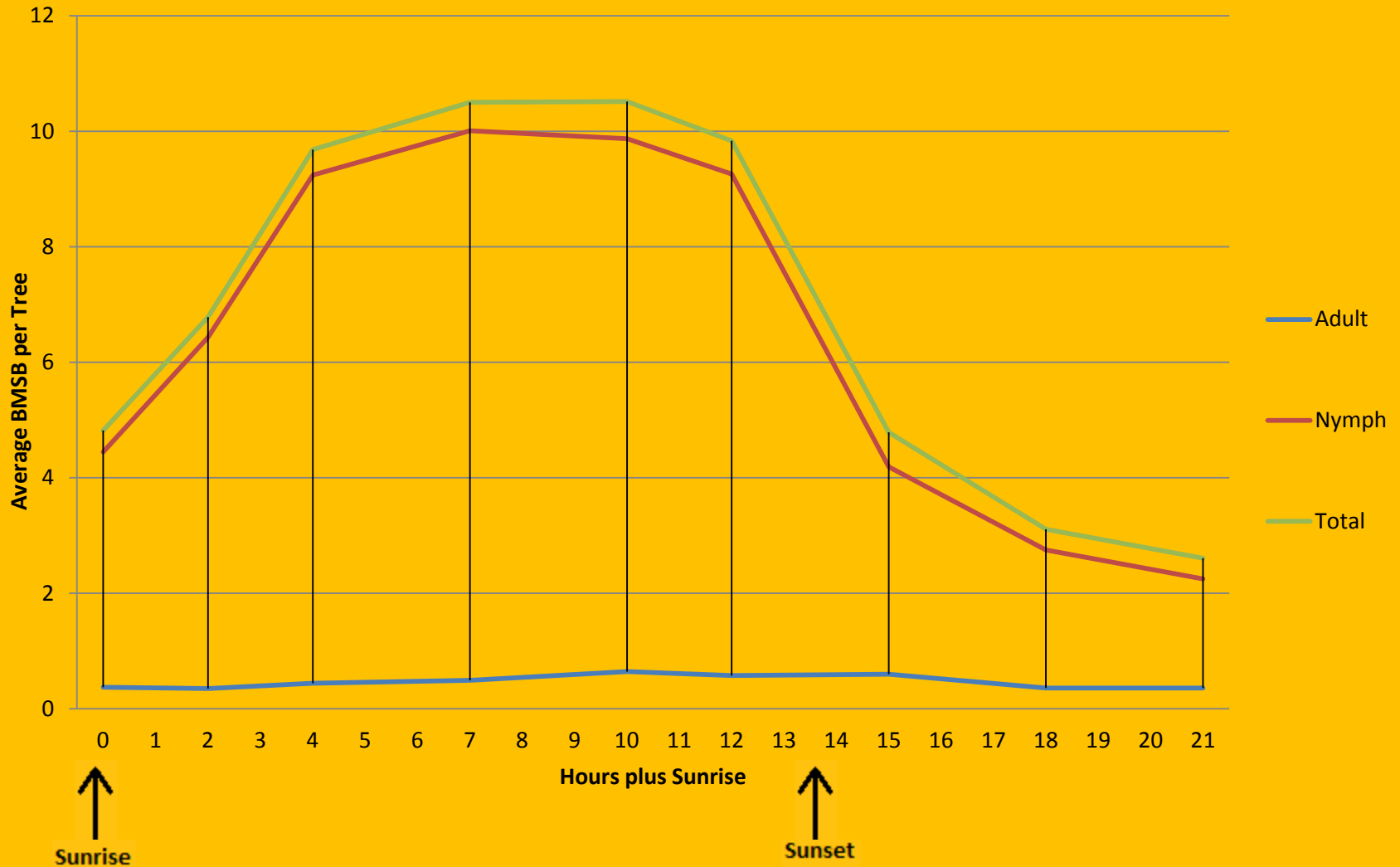
July 21st-July 22nd 2013 RAREC



August 5th-August 6th 2013 RAREC



August 19th-August 20th 2013 RAREC



Stats: Day versus Night

August 11th–12th 2013 RAREC

- Total p= <0.001
- Nymphs p= <0.001
- Adults p= <0.001

July 21st-22nd 2013 RAREC

- Total p= <0.001
- Nymphs p= <0.001
- Adults p= 0.018

August 5th–9th 2013 RAREC

- Total p= <0.001
- Nymphs p= <0.001
- Adults p= <0.001

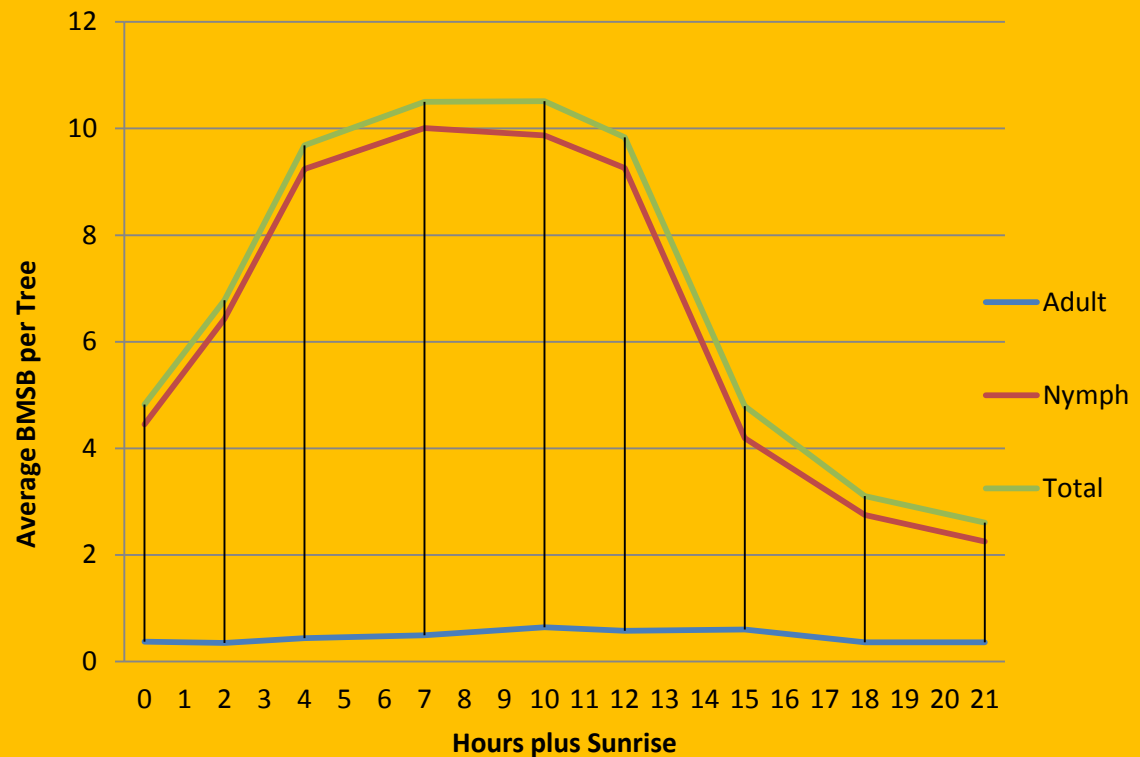
August 19th–20th 2013 RAREC

- Total p= <0.001
- Nymphs p= <0.001
- Adults p= 0.257

Stats: ~8am versus ~1pm

August 19th–20th 2013 RAREC

- Total $p= 0.001$
- Nymphs $p= 0.001$
- Adults $p= 0.112$

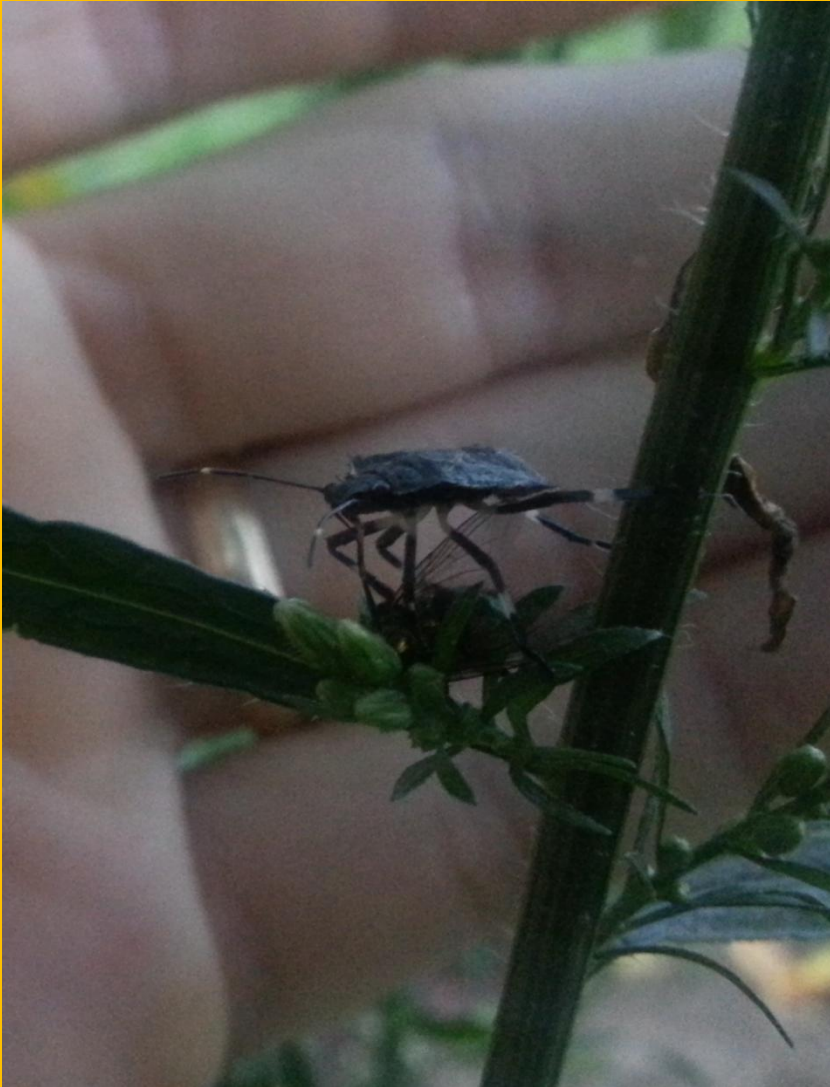


Importance

- Standardization of IPM scouting-setting precedence for scouting other insects
- Optimizing pesticide application



The Near Future



Experiments

- Redo light attraction trials with nymphs
- Continue visual sampling variability trials
- Opportunistically predacious?

References

- Nielsen, A.L., and Hamilton, G.C. 2009. Life history of the invasive species *Halyomorpha halys* (Hemiptera:Pentatomidae) in Northeastern United States. *Ecology and Population Biology* 102(4): 608-616.
- A. L. Nielsen, P. W. Shearer, and G. C. Hamilton, "Toxicity of insecticides to *Halyomorpha halys* (Hemiptera: Pentatomidae) using glass-vial bioassays," *Journal of Economic Entomology*, vol. 101, no. 4, pp. 1439–1442, 2008.
- A. L. Nielsen and G. C. Hamilton, "Seasonal occurrence and impact of *Halyomorpha halys* (Hemiptera: Pentatomidae) in tree fruit," *Journal of Economic Entomology*, vol. 102, no. 3, pp. 1133–1140, 2009.
- Nielsen, A.L., G.C. Hamilton and M. Matadha. 2008. Development Rate Estimation and Life Table Analysis for *Halyomorpha halys* (Stål) (Hemiptera: Pentatomidae). *Environmental Entomology* 37: 348-355.
- Bas, Yves, Vincent Devictor, Jean-Pierre Moussus, and Frederic Jiguet. "Biodiversity Conservation." *Biodiversity Conservation*. 17. (2008): 3403–3416. Print.

Acknowledgments

- Team 'find-the-stinkers'
 - April Heliotis
 - Martha Cambridge
 - Chelcey Nordstrom
 - Cameron Moriarty
- Advisor: Dr. George Hamilton



Questions?

