



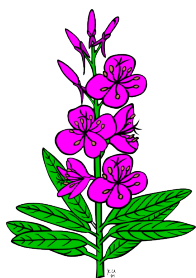
# BEE HABITAT STEWARDSHIP TOOL



Abbott\_Claim: REPORT 2025

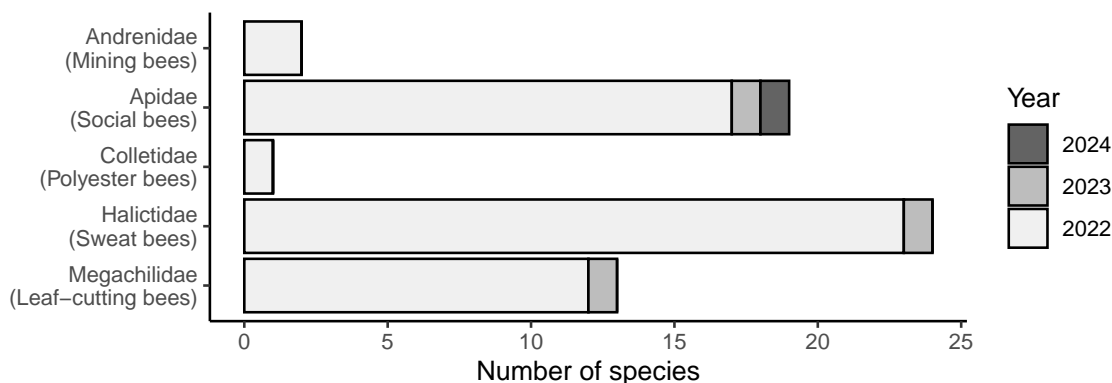
## 1 Highlights bee habitat from your iNaturalist project

Out of the 44 identified plant species from your iNaturalist project, 17 are bee-friendly plants. Of these plants:



- 4 species are *super* bee plants
- 6 species are native plants
- 0 species are general (non-noxious) weeds
- 3 species are noxious weeds

Based on bee-plant records from Oregon Bee Atlas, we predict that you have 59\* species of bees across 5 families. You provided us with multiple years of data, so the improvements in bee habitat from the additional plant species you discovered in each year are shown below.



\*Similar vineyards in Oregon range from 0 - 76 species of bees

## 2 The *super bee plants* on your property

A *super bee plant* attracts a wide diversity of bees, rare specialist bees, and is also not a noxious weed. Some included plants have both native and exotic species. Non-noxious weeds and exotic plants *are* included in this list because they are contributing to your bee diversity, but we recommend that future flower plantings be done using native species.

Super bee plants on your property (in order of importance)<sup>†</sup>:

Table 1: Super bee plant species

| Plant   | Origin | Life cycle | Bloom Time      |
|---|--------|------------|-----------------|
| Ox-Eye Daisy<br>( <i>Leucanthemum vulgare</i> )     | Exotic | Perennial  | May-October     |
| Common Dandelion<br>( <i>Taraxacum officinale</i> ) | Exotic | Perennial  | March-September |
| Farewell To Spring<br>( <i>Clarkia amoena</i> )     | Native | Annual     | May-August      |
| White Clover<br>( <i>Trifolium repens</i> )         | Exotic | Perennial  | April-July      |

Table 2: Super bee plant genera

| Plant                               | Origin | Life cycle           | Bloom Time |
|-------------------------------------|--------|----------------------|------------|
| Phacelia<br>( <i>Phacelia</i> )     | Native | Annual,<br>Perennial | -          |
| Daisy<br>( <i>Bellis</i> )          | Exotic | Perennial            | -          |
| Daisy<br>( <i>Leucanthemum</i> )    | Exotic | Perennial            | -          |
| Vetch<br>( <i>Vicia</i> )           | Native | Perennial            | -          |
| Barberry<br>( <i>Berberis</i> )     | Native | Perennial            | -          |
| Rosemaries<br>( <i>Rosmarinus</i> ) | Exotic | NA                   | -          |

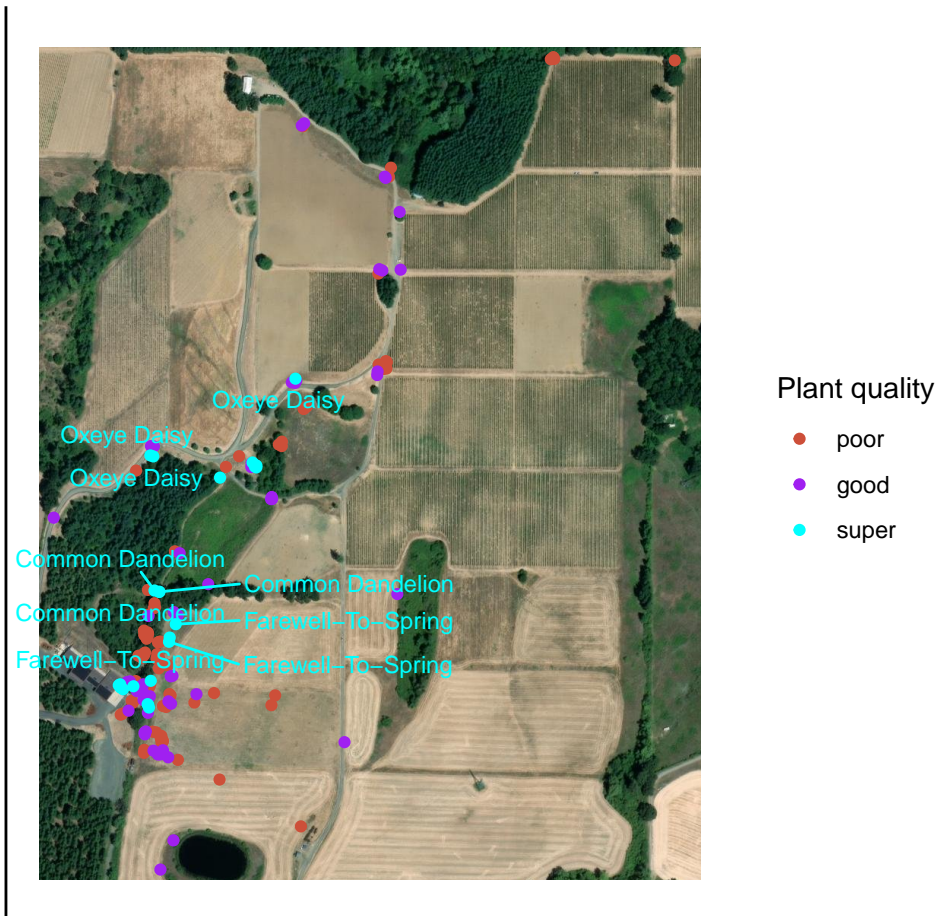
---

<sup>†</sup>The data collected here does not allow for comparisons across properties, but does let you know if your own efforts are improving bee habitat or not.

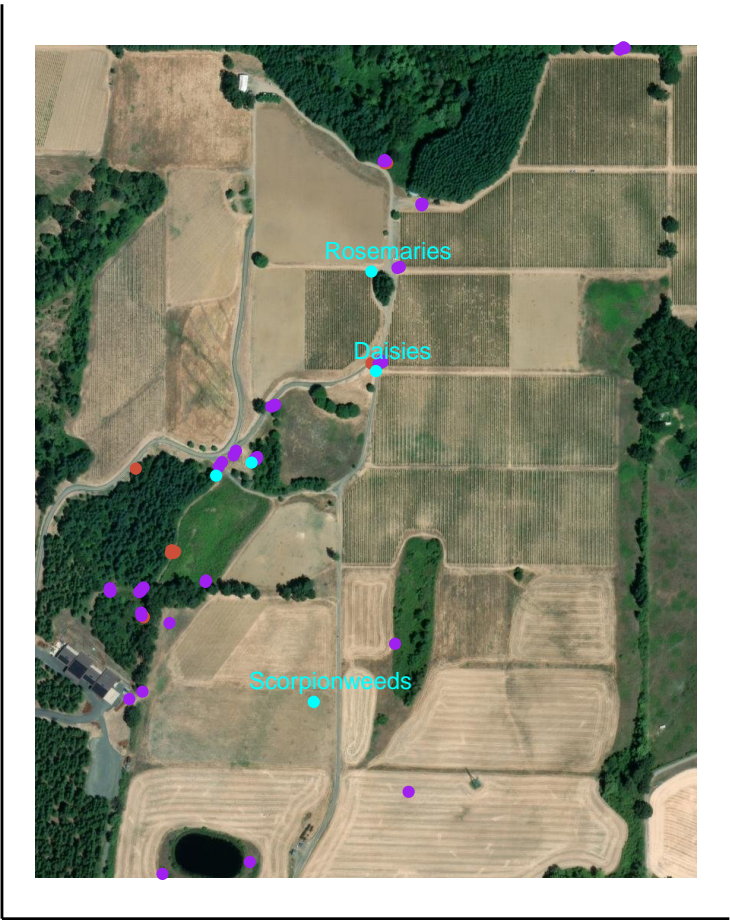
### 3 Where are the *super bee plants* located?

Bee plants are often located in overlooked areas. While some plants are in your cultivated landscaped areas, often they are found growing wild in your headlands. Consider increasing the number of plants in these areas through seeding or cuttings, or by managing weeds and grasses.

#### Species-level IDs



Genus-level IDs



Plant quality

- poor
- good
- super

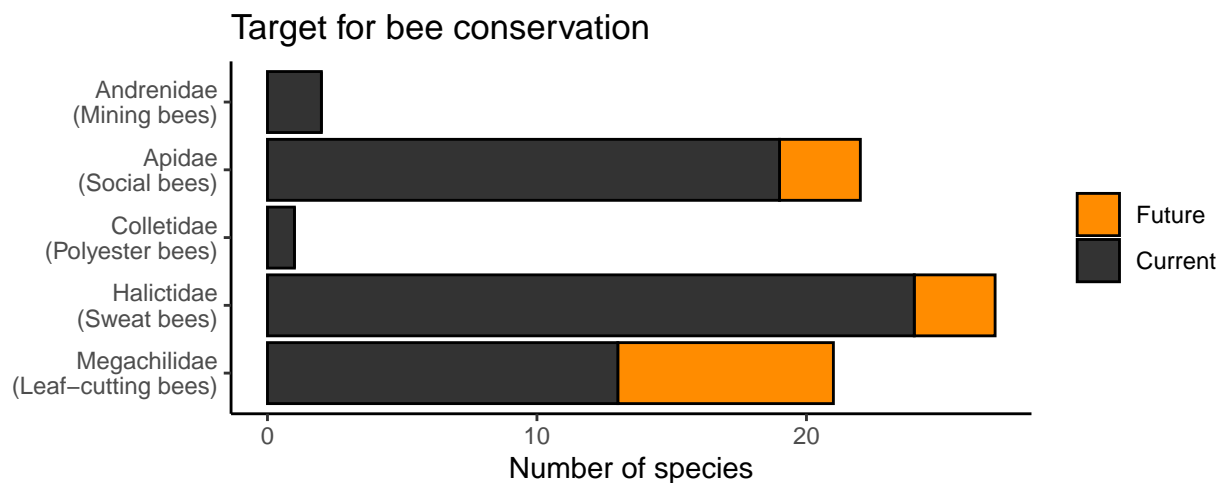
# 4 What do we recommend?

## 4.1 Suggested native plants

There are a few native bee plants from the Willamette Valley region you are currently missing. Adding these species of plants will increase the estimated number of bees at your property from 59 to 73 species of bees:

| Plant Species  | Origin | Lifecycle | Bloom Period   | Planting Type |      |          |      |             |         |
|--|--------|-----------|----------------|---------------|------|----------|------|-------------|---------|
|  |        |           |                | Landscape     | Edge | Riparian | Open | OakWoodland | Wetland |
| Denseflower Spike Primrose<br>( <i>Epilobium densiflorum</i> ) | Native | Annual    | June-September |               |      | X        | X    |             | X       |
| Rosy Plectritis<br>( <i>Plectritis congesta</i> )              | Native | Annual    | April-July     |               | X    |          | X    | X           |         |
| Kincaid's Lupine<br>( <i>Lupinus oreganus</i> )                | Native | Perennial | May-June       |               | X    | X        | X    | X           | X       |
| Elegant Brodiaea<br>( <i>Brodiaea elegans</i> )                | Native | Perennial | May-July       | X             |      |          | X    | X           |         |
| Oregon Geranium<br>( <i>Geranium oreganum</i> )                | Native | Perennial | May-July       | X             | X    |          | X    | X           |         |
| Nelson's Checkermallow<br>( <i>Sidalcea nelsoniana</i> )       | Native | Perennial | May-August     | X             | X    | X        | X    | X           | X       |
| Common Self-Heal<br>( <i>Prunella vulgaris</i> )               | Native | Perennial | May-September  | X             | X    | X        | X    | X           | X       |

For a full list of native plants, see Appendix 3.



## 4.2 Note on implementation

**Soil and Water Conservation Districts (SWCD)** offer free technical assistance and site visits to County residents interested in implementing conservation projects on their land. They can help develop a pollinator planting plan that is specific to your site and operation. In addition to pollinator plantings, landowners with streams and riparian areas may be eligible to enroll in a financial assistance program, the **Conservation Reserve Enhancement Program (CREP)**, to establish native trees and shrubs along creeks. Reach out to your SWCD with this report to help you move forward with restoration plans.

## 5 Discoveries from your iNaturalist project

Your property had the following plant species, which is visited by the following unique unique bee:

| Partner | Species Name  | Description   |
|---------|---|---|
| Plant   | <b>Tall Oregon-Grape</b><br>( <i>Berberis aquifolium</i> )      | The state flower of Oregon, many will know Oregon grape by its former genus name, Mahonia. It provides yellow blooms, a holly-like evergreen cover, and fall color. It's pretty blue fruit is valuable for wildlife and a variety of human uses including jellies, wine, and dye. This evergreen shrub has adaptable light and drought tolerance but prefers partial shade and acidic, low-nutrient, well-drained soil. |
| Bee     | <b>Kincaid's Sweat Bee</b><br>( <i>Lasioglossum kincaidii</i> ) | Kincaid's sweat bees are small, shiny, black bees with short, thin white hairs on their face and legs. They have a large thorax and look mostly all-black, but their abdomen has faint, pale hair bands. Female Kincaid's sweat bees have special hairs on their hind legs called scopa, which they use to collect and carry pollen. These bees are solitary and make their nests in flat, sandy soil.                  |

# Appendix 1: Predicted bees from your property

| Family                             | Bee Species  |
|------------------------------------|--|
| Andrenidae ( <b>2 species</b> )    | <i>Andrena prunorum</i> , <i>Andrena rubicundus</i>  |
| Apidae ( <b>19 species</b> )       | <i>Apis mellifera</i> , <i>Bombus appositus</i> , <i>Bombus caliginosus</i> , <i>Bombus fervidus</i> , <i>Bombus flavifrons</i> , <i>Bombus griseocollis</i> , <i>Bombus melanopygus</i> , <i>Bombus mixtus</i> , <i>Bombus nevadensis</i> , <i>Bombus vosnesenskii</i> , <i>Ceratina acantha</i> , <i>Ceratina micheneri</i> , <i>Eucera cordleyi</i> , <i>Eucera edwardsii</i> , <i>Eucera frater</i> , <i>Eucera lunata</i> , <i>Eucera virgata</i> , <i>Habropoda cineraria</i> , <i>Melissodes lupinus</i>  |
| Colletidae ( <b>1 species</b> )    | <i>Hylaeus mesillae</i>  |
| Halictidae ( <b>24 species</b> )   | <i>Agapostemon texanus</i> , <i>Agapostemon virescens</i> , <i>Halictus confusus</i> , <i>Halictus farinosus</i> , <i>Halictus ligatus</i> , <i>Halictus rubicundus</i> , <i>Halictus tripartitus</i> , <i>Lasioglossum albipenne</i> , <i>Lasioglossum argemonis</i> , <i>Lasioglossum avalonense</i> , <i>Lasioglossum cooleyi</i> , <i>Lasioglossum cressonii</i> , <i>Lasioglossum incompletum</i> , <i>Lasioglossum inconditum</i> , <i>Lasioglossum kincaidii</i> , <i>Lasioglossum occultum</i> , <i>Lasioglossum olympiae</i> , <i>Lasioglossum pacificum</i> , <i>Lasioglossum ruidosense</i> , <i>Lasioglossum sisymbrii</i> , <i>Lasioglossum synthyridis</i> , <i>Lasioglossum titusi</i> , <i>Lasioglossum villosulum</i> , <i>Lasioglossum zonulum</i> |
| Megachilidae ( <b>13 species</b> ) | <i>Anthidium manicatum</i> , <i>Megachile angelarum</i> , <i>Megachile brevis</i> , <i>Megachile gravita</i> , <i>Megachile montivaga</i> , <i>Osmia cyanella</i> , <i>Osmia kincaidii</i> , <i>Osmia lignaria</i> , <i>Osmia nemoris</i> , <i>Osmia phaceliae</i> , <i>Osmia pusilla</i> , <i>Osmia sericea</i> , <i>Protosmia rubifloris</i>   |



## Appendix 2: Full super-bee plant list

Table 4: Super bee plant species (may include exotic or non-noxious weedy species)

| Plant   | Origin | Life cycle | Bloom Time      | Bee Species | Rare Bees |
|---|--------|------------|-----------------|-------------|-----------|
| Ox-Eye Daisy<br>( <i>Leucanthemum vulgare</i> )     | Exotic | Perennial  | May-October     | 39          | 1         |
| Common Dandelion<br>( <i>Taraxacum officinale</i> ) | Exotic | Perennial  | March-September | 11          | 1         |
| Farewell To Spring<br>( <i>Clarkia amoena</i> )     | Native | Annual     | May-August      | 14          | 2         |
| White Clover<br>( <i>Trifolium repens</i> )         | Exotic | Perennial  | April-July      | 6           | 1         |

Table 5: Super bee plant genera (may include exotic or non-noxious weedy species)

| Plant                            | Origin | Life cycle           | Bloom Time | Bee Species | Rare Bees |
|----------------------------------|--------|----------------------|------------|-------------|-----------|
| Phacelia<br>( <i>Phacelia</i> )  | Native | Annual,<br>Perennial | -          | 16          | 2         |
| Daisy<br>( <i>Bellis</i> )       | Exotic | Perennial            | -          | 34          | 1         |
| Daisy<br>( <i>Leucanthemum</i> ) | Exotic | Perennial            | -          | 58          | 1         |

|                                     |        |           |   |    |   |
|-------------------------------------|--------|-----------|---|----|---|
| Vetch<br>( <i>Vicia</i> )           | Native | Perennial | - | 25 | 3 |
| Barberry<br>( <i>Berberis</i> )     | Native | Perennial | - | 14 | 3 |
| Rosemaries<br>( <i>Rosmarinus</i> ) | Exotic | NA        | - | 9  | 1 |

## Appendix 3: Recommended plants

Note: plants are shown in order of pollinator ranking (most-valuable to least-valuable)

| Plant Species                                       | Origin | Lifecycle | Bloom Period  | Planting Type |      |          |      |             |         | New Bee Species  |
|---|--------|-----------|---------------|---------------|------|----------|------|-------------|---------|--|
|   |        |           |               | Landscape     | Edge | Riparian | Open | OakWoodland | Wetland |  |
| Riverbank Lupine<br>( <i>Lupinus rivularis</i> )    | Native | Perennial | March-August  |               | X    | X        | X    |             |         | <i>Lasioglossum buccale</i> ,<br><i>Osmia atrocyanea</i> ,<br><i>Osmia cyanella</i> ,<br><i>Osmia exigua</i> |
| Common Snowberry<br>( <i>Symphoricarpos albus</i> ) | Native | Perennial | May-August    | X             | X    | X        |      | X           | X       | <i>Bombus flavifrons</i> ,<br><i>Stelis laticincta</i> , <i>Stelis montana</i>                               |
| Trailing Blackberry<br>( <i>Rubus ursinus</i> )     | Native | Perennial | April-August  | X             | X    |          | X    | X           |         | <i>Bombus flavifrons</i> ,<br><i>Lasioglossum inconditum</i> , <i>Osmia pusilla</i>                          |
| Blanket Flower<br>( <i>Gaillardia aristata</i> )    | Native | Perennial | May-September | X             | X    |          | X    | X           |         | <i>Lasioglossum helianthi</i> ,<br><i>Megachile perihirta</i>  |

(continued)

| Plant Species  | Origin | Lifecycle | Bloom Period    | Landscape | Edge | Riparian | Open | OakWoodland | Wetland | New Bee Species   |
|--|--------|-----------|-----------------|-----------|------|----------|------|-------------|---------|---|
| Common Sneezeweed<br>( <i>Helenium autumnale</i> )   | Native | Perennial | July-October    |           | X    | X        | X    |             | X       | <i>Megachile fidelis</i> ,<br><i>Melissodes robustior</i>         |
| Pacific Ninebark<br>( <i>Physocarpus capitatus</i> ) | Native | Perennial | May-August      | X         | X    | X        |      |             |         | <i>Andrena prunorum</i> ,<br><i>Osmia pusilla</i>                 |
| Blue Blossom<br>( <i>Ceanothus thyrsiflorus</i> )    | Native | Perennial | April-June      | X         | X    |          | X    |             |         | <i>Bombus sitkensis</i> ,<br><i>Heriades carinata</i>             |
| Willamette Fleabane<br>( <i>Erigeron decumbens</i> ) | Native | Perennial | May-July        |           |      |          | X    | X           | X       | <i>Lasioglossum helianthi</i> ,<br><i>Melissodes microstictus</i> |
| Woolly Sunflower<br>( <i>Eriophyllum lanatum</i> )   | Native | Perennial | April-September | X         | X    |          | X    |             |         | <i>Colletes kincaidii</i>   |
| Common Cow Parsnip<br>( <i>Heracleum maximum</i> )   | Native | Perennial | April-August    |           | X    | X        | X    |             | X       | <i>Lasioglossum helianthi</i>                                     |

(continued)

| Plant Species  | Origin | Lifecycle | Bloom Period | Landscape | Edge | Riparian | Open | OakWoodland | Wetland | New Bee Species            |
|--|--------|-----------|--------------|-----------|------|----------|------|-------------|---------|----------------------------|
| Thimbleberry<br>( <i>Rubus parviflorus</i> )                 | Native | Perennial | April-August |           | X    | X        | X    | X           | X       | <i>Andrena prunorum</i>    |
| Meadow Checkermallow<br>( <i>Sidalcea campestris</i> )       | Native | Perennial | May-July     | X         | X    |          | X    |             |         | <i>Anthophora urbana</i>   |
| Oceanspray<br>( <i>Holodiscus discolor</i> )                 | Native | Perennial | May-August   | X         | X    |          | X    | X           |         | <i>Andrena prunorum</i>    |
| Lewis' Mock Orange<br>( <i>Philadelphus lewisii</i> )        | Native | Perennial | May-July     | X         | X    |          | X    |             |         | <i>Andrena prunorum</i>    |
| Showy Milkweed<br>( <i>Asclepias speciosa</i> )              | Native | Perennial | June-August  | X         |      |          | X    |             | X       | <i>Bombus griseocollis</i> |
| Pacific Rhododendron<br>( <i>Rhododendron macrophyllum</i> ) | Native | Perennial | April-August | X         | X    |          |      |             |         | <i>Bombus griseocollis</i> |

(continued)

| Plant Species  | Origin | Lifecycle | Bloom Period  | Landscape | Edge | Riparian | Open | OakWoodland | Wetland | New Bee Species               |
|--|--------|-----------|---------------|-----------|------|----------|------|-------------|---------|-------------------------------|
| Common Self-Heal<br>( <i>Prunella vulgaris</i> )         | Native | Perennial | May-September | X         | X    | X        | X    | X           | X       | <i>Bombus flavifrons</i>      |
| Nelson's Checkermallow<br>( <i>Sidalcea nelsoniana</i> ) | Native | Perennial | May-August    | X         | X    | X        | X    | X           | X       | <i>Bombus flavifrons</i>      |
| Oregon Geranium<br>( <i>Geranium oreganum</i> )          | Native | Perennial | May-July      | X         | X    |          | X    | X           |         | <i>Osmia cyanella</i>         |
| Elegant Brodiaea<br>( <i>Brodiaea elegans</i> )          | Native | Perennial | May-July      | X         |      |          | X    | X           |         | <i>Lasioglossum helianthi</i> |
| Kincaid's Lupine<br>( <i>Lupinus oreganus</i> )          | Native | Perennial | May-June      |           | X    | X        | X    | X           | X       | <i>Eucera frater</i>          |
| Rosy Plectritis<br>( <i>Plectritis congesta</i> )        | Native | Annual    | April-July    |           | X    |          | X    | X           |         | <i>Ceratina nanula</i>        |

(continued)

| Plant Species   | Origin | Lifecycle | Bloom<br>Period    | Landscape | Edge | Riparian | Open | OakWoodland | Wetland | New Bee Species            |
|---|--------|-----------|--------------------|-----------|------|----------|------|-------------|---------|----------------------------|
| Denseflower Spike<br>Primrose<br>( <i>Epilobium<br/>densiflorum</i> ) | Native | Annual    | June-<br>September |           |      | X        | X    |             | X       | <i>Megachile rotundata</i> |