

Pearling Machine Plans

BASE ASSEMBLY

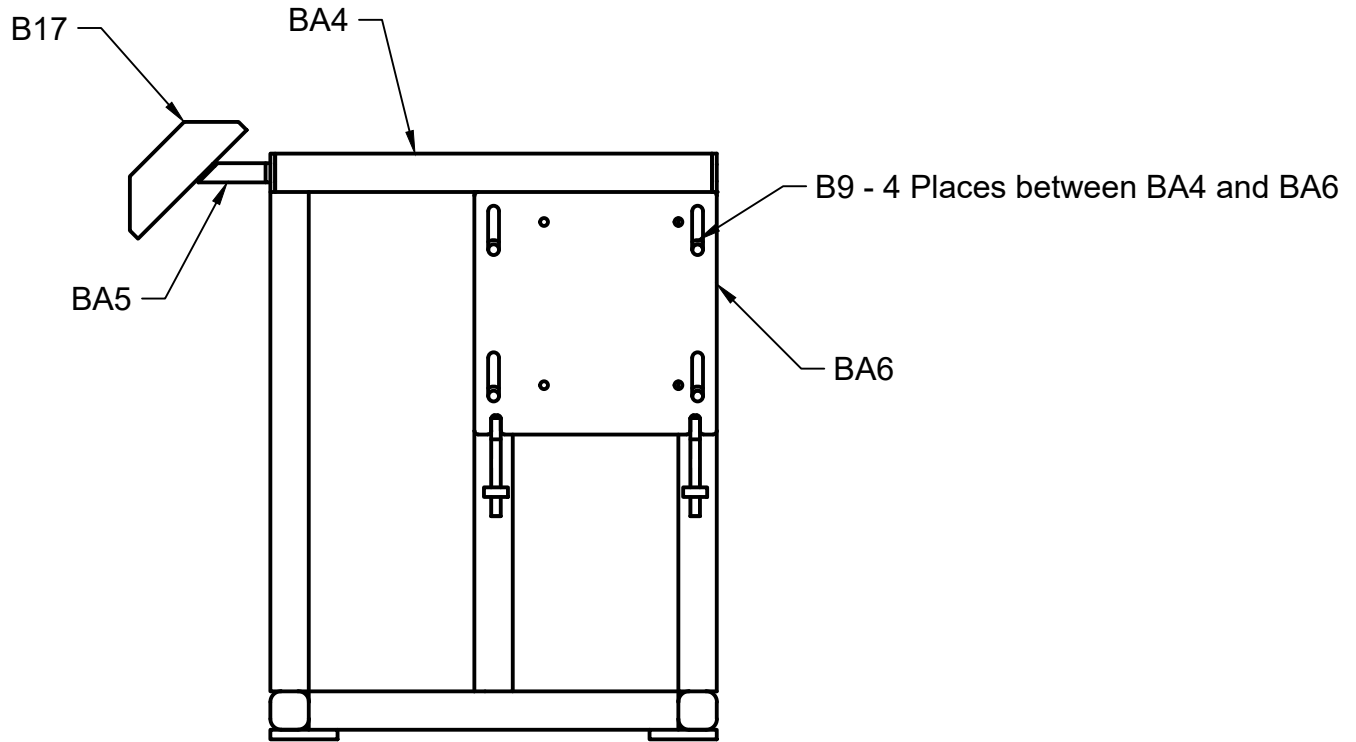
Nigel Tudor
Weatherbury Farm



This material is based upon work supported by the National Institute of Food and Agriculture, U.S. Department of Agriculture, through the Northeast Sustainable Agriculture Research and Education program under subaward number FNE19-945. Any opinions, findings, conclusions, or recommendations expressed in this publication are those of the author(s) and do not necessarily reflect the view of the U.S. Department of Agriculture.

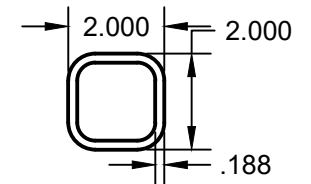
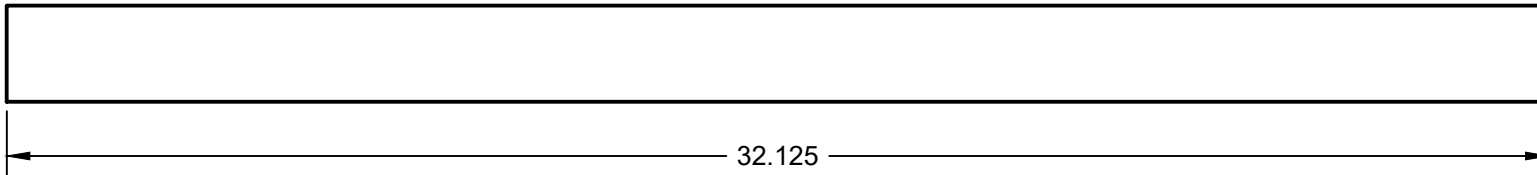
Project details found at https://projects.sare.org/sare_project/fne19-945/

Material: Assembly Number Required: 1 Process Notes:



Revision Record	Date		Tolerances <small>(except as noted)</small> Decimals: +/- .005 except where noted Fractional: +/- $\frac{1}{16}$ Angular: +/- 1°	Date: 1/24/2020	Part Number: BA1
				Scale: 1:10	Title: Base Assembly
				Drawn By: NIT	Project Name: Pearling Machine

Material: 2.0 x 2.0 x .18 Wall Tube Number Required: 2 Process Notes:



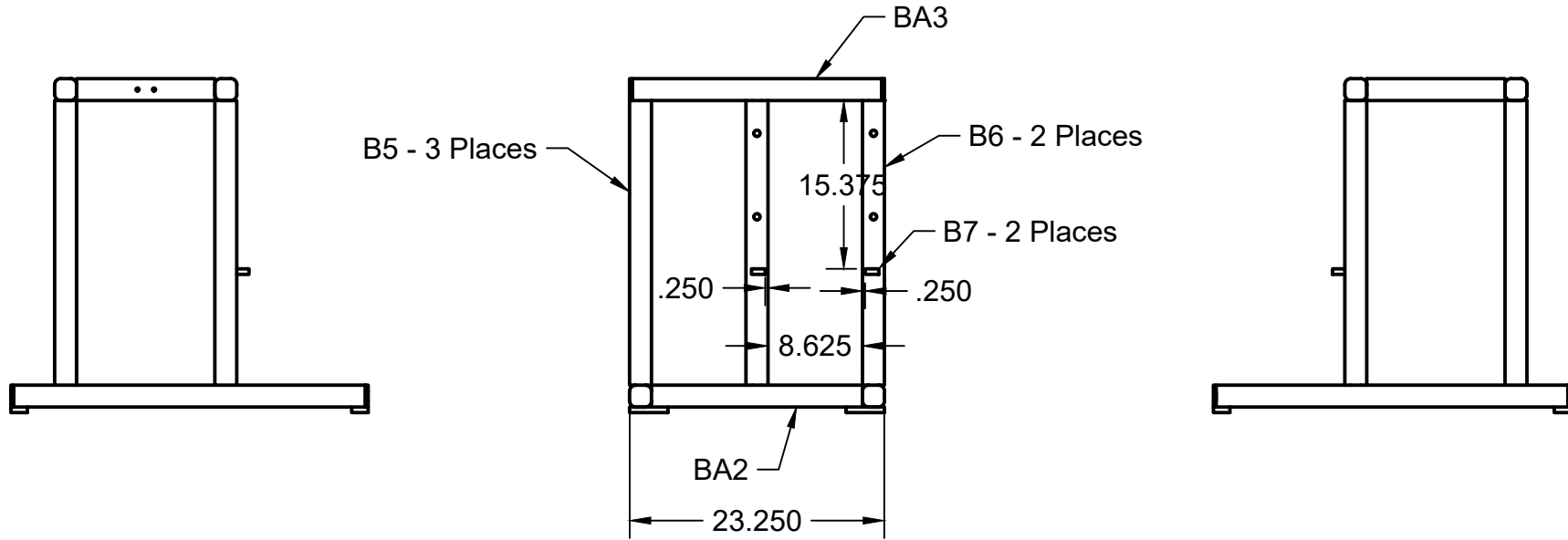
Revision Record	Date		Tolerances <small>(except as noted) Decimals: +/- .005 except where noted Fractional: +/- $\frac{1}{32}$ Angular: +/- 1°</small>	Date: 1/22/2020	Part Number: B3
				Scale: 1:8	Title: Base Tube
				Drawn By: NIT	Project Name: Pearling Machine

Material: Assembly

Number Required: 1

Process Notes:

Weld all joints, grind weld.
Get parts aligned within 1/16".



Revision Record

Date

Tolerances

(except as noted)
Decimals:
+/- .005 except where noted
Fractional:
+/- $\frac{1}{32}$
Angular:
+/- 1°

Date:

1/24/2020

Part Number:

BA4

Scale:

1:16

Title:

Base with Legs Assembly

Drawn By:

NIT

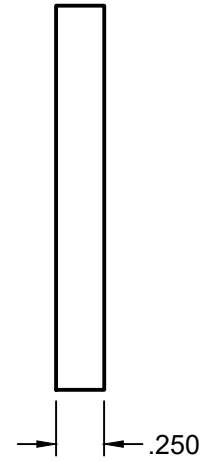
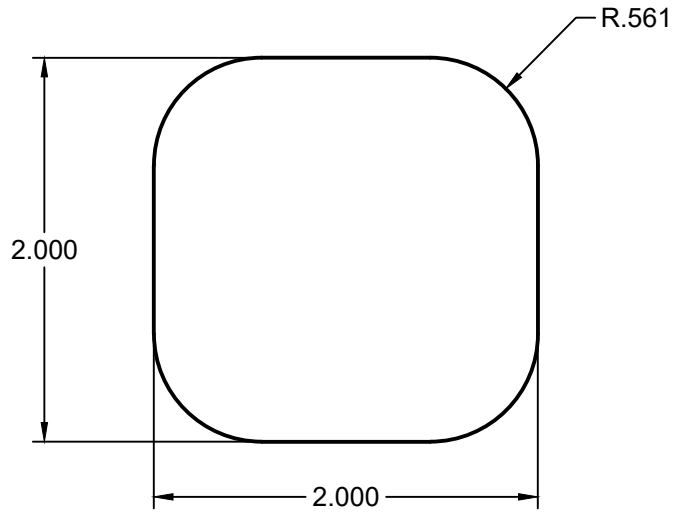
Project Name:

Pearling Machine

Material: 1/4" x 2" A36

Number Required: 8

Process Notes:



Revision Record

Date

Tolerances

Date:

1/22/2020

Part Number:

B2

(except as noted)
Decimals:
+/- .005 except where noted
Fractional:
+/- 1/32
Angular:
+/- 1°

Scale:

1:1

Title:

Cap

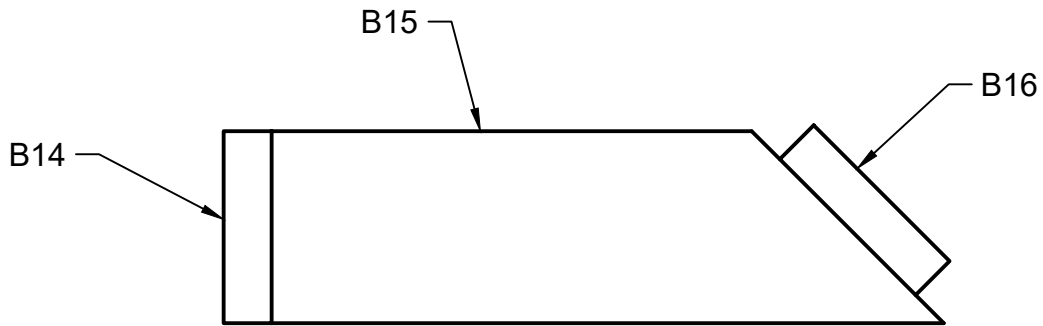
Drawn By:

NIT

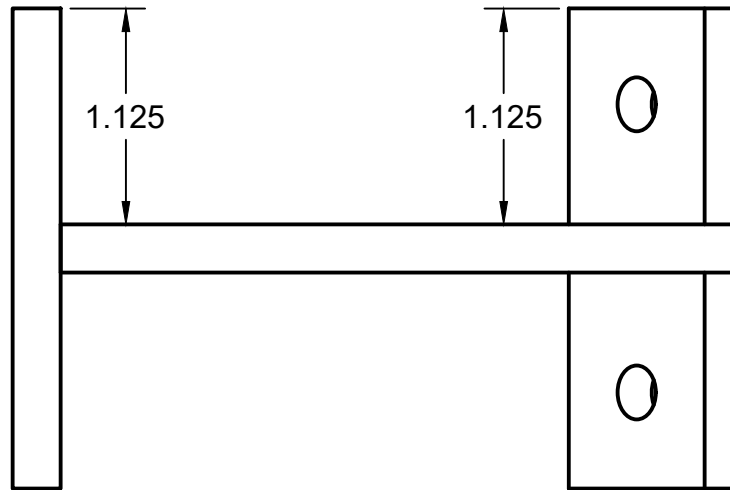
Project Name:

Pearling Machine

Material: Assembly Number Required: 1 Process Notes:



Weld all joints.
Get parts aligned within 1/16".

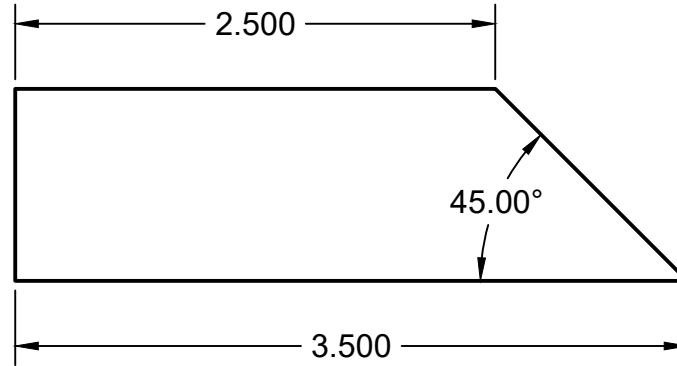
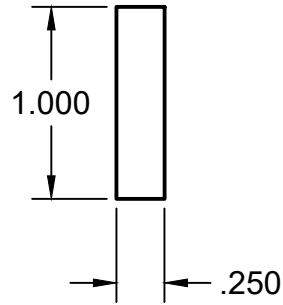


Revision Record	Date	Tolerances <small>(except as noted)</small> Decimals: +/- .005 except where noted Fractional: +/- 1/16" Angular: +/- 1°	Date: 1/24/2020	Part Number: BA5
			Scale: 1:1	Title: Chute Arm Assembly
			Drawn By: NIT	Project Name: Pearling Machine

Material: 1/4" x 1" HR A36

Number Required: 1

Process Notes:

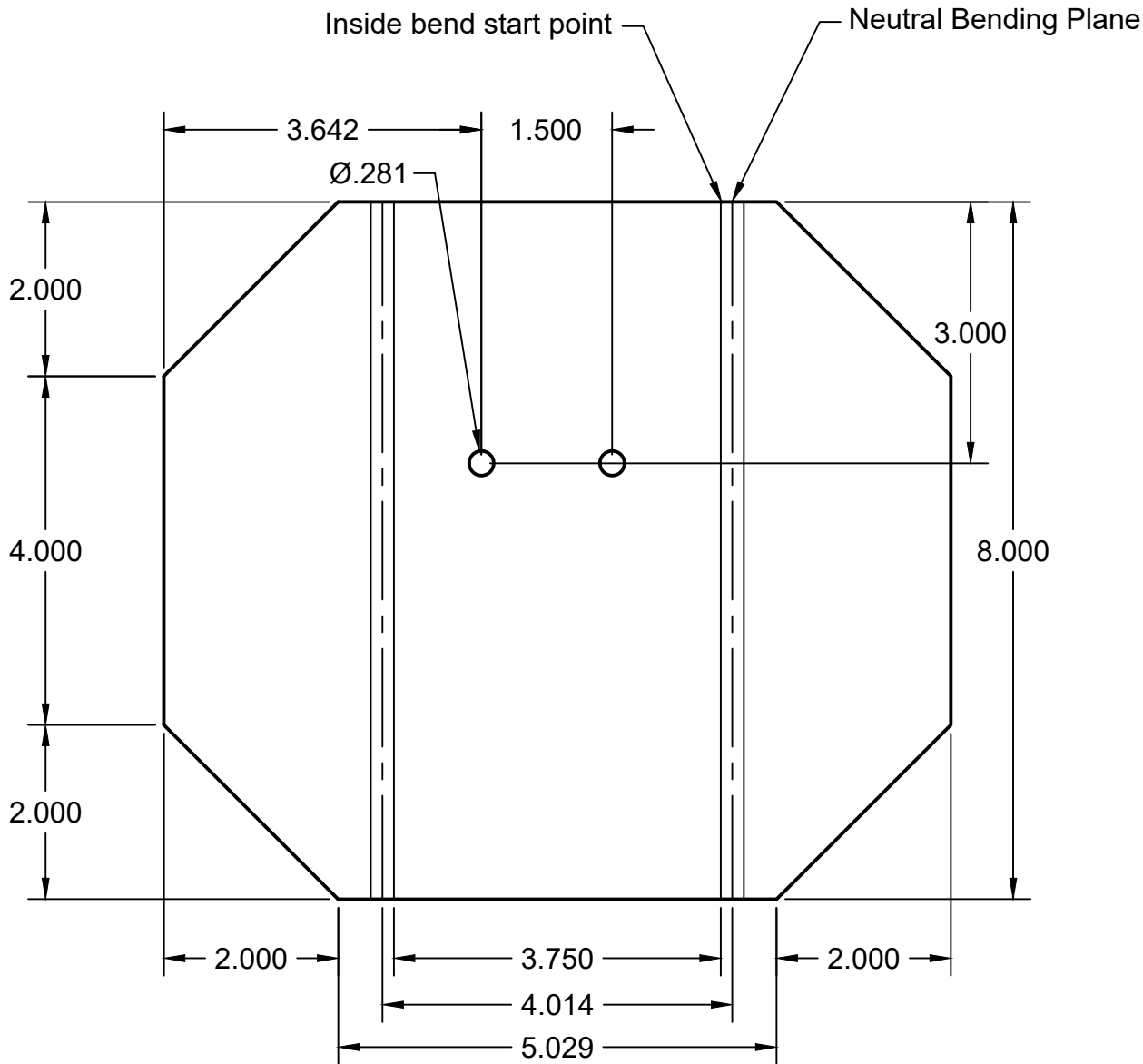


Revision Record	Date	Tolerances	Date:	Part Number:
		(except as noted) Decimals: +/- .005 except where noted Fractional: +/- 1/32 Angular: +/- 1°	1/23/2020	B15
			Scale: 1:1	Title: Chute Arm
			Drawn By: NIT	Project Name: Pearling Machine

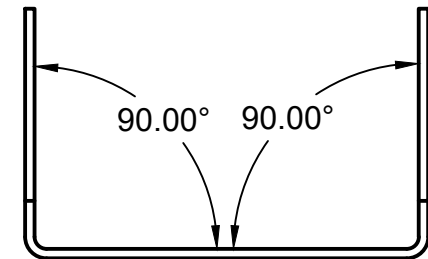
Material: 16Ga CR Sheet

Number Required: 1

Process Notes:



Bends:



Revision Record

Date

Tolerances

Date:

1/23/2020

Part Number:

B17

Scale:

1:4

Title:

Chute

Drawn By:

NIT

Project Name:

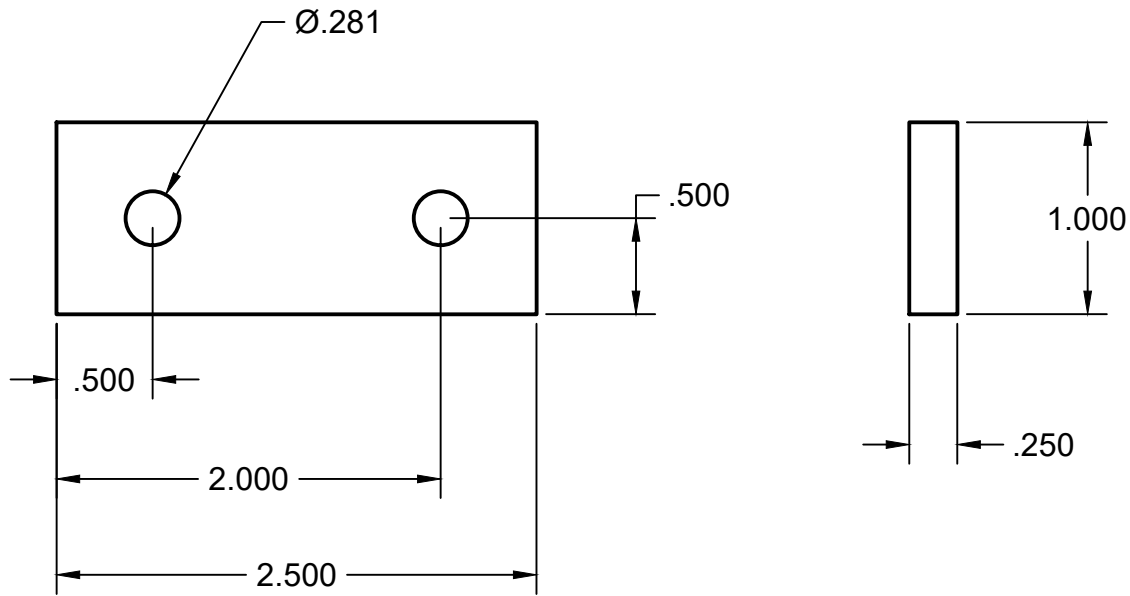
Pearling Machine

(except as noted)
Decimals:
+/- .005 except where noted
Fractional:
+/- $\frac{1}{32}$
Angular:
+/- 1°

Material: 1/4" x 1" HR A36

Number Required: 1

Process Notes:



Revision Record

Date

Tolerances

Date:

1/23/2020

Part Number:

B14

(except as noted)
Decimals:
+/- .005 except where noted
Fractional:
+/- 1/16"
Angular:
+/- 1°

Scale:

1:1

Title:

Chute Frame Mount

Drawn By:

NIT

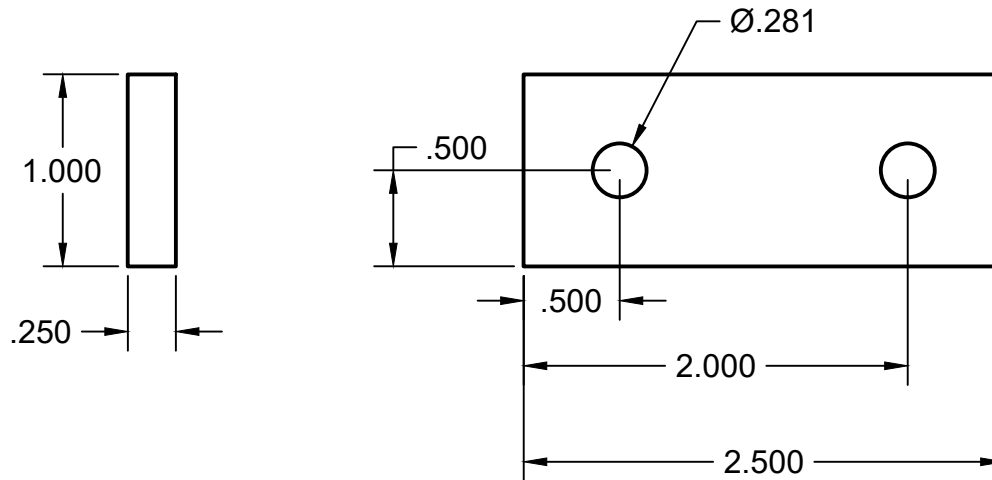
Project Name:

Pearling Machine

Material: 1/4" x 1" HR A36

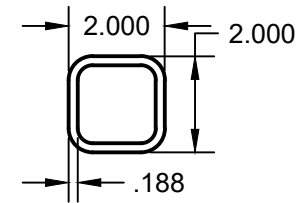
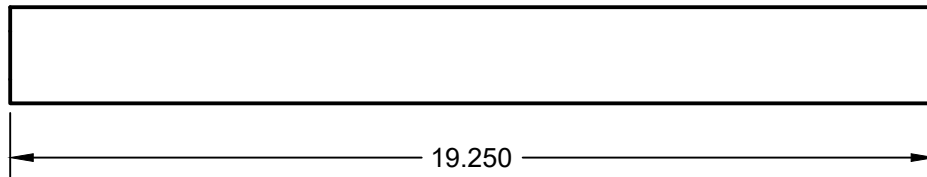
Number Required: 1

Process Notes:



Revision Record	Date	Tolerances	Date:	Part Number:
		(except as noted) Decimals: +/- .005 except where noted Fractional: +/- $\frac{1}{32}$ Angular: +/- 1°	1/23/2020	B16
			Scale: 1:1	Title: Chute Mount
			Drawn By: NIT	Project Name: Pearling Machine

Material: 2.0 x 2.0 x 0.18 Wall Tube Number Required: 2 Process Notes:

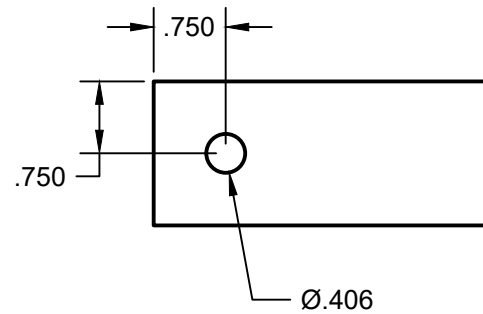
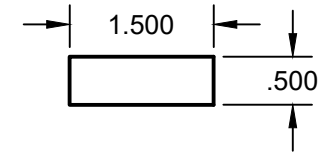
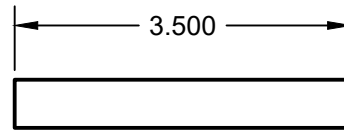
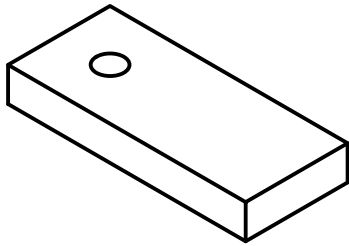


Revision Record	Date		Tolerances <small>(except as noted) Decimals: +/- .005 except where noted Fractional: +/- 1/16 Angular: +/- 1°</small>	Date: 1/22/2020	Part Number: B4
				Scale: 1:4	Title: Cross Tube
				Drawn By: NIT	Project Name: Pearling Machine

Material: 1/2 X 1 1/2 A36

Number Required: 4

Process Notes:



Revision Record

Date

Tolerances

Date:

1/22/2020

Part Number:

B1

(except as noted)
Decimals:
+/- .005 except where noted
Fractional:
+/- 1/32
Angular:
+/- 1°

Scale:

1:30

Title:

Foot

Drawn By:

NIT

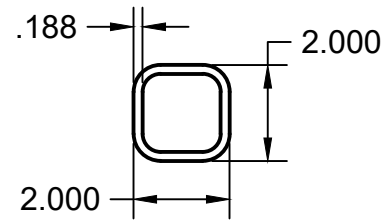
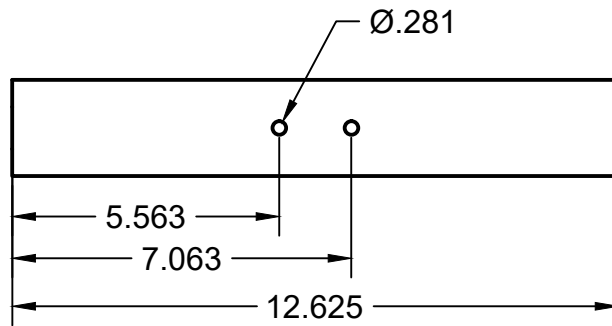
Project Name:

Pearling Machine

Material: 2.0 x 2.0 x .18 Wall Tube

Number Required: 1

Process Notes:



Revision Record

Date

Tolerances

Date:

1/22/2020

Part Number:

B13

(except as noted)
Decimals:
+/- .005 except where noted
Fractional:
+/- $\frac{1}{32}$
Angular:
+/- 1°

Scale:

1:4

Title:

Front Top End Tube

Drawn By:

NIT

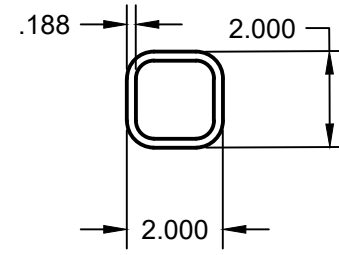
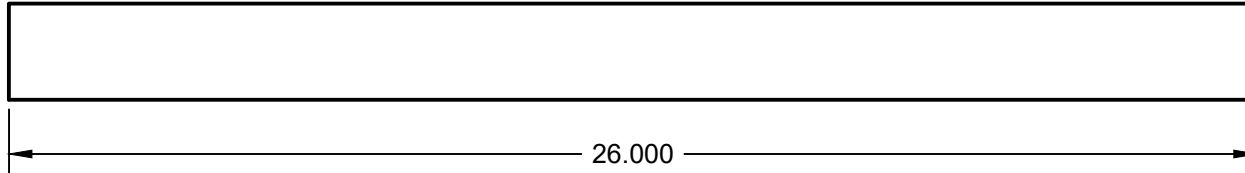
Project Name:

Pearling Machine

Material: 2.0 x 2.0 x 1.8 Wall Tubing

Number Required: 3

Process Notes:



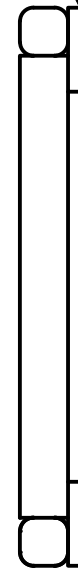
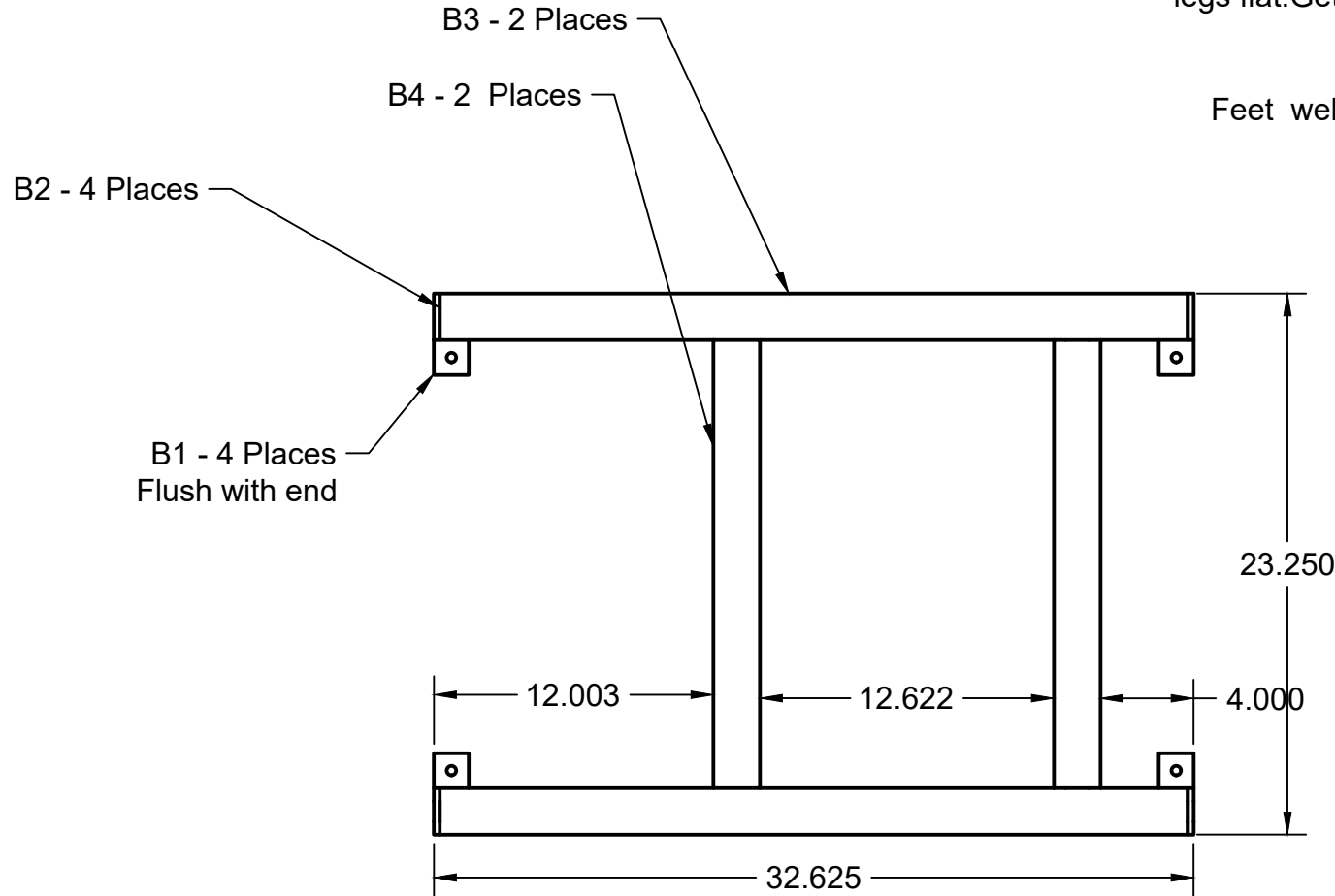
Revision Record	Date	Tolerances	Date:	Part Number:
		(except as noted)	1/22/2020	B5
		Decimals: +/- .005 except where noted	Scale: 1:4	Title: Leg
		Fractional: +/- $\frac{1}{32}$	Drawn By: NIT	Project Name: Pearling Machine
		Angular: +/- 1°		

Material: Assembly

Number Required: 1

Process Notes:

Weld all joints, grind weld areas that mate with legs flat. Get parts aligned within 1/16".

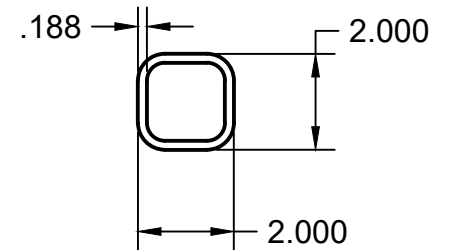
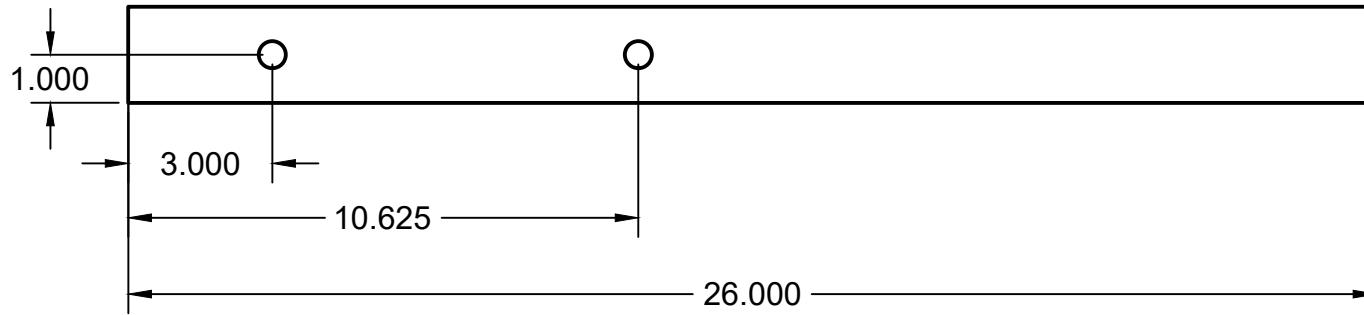


Revision Record	Date	Tolerances (except as noted) Decimals: +/- .005 except where noted Fractional: +/- $\frac{1}{32}$ Angular: +/- 1°	Date: 1/24/2020	Part Number: BA2
			Scale: 1:8	Title: Lower Base Assembly
			Drawn By: NIT	Project Name: Pearling Machine

Material: 2.0 x 2.0 x 1.8 Wall Tubing

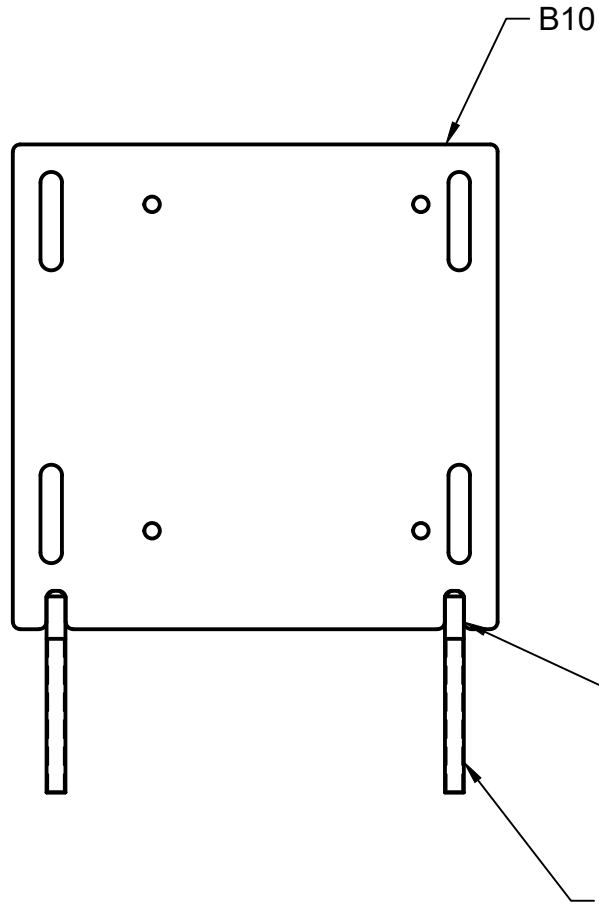
Number Required: 2

Process Notes:



Revision Record	Date	Tolerances	Date:	Part Number:
		(except as noted) Decimals: +/- .005 except where noted Fractional: +/- $\frac{1}{32}$ Angular: +/- 1°	1/22/2020	B5
			Scale: 1:4	Title: Motor Mount Leg
			Drawn By: NIT	Project Name: Pearling Machine

Material: Assembly Number Required: 1 Process Notes:



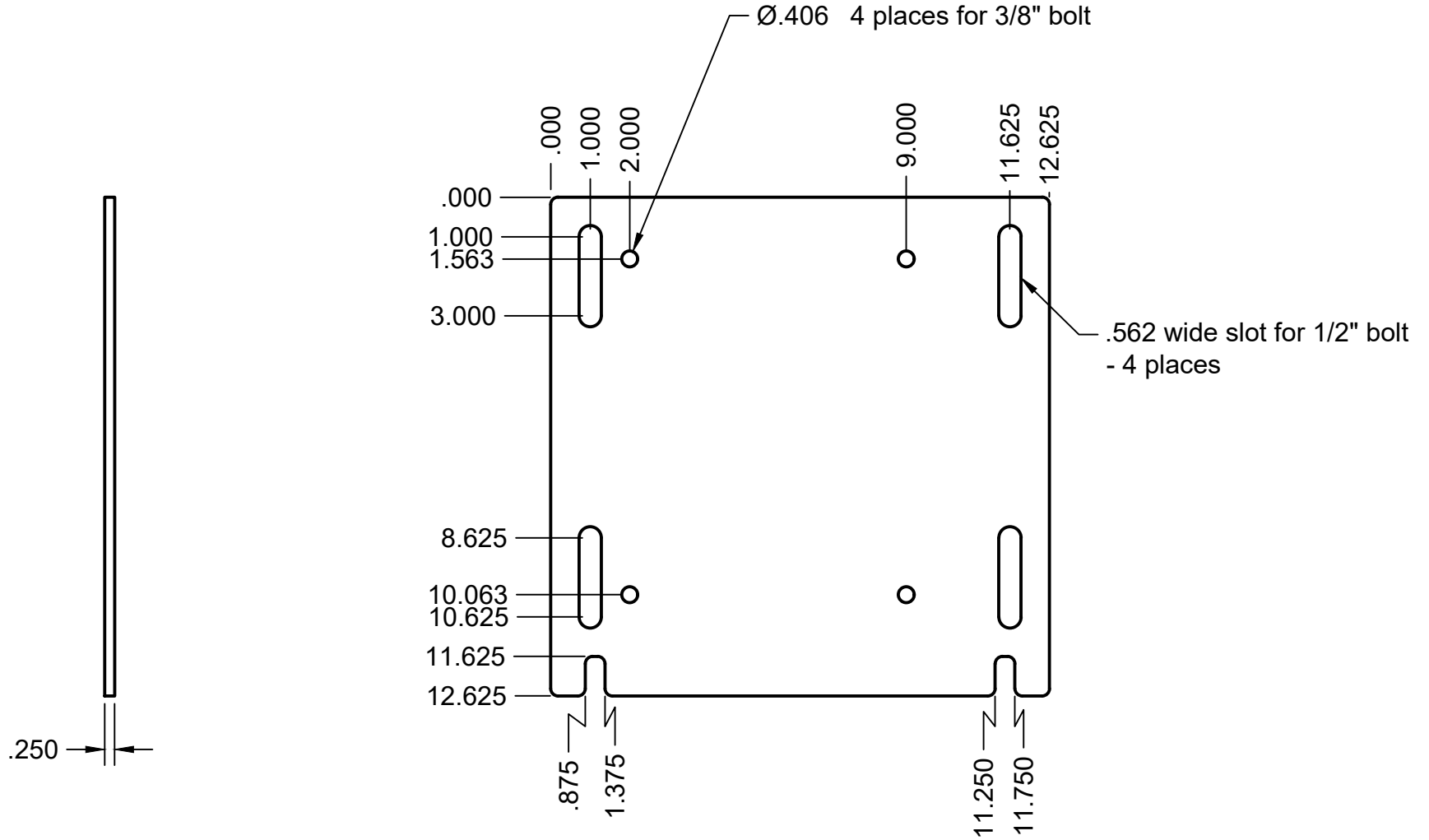
Weld screws to plate.
Keep square and avoid the threads.

Revision Record	Date	Tolerances <small>(except as noted)</small> Decimals: +/- .005 except where noted Fractional: +/- $\frac{1}{16}$ Angular: +/- 1°	Date: 1/24/2020	Part Number: BA6
			Scale: 1:5	Title: Motor Plate Assembly
			Drawn By: NIT	Project Name: Pearling Machine

Material: 1/4" HR A36 Plate

Number Required: 1

Process Notes: Plasma Cut

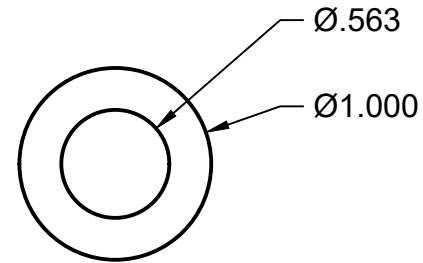
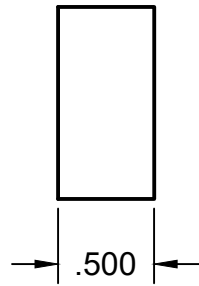


Revision Record	Date	Tolerances	Date:	Part Number:
		(except as noted) Decimals: +/- .005 except where noted Fractional: +/- $\frac{1}{32}$ Angular: +/- 1°	1/22/2020	B10
			Scale: 1:4	Title: Motor Plate
			Drawn By: NIT	Project Name: Pearling Machine

Material: 1.0 Dia 1018 Steel

Number Required: 2

Process Notes:



Revision Record

Date

Tolerances

Date:

1/22/2020

Part Number:

B9

(except as noted)
Decimals:
+/- .005 except where noted
Fractional:
+/- $\frac{1}{32}$
Angular:
+/- 1°

Scale:

1:1

Title:

Motor Plate Spacer

Drawn By:

NIT

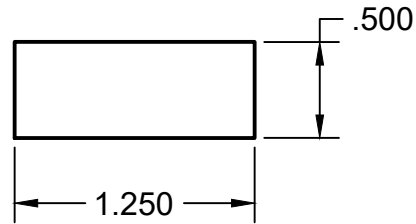
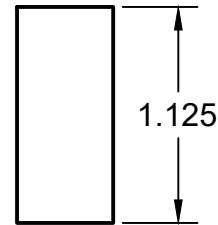
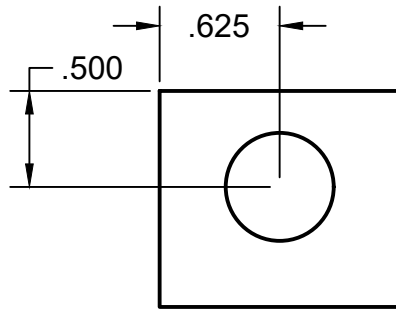
Project Name:

Pearling Machine

Material: 1/2 x 1 1/4 A36

Number Required: 2

Process Notes:

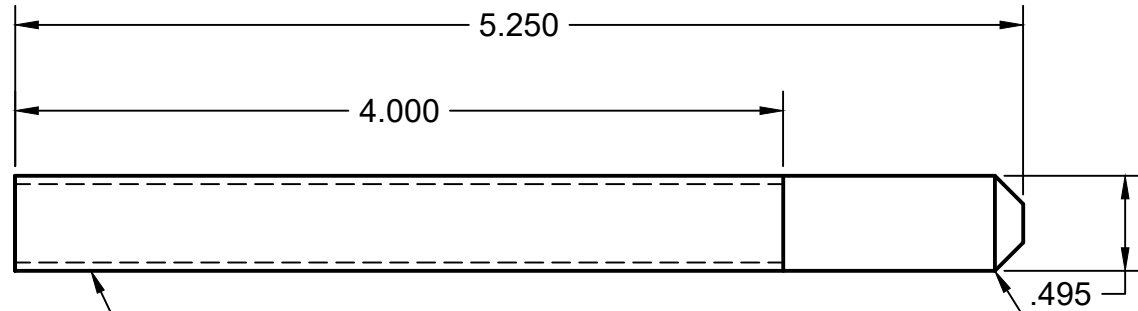


Revision Record	Date	Tolerances	Date:	Part Number:
		(except as noted) Decimals: +/- .005 except where noted Fractional: +/- 1/32 Angular: +/- 1°	1/22/2020	B7
			Scale: 1:1	Title: Tensioning Flange
			Drawn By: NIT	Project Name: Pearling Machine

Material: 1/2 Dia. 1018 Steel

Number Required: 2

Process Notes:



1/2-13 Thread 4" long

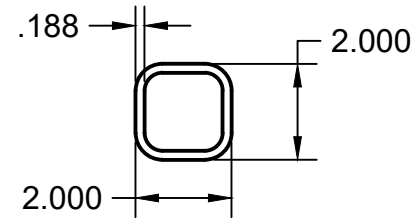
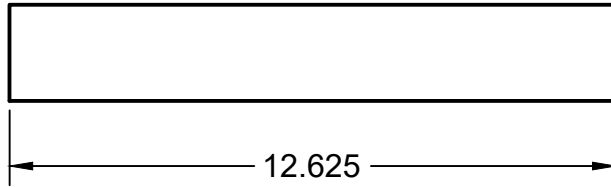
.150 Chamfer

Revision Record	Date	Tolerances	Date:	Part Number:
		(except as noted) Decimals: +/- .005 except where noted Fractional: +/- 1/32" Angular: +/- 1°	1/22/2020	B8
			Scale: 1:1	Title: Tensioning Screw
			Drawn By: NIT	Project Name: Pearling Machine

Material: 2.0 x 2.0 x .18 Wall Tube

Number Required: 1

Process Notes:

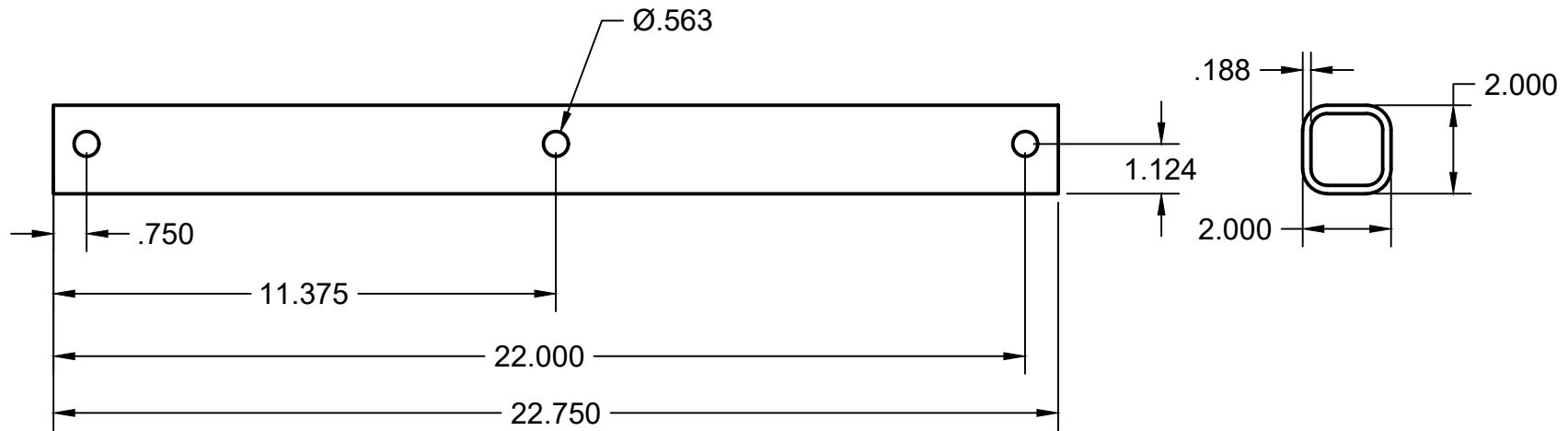


Revision Record	Date	Tolerances <small>(except as noted) Decimals: +/- .005 except where noted Fractional: +/- $\frac{1}{32}$ Angular: +/- 1°</small>	Date: 1/23/2020	Part Number: B11
			Scale: 1:4	Title: Top End Tube Back
			Drawn By: NIT	Project Name: Pearling Machine

Material: 2.0 x 2.0 x 0.18 Wall Tube

Number Required: 2

Process Notes:

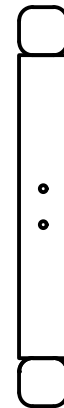
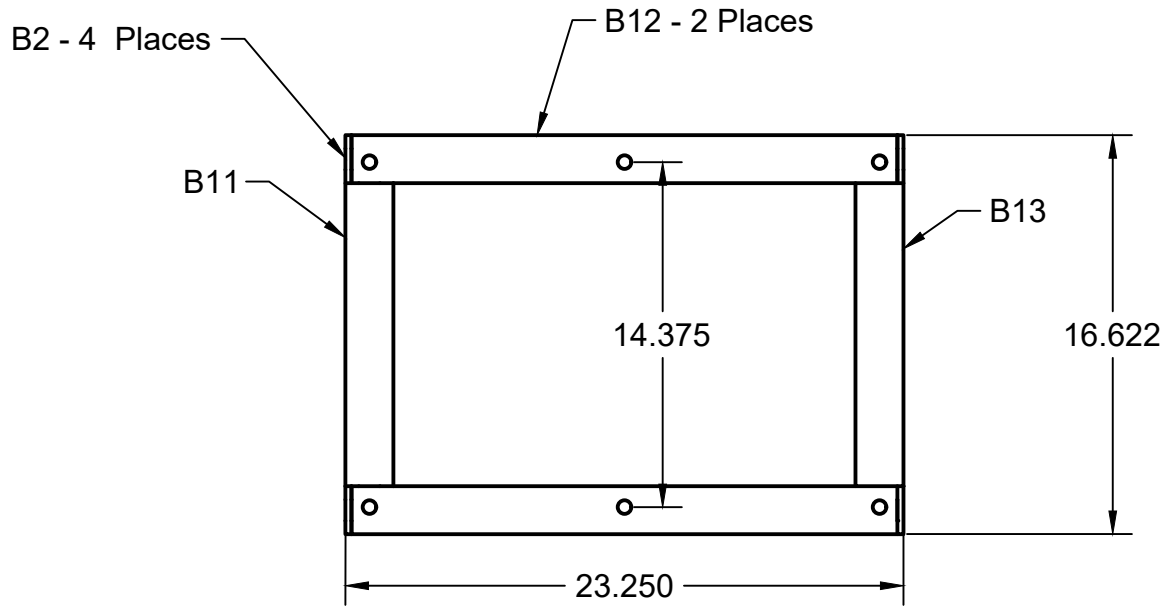


Revision Record	Date	Tolerances	Date:	Part Number:
		(except as noted) Decimals: +/- .005 except where noted Fractional: +/- $\frac{1}{32}$ Angular: +/- 1°	1/23/2020	B12
			Scale: 1:4	Title: Top Side Tube
			Drawn By: NIT	Project Name: Pearling Machine



Material: _____ Number Required: 1 Process Notes: _____

Weld all joints, grind weld areas that mate with legs flat. Get parts aligned within 1/16".



Revision Record	Date	Tolerances (except as noted) Decimals: +/- .005 except where noted Fractional: +/- $\frac{1}{32}$ Angular: +/- 1°	Date: 1/24/2020	Part Number: BA3
			Scale: 1:8	Title: Upper Base Assembly
			Drawn By: NIT	Project Name: Pearling Machine

