

RESEARCH STUDY FOR NEW BEEKEEPERS

This material is based upon work supported by the National Institute of Food and Agriculture, U.S. Department of Agriculture, through the Northeast Sustainable Agriculture Research and Education program under subaward number PG24-021.



SARE Northeast Partnership Grant

Program: Improving Survival Success Rates with Honey Bee Colonies through Supportive Cohorts

Program Leader: Tiffany Ayres, Master Beekeeper

Program Consultant: Marty Jones, PhD

BEEKEEPING LEADERSHIP

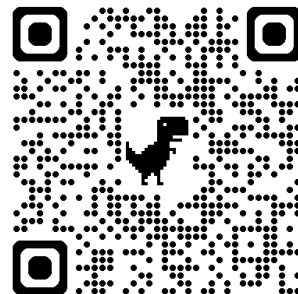
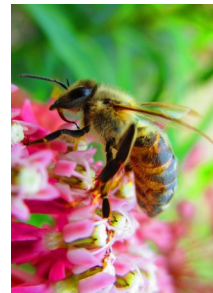
With the use of SARE Partnership Grant funds an experimental platform is being developed to aid new beekeepers. As high as 80% of new beekeepers quit within their first three years due to colony loss. This platform will offer additional guidance and cohort support to new beekeepers throughout the beekeeping season. Upon completion of the successful study, this replicable platform will be made available to participating organizations.

QUALIFIED APPLICANTS will have taken a Beekeeping 101 class and managed honeybees for 5 years or less. Applicants will need to participate in periodic virtual meetings, three (3) in-apiary field days, and periodic hive inspections/mite count reports. This program will provide new beekeepers additional seasonal support and establish cohort networks.

Applications for this experimental program are being accepted now for the limited space in 2025.

Please help spread the word so those "newbee's" in your region have a chance to participate. Final results will be made available to all participating organizations with the opportunity to replicate the program. Seasoned beekeepers wishing to contribute or participate as a guest speaker please contact us.

QUESTIONS: Please contact Tiffany Ayres (717) 968-9359 or Saybees.apiary@gmail.com



"Any opinions, findings, conclusions, or recommendations expressed in this publication are those of the author(s) and do not necessarily reflect the view of the U.S. Department of Agriculture."

www.KeysToBees.com (717) 968-9359

OPPORTUNITY FOR NEW BEEKEEPERS

This material is based upon work supported by the National Institute of Food and Agriculture, U.S. Department of Agriculture, through the Northeast Sustainable Agriculture Research and Education program under subaward number PG24-021.



SARE Northeast Partnership Grant

Program: Improving Survival Success Rates with Honey Bee Colonies through Supportive Cohorts

Program Leader: Tiffany Ayres, Master Beekeeper

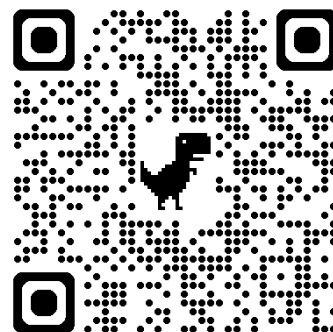
Program Consultant: Marty Jones, PhD

Many beekeepers will describe working with their bees as a period of calm, re-centering, or even zen-like qualities. However reaching this point of "being one with your bees" is a journey. This journey can be daunting at the beginning and though many new beekeepers start this journey full of excitement and wonder, many cut their journey short in defeat with the death of their bees. Beekeeping is not for the faint of heart; it takes work, it takes dedication, & it takes knowledge of the bees. The learning curve is quite steep at the beginning.

This experimental new beekeeping research program is designed to fill the gaps and continue new beekeepers on the projectory of enthusiasm towards successful beekeeping. With virtual meetings to review "State of the Bees", Q & A time, review of colony inspections reports, and mite count reports; not only will experienced beekeepers be available but cohort groups will be developed for supportive networking.

QUALIFIED APPLICANTS will have taken a Beekeeping 101 class and managed honeybees for 5 years or less. Applicants will need to participate in periodic virtual meetings, three (3) in-apiary field days, and periodic hive inspections mite count reports. This program will provide new beekeepers additional seasonal support and establish cohort networks. At **NO COST** to the participants, this program is funded by SARE Northeast Partnership Grant. Registration is open **NOW** to apply for a limited seats for 2025.

QUESTIONS: (717) 968-9359 or Saybees.apiary@gmail.com



"Any opinions, findings, conclusions, or recommendations expressed in this publication are those of the author(s) and do not necessarily reflect the view of the U.S. Department of Agriculture."

www.KeysToBees.com (717) 968-9359