

Figure 1. Yields of cultivars tested in our 2025 cultivar trial. Data are provided in total yield per 5 plants as we sampled a consistent 5 plants in each plot throughout the season. Weight of yield is in lbs.

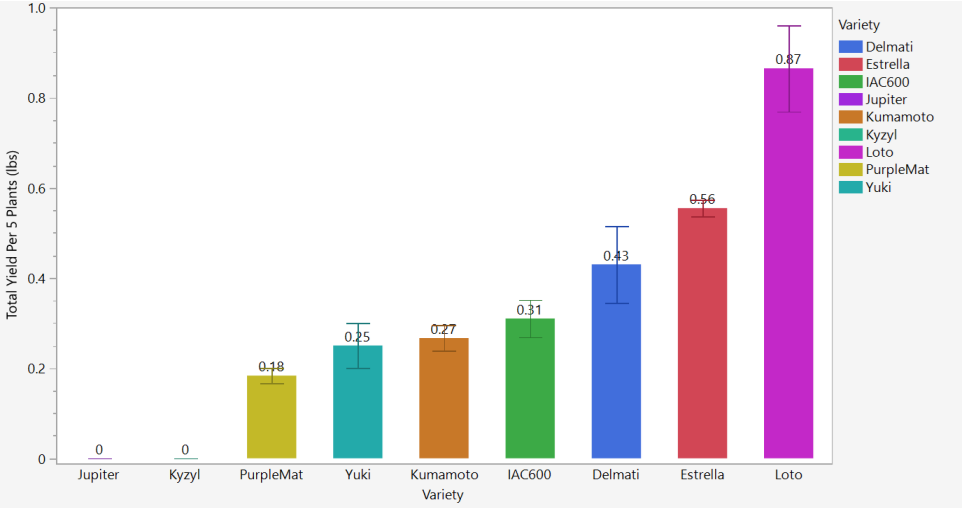


Figure 2. The effect of transplant age in the SRI trial on yield across the three varieties included in the trial. Data for this graph was produced with yields from unwinnowed rice as these lots experienced the least loss of grain in processing. Shaded area is equal to ± 1 SE.

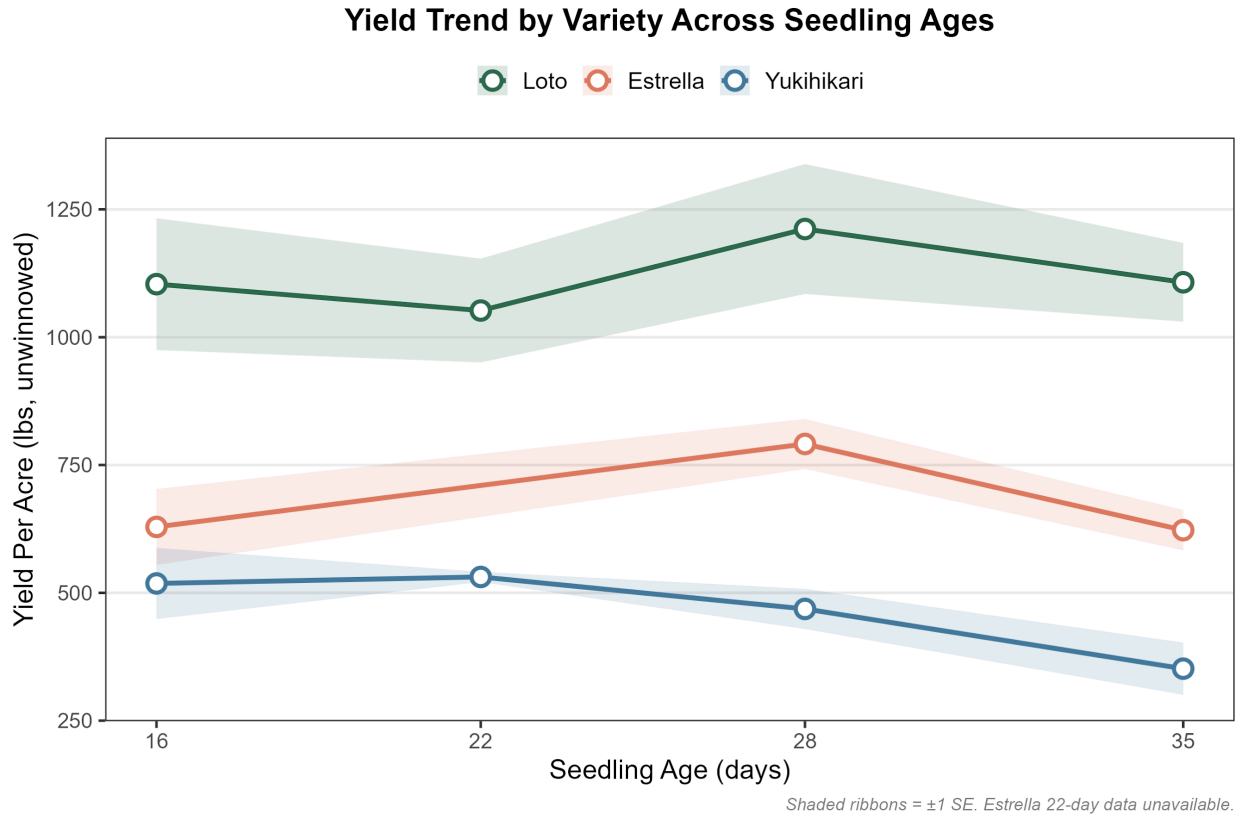


Figure 3. Heading date (50% flowering) of varieties included in the SRI trial. Loto had the latest heading date, with plants also maturing later in the season compared to Yukihihari and Estrella, across all seedling transplant ages.

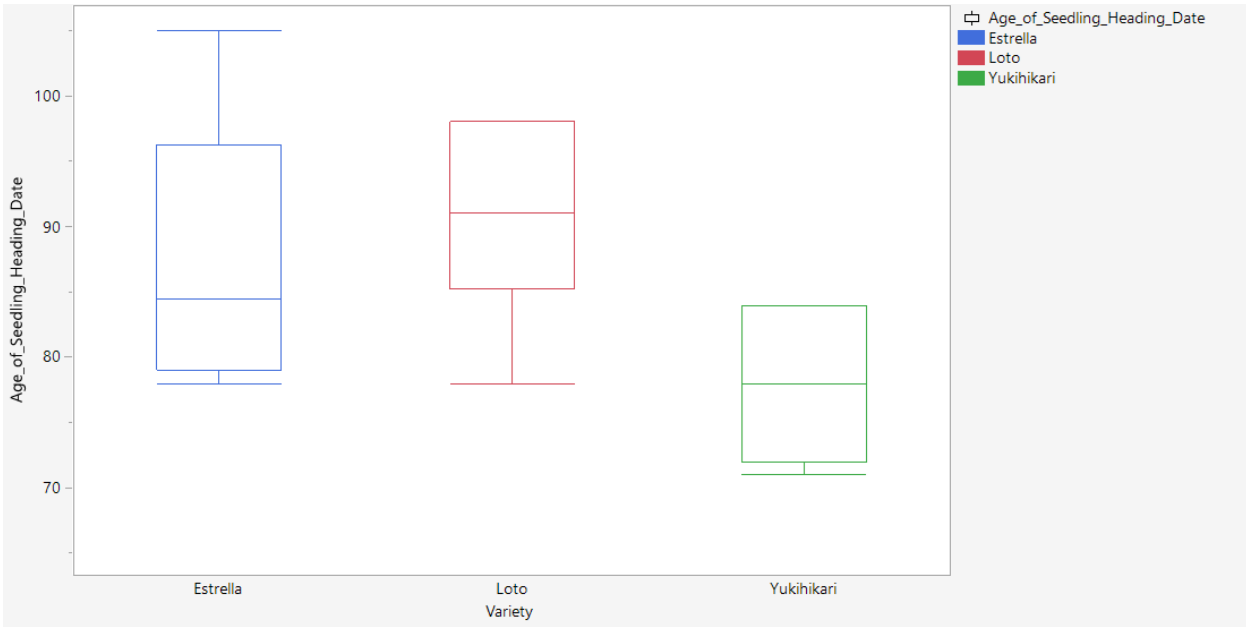


Figure 4. Heading date (50% flowering) of seedlings across varieties and transplant ages included in SRI trial (data from variety trial included for comparison with 35-day transplants). There is a considerable relationship between seedling age and days to 50% flowering across all varieties tested; transplants that were younger at time of transplant flowered sooner. However, varieties differed in the strength of this response, indicating a greater sensitivity to transplant date amongst Estrella and Yukihihari seedlings compared to Loto seedling, though Loto seedlings consistently flowered latest.

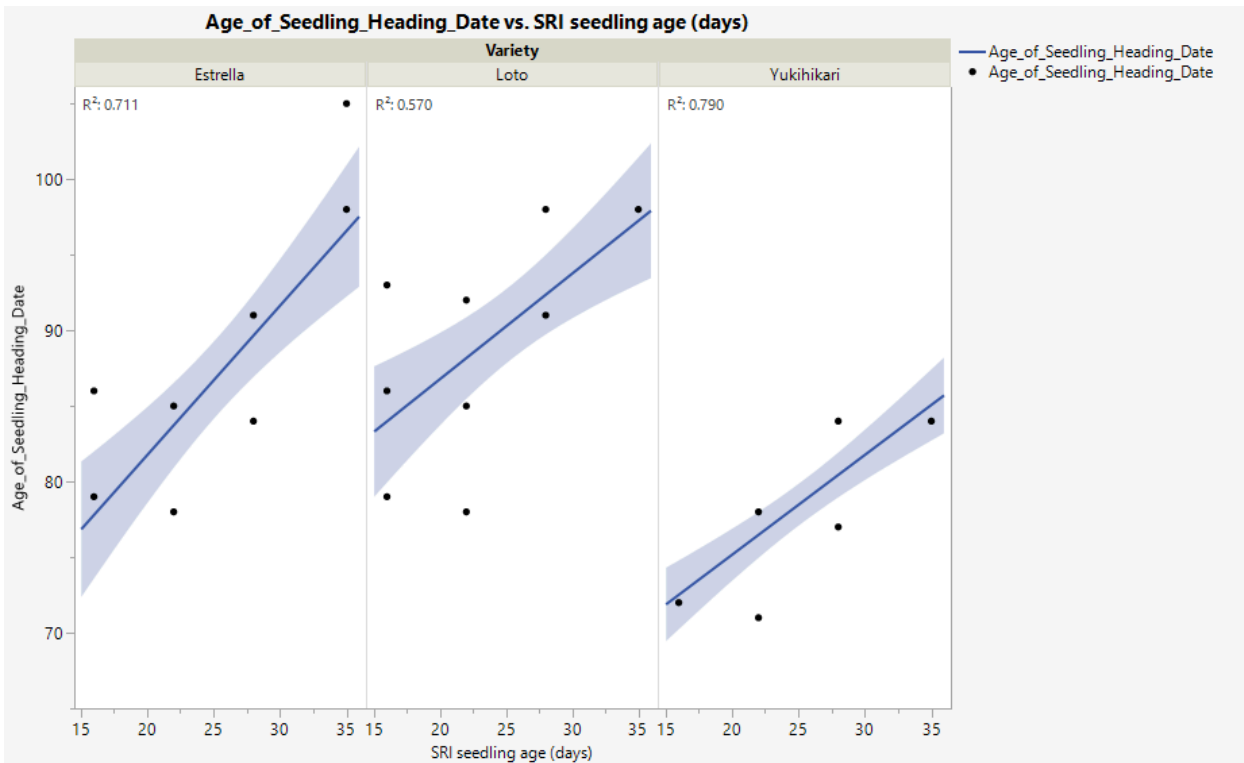


Figure 5. Number of flowers and flowering density of different varieties (A) in the SRI trial, separated by seedling age at transplant (B). Varieties tested in the SRI trial differed in the number of flowers produced per plant (flowering density). While Yukihihari plants flowered mostly densely, with more flowers produced overall (A), its flowering density was less sensitive to seedling age at transplant compared to Estrella and Loto seedlings across transplant dates (B).

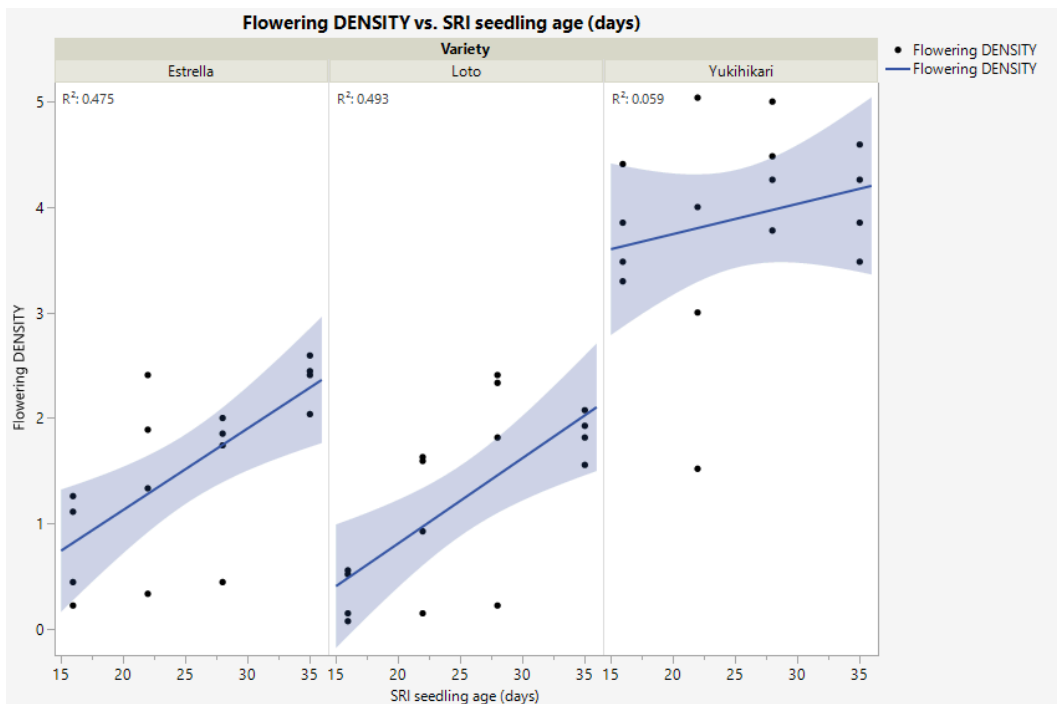
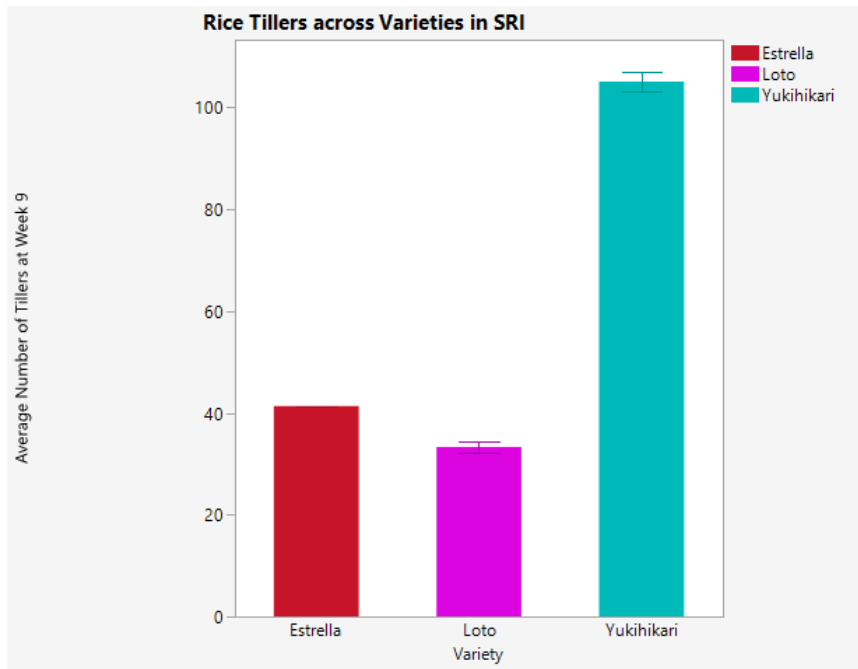


Figure 6. Trends amongst seedling transplant ages in heading date and yield response. Overall, earlier transplants flowered earlier in the season. Those that did flower sooner within their age cohort yielded slightly less grain in total. However, transplant age alone did not determine total yield.

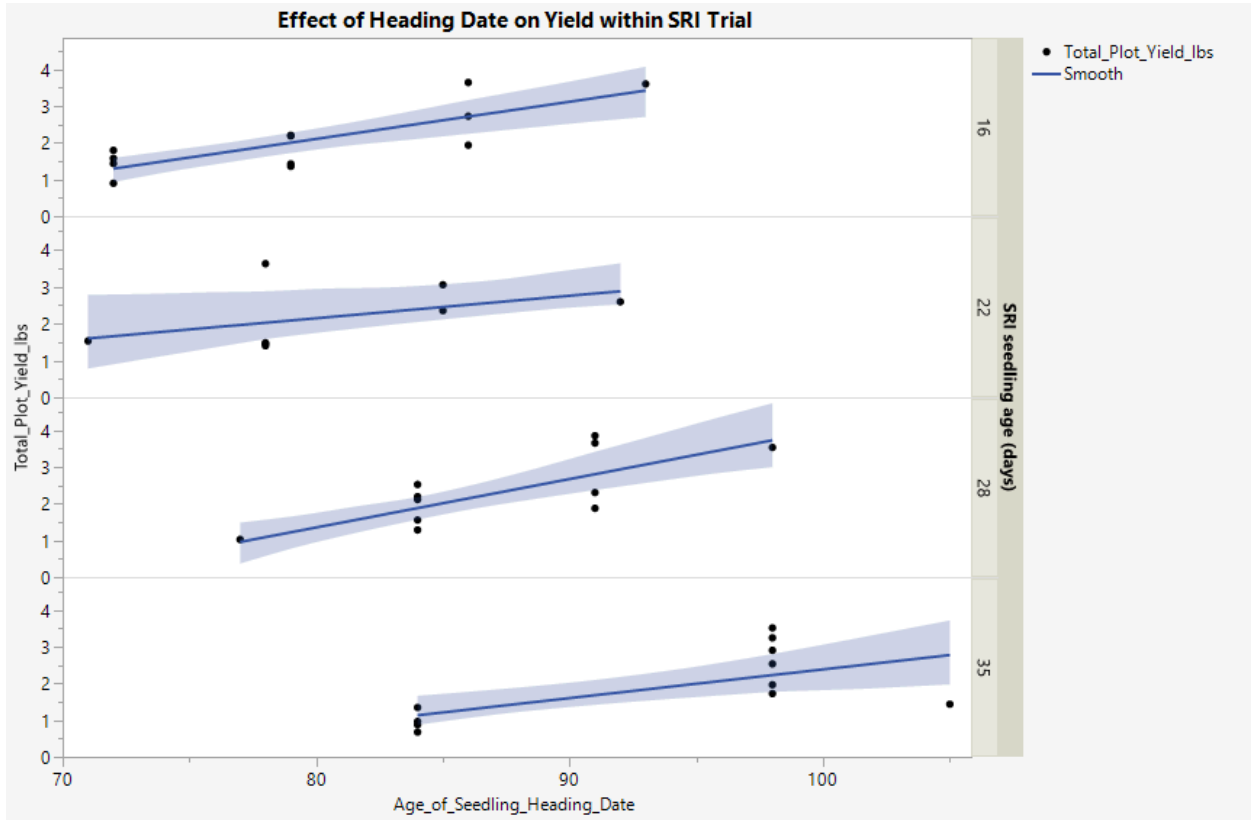


Figure 7. Visualization of yield distributions across seedling age cohorts and across varieties included in SRI trial. Though yielding less overall, Yukihihari may be a more consistent producer, with plots of constant size yielding similar amounts of rice, whereas Loto and Estrella produced somewhat less consistent yields. Yield consistency did seem to increase at 22 days of age at transplant and older.

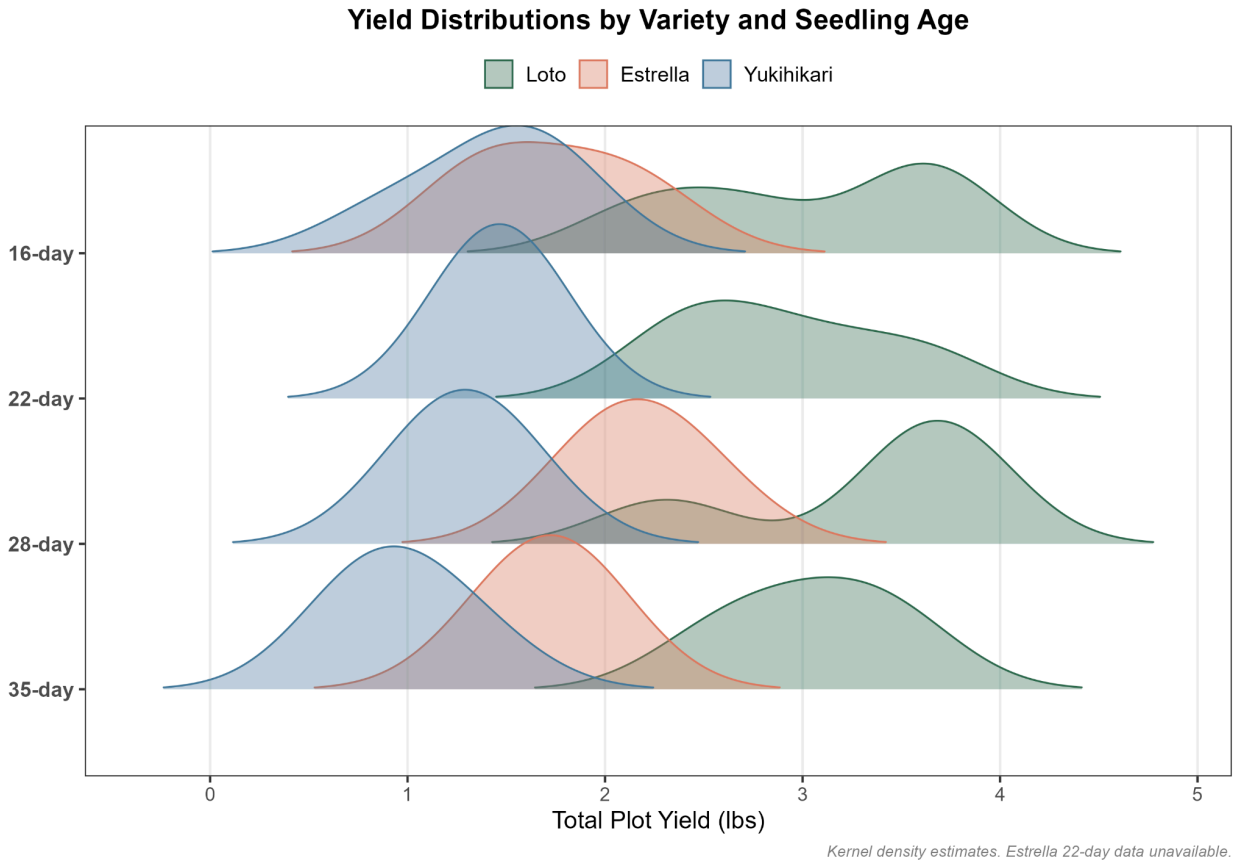


Figure 8: Photos from our 2025 season and 2026 celebration/rice tasting. A: Photos taken during transplant day, May 2025; B: Our group gathering before the farm tour and field day in August 2025; C: Flyers made by community members for rice tasting event; D: Photos from our collaboration and rice tasting event in Kingston, NY in April 2026.

A



B



C

CHEF Pruitte
Farmer
Jon
PRESENT
Coming Home to NY Rice

A TALK & RICE LOVERS PINNER

ELIZA Kingston
enoki
Home Farm

sunday april 26
tickets via
Eliza Resy or
www.homefarmny.com

SARE This material is based upon work supported by the National Institute of Food and Agriculture, U.S. Department of Agriculture through the Northeast Sustainable Agriculture Research and Education program under subaward number 19E25-124-AR000002846.

COMING HOME TO NEW YORK RICE

Farmer Jon and Chef Pruitt present Coming Home to New York Rice, a Home Farm x Eliza collaboration.

All proceeds from this event will support Home Farm in scaling the production of locally grown rice.

Join us for an educational talk led by Farmer Jon Kasza of Home Farm, alongside chefs and organizers JJ Kingman of Lunchbar and Tommy Lam of Enoki. Guests will sample four varieties of Home Farm rice side by side while immersed in the Rice Talk. (Talk and tasting tickets: \$30.) The full experience ticket invites guests to enjoy a four-course, family-style meal prepared by Chef Pruitt, highlighting local produce and centered around Home Farm rice. (Talk + dinner ticket \$150)

April 26th 5pm tickets via Eliza Resy or www.homefarmNY.com

An experiential evening showcasing New York rice.

D



ELIZA
COMING HOME TO NEW YORK
RICE WITH HOME FARM
April 20, 2024

Ramp Cakes

Sticky Rice Salad
red Thai chili, pickled eggplant, chickpeas, sesame seeds

Charred Cabbage Slice
pickled red onion, fresh ginger, miso paste, radishes

Tofu Potsticker
sweet potatoes, cauliflower, pork belly, carrot

Short Rib Misocons

Grilled Mushroom Lush
soybean sauce, pickled beets

Home Farm Charcoal Rice

Tossed Rice Crepes
chili oil, pulled rice