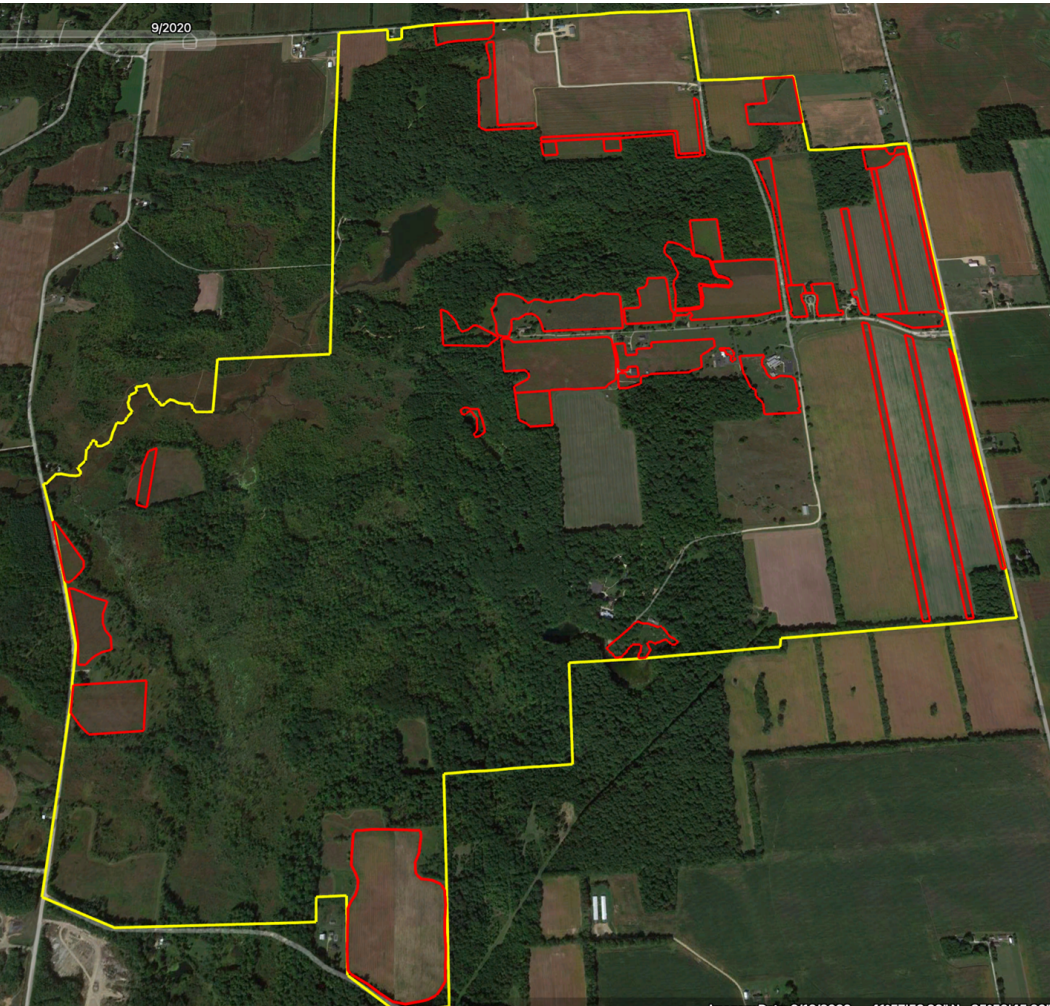


**"To make a prairie it takes a clover and one bee, One clover, and a bee, and revery. The revery alone will do, if bees are few."**

**- Emily Dickinson**

# **Edward Lowe Foundation Wagon Tour Information**



## **Edward Lowe Foundation *Prairie Habitat***

The Edward Lowe Foundation has been restoring the landscape by planting prairie habitat for over 20 years. The foundation has established about 200 acres of prairie land, with about 100 different species of grasses and flowering plants.

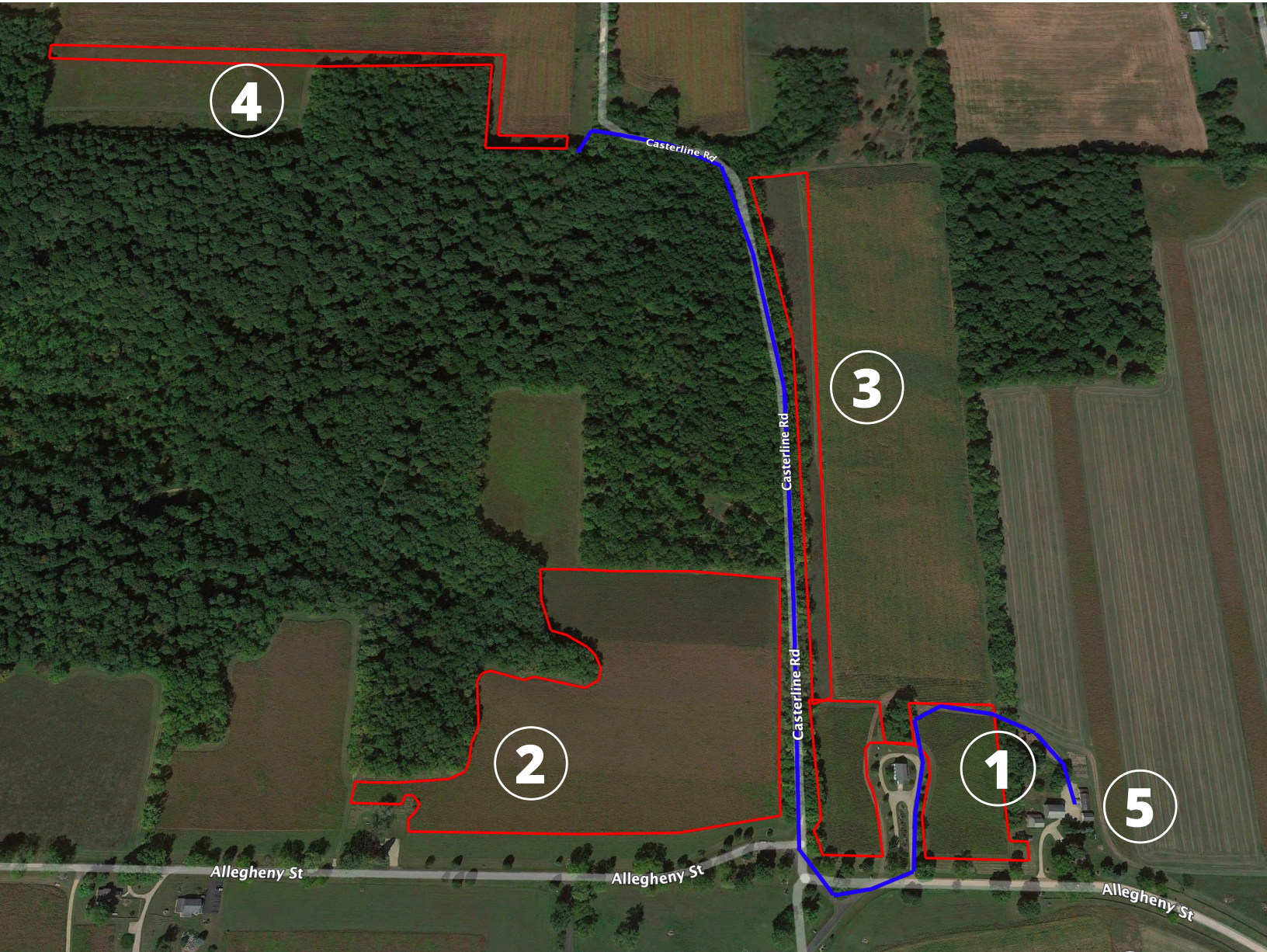
The goal of planting prairies have ranged from wildlife/pollinator habitat and corridors, filter strips, to now carbon sequestration and rebuilding soil health with rotating strips in agricultural systems.



**KBS LTER**  
Kellogg Biological Station  
Long-term Ecological Research

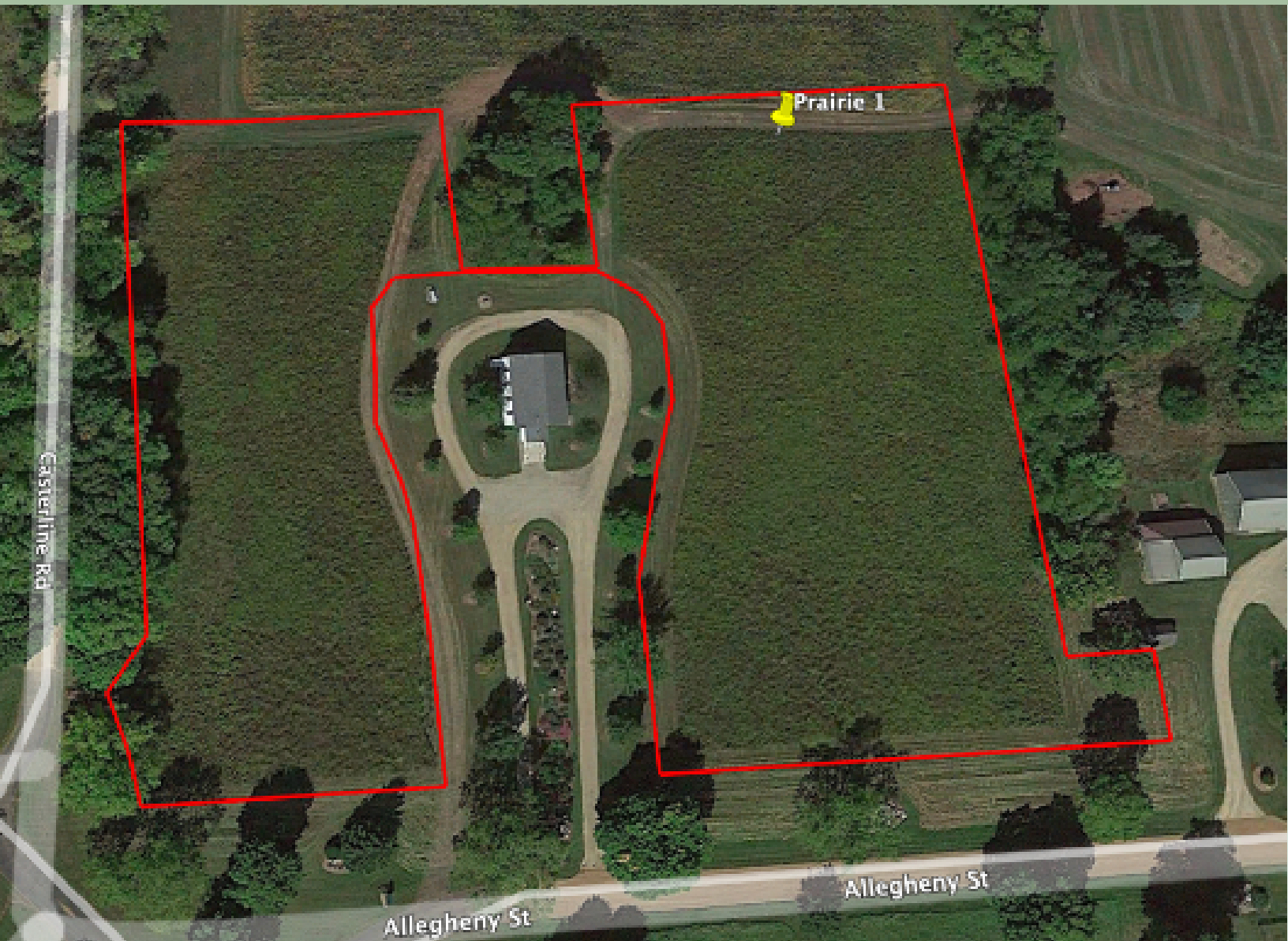


# Tour Route



- ① Penn Church Prairie
- ② Anton East Prairie
- ③ Casterline Rd. East Corridor
- ④ Knepple Corridor
- ⑤ Soil Pit

# #1 Penn Church Prairie



**Date Planted:** 5/8/17

**Acreage:** 4.8 acres

**Purpose for planting:**

This prairie was primarily installed for pollinator habitat and to make a visually pleasing back drop to the Penn Church. This prairie has a heavier forb component than most of our other plantings.

**Challenges:**

We are seeing large amounts of goldenrod starting to appear.

**Management Requirements:**

- Minimal management needed after year three
- We have it on a 3-4 year burn rotation to reduce woody shrubs and invasive species, while reinvigorating the stand and removing thatch.
- We typically chop the standing dead material in the spring, but this is completely unnecessary, and only done for aesthetically purposes with our retreat landscaping.

# #2 Anton East Prairie



**Planting Date(s):** 5/5/06, 5/8/08 (addition), 6/4/19 (addition)

**Acreage:** 17 acres

**Purpose for planting:**

Wildlife/pollinator habitat.

**Challenges:**

Large walnut population surrounding prairie which results in walnut saplings invading the prairie.

**Management requirements:**

- Minimal management needed
- We have it on a 3-4 year burn rotation to reduce woody shrubs and invasive species, while reinvigorating the stand and removing thatch.
- Occasionally we have chopped areas of walnut saplings in between burns.

# #3 Casterline Rd. East Corridor



**Date Planted:** 5/7/07

**Acreage:** 4.5 acres

**Purpose for planting:**

This stand serves as wildlife/pollinator habitat and corridor, connecting several larger prairie stands.

**Challenges:**

We see heavy briar competition along the tree line in the shaded areas.

**Management requirements:**

- Minimal.
- We have it on a 3-4 year burn rotation to reduce woody shrubs and invasive species, while reinvigorating the stand and removing thatch.
- We typically don't spend much time managing the briars and wood shrubs as this is an area that we are using to provide a slightly more shrubby area as a recommendation for more diverse bird habitat.

# #4 Knepple Corridor



**Date Planted:** 4/27/12

**Acreage:** 3.4 Acres

**Purpose:**

- This stand serves as wildlife/pollinator habitat and corridor between other prairies. In addition to being wildlife habitat
- Filter strip for the field as the topography drops down towards the forests, and eventually flows into Sharkey Lake.

**Challenges:**

We see some areas with briar competition in the more shaded areas near the wood line.

**Management requirements:**

- Minimal.
- We have it on a 3-4 year burn rotation to reduce woody shrubs and invasive species, while reinvigorating the stand and removing thatch.

# Appendix: Seed mixes

## #1 Penn Church Prairie

### Native Connections 2017: Short Grass Showy Mix

Grasses Oz per Acre: 56.00	Forbs Oz per Acre: 55.75	# of grass species: 8
Grasses Lbs per Acre: 3.50	Forbs Lbs per Acre: 111.75	# of Forb species: 34
Grasses sds/sq ft: 36.81	Forbs sds/sq ft: 45.76	

## #2 Anton East Prairie

### Native Connections 2008: Very Diverse Mix (Bold are varieties never used until 2008)

#### South Addition:

Grasses Oz per Acre: 80.0	Forbes Oz per Acre: 78.5	# of grass species: 14
Grasses Lbs per Acre: 5.0	Forbes Lbs per Acre: 4.9	# of Forb species: 57
		% grass by weight: 49.53%
		% forb by weight: 50.47%

### Native Connections 2019: Mesic Loam Pollinator Mix

#### North Addition:

Grasses Oz per Acre: 47.5	Forbs Oz per Acre: 78.5	# of grass species: 6
Grasses Lbs per Acre: 2.97	Forbs Lbs per Acre: 4.91	# of Forb species: 30
Grasses sds/ sq ft: 18.8	Forbs sds/sq ft: 38.54	
		% grass by weight: 37.70%
		% forb by weight: 62.30%

## #3 Casterline Road East Corridor

### Native Connections 2007: Showy Mix

Grasses Oz per Acre: 88.5	Forbs Oz per Acre: 67.75	# of grass species: 8
Grasses Lbs per Acre: 5.53	Forbs Lbs per Acre: 4.23	# of Forb species: 31

## #4 Knepple Corridor

### Native Connections 2012: Mid Diversity

Grasses Oz per Acre: 84.90	Forbs Oz per Acre: 45.52	# of grass species: 16
Grasses Lbs per Acre: 5.31	Forbs Lbs per Acre: 2.85	# of Forb species: 35
Grasses sds/sq ft: 30.06	Forbs sds/sq ft: 40.56	