

Collecting a Fecal Sample – Express Shipment Overnight on Ice

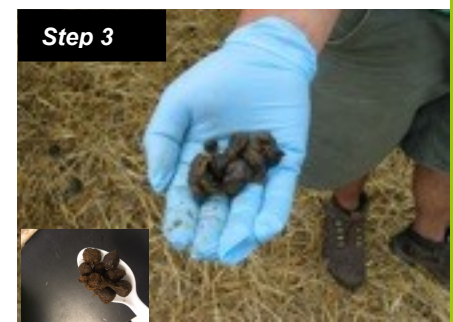
Supplies Needed:

- Gloves
- Lubricant
- Cooler and cold packs to keep samples cold during collection
- Sample submission form
- Styrofoam / hard cooler and cold packs for shipment

1. Put on a clean glove. Apply a nickel size amount of water or water-based lubricant to index and middle fingers (**Step 1**).
2. Insert index and middle fingers into the rectum of the animal, one finger at a time. No need to go very deep. Spread fingers to allow air into the rectum (**Step 2**). The air duplicates fullness in the rectum and a wave of muscular movement will often move feces out into your hand.

Note: Don't use this collection method to sample very small or young animals (less than 2 months old). If you can't insert two fingers into rectum don't force them. Another option is to collect a sample **immediately** after the animal has naturally deposited it. Rectal fecal sample collection is most successful when the animals have been resting for a while, so if you need to pen them up to do the collection, let them rest there for a couple of hours before collecting the samples if possible.

3. Remove ~4-6 grams of fecal matter. A heaping plastic teaspoon approximates the correct amount (**Step 3**). There is a minimum sample volume needed for the test.
4. Peel the glove off your hand keeping the fecal sample encased within it (**Step 4**).
5. Squeeze as much air as possible out of the glove. Twist the wrist portion of the glove and fasten with a label (farm and animal ID) making sure the label sticks to itself, as it won't stick to the glove. You can also twist and tie off the glove and label the glove itself with an indelible marker (**Step 5**).
6. Place samples in a cooler with ice to keep the samples cool until you can get them into a refrigerator. Do not put samples in direct contact with ice/ice packs to prevent freezing. Store the samples in the refrigerator until shipping.



View our video clip on fecal sample collection for shipping overnight on ice:



<https://www.youtube.com/watch?v=3cUzCTpSTEk&feature=youtu.be>

It is important to carefully review and follow the shipping instructions for the lab that you are sending the samples to including filling out and enclosing any sample submission forms, shipping the samples to reach the lab the next day, and ensuring the lab is open to receive samples that day (usually not on weekends or holidays).

For more information including our information sheets, *Why Do Sheep and Goat Fecal Egg Counts*, *How To Do The Modified McMaster Fecal Egg Counting Procedure* and our demonstration video on fecal egg counting, visit our website at <http://web.uri.edu/sheepngoat>. The video can also be viewed directly from the URI YouTube channel page (UniversityOfRI): https://www.youtube.com/watch?v=ZZQymZKe_hs.

This information sheet was developed by the Department of Fisheries, Animal and Veterinary Science, College of the Environment and Life Sciences, University of Rhode Island. Updated April 2019. This work is supported by the USDA National Institute of Food and Agriculture (NIFA) Northeast Sustainable Agriculture Research and Education Program Project LNE15-342 and USDA NIFA Animal Health and Disease Program Project 1007290. URI provides equal program opportunity.

