

Figure Legends

Figure 53. Seawater temperature (°C) at Timber Cove, Gouldsboro, Maine during high tide from 18 June 2022 to 21 January 2023.

Figure 54. Seawater temperature (°C) at Mud Hole Cove, Great Wass Island, Beals, Maine during high tide from 18 June 2022 to 31 December 2022. (The recording device failed 20 days prior to the sampling date.)

Figure 55. Seawater temperature (°C) at Timber Cove, Gouldsboro, Maine and Mud Hole Cove, Great Wass Island, Beals, Maine during the study period (see legends for Figs. 53-54).

Figure 53.



Figure 54.

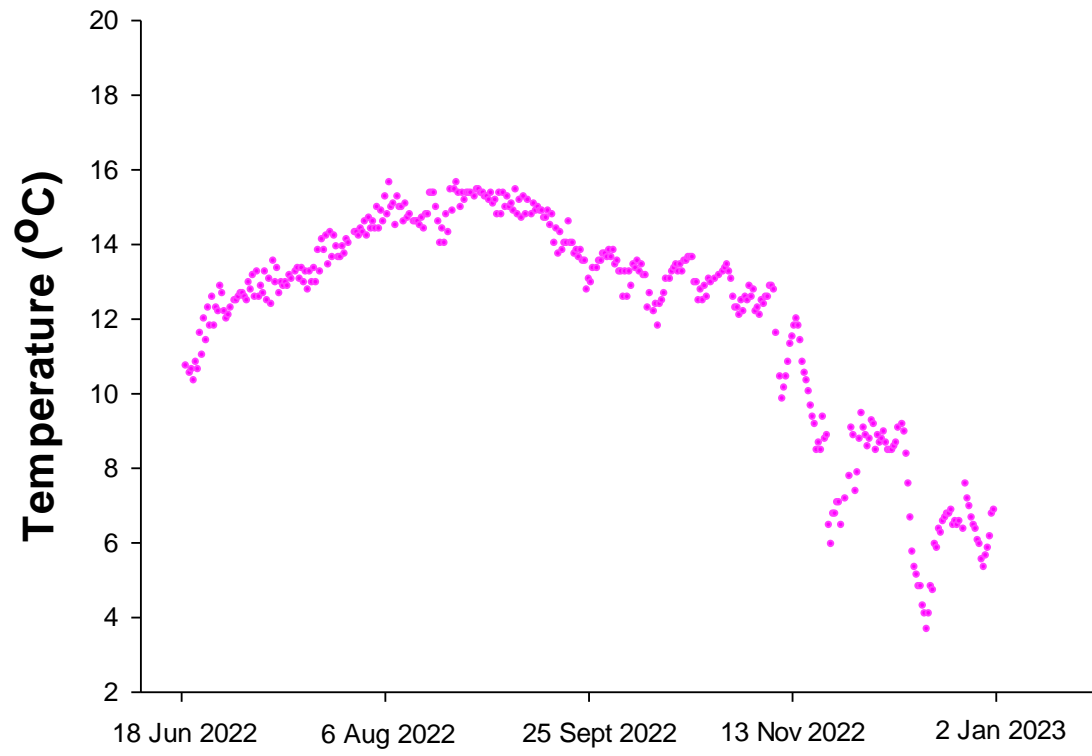


Figure 55.

