

# HOLISTIC WETLANDS GRAZING

OPTIMIZING COWS, ECOSYSTEMS, AND THE FARM



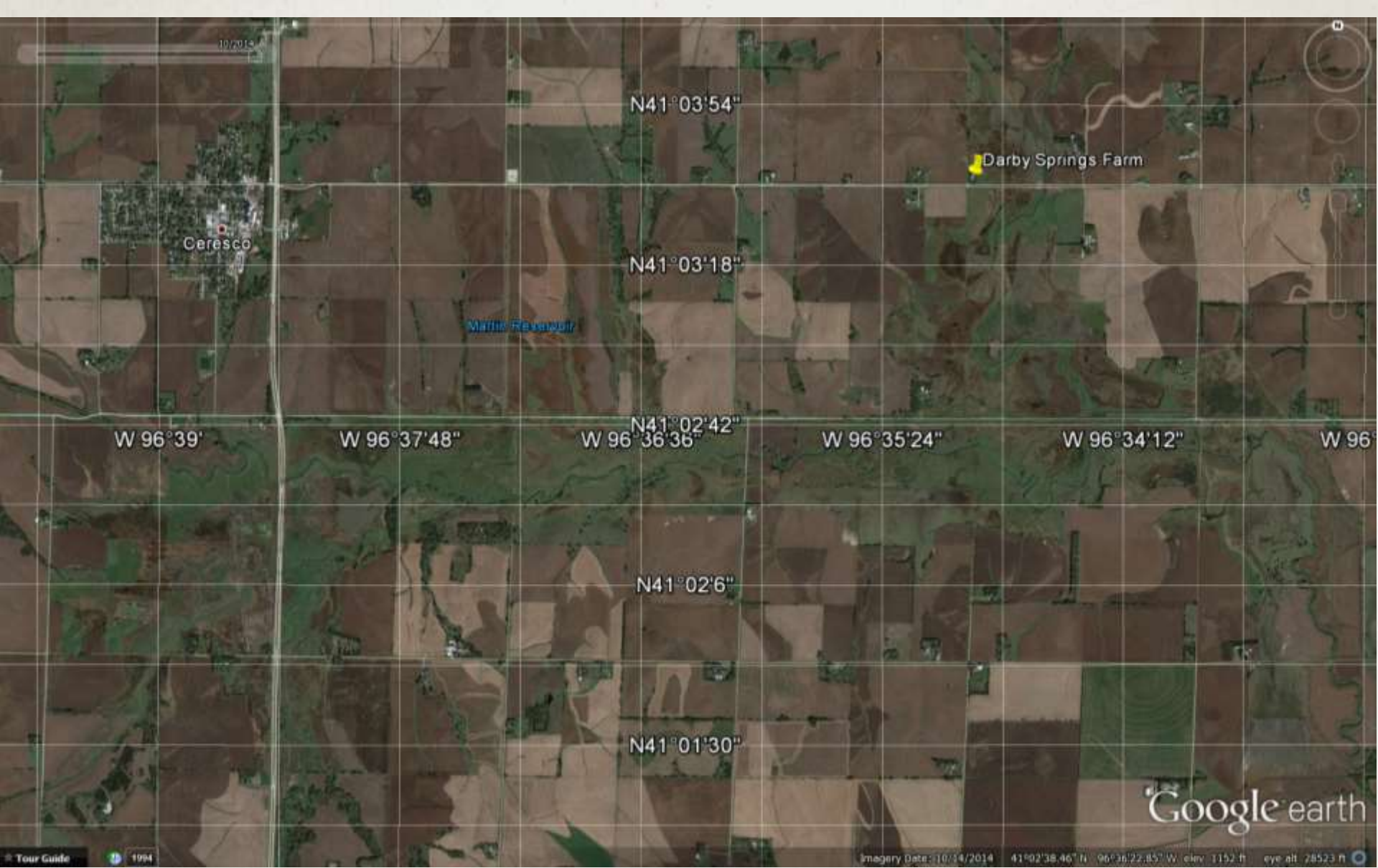
*Darby Springs Farm*

# LESSONS LEARNED

- Wetland plants provide quality nutrition
  - Daily moves are a minimum
  - Cow comfort had some surprising benefits
  - Plant species shifted
  - Walkways helped!
-

# HISTORY

---



October 2014

N41°03'54.72"

August 2009

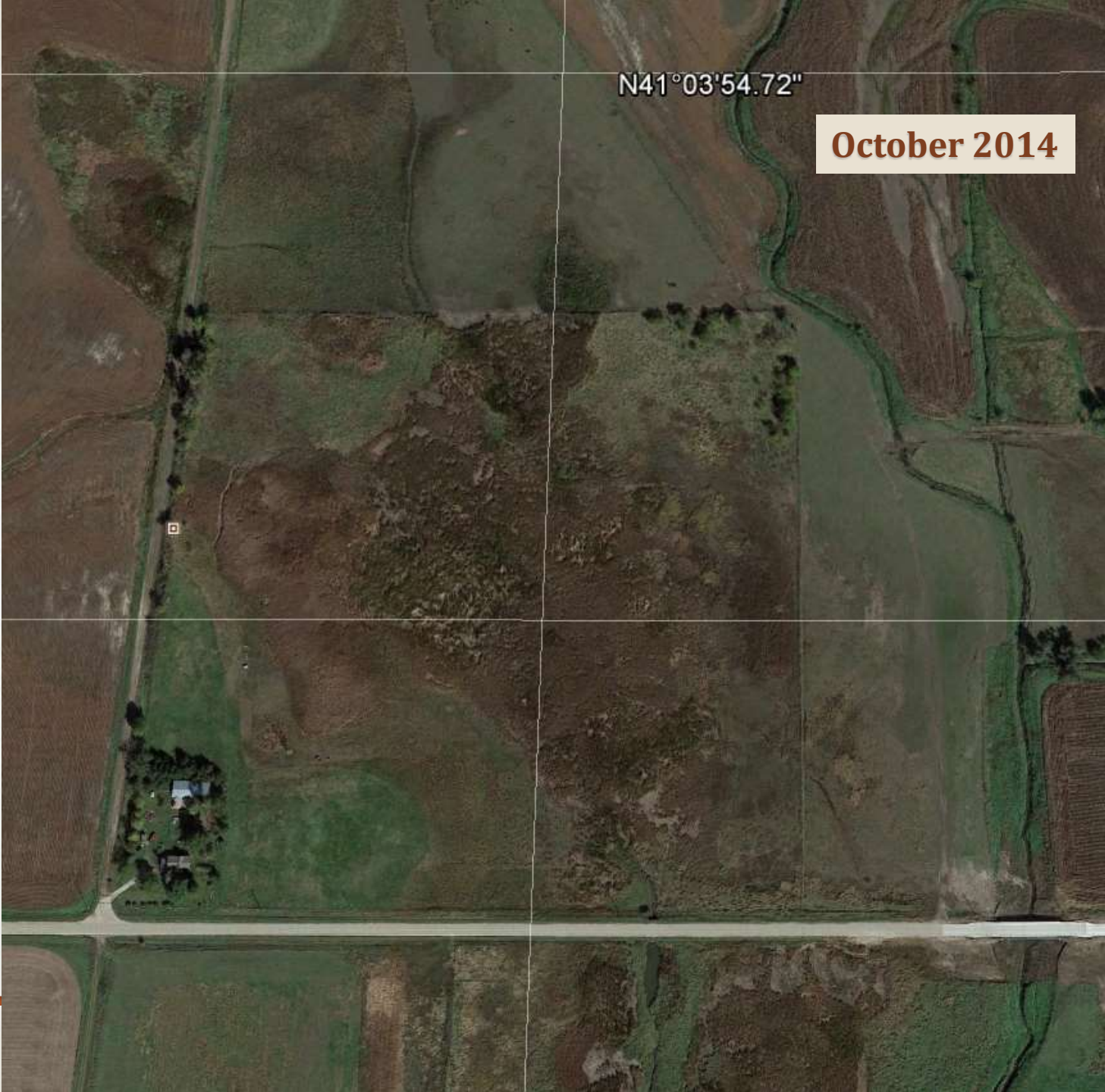
Items in the 3D viewer

Image USDA Farm Service Agency




N41°03'54.72"

October 2014



# 2015 GRAZING PLAN



Free graze 7-10 days

Rotation Graze  
6-24 hrs blocks



June 1, 2015 Ungrazed





October 11, 2015 Ungrazed



May 2015 Grazed



October 11, 2015 Graze line



June 1, 2015 First Graze



October, 11 2015 Second grazing



October 11, 2015 Graze line



June 1, 2015 First graze



October 11, 2015 Second graze





October 11, 2015 Second graze



June 1 Heavy impact



June 22: wet meadow, Reed Canary Grass



July 27: Continuous grazing, Reed Canary Grass

# CHALLENGES

---



# WETLAND CROSSINGS

# WETLAND CROSSING ECONOMICS

- Assume \$40/ac (ave low quality cash rent in Eastern NE)
  - Access 9 additional acres (doubles our available acres)
  - Cost to build (inc labor) ~ \$7/linear ft
  - Return on investment ~ 5 years
  - Life of boardwalk ~ 20 years
-

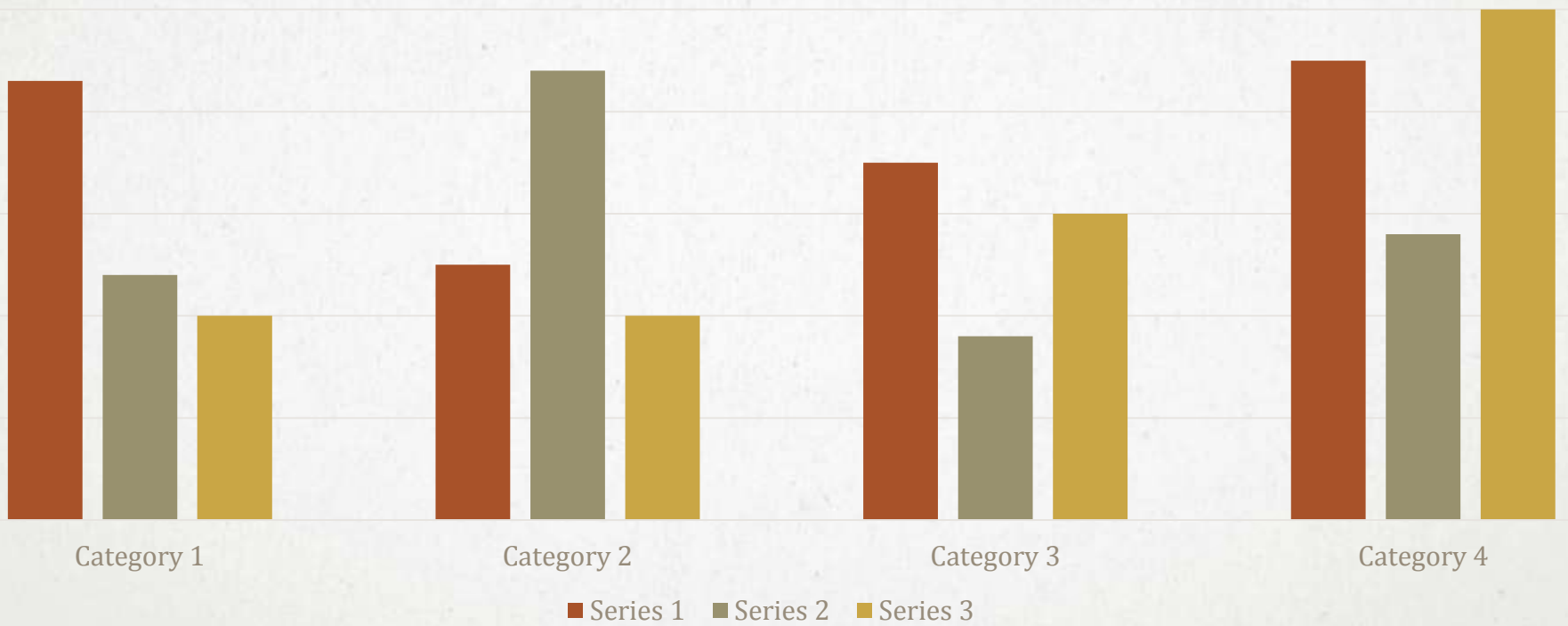


---

# FLOODS



# TITLE AND CONTENT LAYOUT WITH CHART



# TWO CONTENT LAYOUT WITH TABLE

- First bullet point here
- Second bullet point here
- Third bullet point here

|         | Group 1 | Group 2 |
|---------|---------|---------|
| Class 1 | 82      | 95      |
| Class 2 | 76      | 88      |
| Class 3 | 84      | 90      |

# TWO CONTENT LAYOUT WITH SMARTART

- First bullet point here
- Second bullet point here
- Third bullet point here

