



Harry Dawson

Dawson Farms

Hel

Area: 128.15 ac

Farm Imagery

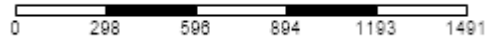
Grower: Harry Dawson
Farm: Dawson Farms
Field: Hel
Number of Fields: 1
Area: 128.15 ac



— Hel (128.15 ac)
— Other Fields



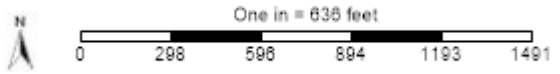
One in = 636 feet



Soil Test Point Sample ID

Grower: Harry Dawson
Farm: Dawson Farms
Field: Hel
Area: 128.15 ac
Event Date(s): 3/16/2021

- Field Boundary
- Soil Test Points



Soil Type

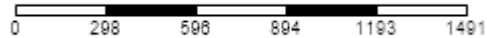
Grower: Harry Dawson
Farm: Dawson Farms
Field: Hel
Area: 128.15 ac



- Field Boundary
- Soil Type
- Clairemont silt loam, occasionally flooded (67.4 ac) (52.6%)
- Mangum clay, occasionally flooded (6.0 ac) (4.7%)
- Tivoli fine sand, 10 to 30 percent slopes (0.3 ac) (0.3%)
- Yahola sandy loam, occasionally flooded (54.4 ac) (42.5%)



One in = 636 feet



Soil Test Results

Grower: Harry Dawson

Farm: Dawson Farms

Field: Hel

Area: 128.15 ac

Event Date(s): 3/16/2021

Min:	7.7	7.1	0.7	5	76	6	95	1,615	93	5	9.2	4	5	0.3	0.4	0.4	2	9	80.2	0.2	1.9	8.4
Max:	8.4	7.1	2.2	37	140	30	355	3,347	364	134	20.1	23	41	1.0	1.1	1.6	3	33	88.8	4.2	4.5	15.1
Avg:	8.0	7.1	1.3	14	103	12	169	2,327	172	14	13.6	12	13	0.5	0.8	0.7	2	18	86.0	0.4	3.2	10.5

Sample ID	pH	BpH	OM	P Bray 1	P Bray 2	P Olsen	K	Ca	Mg	Na	CEC	NO3-N lbs	S ppm	Zn	B	Cu	Mn	Fe	%Ca	%Na	%K	%Mg
1	7.7	7.1	1.0	15	85	11	95	1,669	114	5	9.6	7	5	0.3	0.4	0.5	3	20	87.4	0.2	2.5	9.9
2	7.8	7.1	1.2	5	86	10	107	2,534	154	11	14.3	16	14	0.3	0.8	0.6	2	20	88.8	0.3	1.9	9.0
3	7.8	7.1	0.8	15	105	9	113	2,224	146	8	12.7	5	8	0.4	0.6	0.5	2	19	87.8	0.3	2.3	9.6
4	7.8	7.1	1.9	10	115	10	158	3,114	217	12	17.8	4	14	0.4	1.0	0.9	2	23	87.2	0.3	2.3	10.2
5	7.8	7.1	1.5	27	108	15	185	1,924	183	5	11.6	11	6	0.6	0.8	0.7	2	21	82.6	0.2	4.1	13.1
6	7.8	7.1	1.7	23	116	16	202	2,335	226	8	14.1	14	9	0.7	1.0	0.9	3	25	82.7	0.2	3.7	13.4
7	7.8	7.1	2.2	37	140	30	355	3,228	364	10	20.1	9	12	1.0	1.0	1.6	3	33	80.2	0.2	4.5	15.1
8	7.9	7.1	1.2	16	89	10	118	1,769	143	7	10.4	5	7	0.4	0.5	0.5	2	9	85.3	0.3	2.9	11.5
9	7.9	7.1	0.8	12	100	22	122	1,926	143	6	11.2	5	6	0.4	0.6	0.5	2	9	86.4	0.2	2.8	10.6
10	7.9	7.1	1.1	11	84	14	104	1,753	105	7	9.9	7	7	0.3	0.4	0.4	2	11	88.2	0.3	2.7	8.8
11	7.9	7.1	1.3	11	99	10	166	2,763	211	10	16.0	13	13	0.4	1.0	0.9	2	21	86.0	0.3	2.7	11.0
12	7.8	7.1	1.5	13	104	13	206	2,490	221	12	14.9	18	14	0.5	0.9	0.9	2	22	83.7	0.4	3.5	12.4
13	7.8	7.1	1.5	13	120	12	198	2,603	220	10	15.4	22	12	0.5	0.9	0.9	2	20	84.5	0.3	3.3	11.9
14	7.8	7.1	1.4	25	136	18	251	2,456	222	9	14.8	22	9	0.6	0.8	0.8	2	20	82.9	0.3	4.3	12.5
15	7.8	7.1	1.8	19	132	24	302	2,909	234	7	17.3	14	10	0.6	1.0	1.0	3	17	84.0	0.2	4.5	11.3
16	7.9	7.1	1.4	14	100	13	164	2,081	152	10	12.1	23	12	0.6	0.7	0.6	2	17	85.6	0.4	3.5	10.5
17	7.9	7.1	1.7	14	113	15	157	1,874	147	6	11.0	16	8	0.6	0.7	0.8	2	17	85.0	0.2	3.7	11.1
18	8.0	7.1	1.3	16	110	26	217	2,262	170	10	13.3	9	12	0.6	0.9	0.8	2	18	84.8	0.3	4.2	10.7
19	8.1	7.1	1.4	13	113	11	150	2,545	176	10	14.6	7	10	0.4	0.9	0.6	2	13	87.1	0.3	2.6	10.0
20	8.1	7.1	1.4	12	87	12	165	2,109	162	9	12.4	9	10	0.5	0.7	0.6	3	18	85.4	0.3	3.4	10.9

21	8.2	7.1	0.8	13	96	9	142	1,871	138	8	10.9	5	7	0.4	0.6	0.5	2	11	85.8	0.3	3.3	10.6
22	8.2	7.1	1.7	12	107	9	137	2,340	156	10	13.4	7	12	0.4	0.7	0.7	3	13	87.4	0.3	2.6	9.7
23	8.1	7.1	1.2	8	90	9	150	2,620	191	20	15.2	9	24	0.4	1.1	0.7	2	19	86.4	0.6	2.5	10.5
24	8.0	7.1	1.7	17	116	12	249	2,849	210	13	16.7	20	16	0.5	1.0	0.9	2	17	85.4	0.3	3.8	10.5
25	8.1	7.1	1.4	17	87	13	174	1,774	126	8	10.4	14	8	0.7	0.7	0.7	2	17	85.3	0.3	4.3	10.1
26	8.1	7.1	1.1	12	94	7	139	2,079	132	9	11.9	22	13	0.7	0.7	0.7	2	18	87.5	0.3	3.0	9.2
27	8.0	7.1	1.4	12	99	11	173	2,238	157	14	13.0	13	15	0.5	0.8	0.6	2	15	86.0	0.5	3.4	10.1
28	7.8	7.1	1.5	14	128	11	266	2,673	219	12	15.9	14	10	0.6	0.9	1.0	2	18	83.9	0.3	4.3	11.5
29	7.8	7.1	1.9	15	110	13	312	3,347	285	12	20.0	13	10	0.4	0.9	1.3	3	18	83.8	0.3	4.0	11.9
30	7.8	7.1	1.5	14	125	11	253	3,046	226	17	17.8	16	13	0.5	0.9	1.1	2	17	85.4	0.4	3.6	10.6
31	7.9	7.1	1.3	14	107	13	178	2,388	164	14	13.8	22	13	0.5	0.7	0.8	3	17	86.4	0.4	3.3	9.9
32	8.0	7.1	0.7	12	108	9	151	2,178	147	10	12.5	13	11	0.4	0.6	0.7	2	15	86.8	0.3	3.1	9.8
33	7.9	7.1	1.0	13	82	8	146	2,002	145	21	11.7	20	28	0.6	0.8	0.5	2	15	85.7	0.8	3.2	10.3
34	8.1	7.1	1.0	13	86	9	129	1,766	118	8	10.2	9	10	0.5	0.6	0.4	2	16	86.9	0.3	3.2	9.6
35	8.1	7.1	1.0	14	88	8	129	1,810	121	11	10.4	7	10	0.4	0.5	0.5	2	12	86.6	0.5	3.2	9.7
36	8.0	7.1	0.8	14	76	7	96	1,676	100	7	9.5	5	7	0.5	0.5	0.4	2	21	88.3	0.3	2.6	8.8
37	8.1	7.1	0.9	12	94	9	113	2,093	134	9	11.9	13	10	0.4	0.6	0.5	2	17	87.9	0.3	2.4	9.4
38	8.1	7.1	1.5	11	111	9	165	2,694	180	15	15.5	9	17	0.4	0.7	0.8	2	18	87.2	0.4	2.7	9.7
39	8.0	7.1	1.4	11	106	8	169	2,689	184	16	15.5	16	18	0.4	0.8	0.9	2	23	86.9	0.4	2.8	9.9
40	8.0	7.1	1.5	12	108	8	176	2,725	189	12	15.7	23	13	0.4	0.7	0.8	2	20	86.8	0.3	2.9	10.0
41	7.9	7.1	1.8	33	134	26	253	2,586	226	10	15.5	13	9	0.6	0.7	1.0	2	24	83.3	0.3	4.2	12.2
42	8.1	7.1	1.2	13	110	10	155	2,401	175	11	13.9	11	12	0.4	0.7	0.7	2	16	86.3	0.3	2.9	10.5
43	8.1	7.1	1.5	12	105	7	169	2,501	168	11	14.4	22	13	0.5	0.8	0.7	2	16	87.0	0.3	3.0	9.7
44	8.2	7.1	1.0	8	87	6	116	2,345	167	20	13.5	13	18	0.4	0.9	0.6	2	22	86.9	0.6	2.2	10.3
45	8.3	7.1	0.9	13	82	9	98	1,840	106	9	10.4	5	9	0.3	0.4	0.4	2	12	88.7	0.4	2.4	8.5
46	8.1	7.1	1.0	17	85	13	129	1,615	93	7	9.2	5	6	0.4	0.4	0.4	2	9	87.7	0.3	3.6	8.4
47	8.4	7.1	1.0	12	98	12	112	2,379	146	134	14.0	5	18	0.4	0.9	0.7	2	19	85.0	4.2	2.1	8.7
48	7.9	7.1	1.5	13	110	9	161	2,386	168	31	13.9	14	41	0.5	0.9	0.7	2	21	85.9	1.0	3.0	10.1
49	8.0	7.1	1.1	14	96	10	174	2,453	147	13	14.0	7	14	0.3	0.6	0.8	2	15	87.6	0.4	3.2	8.8
50	8.2	7.1	1.3	9	88	9	103	2,411	168	19	13.8	5	24	0.4	0.9	0.6	2	19	87.4	0.6	1.9	10.1

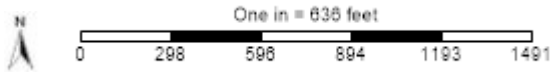
P Olsen Surface

Grower: Harry Dawson
 Farm: Dawson Farms
 Field: Hel
 Area: 128.15 ac
 Event Date(s): 3/16/2021

Season: 2021
 Min: 6.24 ppm
 Avg: 12.36 ppm
 Max: 29.60 ppm



Field Boundary	
P Olsen Surface ppm	
Very Low 0 - 5 ppm	(0.0 ac) (0.0%)
Low 5 - 12 ppm	(76.9 ac) (60.0%)
Medium 12 - 22 ppm	(45.7 ac) (35.7%)
Optimum 22 - 27 ppm	(4.5 ac) (3.5%)
High 27 - 35 ppm	(1.0 ac) (0.8%)
Excess > 35 ppm	(0.0 ac) (0.0%)



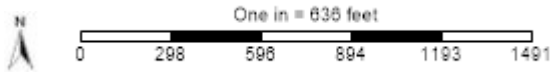
Potassium Surface

Grower: Harry Dawson
 Farm: Dawson Farms
 Field: Hel
 Area: 128.15 ac
 Event Date(s): 3/16/2021

Season: 2021
 Min: 93.49 ppm
 Avg: 171.14 ppm
 Max: 352.58 ppm



Field Boundary	
Potassium Surface ppm	
Very Low	0 - 40 ppm (0.0 ac) (0.0%)
Low	40 - 80 ppm (0.0 ac) (0.0%)
Medium	80 - 150 ppm (50.7 ac) (39.6%)
Optimum	150 - 200 ppm (47.9 ac) (37.4%)
High	200 - 250 ppm (14.4 ac) (11.2%)
Very High	> 250 ppm (15.1 ac) (11.8%)



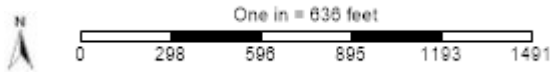
pH Surface

Grower: Harry Dawson
 Farm: Dawson Farms
 Field: Hel
 Area: 128.15 ac
 Event Date(s): 3/16/2021

Season: 2021
 Min: 7.70
 Avg: 7.96
 Max: 8.39



- Field Boundary
- pH Surface
- Excessive Acid 0 - 5 pH (0.0 ac) (0.0%)
- Acidic 5.1 - 5.5 pH (0.0 ac) (0.0%)
- Slightly Acidic 5.5 - 6.1 pH (0.0 ac) (0.0%)
- Grain Optimum 6.1 - 6.6 pH (0.0 ac) (0.0%)
- Alfalfa Optimum 6.6 - 7.5 pH (0.0 ac) (0.0%)
- Alkaline > 7.5 pH (128.1 ac) (100.0%)



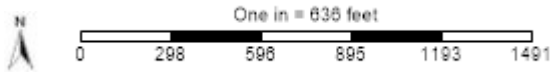
BpH Surface

Grower: Harry Dawson
Farm: Dawson Farms
Field: Hel
Area: 128.15 ac
Event Date(s): 3/16/2021

Season: 2021
Min: 7.10
Avg: 7.10
Max: 7.10



Field Boundary	
BpH Surface	
0.0 - 6.2 (0.0 ac) (0.0%)	
6.2 - 6.4 (0.0 ac) (0.0%)	
6.4 - 6.6 (0.0 ac) (0.0%)	
> 6.6 (128.1 ac) (100.0%)	



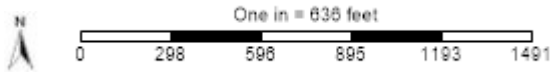
Organic Matter Surface

Grower: Harry Dawson
 Farm: Dawson Farms
 Field: Hel
 Area: 128.15 ac
 Event Date(s): 3/16/2021

Season: 2021
 Min: 0.77 Percent
 Avg: 1.32 Percent
 Max: 2.17 Percent



Field Boundary	
Organic Matter Surface Percent	
Yellow	0.0 - 1.0 (%) (17.7 ac) (13.8%)
Orange	1.0 - 2.0 (109.0 ac) (85.1%)
Red	2.0 - 3.0 (1.5 ac) (1.1%)
Pink	3.0 - 4.0 (0.0 ac) (0.0%)
Purple	4.0 - 5.0 (0.0 ac) (0.0%)
Dark Purple	> 5.0 (0.0 ac) (0.0%)



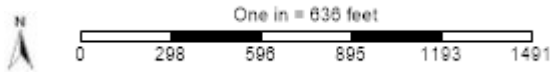
Cation Exchange Capacity Surface

Grower: Harry Dawson
 Farm: Dawson Farms
 Field: Hel
 Area: 128.15 ac
 Event Date(s): 3/16/2021

Season: 2021
 Min: 9.20 meq/100 g
 Avg: 13.65 meq/100 g
 Max: 19.96 meq/100 g



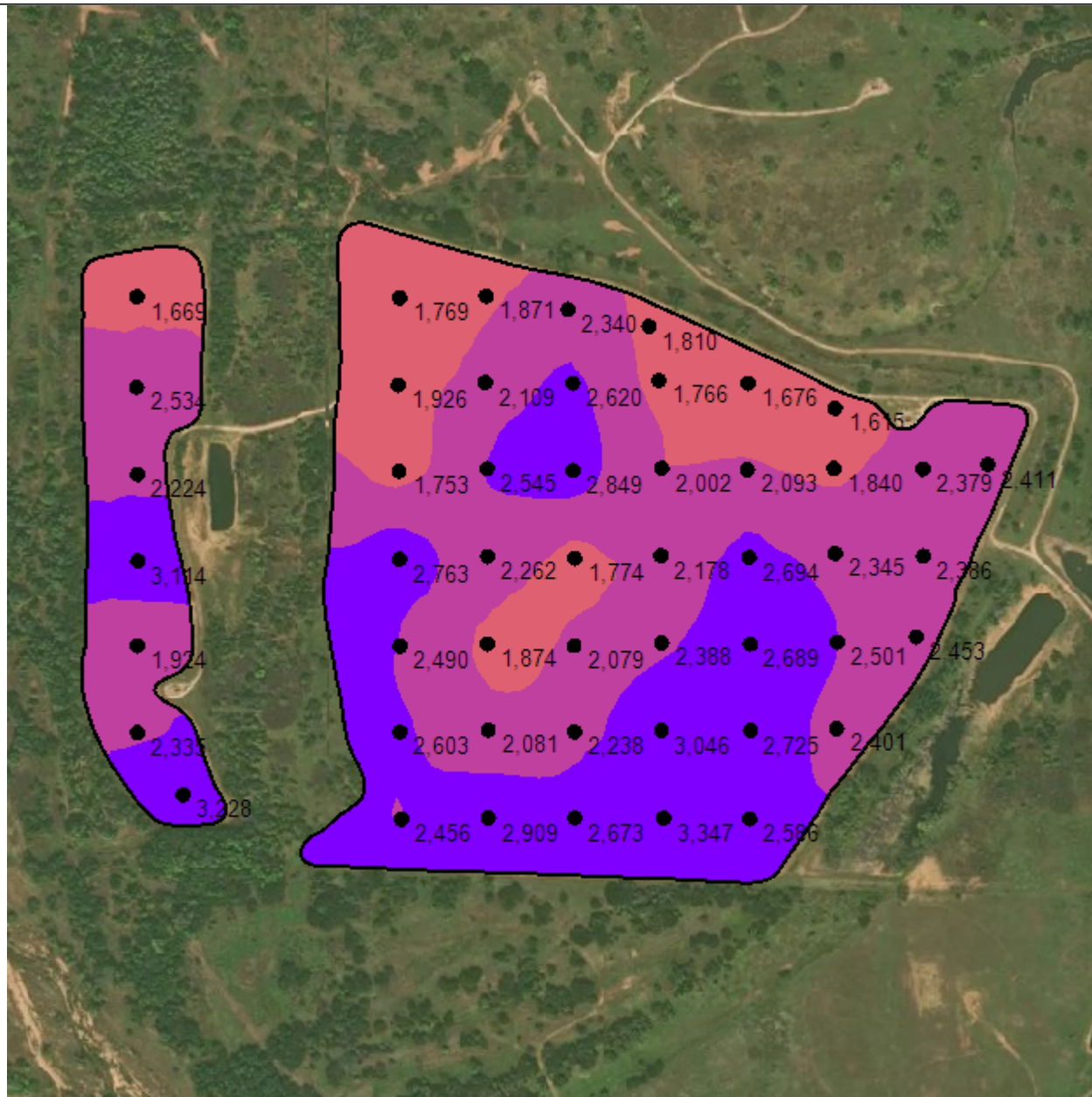
- Field Boundary
- Cation Exchange Capacity Surface meq/100 g
- Very Light 0 - 5 (0.0 ac) (0.0%)
- Light 5 - 10 (5.5 ac) (4.3%)
- Optimum 1 10 - 15 (87.1 ac) (68.0%)
- Optimum 2 15 - 20 (35.5 ac) (27.7%)
- Heavy 20 - 25 (0.0 ac) (0.0%)
- Very Heavy > 25 (0.0 ac) (0.0%)



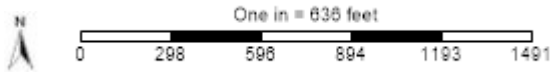
Calcium Surface

Grower: Harry Dawson
 Farm: Dawson Farms
 Field: Hel
 Area: 128.15 ac
 Event Date(s): 3/16/2021

Season: 2021
 Min: 1,619.98 ppm
 Avg: 2,340.30 ppm
 Max: 3,308.68 ppm



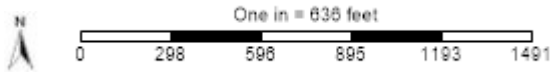
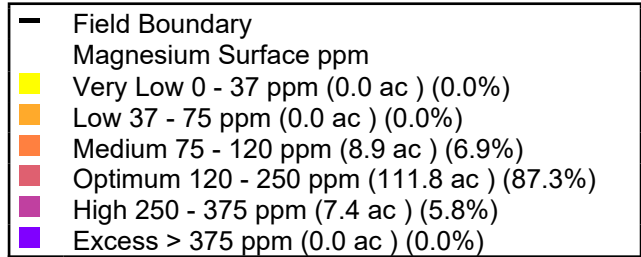
Field Boundary	
Calcium Surface ppm	
Very Low	0 - 500 ppm (0.0 ac) (0.0%)
Low	500 - 1000 ppm (0.0 ac) (0.0%)
Medium	1000 - 1500 ppm (0.0 ac) (0.0%)
Optimum	1500 - 2000 ppm (26.6 ac) (20.7%)
High	2000 - 2500 ppm (58.7 ac) (45.8%)
Very High	> 2500 ppm (42.8 ac) (33.4%)



Magnesium Surface

Grower: Harry Dawson
 Farm: Dawson Farms
 Field: Hel
 Area: 128.15 ac
 Event Date(s): 3/16/2021

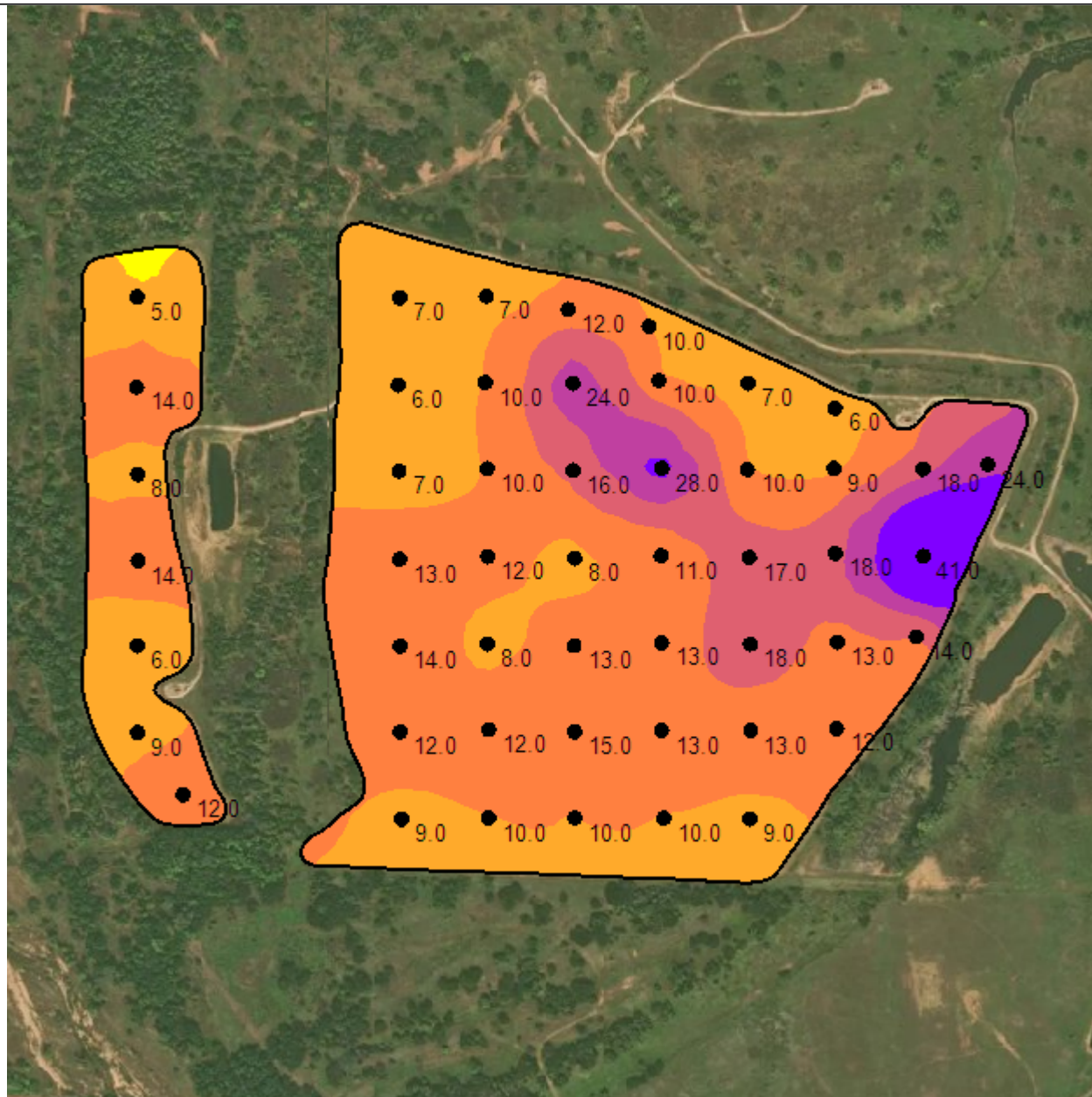
Season: 2021
 Min: 93.53 ppm
 Avg: 174.38 ppm
 Max: 359.78 ppm



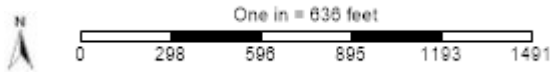
Sulfur - ppm

Grower: Harry Dawson
 Farm: Dawson Farms
 Field: Hel
 Area: 128.15 ac
 Event Date(s): 3/16/2021

Season: 2021
 Min: 4.73 ppm
 Avg: 12.29 ppm
 Max: 39.34 ppm



- Field Boundary
- Sulfur Surface ppm
- Very Low 0 - 5 ppm (0.6 ac) (0.4%)
- Low 5 - 10 ppm (42.3 ac) (33.0%)
- Medium 10 - 15 ppm (61.4 ac) (47.9%)
- Optimum 15 - 20 ppm (14.6 ac) (11.4%)
- High 20 - 25 ppm (5.8 ac) (4.5%)
- Very High > 25 ppm (3.5 ac) (2.7%)



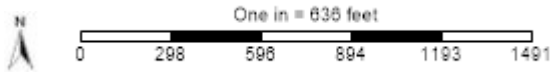
Zinc Surface

Grower: Harry Dawson
 Farm: Dawson Farms
 Field: Hel
 Area: 128.15 ac
 Event Date(s): 3/16/2021

Season: 2021
 Min: 0.30 ppm
 Avg: 0.48 ppm
 Max: 0.98 ppm



Field Boundary	
Zinc Surface ppm	
Very Low	0 - 0.5 ppm (81.5 ac) (63.6%)
Low	0.5 - 1.0 ppm (46.6 ac) (36.4%)
Medium	1.0 - 2.5 ppm (0.0 ac) (0.0%)
Optimum	2.5 - 4.0 ppm (0.0 ac) (0.0%)
High	4.0 - 6.0 ppm (0.0 ac) (0.0%)
Very High	> 6.0 ppm (0.0 ac) (0.0%)



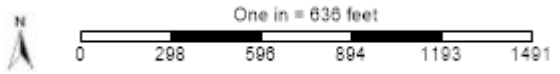
Boron Surface

Grower: Harry Dawson
Farm: Dawson Farms
Field: Hel
Area: 128.15 ac
Event Date(s): 3/16/2021

Season: 2021
Min: 0.39 ppm
Avg: 0.75 ppm
Max: 1.09 ppm



—	Field Boundary
	Boron Surface ppm
■	< 0.3 Very Low (0.0 ac) (0.0%)
■	0.4 - 0.5 Low (9.3 ac) (7.3%)
■	0.6 - 1.2 Medium (118.8 ac) (92.7%)
■	1.3 - 2.0 High (0.0 ac) (0.0%)
■	> 2 Very High (0.0 ac) (0.0%)



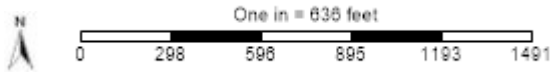
Copper Surface

Grower: Harry Dawson
 Farm: Dawson Farms
 Field: Hel
 Area: 128.15 ac
 Event Date(s): 3/16/2021

Season: 2021
 Min: 0.39 ppm
 Avg: 0.73 ppm
 Max: 1.57 ppm



—	Field Boundary
Copper Surface ppm	
■	< 0.3 Very Low (0.0 ac) (0.0%)
■	0.4 - 0.8 Low (87.1 ac) (68.0%)
■	0.9 - 1.5 Medium (40.4 ac) (31.5%)
■	1.6 - 3.0 High (0.6 ac) (0.5%)
■	> 3 Very High (0.0 ac) (0.0%)



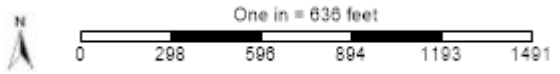
Iron Surface

Grower: Harry Dawson
 Farm: Dawson Farms
 Field: Hel
 Area: 128.15 ac
 Event Date(s): 3/16/2021

Season: 2021
 Min: 9.10 ppm
 Avg: 17.80 ppm
 Max: 32.55 ppm



—	Field Boundary
Iron Surface ppm	
■	< 3 Very Low (0.0 ac) (0.0%)
■	4 - 11 Low (7.9 ac) (6.2%)
■	12 - 24 Medium (116.1 ac) (90.6%)
■	25 - 50 High (4.1 ac) (3.2%)
■	> 50 Very High (0.0 ac) (0.0%)



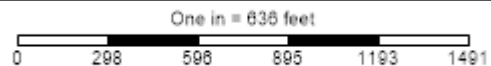
Manganese Surface

Grower: Harry Dawson
 Farm: Dawson Farms
 Field: Hel
 Area: 128.15 ac
 Event Date(s): 3/16/2021

Season: 2021
 Min: 1.95 ppm
 Avg: 2.16 ppm
 Max: 3.06 ppm



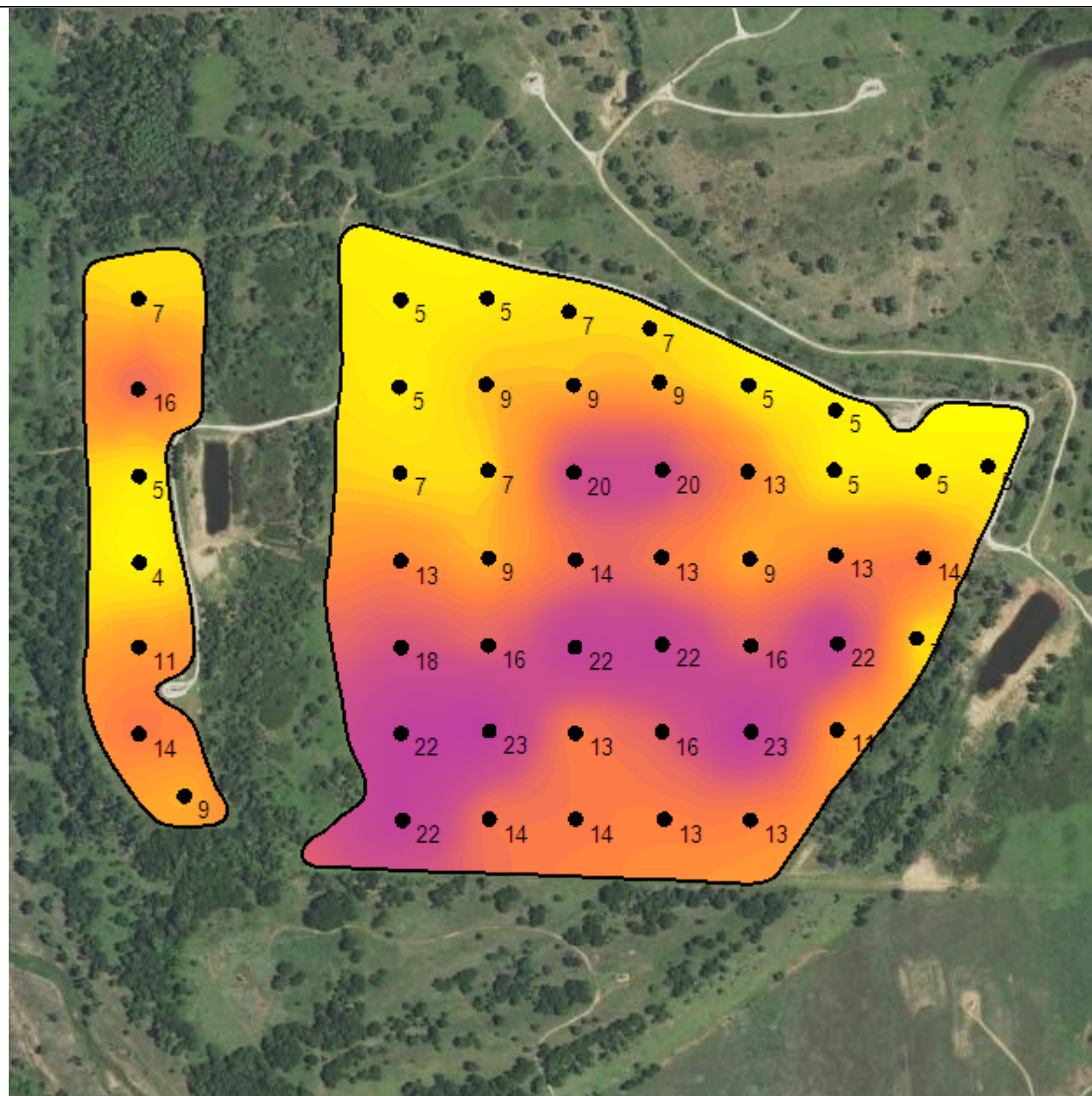
—	Field Boundary
Manganese Surface ppm	
■	< 5 Very Low (128.1 ac) (100.0%)
■	6 - 14 Low (0.0 ac) (0.0%)
■	15 - 29 Medium (0.0 ac) (0.0%)
■	30 - 49 High (0.0 ac) (0.0%)
■	> 50 Very High (0.0 ac) (0.0%)



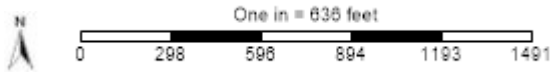
NO3-N - lbs

Grower: Harry Dawson
 Farm: Dawson Farms
 Field: Hel
 Area: 128.15 ac
 Event Date(s): 3/16/2021

Season: 2021
 Min: 3.31 lb/ac
 Avg: 12.29 lb/ac
 Max: 22.59 lb/ac



Field Boundary	
NO3-N lb/ac	
Yellow	3 - 8 (30.8 ac) (24.0%)
Orange	8 - 11 (26.6 ac) (20.7%)
Red-Orange	11 - 15 (30.3 ac) (23.6%)
Red	15 - 18 (20.3 ac) (15.9%)
Purple	18 - 23 (20.1 ac) (15.7%)



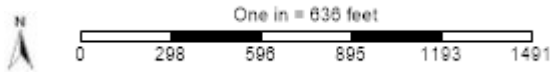
pct Ca

Grower: Harry Dawson
 Farm: Dawson Farms
 Field: Hel
 Area: 128.15 ac
 Event Date(s): 3/16/2021

Season: 2021
 Min: 80.27
 Avg: 85.88
 Max: 88.71



—	Field Boundary
	pct Ca
□	< 50% Low (0.0 ac) (0.0%)
□	50 - 65% Medium (0.0 ac) (0.0%)
□	65 - 70% Optimum (0.0 ac) (0.0%)
■	> 70% High (128.1 ac) (100.0%)



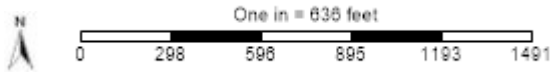
pct K

Grower: Harry Dawson
Farm: Dawson Farms
Field: Hel
Area: 128.15 ac
Event Date(s): 3/16/2021

Season: 2021
Min: 1.94
Avg: 3.17
Max: 4.65



—	Field Boundary
	pct K
□	< 1% Low (0.0 ac) (0.0%)
□	1 - 2% Medium (0.8 ac) (0.6%)
□	2 - 7% Optimum (127.4 ac) (99.4%)
□	> 7% High (0.0 ac) (0.0%)



pct Mg

Grower: Harry Dawson
 Farm: Dawson Farms
 Field: Hel
 Area: 128.15 ac
 Event Date(s): 3/16/2021

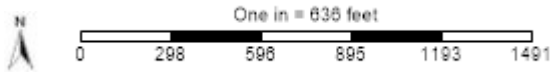
Season: 2021
 Min: 8.41
 Avg: 10.54
 Max: 15.03



— Field Boundary

pct Mg

- < 5% Low (0.0 ac) (0.0%)
- 5 - 10% Medium (53.0 ac) (41.4%)
- 10 - 15% Optimum (75.0 ac) (58.6%)
- > 15% High (0.1 ac) (0.1%)



pct Na

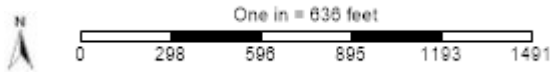
Grower: Harry Dawson
Farm: Dawson Farms
Field: Hel
Area: 128.15 ac
Event Date(s): 3/16/2021

Season: 2021
Min: 0.19
Avg: 0.41
Max: 3.86

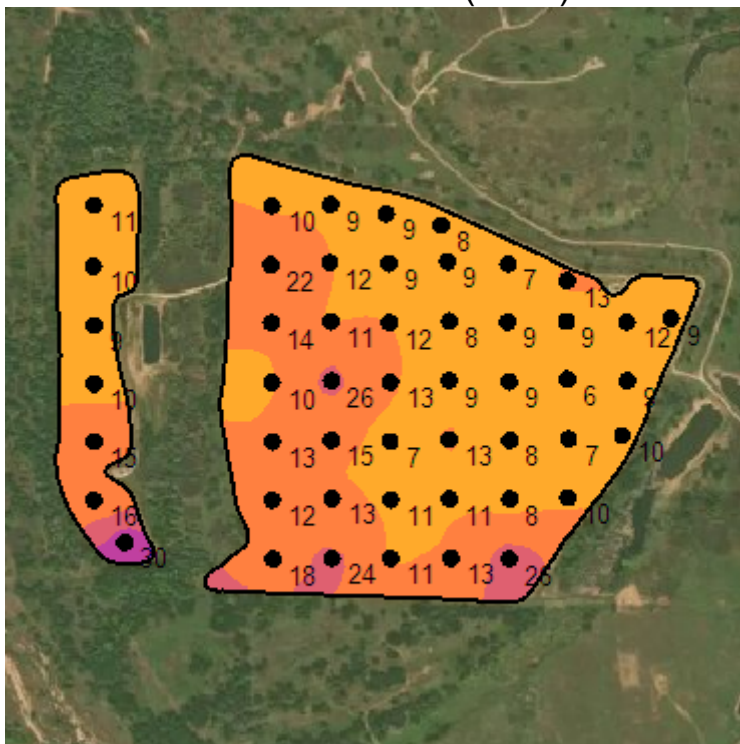


— Field Boundary
pct Na

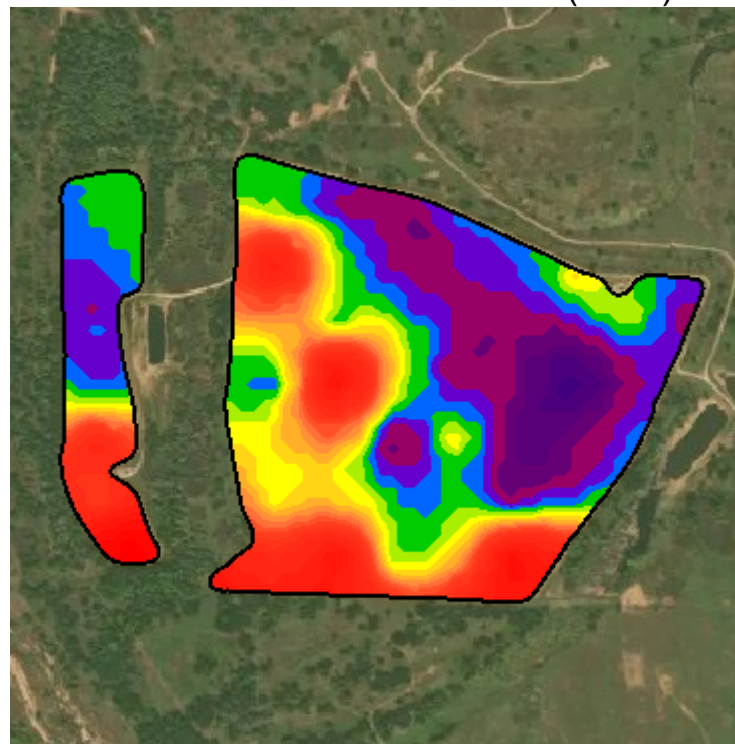
- < 2% Optimum (125.6 ac) (98.0%)
- 2 - 5% High (2.5 ac) (2.0%)
- > 5% Very High (0.0 ac) (0.0%)



P Olsen Surface (2021)



P Product Recommendation (2021)



Grower: Harry Dawson
 Farm: Dawson Farms
 Field: Hel
 Area: 128.15 ac

Event Date(s): 3/16/2021
 Season: 2021
 Min: 6.24 ppm
 Avg: 12.36 ppm
 Max: 29.60 ppm

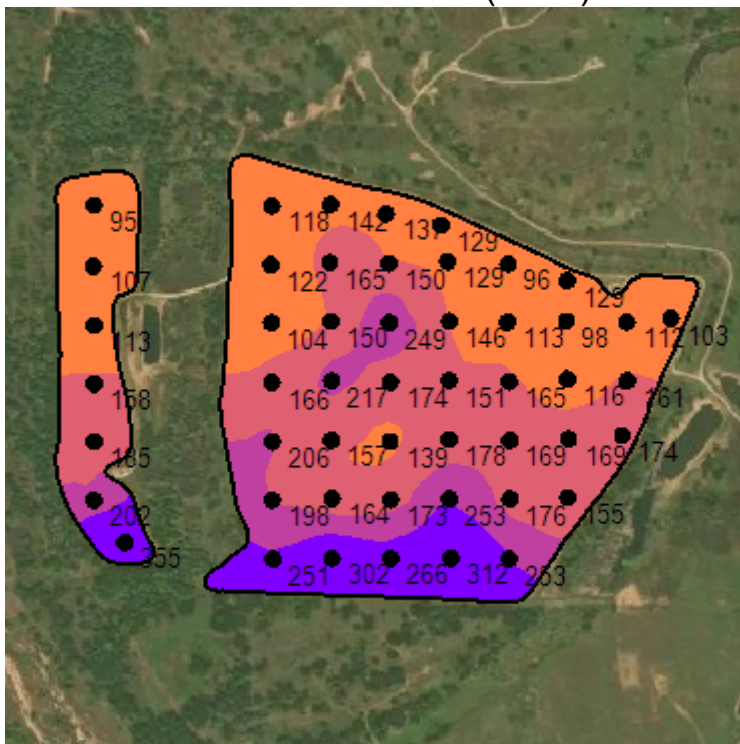
Season: 2021
 Min Rate: 20.00 lb/ac
 Avg Rate: 90.64 lb/ac
 Max Rate: 135.00 lb/ac
 Total Product: 11,615.61 lb
 Applied Area: 128.15 ac
 Product: 100 Pct P205

Order Id: 861743
 Order Task Id: 24091427
 Crop - Year 1: Hemp
 Crop Purpose - Year 1: Milling
 Yield Goal - Year 1: 4
 Task: Midwest Labs - P Rec

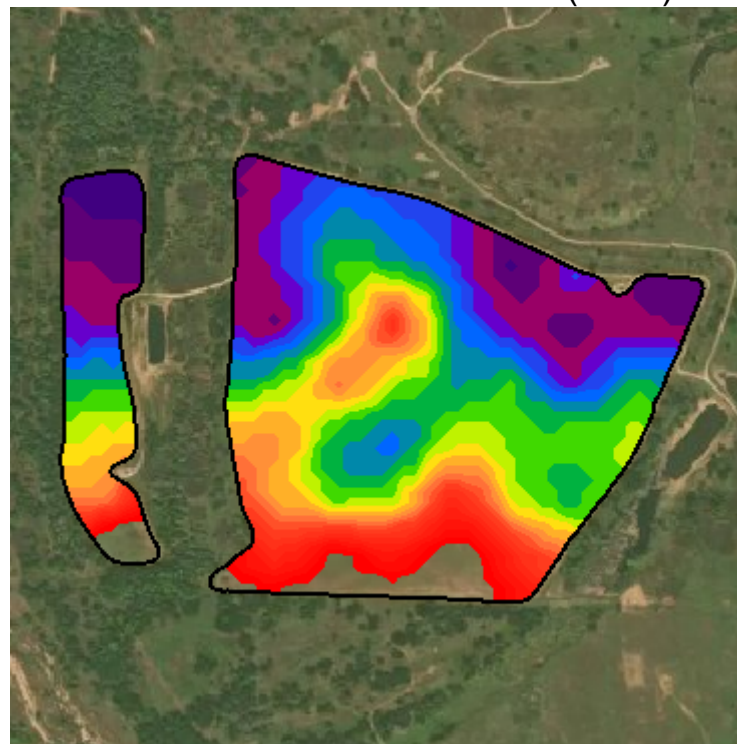
Field Boundary	
P Olsen Surface ppm	
Very Low	0 - 5 ppm (0.0 ac) (0.0%)
Low	5 - 12 ppm (76.9 ac) (60.0%)
Medium	12 - 22 ppm (45.7 ac) (35.7%)
Optimum	22 - 27 ppm (4.5 ac) (3.5%)
High	27 - 35 ppm (1.0 ac) (0.8%)
Excess	> 35 ppm (0.0 ac) (0.0%)

Field Boundary	
P Product Recommendation lb/ac	
20 - 60	(24.1 ac) (18.8%)
65 - 80	(14.5 ac) (11.3%)
85 - 95	(19.2 ac) (15.0%)
100	(15.8 ac) (12.4%)
105	(12.8 ac) (10.0%)
110	(17.1 ac) (13.3%)
115	(14.9 ac) (11.7%)
120 - 135	(9.7 ac) (7.5%)

Potassium Surface (2021)



K Product Recommendation (2021)



Grower: Harry Dawson
 Farm: Dawson Farms
 Field: Hel
 Area: 128.15 ac

Event Date(s): 3/16/2021
 Season: 2021
 Min: 93.49 ppm
 Avg: 171.14 ppm
 Max: 352.58 ppm

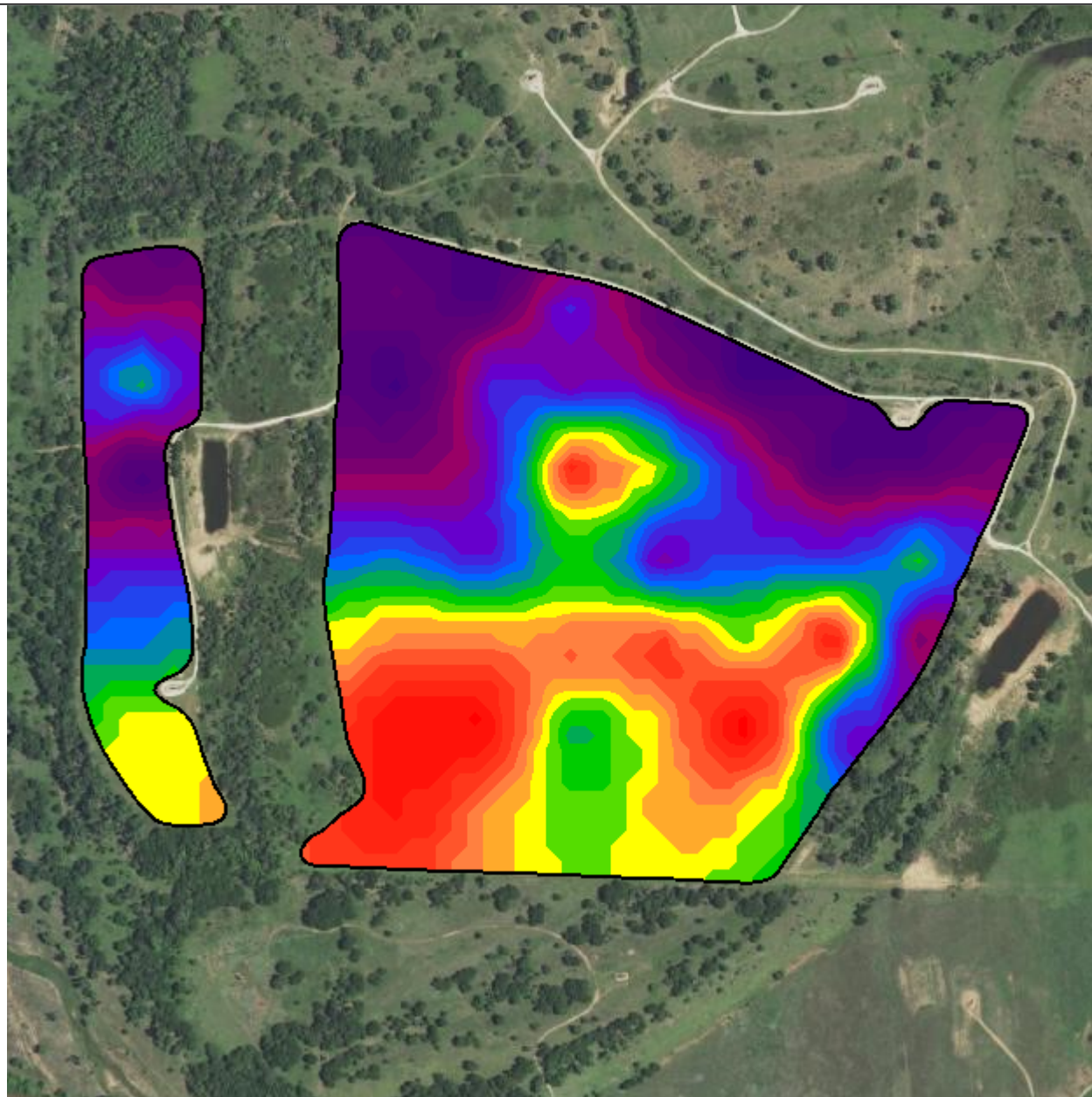
Season: 2021
 Min Rate: 5.00 lb/ac
 Avg Rate: 72.05 lb/ac
 Max Rate: 110.00 lb/ac
 Total Product: 8,721.29 lb
 Applied Area: 121.04 ac
 Product: 100 Pct K20

Order Id: 861743
 Order Task Id: 24091428
 Crop - Year 1: Hemp
 Crop Purpose - Year 1: Milling
 Yield Goal - Year 1: 4
 Task: Midwest Labs - K Rec

Field Boundary	
Potassium Surface ppm	
Very Low	0 - 40 ppm (0.0 ac) (0.0%)
Low	40 - 80 ppm (0.0 ac) (0.0%)
Medium	80 - 150 ppm (50.7 ac) (39.6%)
Optimum	150 - 200 ppm (47.9 ac) (37.4%)
High	200 - 250 ppm (14.4 ac) (11.2%)
Very High	> 250 ppm (15.1 ac) (11.8%)

Field Boundary	
K Product Recommendation lb/ac	
5 - 35	(12.8 ac) (10.0%)
40 - 55	(17.1 ac) (13.3%)
60 - 65	(13.8 ac) (10.8%)
70 - 75	(23.8 ac) (18.6%)
80 - 90	(22.6 ac) (17.7%)
95	(7.2 ac) (5.6%)
100	(13.4 ac) (10.5%)
105 - 110	(10.3 ac) (8.0%)

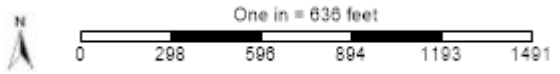
N Product Recommendation



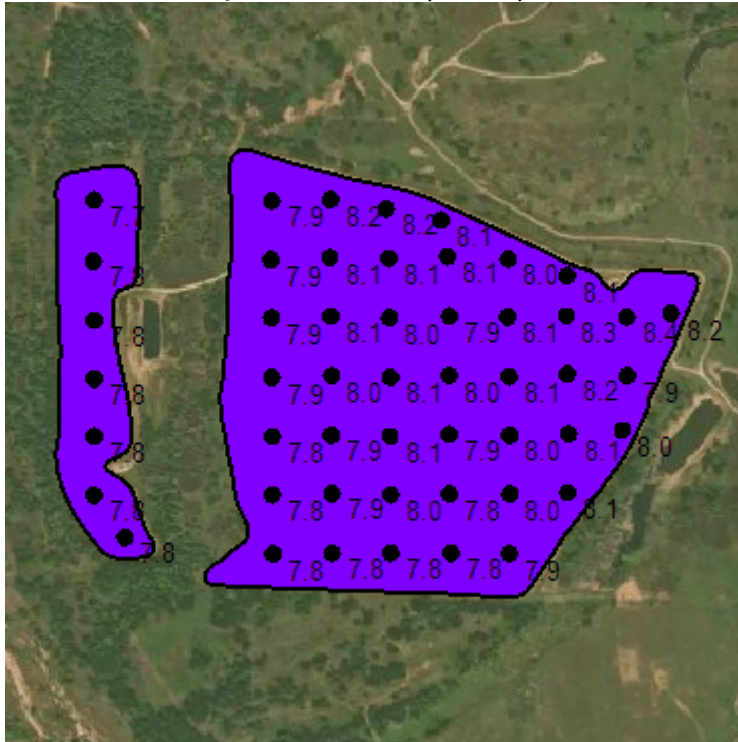
Grower: Harry Dawson
 Farm: Dawson Farms
 Field: Hel
 Area: 128.15 ac

Season: 2021
 Min Rate: 110.00 lb/ac
 Avg Rate: 121.82 lb/ac
 Max Rate: 134.00 lb/ac
 Total Product: 15,610.46 lb
 Applied Area: 128.15 ac
 Product: 100 Pct N
 Order Id: 861743
 Order Task Id: 24091426
 Crop - Year 1: Hemp
 Crop Purpose - Year 1: Milling
 Yield Goal - Year 1: 4
 Previous Crop: None
 N Zone: 6
 Task: Midwest Labs - N Rec

Field Boundary	
N Product Recommendation lb/ac	
Red	110 - 113 (12.8 ac) (10.0%)
Orange	114 - 116 (18.7 ac) (14.6%)
Yellow	117 (10.0 ac) (7.8%)
Green	118 - 120 (17.9 ac) (13.9%)
Blue	121 - 123 (15.3 ac) (12.0%)
Purple	124 - 126 (18.0 ac) (14.1%)
Dark Purple	127 - 129 (13.8 ac) (10.8%)
Black	130 - 134 (21.5 ac) (16.8%)



pH Surface (2021)

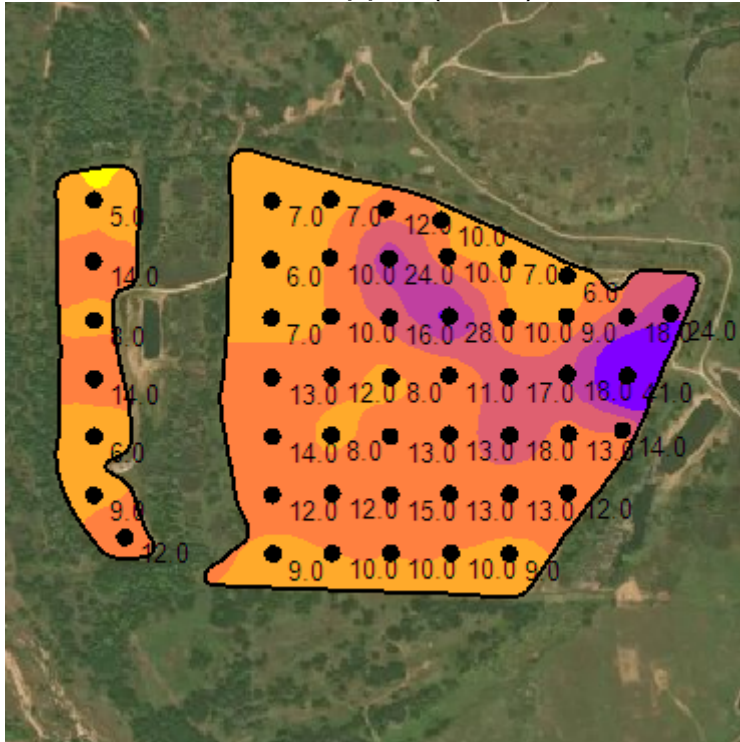


Grower: Harry Dawson
 Farm: Dawson Farms
 Field: Hel
 Area: 128.15 ac

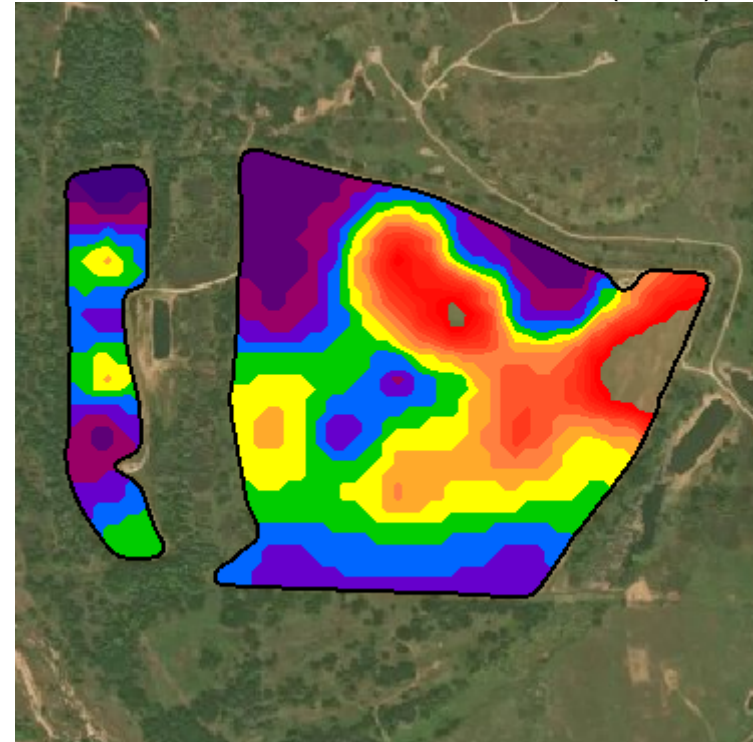
Event Date(s): 3/16/2021
 Season: 2021
 Min: 7.70
 Avg: 7.96
 Max: 8.39

- Field Boundary
- pH Surface
- Excessive Acid 0 - 5 pH (0.0 ac) (0.0%)
- Acidic 5.1 - 5.5 pH (0.0 ac) (0.0%)
- Slightly Acidic 5.5 - 6.1 pH (0.0 ac) (0.0%)
- Grain Optimum 6.1 - 6.6 pH (0.0 ac) (0.0%)
- Alfalfa Optimum 6.6 - 7.5 pH (0.0 ac) (0.0%)
- Alkaline > 7.5 pH (128.1 ac) (100.0%)

Sulfur - ppm (2021)



Sulfur Product Recommendation (2021)



Grower: Harry Dawson
 Farm: Dawson Farms
 Field: Hel
 Area: 128.15 ac

Event Date(s): 3/16/2021
 Season: 2021
 Min: 4.73 ppm
 Avg: 12.29 ppm
 Max: 39.34 ppm

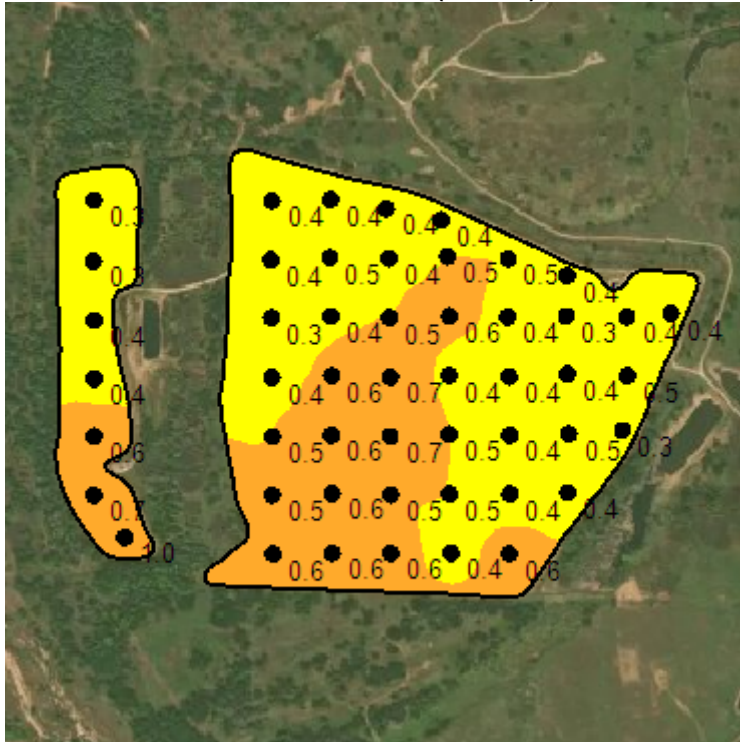
Season: 2021
 Min Rate: 1.00 lb/ac
 Avg Rate: 9.80 lb/ac
 Max Rate: 15.00 lb/ac
 Total Product: 1,208.79 lb
 Applied Area: 123.40 ac
 Product: 100 Pct Sulfur

Order Id: 861743
 Order Task Id: 24091429
 Crop - Year 1: Hemp
 Crop Purpose - Year 1: Milling
 Yield Goal - Year 1: 4
 Task: Midwest Labs - S Rec

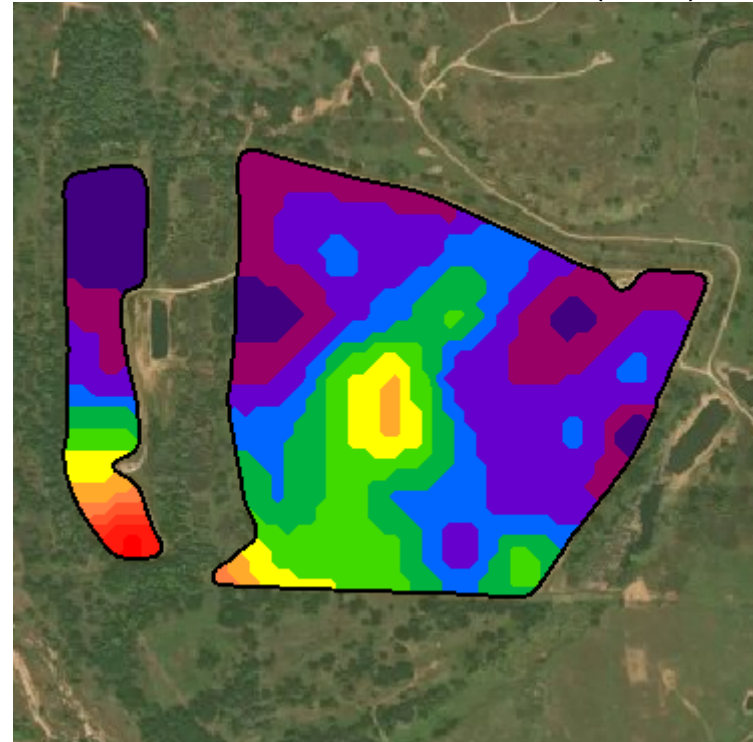
Field Boundary	
Sulfur Surface ppm	
Very Low 0 - 5 ppm (0.6 ac) (0.4%)	
Low 5 - 10 ppm (42.3 ac) (33.0%)	
Medium 10 - 15 ppm (61.4 ac) (47.9%)	
Optimum 15 - 20 ppm (14.6 ac) (11.4%)	
High 20 - 25 ppm (5.8 ac) (4.5%)	
Very High > 25 ppm (3.5 ac) (2.7%)	

Field Boundary	
Sulfur Product Recommendation lb/ac	
1 - 5 (10.2 ac) (8.0%)	
6 - 8 (21.5 ac) (16.8%)	
9 (17.0 ac) (13.3%)	
10 (20.9 ac) (16.3%)	
11 (19.8 ac) (15.4%)	
12 (14.4 ac) (11.2%)	
13 (8.3 ac) (6.5%)	
14 - 15 (11.3 ac) (8.8%)	

Zinc Surface (2021)



Zinc Product Recommendation (2021)



Grower: Harry Dawson
 Farm: Dawson Farms
 Field: Hel
 Area: 128.15 ac

Event Date(s): 3/16/2021
 Season: 2021
 Min: 0.30 ppm
 Avg: 0.48 ppm
 Max: 0.98 ppm

Season: 2021
 Min Rate: 1.80 lb/ac
 Avg Rate: 2.71 lb/ac
 Max Rate: 3.00 lb/ac
 Total Product: 347.68 lb
 Applied Area: 128.15 ac
 Product: 100 Pct Zinc

Order Id: 861743
 Order Task Id: 24091430
 Crop - Year 1: Hemp
 Crop Purpose - Year 1: Milling
 Yield Goal - Year 1: 4
 Task: Midwest Labs - Zn Rec

—	Field Boundary
	Zinc Surface ppm
■	Very Low 0 - 0.5 ppm (81.5 ac) (63.6%)
■	Low 0.5 - 1.0 ppm (46.6 ac) (36.4%)
■	Medium 1.0 - 2.5 ppm (0.0 ac) (0.0%)
■	Optimum 2.5 - 4.0 ppm (0.0 ac) (0.0%)
■	High 4.0 - 6.0 ppm (0.0 ac) (0.0%)
■	Very High > 6.0 ppm (0.0 ac) (0.0%)

—	Field Boundary
	Zinc Product Recommendation lb/ac
■	2 - 2 (1.7 ac) (1.3%)
■	2 - 2 (3.5 ac) (2.7%)
■	2 (6.3 ac) (4.9%)
■	3 - 3 (30.8 ac) (24.0%)
■	3 (19.7 ac) (15.4%)
■	3 (33.7 ac) (26.3%)
■	3 (21.9 ac) (17.1%)
■	3 (10.6 ac) (8.3%)

Product Summary

Season: 2021
 Grower: Harry Dawson
 Farm: Dawson Farms
 Field: Hel
 Area: 128.15 ac

K2O

Recommendation	Rec Acres	Avg Rec Rate	App Acres	Avg App Rate	Total Product
100 Pct K20 861743 24091428 3/25/2021 8:58:02 AM(local) Hemp Milling 4	128.1	68.1 lb/ac	121.0	72.1 lb/ac	8,721.3 lb

Nitrogen

Recommendation	Rec Acres	Avg Rec Rate	App Acres	Avg App Rate	Total Product
100 Pct N 861743 24091426 3/25/2021 8:58:02 AM(local) Hemp Milling 4 None 6	128.1	121.8 lb/ac	128.1	121.8 lb/ac	15,610.5 lb

P2O5

Recommendation	Rec Acres	Avg Rec Rate	App Acres	Avg App Rate	Total Product
100 Pct P2O5 861743 24091427 3/25/2021 8:58:02 AM(local) Hemp Milling 4	128.1	90.6 lb/ac	128.1	90.6 lb/ac	11,615.6 lb

Sulfur

Recommendation	Rec Acres	Avg Rec Rate	App Acres	Avg App Rate	Total Product
100 Pct Sulfur 861743 24091429 3/25/2021 8:58:02 AM(local) Hemp Milling 4	128.1	9.4 lb/ac	123.4	9.8 lb/ac	1,208.8 lb

Zinc

Recommendation	Rec Acres	Avg Rec Rate	App Acres	Avg App Rate	Total Product
100 Pct Zinc 861743 24091430 3/25/2021 8:58:02 AM(local) Hemp Milling 4	128.1	2.7 lb/ac	128.1	2.7 lb/ac	347.7 lb