

Pearling Machine Plans

Housing Assembly

Nigel Tudor
Weatherbury Farm



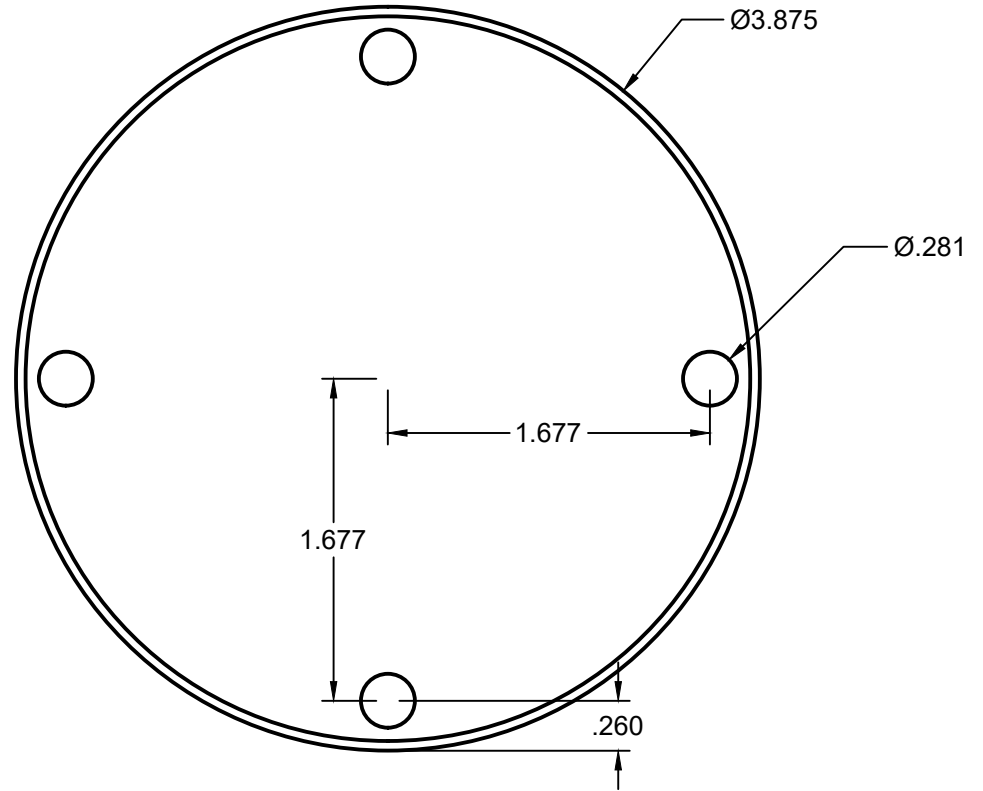
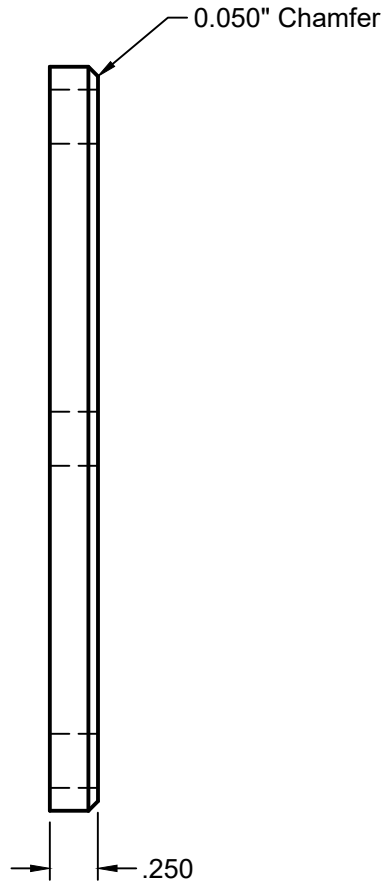
This material is based upon work supported by the National Institute of Food and Agriculture, U.S. Department of Agriculture, through the Northeast Sustainable Agriculture Research and Education program under subaward number FNE19-945. Any opinions, findings, conclusions, or recommendations expressed in this publication are those of the author(s) and do not necessarily reflect the view of the U.S. Department of Agriculture.

Project details found at https://projects.sare.org/sare_project/fne19-945/

Material: 1/4 Plate

Number Required: 1

Process Notes:



Revision Record

Date

Tolerances

(except as noted)
Decimals:
+/- .005 except where noted
Fractional:
+/- 1/32"
Angular:
+/- 1°

Date:

1/26/2022

Part Number:

H14

Scale:

1:2

Title:

Bearing Cover

Drawn By:

NIT

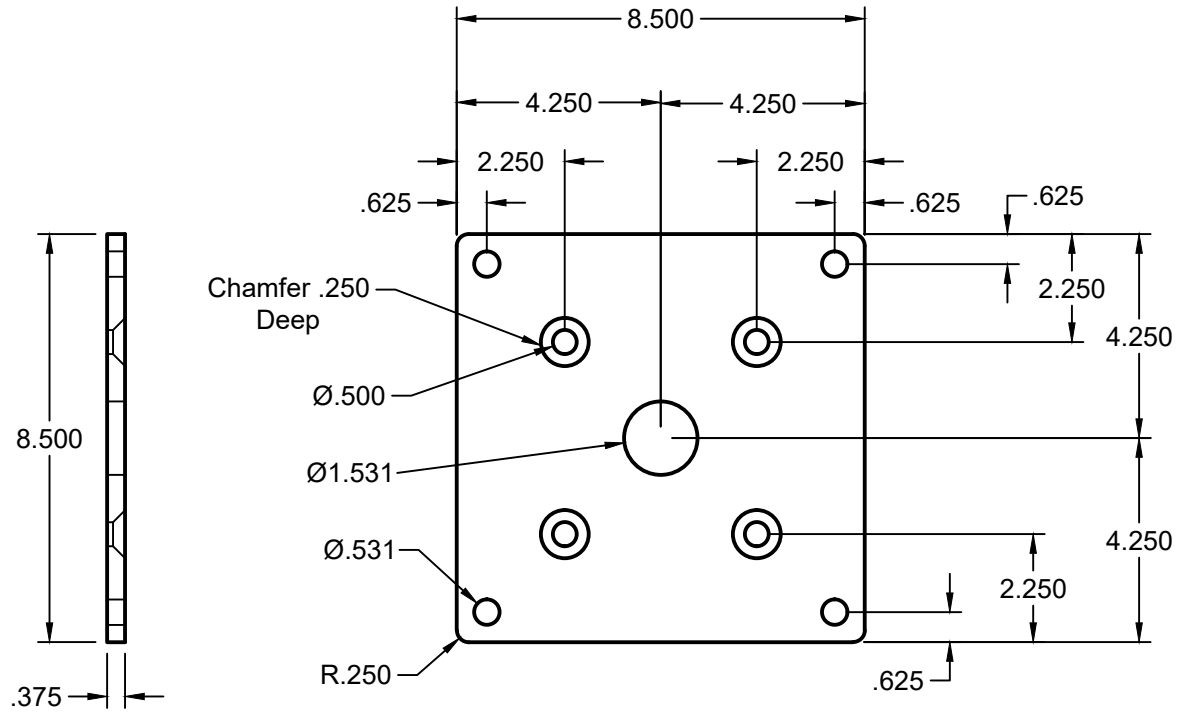
Project Name:

Pearling Machine

Material: 3/8 Plate A36

Number Required:

Process Notes:



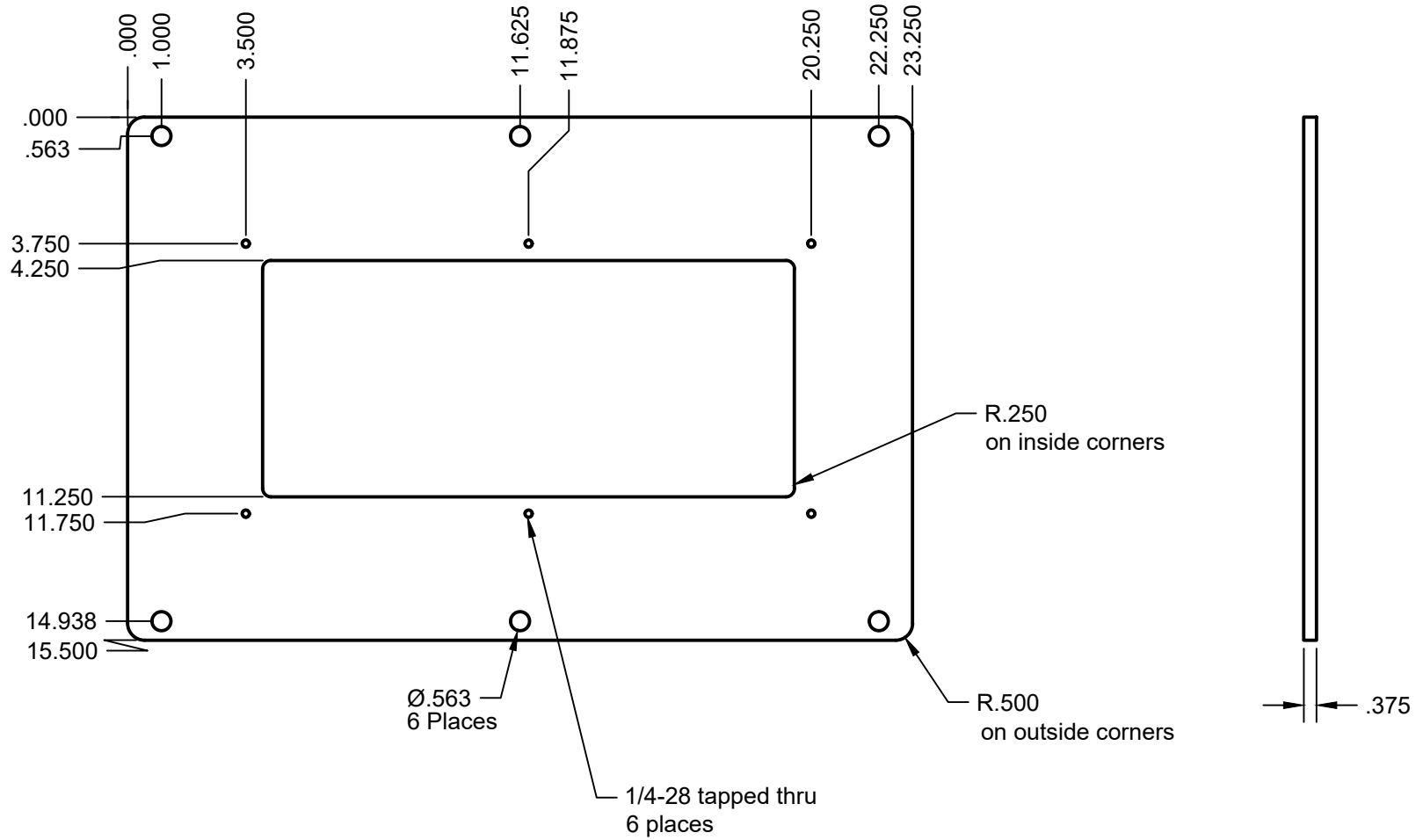
Revision Record	Date	Tolerances	Date:	Part Number:
		(except as noted) Decimals: +/- .005 except where noted Fractional: +/- 1/32 Angular: +/- 1°	1/23/2022	H2
			Scale: 1:4	Title: Bearing Holder
			Drawn By: NIT	Project Name: Pearling Machine

Material: 3/8" HR A36 Plate

Number Required: 1

Process Notes:

Do not Plasma Cut 1/4-28 holes around inside opening

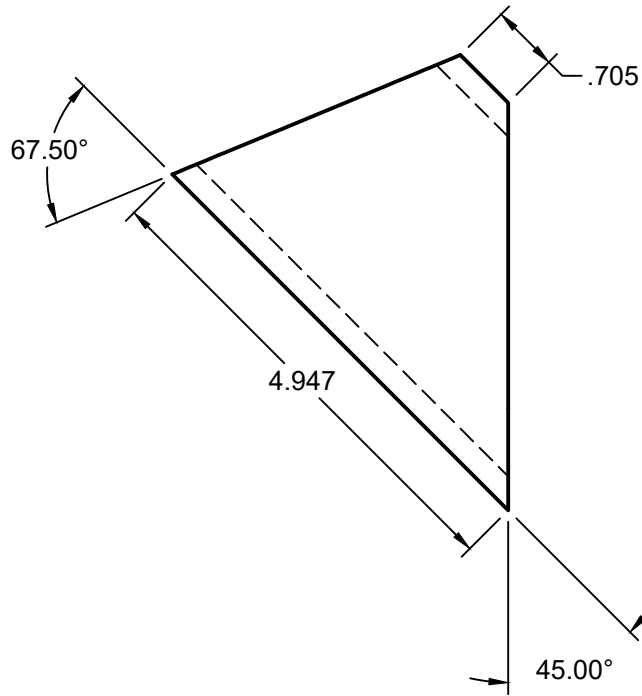


Revision Record	Date	Tolerances	Date:	Part Number:
		(except as noted) Decimals: +/- .005 except where noted Fractional: +/- $\frac{1}{16}$ Angular: +/- 1°	1/25/2020	H1
			Scale:	Title:
			1:5	Chamber Base
			Drawn By:	Project Name:
			NIT	Pearling Machine

Material: 3 x 3 x 0.25 Tube

Number Required: 1

Process Notes:



Revision Record

Date

Tolerances

Date:

1/25/2022

Part Number:

H8

(except as noted)
Decimals:
+/- .005 except where noted
Fractional:
+/- $\frac{1}{32}$
Angular:
+/- 1°

Scale:

1:2

Title:

Discharge Angle Tube

Drawn By:

NIT

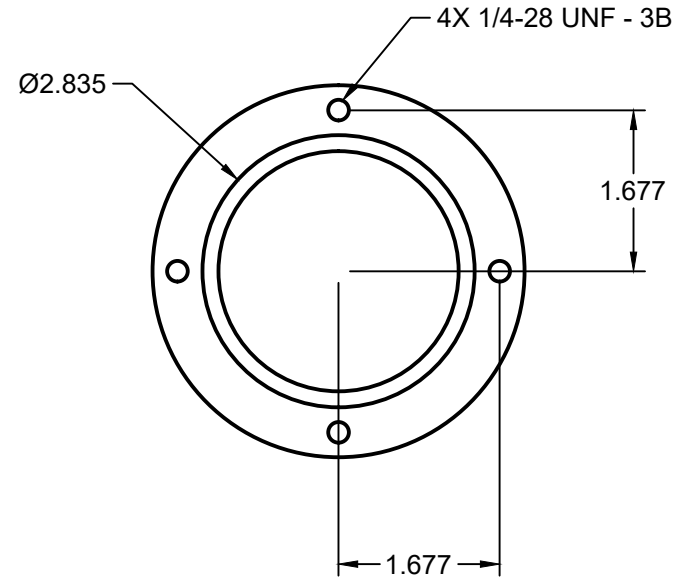
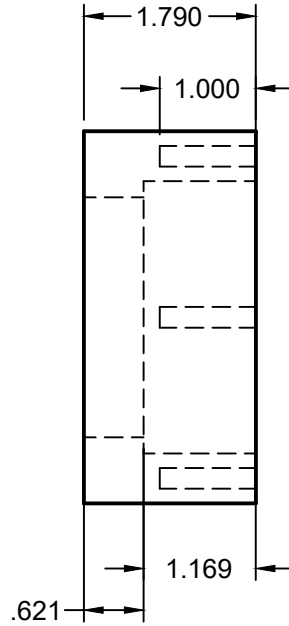
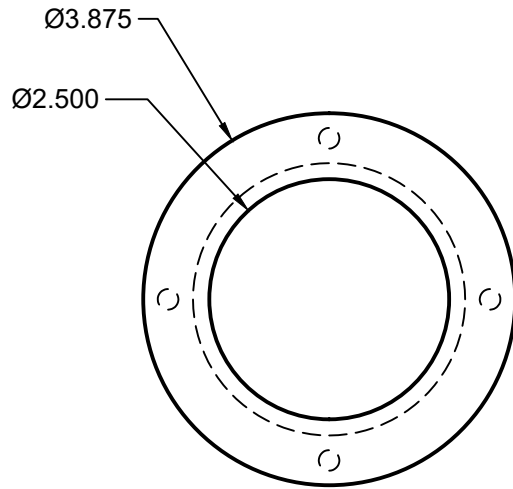
Project Name:

Pearling Machine

Material: 4" OD 1018

Number Required: 1

Process Notes:

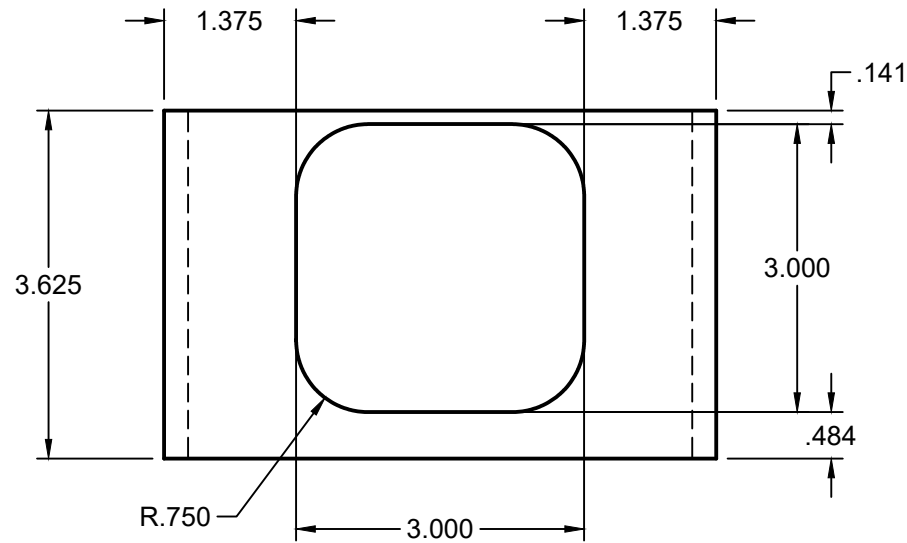
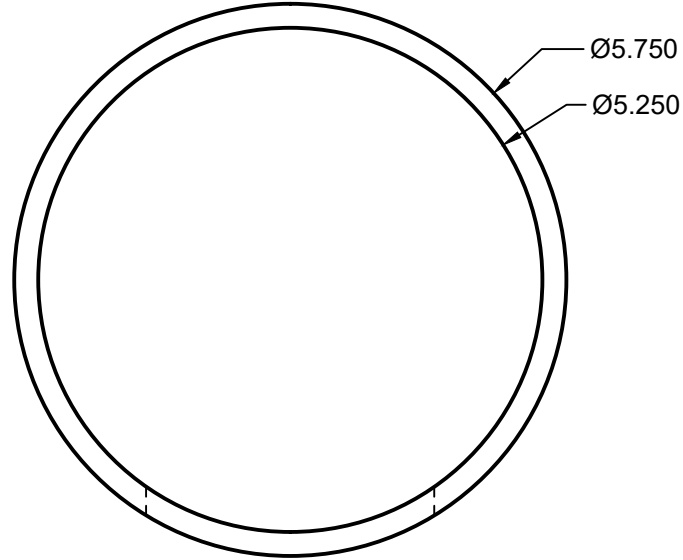
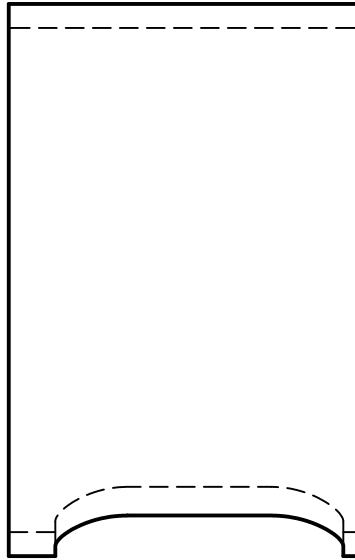


Revision Record	Date	Tolerances	Date:	Part Number:
		(except as noted) Decimals: +/- .005 except where noted Fractional: +/- $\frac{1}{32}$ Angular: +/- 1°	1/26/2022	H13
			Scale:	Title:
			1:2	Discharge End Bearing Holder
			Drawn By:	Project Name:
			NIT	Pearling Machine

Material: 5.75 OD x 5.25 OD x .25 Wall

Number Required: 1

Process Notes:



Revision Record

Date

Tolerances

Date:

1/25/2022

Part Number:

H10

(except as noted)
Decimals:
+/- .005 except where noted
Fractional:
+/- $\frac{1}{16}$
Angular:
+/- 1°

Scale:

1:2

Title:

Discharge End Cylinder Tube

Drawn By:

NIT

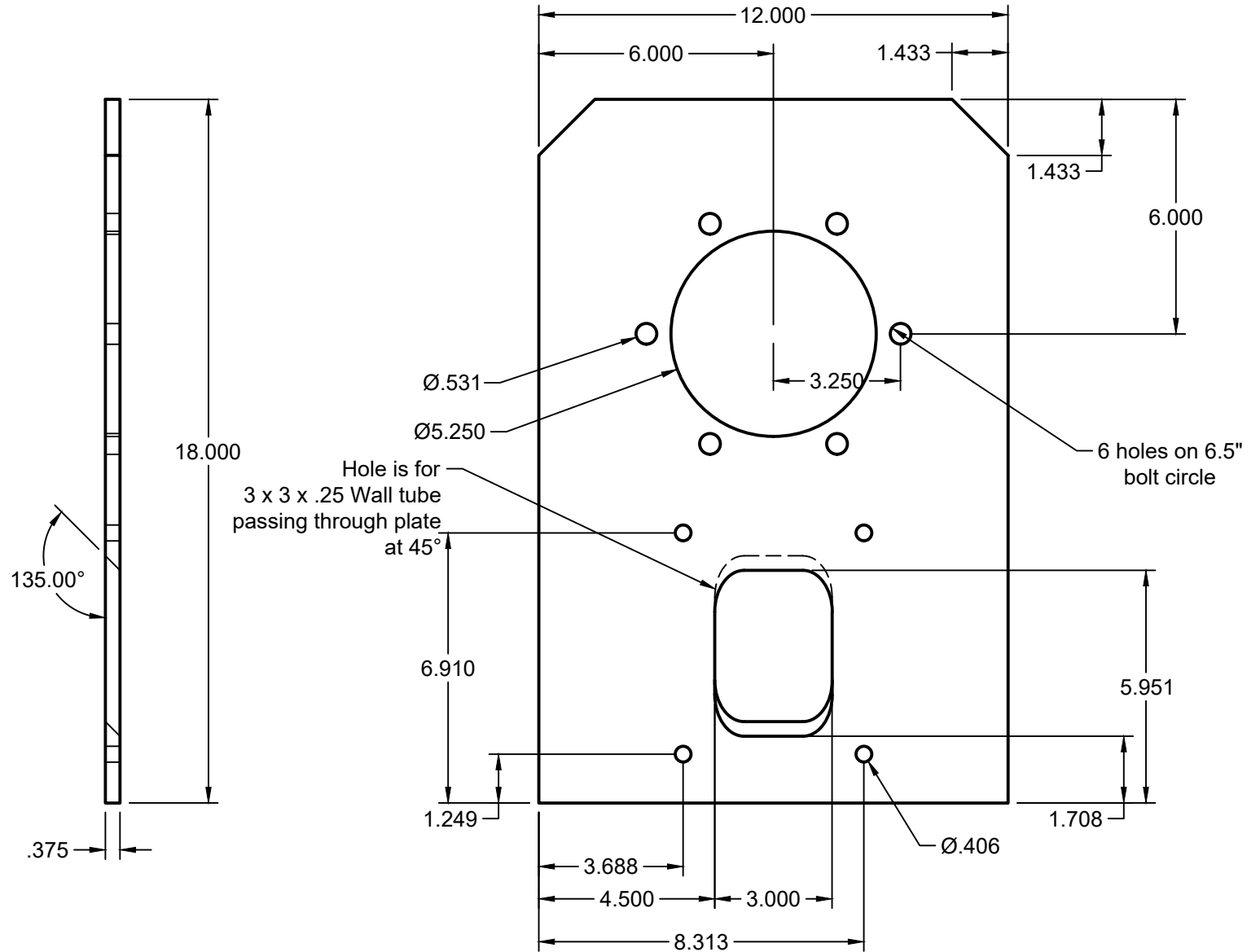
Project Name:

Pearling Machine

Material: 3/8 Plate A36

Number Required: 1

Process Notes:

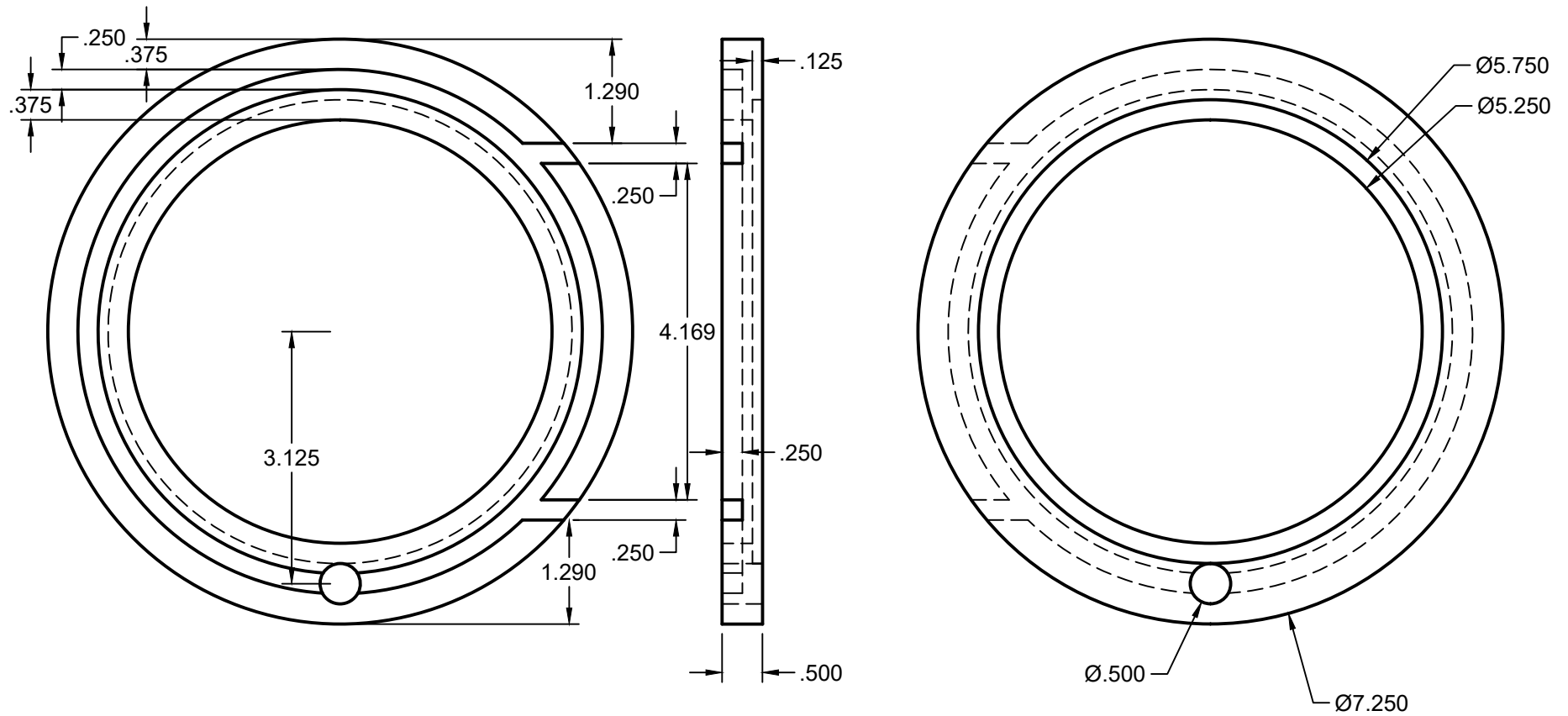


Revision Record	Date	Tolerances	Date:	Part Number:
		(except as noted) Decimals: +/- .005 except where noted Fractional: +/- $\frac{1}{32}$ Angular: +/- 1°	1/25/2022	H7
			Scale:	Title:
			1:4	Discharge End Plate
			Drawn By:	Project Name:
			NIT	Pearling Machine

Material: 1/2 Plate

Number Required: 1

Process Notes:



Revision Record

Date

Tolerances

Date:

1/25/2022

Part Number:

H11

Scale:

1:2

Title:

Discharge End Screen Holder

Drawn By:

NIT

Project Name:

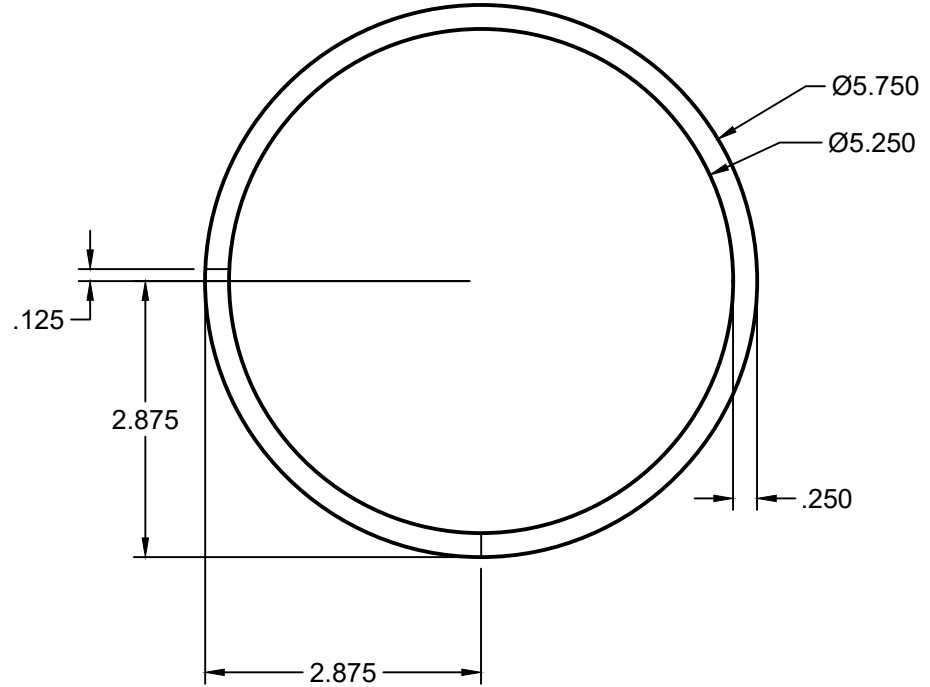
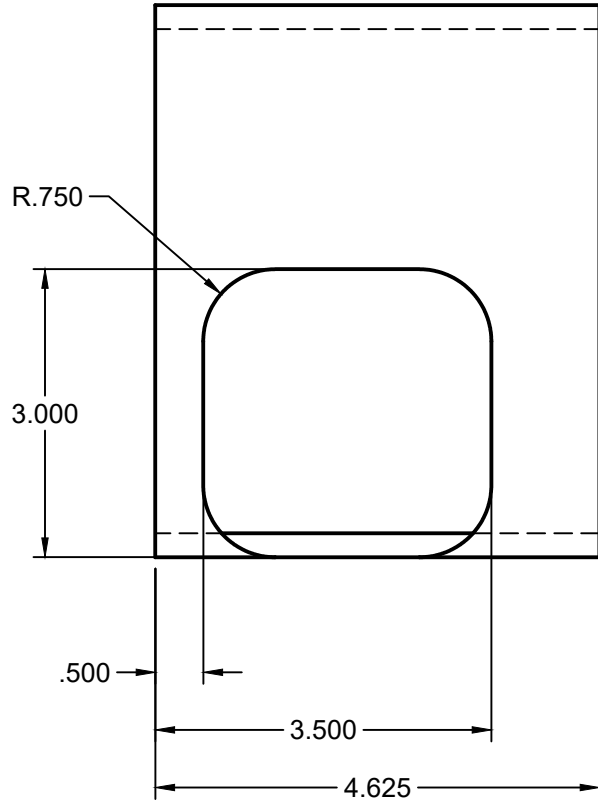
Pearling Machine

(except as noted)
Decimals:
+/- .005 except where noted
Fractional:
+/- 1/16"
Angular:
+/- 1°

Material: 5.75OD x 5.25 ID x .25 Wall DOM Tube

Number Required: 1

Process Notes:



Revision Record

Date

Tolerances

Date:

1/24/2022

Part Number:

H5

(except as noted)
Decimals:
+/- .005 except where noted
Fractional:
+/- $\frac{1}{16}$
Angular:
+/- 1°

Scale:

1:2

Title:

Feed End Cylinder Tube

Drawn By:

NIT

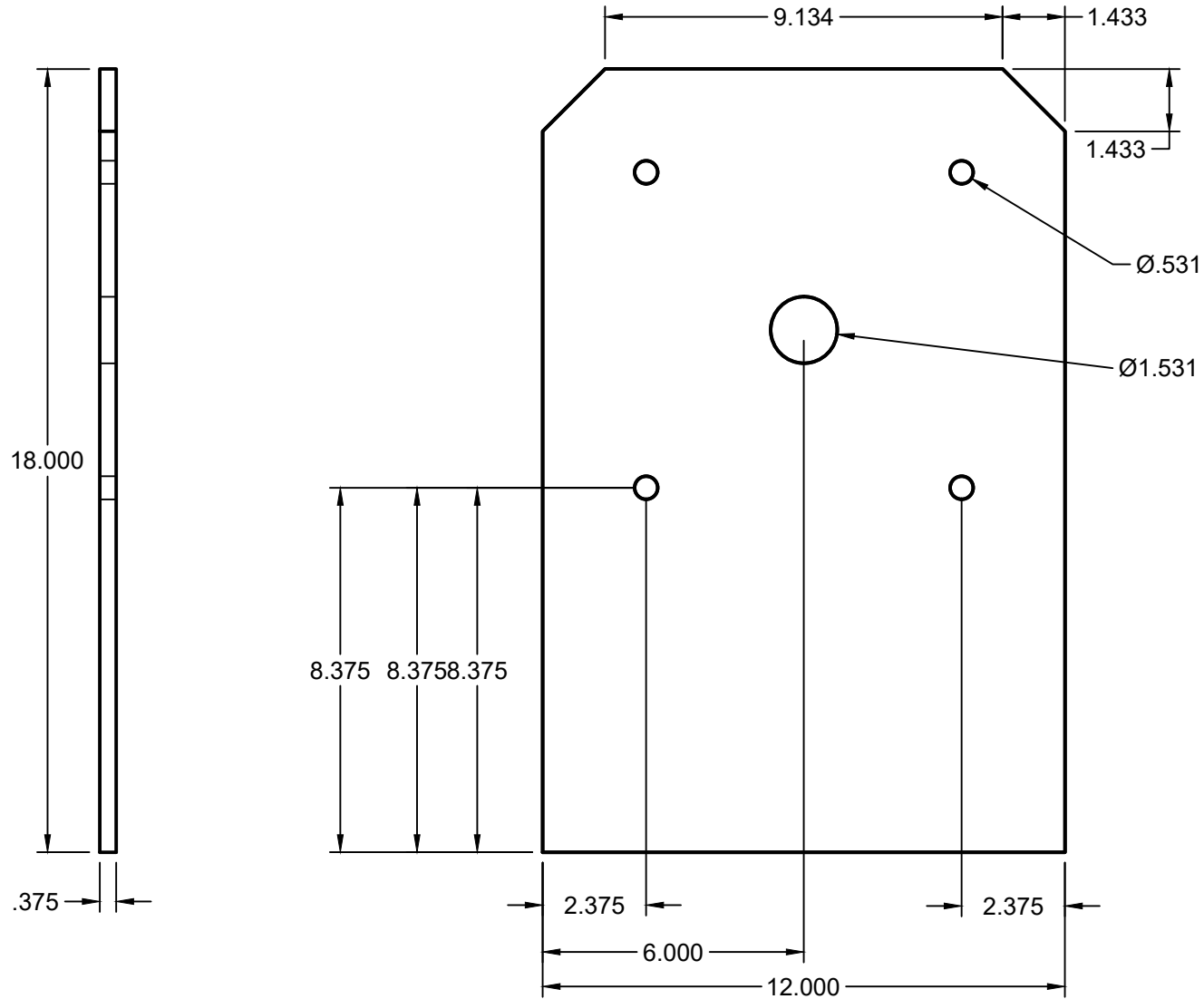
Project Name:

Pearling Machine

Material: 3/8 Plate A36

Number Required: 1

Process Notes:



Revision Record

Date

Tolerances

Date:

1/24/2022

Part Number:

H3

(except as noted)
Decimals:
+/- .005 except where noted
Fractional:
+/- 1/32
Angular:
+/- 1°

Scale:

1:4

Title:

Feed End Plate

Drawn By:

NIT

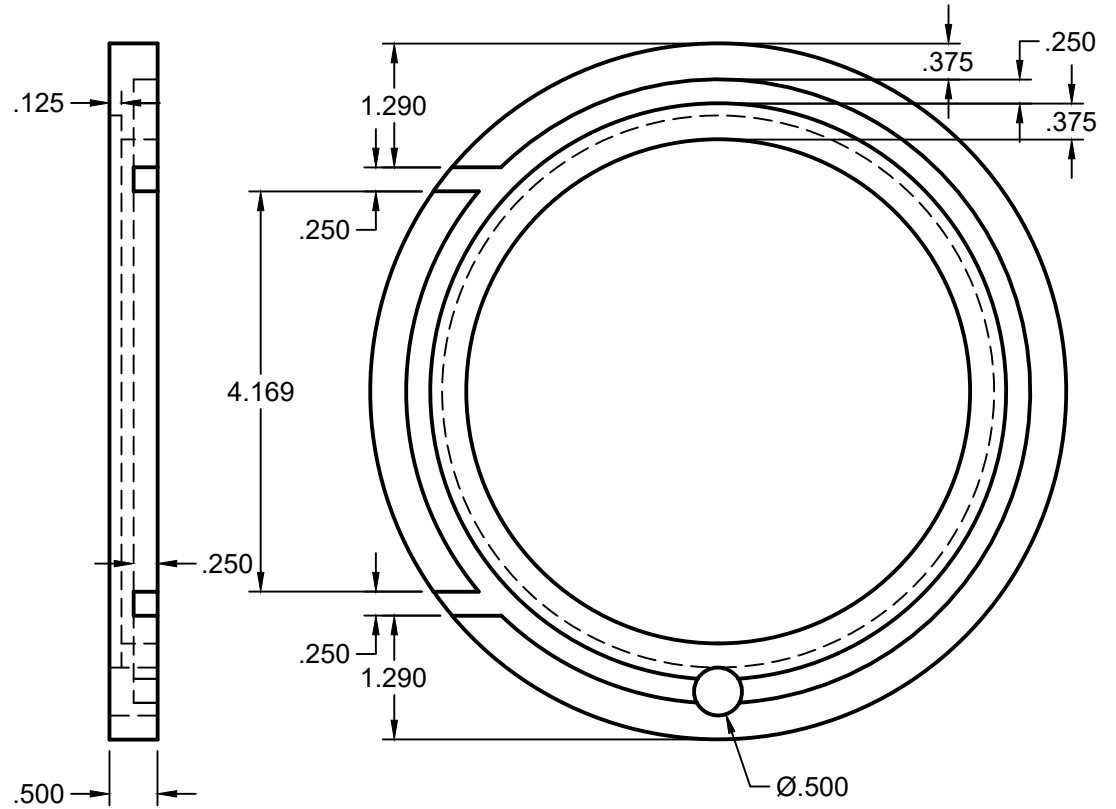
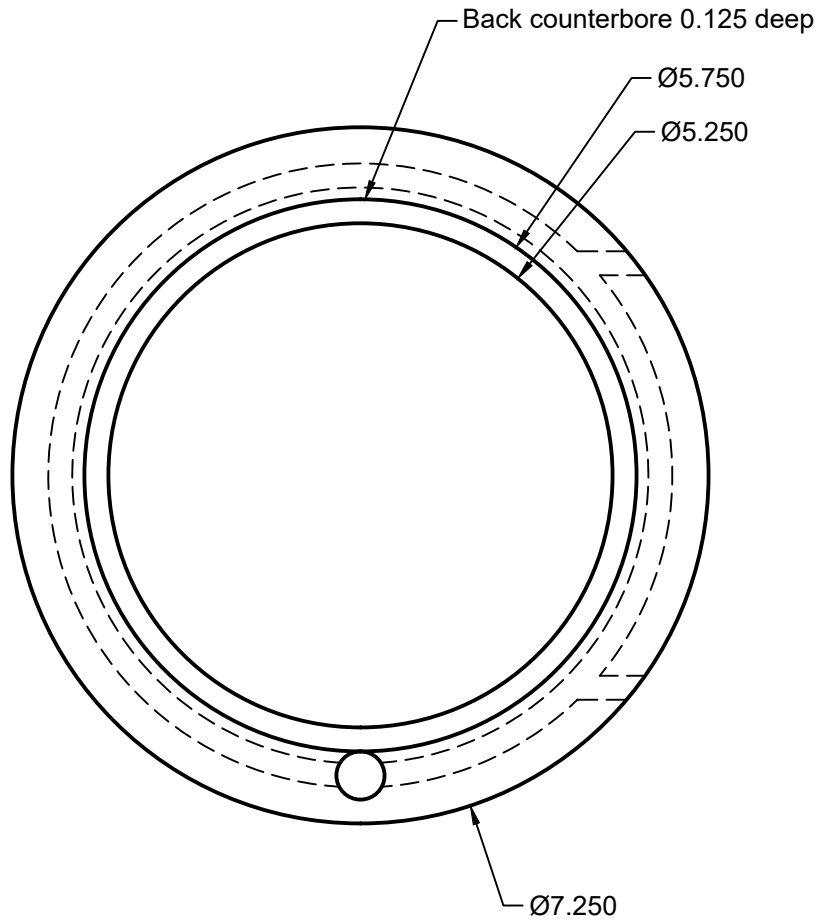
Project Name:

Pearling Machine

Material: 1/2 Plate

Number Required: 1

Process Notes:

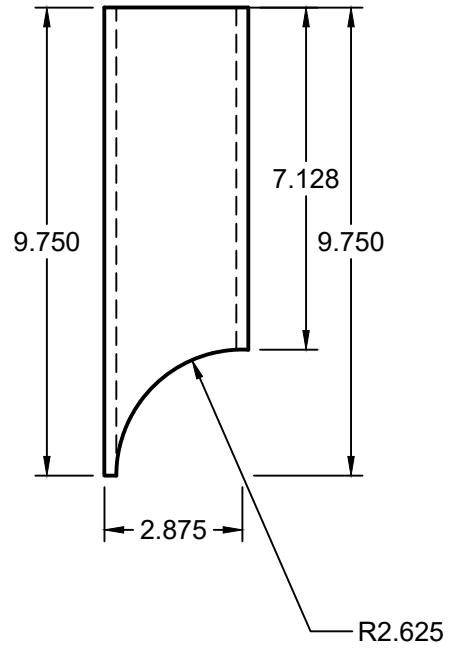
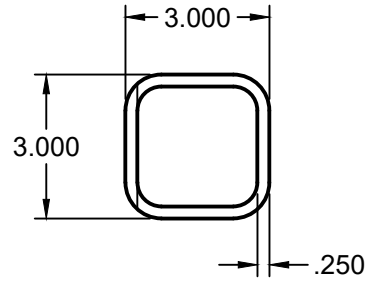


Revision Record	Date	Tolerances	Date:	Part Number:
		(except as noted) Decimals: +/- .005 except where noted Fractional: +/- $\frac{1}{32}$ Angular: +/- 1°	1/24/2022	H6
			Scale:	Title:
			1:2	Feed End Screen Holder
			Drawn By:	Project Name:
			NIT	Pearling Machine

Material: 3 x 3 x .250 Wall Tubing

Number Required: 1

Process Notes:

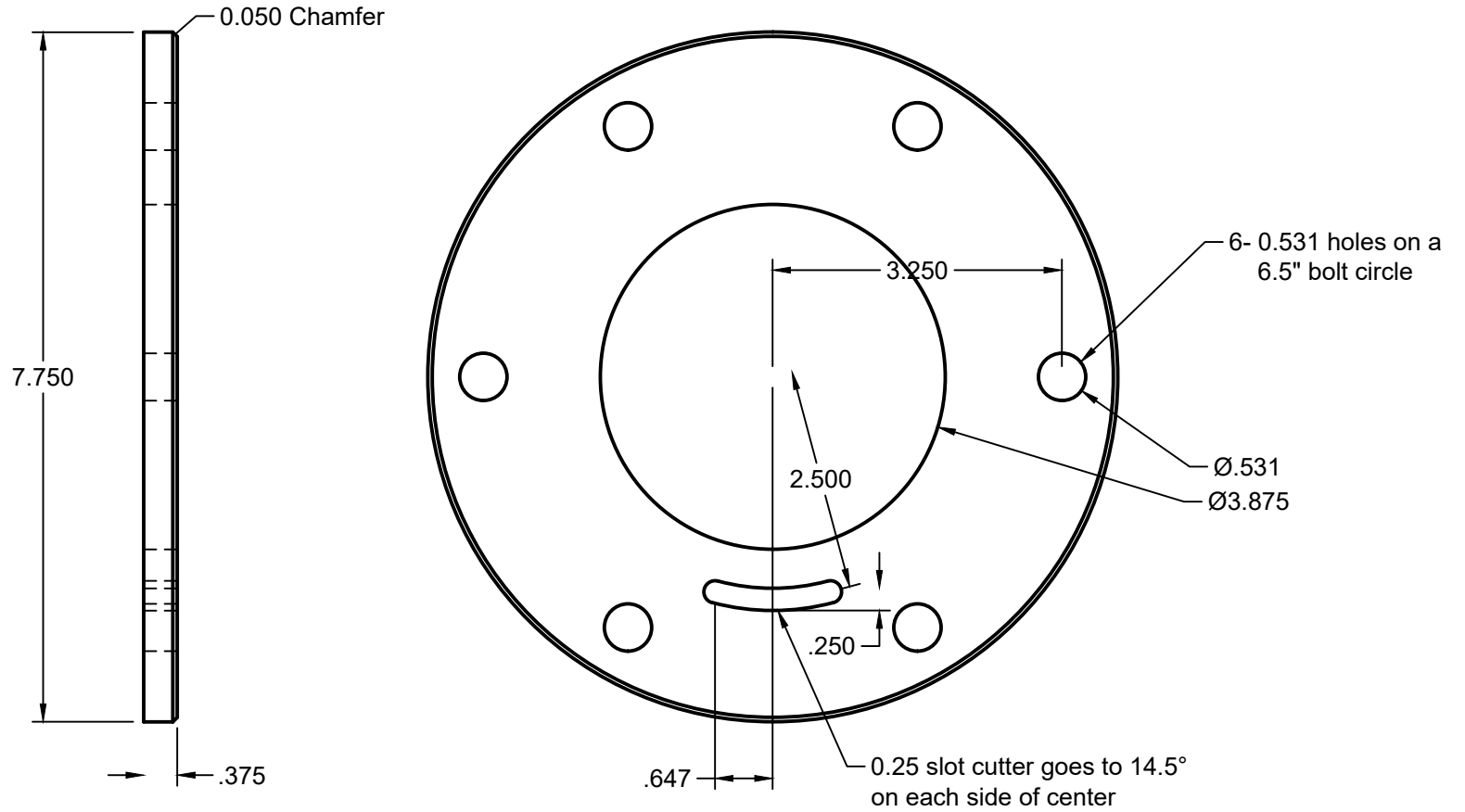


Revision Record	Date	Tolerances	Date:	Part Number:
		(except as noted) Decimals: +/- .005 except where noted Fractional: +/- $\frac{1}{16}$ Angular: +/- 1°	1/24/2022	H4
			Scale: 1:4	Title: Feed Tube
			Drawn By: NIT	Project Name: Pearling Machine

Material: 3/8 Plate

Number Required: 1

Process Notes:



Revision Record

Date

Tolerances

Date:

1/25/2022

Part Number:

H12

(except as noted)
Decimals:
+/- .005 except where noted
Fractional:
+/- 1/32
Angular:
+/- 1°

Scale:

1:2

Title:

Ring of Discharge End Bearing Holder

Drawn By:

NIT

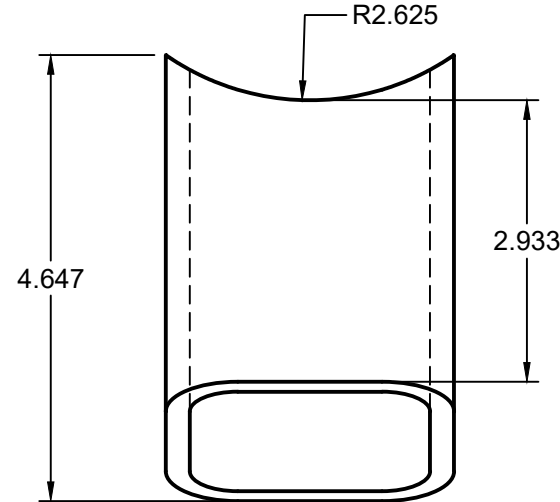
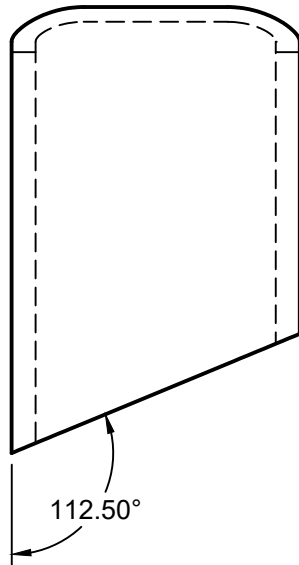
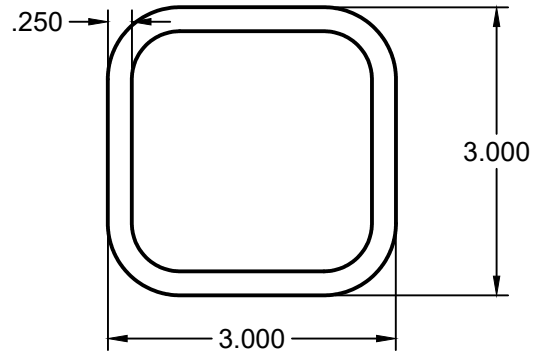
Project Name:

Pearling Machine

Material: 3x 3 x 0.25 Tube

Number Required: 1

Process Notes:



Revision Record	Date	Tolerances	Date:	Part Number:
		(except as noted) Decimals: +/- .005 except where noted Fractional: +/- 1/32 Angular: +/- 1°	1/25/2022	H9
			Scale: 1:2	Title: Vertical Discharge Tube
			Drawn By: NIT	Project Name: Pearling Machine