

field	Manure History (tons) (if yes, it was applied as daily spread)	Spray	Corn Planting Date	Fertilizer Starter sidedress	Corn stage	Interseeding Planting Date, Species, and pounds per acre	Interseeded Growth	Rain Events
Bohart 1	0	6/4/2020 Roundup Resolve Q	6/10	<b>28-0-0</b> <i>80-50-90</i>	V6	7/15 triticale 150, radish 12	some radish mostly bedstraw	0.78" after planting 1.58" month total
HM5	20	6/5/2020 Roundup Resolve Q Medal II ATZ	5/28	<b>4-13-4</b> <i>100-0-0 on July 13</i>	V12	7/14 radish 9-10#/ac	Scattered radish	same
Bohart 2	0	6/4/2020 Roundup Resolve Q	6/10	<b>28-0-0</b> <i>80-50-90</i>	V6	7/15 rye 92, radish 8 (commercial mix)	some radish mostly bedstraw	same
Bohart 6	0	6/4/2020 Roundup Resolve Q	6/10	<b>28-0-0</b> <i>80-50-90</i>	V6	7/15 Rye 92, radish 8	some radish mostly bedstraw	Same
Bohart 4	0	6/4/2020 Roundup Resolve Q	6/10	<b>28-0-0</b> <i>80-50-90</i>	V6	7/15 ryegrass 16, radish 5	some radish mostly bedstraw	same
HM3	20	6/4/2020 Roundup Resolve Q	5/15	<b>7-21-7</b> <i>100-0-0 on July 13</i>	V12	7/23 rye 92, radish 8	Thin radish. Came on late November.	0.16" after planting, 1.58 " total
WH4	20	6/5/2020 Roundup Resolve Q Medal II ATZ	5/27	<b>4-13-4</b> <i>100-0-0 on July 13</i>	R1	8/4 rye 92, radish 8	thin radish	2.29" after planting, 2.89 total
SS2	20	6/17/2020 Roundup Resolve Q	5/18	<b>4-13-4</b> <i>100-0-0 on July 13</i>	R1	8/26 triticale 90, radish 5	Triticale 3 inches	0.06" after planting, 2.89 total
SS4	20	6/17/2020 Roundup Resolve Q	5/18	<b>4-13-4</b> <i>100-0-0 on July 13</i>	R1	8/28 triticale 90, rad5, crimson 2.5, balansa 2.5	Triticale 3 inches	0.05" after planting, 2.89 total
SS1	20	6/17/2020 Roundup Resolve Q	5/27	<b>4-13-4</b> <i>100-0-0 on July 13</i>	harvested	10/2 ryegrass 20 (after CS harvested)	Ryegrass 2.5 inches	3.09 after planting and total

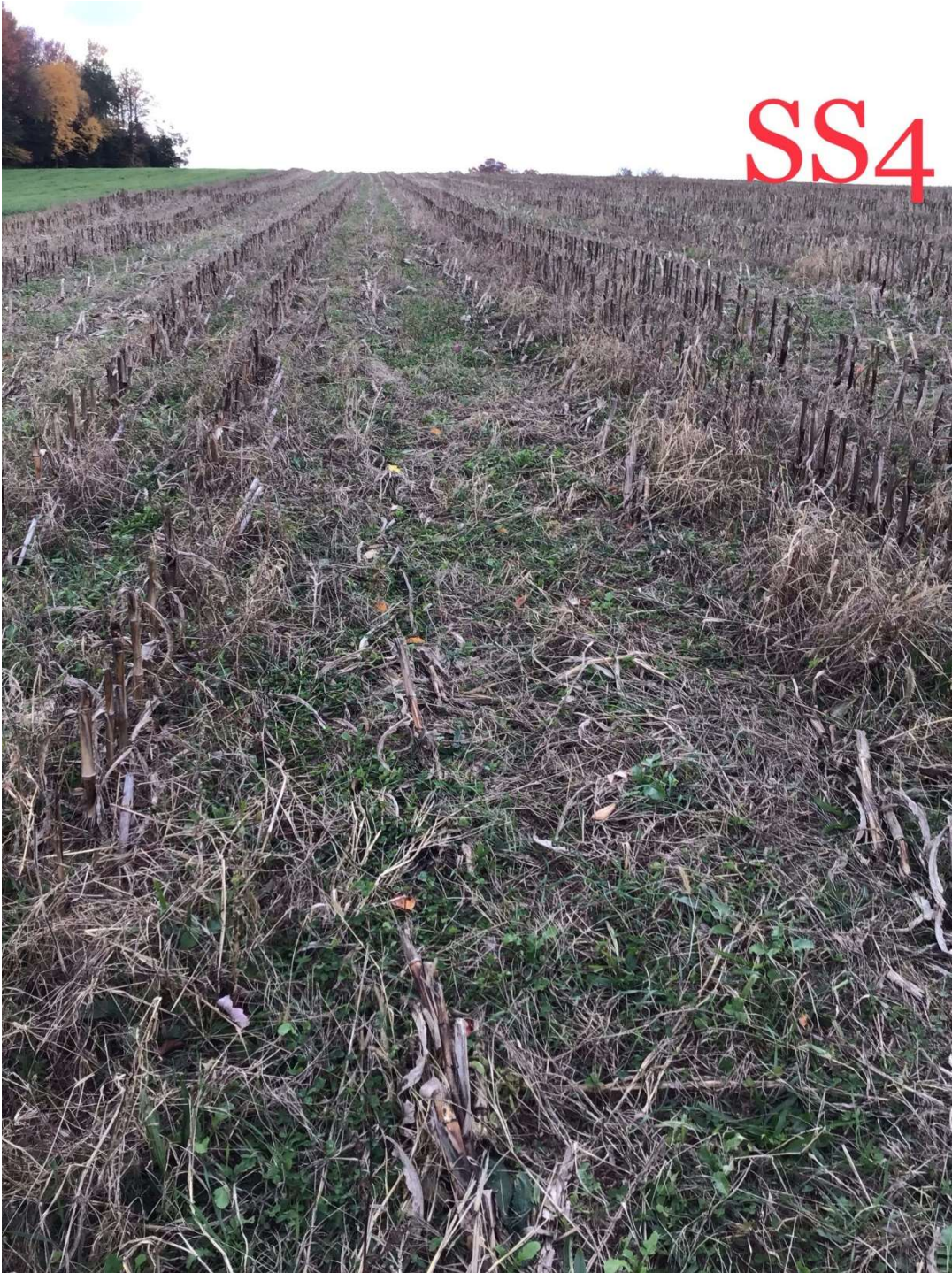
<b>RAINFALL AMOUNTS</b>	<b>(INCHES)</b>
<b>JULY</b>	1.58
<b>AUGUST</b>	2.89
<b>SEPTEMBER</b>	1.95
<b>OCTOBER</b>	3.09
<b>NOVEMBER</b>	3.7
<b>DECEMBER</b>	Snow cover



Interseeder Close Up



SS4



Other field updates include Short Strip 4 (SS4). Growth was similar to SS2, but with more weed competition.



Half Mile 3 (HM3) had almost nothing growing until late Novmeber. It had a dairy slurry applied late October.





HM3 growth late November.







Half Mile 5 (HM5) had growth stages similar to HM3, but not as dense.