

Empowering Women in Agriculture Through Ergonomic and Smart Innovation

Jianfeng Zhou, PhD. Karen Funkenbusch, MA. Marcia C. Shannon, PhD. Oguche Felix.
University of Missouri, Columbia, MO (contact: fofdt@umsystem.edu)

Participate in Transformative Research

- Are you interested in advancing women's health and safety in agriculture?
- The University of Missouri's Agricultural Systems Management invites you to participate in a pivotal study assessing the benefits of ergonomic tool use.

Goal

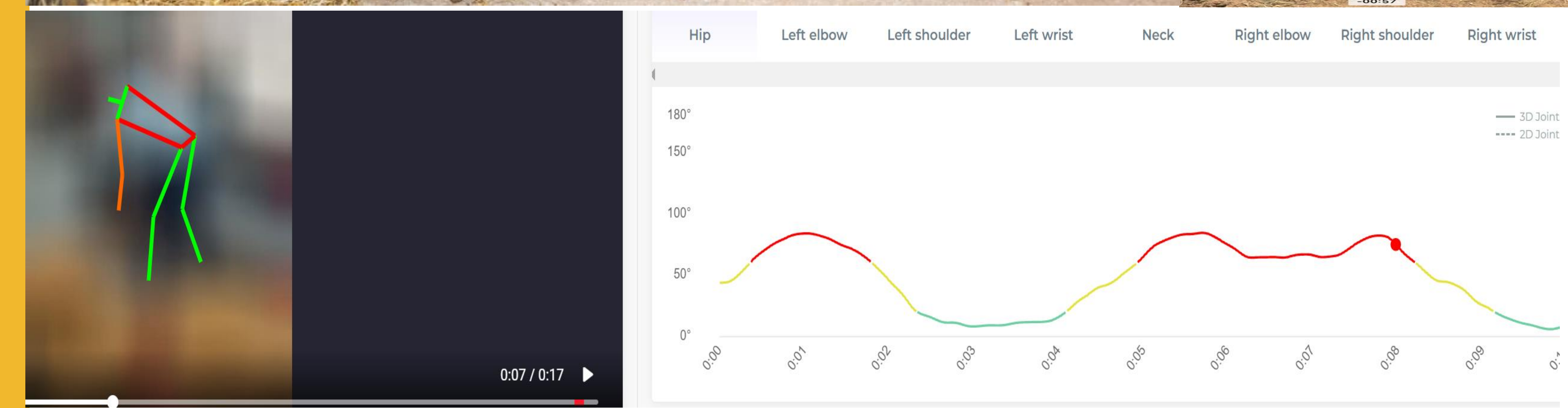
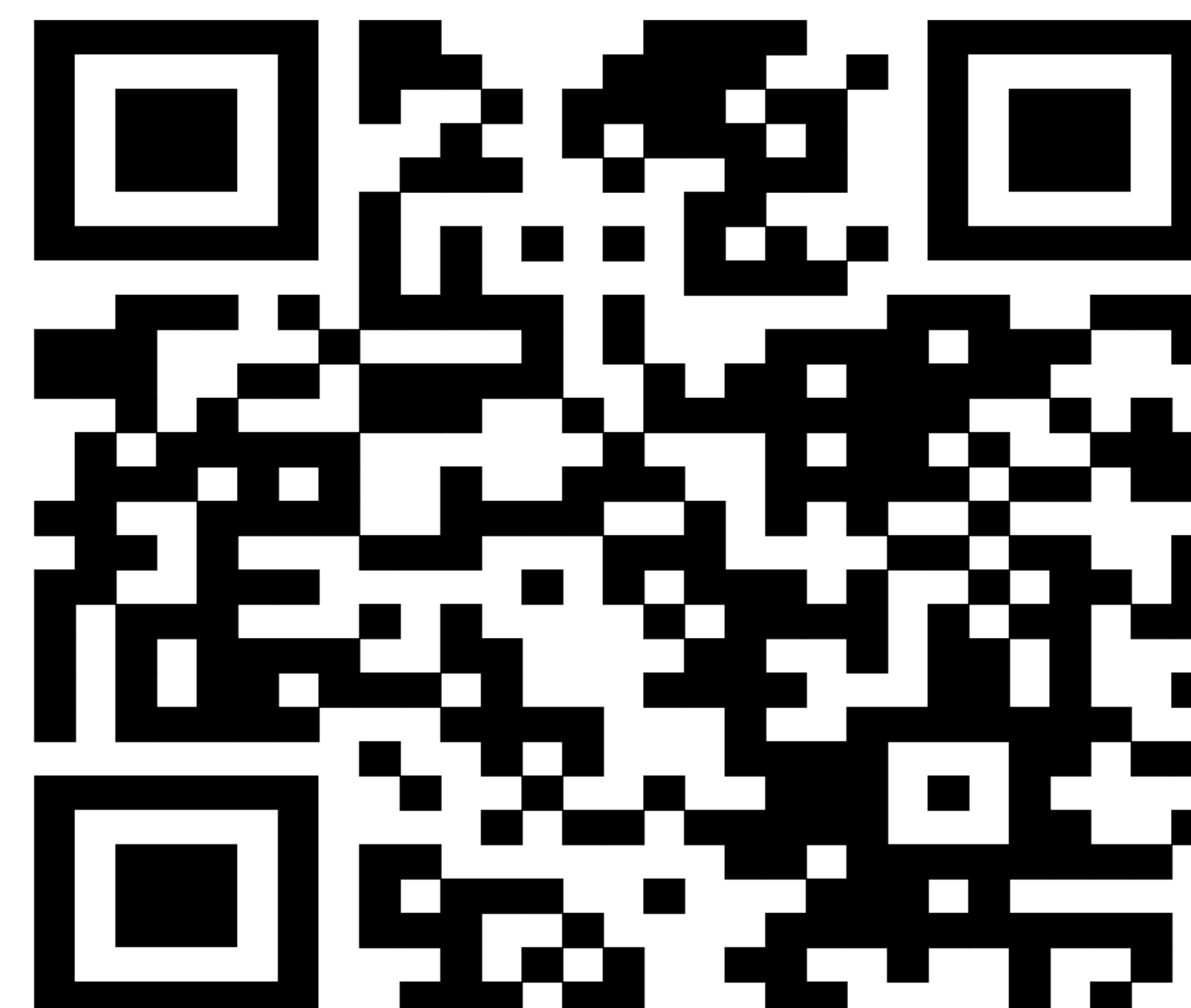
- Assess enhanced shovels and pitchforks for physical strain reduction in women farmers, compared to conventional scoop shovels and pitchforks via heart rate, energy use, and ergonomic assessment score
- Measure the benefits of ergonomic auxiliary grip designs on shovels and pitchforks in reducing stress and enhancing efficiency
- Provide education programs and solutions to improve the health and safety of women farmers
- Develop next-generation tools using ergonomic, engineering, automation and smart technology standards

Study Details

- Twelve 5-minute work intervals with a 3-minute rest in between. Total 1 hr. 36 minutes
- Use conventional tools and then tools with ergonomic enhancements.
- Tasks include scooping wood pellets and cleaning straw.

We Value Your Diversity

- Looking for participants of varied weights, heights, and age.
- Ensuring broad representation in agricultural ergonomic research.



Health Monitoring

- We'll track oxygen levels, blood pressure, and body temperature.
- Understand your personal energy expenditure and cardiac workload

Confidentiality Guaranteed

- Participants' identities will remain confidential.
- Comprehensive findings shared after study completion.

Your Participation Perks

- 25-dollar Gift Card for your valuable time and effort.
- Complimentary Lunch Pack to keep you fueled and focused.

Interested in Participating? Signup @Scan QR code or
Contact Oguche Felix to sign up or ask questions:
•Phone: 573-590-0507
•Email: fofdt@missouri.edu