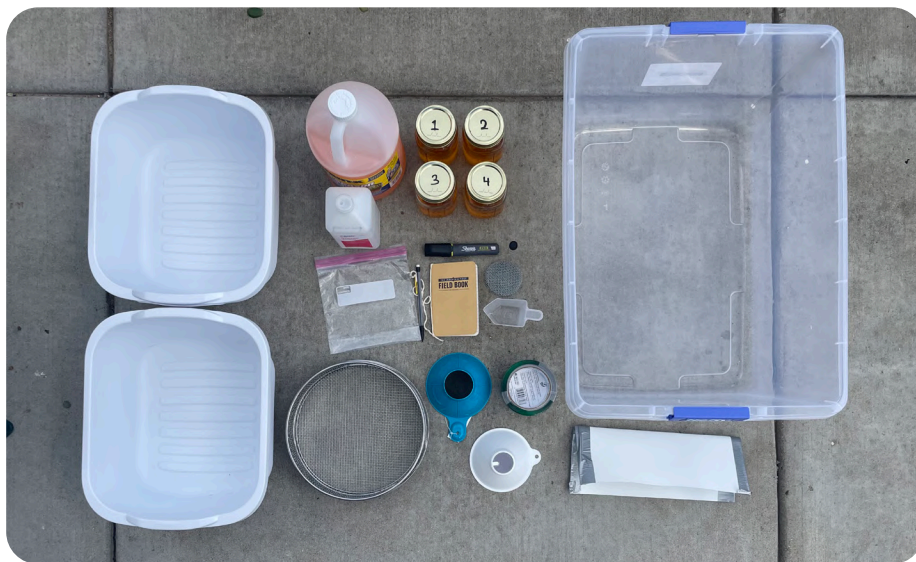




Varroa Mite Sampling Kit

The Alcohol Wash: The fastest and easiest varroa mite monitoring method

What is included with your kit?



Video in English
z.umn.edu/VarroaEnglish



Instructions
z.umn.edu/VarroaTest

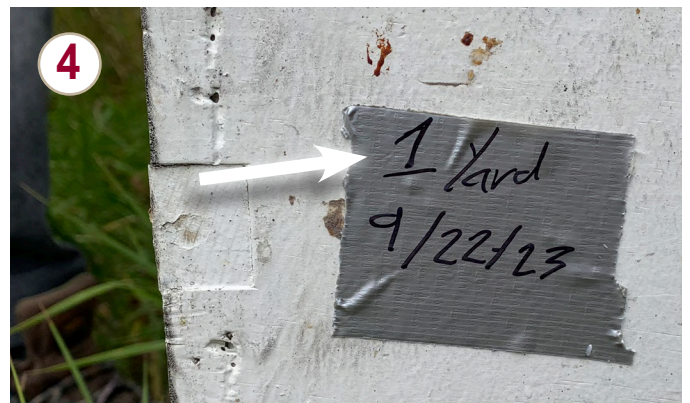
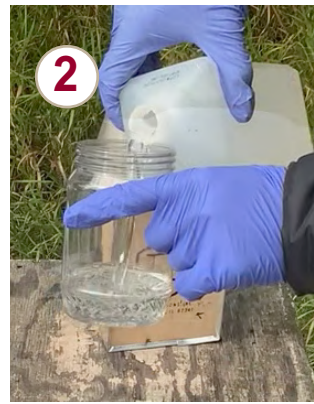


This material is based upon work that is supported by the National Institute of Food and Agriculture, U.S. Department of Agriculture, under agreement number 2021-38640-34714 through the North Central Region SARE program under project number LNC21-448 with the title "Addressing honey bee health challenges in Minnesota through providing colony assessment tools and education for beekeepers." USDA is an equal opportunity employer and service provider. Any opinions, findings, conclusions, or recommendations expressed in this publication are those of the author(s) and do not necessarily reflect the view of the U.S. Department of Agriculture.

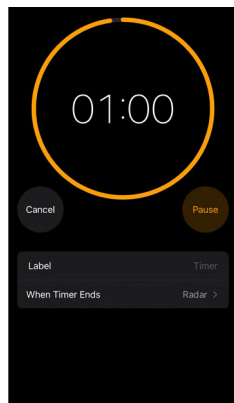


Questions or comments? Contact Katie Lee at katielee@umn.edu or (651) 497-1305

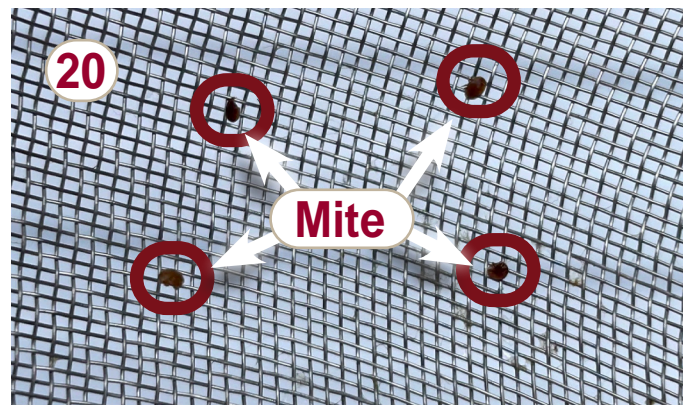
How to Sample...



...How to Sample...



...How to Sample



23 Record Data

	colony	Mites
Yard 1	1	0
	2	1
	3	0
	4	0
Yard 2	1	2
	2	0
	3	0
	4	0
Yard 3	1	1
	2	1
	3	0
	4	2
Yard 4	1	4

Signs of Varroa Mite Damage



More common in summer and fall

Mites in Drone Brood



Deformed Wings



Mites on Adult Bees



Uncapped Pupae



Mite Poop in Brood Cells



Brood Damage



NOTES

NOTES

The information given in this publication is for educational purposes only. References to commercial products or trade names is made with the understanding that no discrimination is intended and no endorsement by the Minnesota Extension Service is implied. Find more University of Minnesota Extension educational information at www.extension.umn.edu.

© 2024, Regents of the University of Minnesota. University of Minnesota Extension is an equal opportunity educator and employer. In accordance with the Americans with Disabilities Act, this publication/material is available in alternative formats upon request. Direct requests to 612-624-0772.