

Feed Analysis Report

Representative:

Ryan Heinen
Dr Darren Zimmerman

Gwenyn Hill Farm 4897
N130W294 Bryn Dr
Waukesha, WI 53188
605.380.2697

6-27-23 Prairie NIR
Ryan Heinen

Dry Matter 30.41%
Moisture 69.59%

Description (%DM unless specified)	Dry Matter Basis	Grasses	
		60 dy Avg	4 yr Avg
Dry Matter	30.41	32.8	28.6
Crude Protein	11.26	13.8	15.4
Soluble Protein, %CP	5.37	15.2	26.1
Avail. Crude Protein	11.05	13.4	14.8
ADICP	0.21	0.351	0.624
NDICP	2.57	2.67	2.43
ADICP %CP	1.86	2.17	4.05
ADF	36.99	35.2	35.9
aNDF	59.88	54.8	53.4
aNDFom	57.31	51.4	49.5
Calcium	0.36	0.311	0.442
Phosphorus	0.20	0.280	0.325
Magnesium	0.19	0.180	0.234
Potassium	1.03	2.47	2.61
Sulfur	0.17	0.204	0.206
Fat (EE)	3.25	3.60	3.22
Ash	7.15	10.5	10.9
Lignin	6.74	5.63	5.10
Sugar (ESC)	3.93	6.10	4.89
Sugar (WSC)	4.79	9.39	7.80
Starch	3.45	3.55	2.23
NDF Digest.: Traditional=Goering & Van Soest Method, Standardized=Combs-Goeser Method			
NDFD 30, %NDF	52.62	54.5	50.1
Standardized NDFD 30, %NDF	34.91	41.6	36.5
NDFD 240, %NDF	68.26	75.9	70.6
uNDF30	28.37	23.9	26.2
uNDF240	19.01	12.3	15.3
tNDFD30om %aNDFom	55.70	57.9	53.0
tNDFD240om %aNDFom	70.73	78.1	73.3
uNDF30om	25.38		
uNDF240om	16.77		
Calculations			
RFQ	110		
Dynamic NDF Kd (using 24,30,48 hr) %/hr	6.16		
RFV	93	102	106
NFC	21.01	18.9	18.6
Milk 2006 Energy calculated using 30h Trad NDFD Dairy			
TDN 1X	56.09	57.8	54.7
NEL 3x, Mcal/lb	0.613	0.612	0.596
NEG, Mcal/lb	0.287	0.317	0.262
NEM, Mcal/lb	0.543	0.576	0.516
Milk/Ton, lb	2683	2719	2551

For analysis guidelines, please visit <https://www.rockriverlab.com>

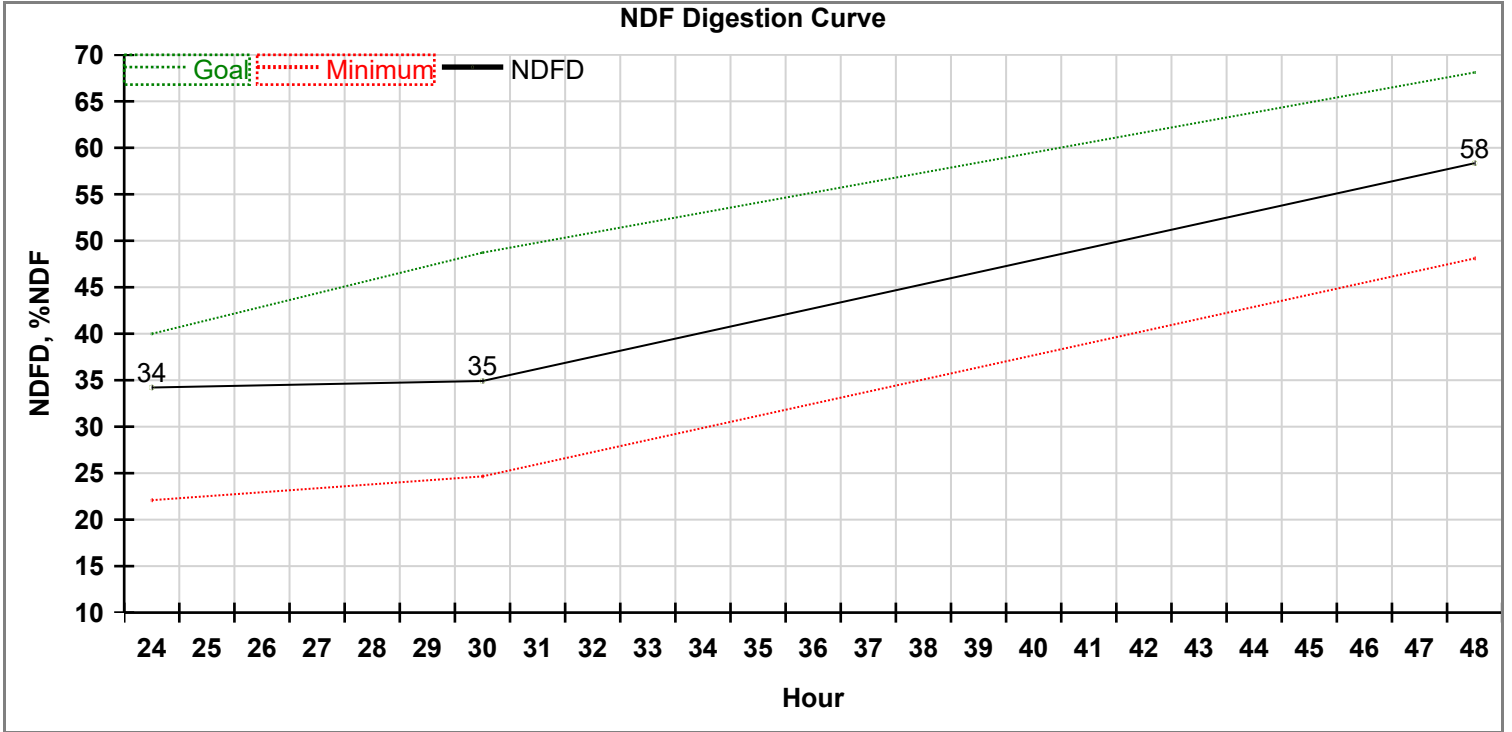
Feed Analysis Report

Representative:
Ryan Heinen
Dr Darren Zimmerman

Gwenyn Hill Farm 4897
N130W294 Bryn Dr
Waukesha, WI 53188
605.380.2697

6-27-23 Prairie NIR
Ryan Heinen

Dry Matter 30.41%
Moisture 69.59%

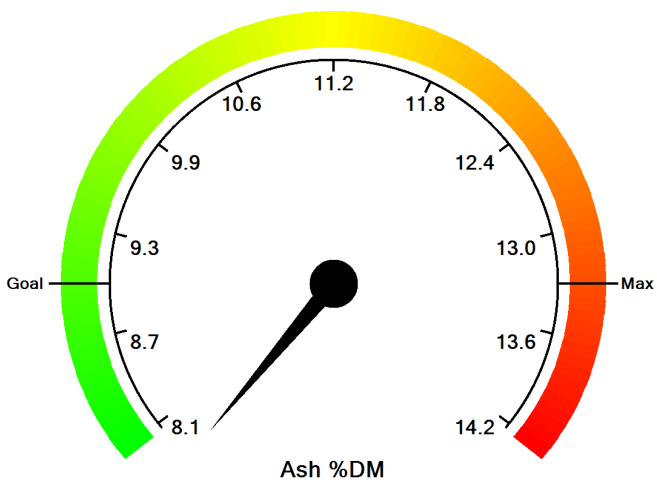
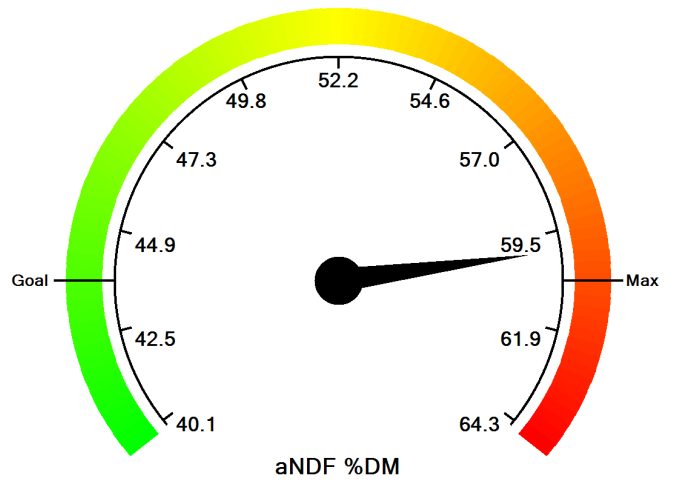
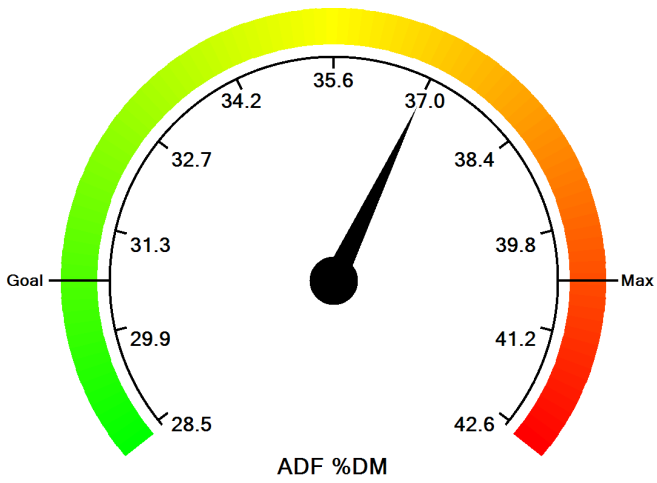
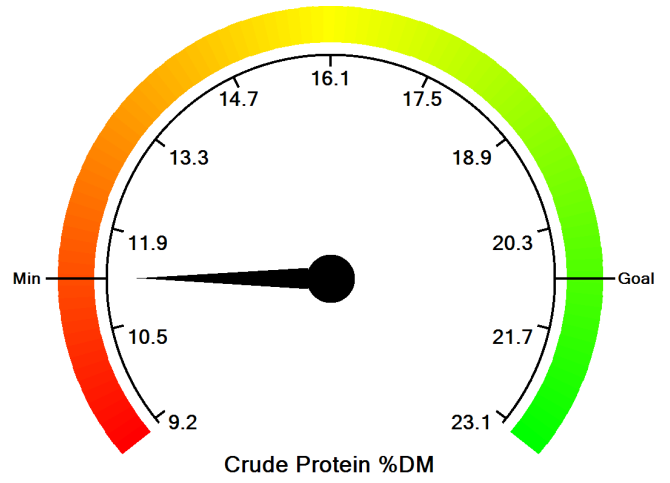
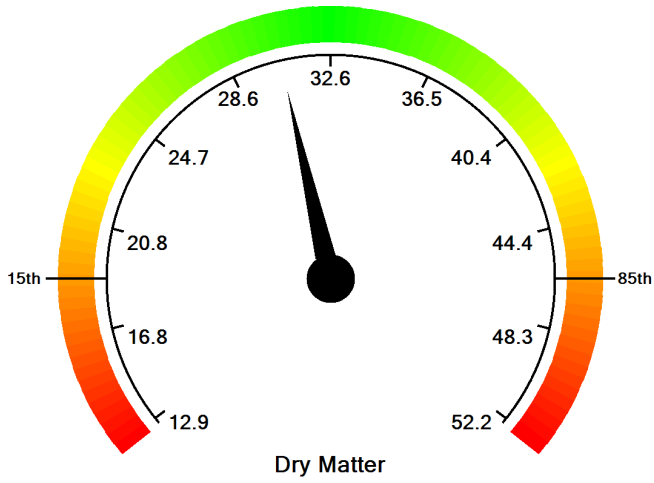


aNDF (w/NaSO₃) %DM = 59.9

The Goal corresponds to the 85th percentile and the Minimum corresponds to the 15th percentile.

Visual Feed Analysis Report

Lab Number 1461652 6/27/2023
Sample ID 6-27-23 Prairie NIR
Farm Ryan Heinen
Consultant Ryan Heinen; Dr Darren Zimmerman



The Goal corresponds to the 85th percentile and the Minimum corresponds to the 15th percentile.