

Figure 1. Cover crop biomass collected at the cover crop termination day at the three locations.

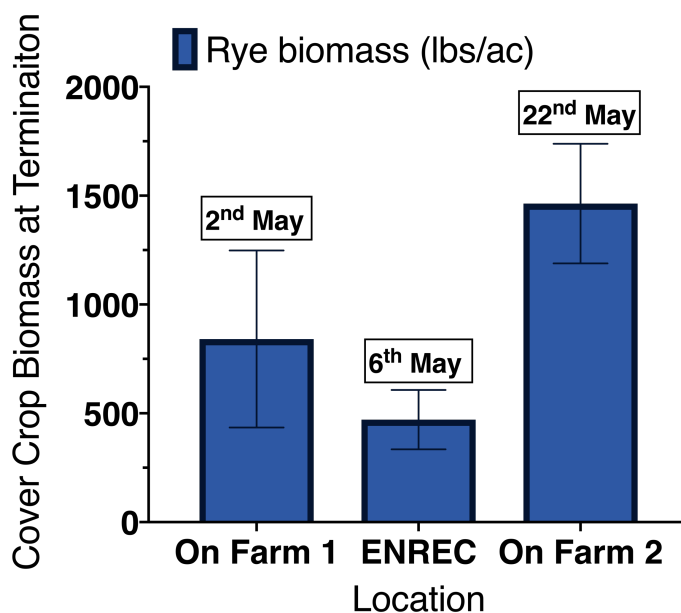


Figure 2. Cover crop extended leaf height just prior to termination.

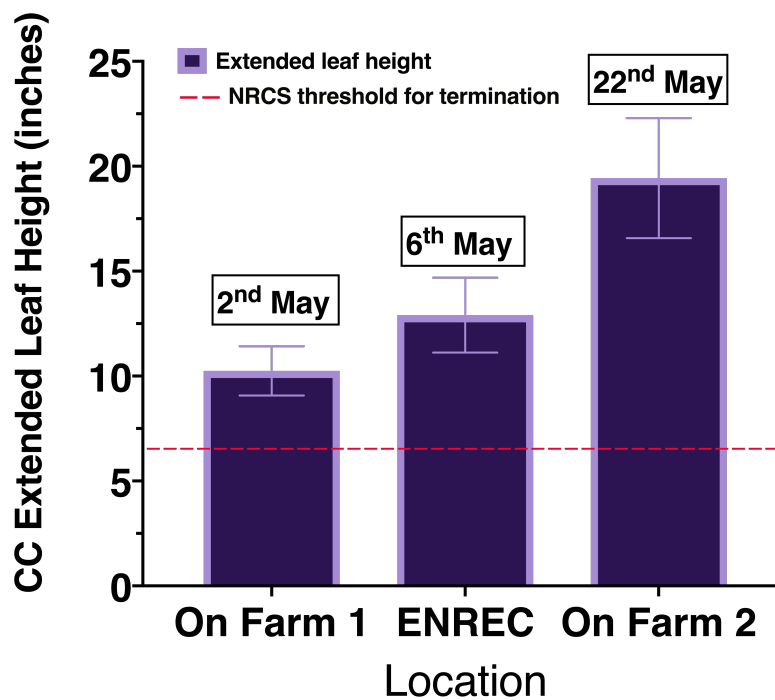


Table 1. Total arthropod number collected per treatment per site. Total of 16,695 arthropods were collected across all sites in three pitfall samples dates.

Location	No Insecticide	Tank Mix	Late Insecticide	No Cover Crop
On-farm 1	1,600	785	753	-
On-farm 2	2,902	2,480	1,903	2,689
ENREC	1,181*	1,247	393	764
Total	5,683	4,512	3,049	3,453

Table 2. Arthropod families within arthropod groups.

Pests	Predators	Decompositors	Prey	Immatures	Microarthropods	Macroarthropods
Pentatomidae	Carabidae	Nitidulidae	Colembolla	Larvae	Acari	Araneae
Elateridae	Staphalinidae	Anthomyidae		Nymph	Isopoda	
Aphididae	Coccinellidae				Diplopoda	
Cicadellidae	Formicidae					
Chrysomelidae						

Figure 3. Total arthropods number per group collected at on-farm location 1 at cover crop termination.

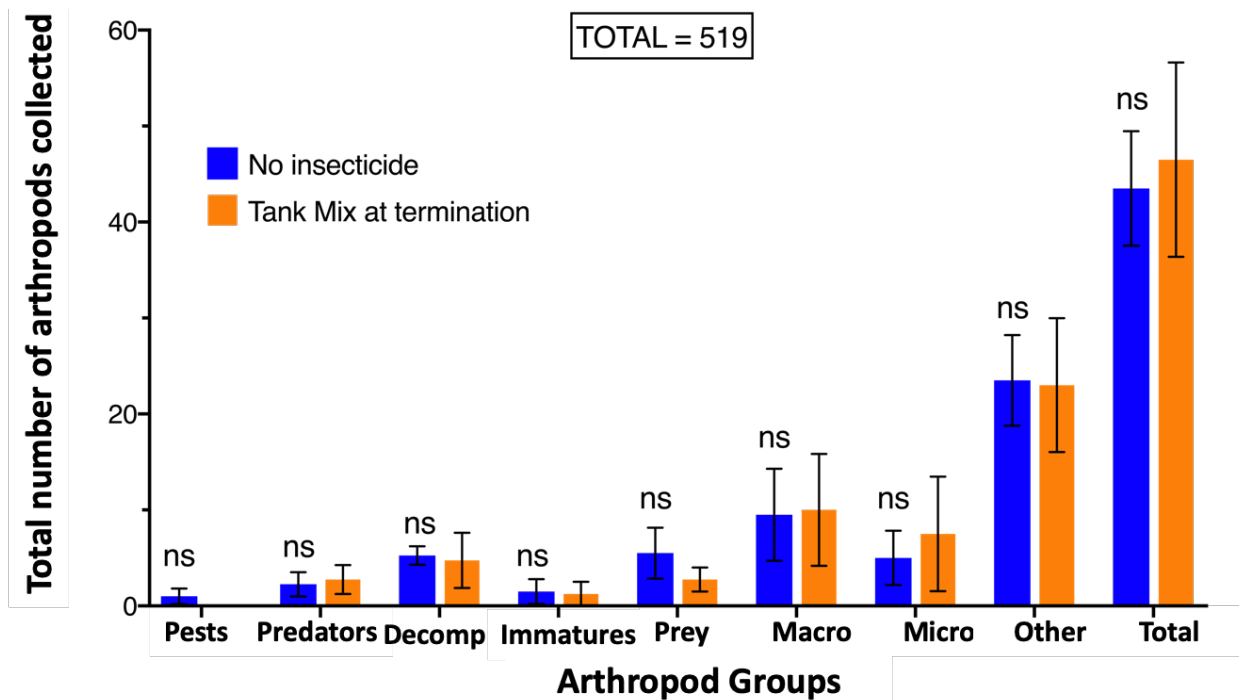


Figure 4. Total arthropods number per group collected at the ENREC location at cover crop termination.

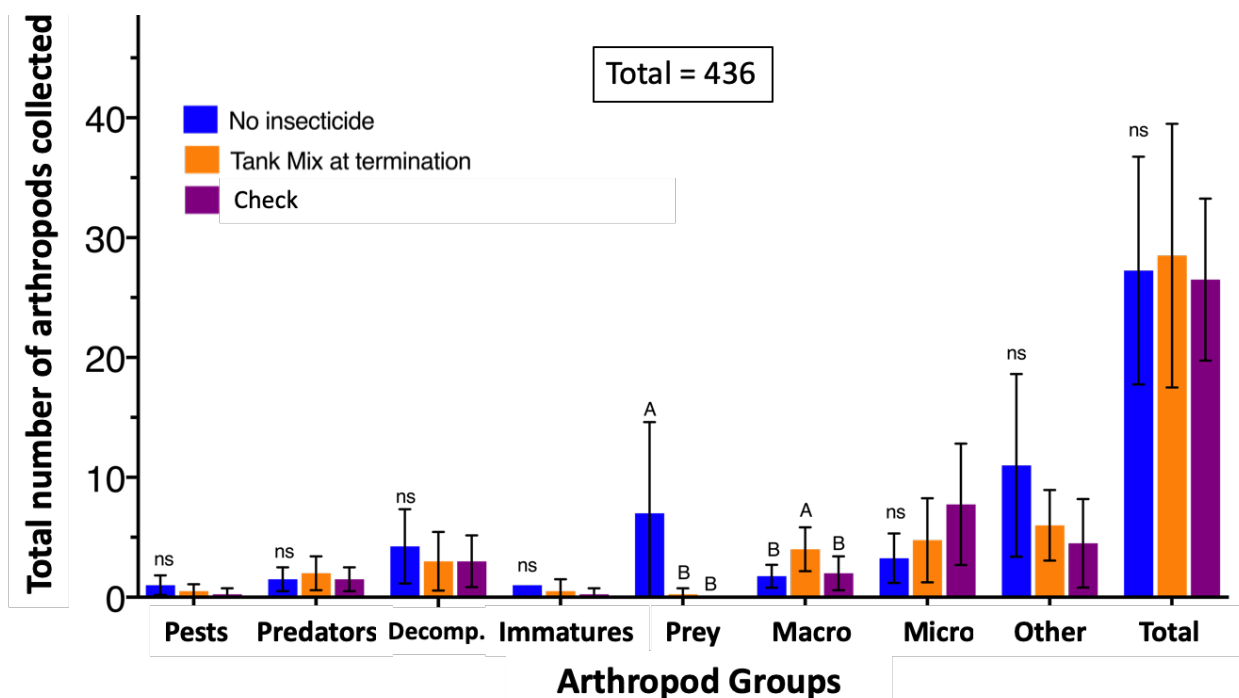


Figure 5. Total arthropods number per group collected for on-farm location 1 for the late insecticide application (25 days after the cover crop termination).

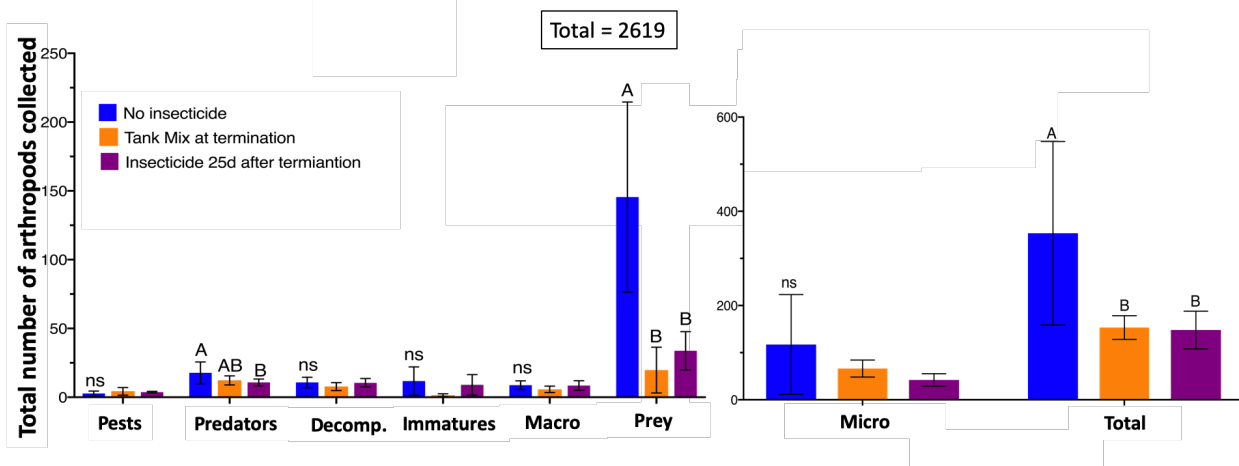


Figure 6. Total arthropods number per group collected for on-farm ENREC location for the late insecticide application (25 days after the cover crop termination).

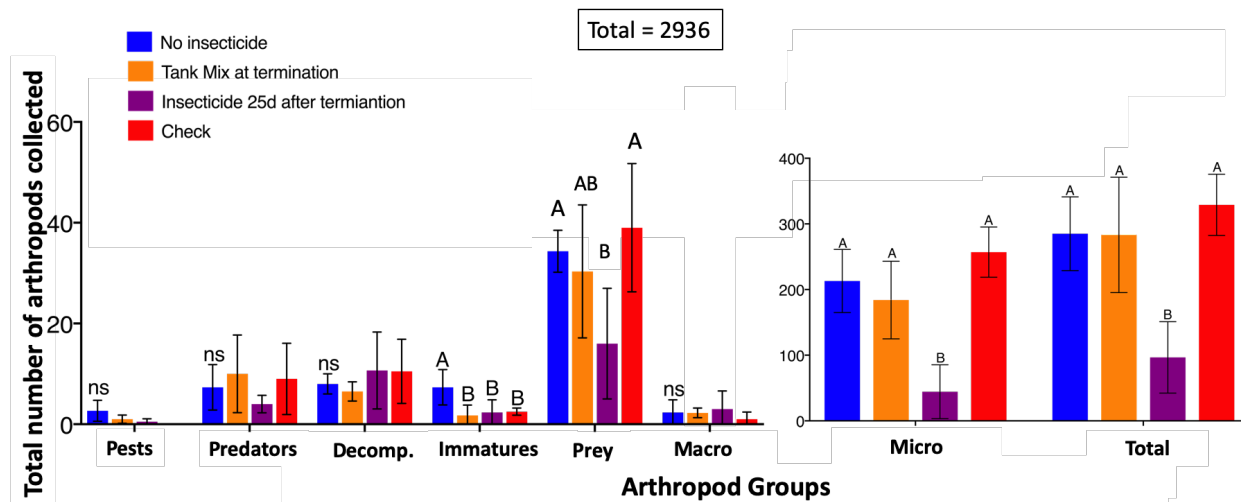


Figure 7. Total arthropods number per group collected for on-farm location 2 for the late insecticide application (25 days after the cover crop termination).

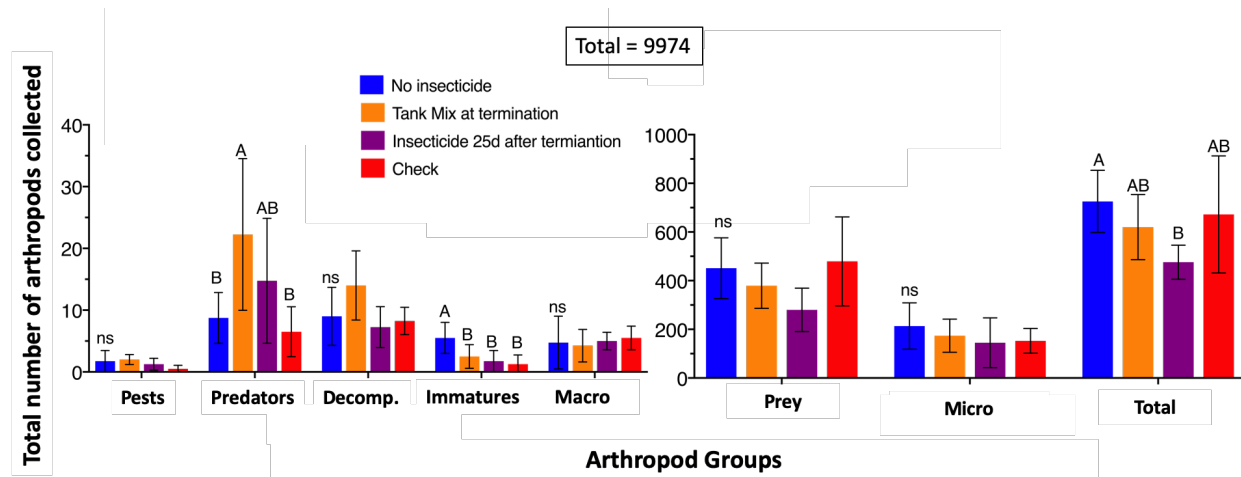


Figure 8. Corn yield corrected at 13% moisture at the three location by insecticide management.

