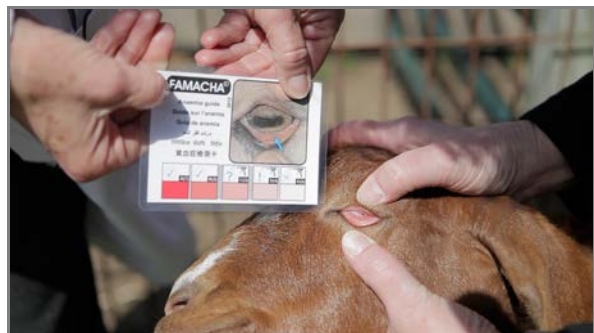


2016 Sheep and Goat Parasite Control Workshop & Field Day

Thursday, July 14, 2016 – University of Rhode Island

10:00 AM to 1:30 PM - Integrated Parasite Control & FAMACHA® Training Workshop.

Room 195, Independence Square II Bldg followed by hands-on training for FAMACHA® scoring at URI Peckham Farm (across street). Trainer: Dr. Katherine Petersson, URI Dept. Animal and Veterinary Science



- Small ruminant parasite ID & biology
- Dewormers & drug resistance
- Integrated parasite control practices
- FAMACHA® system including hands-on training for detection of anemia associated with barber pole worm infections.

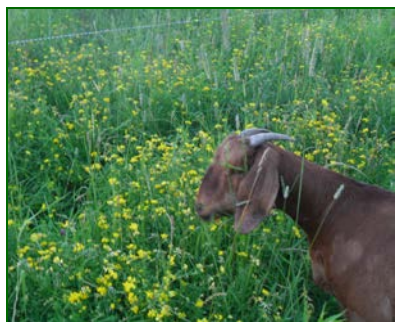
Attendees completing the training can purchase a laminated FAMACHA® card for \$13.00 (optional).

Light refreshments will be available, bring a bag lunch.

1:30 PM – 2:00 PM – Hands-on fecal egg counting demonstration using the Modified McMaster Test will be available at the URI Peckham Farm Main Barn first floor lab. View our video, *Why and How To Do Fecal Egg Counts*, for a complete presentation and demonstration, <http://web.uri.edu/sheepngoat/video/>

3:00 PM – 6:30 PM – Field Day on Alternative Methods for Small Ruminant Parasite Control

Updates on research to evaluate the anti-parasitic effects of condensed tannin plants -- Birdsfoot trefoil, a forage legume suited to Northeast growing conditions, and cranberry.



Birdsfoot trefoil:

NEW!! Demonstration farms and grazing trials in NY & Maine – Dr. tatiana Stanton, Small Ruminant Extension Specialist, Cornell University.

Updates from URI Researchers:

- Growing BFT – needs and challenges
- Commercial varieties and accessions under study
- Research on the anti-parasitic effects of BFT in sheep

Cranberry leaf powder:

- Laboratory & animal studies demonstrating efficacy as an anti-parasitic
- Development of a cranberry leaf powder feed supplement

URI researchers to include: Dr. Rebecca Brown, URI Dept. Plant Sciences; Dr. Katherine Petersson, URI Dept. Animal and Veterinary Science; Carly Barone and Kara Lonngren, URI graduate students.

Light refreshments will be available.

Programs to be held rain or shine! Dress for the weather.



Register for one or all programs online at <https://www.surveymonkey.com/r/uripcregistration>
OR contact Holly Burdett, URI Cooperative Extension at (401) 874-2249 or email hburdett@uri.edu