

2021 Corn Grain Field Name	Cash crop <ul style="list-style-type: none"> <li>plant date</li> <li>fertilizer/spray</li> <li>weed pressure</li> <li>harvest data</li> </ul>	Cover Crop <ul style="list-style-type: none"> <li>interseed date &amp; rate</li> <li>fall growth</li> <li>spring growth</li> <li>termination? Or succeeding crop?</li> </ul>	Cost  2022 list pricing No seed discount
IFF 1	<ul style="list-style-type: none"> <li>May 17</li> <li>1.5 ton chicken litter, 10 gal/ac 7-21-7 starter/ Roundup &amp; Resolve RQ</li> <li>None</li> <li>130 bu/ac</li> </ul>	Wheat <ul style="list-style-type: none"> <li>September 15, 100lb/ac</li> <li>None</li> <li>¼ ac patch</li> <li>Terminated May 22, 2022</li> </ul>	\$45.00/ac  Cover crop wheat
Top 6	<ul style="list-style-type: none"> <li>May 16</li> <li>2 ton chicken litter, 10 gal/ac 7-21-7 starter/ Roundup &amp; Resolve RQ</li> <li>None</li> <li>100 bu/ac</li> </ul>	Triticale/radish <ul style="list-style-type: none"> <li>November 1, 92 lb triticale 8 lb radish/ac</li> <li>None</li> <li>80% dry matter est., 6-10" tall</li> <li>Terminated May 22, 2022</li> </ul>	\$58.00/ac
Top 2	<ul style="list-style-type: none"> <li>May 25</li> <li>2 ton chicken litter, 10 gal/ac 7-21-7 starter/ Roundup &amp; Resolve RQ</li> <li>None</li> <li>100 bu/ac</li> </ul>	Triticale/radish <ul style="list-style-type: none"> <li>November 1, 92 lb triticale 8 lb radish/ac</li> <li>None</li> <li>sparse</li> <li>Terminated May 22, 2022</li> </ul>	\$58.00
Top 4	<ul style="list-style-type: none"> <li>May 17</li> <li>2 ton chicken litter, 10 gal/ac 7-21-7 starter/ Roundup &amp; Resolve RQ</li> <li>None</li> <li>160 bu/ac</li> </ul>	Triticale/radish <ul style="list-style-type: none"> <li>November 1, 92 lb triticale 8 lb radish/ac</li> <li>None</li> <li>60% dry matter est., 10-12" tall</li> <li>Terminated May 22, 2022</li> </ul>	\$58.00/ac
Specht top	<ul style="list-style-type: none"> <li>May 16</li> <li>10 gal/ac 7-21-7 starter/ Roundup &amp; Resolve RQ</li> <li>Massive Maretail</li> <li>No harvest</li> </ul>	Cereal Rye/radish <ul style="list-style-type: none"> <li>November 1, 92 lb cereal rye 8 lb radish/ac</li> <li>None</li> <li>None</li> <li>Sprayed May 22, 2022</li> </ul>	\$55.00/ac

2021 Corn Silage Field Name	Cash crop <ul style="list-style-type: none"> <li>• plant date</li> <li>• fertilizer/spray</li> <li>• weed pressure</li> <li>• harvest data</li> </ul>	Cover Crop <ul style="list-style-type: none"> <li>• interseed date &amp; rate</li> <li>• fall growth</li> <li>• spring growth</li> <li>• termination? Or succeeding crop?</li> </ul>	Cost
Willis 4	<ul style="list-style-type: none"> <li>• May 22</li> <li>• 10 ton dairy manure, 6 gal/ac 7-21-7 starter, 100 lb/ac urea side dress/ Roundup &amp; Resolve RQ</li> <li>• Very little</li> <li>• 18 ton/ac BMR harvested October 3</li> </ul>	Wheat <ul style="list-style-type: none"> <li>• September 16, 100lb/ac</li> <li>• Sparse</li> <li>• 90% dry matter est.</li> <li>• Plan to harvest July 30, 2022</li> </ul>	\$45.00/ac
HM3	<ul style="list-style-type: none"> <li>• May 15</li> <li>• 20 ton dairy manure, 6 gal/ac 7-21-7 starter, 100 lb/ac urea side dress/ Roundup &amp; Resolve RQ</li> <li>• None</li> <li>• 21 ton/ac BMR harvested September 19</li> </ul>	Black Oat <ul style="list-style-type: none"> <li>• September 18, 100lb/ac</li> <li>• 90%, Fall manure application</li> <li>• None</li> <li>• Winterkill, followed with spring barley</li> </ul>	\$54.00
HM1	<ul style="list-style-type: none"> <li>• May 22</li> <li>• 20 ton dairy manure, 6 gal/ac 7-21-7 starter, 100 lb/ac urea side dress/ Roundup &amp; Resolve RQ</li> <li>• None</li> <li>• 20.6 ton/ac BMR harvested October 3</li> </ul>	Triticale/Radish <ul style="list-style-type: none"> <li>• August 15, 92lb/ac triticale, 8 lb/ac radish</li> <li>• 40% dry matter est., 3-4" tall</li> <li>• 90% dry matter est., 10-11" tall</li> <li>• Terminated May 11, 2022</li> </ul>	\$58.00/ac
HM5	<ul style="list-style-type: none"> <li>• May 24</li> <li>• 20 ton dairy manure, 6 gal/ac 7-21-7 starter, 100 lb/ac urea side dress/ Roundup &amp; Resolve RQ</li> <li>• None</li> <li>• 21.9 ton/ac BMR harvested October 3</li> </ul>	Cereal Rye/Radish <ul style="list-style-type: none"> <li>• August 11, 92 lb/ac cereal rye, 8 lb/ac radish</li> <li>• None</li> <li>• None</li> <li>• Terminated May 11, 2022</li> </ul>	\$55.00/ac



## Fall Cover Crop Growth in Corn Silage

**Willis 4**

wheat  
harvest tracks present

**HM3**

Black Oat  
harvest tracks present

**HM1**

Triticale/radish



**Spring Cover Crop Growth in Corn Silage**

**Willis 4**

**Wheat**

**HM 3**

**Black Oat  
Winterkill**

**HM 1**

**Triticale/radish**

# Interseeded Cover Crop in Corn Silage

## Additional Photos

HM 3-14 days post plant



HM 3-14 days post plant



HM 1-42 days post plant



sprouted rye & radish HM 5



HM3 DM estimation 2 mo. post plant



Harvest track width



W. Triangle DM est. 50 days post plant



Close up winterkilled black oats



Sprouted 2022 corn in triticale stubble





**Spring Cover Crop Growth in Corn Grain**

**Top 4**

**Triticale/radish**

**Top 6**

**Triticale/radish**

**IFF 1**

**Wheat  
1/4 ac patch**

# Interseeded Cover Crop in Corn Grain

## Additional Spring Photos

IFF 1



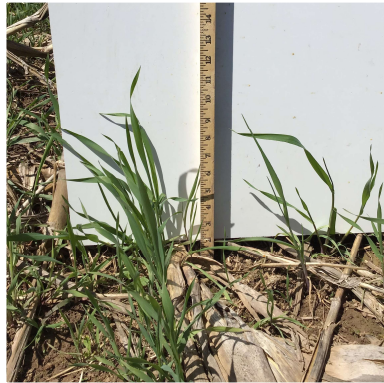
Top 6



Top 6



Top 4



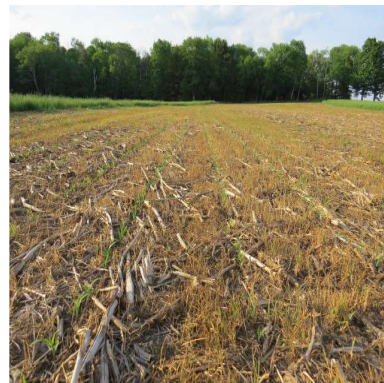
Top 4



Top 2



Top 6



Top 4



Top 2

