

BeeMapper web tool: update and testing

Brianne Du Clos

University of Maine

brianne.duclos@maine.edu

What is BeeMapper?

- An interactive map that displays predicted wild bee abundance in the landscape surrounding wild blueberry fields
- Information from BeeMapper can be used to
 - Determine placement of honey bee hives during blueberry pollination.
 - Establish a pollinator conservation plan for particular crop fields.
 - Understand wild pollinator communities in different types of land.

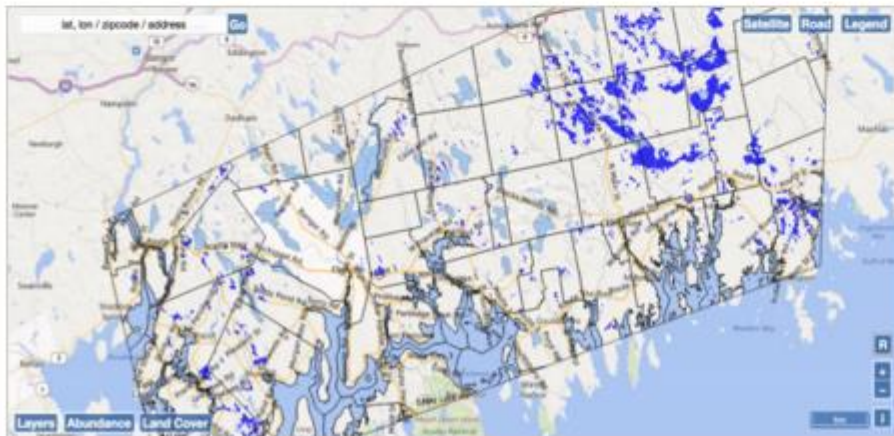
<https://www-dev.umaine.edu/beemapper>



[Home](#) [About](#) [Development](#)

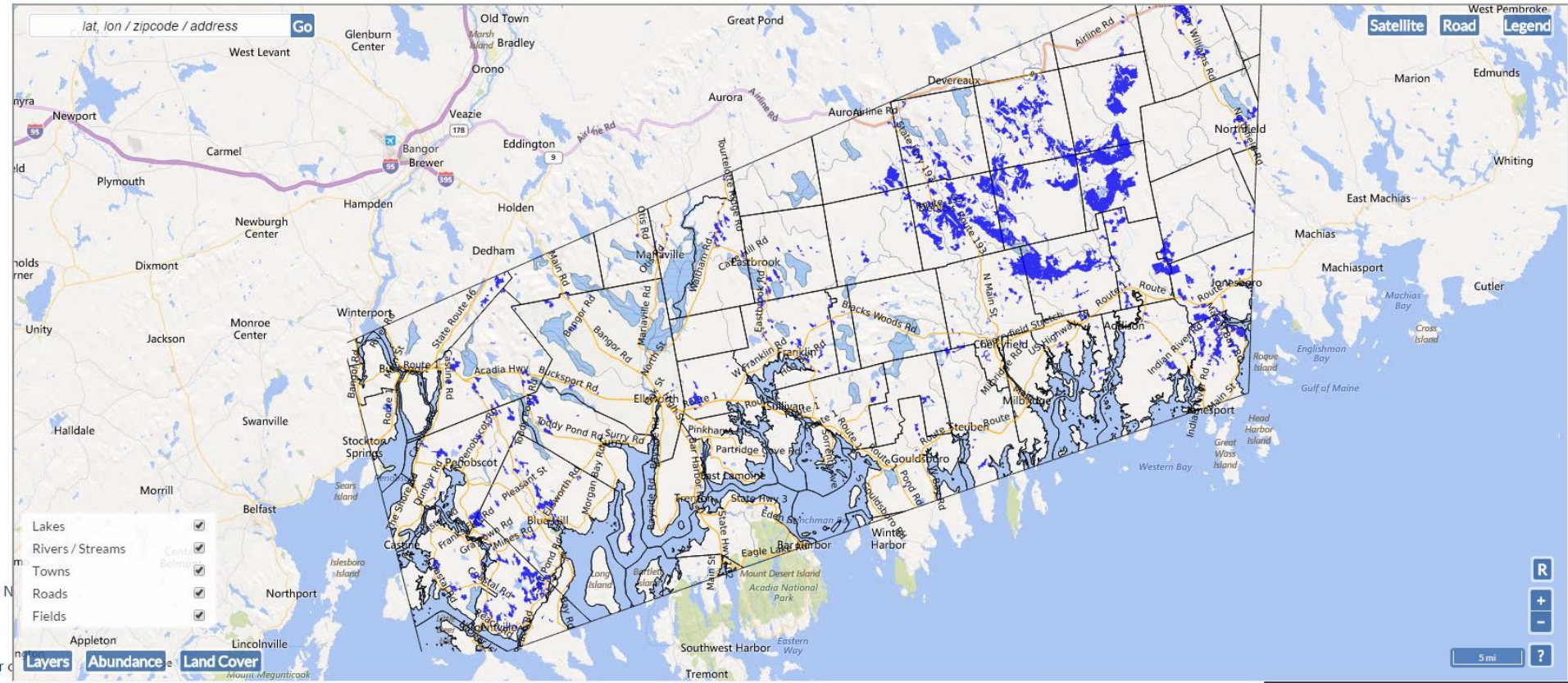
Welcome to BeeMapper

Start BeeMapper by clicking on the map:



Search for:

Search



lat, lon / zipcode / address

Go

Satellite Road Legend

- Lakes
- Rivers / Streams
- Towns
- Roads
- Fields

Layers Abundance Land Cover

5 mi ?

lat, lon / zipcode / address

Go

Satellite

Road

Legend

Sugar Hill Rd

N Main Street

77-77 S Rd

Rd

Layers

Abundance

Land Cover

R

+

-

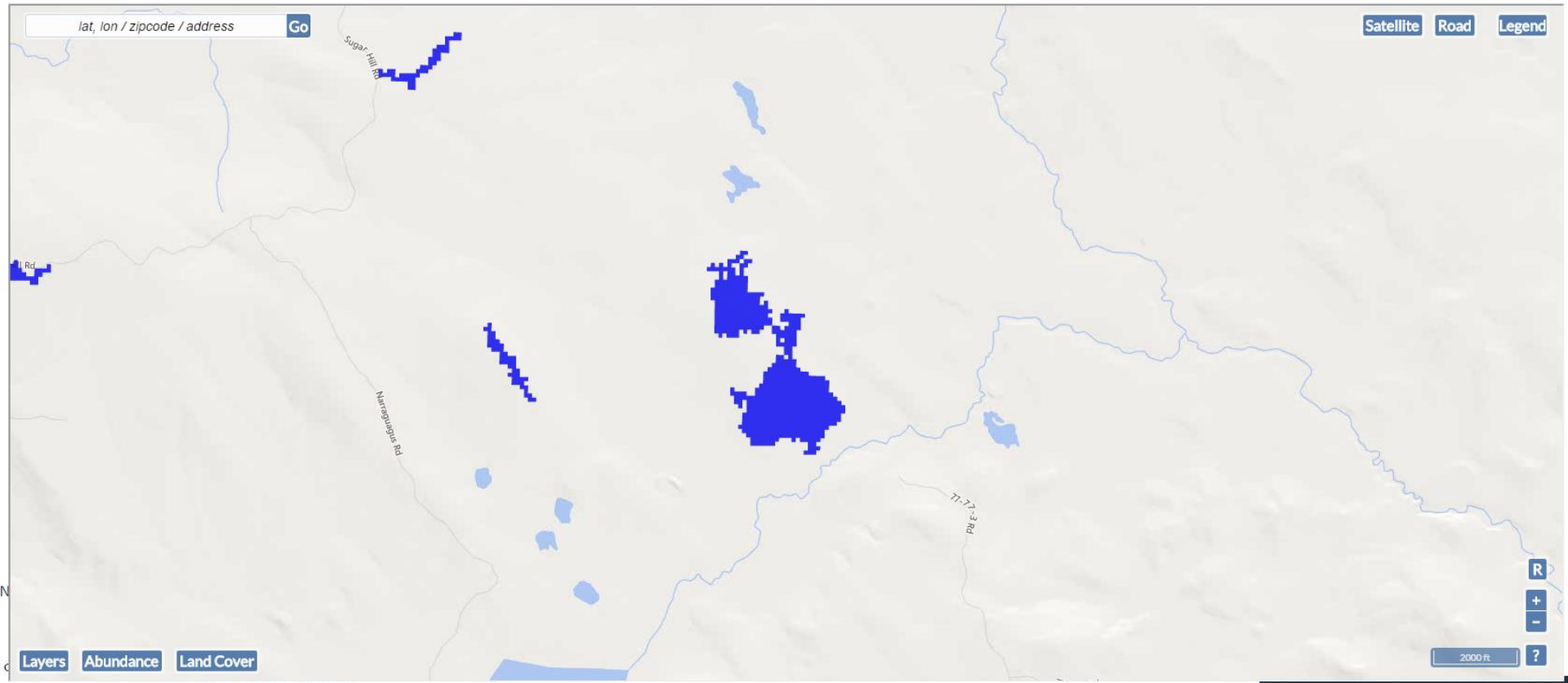
?

2000 ft

N

C

THE UNIVERSITY OF



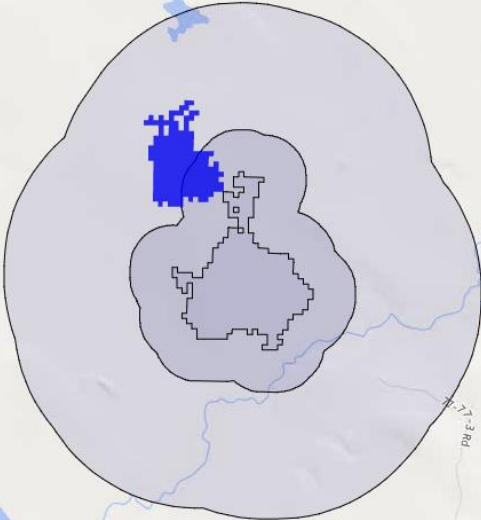
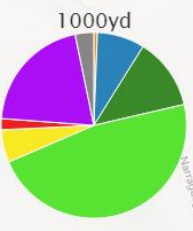
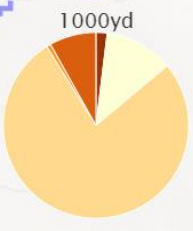
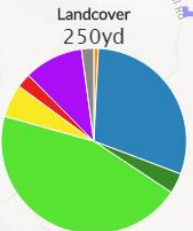
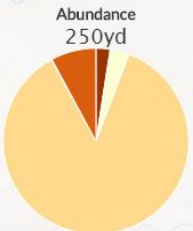
lat, lon / zipcode / address

Go

Satellite

Road

Legend



Layers Abundance Land Cover

R + - 2000 ft ?

lat, lon / zipcode / address

Go

Satellite

Road

Legend

- Deciduous Edge
- Developed
- Coniferous Forest
- Deciduous Forest
- Emergent Wetland
- Wetlands / Water
- Agriculture
- Blueberries

Layers

Abundance

Land Cover



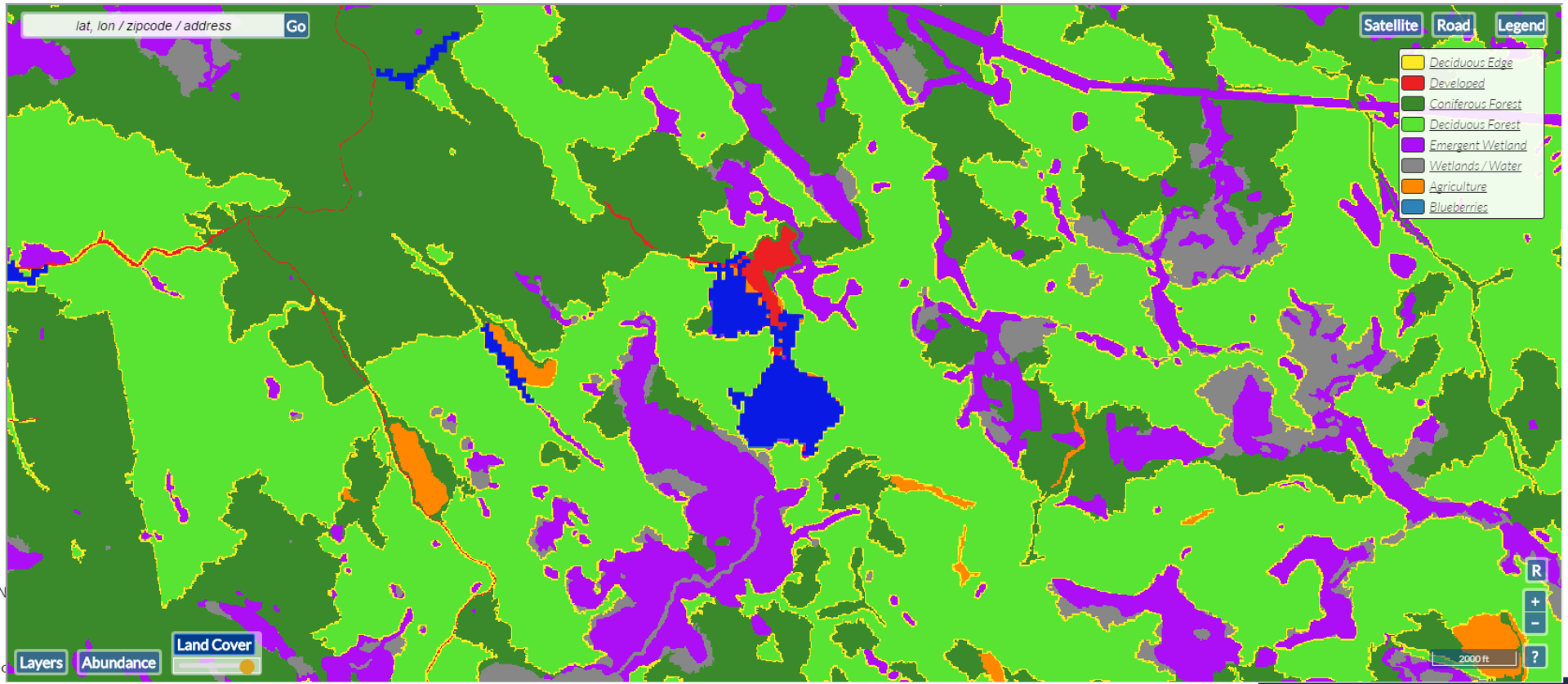
R

+

-

?

2000 ft



lat, lon / zipcode / address

Go

Satellite

Road

Legend

- Low
- Low / Medium
- Medium
- Medium / High
- High

Layers

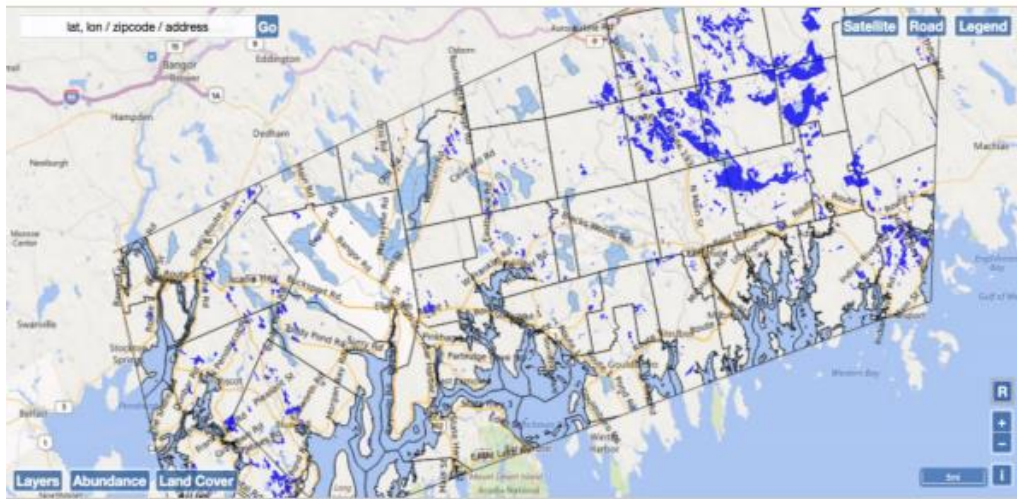
Abundance

Land Cover

R
+
-
?

2000ft

THE UNIVERSITY OF



We want
your
feedback!

Are you interested in discovering the wild bee habitat around your crop fields? BeeMapper will show you! It is currently in development, and we are seeking your feedback to make it a better tool.

Please visit:

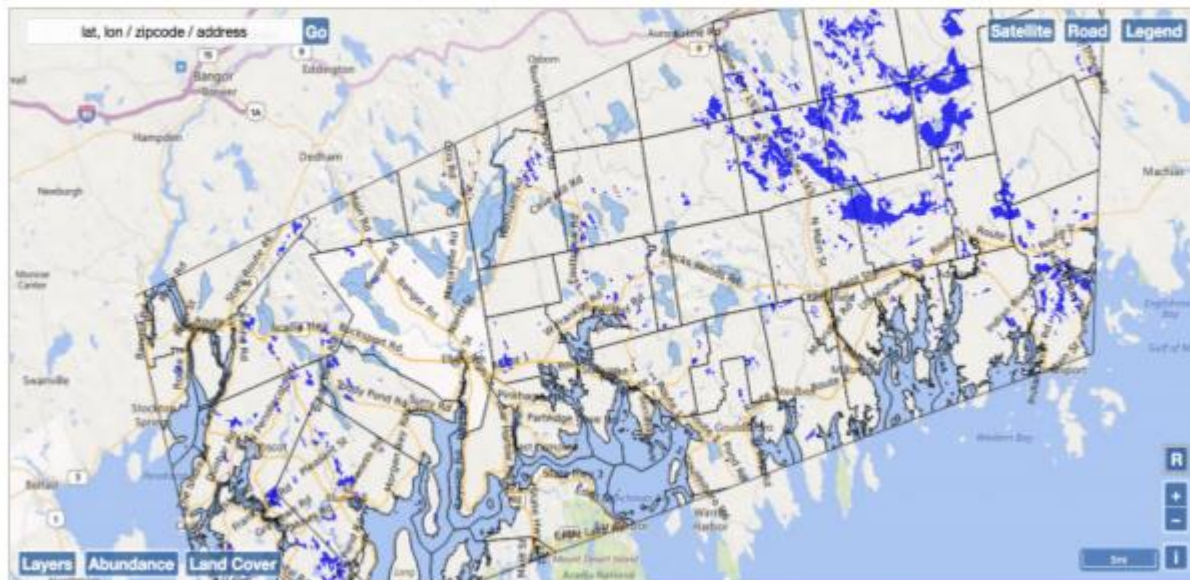
<https://www-dev.umaine.edu/beemapper>

Send comments through BeeMapper feedback form
OR to brianne.duclos@maine.edu. Thank you!

Please visit:
<https://www-dev.umaine.edu/beemapper>

Welcome to BeeMapper

Start BeeMapper by clicking on the map:



[Click here for the BeeMapper User's Guide.](#)

About - User's Guide

[Click here for a printable version of the BeeMapper User's Guide.](#)

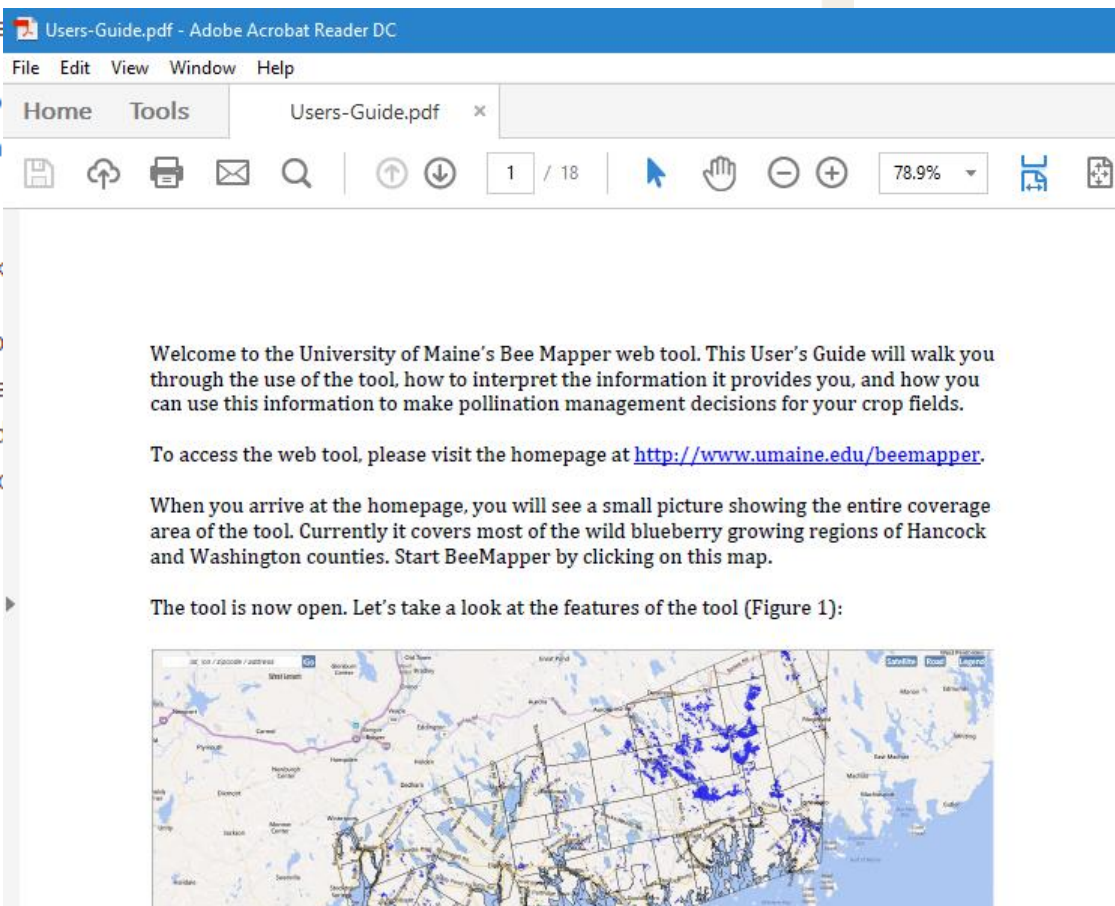
Welcome to the University of Maine's Bee Mapper web tool. This User's Guide will walk you through the use of the tool, how to interpret the information it provides you, and how you can use this information to enhance or conserve wild bee habitat surrounding your wild blueberry fields.

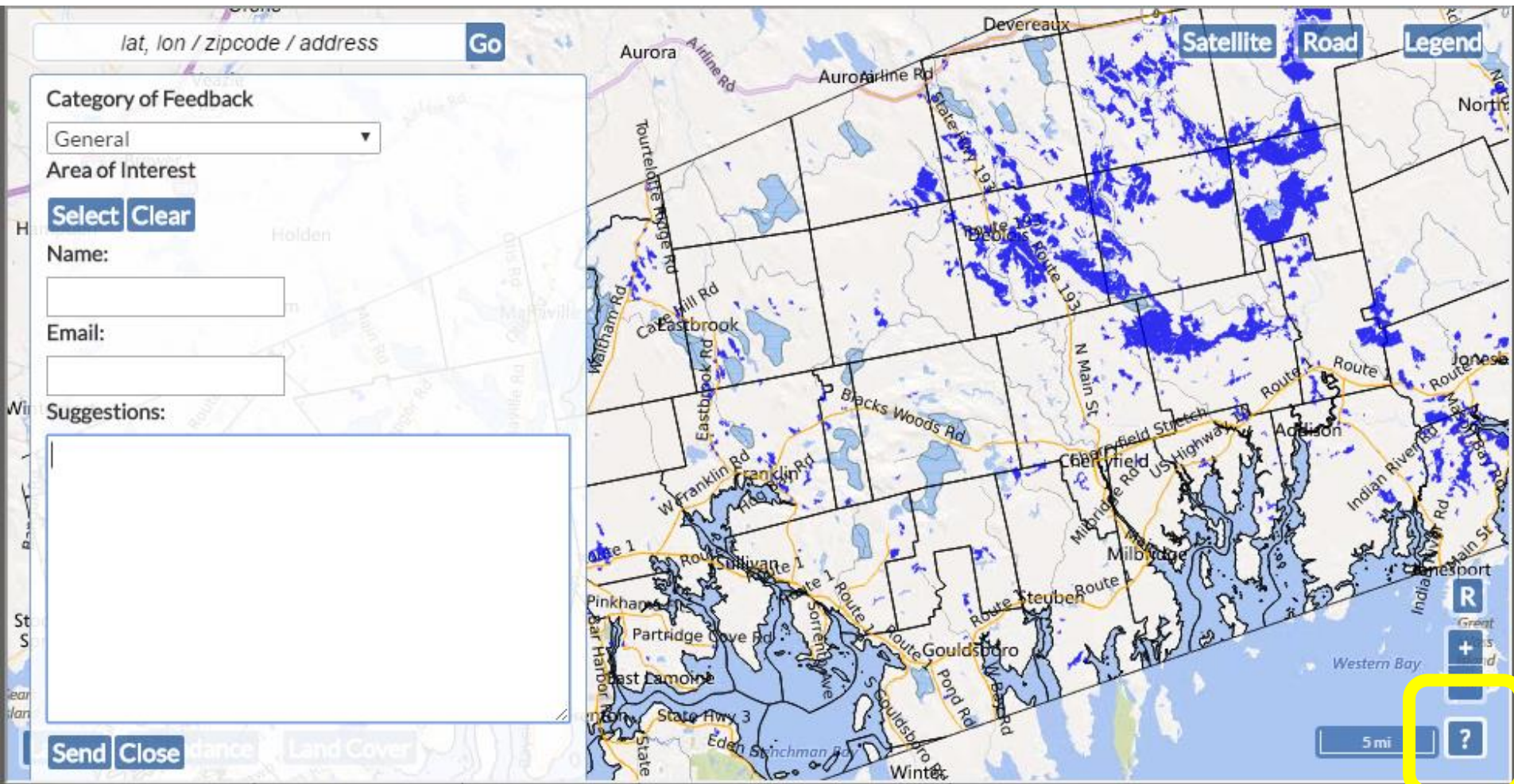
To access the web tool, please visit the

When you arrive at the homepage, you see the tool. Currently it covers most of the counties. Start BeeMapper by clicking

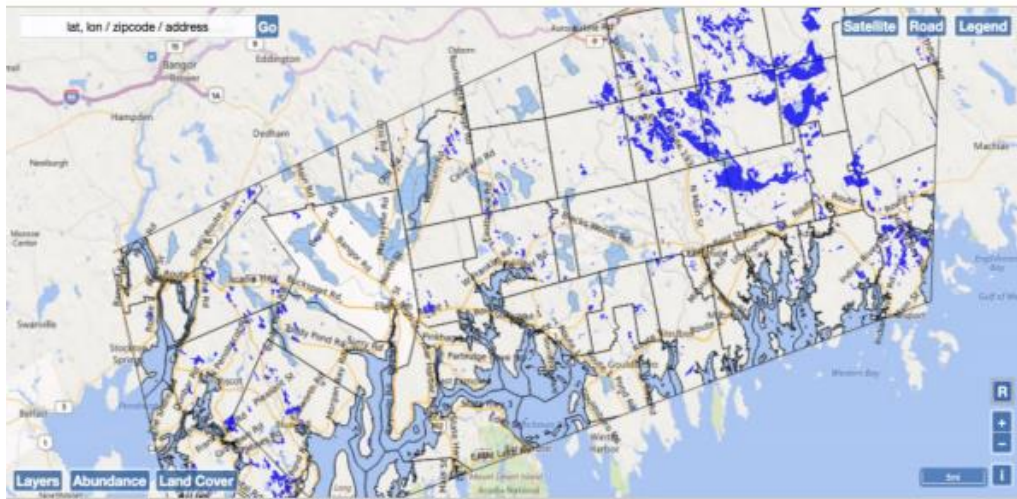
The tool is now open. Let's take a look

- The address locator is in the top
- You can change the map from a landscape using the "Road" and will display the legend for the tool





Send comments through BeeMapper feedback form
OR to brianne.duclos@maine.edu. Thank you!



We want
your
feedback!

Are you interested in discovering the wild bee habitat around your crop fields? BeeMapper will show you! It is currently in development, and we are seeking your feedback to make it a better tool.

Please visit:

<https://www-dev.umaine.edu/beemapper>

Send comments through BeeMapper feedback form
OR to brianne.duclos@maine.edu. Thank you!

Acknowledgments

- Sam Hanes
- Cyndy Loftin
- Frank Drummond
- Shannon Groff
- Kourtney Collum
- Judy Collins
- Elissa Ballman
- Jennifer Lund
- Crystal Thomes
- Wild Blueberry Commission of Maine
- Participating wild blueberry growers
- Technical support provided by the UMaine Faculty Development Center:
 - Andrei Strukov
 - Rob Powell
 - Nate Swan

