

Figure 3. Study fields (circles) located in Yolo County, CA in (3a) 2011 and (3b) 2010. Study fields did not overlap between years. The circle pattern depicts the density of the squash bees observed. The location of other squash fields, not sampled, are indicated by squares (3a) light grey=2011, dark grey = 2010, (3b) light grey=2010, dark grey = 2009.

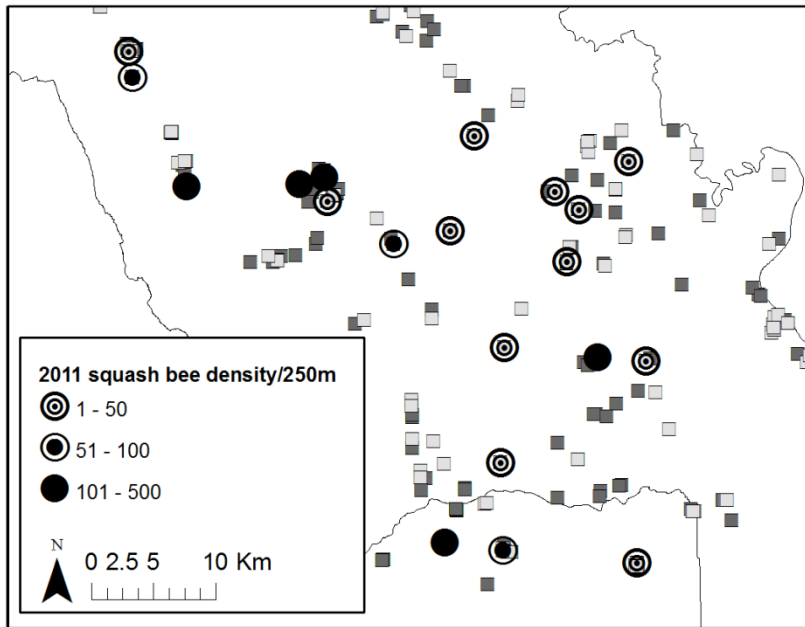


Figure 3b.

