

Sym	Revision Record

Date

**Tolerances**  
 (Except as noted)  
 Decimals:  
 .xxx +/- .005"  
 Fractional:  
 .xx +/- 1/32"  
 Angular +/- 1°

Date:	1/13/12
-------	---------

Scale:	1/4
--------	-----

Drawn By:	NIT
-----------	-----

Part Number:	12001
--------------	-------

Title:	Back Plate
--------	------------

Project Name:	Spelt Dehuller
---------------	----------------

Material:

1/4" Plate

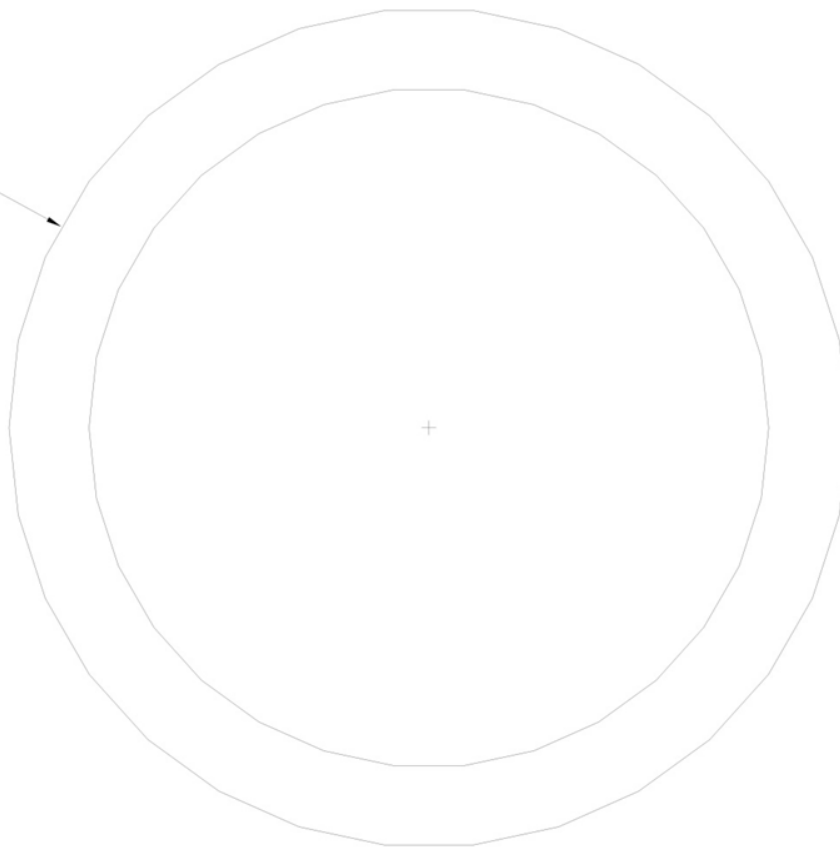
Number Required:

1

Process Notes:

Plasma cut ID .200" undersized bore to size

∅10.500



0.250

Sym

Revision Record

Date

Tolerances

(Except as noted)

Decimals:  
.xxx +/- .005"

Fractional:  
.xx +/- 1/32"

Angular +/- 1°

Date:

1/17/12

Part Number:

12002

Scale:

1/2

Title:

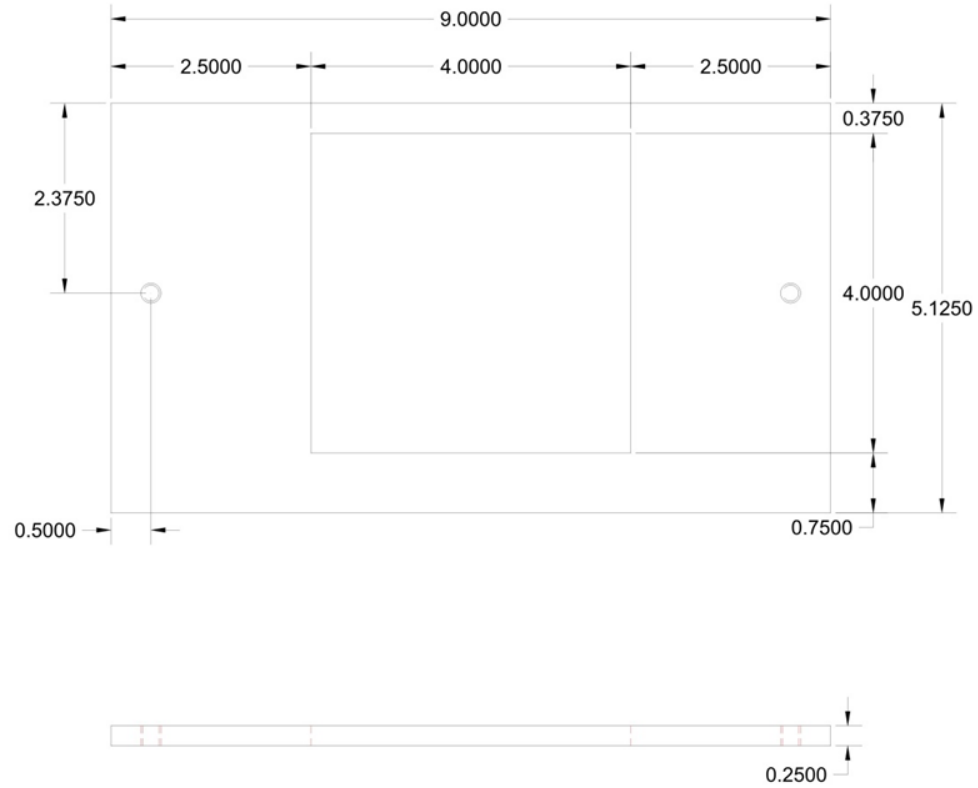
Motor Ring

Drawn By:

NIT

Project Name:

Spelt Dehuller



Sym

Revision Record

Date

Tolerances

(Except as noted)

Decimals:

.xxx +/- .005"

Fractional:

.xx +/- 1/32"

Angular +/- 1°

Date:

1/18/12

Scale:

1/2

Drawn By:

NIT

Part Number:

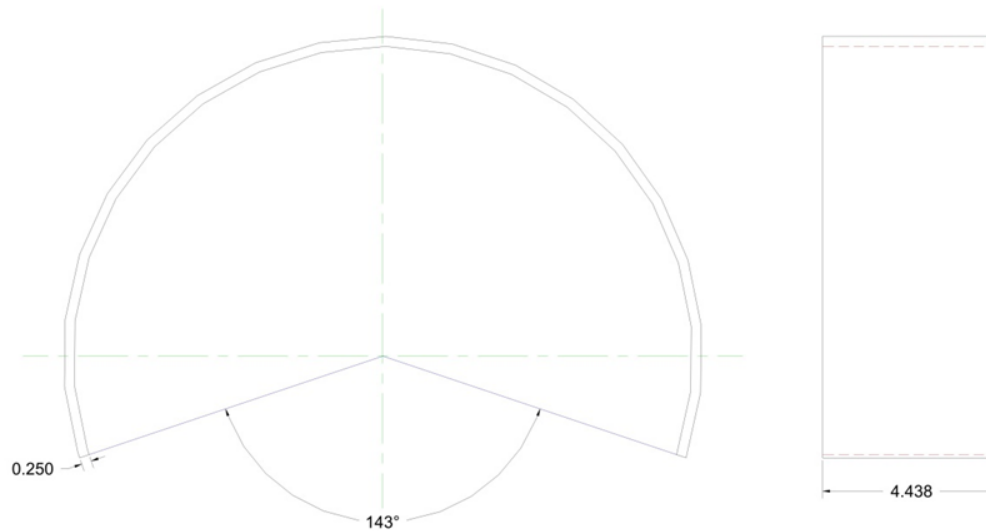
12003

Title:

Aspirator Mount

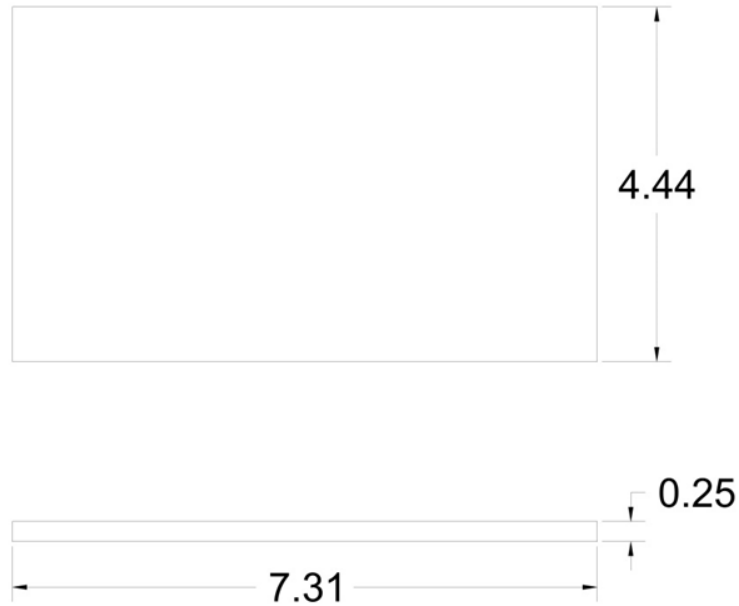
Project Name:

Spelt Dehuller



Blank is 29.837" long plus the extra material required for the plate roll

Sym	Revision Record	Date	<b>Tolerances</b> (Except as noted) Decimals: .xxx +/- .005" Fractional: .xx +/- 1/32" Angular +/- 1°	Date:	1/18/12	Part Number:	12004
				Scale:	1/4	Title:	Shell
				Drawn By:	NIT	Project Name:	Spelt Dehuller



Sym

Revision Record

Date

Tolerances

(Except as noted)

Decimals:  
.xxx +/- .005"Fractional:  
.xx +/- 1/32"

Angular +/- 1°

Date:

1/25/12

Scale:

1/2

Drawn By:

NIT

Part Number:

12005

Title:

Lower Shell Sides

Project Name:

Spelt Dehuller

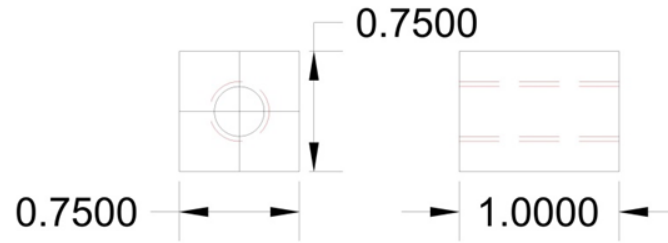
Material:

3/4 x 3/4 1018 CF

Number Required:

3

Process Notes:



Sym Revision Record

Date

**Tolerances**

(Except as noted)

Decimals:  
.xxx +/- .005"

Fractional:  
.xx +/- 1/32"

Angular +/- 1°

Date: 1/25/12

Scale: Full

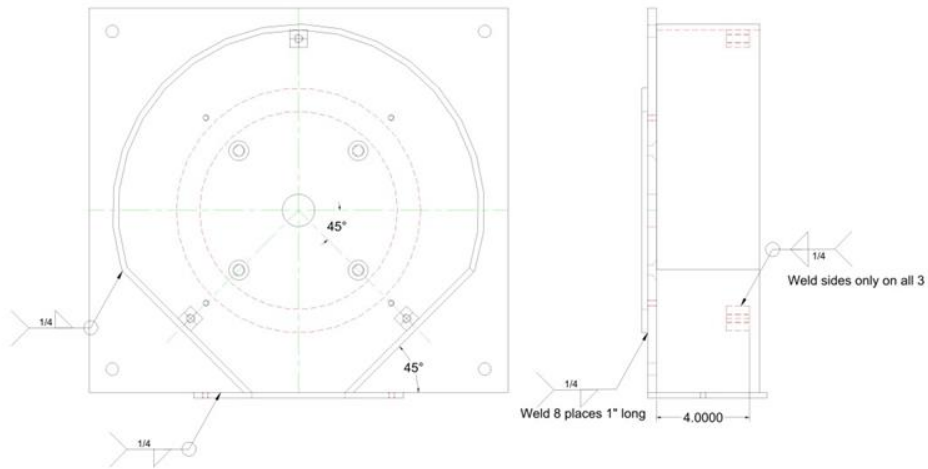
Drawn By: NIT

Part Number: 12006

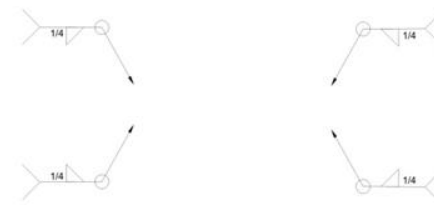
Title: Screen Holder Mounts

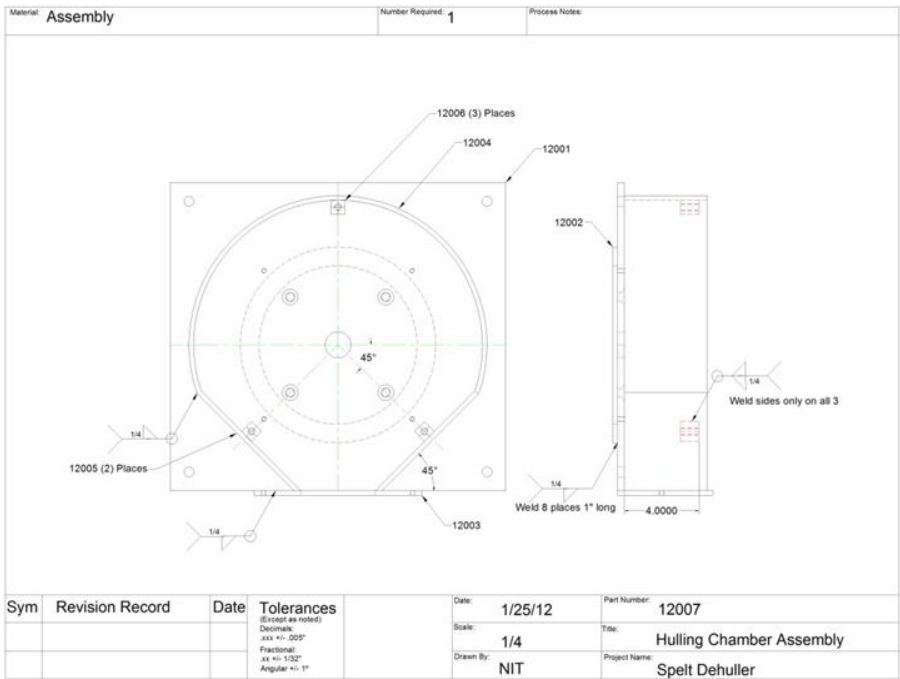
Project Name: Spelt Dehuller

Material: **Assembly**      Number Required: **1**      Process Notes:



Sym	Revision Record	Date	Tolerances (Except as noted) Decimals: .xxx +/- .005" Fractional: .xx +/- 1/32" Angular +/- 1°	Date: 1/25/12	Part Number: 12007
				Scale: 1/4 <td>Title: Hulling Chamber Assembly</td>	Title: Hulling Chamber Assembly
				Drawn By: NIT <td>Project Name: Spelt Dehuller</td>	Project Name: Spelt Dehuller







Material:

1/4 AR400 Wear Plate

Number Required:

1

Process Notes:

Laser Cut

Ø0.281 (4) Places

Ø10.625

Ø1.400

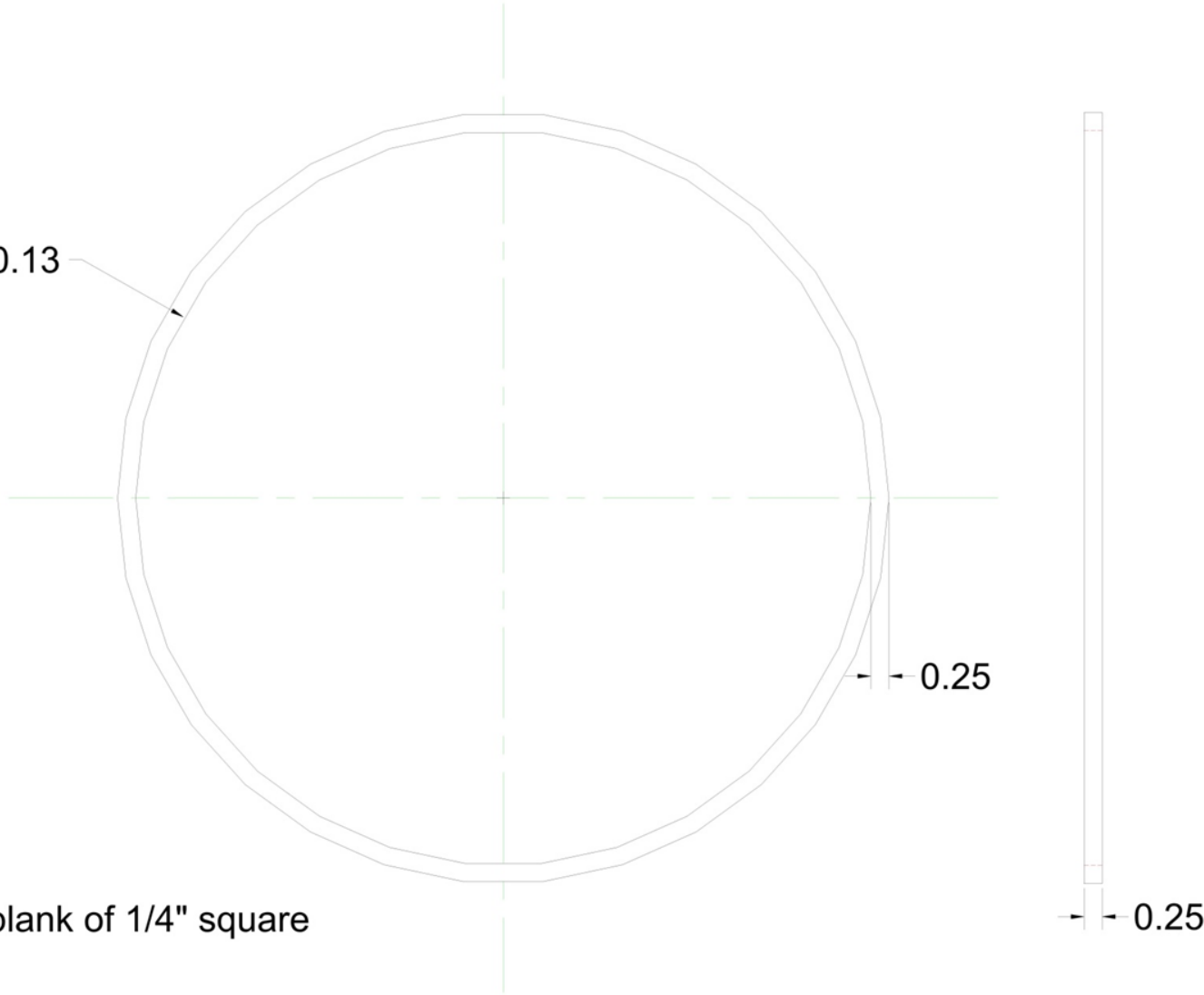
45°

0.250

Sym	Revision Record	Date	Tolerances (Except as noted) Decimals: .xxx +/- .005" Fractional: .xx +/- 1/32" Angular +/- 1°

Date:	1/25/12
Scale:	1/2
Drawn By:	NIT

Part Number:	12008
Title:	Back Wear Plate
Project Name:	Spelt Dehuller



∅10.13

0.25

32.59" blank of 1/4" square

0.25

Sym	Revision Record	Date	Tolerances (Except as noted)
			Decimals: .xxx +/- .005"
			Fractional: .xx +/- 1/32"
			Angular +/- 1°

Date: 1/25/12

Part Number: 12009

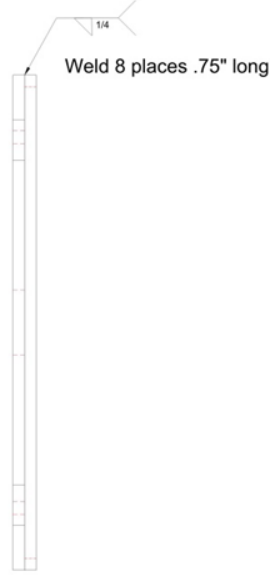
Scale: 1/2

Title: Back Screen Holder Ring

Drawn By: NIT

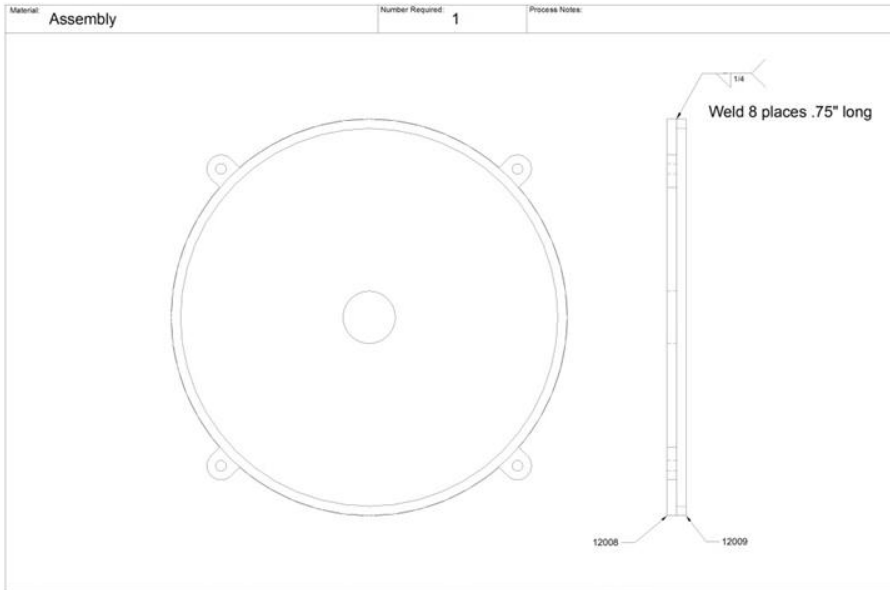
Project Name: Spelt Dehuller

Material: <b>Assembly</b>	Number Required: <b>1</b>	Process Notes:
---------------------------	---------------------------	----------------



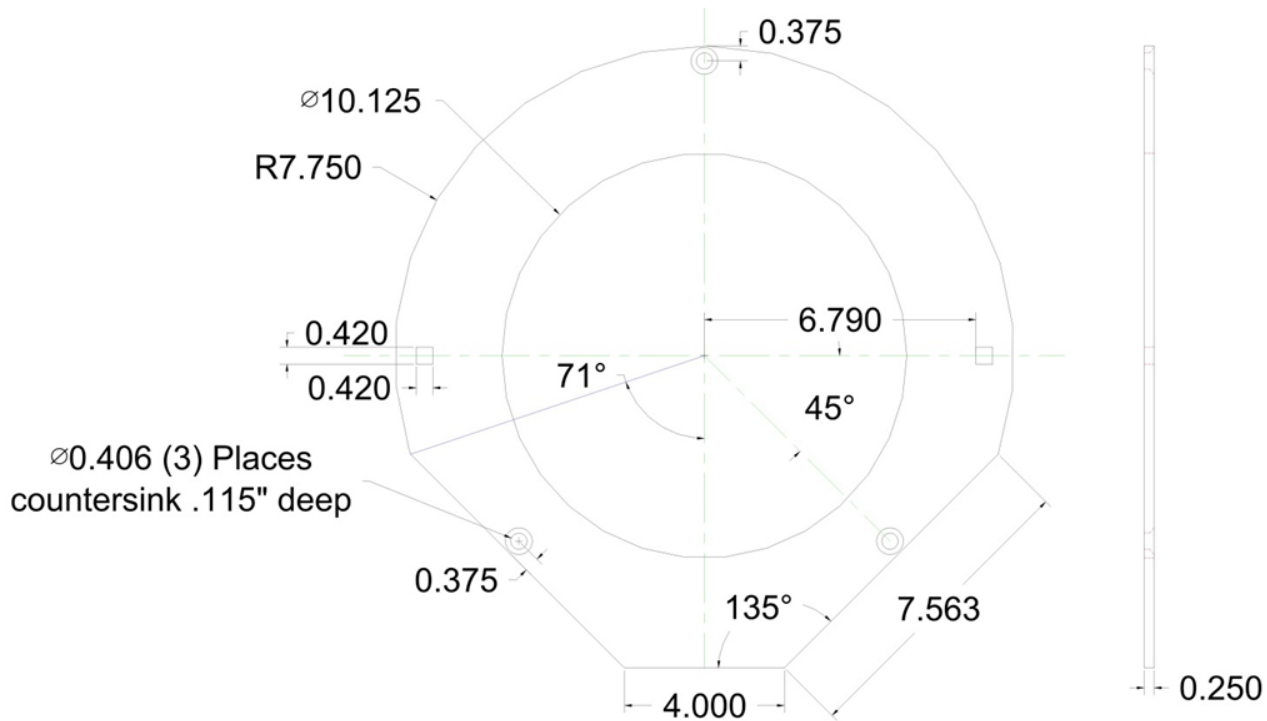
Sym	Revision Record	Date	Tolerances (Except as noted) Decimals: .xxx +/- .005" Fractional: .xx +/- 1/32" Angular +/- 1°	Date: 1/25/12	Part Number: 12010
				Scale: 1/2	Title: Back Wear Plate Assembly
				Drawn By: NIT	Project Name: Spelt Dehuller





<b>Sym</b>	<b>Revision Record</b>	<b>Date</b>	<b>Tolerances</b> <small>(Except as noted)</small> Decimal: XX +/- .005" Fractional: XX +/- 1/32" Angular +/- 1°	<b>Date:</b> 1/25/12	<b>Part Number:</b> 12010
				<b>Scale:</b> 1/2	<b>Title:</b> Back Wear Plate Assembly
				<b>Drawn By:</b> NIT	<b>Project Name:</b> Spelt Dehuller





Sym

Revision Record

Date

Tolerances

(Except as noted)

Decimals:  
.xxx +/- .005"Fractional:  
.xx +/- 1/32"

Angular +/- 1°

Date:

1/25/12

Part Number:

12011

Scale:

1/4

Title:

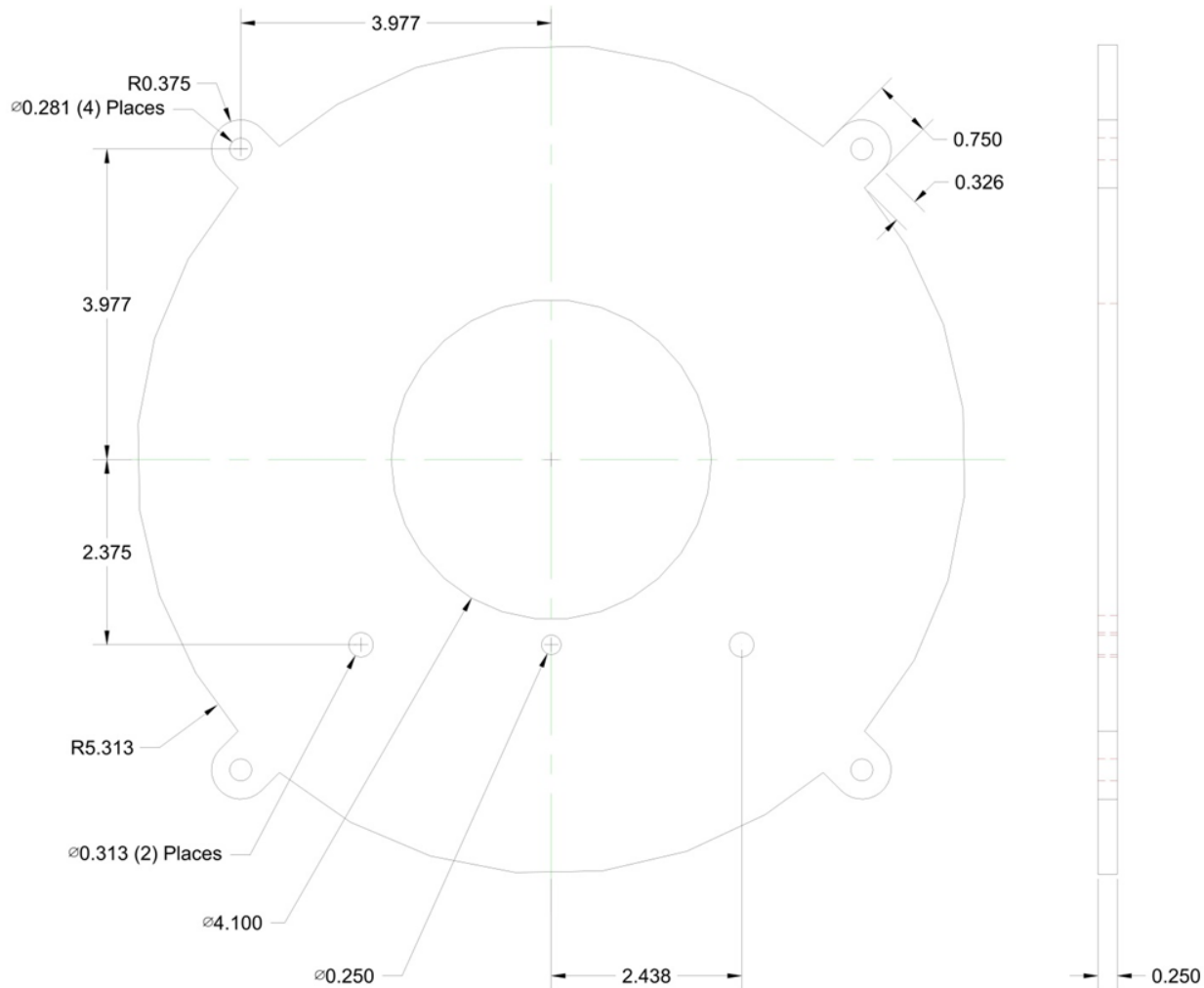
Front Screen Holder

Drawn By:

NIT

Project Name:

Spelt Dehuller



Sym

Revision Record

Date

Tolerances

(Except as noted)

Decimals:

.xxx +/- .005"

Fractional:

.xx +/- 1/32"

Angular +/- 1°

Date:

7/29/12

Scale:

1/2

Drawn By:

NIT

Part Number:

12012

Title:

Front Wear Plate

Project Name:

Spelt Dehuller

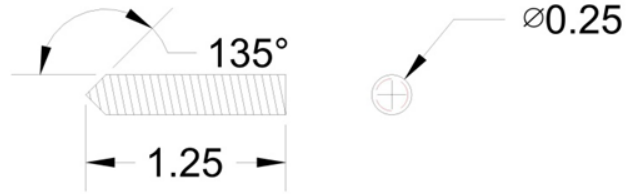
Material:

1/4-20 All Thread

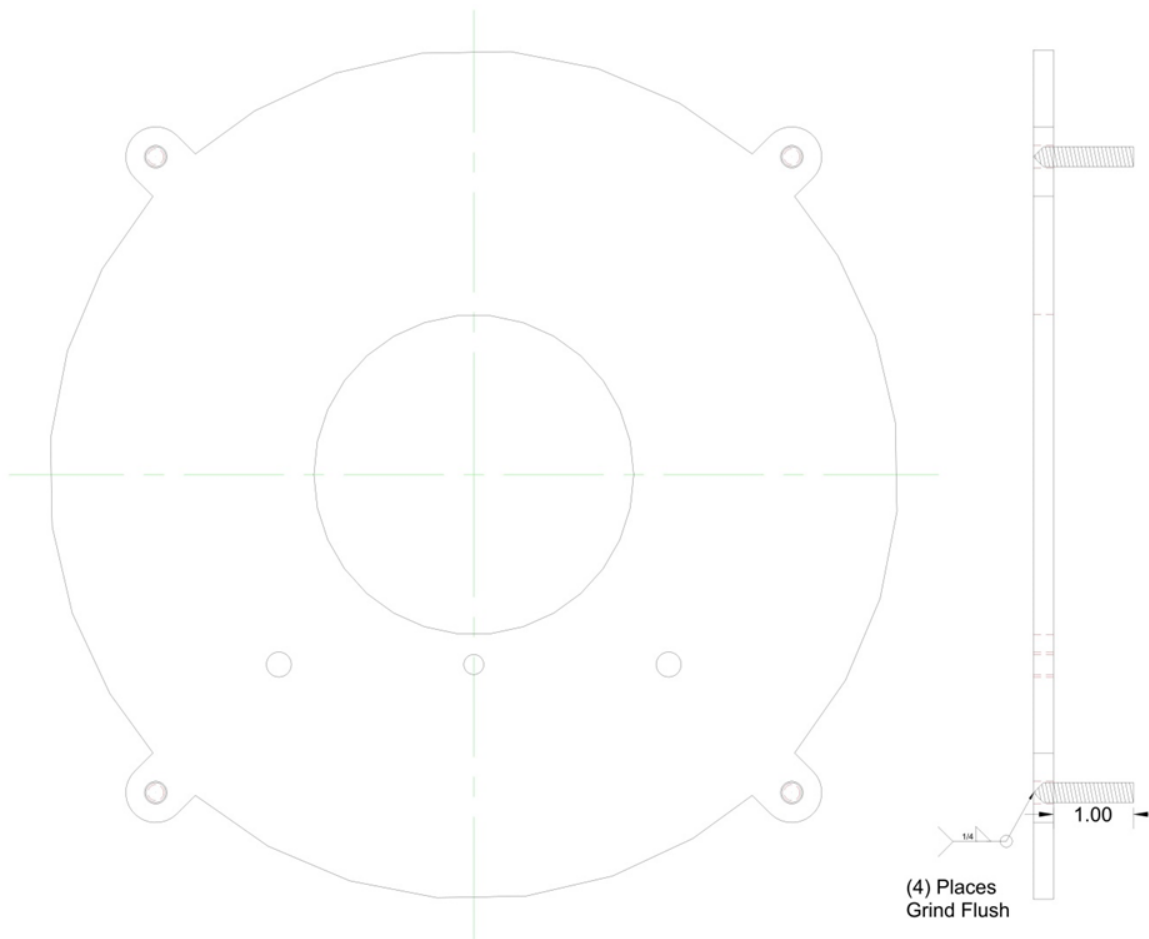
Number Required:

4

Process Notes:



Sym	Revision Record	Date	<b>Tolerances</b> (Except as noted) Decimals: .xxx +/- .005" Fractional: .xx +/- 1/32" Angular +/- 1°	Date:	7/29/12	Part Number:	12013
				Scale:	Full	Title:	Front Wear Plate Bolt
				Drawn By:	NIT	Project Name:	Spelt Dehuller



Sym

Revision Record

Date

Tolerances

(Except as noted)

Decimals:  
.xxx +/- .005"Fractional:  
.xx +/- 1/32"

Angular +/- 1°

Date:

7/29/12

Scale:

1/2

Drawn By:

NIT

Part Number:

12014

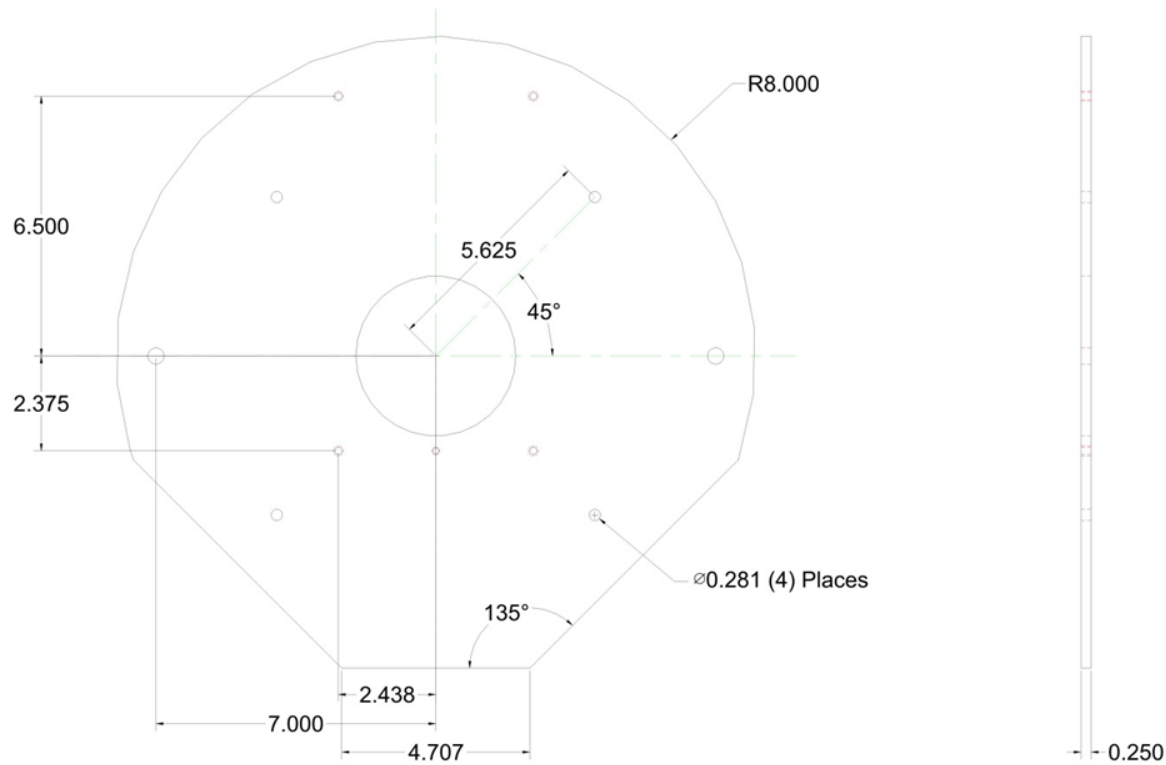
Title:

Front Wear Plate Assembly

Project Name:

Spelt Dehuller





Sym

Revision Record

Date

Tolerances

(Except as noted)

Decimals:

.xxx +/- .005"

Fractional:

.xx +/- 1/32"

Angular +/- 1°

Date:

7/29/12

Scale:

1/4

Drawn By:

NIT

Part Number:

12015

Title:

Front Cover

Project Name:

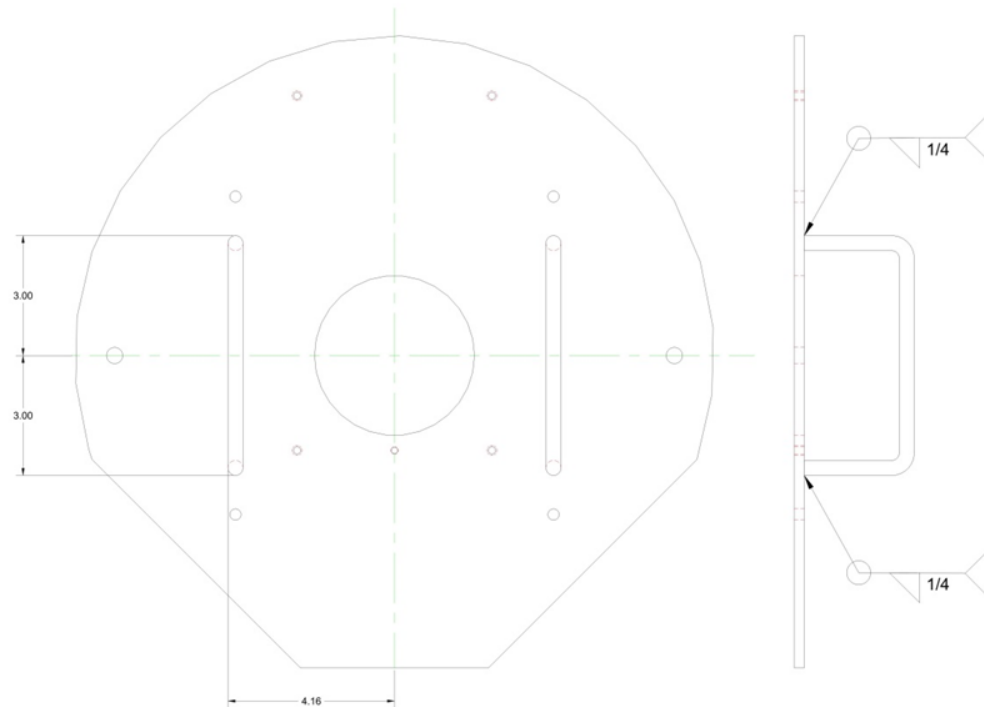
Spelt Dehuller



Sym	Revision Record	Date	Tolerances (Except as noted) Decimals: .xxx +/- .005" Fractional: .xx +/- 1/32" Angular +/- 1°

Date:	7/29/12
Scale:	1/2
Drawn By:	NIT

Part Number:	12016
Title:	Front Cover Handle
Project Name:	Spelt Dehuller



Sym

Revision Record

Date

Tolerances

(Except as noted)

Decimals:

.xxx +/- .005"

Fractional:

.xx +/- 1/32"

Angular +/- 1°

Date:

7/29/12

Scale:

1/4

Drawn By:

NIT

Part Number:

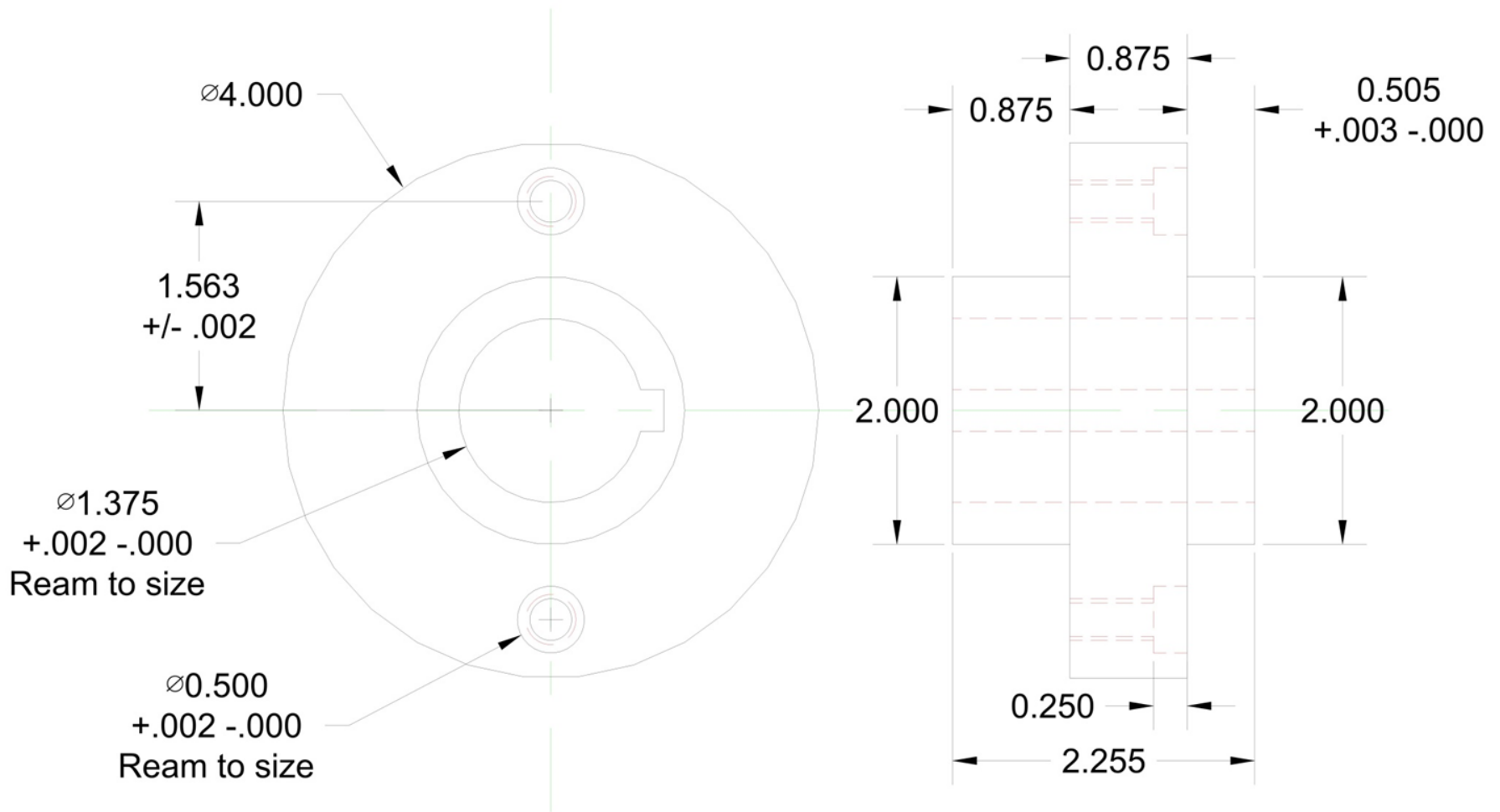
12017

Title:

Front Cover Assembly

Project Name:

Spelt Dehuller



Sym

Revision Record

Date

Tolerances

(Except as noted)

Decimals:

.xxx  $\pm$  .005"

Fractional:

.xx  $\pm$  1/32"Angular  $\pm$  1°

Date:

8/6/12

Scale:

Full

Drawn By:

NIT

Part Number:

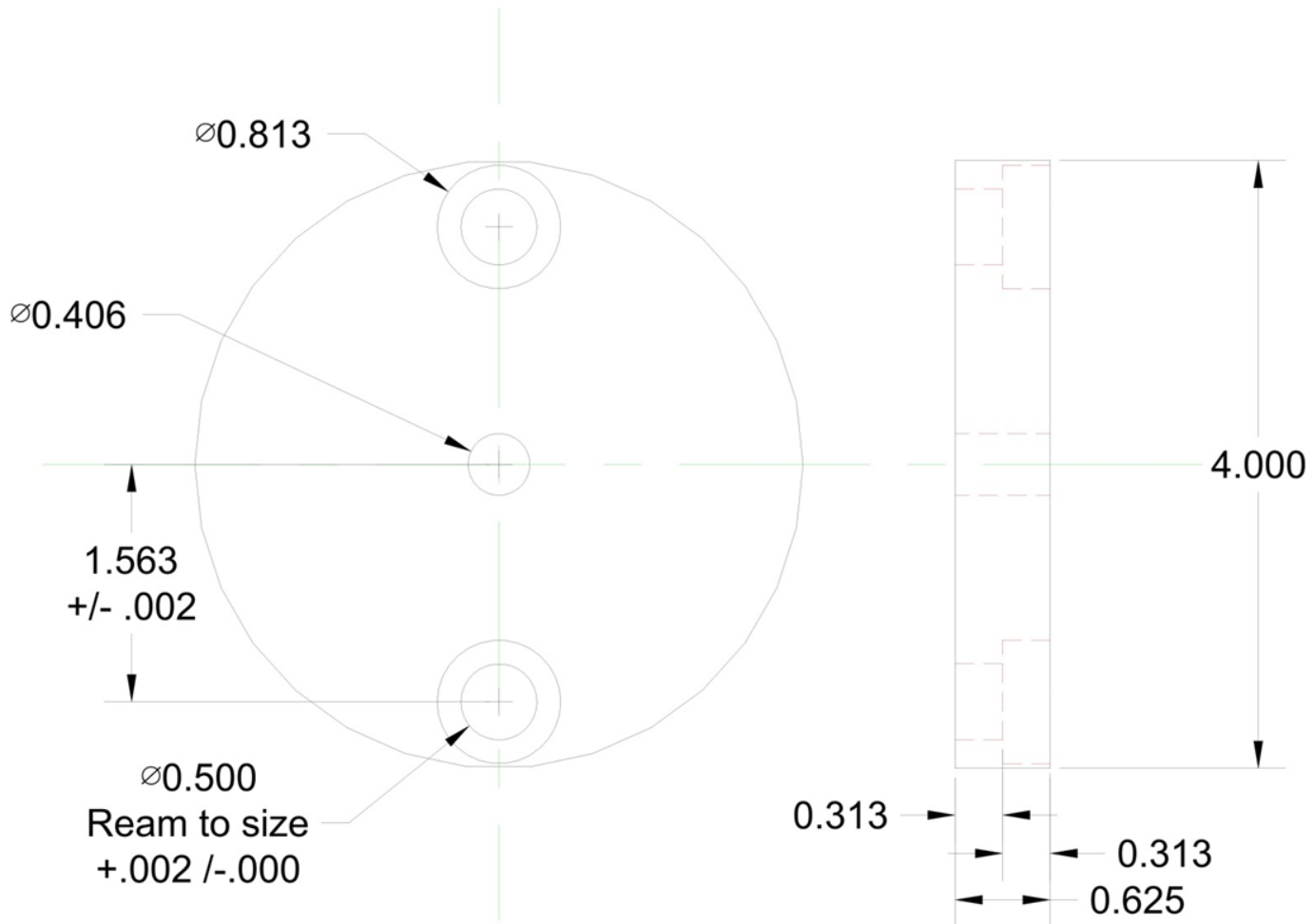
12018

Title:

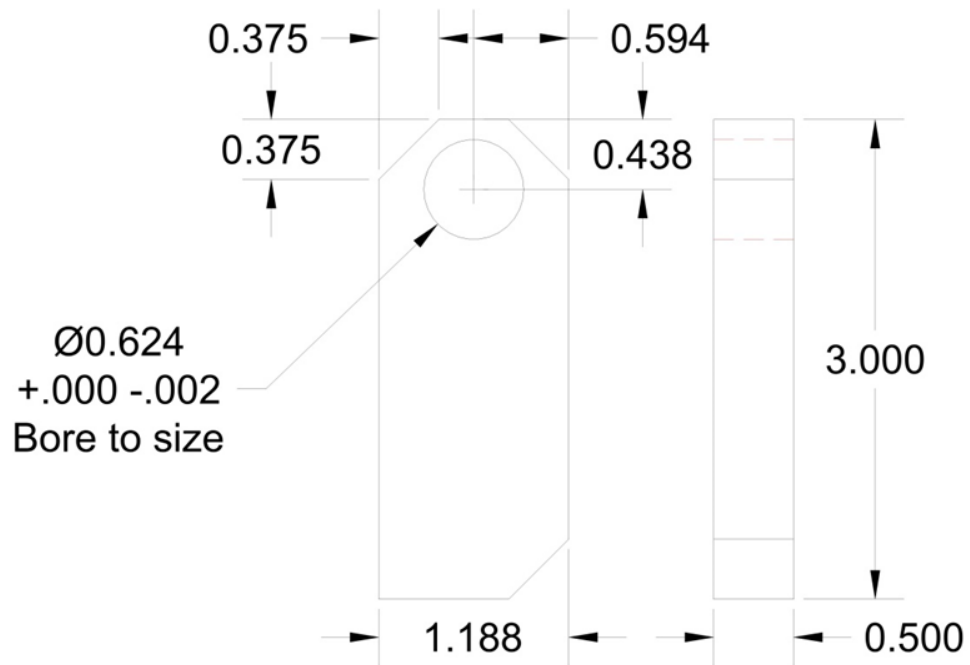
Hammer Holder

Project Name:

Spelt Dehuller



Sym	Revision Record	Date	<b>Tolerances</b> (Except as noted) Decimals: .xxx +/- .005" Fractional: .xx +/- 1/32" Angular +/- 1°	Date:	8/6/12	Part Number:	12019
				Scale:	Full	Title:	Hammer Holder Front
				Drawn By:	NIT	Project Name:	Spelt Dehuller



Sym	Revision Record	Date	Tolerances
-----	-----------------	------	------------

(Except as noted)

Decimals:  
.xxx +/- .005"

Fractional:  
.xx +/- 1/32"  
Angular +/- 1°

Date:

8/6/12

Part Number:

12020

Scale:

Full

Title:

Hammer Arm

Drawn By:

NIT

Project Name:

Spelt Dehuller

Material:

1/2" AR 400 Wear Plate

Number Required:

2

Process Notes:

Laser Cut

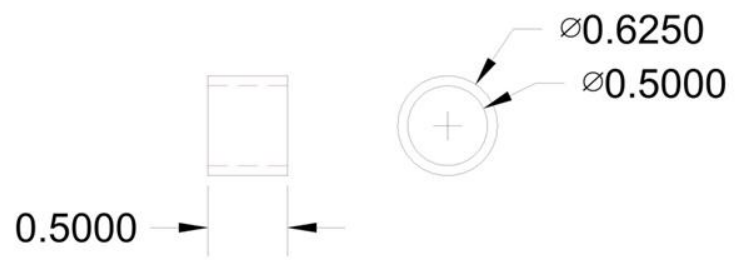


Sym	Revision Record	Date	<b>Tolerances</b> (Except as noted) Decimals: .xxx +/- .005" Fractional: .xx +/- 1/32" Angular +/- 1°	Date:	8/6/12	Part Number:	12021
				Scale:	Full	Title:	Hammer Face
				Drawn By:	NIT	Project Name:	Spelt Dehuller

Material: Purchased Part

Number Required: 2

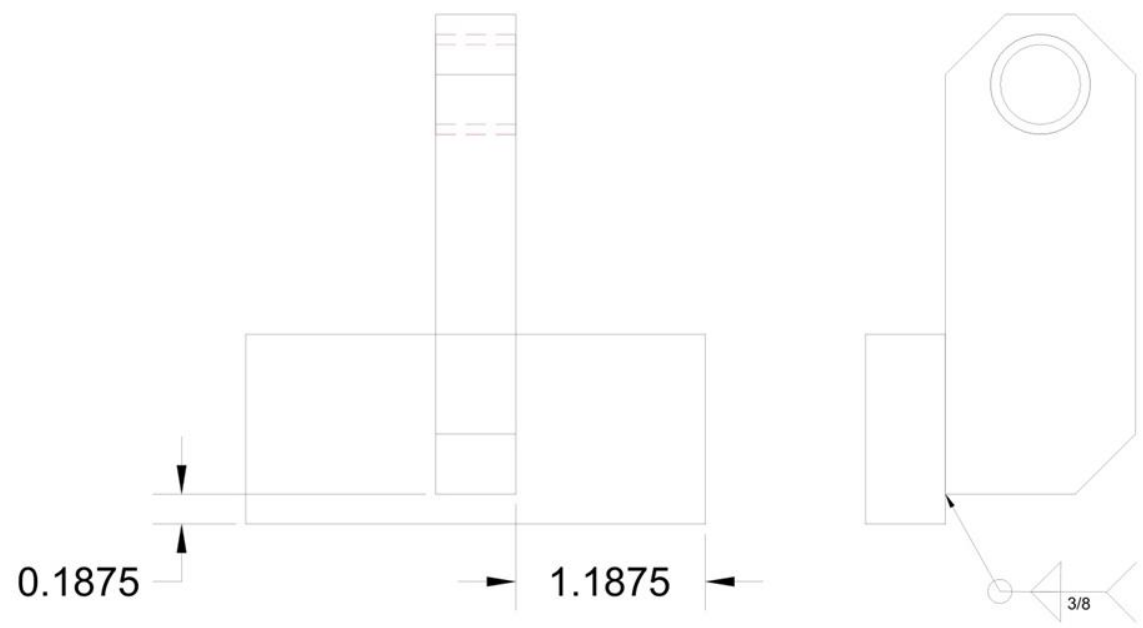
Process Notes:



MSC Order #: 06453641

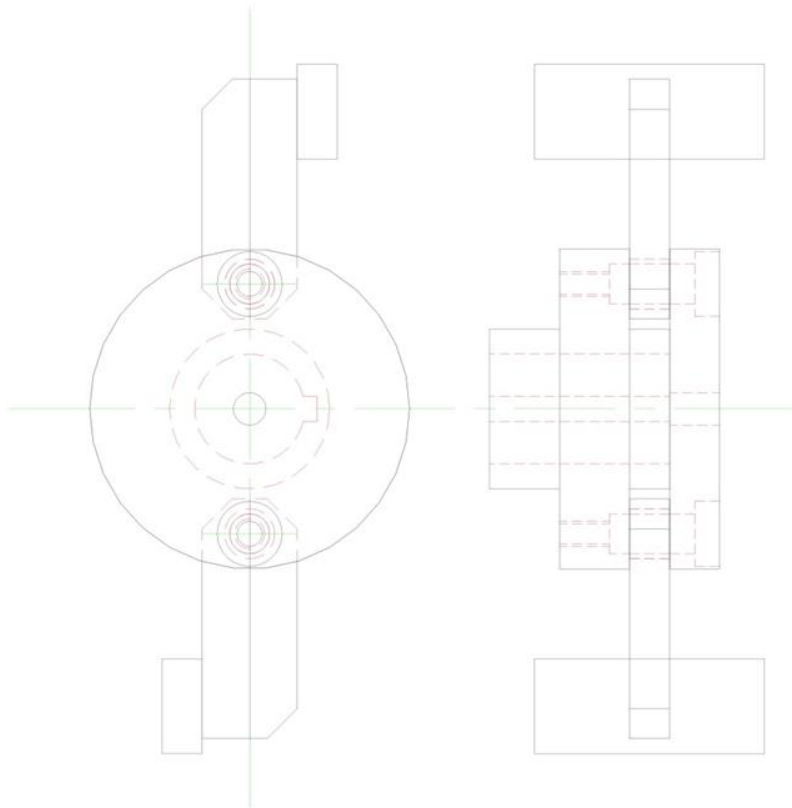
Sym	Revision Record	Date	Tolerances (Except as noted) Decimals: .xxx +/- .005" Fractional: .xx +/- 1/32" Angular +/- 1°	Date:	8/6/12	Part Number:	12022
				Scale:	Full	Title:	Hammer Bushing
				Drawn By:	NIT	Project Name:	Spelt Dehuller





Weld both sides and bottom

Sym	Revision Record	Date	<b>Tolerances</b> (Except as noted) Decimals: .xxx +/- .005" Fractional: .xx +/- 1/32" Angular +/- 1°	Date:	8/6/12	Part Number:	12023	
				Scale:	Full	Title:	Hammer Assembly	
				Drawn By:	NIT	Project Name:	Spelt Dehuller	



Sym

Revision Record

Date

Tolerances

(Except as noted)

Decimals:

.xxx +/- .005"

Fractional:

.xx +/- 1/32"

Angular +/- 1°

Date:

8/6/12

Scale:

1/2

Drawn By:

NIT

Part Number:

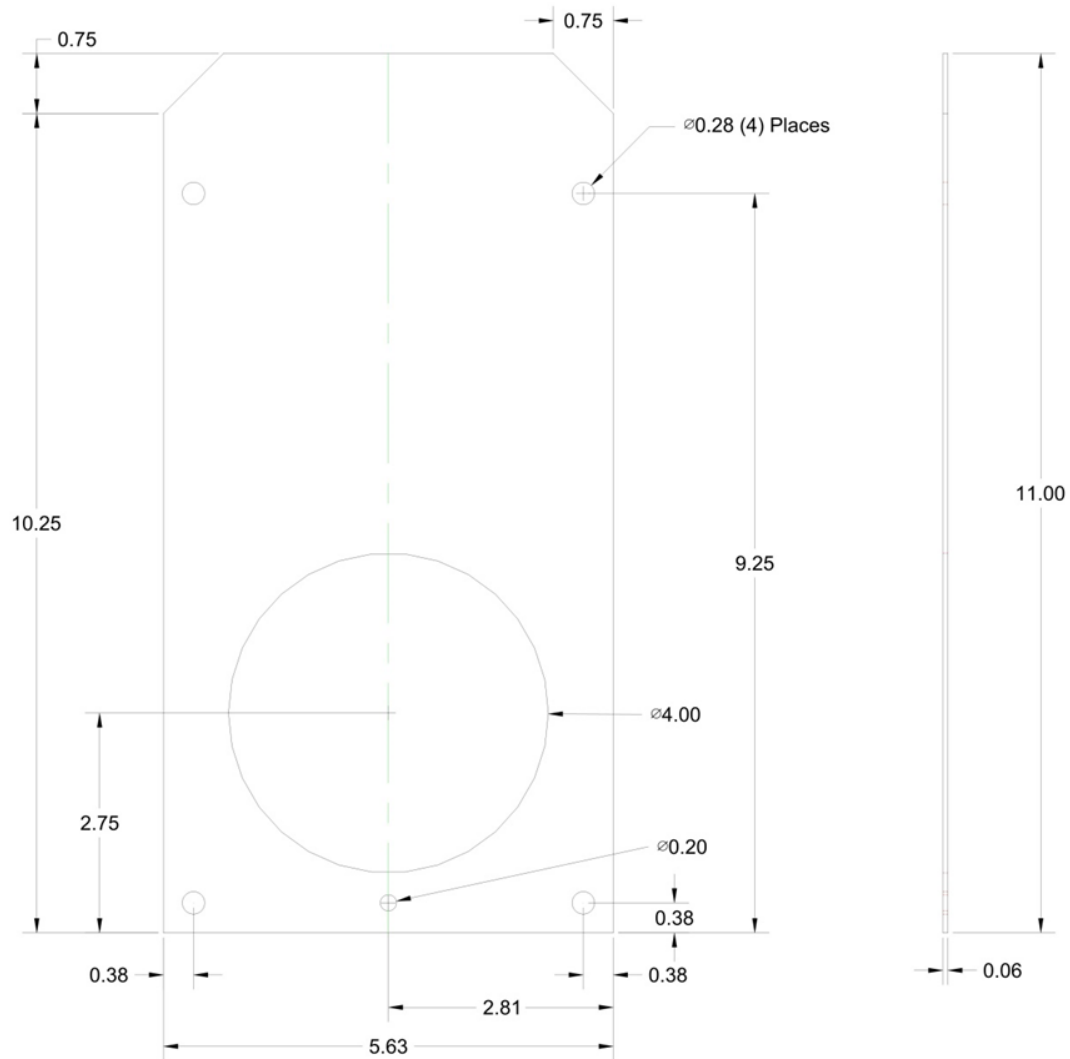
12024

Title:

Hammer Holder Assembly

Project Name:

Spelt Dehuller



Sym

Revision Record

Date

Tolerances

(Except as noted)

Decimals:

.xxx +/- .005"

Fractional:

.xx +/- 1/32"

Angular +/- 1°

Date:

9/26/12

Scale:

1/2

Drawn By:

NIT

Part Number:

12025

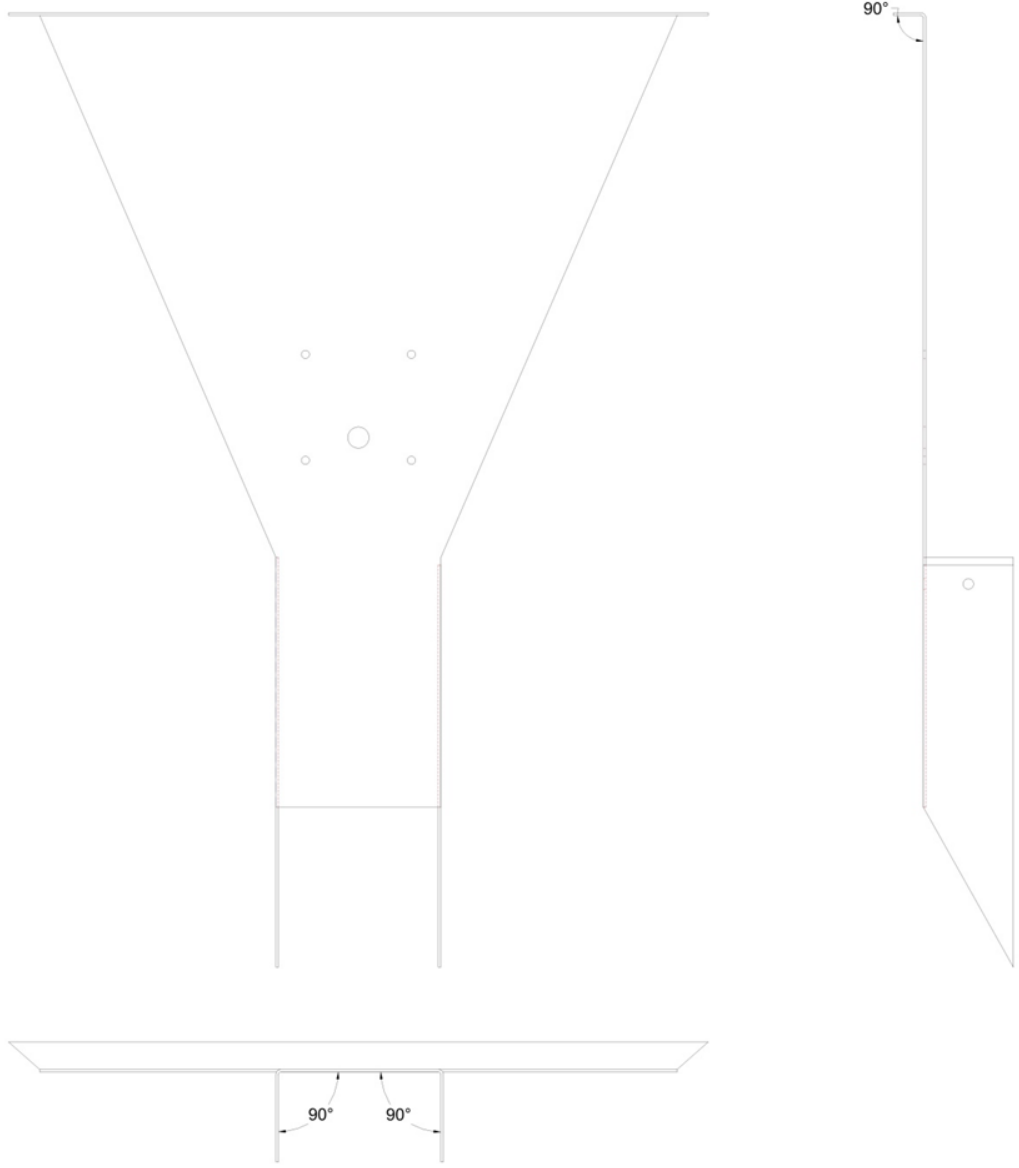
Title:

Hopper Mount

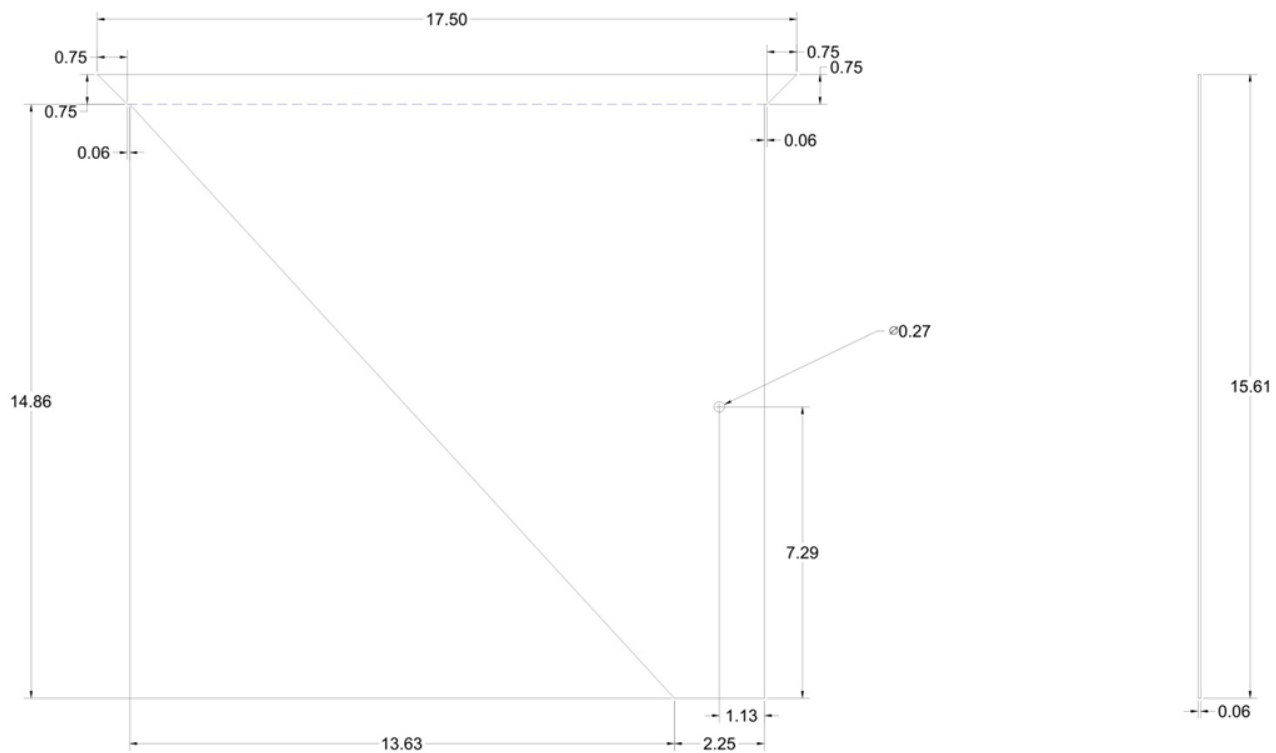
Project Name:

Spelt Dehuller





Sym	Revision Record	Date	<b>Tolerances</b> (Except as noted) Decimals: .xxx +/- .005" Fractional: .xx +/- 1/32" Angular +/- 1°	Date:	9/26/12	Part Number:	12026B
				Scale:	1/4	Title:	Hopper Front Formed
				Drawn By:	NIT	Project Name:	Spelt Dehuller



Sym

Revision Record

Date

Tolerances

(Except as noted)

Decimals:

.xxx +/- .005"

Fractional:

.xx +/- 1/32"

Angular +/- 1°

Date:

9/26/12

Scale:

1/4

Drawn By:

NIT

Part Number:

12027

Title:

Hopper Side

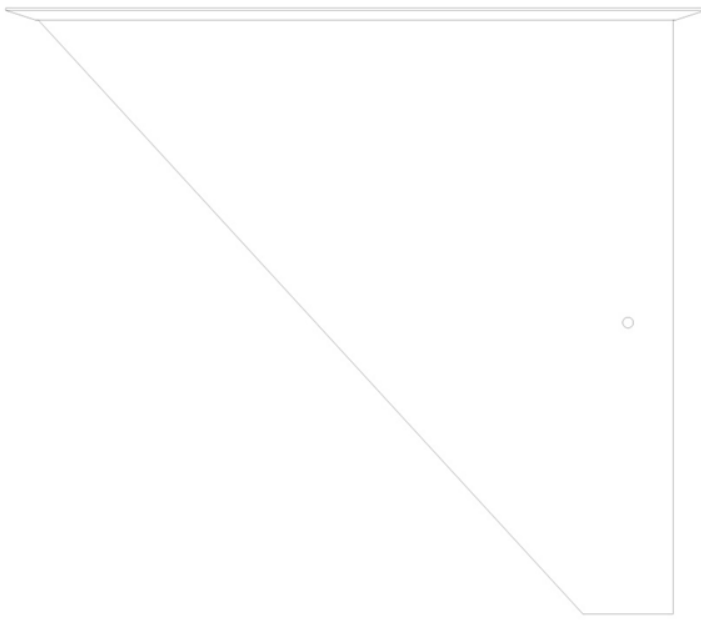
Project Name:

Spelt Dehuller

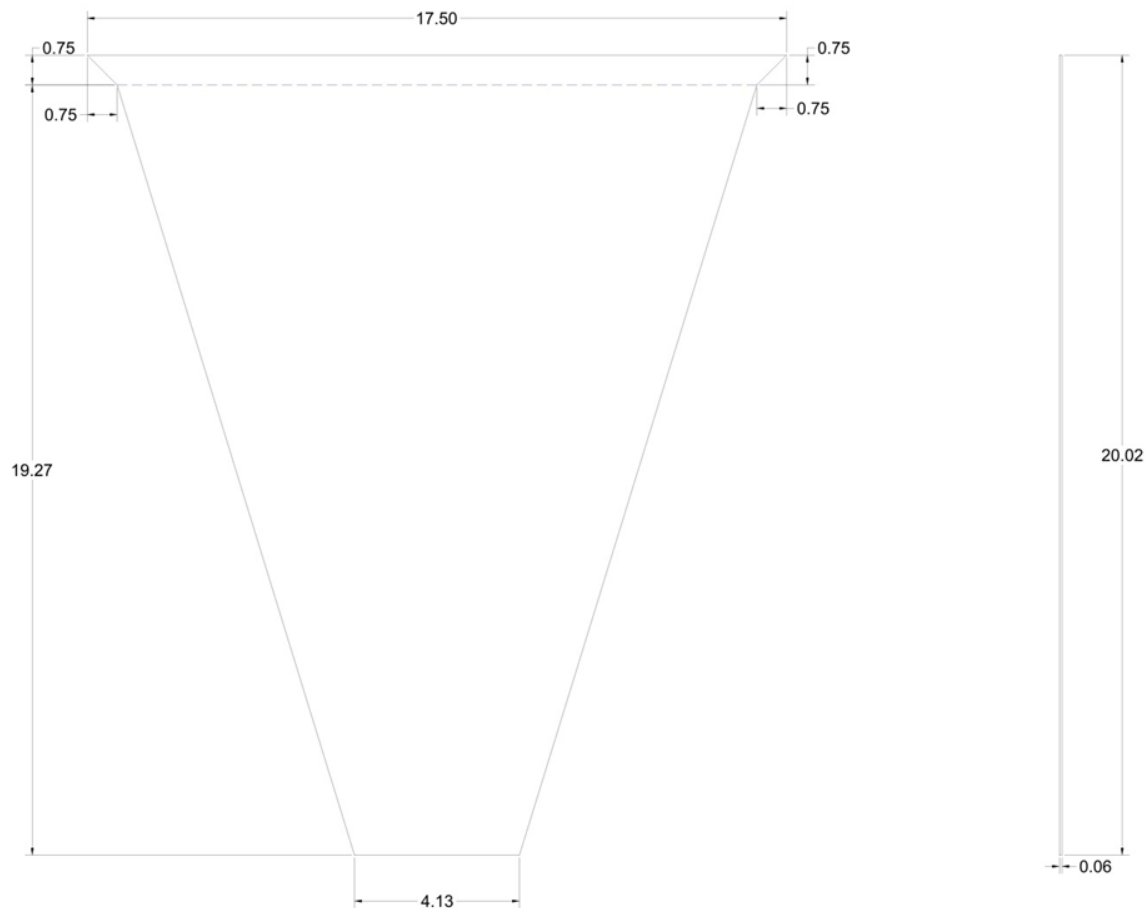
Material: Part 12027

Number Required: 2

Process Notes: Hole on RH Side;LH Side mirror of RH Side



Sym	Revision Record	Date	<b>Tolerances</b> (Except as noted) Decimals: .xxx +/- .005" Fractional: .xx +/- 1/32" Angular +/- 1°	Date:	9/26/12	Part Number:	12027B
				Scale:	1/4	Title:	Hopper Side Formed
				Drawn By:	NIT	Project Name:	Spelt Dehuller



Sym

Revision Record

Date

Tolerances

(Except as noted)

Decimals:

.xxx +/- .005"

Fractional:

.xx +/- 1/32"

Angular +/- 1°

Date:

9/26/12

Scale:

1/4

Drawn By:

NIT

Part Number:

12028

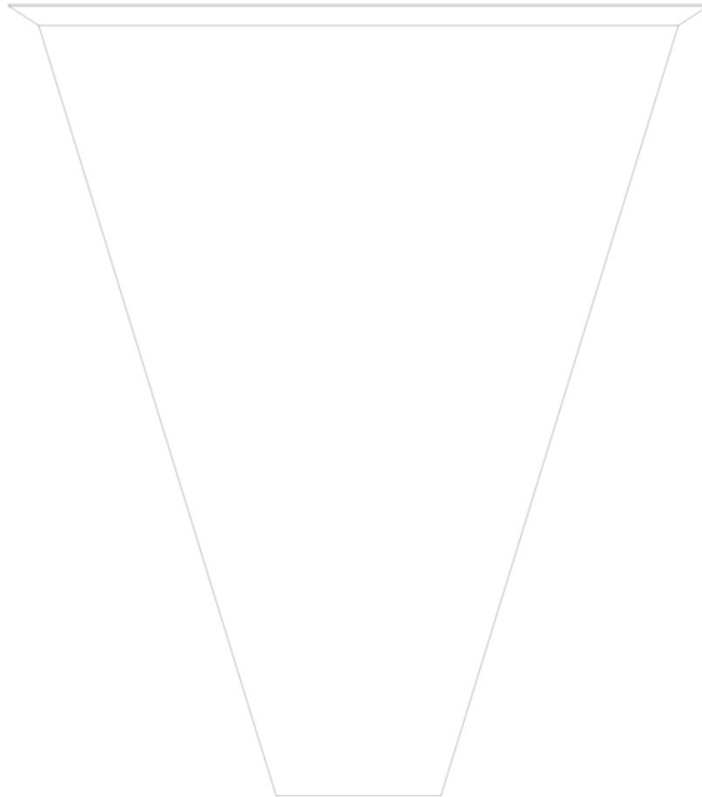
Title:

Hopper Back

Project Name:

Spelt Dehuller





135°

Sym

Revision Record

Date

Tolerances

(Except as noted)

Decimals:  
.xxx +/- .005"Fractional:  
.xx +/- 1/32"

Angular +/- 1°

Date:

9/26/12

Scale:

1/4

Drawn By:

NIT

Part Number:

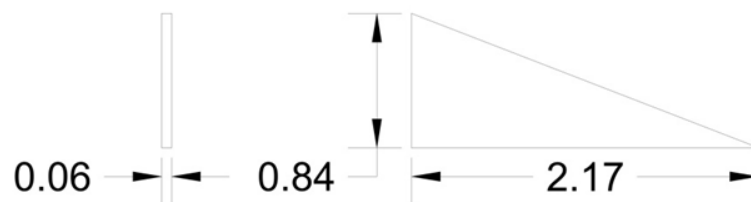
12028B

Title:

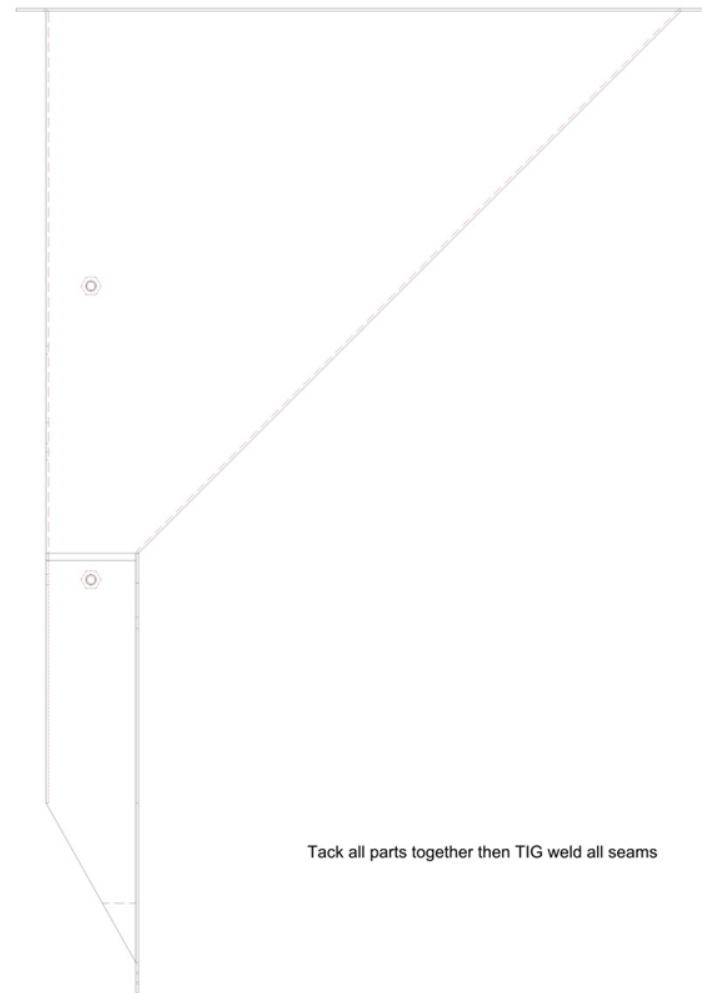
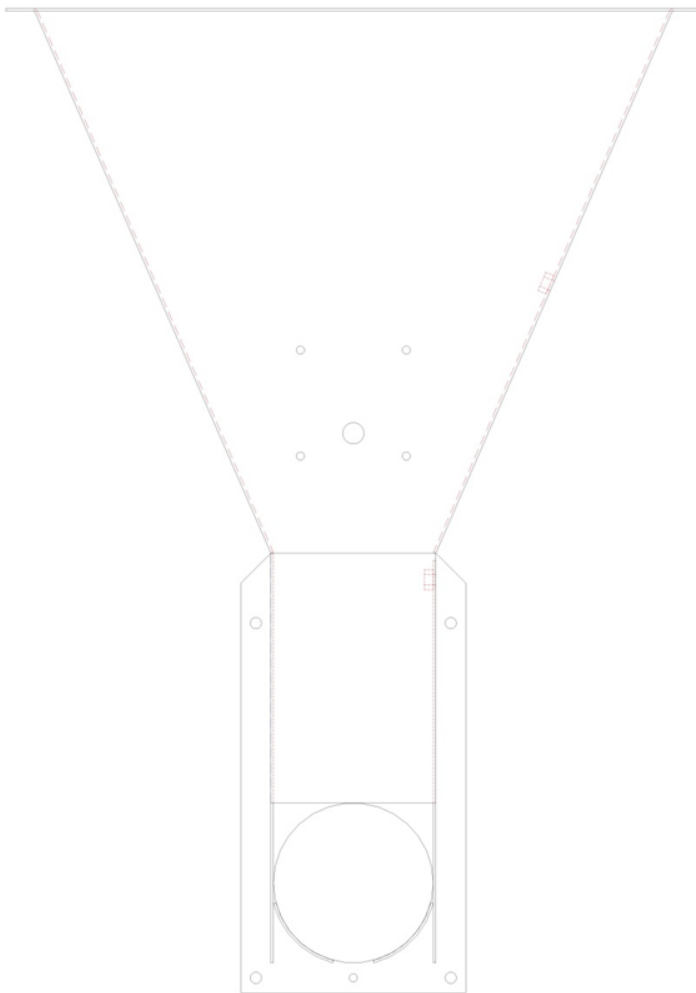
Hopper Back Formed

Project Name:

Spelt Dehuller

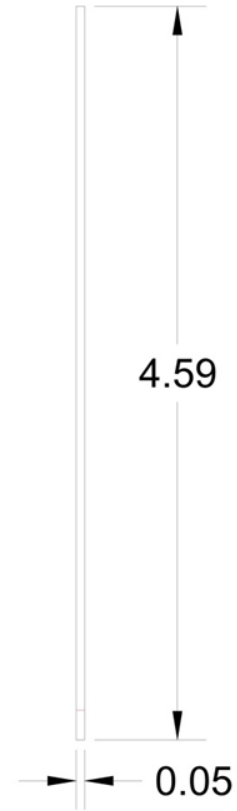


Sym	Revision Record	Date	<b>Tolerances</b> (Except as noted) Decimals: .xxx +/- .005" Fractional: .xx +/- 1/32" Angular +/- 1°	Date:	9/26/12	Part Number:	12029
				Scale:	Full	Title:	Filler Plate
				Drawn By:	NIT	Project Name:	Spelt Dehuller



Tack all parts together then TIG weld all seams

Sym	Revision Record	Date	<b>Tolerances</b> (Except as noted) Decimals: .xxx +/- .005" Fractional: .xx +/- 1/32" Angular +/- 1°	Date:	9/26/12	Part Number:	12030
				Scale:	1/4	Title:	Hopper
				Drawn By:	NIT	Project Name:	Spelt Dehuller



Sym

Revision Record

Date

Tolerances

(Except as noted)

Decimals:

.xxx +/- .005"

Fractional:

.xx +/- 1/32"

Angular +/- 1°

Date:

9/26/12

Scale:

Full

Drawn By:

NIT

Part Number:

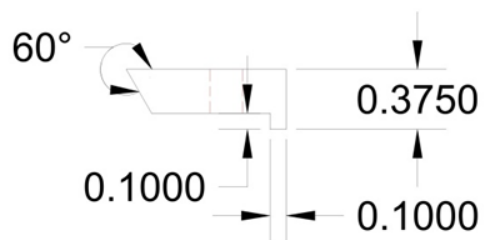
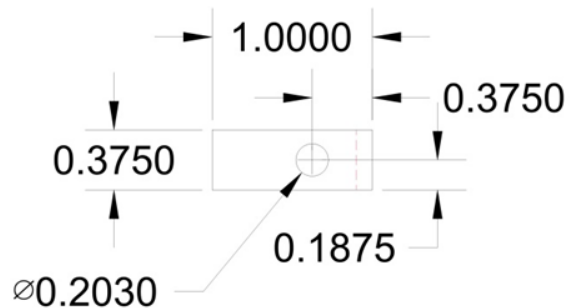
12031

Title:

Magnet Door

Project Name:

Spelt Dehuller



Sym	Revision Record	Date	Tolerances (Except as noted) Decimals: .xxx +/- .005" Fractional: .xx +/- 1/32" Angular +/- 1°

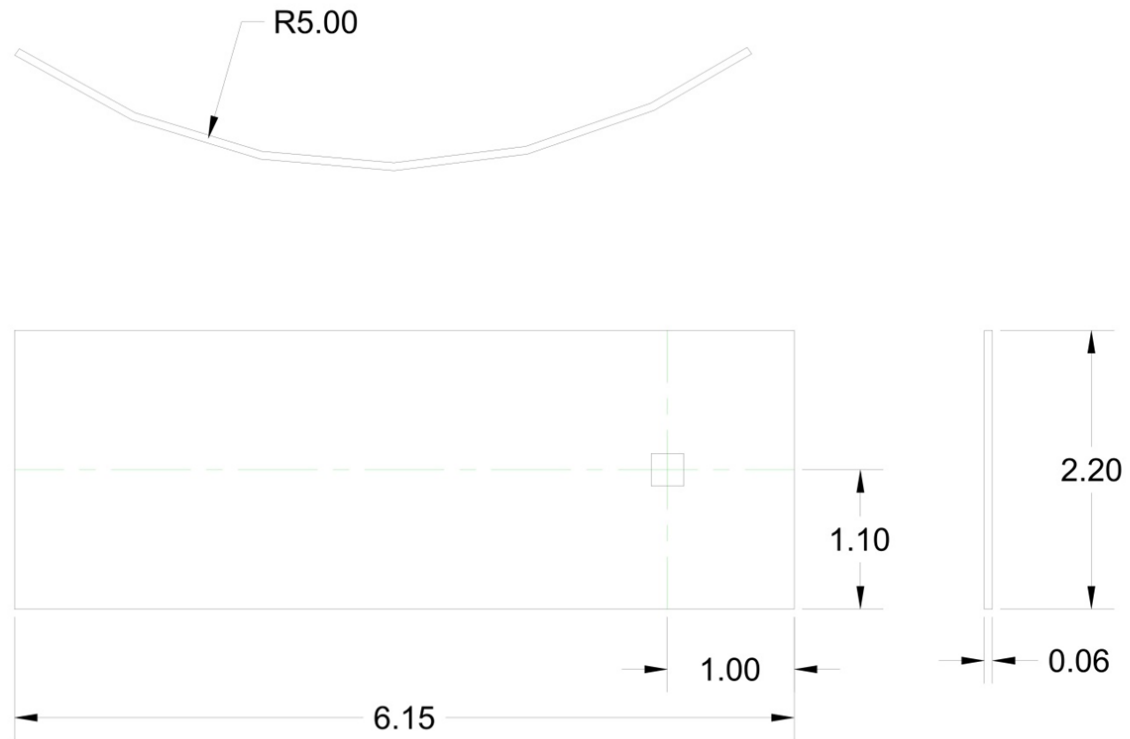
Date:	9/26/12
Scale:	Full
Drawn By:	NIT

Part Number:	12032
Title:	Magnet Door Clamp
Project Name:	Spelt Dehuller

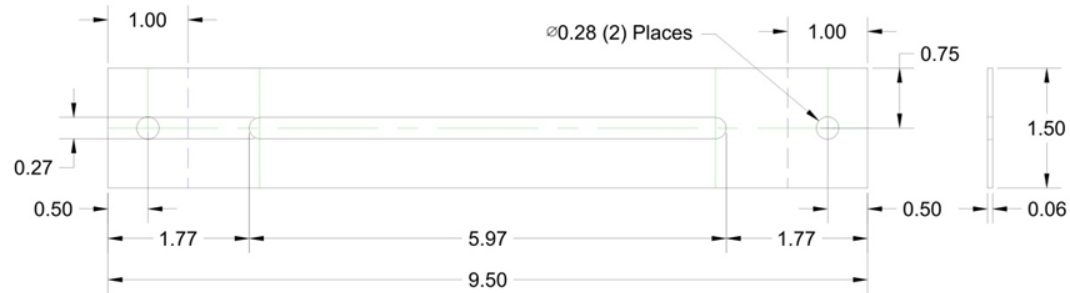
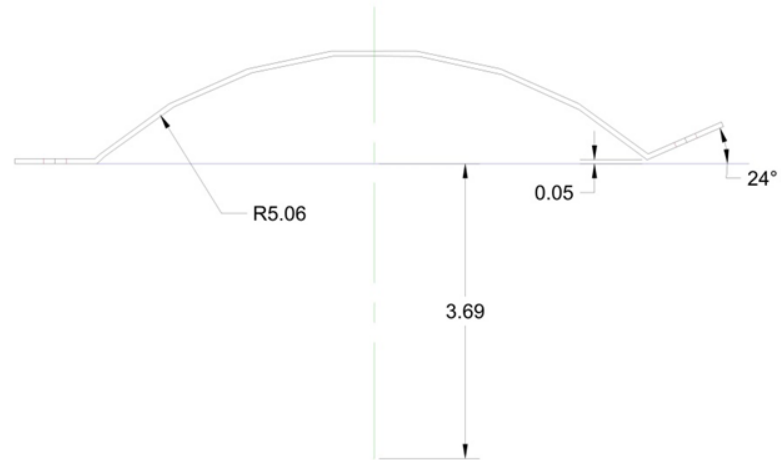
Material: 16 ga. CF Sheet Steel

Number Required: 1

Process Notes: Cut then form



Sym	Revision Record	Date	Tolerances (Except as noted) Decimals: .xxx +/- .005" Fractional: .xx +/- 1/32" Angular +/- 1°	Date:	9/26/12	Part Number:	12033
				Scale:	Full	Title:	Feed Gate
				Drawn By:	NIT	Project Name:	Spelt Dehuller



Sym

Revision Record

Date

Tolerances

(Except as noted)  
 Decimals:  
 .xxx +/- .005"  
 Fractional:  
 .xx +/- 1/32"  
 Angular +/- 1°

Date:

9/26/12

Scale:

1/2

Drawn By:

NIT

Part Number:

12034

Title:

Feed Gate Holder

Project Name:

Spelt Dehuller



Sym

Revision Record

Date

Tolerances

(Except as noted)

Decimals:  
.xxx +/- .005"Fractional:  
.xx +/- 1/32"

Angular +/- 1°

Date:

9/26/12

Scale:

Full

Drawn By:

NIT

Part Number:

12035

Title:

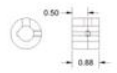
Stirator Spacer

Project Name:

Spelt Dehuller

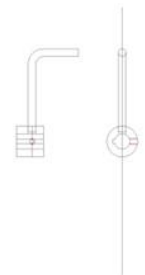


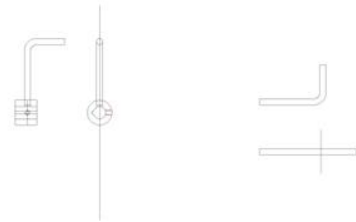
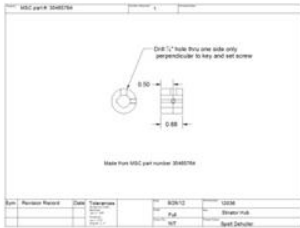
Item	MSC part #	Description	Quantity
	35465704		1

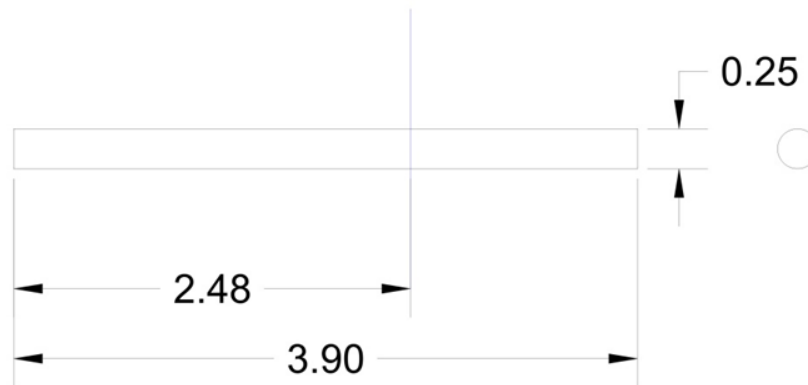
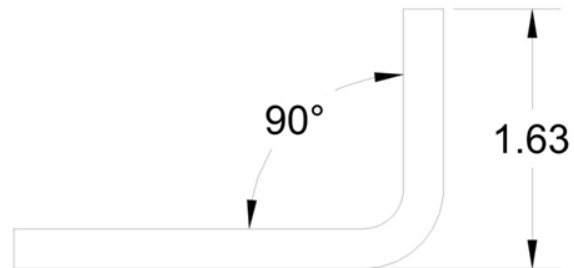
  


Made from MSC part number 35465704

Item	Revision	Reason	Created	Entered	By	Checked
1	1	Released	02/21/12	12:00	SP	SP
					Full	Stratford Hub
					MT	Spelt Detweiler







Sym

Revision Record

Date

Tolerances

(Except as noted)

Decimals:

.xxx +/- .005"

Fractional:

.xx +/- 1/32"

Angular +/- 1°

Date:

9/26/12

Scale:

Full

Drawn By:

NIT

Part Number:

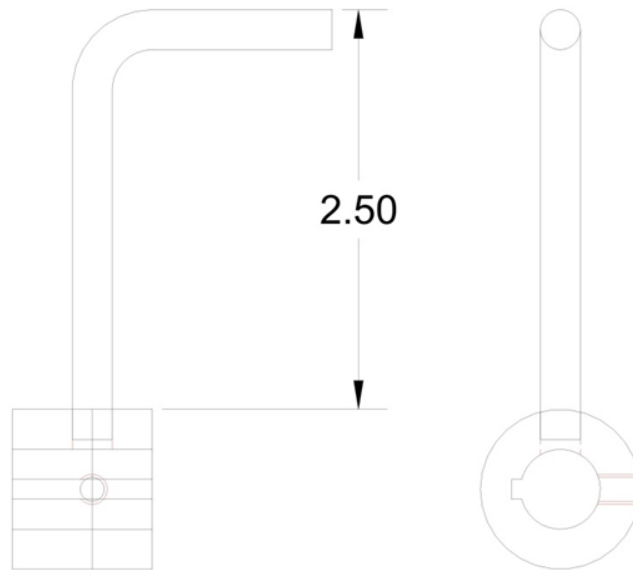
12037

Title:

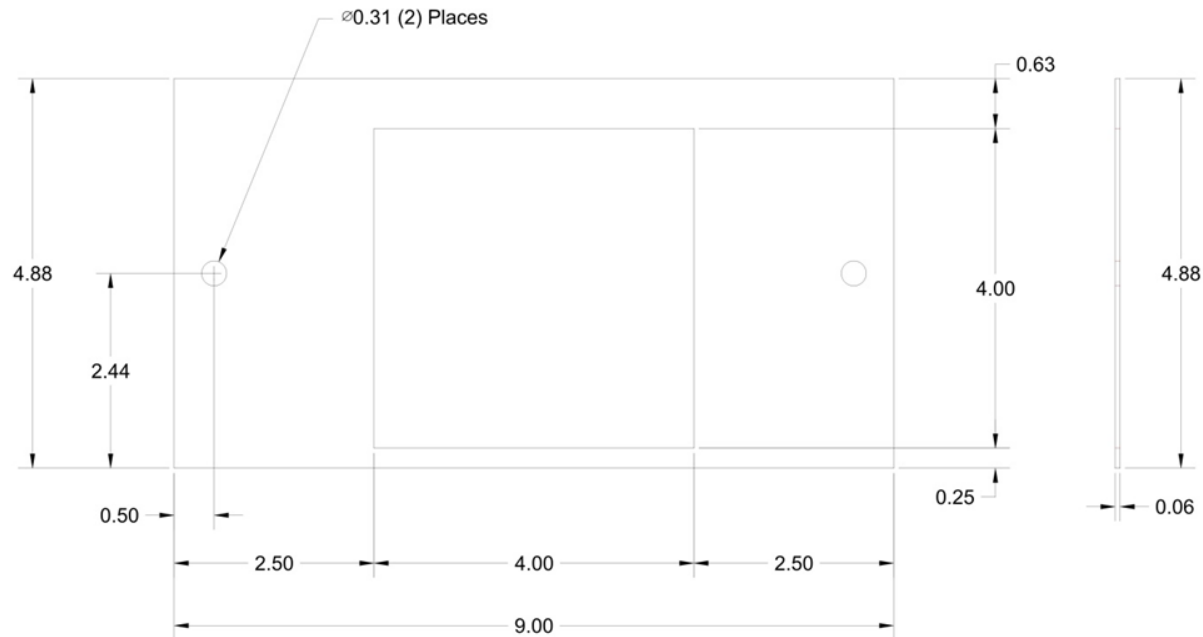
Stirator Rod

Project Name:

Spelt Dehuller



Sym	Revision Record	Date	<b>Tolerances</b> (Except as noted) Decimals: .xxx +/- .005" Fractional: .xx +/- 1/32" Angular +/- 1°	Date:	9/26/12	Part Number:	12038
				Scale:	Full	Title:	Stirator Assembly
				Drawn By:	NIT	Project Name:	Spelt Dehuller



Sym

Revision Record

Date

Tolerances

(Except as noted)

Decimals:

.xxx +/- .005"

Fractional:

.xx +/- 1/32"

Angular +/- 1°

Date:

9/27/12

Scale:

1/2

Drawn By:

NIT

Part Number:

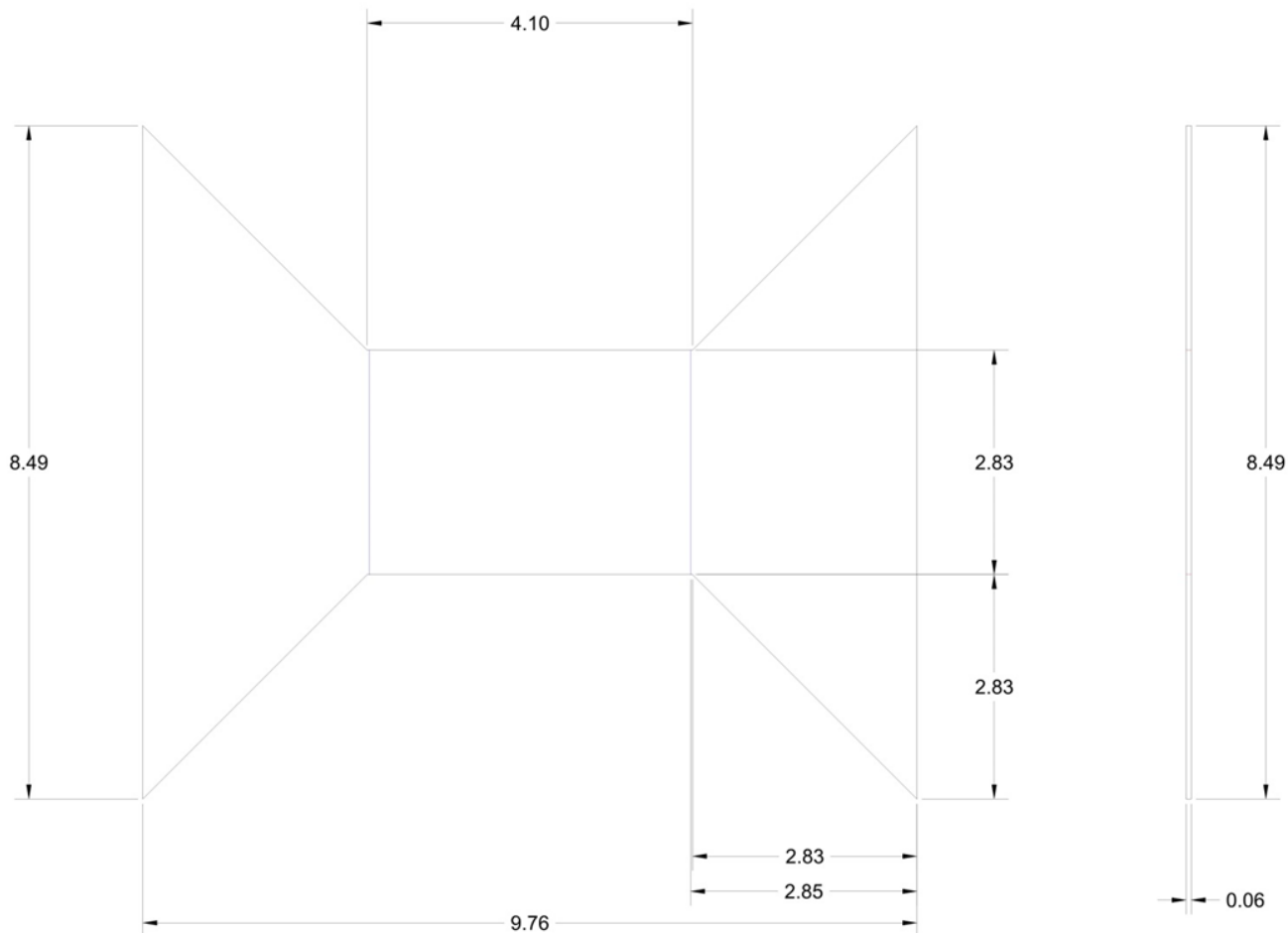
12039

Title:

Aspirator Mount

Project Name:

Spelt Dehuller



Sym

Revision Record

Date

Tolerances

(Except as noted)

Decimals:  
.xxx +/- .005"Fractional:  
.xx +/- 1/32"

Angular +/- 1°

Date:

9/27/12

Scale:

1/2

Drawn By:

NIT

Part Number:

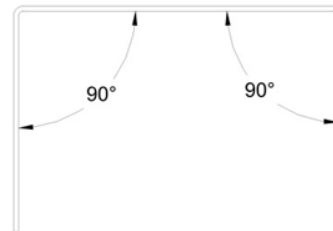
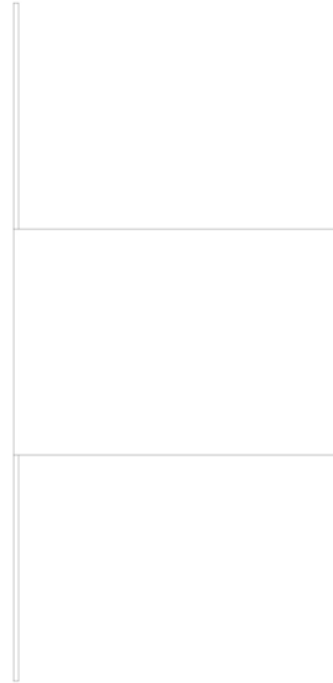
12040

Title:

Aspirator Slide Top

Project Name:

Spelt Dehuller



Sym	Revision Record	Date	<b>Tolerances</b> (Except as noted) Decimals: .xxx +/- .005" Fractional: .xx +/- 1/32" Angular +/- 1°	Date:	9/27/12	Part Number:	12040B
				Scale:	1/2	Title:	Aspirator Slide Top Formed
				Drawn By:	NIT	Project Name:	Spelt Dehuller

Material:

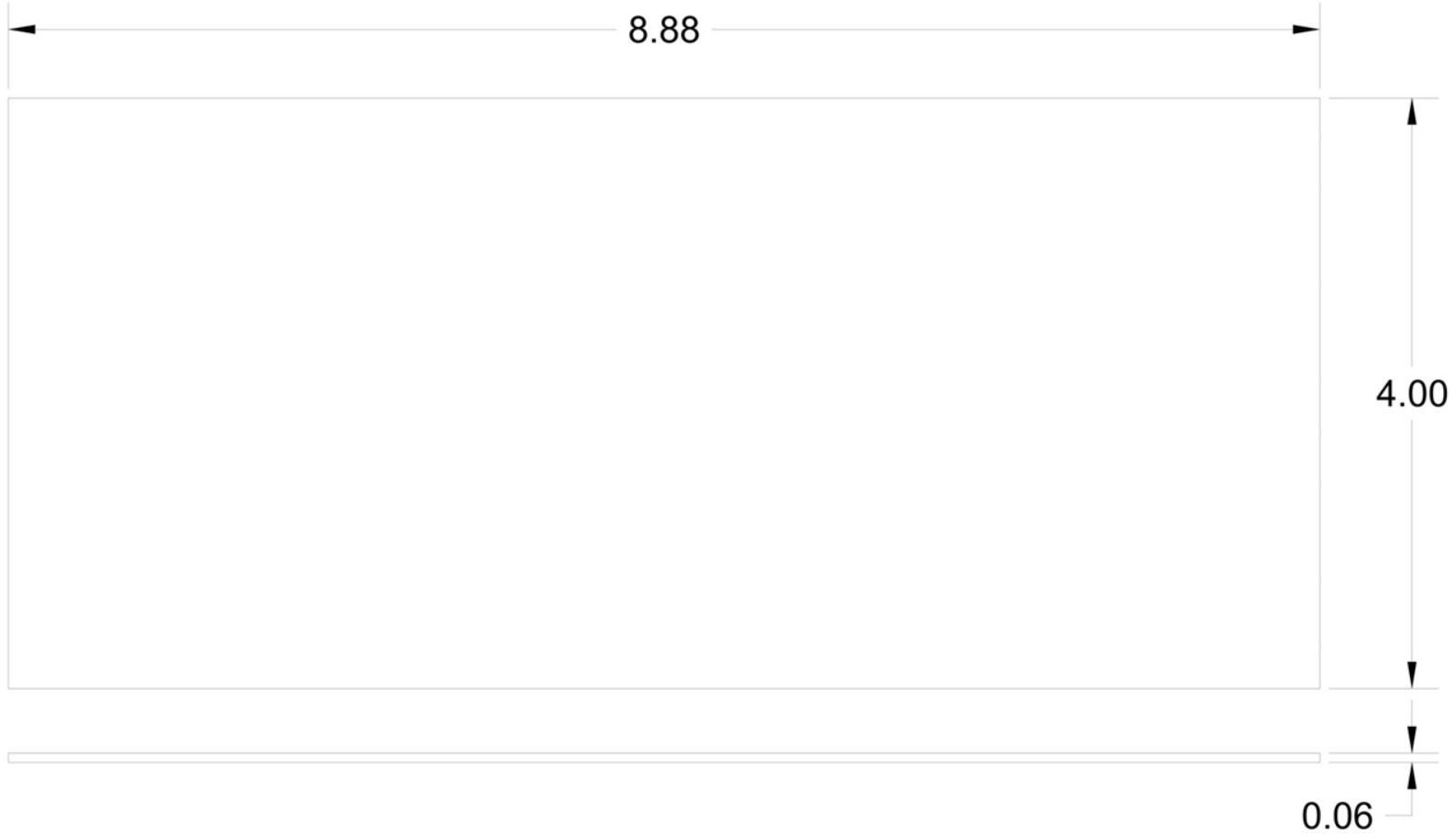
16 ga. CF Sheet Steel

Number Required:

1

Process Notes:

Laser Cut



Sym

Revision Record

Date

Tolerances

(Except as noted)

Decimals:  
.xxx +/- .005"

Fractional:  
.xx +/- 1/32"

Angular +/- 1°

Date:

9/27/12

Part Number:

12041

Scale:

Full

Title:

Aspirator Slide Bottom

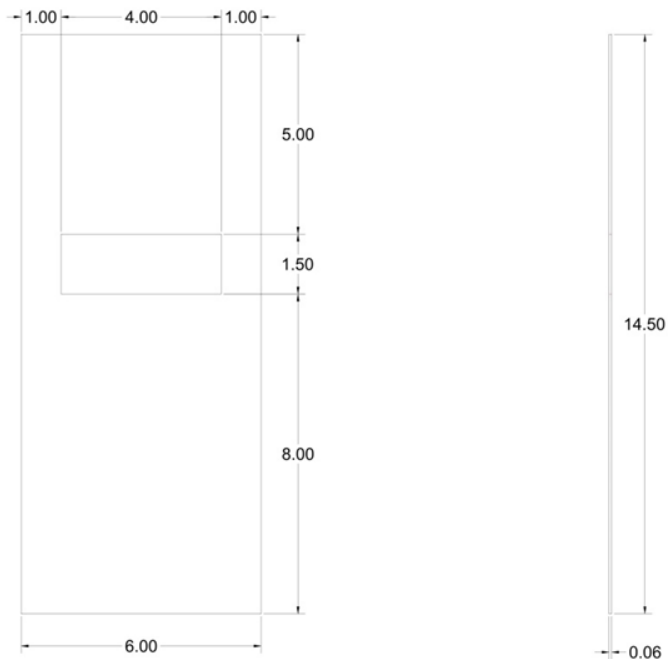
Drawn By:

NIT

Project Name:

Spelt Dehuller





Sym

Revision Record

Date

Tolerances

(Except as noted)

Decimals:

.xxx +/- .005"

Fractional:

.xx +/- 1/32"

Angular +/- 1°

Date:

9/27/12

Scale:

1/4

Drawn By:

NIT

Part Number:

12042

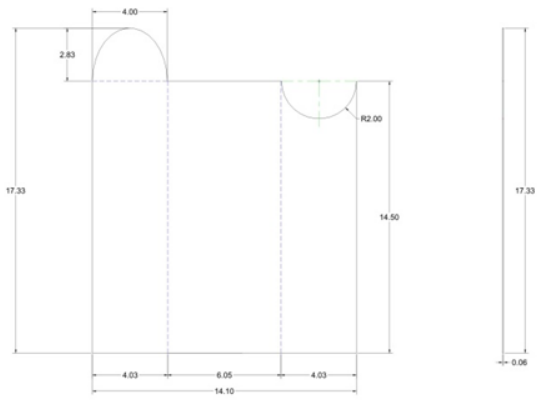
Title:

Aspirator Back

Project Name:

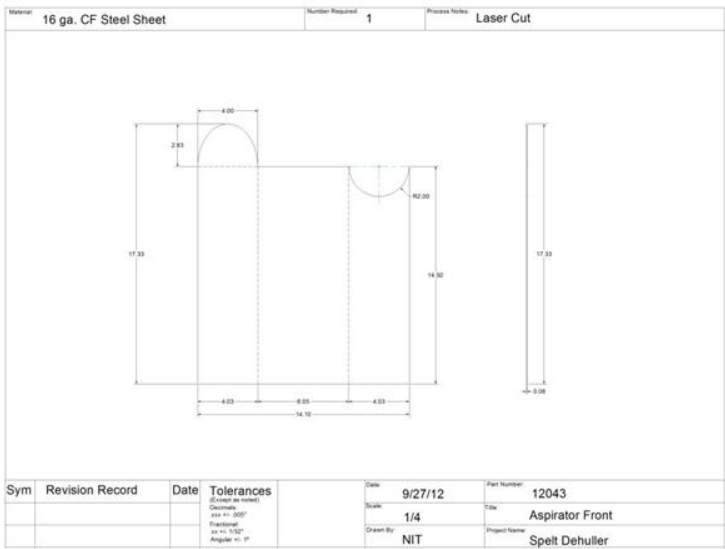
Spelt Dehuller

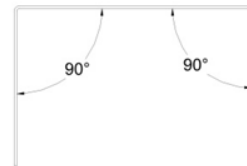
Material: 16 ga. CF Steel Sheet      Number Required: 1      Process Notes: Laser Cut



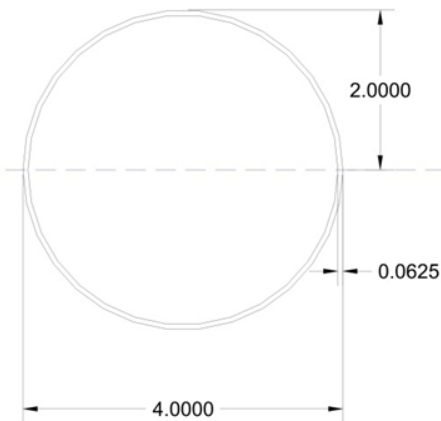
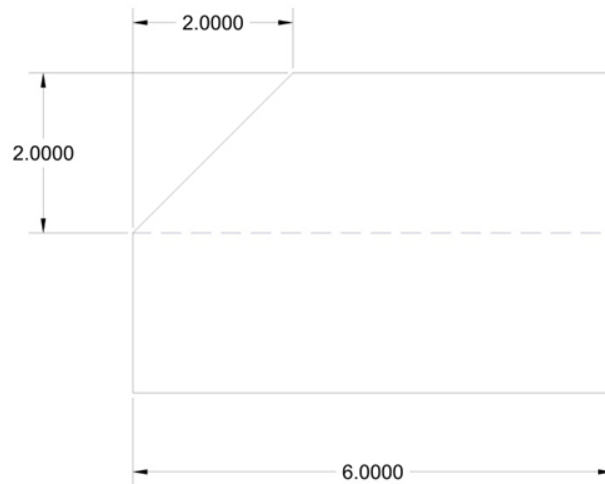
Sym	Revision Record	Date	Tolerances (Except as noted) Decimal: xxx +/- .005" Fractional: xx +/- 1/32" Angular +/- 1°	Date: 9/27/12	Part Number: 12043
				Scale: 1/4	Title: Aspirator Front
				Drawn By: NIT	Project Name: Spelt Dehuller







Sym	Revision Record	Date	<b>Tolerances</b> (Except as noted) Decimals: .xxx +/- .005" Fractional: .xx +/- 1/32" Angular +/- 1°	Date:	9/27/12	Part Number:	12043 B
				Scale:	1/4	Title:	Aspirator Front Formed
				Drawn By:	NIT	Project Name:	Spelt Dehuller



Cut tube below line

Sym

Revision Record

Date

Tolerances

(Except as noted)

Decimals:  
.xxx +/- .005"Fractional:  
.xx +/- 1/32"

Angular +/- 1°

Date:

9/30/12

Scale:

1/2

Drawn By:

NIT

Part Number:

12044

Title:

Aspirator Top

Project Name:

Spelt Dehuller

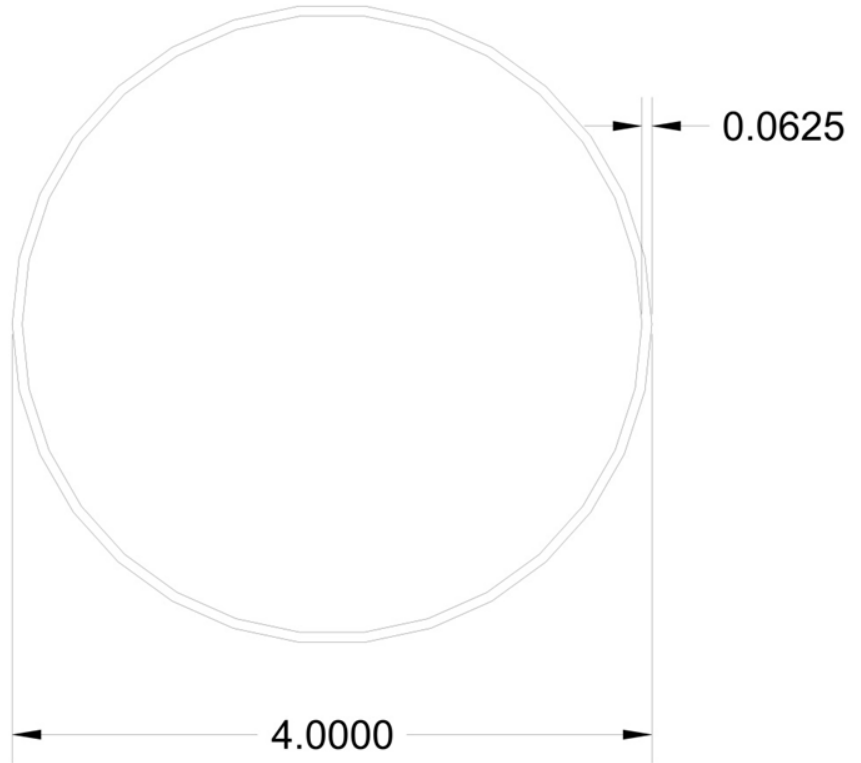
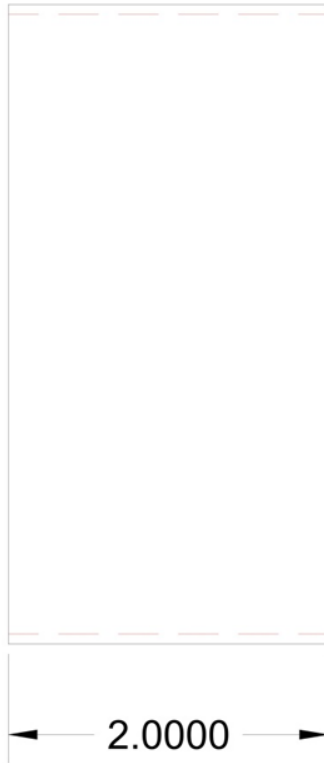
Material:

4" exhaust tube 16 ga. wall

Number Required:

1

Process Notes:



Sym

Revision Record

Date

Tolerances

(Except as noted)

Decimals:  
.xxx +/- .005"

Fractional:  
.xx +/- 1/32"

Angular +/- 1°

Date:

9/30/12

Part Number:

12045

Scale:

Full

Title:

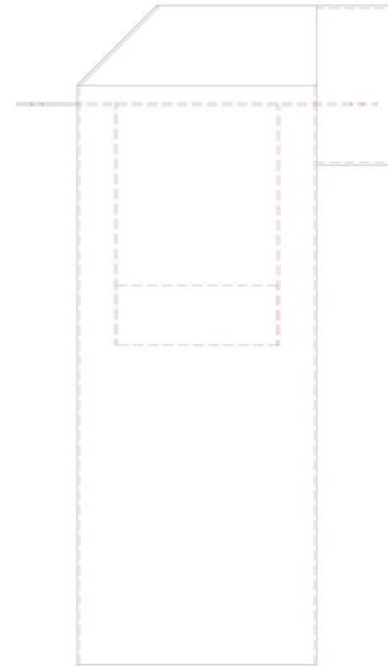
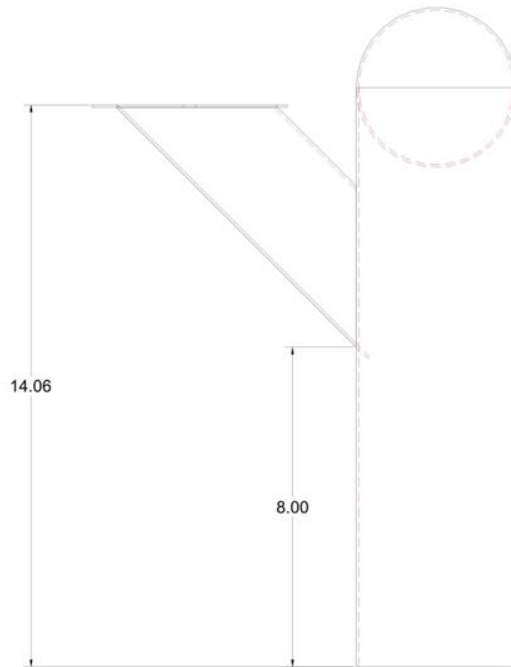
Aspirator Suction Port

Drawn By:

NIT

Project Name:

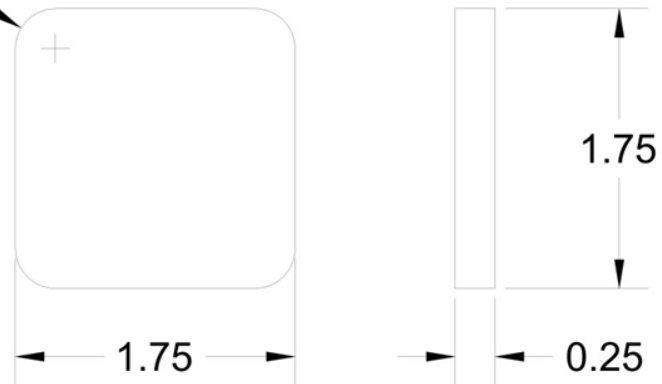
Spelt Dehuller



Tack all parts together then TIG weld all seams

Sym	Revision Record	Date	Tolerances (Except as noted) Decimals: .xxx +/- .005" Fractional: .xx +/- 1/32" Angular +/- 1°	Date: 9/30/12	Part Number: 12046
				Scale: 1/4	Title: Aspirator Assembly
				Drawn By: NIT	Project Name: Spelt Dehuller

R0.25 (4) Places



Sym	Revision Record	Date	<b>Tolerances</b> (Except as noted) Decimals: .xxx +/- .005" Fractional: .xx +/- 1/32" Angular +/- 1°	Date:	10/2/12	Part Number:	12047
				Scale:	Full	Title:	End Cap
				Drawn By:	NIT	Project Name:	Spelt Dehuller



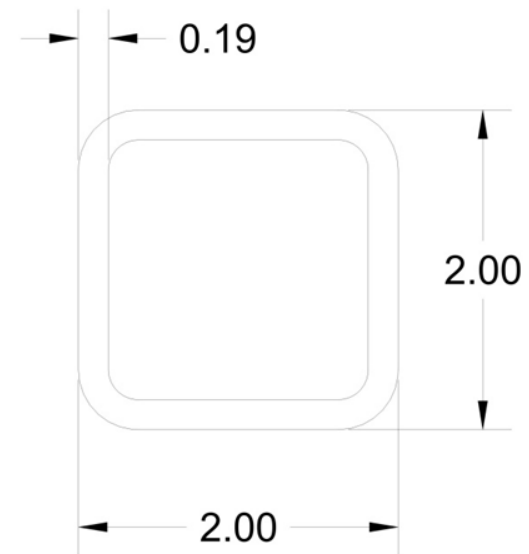
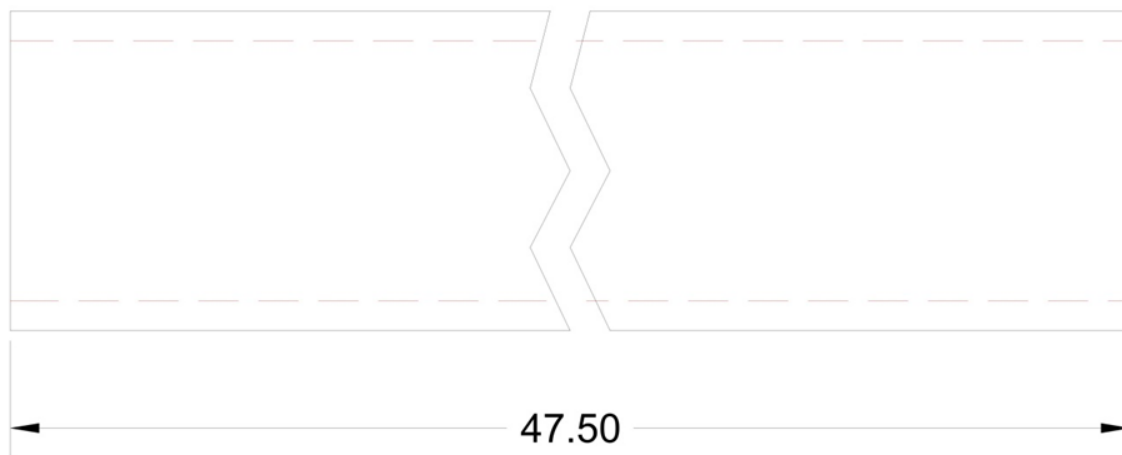
Material:

2 x 2 SQ. Tube .1875 Wall

Number Required:

2

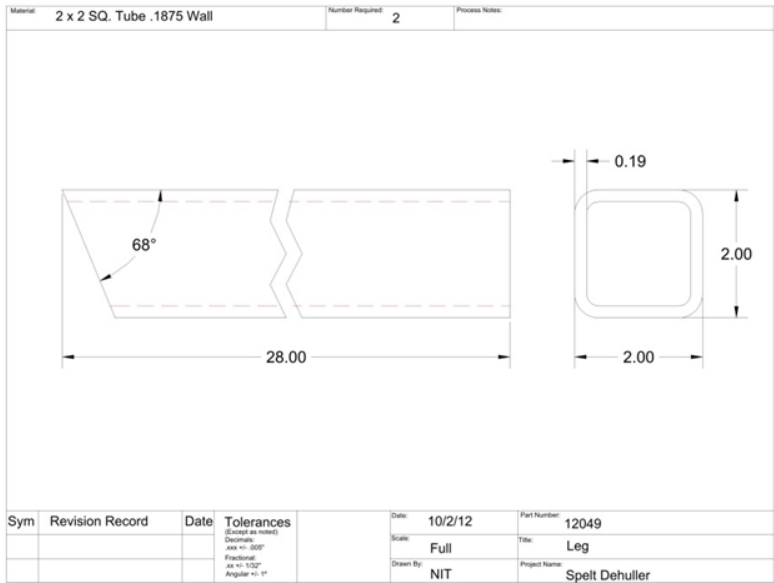
Process Notes:

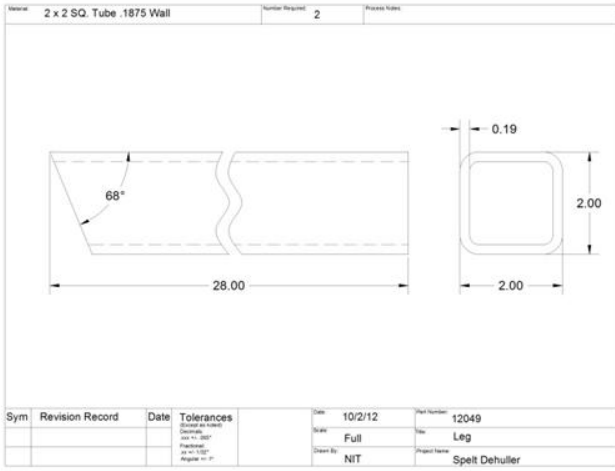


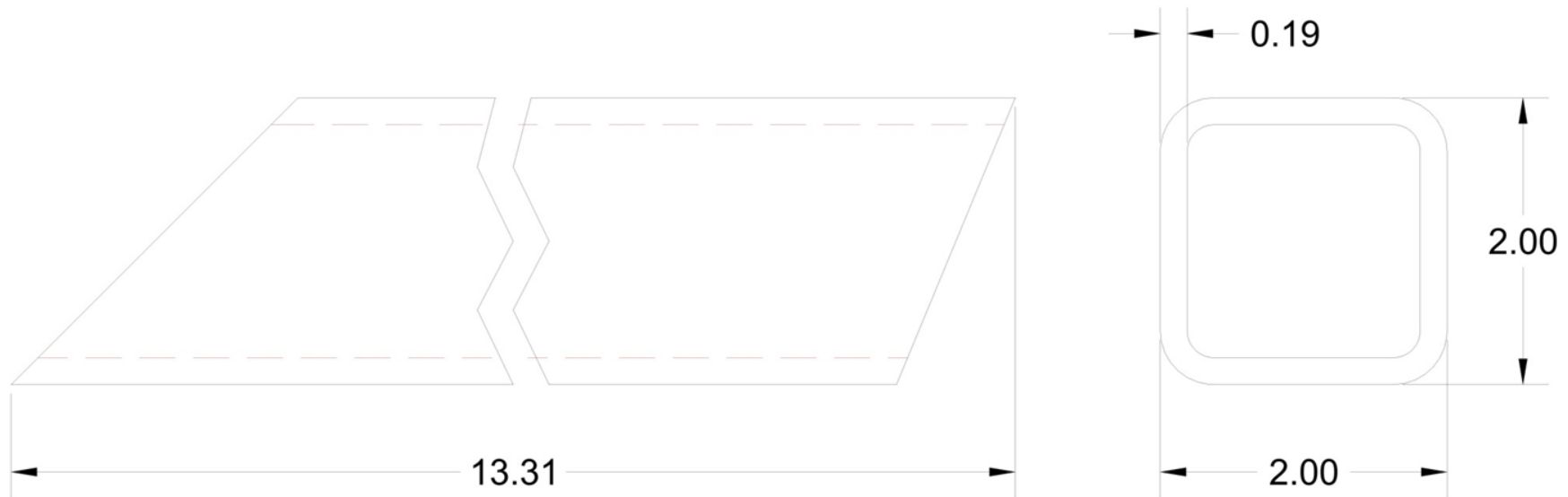
Sym	Revision Record	Date	Tolerances (Except as noted) Decimals: .xxx +/- .005" Fractional: .xx +/- 1/32" Angular +/- 1°

Date:	10/2/12
Scale:	Full
Drawn By:	NIT

Part Number:	12048
Title:	Base
Project Name:	Spelt Dehuller







Sym

Revision Record

Date

Tolerances

(Except as noted)  
 Decimals:  
 .xxx +/- .005"  
 Fractional:  
 .xx +/- 1/32"  
 Angular +/- 1°

Date:

10/3/12

Part Number:

12050

Scale:

Full

Title:

Leg Angle

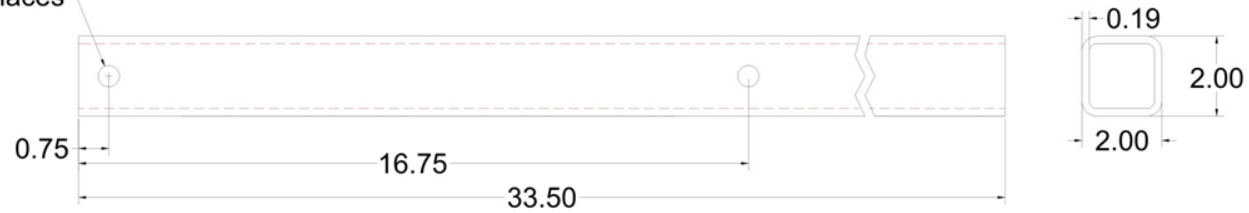
Drawn By:

NIT

Project Name:

Spelt Dehuller

∅0.53 (2) Places



Sym

Revision Record

Date

Tolerances

(Except as noted)

Decimals:  
.xxx +/- .005"Fractional:  
.xx +/- 1/32"

Angular +/- 1°

Date:

10/3/12

Part Number:

12051

Scale:

1/4

Title:

Stand Main Tube

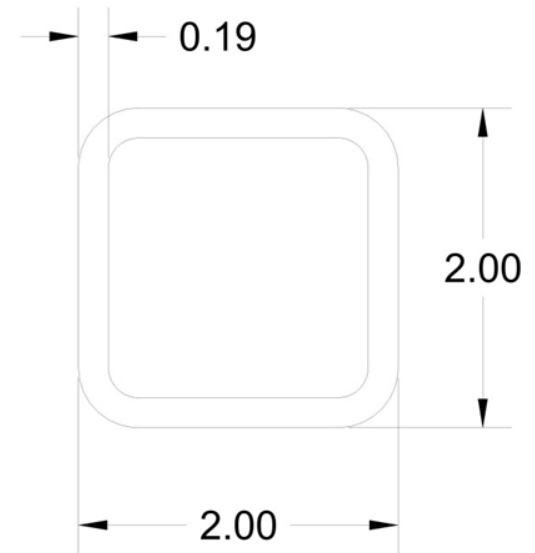
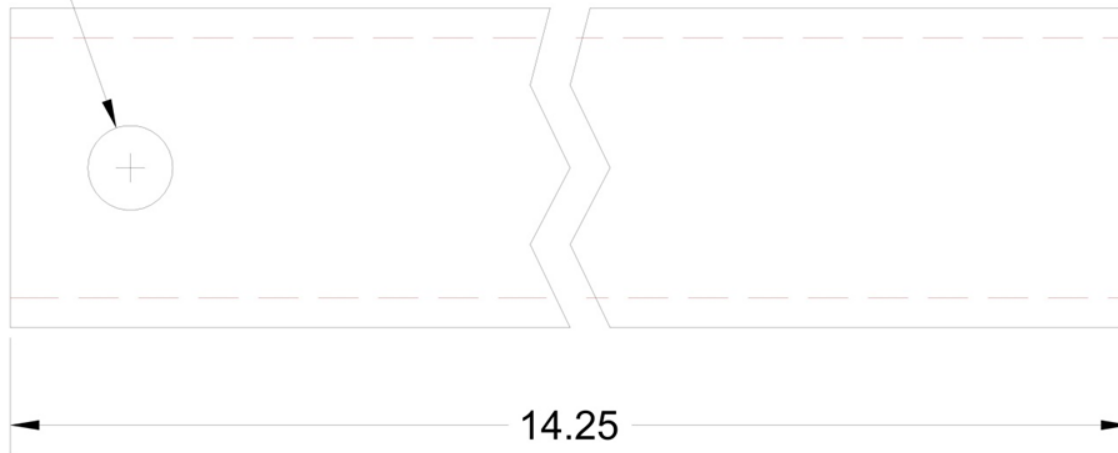
Drawn By:

NIT

Project Name:

Spelt Dehuller

∅0.53



Sym	Revision Record	Date	Tolerances (Except as noted) Decimals: .xxx +/- .005" Fractional: .xx +/- 1/32" Angular +/- 1°

Date: 10/3/12

Part Number: 12052

Scale: Full

Title: Stand Vertical Tube

Drawn By: NIT

Project Name: Spelt Dehuller

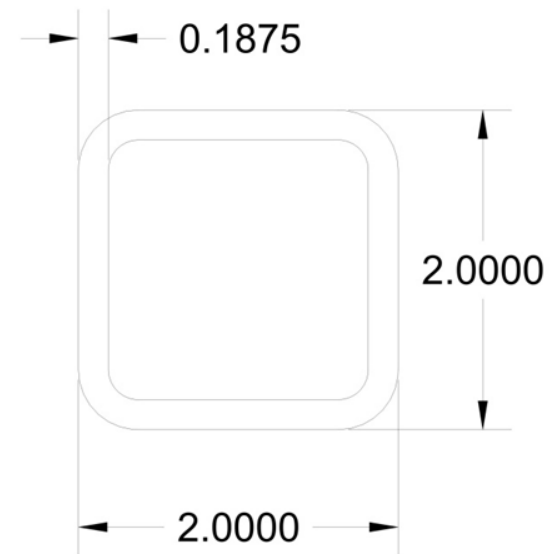
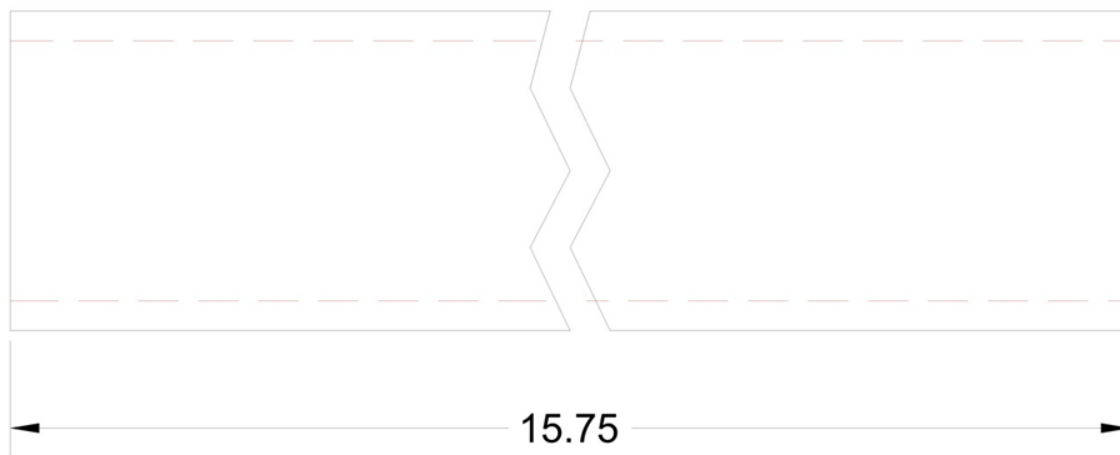
Material:

2 x 2 SQ. Tube .1875 Wall

Number Required:

1

Process Notes:

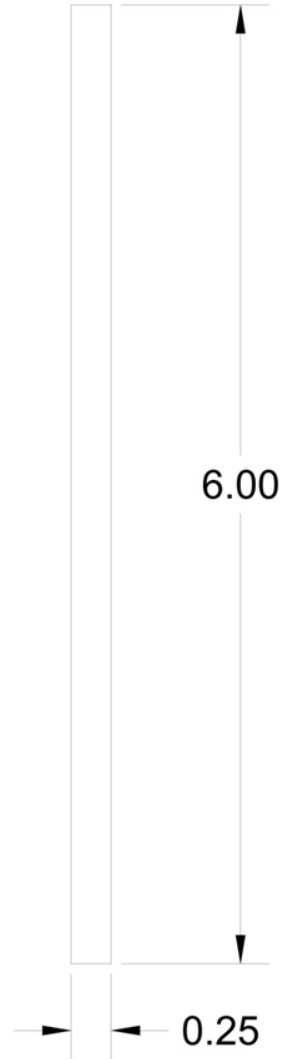


Sym	Revision Record	Date	<b>Tolerances</b> (Except as noted) Decimals: .xxx +/- .005" Fractional: .xx +/- 1/32" Angular +/- 1°	Date:	10/3/12	Part Number:	12053
				Scale:	Full	Title:	Stand Panel Mount Tube
				Drawn By:	NIT	Project Name:	Spelt Dehuller

Material: 1/4 HR A36 Plate

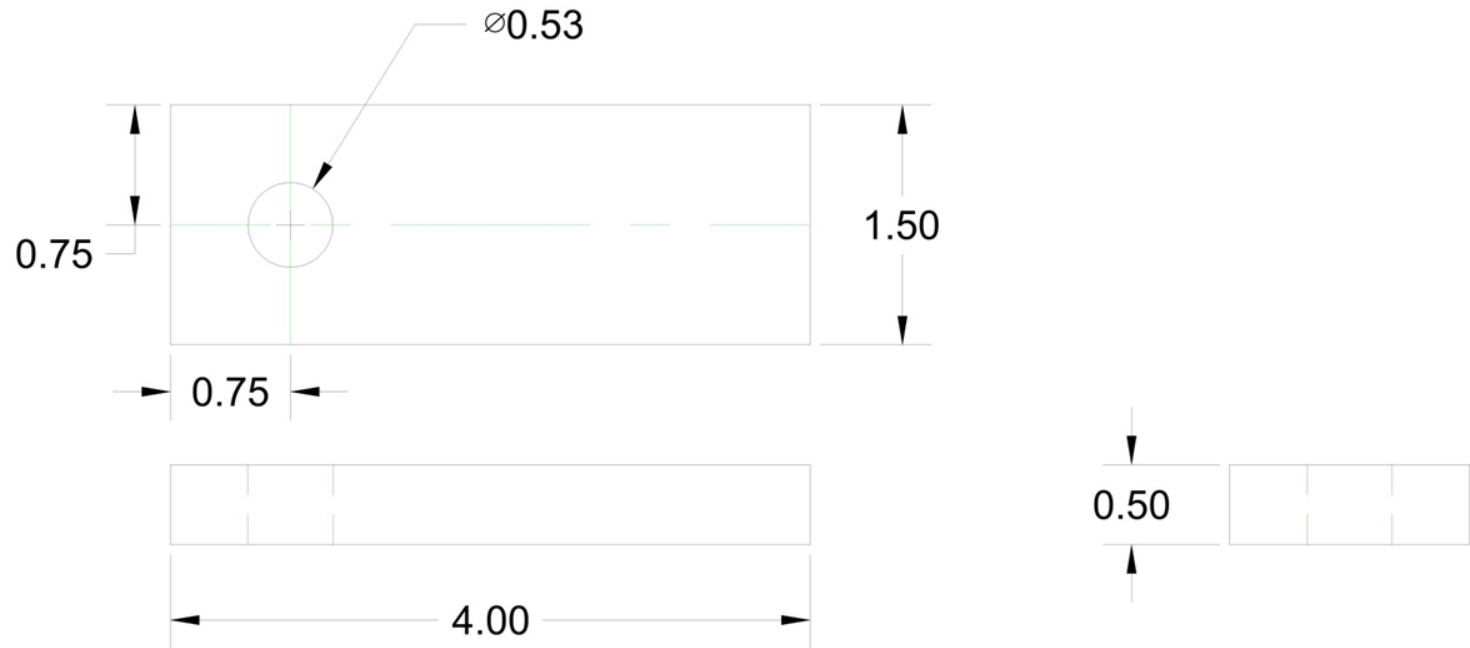
Number Required: 2

Process Notes: Plasma Cut



Sym	Revision Record	Date	<b>Tolerances</b> (Except as noted) Decimals: .xxx +/- .005" Fractional: .xx +/- 1/32" Angular +/- 1°	Date:	10/3/12	Part Number:	12054
				Scale:	Full	Title:	Stand Brace
				Drawn By:	NIT	Project Name:	Spelt Dehuller





Sym

Revision Record

Date

Tolerances

(Except as noted)

Decimals:

.xxx +/- .005"

Fractional:

.xx +/- 1/32"

Angular +/- 1°

Date:

10/3/12

Scale:

Full

Drawn By:

NIT

Part Number:

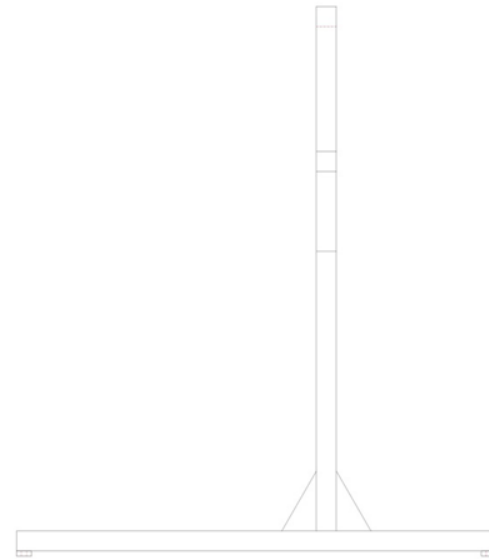
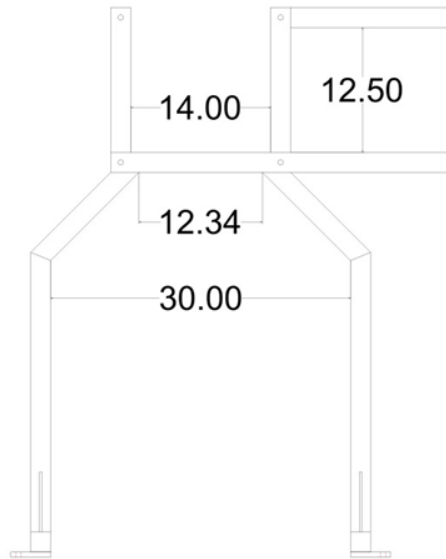
12055

Title:

Foot

Project Name:

Spelt Dehuller



MIG weld all joints with 1/4" weld

Sym	Revision Record	Date	Tolerances (Except as noted) Decimals: .xxx +/- .005" Fractional: .xx +/- 1/32" Angular +/- 1°	Date: 10/3/12	Part Number: 12056
				Scale: 1/16	Title: Stand Assembly
				Drawn By: NIT	Project Name: Spelt Dehuller



Sym

Revision Record

Date

Tolerances

(Except as noted)

Decimals:  
.xxx +/- .005"Fractional:  
.xx +/- 1/32"

Angular +/- 1°

Date:

2/19/13

Scale:

1/2

Drawn By:

NIT

Part Number:

12057

Title:

Rotor Wrench

Project Name:

Spelt Dehuller