

# 2016 Bean & Grain Scouting Report

*‘Fungi, Bacteria, and Insects, Oh My!’*



*By Dr. Heather Darby, UVM Extension Agronomist, Erica Cummings UVM Extension Northwest Crops and Soils Coordinator, Dr. Ann Hazelrigg, Director, Plant Diagnostic Clinic Gabriella Maia, Plant Diagnostic Clinic Research Assistant*



COMMUNITY



4-H & YOUTH



ENVIRONMENT



AGRICULTURE



FOOD



UNIVERSITY OF  
VERMONT

**EXTENSION**

# ON-FARM SCOUTING of DRY BEANS

## 5 – Locations:

- Alburgh, VT - 18 varieties
- Glover, VT- 16 varieties
- Cambridge, VT - 1 variety
- N. Ferrisburg, VT - 2 varieties
- Danby, VT – 7 varieties



**\*Overall warm and dry growing conditions throughout much of the season = low levels of foliar and root diseases**

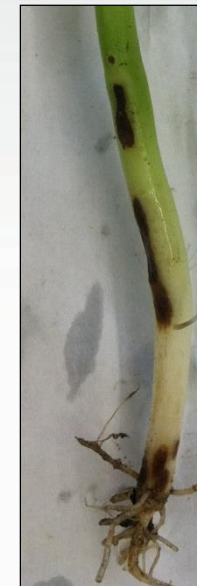
# ON-FARM SCOUTING of DRY BEANS

## *Plant Diseases Identified:*

Location	Root rots	Anthracnose	Ascochyta	Common bacterial blight	Bacterial brown spot	Alternaria leaf spot	Mosaic virus
Alburgh, VT	X	X		X	X	X	X
Cambridge, VT		X					
Danby, VT				X			
Glover, VT	X	X	X	X		X	
N. Ferrisburg, VT		X			X		

### **ROOT ROTS:**

- *Rhizoctonia* spp.
- *Fusarium* spp.
- *Pythium* spp.



# ON-FARM SCOUTING of DRY BEANS

## Anthracnose (*Colletotrichum lindemuthianum*):

*\*One exception*

- Seed borne
- Purchased contaminated seed
- Multiple farms = **60-100% loss**
  - Glover, VT
  - Cambridge, VT

**\*Buy certified seed**



Typical symptoms of bean Anthracnose collected at the Cambridge field (A). Leaf underside with dark lesions along veins (B). Circular pod lesions with gray-black centers (C) and distinctive interior of the lesion exuding tan to pink/salmon masses of spores (D).

# ON-FARM SCOUTING of DRY BEANS

## NEWLY IDENTIFIED!

### Ascochyta pod blight:



**Signs of Ascochyta pod blight. Cultivars ‘Tiger’s Eye’ (right) and ‘Black Turtle’ (left). Sunken lesions with dark center visible. Detail of concentric rings of small pycnidia (dots) developing in the center of lesions were the main diagnostic characteristic (right).**

# ON-FARM SCOUTING of DRY BEANS

## Alternaria leaf spot (*Aternaria alternata*):

- Glover, VT
- Alburgh, VT

**\*Will overwinter on crops and weed debris – ROTATE!**



## Common bacterial blight (*Xanthomonas axonopodis* pv. phaseoli)

- Alburgh, VT
- Glover, VT
- Danby, VT

**\*Often 2<sup>nd</sup> infection, coincides with potato leafhopper damage.**

# ON-FARM SCOUTING of DRY BEANS

## *Insect Pests:*



Location	Potato Leaf-hopper	Thrips
Alburgh, VT	X	X
Cambridge, VT	X	
Danby, VT	X	
Glover, VT	X	X
N. Ferrisburg, VT		

# ON-FARM SCOUTING of DRY BEANS

## Potato leafhopper:



Variety	Alburgh, VT	Glover, VT
	Potato leafhopper damage	Potato leafhopper damage
	%	%
Black Calypso	78.8	8.75
Hutterite Soup	100	4.25
Jacob's Cattle	72.5	-
Jacob's Cattle Gold	76.3	9.25
Kenealy Yellow Eye	100	15.0
King of the Early	67.5	-
Lowe's Champion	<b>7.50*</b>	<b>3.00*</b>
Lina Sisco	58.8	6.75
Light Red Kidney	58.8	-
Marifax	56.3	10.0
Orca	41.3	-
Peregion	10.0*	12.5
Raquel	71.3	3.75
Spanish Tolasna	57.5	6.25
Tiger's Eye	61.3	11.3
Tongues of Fire	97.5	-
Vermont Appaloosa	62.5	10.0
Vermont Cranberry	48.8	-
<i>LSD (0.10)</i>	22.4	NS
<i>Trial Mean</i>	62.6	8.40

Values shown in **bold** are of the highest value or top performing.

\* Dry beans that did not perform significantly lower than the top performing variety in a particular column are indicated with an asterisk.

NS-Treatments were not significantly different from one another.

'-' indicates varieties not grown at the Glover, VT trial site

**'Hopperburn'**



# ON-FARM SCOUTING of GRAINS

## 8-Locations:      Grains Scouted:

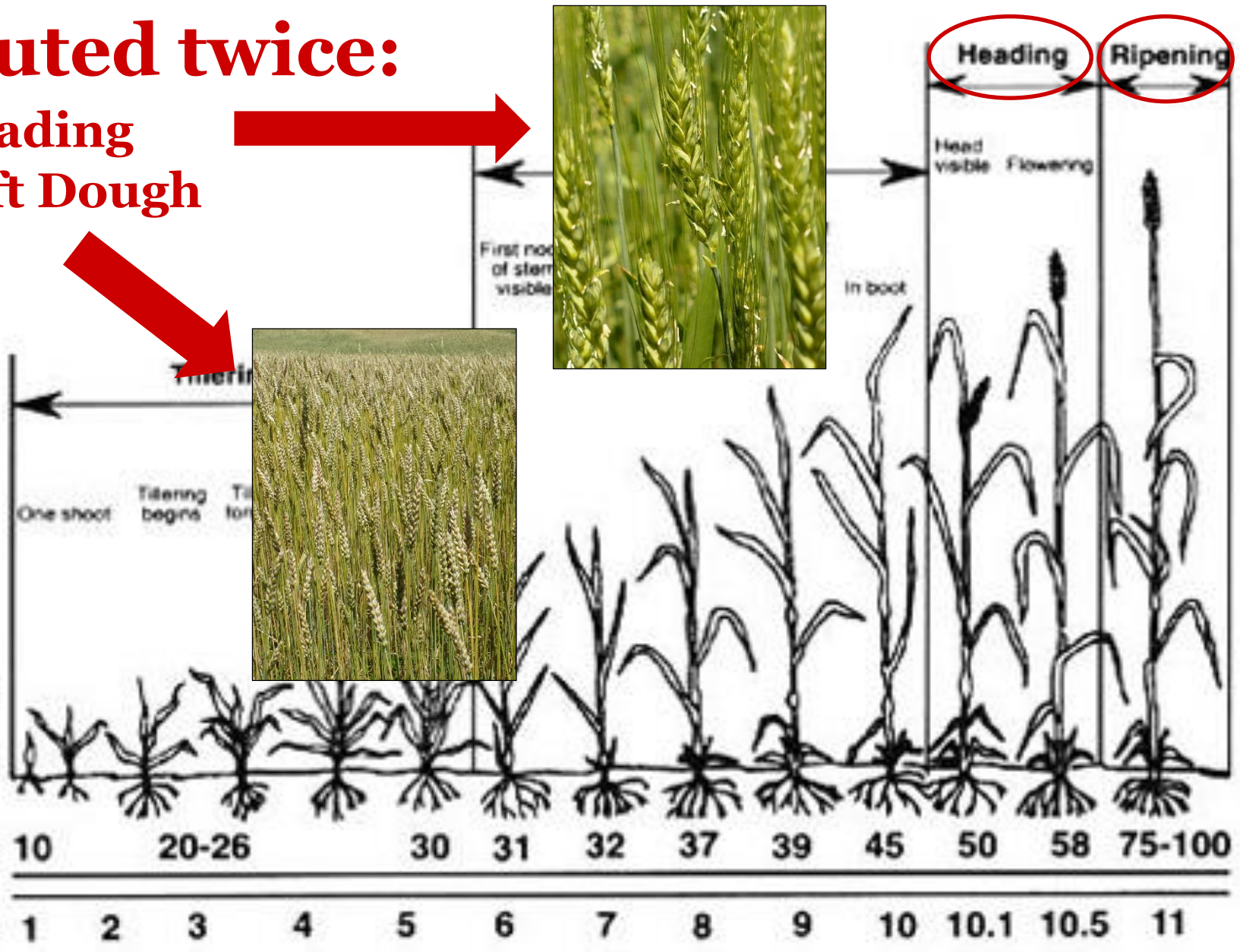
Glover, VT  
North Troy, VT  
Berlin, VT  
Shelburne, VT  
Bridport, VT  
Northfield, MA  
Essex, NY  
Alburgh, VT

- HRSW
- HRSW
- HRWW
- HRWW & SWWW
- HRWW & SWWW
- HRWW, SWWW, & HRSW
- SPRING BARLEY
- Hard & Soft, Winter & Spring Wheat, & Spring Barley

# ON-FARM SCOUTING of GRAINS

**\*Scouted twice:**

- Heading
- Soft Dough



# ON-FARM SCOUTING of GRAINS

**\*Warm and dry weather = low disease pressure\***

## ***Foliar Diseases:***

- Reduces photosynthetic leaf area
- Uses nutrients
- Increases respiration and transpiration within the infected plant tissues.

## ***Plant Response:***

- Reduced vigor, growth and seed fill.

## ***Foliar Diseases Identified:***

**Powdery mildew** (*Erysiphe graminis f. sp. Tritici*) -Likes high humidity

- Northfield, MA – SWWW
- Shelburne, VT – SWWW
- Alburgh, VT – Spring & winter wheat, & spring barley



# ON-FARM SCOUTING of GRAINS



Tan spot infected leaves  
(*Pyrenophora tritici-repentis*)

## LEAF SPOTS:

- Tan spot (*Pyrenophora tritici-repentis*),
- Septoria tritici blotch (STB) (*Zymoseptoria tritici*)
- Stagonospora leaf and glume blotch (*Stagonospora nodorum*)

## \*FOUND:

- All Locations
- All Grain Types



Left leaf infected with Septoria tritici blotch (STB) (*Zymoseptoria tritici*) and the right with Stagonospora leaf blotch (*Stagonospora nodorum*)

# ON-FARM SCOUTING of GRAINS



## Leaf rust (*Puccinia recondite*)

- Alburgh, VT – Wheat and Barley
- Northfield, MA – HRWW & SWWW

## Stripe rust (*Puccinia striiformis*)

- Northfield, MA - HRWW



What's this???



# ON-FARM SCOUTING of GRAINS

## *Grain Head Diseases: Reduce grain yield and quality*



### **Loose Smut (*Ustilago tritici*)**

- Alburgh, VT – Spring & winter wheat, & spring barley
- Bridport, VT – SWWW
- Shelburne, VT - SWWW



### **Fusarium Head Blight (*Fusarium graminearum*)**

- Minimal observations



# 2016 Deoxynivalenol (DON) Levels:



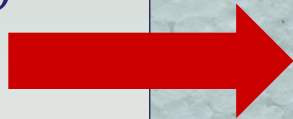
## 2016 Commercial Samples

- 594 samples analyzed
- 450 DON analysis
- DON level range: 0.0 - 6.1ppm
- 59 greater than 1ppm
- SC, NC and PA = highest levels
- Grains with highest DON levels; spring barley and spring wheat.
- No Oats tested over 1ppm

# ON-FARM SCOUTING of GRAINS

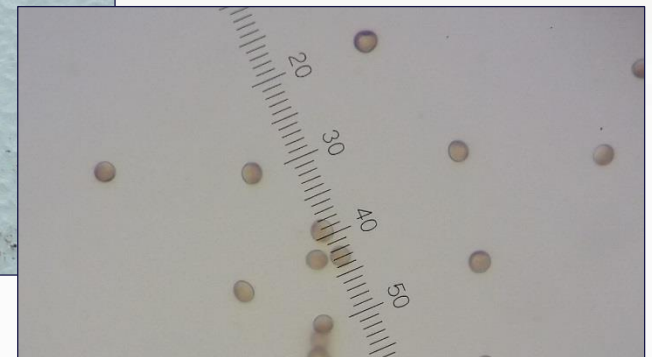
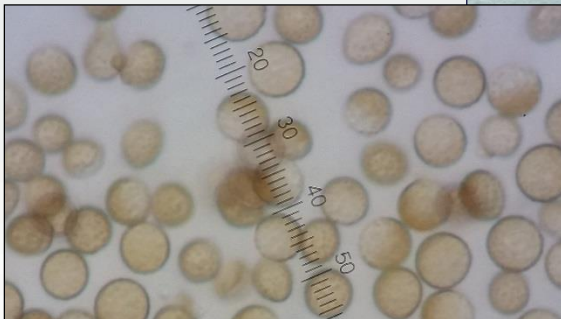
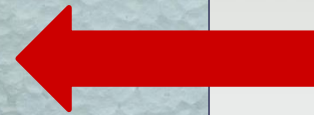
## *New! Grain Head Disease:*

Loose Smut  
(*Ustilago tritici*)



Covered Smut:

- Wheat (*Tilletia caries*)
- Barley and Oats (*Ustilago hordei*)





# ON-FARM SCOUTING of GRAINS

## *Insect Pests: Overall = minimal*

Location	Grain type	Cereal Leaf Beetle	Thrips	Brown Wheat Mite	Wire worm	Slugs	Mexican Bean Beetle	Aphids
Alburgh, VT	Spring Wheat	X	X	X	X			
Alburgh, VT	Winter Wheat	X	X	X	X			
Berlin, VT	HRWW	X	X			X		
Bridport, VT	HRWW		X					X
Bridport, VT	SWWW		X					
Essex, NY	Spring Barley	X	X					
Glover, VT	HRSW	X	X	X		X	X	
North Troy, VT	HRSW	X	X	X				
Northfield, MA	HRWW	X	X					
Northfield, MA	HRWW	X	X					
Northfield, MA	SWWW	X	X					X
Northfield, MA	HRSW	X	X					
Northfield, MA	HRSW	X	X					
Shelburne, VT	HRWW		X					
Shelburne, VT	SWWW		X					



Thrips:

Cereal leaf beetle:

Not an insect  
but still a pest!



QUESTIONS???

# The 13th Annual Grain Growers Conference

## “Changing Crops for a Changing World”

Many thanks to our sponsors and exhibitors for their generous support and contributions!

