

## Lady beetles

Commonly predaceous as adults and larva. The adults also feed on pollen, nectar, and aphid honeydew



W. Sterling, Texas A & M

### Larva



J. Kalisch, UNL Entomology

## Soldier beetles / Ground beetles

Adults consume grasshopper eggs, aphids, caterpillars and other soft bodied insects. Adults also may feed on pollen and nectar.

### Soldier beetle



Brett Blaauw, MSU Entomology

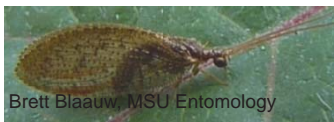
### Ground beetle



Marlin E. Rice, Iowa State University

## Lacewings (Brown and green)

Adults and larvae are predaceous. The adults also feed on pollen, nectar, and aphid honeydew



Brett Blaauw, MSU Entomology



Brett Blaauw, MSU Entomology

### Larva



Brett Blaauw, MSU Entomology

## Assassin bugs / Damsel Bugs

Predators as adults and larvae, feeding on aphids, caterpillars, and other pests.

### Assassin bug



Robert L. Zimlich, BugGuide.net

### Damsel bug



Tom Murray, BugGuide.net

## Parasitic wasps

Some adults are predaceous, but most feed on pollen and nectar. Eggs are laid and larvae develop in or on host



Tom Murray, BugGuide.net



Tom Murray, BugGuide.net

## Yellow jackets, hornets, and wasps

Primarily predaceous, may feed on nectar



Jo Ann Poe-McGavin, BugGuide.net



Brett Blaauw, MSU Entomology

## Minute pirate bug

Both immature adults and larvae feed on a variety of small prey including thrips, spider mites, insect eggs, aphids, and small caterpillars



Tom Murray, BugGuide.net



Mike Quinn, BugGuide.net

## Hoverflies

Look like bees, but only have 2 wings  
Adults feed on pollen and nectar, larvae are predaceous

### Larva



Brett Blaauw, MSU Entomology



Brett Blaauw, MSU Entomology

# Common Crop Pollinators

## Honeybees

The most commonly domesticated bee. Often used in fruit production for their pollination services.



Brett Blaauw, MSU Entomology



Brett Blaauw, MSU Entomology

## Mason bees and leaf-cutter bees

Names reflect the materials nest cells are made from - soil or leaves. Efficient pollinators that carry pollen on ventral side of abdomen.



Brett Blaauw, MSU Entomology



Edward Trammel, BugGuide.net

## Bumblebees

A common native bee efficient at pollinating flowers. Domesticated bumblebees are also available for pollination services.



Brett Blaauw, MSU Entomology



Brett Blaauw, MSU Entomology

## Blue orchard bee

A stingerless mason bee, commonly domesticated for fruit pollination.



Marvin Smith, BugGuide.net



Sean McCann, BugGuide.net

## Yellow-faced bees and Cellophane bees

Small, dark colored bees. Commonly nest in the ground or in other natural cavities. Cellophane bees line nests with a thin transparent film



Tom Murray, BugGuide.net



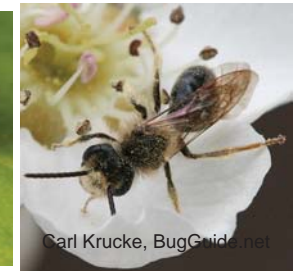
Ted Kroplewnicki, BugGuide.net

## Mining bees

Small to moderate-sized, solitary, and nest in the ground.



Tom Murray, BugGuide.net



Carl Krucke, BugGuide.net

## Sweat bees

Small, dark colored and sometimes metallic. Either nest in the ground or in wood.



Tom Murray, BugGuide.net



Brett Blaauw, MSU Entomology

## Hoverflies

Look like bees, but only have 2 wings. Adults feed on pollen and nectar, larvae are predaceous



Brett Blaauw, MSU Entomology



Brett Blaauw, MSU Entomology