

National Livestock and Poultry Environmental Learning Center

LPE Center News



July, 2008

Connecting Experts With Those Advising Producers

<http://www.extension.org>

In this issue:

- *Webcasts Now Available "To-Go".....1*
- *Grant Program Is Seeking Innovative Manure Management Technologies.....2*
- *Disaster Assistance Guide for Farmers Is Updated.....2*
- *4-H Manure Management Curriculum Released in Colorado2*

July Webcast

"Federal Air Quality Regulations and Update on NAEMS" "

July 1, 2008 at 2:30 pm (EDT) [More...](#)

LPELC Home page:

<http://www.extension.org> and click on "Animal Manure Management".

Continuing

Education Units: are available through the Certified Crop Adviser program and American Registry of Professional Animal Scientists [More...](#)

LPE Coordinator:

Jill Heemstra
jheemstra@unl.edu

LPE Learning Center Webcast Series

Editors note: The webcast series is on "summer vacation" during August, but will resume in September with the third in a series of air-quality presentations.

Webcasts Now Available "To-Go"

A recent update to the software behind the LPE Learning Center virtual meeting room now allows us to create downloadable Flash videos of webcast presentations. Previously, webcasts that utilized this software had to be played back over a live Internet connection. This precluded their use in local programs held in locations without Internet access. The new software update will allow educators to download the Flash file and play it back at anywhere a laptop computer can go.

Which webcasts have this option? All

webcasts since October, 2007 have utilized the virtual meeting room and can be converted to downloadable Flash

video files. Webcasts from September, 2007 and earlier utilize Real Player for playback. The latest update to the free version of [Real Player](#) allows you to record those webcasts and save the file on your computer.

What is the difference between the downloadable file and the streamed video?

The downloadable file is generally fairly large and requires the computer to download it all before it can be played back. The main advantage is that, after the file is downloaded, you no longer need an Internet connection for playback. The streamed video link allows playback to begin very quickly, but requires an uninterrupted Internet connection to continue to play the webcast.

Where do I get the downloadable files? Each webcast is recorded and archived at: http://www.extension.org/pages/Archived_Webcasts%2C_Livestock_and_Poultry_Environmental_Learning_Center.

What if the webcast I want does not have the downloadable files posted? All new webcasts will have downloadable files posted to the archive within a few days. Past webcasts will have downloadable files added as time allows. If you would like to use a particular webcast in a program, contact Jill Heemstra jheemstra@unl.edu and we will do our best to accommodate your request.

View Individual Presentations

- "Ambient Ammonia: Air Quality and Health Impacts" Randy Martin, Utah State University Power Point slides | Downloadable Flash video (16 MB) | Streamed Video To access this segment via streamed video, click on the link and move the time slider (bottom of screen) to 5:20.
- "Air National Park" Jessica Davis, Downloadable Flash video (10 MB) | Streamed Video To access this segment via streamed video, click on the link and move the time slider (bottom of screen) to 25:42.
- "Mitigating Ammonia Emissions From Animal Agriculture" Plus Ndegwa, Washington State University Power Point slides | Downloadable Flash video (12 MB) | Streamed Video To access this segment via streamed video, click on the link and move the time slider (bottom of screen) to 40:00.

Each webcast archive will include a link to downloadable Flash video

Grant Program Is Seeking Innovative Manure Management Technologies

Small businesses often have great ideas, but may lack the resources to research the feasibility of the concept or technology. To support small businesses and spur private sector innovation, the USDA Small Business Innovation Research (SBIR) program competitively awards grants to small business in several areas, one of which is manure management.

Applications for Phase I grants need to be submitted by September 4, 2008. More information about the SBIR program is at: <http://www.csrees.usda.gov/funding/sbir/sbir.html>.

In December, 2007, the LPE Learning Center hosted a webcast on the program and two of its success stories. [Visit the webcast archive...](#)

Disaster Assistance Guide for Farmers Updated

Midwestern floods this spring have reinforced the importance of disaster preparedness for livestock and poultry producers. There are a number of resources available on emergency planning and the "how-to" guides for mortality management and dealing with the immediate impacts of a flood or storm.

An equally important part of dealing with disasters is the financial viability of the farm afterwards. The sixth edition of the "Farmers Guide to Disaster Assistance" includes information on programs included in the 2008 Farm Bill and many more, all designed to assist in the financial recovery of a farm. For more information about the book go to:

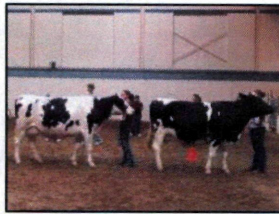
<http://www.flaginc.org/topics/disaster/index.php>

National Resources

4-H Manure Management Curriculum Released in Colorado

4-H projects are designed to teach life skills to young people and prepare them to make educated career choices. In Colorado alone, over 13,000 youth are in livestock projects.

A major component of livestock production today is the emphasis on proper manure management. Several faculty members at Colorado State University reviewed 4-H projects and realized it was possible to excel in that area and not know anything about manure management or the environmental impacts of livestock.



In response, they created, pilot-tested, and released a manure management curriculum that emphasizes "learning by doing". The curriculum includes topics such as: livestock and the community, health, water quality, air quality, composting, and economics.

"We hope that this curriculum will expose young people to the potential environmental impacts of livestock production and best management practices for manure management. We believe this will be useful not only for those that become livestock producers, but also those that choose other career paths and become business or community leaders in the future."

Jessica Davis, Professor Soil & Crop Sciences, Colorado State University

The authors of the curriculum are Adriane Elliot, Kathy Doesken, and Jessica Davis. For more information, visit:

http://www.extsoilcrop.colostate.edu/Soils/documents/manure_webviewing.pdf.



This material is based upon work supported by the Cooperative State Research, Education, and Extension Service, U.S. Department of Agriculture, under Agreement No. 2005-51130-03315. Any opinions, findings,

conclusions, or recommendations expressed in this publication are those of the author(s) and do not necessarily reflect the view of the U.S. Department of Agriculture.