

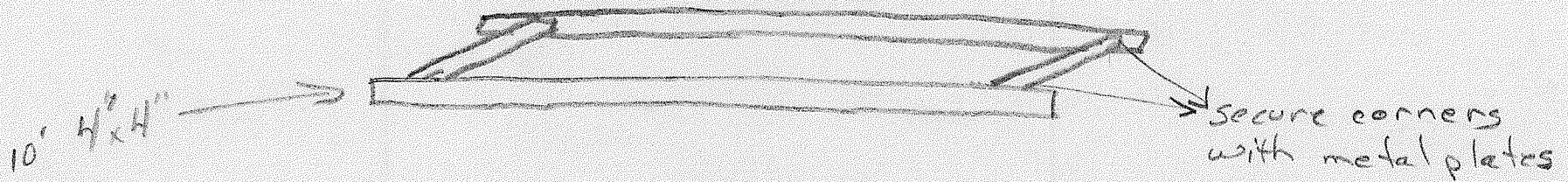
Pastured Rabbit Cage Development

FNE01-354

Arrowhead Farm

①
* This joins
the Financial Report
(U.S. Post office) and bills previously
sent APR
the report already
sent (via email)

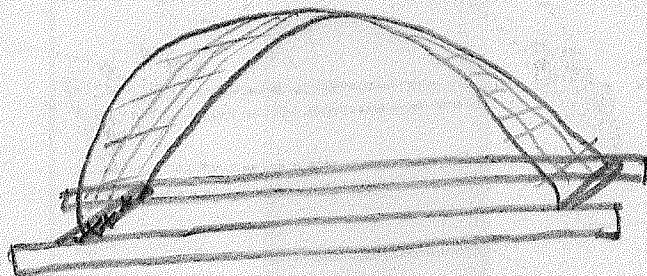
Wooden Frame



Panel

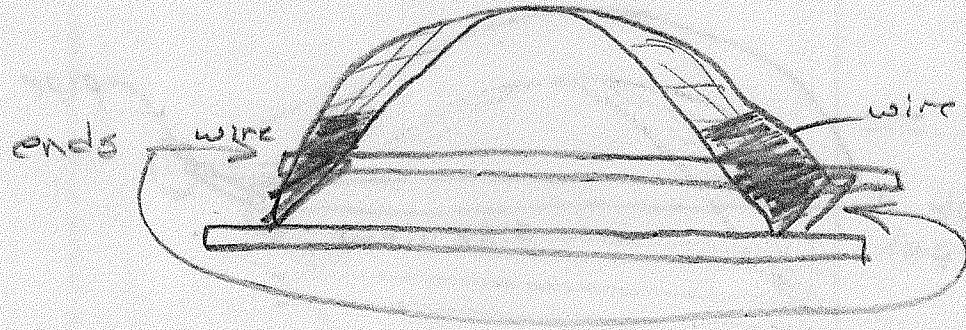
(2)

To the inside of wooden frame, fix the panel ends. I use 1/2" - 2" fence staples. Be generous!

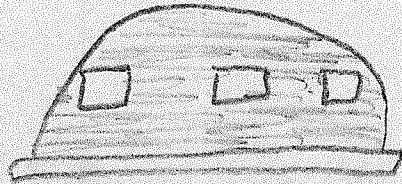
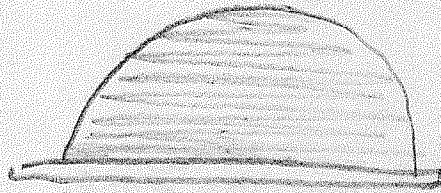


Apply 1" x 2" welded wire to outside all the way around.

For ease, I will try to note this with shading.



one side

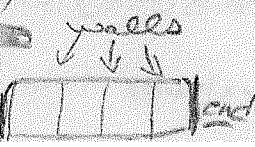


other end with door cuts

I made the doors

Ⓡ 14" x Ⓢ 18" and used 1/2" welded wire

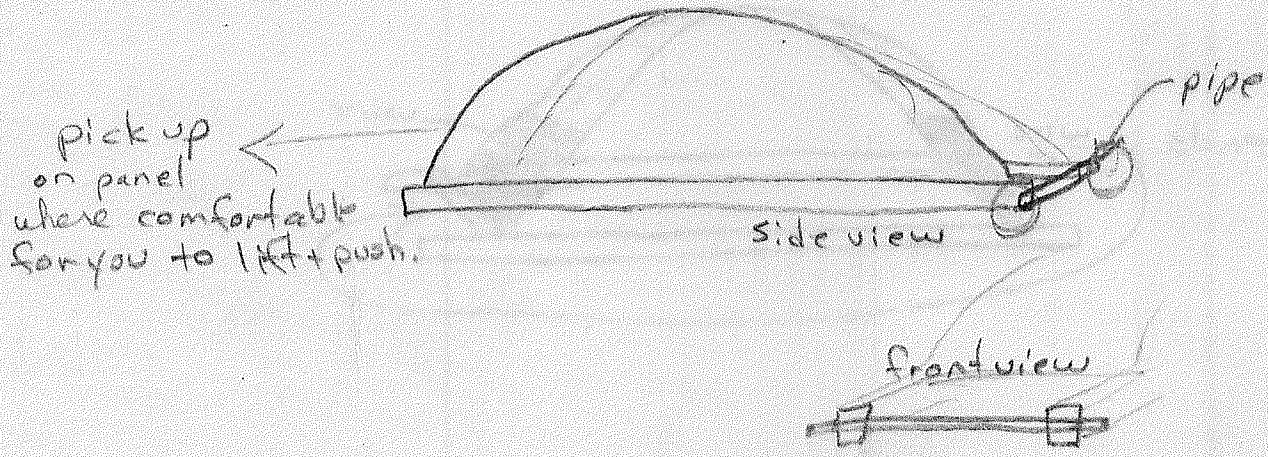
* Before the last side is clipped on at top be sure to create (using 1" x 2" wire) walls 1 1/2' high for apartments. I



A Fix wheels and canvas.

(4)

- ① Shaft from wheels should be 1-1/2' long so they don't rick out.
- ② canvas needs to be large so as to cover top and three sides. I use a larger one and fold extra underneath. This gives me the extra canvas for times when torrential rain is expected and I wish to cover all four sides. 20'x20' is plenty.



insert shaft into pipe when preparing to move. only have pipe/wheels set upon one end and hang them on edge when you're through moving. so it's an on/off situation. very versital.

10" wheel works great,

x wheel's shafts are inserted into pipe at moving time.

x canvas is bungied on and positioned on top + sides for maximum comfort for rabbits in area weather conditions.

xxx Did forget - place 1/4" plywood or 1/4" meshwire into corner for bunnies to learn to get on while moving.