



Individual tree diameter, height, and species are entered into 1/5<sup>th</sup> acre stand map.

Counting items in quad frame and making bar graph.



Using survey map, compass, 50-foot cloth tapes and stakes, fifth graders find their property corners.



Interlaken youth review math, apply pelletized calcite limestone and plant trees.  
(photo enhanced)





A nice locust seedling, fresh from the nursery is more succulent than the existing understory vegetation. Successful locust seedling (exact center of photo) between two downed red pine. Temporarily, the logs reduce deer traffic. Later they decompose, providing organic matter so regeneration can persist in the understory.



Using log price tables students determine that a red pine log sells for less than a bag of compost.

Adult Interlaken  
sawfly borer.  
(center of photo)



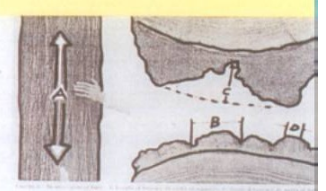
Woodpecker  
boxes installed  
with aluminum  
nails and wide  
bottomed ladder.



Don't leave flagging on trees.  
Seedling is nipped off by rabbit at the orange tag after a snowfall. Perhaps the color attracted investigation. (In photo- rabbit tracks, pellets, nipped but not eaten twig.)

## BARK Index

$$Q = 0.1572 \times A + 0.0185 \times B + 0.1161 \times C - 0.1597 \times D - 0.0096 \times dbh$$



Diameter of breast height (in centimeters; convert from inches using cm = 2.54 \* in)

Number of furrows at 4.5 feet (count going around the tree)

Bark Date (Measure of furrows at 4.5 feet; beginning with furrow with furrow on the right; use a ruler for line support for Width of Segment and Depth (see photo))

Furrow Number	Length of Furrow (cm)				Width of Bark Segment				Depth of Furrow				Width of Bark Strip			
	191	192	193	194	195	196	197	198	199	200	201	202	203	204	205	206
A																
B																
C																
D																

Locust tree #4 was unfortunately later part of a clearcut. However, roots were saved and we have progeny from this "four-father".

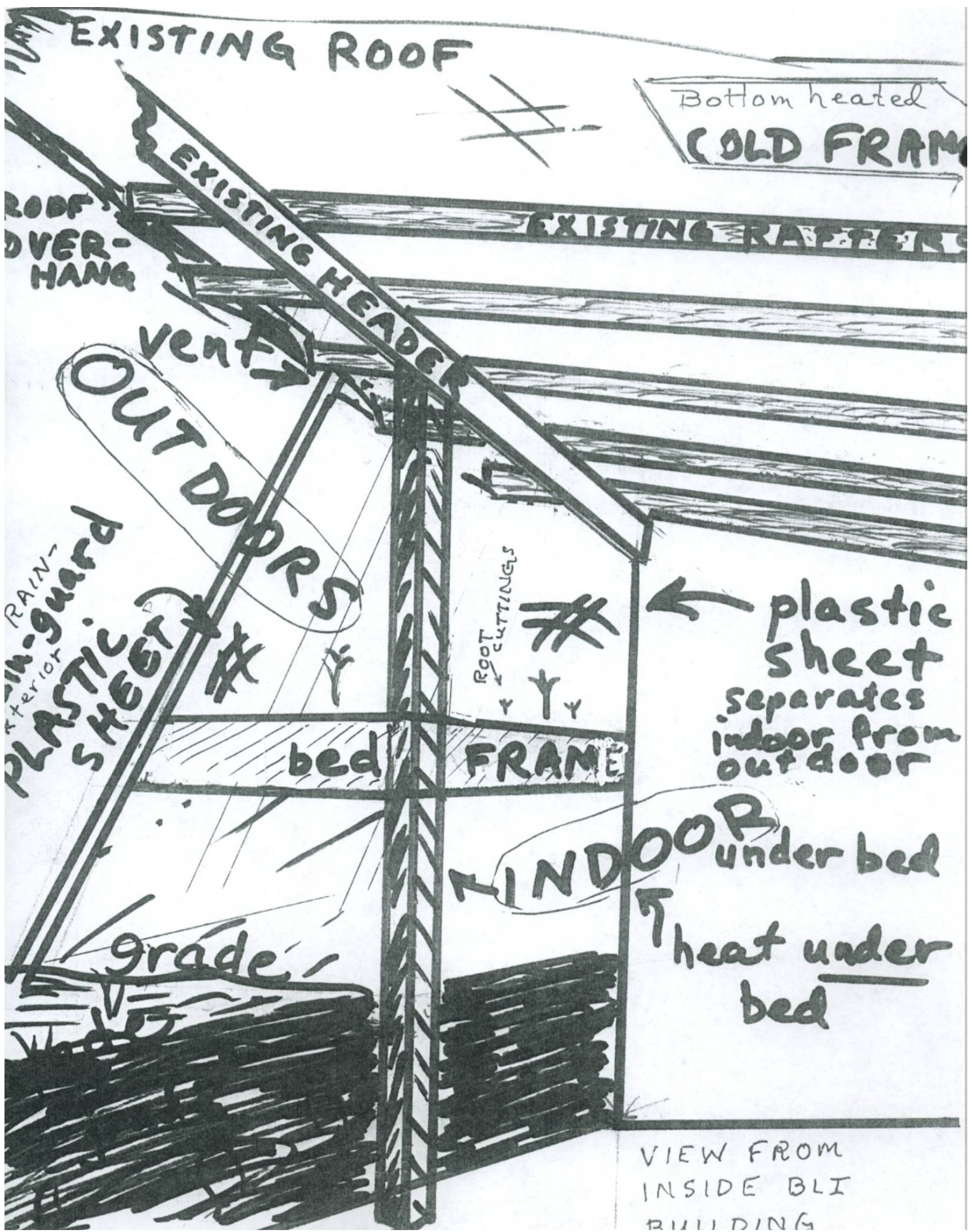


Nursery fencing is strung on existing saplings (carefully) cut tall. Seedlings have light from above in this small sixty foot clearing.



Distorted photo of bottom-heated cold frame for successful growth of superior locust root cuttings. (The interior, plastic sheet window is removed – see sketch on next page.)





EXISTING ROOF

Bottom heated  
COLD FRAME

ROOF  
OVER-  
HANG

EXISTING HEADER

EXISTING RAFTERS

vent

OUT DOORS

RAIN-  
GUARD  
PLASTIC  
SHEETS

ROOT  
CUTTINGS

← plastic  
sheet  
separates  
indoor from  
outdoor

bed FRAME

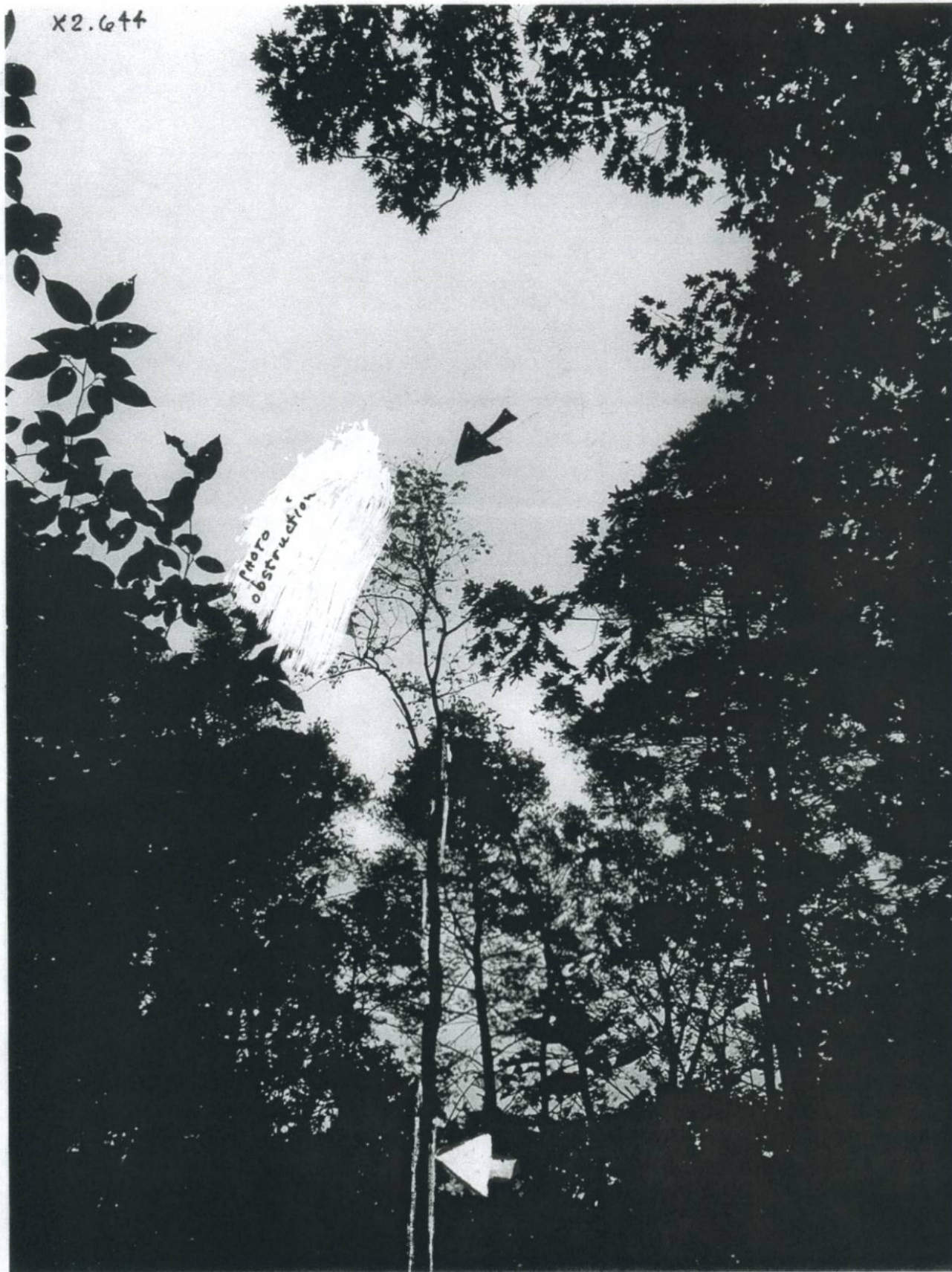
WINDOW under bed

Grade

↑ heat under  
bed

VIEW FROM  
INSIDE BLI  
BUILDING

X2.644



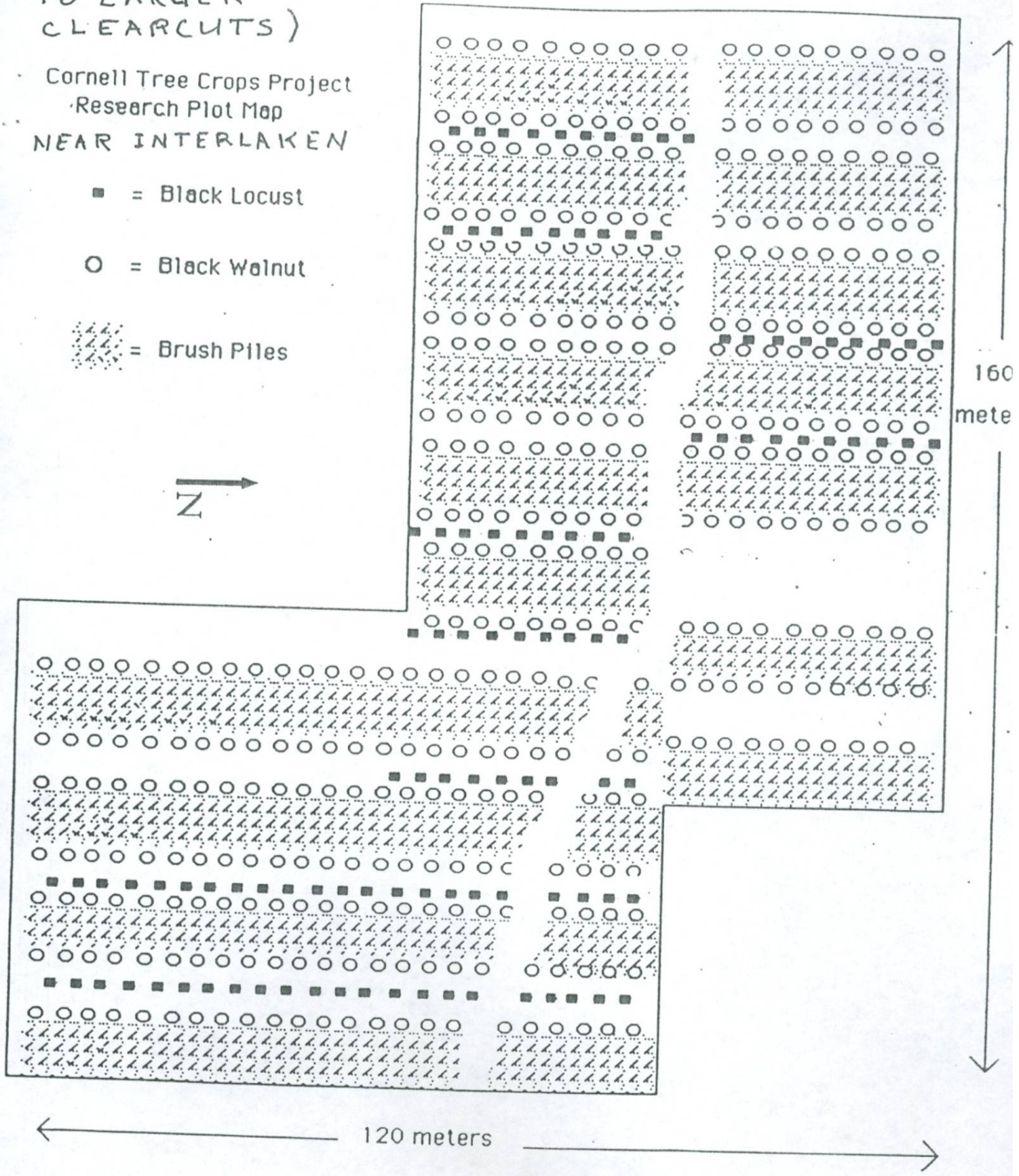
Eight-year-old, thirty-foot tall v. "Haudenasaunee" planted into small clearing in hardwoods at BLI.

(FOR COMPARISON  
TO LARGER  
CLEARCUTS)

@ LAKE ROAD "D"

Cornell Tree Crops Project  
Research Plot Map  
NEAR INTERLAKEN

- = Black Locust
- = Black Walnut
- ▨ = Brush Piles



160  
mete

120 meters