



**SHE MARRIED HIM??!!**  
**AND THEY HAVE 7 KIDS??**  
**classmates.com**



**Find Your old  
School Here**

- City -

- State -

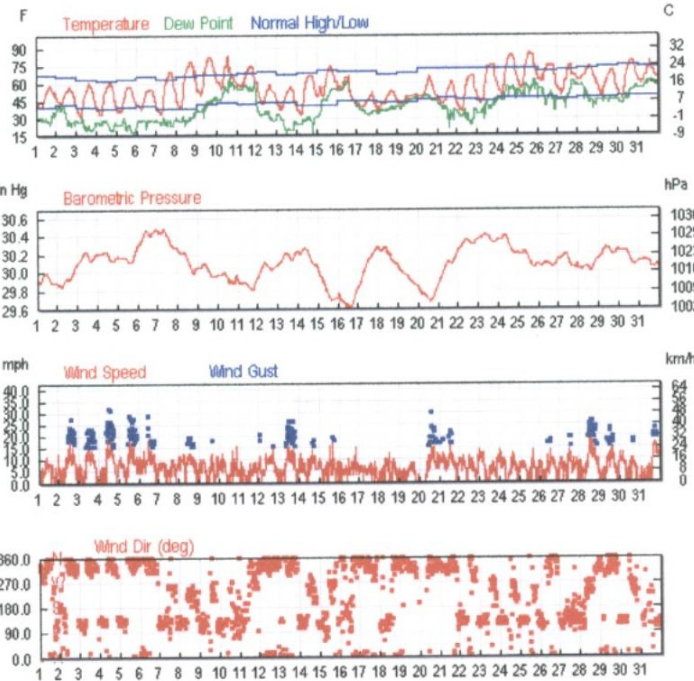
**Search**

## History for Rutland, VT

Month of May, 2007

### Monthly Summary

	Max:	Avg:	Min:	Sum:
<b>Temperature:</b>				
Max Temperature	86 °F / 30 °C	68 °F / 19 °C	48 °F / 8 °C	
Mean Temperature	70 °F / 21 °C	56 °F / 13 °C	44 °F / 6 °C	
Min Temperature	62 °F / 16 °C	44 °F / 6 °C	30 °F / -1 °C	
<b>Degree Days:</b>				
Heating Degree Days (base 65)	21	10	0	305
Cooling Degree Days (base 65)	6	1	0	22
Growing Degree Days (base 50)	20	7	0	219
<b>Dew Point:</b>				
Dew Point	64 °F / 17 °C	40 °F / 4 °C	16 °F / -8 °C	
<b>Precipitation:</b>				
Precipitation	15.20 in / 38.6 cm	0.59 in / 1.5 cm	0.00 in / 0.0 cm	17.93 in / 45.54 cm
Snowdepth	-	-	-	-
<b>Wind:</b>				
Wind	22 mph / 35 km/h	6 mph / 10 km/h	0 mph / 0 km/h	
Gust Wind	32 mph / 52 km/h	19 mph / 30 km/h	16 mph / 26 km/h	
<b>Sea Level Pressure:</b>				
Sea Level Pressure	30.48 in / 1032 hPa	30.08 in / 1019 hPa	29.61 in / 1003 hPa	



### Monthly Calendar Overview

[« Previous Month](#)

[« 2006](#)

May 2007

[2008 »](#)

[Next Month »](#)

Sunday	Monday	Tuesday	Wednesday	Thursday	Friday	Saturday
		<u>1</u> Actual: 59   39 Precip: 0.00 Average: 68   40 Precip: 0.07	<u>2</u> Actual: 57   42 Precip: 0.06 Average: 66   42 Precip: 0.14	<u>3</u> Actual: 60   30 Precip: 0.00 Average: 64   40 Precip: 0.17	<u>4</u> Actual: 60   33 Precip: 0.00 Average: 63   39 Precip: 0.11	<u>5</u> Actual: 57   35 Precip: 0.00 Average: 64   40 Precip: 0.04
<u>6</u> Actual: 55   37 Precip: 0.00 Average: 66   41 Precip: 0.16	<u>7</u> Actual: 69   33 Precip: 0.00 Average: 64   39 Precip: 0.11	<u>8</u> Actual: 78   39 Precip: 0.00 Average: 66   38 Precip: 0.06	<u>9</u> Actual: 82   50 Precip: 0.00 Average: 67   42 Precip: 0.13	<u>10</u> Actual: 84   55 Precip: 0.25 Average: 68   43 Precip: 0.11	<u>11</u> Actual: 75   57 Precip: 0.26 Average: 69   42 Precip: 0.14	<u>12</u> Actual: 60   42 Precip: 0.13 Average: 70   44 Precip: 0.16
<u>13</u> Actual: 57   37 Precip: 0.00 Average: 67   44 Precip: 0.14	<u>14</u> Actual: 66   32 Precip: 0.00 Average: 69   41 Precip: 0.08	<u>15</u> Actual: 75   48 Precip: 0.13 Average: 71   41 Precip: 0.08	<u>16</u> Actual: 66   46 Precip: 1.15 Average: 70   45 Precip: 0.09	<u>17</u> Actual: 50   39 Precip: 0.03 Average: 70   45 Precip: 0.13	<u>18</u> Actual: 63   35 Precip: 0.00 Average: 68   43 Precip: 0.09	<u>19</u> Actual: 48   42 Precip: 0.17 Average: 69   44 Precip: 0.13
<u>20</u> Actual: 66   48 Precip: 0.50 Average: 72   46 Precip: 0.13	<u>21</u> Actual: 60   42 Precip: 0.00 Average: 72   47 Precip: 0.12	<u>22</u> Actual: 66   35 Precip: 0.00 Average: 72   46 Precip: 0.02	<u>23</u> Actual: 75   42 Precip: 0.00 Average: 73   45 Precip: 0.04	<u>24</u> Actual: 84   50 Precip: 0.00 Average: 72   47 Precip: 0.16	<u>25</u> Actual: 86   55 Precip: 0.00 Average: 72   47 Precip: 0.10	<u>26</u> Actual: 75   60 Precip: 0.00 Average: 70   47 Precip: 0.06
<u>27</u> Actual: 75   48 Precip: 0.05 Average: 71   46 Precip: 0.08	<u>28</u> Actual: 73   62 Precip: 0.00 Average: 72   47 Precip: 0.07	<u>29</u> Actual: 69   48 Precip: 15.20 Average: 74   47 Precip: 0.10	<u>30</u> Actual: 78   46 Precip: 0.00 Average: 75   48 Precip: 0.15	<u>31</u> Actual: 78   59 Precip: 0.00 Average: 74   49 Precip: 0.20		

Month Precipitation - Actual month total: Average month total: 3.37

Calendar Key

Sunny Clear	Sunny	Mostly Sunny Partly Cloudy	Mostly Cloudy Partly	Cloudy	Rain	Snow
Hail Flurries	Thunderstorms	Hazy Fog	Sleet	denotes 'chance of'	Unknown	

Actual: 90 | 58

Precip: 0.00

Average: 71 | 53

Precip: 0.03

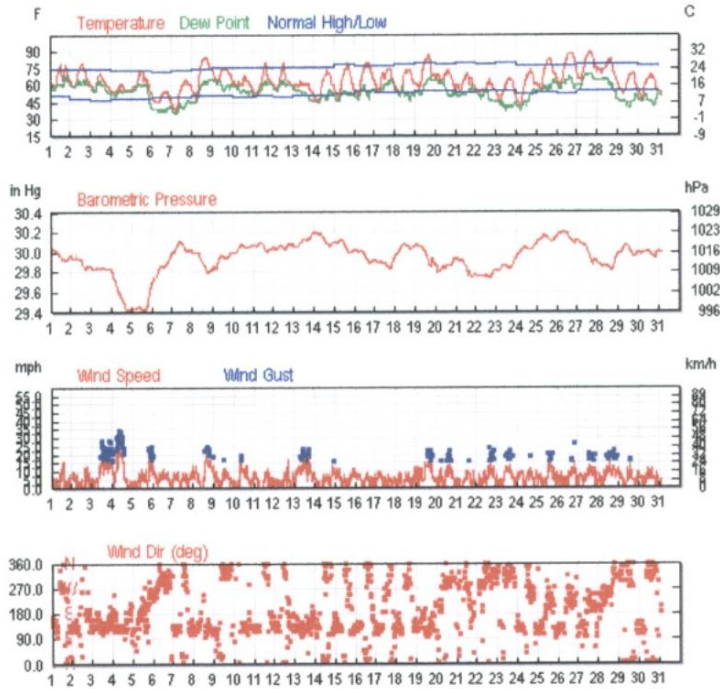
-50 -30 0 30 60 90 120

## Daily Observations

2007 May	Temp (°F)			Dew Point (°F)			Humidity (%)			Sea Level Pressure (in)			Visibility (mi)			Wind (mph)		Gust Speed (mph)	Precip (in)	Events
	high	avg	low	high	avg	low	high	avg	low	high	avg	low	high	avg	low	high	avg	high	sum	
<a href="#">1</a>	59	49	39	36	31	25	70	51	27	30.00	29.90	29.89	10	10	10	12	5	16	0.00	
<a href="#">2</a>	57	50	42	41	38	25	87	56	31	29.97	29.88	29.85	10	10	10	18	5	28	0.06	
<a href="#">3</a>	60	45	30	30	28	19	86	48	23	30.22	30.11	30.10	10	10	9	17	4	23	0.00	
<a href="#">4</a>	60	46	33	28	26	21	75	46	22	30.23	30.20	30.13	10	10	10	20	1	32	0.00	
<a href="#">5</a>	57	46	35	30	25	19	65	48	25	30.18	30.17	30.11	10	10	10	22	9	29	0.00	
<a href="#">6</a>	55	46	37	28	26	21	70	54	28	30.46	30.32	30.29	10	10	10	18	8	29	0.00	
<a href="#">7</a>	69	51	33	30	28	23	75	43	18	30.48	30.46	30.29	10	10	8	10	6	-	0.00	
<a href="#">8</a>	78	58	39	32	28	23	65	39	16	30.25	30.24	30.03	10	10	10	13	8	20	0.00	
<a href="#">9</a>	82	66	50	45	37	30	58	44	23	30.10	30.05	29.96	10	10	4	13	4	18	0.00	
<a href="#">10</a>	84	70	55	64	46	46	83	58	35	30.00	29.98	29.88	10	9	2	14	7	29	0.25	Thunderstorm
<a href="#">11</a>	75	66	57	59	57	54	94	75	47	29.93	29.91	29.81	10	9	4	9	4	-	0.26	
<a href="#">12</a>	60	51	42	39	38	28	70	56	31	30.11	30.00	29.94	10	10	10	15	8	21	0.13	
<a href="#">13</a>	57	47	37	34	33	16	81	47	23	30.21	30.09	30.09	10	10	10	16	1	26	0.00	
<a href="#">14</a>	66	49	32	30	25	25	75	46	24	30.27	30.23	30.11	10	10	10	14	7	20	0.00	
<a href="#">15</a>	75	62	48	55	35	30	93	63	41	30.03	29.92	29.69	10	10	8	17	9	22	0.13	
<a href="#">16</a>	66	56	46	61	55	45	94	94	83	29.76	29.73	29.61	10	4	0	15	6	17	1.15	
<a href="#">17</a>	50	44	39	41	40	32	93	79	54	30.19	29.95	29.83	10	8	2	8	7	-	0.03	
<a href="#">18</a>	53	44	35	39	34	34	93	79	54	30.28	30.27	30.12	10	9	1	13	3	16	0.00	
<a href="#">19</a>	48	45	42	46	39	37	93	82	81	30.07	30.04	29.88	10	7	2	8	3	-	0.17	
<a href="#">20</a>	66	57	48	50	46	46	94	79	49	29.83	29.81	29.67	10	7	1	17	0	30	0.50	
<a href="#">21</a>	60	51	42	43	43	21	87	66	25	30.12	29.95	29.86	10	10	7	17	10	22	0.00	
<a href="#">22</a>	66	50	35	37	35	23	81	50	19	30.36	30.26	30.25	10	10	10	12	9	16	0.00	
<a href="#">23</a>	75	58	42	45	34	28	76	47	25	30.42	30.37	30.33	10	10	8	13	10	16	0.00	
<a href="#">24</a>	84	67	50	57	46	45	87	60	30	30.40	30.35	30.22	10	10	10	13	10	16	0.00	
<a href="#">25</a>	86	70	55	59	54	48	82	57	29	30.23	30.20	30.06	10	8	5	14	7	16	0.00	
<a href="#">26</a>	75	68	60	55	53	39	82	58	29	30.10	30.09	30.06	10	8	3	14	7	21	0.00	
<a href="#">27</a>	75	62	48	61	46	37	87	62	39	30.19	30.14	30.05	10	10	8	14	9	20	0.05	
<a href="#">28</a>	73	68	62	59	57	43	88	56	33	30.06	30.04	30.01	10	9	6	20	3	26	0.00	
<a href="#">29</a>	69	58	48	46	45	43	87	62	40	30.27	30.15	30.15	10	10	9	15	3	23	15.20	
<a href="#">30</a>	78	62	46	54	45	41	87	61	38	30.24	30.23	30.08	10	10	5	13	11	18	0.00	
<a href="#">31</a>	78	68	59	63	55	55	88	77	54	30.13	30.12	30.05	10	10	10	16	1	21	0.00	

## Monthly Summary

	Max:	Avg:	Min:	Sum:
<b>Temperature:</b>				
Max Temperature	89 °F / 31 °C	75 °F / 23 °C	55 °F / 12 °C	
Mean Temperature	76 °F / 24 °C	64 °F / 18 °C	50 °F / 10 °C	
Min Temperature	69 °F / 20 °C	54 °F / 12 °C	37 °F / 2 °C	
<b>Degree Days:</b>				
Heating Degree Days (base 65)	14	3	0	90
Cooling Degree Days (base 65)	12	2	0	73
Growing Degree Days (base 50)	26	14	0	433
<b>Dew Point:</b>				
Dew Point	72 °F / 22 °C	54 °F / 12 °C	36 °F / 2 °C	
<b>Precipitation:</b>				
Precipitation	1.73 in / 4.4 cm	0.14 in / 0.4 cm	0.00 in / 0.0 cm	4.55 in / 11.58 cm
Snowdepth	-	-	-	-
<b>Wind:</b>				
Wind	23 mph / 37 km/h	5 mph / 9 km/h	0 mph / 0 km/h	
Gust Wind	50 mph / 80 km/h	20 mph / 32 km/h	16 mph / 26 km/h	
<b>Sea Level Pressure:</b>				
Sea Level Pressure	30.20 in / 1023 hPa	29.96 in / 1014 hPa	29.41 in / 996 hPa	



## Monthly Calendar Overview

[« Previous Month](#)

[« 2006](#)

June 2007

[2008 »](#)

[Next Month »](#)

Sunday

Monday

Tuesday

Wednesday

Thursday

Friday

Saturday

1

Actual: 80 | 60

Precip: 0.72

Average: 75 | 51

Precip: 0.15

2

Actual: 80 | 60

Precip: 0.66

Average: 75 | 49

Precip: 0.08



« Previous Month	« 2006	June 2007				2008 »	Next Month »
Sunday	Monday	Tuesday	Wednesday	Thursday	Friday	Saturday	
					1	2	
					Actual: 80   60 Precip: 0.72 Average: 75   51 Precip: 0.15	Actual: 80   60 Precip: 0.66 Average: 75   49 Precip: 0.08	
3	4	5	6	7	8	9	
Actual: 71   57 Precip: 0.00 Average: 75   48 Precip: 0.13	Actual: 62   53 Precip: 0.65 Average: 74   49 Precip: 0.11	Actual: 73   57 Precip: 0.03 Average: 74   49 Precip: 0.03	Actual: 55   46 Precip: 0.00 Average: 73   50 Precip: 0.18	Actual: 66   37 Precip: 0.00 Average: 74   50 Precip: 0.16	Actual: 86   48 Precip: 0.00 Average: 75   51 Precip: 0.11	Actual: 77   64 Precip: 0.00 Average: 76   51 Precip: 0.06	
10	11	12	13	14	15	16	
Actual: 69   60 Precip: 0.00 Average: 77   50 Precip: 0.08	Actual: 80   53 Precip: 0.07 Average: 77   51 Precip: 0.15	Actual: 80   57 Precip: 1.73 Average: 76   50 Precip: 0.16	Actual: 64   57 Precip: 0.00 Average: 77   51 Precip: 0.14	Actual: 73   46 Precip: 0.00 Average: 77   52 Precip: 0.10	Actual: 78   48 Precip: 0.00 Average: 79   53 Precip: 0.06	Actual: 80   51 Precip: 0.00 Average: 78   55 Precip: 0.20	
17	18	19	20	21	22	23	
Actual: 73   55 Precip: 0.01 Average: 78   54 Precip: 0.14	Actual: 73   53 Precip: 0.01 Average: 79   54 Precip: 0.10	Actual: 87   57 Precip: 0.00 Average: 80   56 Precip: 0.09	Actual: 73   64 Precip: 0.09 Average: 79   56 Precip: 0.08	Actual: 71   53 Precip: 0.07 Average: 80   54 Precip: 0.09	Actual: 66   53 Precip: 0.51 Average: 79   55 Precip: 0.16	Actual: 66   46 Precip: 0.00 Average: 80   55 Precip: 0.19	
24	25	26	27	28	29	30	
Actual: 73   42 Precip: 0.00 Average: 78   53 Precip: 0.05	Actual: 84   57 Precip: 0.00 Average: 78   54 Precip: 0.14	Actual: 87   60 Precip: 0.00 Average: 78   53 Precip: 0.15	Actual: 89   64 Precip: 0.00 Average: 79   55 Precip: 0.06	Actual: 84   69 Precip: 0.00 Average: 79   55 Precip: 0.07	Actual: 71   51 Precip: 0.00 Average: 79   55 Precip: 0.22	Actual: 69   46 Precip: 0.00 Average: 78   56 Precip: 0.24	

Month Precipitation - Actual month total: Average month total: 3.68

Calendar Key

		Mostly Cloudy Partly				
Sunny Clear	Sunny	Mostly Sunny Partly Cloudy	Cloudy	Rain	Snow	
Hail Flurries	Thunderstorms	Hazy Fog	Sleet	denotes 'chance of'	Unknown	

Actual:	90   58	Data Category
Precip:	0.00	Condition
Average:	71   53	High Temp.
Precip:	0.03	Lo Temp.
		Precip. (in inches)
		Daily Avg. Temp.
		Temps in °F
		-60 -30 0 30 60 90 120

## Daily Observations

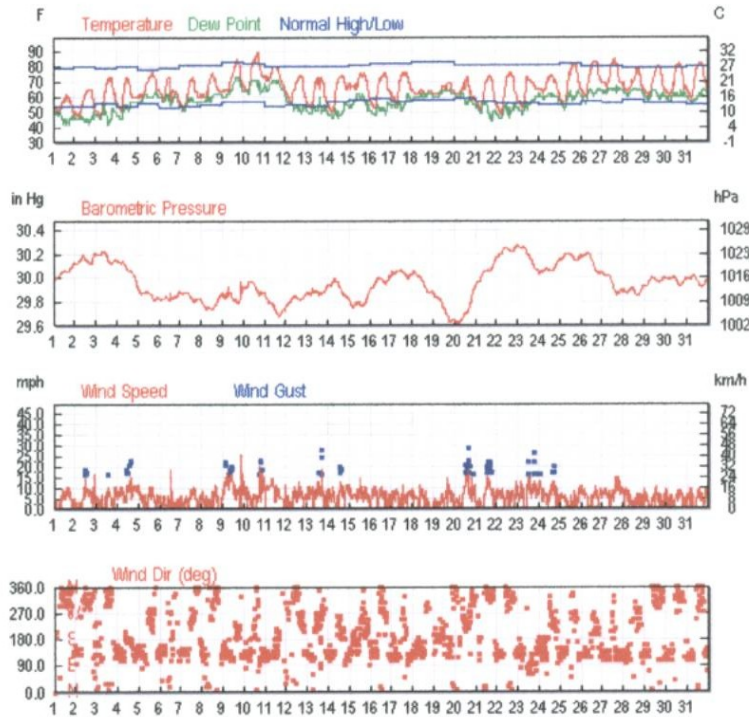
2007	Temp (°F)			Dew Point (°F)			Humidity (%)			Sea Level Pressure (in)			Visibility (mi)			Wind (mph)		Gust Speed (mph)	Precip (in)	Events
	high	avg	low	high	avg	low	high	avg	low	high	avg	low	high	avg	low	high	avg	high	sum	
<u>1</u>	80	70	60	72	59	57	94	77	54	30.06	30.05	29.92	10	7	2	16	7	50	0.72	Thunderstorm
<u>2</u>	80	70	60	66	62	59	100	80	54	29.97	29.96	29.83	10	6	2	14	7	17	0.66	Thunderstorm
<u>3</u>	71	64	57	64	60	55	100	93	77	29.86	29.86	29.83	10	6	0	21	5	29	0.00	
<u>4</u>	62	58	53	57	53	52	94	91	77	29.82	29.69	29.43	10	10	6	23	11	34	0.65	
<u>5</u>	73	65	57	63	55	55	100	82	61	29.46	29.44	29.41	10	10	6	12	3	18	0.03	
<u>6</u>	55	50	46	41	40	37	76	70	51	29.88	29.71	29.69	10	10	10	14	12	20	0.00	
<u>7</u>	66	52	37	45	40	36	93	67	42	30.11	30.00	29.99	10	10	10	10	5	-	0.00	
<u>8</u>	86	67	48	64	46	45	93	69	48	30.01	30.00	29.81	10	10	10	20	7	23	0.00	
<u>9</u>	77	70	64	66	66	55	94	75	50	29.96	29.84	29.84	10	8	3	12	6	18	0.00	
<u>10</u>	69	64	60	61	61	54	94	85	60	30.08	30.00	29.99	10	9	7	17	3	21	0.00	
<u>11</u>	80	66	53	64	53	50	94	81	54	30.10	30.07	29.99	10	10	10	12	9	17	0.07	Thunderstorm
<u>12</u>	80	68	57	64	59	55	100	83	54	30.08	30.05	30.02	10	8	0	17	3	40	1.73	Thunderstorm
<u>13</u>	64	62	57	59	58	48	94	87	68	30.14	30.05	30.05	10	9	2	20	5	23	0.00	
<u>14</u>	73	60	46	54	46	45	100	68	43	30.20	30.20	30.07	10	9	3	8	6	-	0.00	
<u>15</u>	78	63	48	55	51	46	93	65	39	30.13	30.10	29.99	10	10	10	12	7	-	0.00	
<u>16</u>	80	66	51	61	52	48	88	65	34	30.02	30.02	29.89	10	10	10	9	9	-	0.00	
<u>17</u>	73	64	55	64	57	54	94	78	60	29.92	29.91	29.84	10	10	10	10	4	-	0.01	
<u>18</u>	73	63	53	59	57	46	100	67	38	30.09	29.96	29.96	10	8	0	9	1	-	0.01	
<u>19</u>	87	72	57	66	53	52	82	68	48	30.08	30.06	29.86	10	10	10	15	6	23	0.00	
<u>20</u>	73	68	64	64	64	50	94	73	44	29.86	29.83	29.79	10	9	4	14	3	22	0.09	
<u>21</u>	71	62	53	61	53	50	94	73	53	29.93	29.93	29.74	10	10	10	10	1	18	0.07	Thunderstorm
<u>22</u>	66	60	53	55	55	46	94	84	52	29.79	29.76	29.73	10	9	1	14	0	24	0.51	
<u>23</u>	66	56	46	46	46	37	93	64	40	29.86	29.82	29.81	10	10	10	14	3	23	0.00	
<u>24</u>	73	58	42	52	43	37	87	64	40	30.05	29.96	29.96	10	10	10	12	7	22	0.00	
<u>25</u>	84	70	57	64	55	54	94	64	39	30.17	30.11	30.10	10	10	10	15	2	22	0.00	
<u>26</u>	87	74	60	68	60	57	94	66	40	30.20	30.17	30.09	10	7	0	12	6	20	0.00	
<u>27</u>	89	76	64	70	61	57	88	72	52	30.12	30.11	29.87	10	5	0	14	4	22	0.00	
<u>28</u>	84	76	69	66	64	55	83	68	37	29.89	29.88	29.81	10	10	1	15	4	21	0.00	
<u>29</u>	71	61	51	48	48	39	82	58	35	30.07	29.98	29.95	10	10	10	14	8	17	0.00	
<u>30</u>	69	58	46	52	48	45	93	66	43	30.01	29.99	29.96	10	10	10	12	7	18	0.00	

# History for Rutland, VT

Month of July, 2007

## Monthly Summary

	Max:	Avg:	Min:	Sum:
<b>Temperature:</b>				
Max Temperature	89 °F / 31 °C	76 °F / 24 °C	62 °F / 16 °C	
Mean Temperature	76 °F / 24 °C	67 °F / 19 °C	56 °F / 13 °C	
Min Temperature	69 °F / 20 °C	57 °F / 13 °C	48 °F / 8 °C	
<b>Degree Days:</b>				
Heating Degree Days (base 65)	8	1	0	37
Cooling Degree Days (base 65)	12	3	0	97
Growing Degree Days (base 50)	26	17	6	521
<b>Dew Point:</b>				
Dew Point	73 °F / 22 °C	57 °F / 14 °C	43 °F / 6 °C	
<b>Precipitation:</b>				
Precipitation	1.07 in / 2.7 cm	0.12 in / 0.3 cm	0.00 in / 0.0 cm	3.74 in / 9.51 cm
Snowdepth	-	-	-	-
<b>Wind:</b>				
Wind	20 mph / 32 km/h	6 mph / 9 km/h	0 mph / 0 km/h	
Gust Wind	30 mph / 48 km/h	19 mph / 30 km/h	16 mph / 26 km/h	
<b>Sea Level Pressure:</b>				
Sea Level Pressure	30.27 in / 1025 hPa	29.97 in / 1015 hPa	29.61 in / 1003 hPa	



Sunday	Monday	Tuesday	Wednesday	Thursday	Friday	Saturday
<b>1</b>  Actual: 62   51 Precip: 0.00 Average: 80   55 Precip: 0.10	<b>2</b>  Actual: 66   48 Precip: 0.00 Average: 81   55 Precip: 0.05	<b>3</b>  Actual: 73   48 Precip: 0.03 Average: 80   57 Precip: 0.18	<b>4</b>  Actual: 73   51 Precip: 0.17 Average: 81   55 Precip: 0.09	<b>5</b>  Actual: 77   60 Precip: 0.04 Average: 79   57 Precip: 0.15	<b>6</b>  Actual: 73   59 Precip: 0.67 Average: 80   54 Precip: 0.05	<b>7</b>  Actual: 73   53 Precip: 0.00 Average: 82   55 Precip: 0.07
<b>8</b>  Actual: 77   60 Precip: 0.00 Average: 82   56 Precip: 0.06	<b>9</b>  Actual: 86   64 Precip: 0.61 Average: 84   58 Precip: 0.09	<b>10</b>  Actual: 89   64 Precip: 0.00 Average: 83   58 Precip: 0.11	<b>11</b>  Actual: 80   69 Precip: 0.02 Average: 81   55 Precip: 0.12	<b>12</b>  Actual: 73   55 Precip: 0.00 Average: 81   56 Precip: 0.15	<b>13</b>  Actual: 73   53 Precip: 0.01 Average: 81   55 Precip: 0.14	<b>14</b>  Actual: 75   50 Precip: 0.00 Average: 81   58 Precip: 0.10
<b>15</b>  Actual: 77   66 Precip: 0.02 Average: 82   59 Precip: 0.15	<b>16</b>  Actual: 77   53 Precip: 0.00 Average: 83   60 Precip: 0.06	<b>17</b>  Actual: 77   55 Precip: 0.03 Average: 83   58 Precip: 0.21	<b>18</b>  Actual: 66   62 Precip: 1.07 Average: 84   59 Precip: 0.12	<b>19</b>  Actual: 69   62 Precip: 0.46 Average: 84   59 Precip: 0.12	<b>20</b>  Actual: 73   62 Precip: 0.56 Average: 82   60 Precip: 0.05	<b>21</b>  Actual: 75   51 Precip: 0.00 Average: 82   58 Precip: 0.26
<b>22</b>  Actual: 77   48 Precip: 0.00 Average: 82   57 Precip: 0.06	<b>23</b>  Actual: 73   53 Precip: 0.00 Average: 82   57 Precip: 0.15	<b>24</b>  Actual: 75   62 Precip: 0.00 Average: 82   56 Precip: 0.09	<b>25</b>  Actual: 82   55 Precip: 0.00 Average: 83   56 Precip: 0.08	<b>26</b>  Actual: 84   60 Precip: 0.00 Average: 81   58 Precip: 0.05	<b>27</b>  Actual: 86   66 Precip: 0.00 Average: 81   57 Precip: 0.20	<b>28</b>  Actual: 78   64 Precip: 0.05 Average: 80   59 Precip: 0.22
<b>29</b>  Actual: 80   60 Precip: 0.00 Average: 80   57 Precip: 0.20	<b>30</b>  Actual: 82   60 Precip: 0.00 Average: 80   57 Precip: 0.14	<b>31</b>  Actual: 82   57 Precip: 0.00 Average: 81   56 Precip: 0.29				

Month Precipitation - Actual month total: Average month total: 3.91

Calendar Key

Sunny Clear	Sunny Partly	Mostly Sunny Partly	Mostly Sunny Partly Cloudy	Cloudy	Rain	Snow
Hail Flurries	Thunderstorms	Hazy Fog	Sleet	denotes 'chance of'	Unknown	

Actual:	90   58	Condition
Precip:	0.00	High Temp.
Average:	71   53	Lo Temp.
Precip:	0.03	Precip. (in inches)
		Daily Avg. Temp.
		Temps in °F



Daily Observations

2007	Temp (°F)			Dew Point (°F)			Humidity (%)			Sea Level Pressure (in)			Visibility (mi)			Wind (mph)		Gust Speed (mph)	Precip (in)	Events
	high	avg	low	high	avg	low	high	avg	low	high	avg	low	high	avg	low	high	avg	high	sum	
1	62	56	51	52	52	43	100	77	52	30.07	30.00	29.99	10	10	10	10	0	17	0.00	
2	66	57	48	48	47	43	94	68	43	30.19	30.12	30.12	10	10	10	14	3	21	0.00	
3	73	60	48	55	50	43	100	71	35	30.22	30.20	30.12	10	7	0	10	4	16	0.03	
4	73	62	51	57	49	46	88	70	50	30.15	30.14	30.01	10	10	6	15	6	23	0.17	
5	77	68	60	63	57	57	94	80	57	29.92	29.91	29.83	10	10	5	12	8	-	0.04	
6	73	66	59	63	61	55	94	82	61	29.87	29.83	29.81	10	8	2	18	5	30	0.67	Thunderstorm
7	73	63	53	61	55	52	100	82	57	29.88	29.88	29.80	10	8	0	10	4	25	0.00	
8	77	68	60	63	57	57	94	77	57	29.81	29.80	29.73	10	10	9	12	6	-	0.00	
9	86	75	64	73	62	61	94	88	66	29.92	29.87	29.78	10	9	2	17	6	24	0.61	Thunderstorm
10	89	76	64	72	64	63	94	76	49	29.97	29.91	29.87	10	9	3	13	10	-	0.00	
11	80	76	69	72	68	64	88	79	69	29.87	29.86	29.67	10	6	3	14	7	21	0.02	Thunderstorm
12	73	64	55	59	58	52	100	72	47	29.85	29.77	29.76	10	8	0	13	3	16	0.00	
13	73	63	53	61	52	50	94	71	46	29.91	29.87	29.85	10	10	10	18	6	28	0.01	Thunderstorm
14	75	62	50	54	50	46	88	62	38	29.99	29.94	29.86	10	10	5	13	8	20	0.00	
15	77	72	66	63	54	54	88	67	50	29.82	29.81	29.75	10	10	8	14	11	18	0.02	
16	77	65	53	55	52	48	88	66	39	30.00	29.91	29.90	10	10	10	10	4	16	0.00	
17	77	66	55	57	55	52	94	66	44	30.07	30.03	30.01	10	10	8	12	5	16	0.03	
18	66	64	62	63	58	57	100	87	73	30.05	30.04	29.89	10	7	2	12	5	-	1.07	
19	69	66	62	64	61	61	100	94	83	29.87	29.86	29.65	10	6	1	14	2	16	0.46	
20	73	68	62	63	63	55	100	81	53	29.75	29.64	29.61	10	7	0	20	1	29	0.56	
21	75	63	51	57	55	46	100	71	36	30.07	29.94	29.93	10	8	0	15	1	22	0.00	
22	77	62	48	55	50	46	93	65	34	30.25	30.17	30.17	10	10	7	9	6	-	0.00	
23	73	63	53	59	54	48	88	76	47	30.27	30.27	30.12	10	10	9	15	6	25	0.00	
24	75	68	62	63	62	59	88	84	65	30.08	30.04	30.03	10	10	10	13	10	20	0.00	
25	82	68	55	64	57	52	94	71	45	30.20	30.15	30.14	10	10	3	8	5	-	0.00	
26	84	72	60	66	61	55	88	70	48	30.21	30.18	30.06	10	9	3	10	9	16	0.00	
27	86	76	66	68	64	63	88	70	51	30.04	30.04	29.85	10	8	5	15	7	21	0.00	
28	78	71	64	66	64	61	94	87	61	29.91	29.89	29.85	10	8	5	9	5	-	0.05	
29	80	70	60	64	61	57	94	75	48	30.00	29.92	29.92	10	8	3	10	6	-	0.00	
30	82	71	60	64	61	57	94	70	48	30.00	29.99	29.93	10	7	0	9	7	-	0.00	
31	82	70	57	63	61	55	94	70	48	30.01	29.98	29.92	10	9	1	9	6	-	0.00	

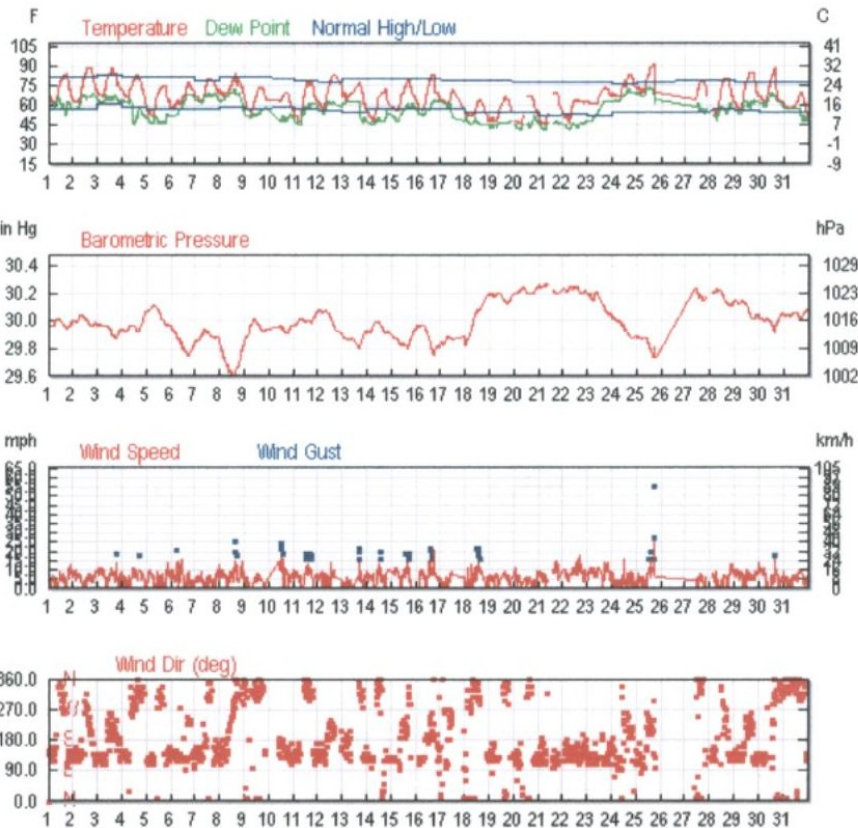
Comma Delimited File

# History for Rutland, VT

Month of August, 2007

## Monthly Summary

	Max:	Avg:	Min:	Sum:
<b>Temperature:</b>				
Max Temperature	91 °F / 32 °C	77 °F / 24 °C	64 °F / 17 °C	
Mean Temperature	80 °F / 26 °C	67 °F / 19 °C	55 °F / 12 °C	
Min Temperature	69 °F / 20 °C	56 °F / 13 °C	44 °F / 6 °C	
<b>Degree Days:</b>				
Heating Degree Days (base 65)	10	2	0	63
Cooling Degree Days (base 65)	15	4	0	119
Growing Degree Days (base 50)	30	17	5	497
<b>Dew Point:</b>				
Dew Point	73 °F / 22 °C	55 °F / 12 °C	41 °F / 5 °C	
<b>Precipitation:</b>				
Precipitation	0.46 in / 1.2 cm	0.05 in / 0.1 cm	0.00 in / 0.0 cm	0.74 in / 1.89 cm
Snowdepth	-	-	-	-
<b>Wind:</b>				
Wind	25 mph / 40 km/h	6 mph / 10 km/h	0 mph / 0 km/h	
Gust Wind	55 mph / 89 km/h	19 mph / 30 km/h	16 mph / 26 km/h	
<b>Sea Level Pressure:</b>				
Sea Level Pressure	30.27 in / 1025 hPa	30.01 in / 1016 hPa	29.61 in / 1003 hPa	



« Previous Month	« 2006	August 2007					2008 »	Next Month »
Sunday	Monday	Tuesday	Wednesday	Thursday	Friday	Saturday		
			1 Actual: 84   62 Precip: 0.00 Average: 81   58 Precip: 0.17	2 Actual: 87   62 Precip: 0.00 Average: 82   58 Precip: 0.18	3 Actual: 87   66 Precip: 0.00 Average: 83   61 Precip: 0.08	4 Actual: 82   64 Precip: 0.00 Average: 82   59 Precip: 0.19		
5 Actual: 75   51 Precip: 0.00 Average: 82   58 Precip: 0.17	6 Actual: 77   57 Precip: 0.09 Average: 81   57 Precip: 0.14	7 Actual: 80   64 Precip: 0.00 Average: 79   58 Precip: 0.18	8 Actual: 84   66 Precip: 0.46 Average: 82   59 Precip: 0.10	9 Actual: 73   53 Precip: 0.00 Average: 82   58 Precip: 0.13	10 Actual: 69   55 Precip: 0.00 Average: 80   59 Precip: 0.21	11 Actual: 77   48 Precip: 0.00 Average: 79   58 Precip: 0.17		
12 Actual: 82   57 Precip: 0.00 Average: 77   56 Precip: 0.16	13 Actual: 77   55 Precip: 0.00 Average: 80   55 Precip: 0.11	14 Actual: 71   48 Precip: 0.00 Average: 80   57 Precip: 0.11	15 Actual: 78   55 Precip: 0.00 Average: 80   57 Precip: 0.12	16 Actual: 82   55 Precip: 0.00 Average: 80   57 Precip: 0.05	17 Actual: 71   53 Precip: 0.01 Average: 79   57 Precip: 0.17	18 Actual: 64   48 Precip: 0.00 Average: 79   55 Precip: 0.06		
19 Actual: 66   48 Precip: 0.00 Average: 79   54 Precip: 0.07	20 Actual: 66   46 Precip: 0.00 Average: 77   54 Precip: 0.09	21 Actual: 69   44 Precip: 0.00 Average: 77   52 Precip: 0.04	22 Actual: 64   46 Precip: 0.00 Average: 77   53 Precip: 0.12	23 Actual: 73   60 Precip: 0.00 Average: 77   52 Precip: 0.14	24 Actual: 82   66 Precip: 0.15 Average: 76   54 Precip: 0.09	25 Actual: 91   69 Precip: 0.00 Average: 77   54 Precip: 0.10		
26 No data Actual: -   - Precip: - Average: -   - Precip: -	27 Actual: 77   64 Precip: 0.00 Average: 79   55 Precip: 0.19	28 Actual: 80   53 Precip: 0.00 Average: 79   57 Precip: 0.24	29 Actual: 84   57 Precip: 0.00 Average: 77   56 Precip: 0.09	30 Actual: 87   62 Precip: 0.03 Average: 78   54 Precip: 0.12	31 Actual: 69   57 Precip: 0.00 Average: 77   54 Precip: 0.12			

Month Precipitation - Actual month total: Average month total: 3.92

Calendar Key

	Sunny Clear		Mostly Cloudy Partly Sunny		Mostly Sunny Partly		Cloudy		Rain		Snow		
	Hail Flurries		Thunderstorms		Cloudy		Hazy Fog		Sleet		?? denotes 'chance'		Unknown

Actual:	90   58	Data Category
Precip:	0.00	Condition
Average:	71   53	High Temp.
Precip:	0.03	Lo Temp.
		Precip. (in inches)
		Daily Avg. Temp.
		Temps in °F
		-60 -30 0 30 60 90 120

2007	Temp (°F)			Dew Point (°F)			Humidity (%)			Sea Level Pressure (in)			Visibility (mi)			Wind (mph)		Gust Speed (mph)	Precip (in)	Events	
August	high	avg	low	high	avg	low	high	avg	low	high	avg	low	high	avg	low	high	avg	high	sum		
1	84	73	62	66	64	52	94	67	35	30.01	29.97	29.94	10	8	0	9	2	-	0.00		
2	87	74	62	68	57	57	94	70	49	30.04	30.00	29.98	10	10	9	10	8	-	0.00		
3	87	76	66	68	64	63	88	69	46	29.98	29.98	29.89	10	10	8	12	10	-	0.00		
4	82	73	64	64	63	45	88	62	30	29.97	29.94	29.92	10	7	2	12	7	18	0.00		
5	75	63	51	52	50	46	82	61	36	30.12	30.07	30.00	10	10	10	10	3	16	0.00		
6	77	67	57	68	52	52	88	78	68	29.96	29.95	29.75	10	10	7	16	8	21	0.09		
7	80	72	64	70	64	61	100	82	61	29.94	29.86	29.85	10	6	0	9	4	-	0.00		
8	84	75	66	72	63	63	94	82	62	29.84	29.76	29.61	10	8	3	15	9	25	0.46		
9	73	63	53	57	53	50	88	72	50	30.02	29.89	29.85	10	10	10	8	6	-	0.00		
10	69	62	55	54	48	48	88	62	46	29.97	29.95	29.91	10	10	10	20	13	24	0.00		
11	77	62	48	61	48	45	88	74	50	30.02	29.96	29.96	10	10	10	13	6	18	0.00		
12	82	70	57	63	57	54	94	70	48	30.08	30.07	29.91	10	10	10	14	6	-	0.00		
13	77	67	55	63	61	46	94	71	41	29.92	29.89	29.80	10	10	8	15	1	22	0.00		
14	71	60	48	50	47	45	87	66	43	29.99	29.91	29.91	10	10	9	13	7	20	0.00		
15	78	66	55	61	51	48	83	71	51	29.93	29.89	29.80	10	10	9	14	9	21	0.00		
16	82	68	55	64	57	52	94	69	44	29.97	29.95	29.75	10	10	3	21	0	28	0.00	Thunderstorm	
17	71	63	53	63	63	48	100	86	46	29.89	29.84	29.83	10	5	0	9	3	-	0.01		
18	64	56	48	50	49	43	88	73	49	30.18	29.93	29.83	10	9	0	15	2	22	0.00		
19	66	57	48	48	44	43	87	70	49	30.20	30.19	30.12	10	10	10	9	5	-	0.00		
20	66	56	46	52	45	41	87	69	43	30.25	30.20	30.19	10	10	2	12	8	-	0.00		
21	69	56	44	48	45	41	93	72	43	30.27	30.26	30.19	10	9	0	15	9	16	0.00		
22	64	55	46	48	45	41	82	63	45	30.25	30.23	30.19	10	10	10	17	8	21	0.00		
23	73	66	60	63	48	48	78	64	59	30.21	30.20	30.05	10	10	9	14	7	-	0.00		
24	82	74	66	72	63	63	94	85	65	30.03	30.02	29.89	10	8	3	16	4	20	0.15	Thunderstorm	
25	91	80	69	73	68	66	88	72	46	29.89	29.88	29.73	10	5	1	25	3	55	0.00		
26	-	-	-	-	-	-	-	-	-	-	-	-	-	-	-	-	-	-	-	-	
27	77	70	64	61	60	54	83	56	44	30.23	30.21	30.15	10	10	10	9	4	-	0.00		
28	80	66	53	61	52	48	94	62	39	30.23	30.20	30.11	10	10	10	13	7	-	0.00		
29	84	70	57	63	55	54	94	68	40	30.15	30.15	30.02	10	10	10	10	10	-	0.00		
30	87	74	62	70	61	59	94	74	46	30.03	30.03	29.91	10	8	2	17	11	26	0.03	Thunderstorm	
31	69	63	57	59	59	52	100	89	53	30.06	30.04	30.02	10	5	0	10	4	16	0.00		