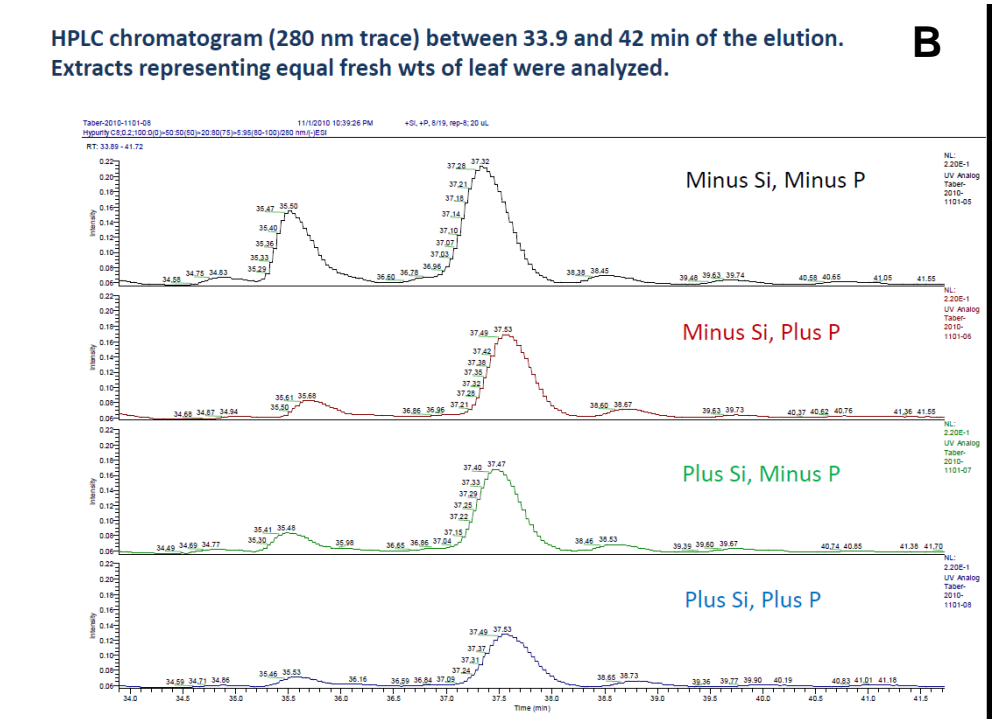
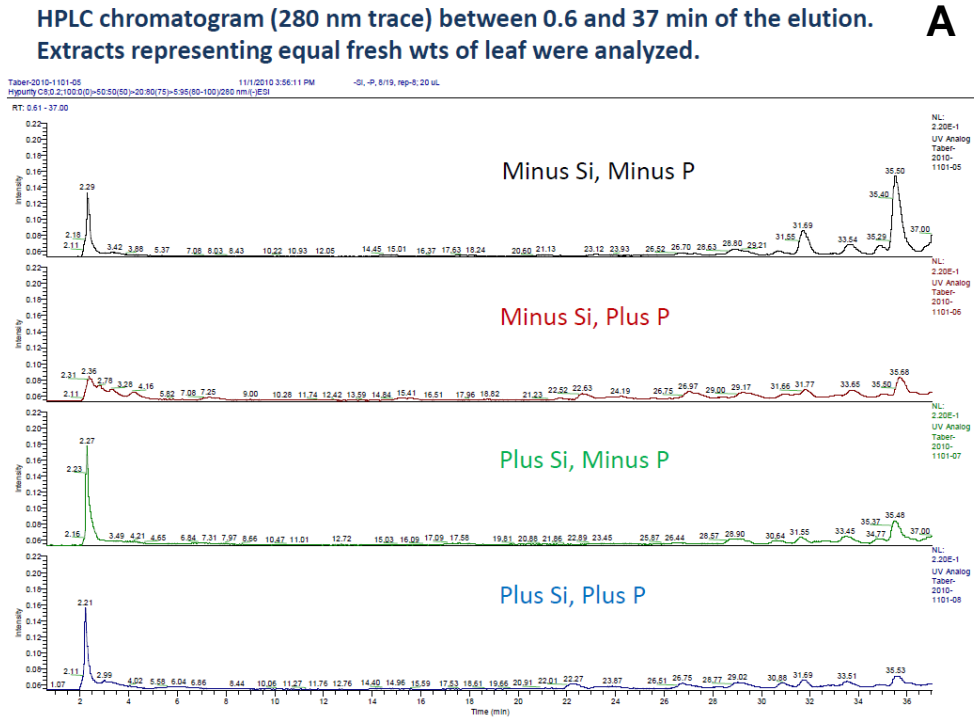


Figure 3 A-C. HPLC analysis of cucumber leaf tissue following soil incorporation of Si (Ca_2SiO_4). P = pathogen (*Colletotrichum orbiculare*)



HPLC chromatogram (280 nm trace) between 42 and 80 min of the elution.
 Extracts representing equal fresh wts of leaf were analyzed.

C

File: 2010-1101-05 11/10/10 10:39:26 PM +DI, +P, 819, rep-0, 20 uL
 Agilent C8.2 100 Å (50-80 Å) (50-20 Å) (75 Å) 5 µm (80-100) (280 nm) (25 µm)

