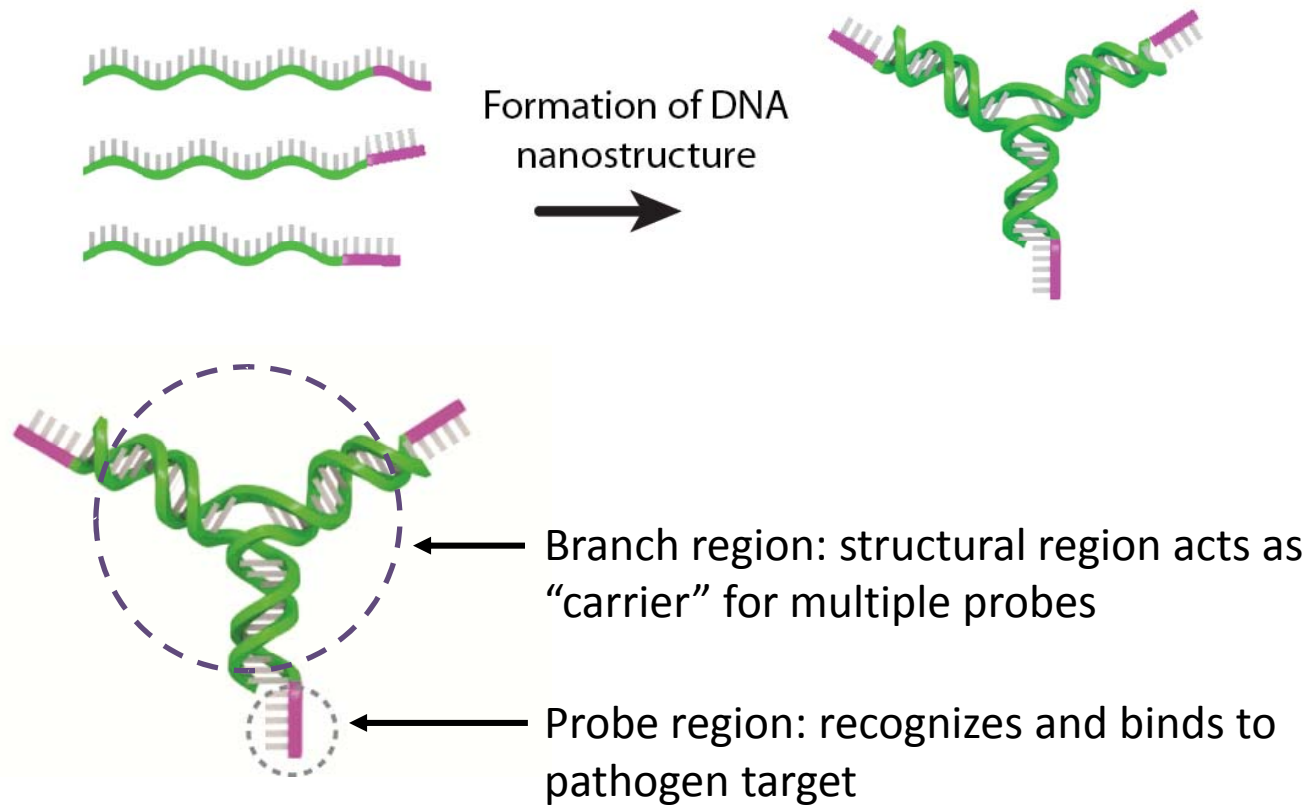
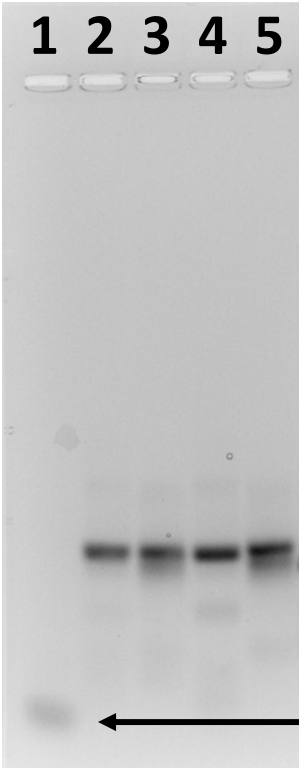


Multiple single-stranded DNA are used to assemble branched DNA nanostructures. This process requires careful sequence design of the branched junction (green region).



Gel electrophoresis indicates that Y-DNA structures with CMV probes were formed with good purity and yield.



Lane	Sample	Schematic representation
1	ssYDNA oligo (marker)	
2	YDNA 1	
3	YDNA 2	
4	YDNA 1	
5	YDNA 2	