

Fig. 5. Percentage of root-knot nematode second stage juvenile remained alive after incubated in different concentration of sunn hemp leachate collected from 1-, 2-, 3- or 4-month old whole plant tissues.

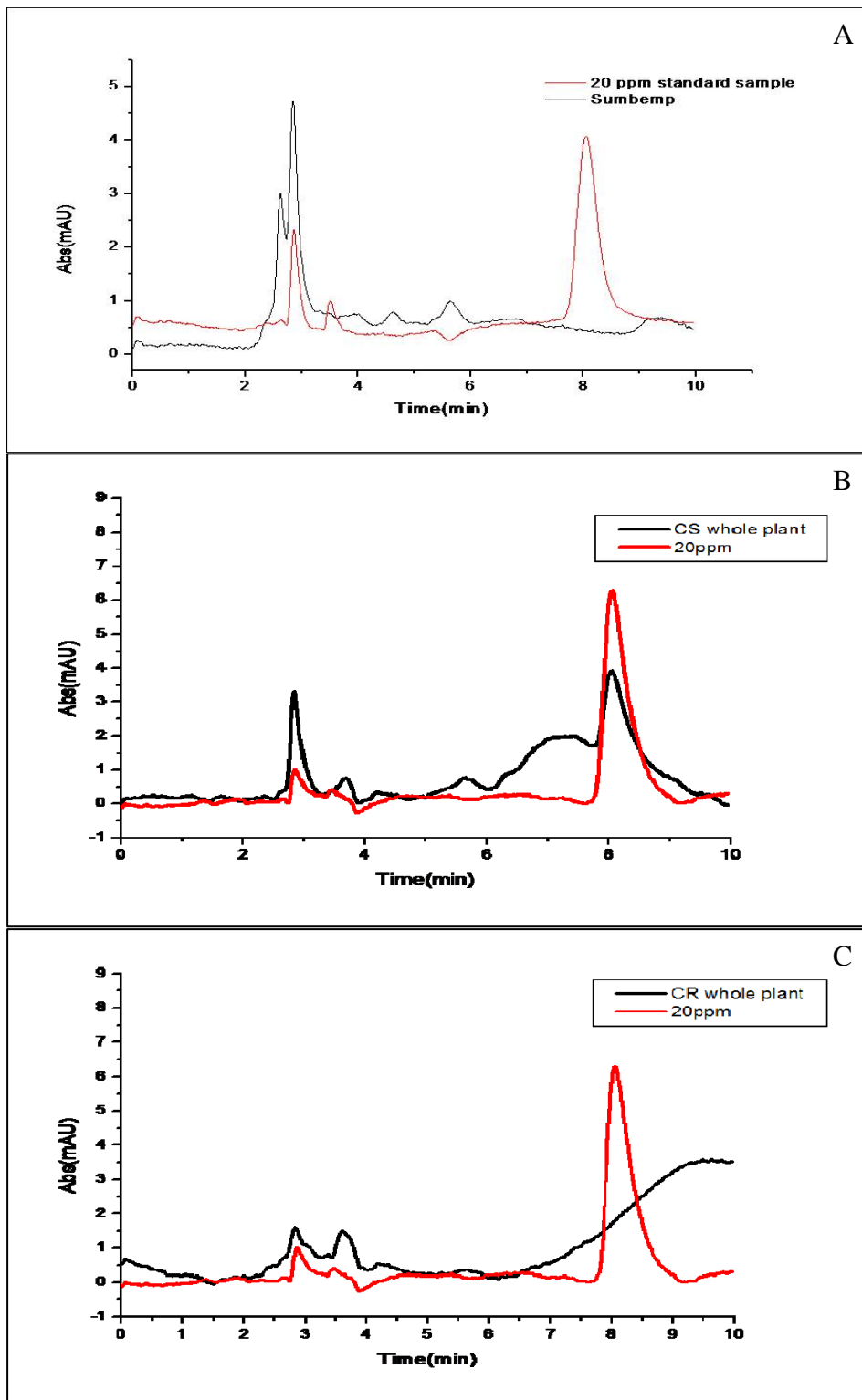


Fig. 6. HPLC chromatograms for whole plant tissues of A) *Crotalaria juncea*, B) *C. spectabilis*, and C) *C. retusa* as compared to 20 ppm of monocrotaline standard. Only B has peak at 8 min similar to that of monocrotaline. *Crotalaria juncea* produced relatively high concentration of a peak at < 3 min.