



Remote Setting to Create Spat On Shell

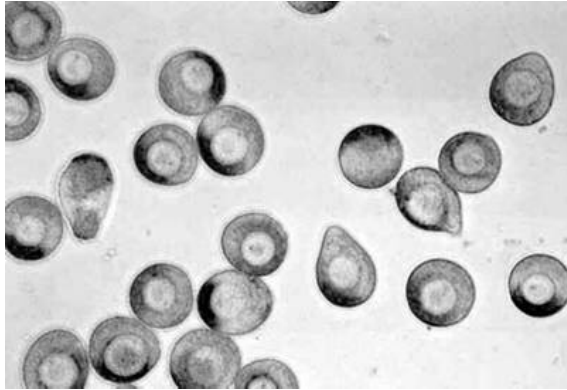
“Natural” Oyster Spawn



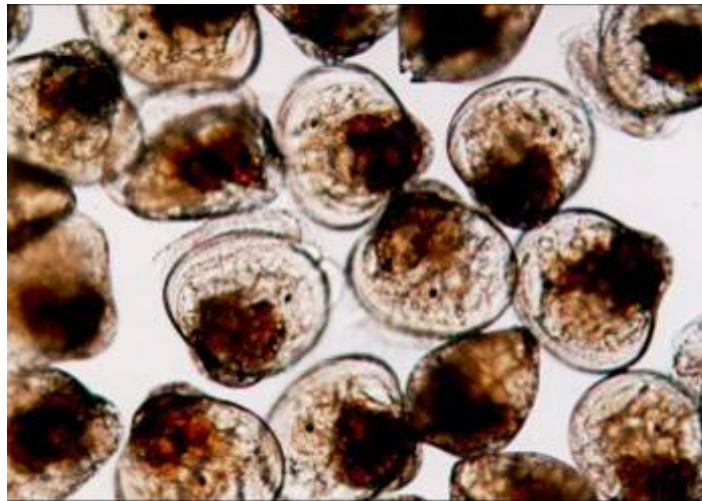
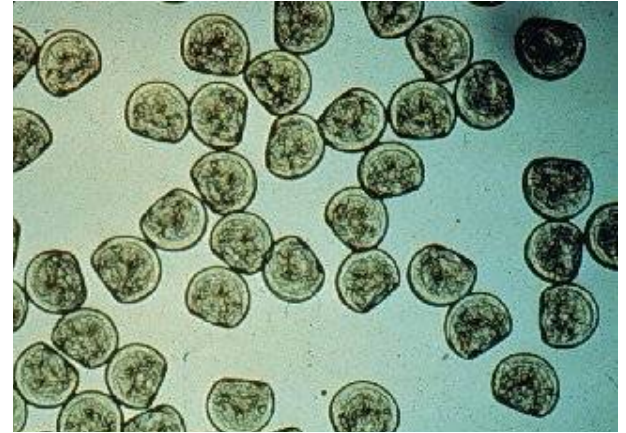
Oyster Strip Spawn



Oyster Eggs

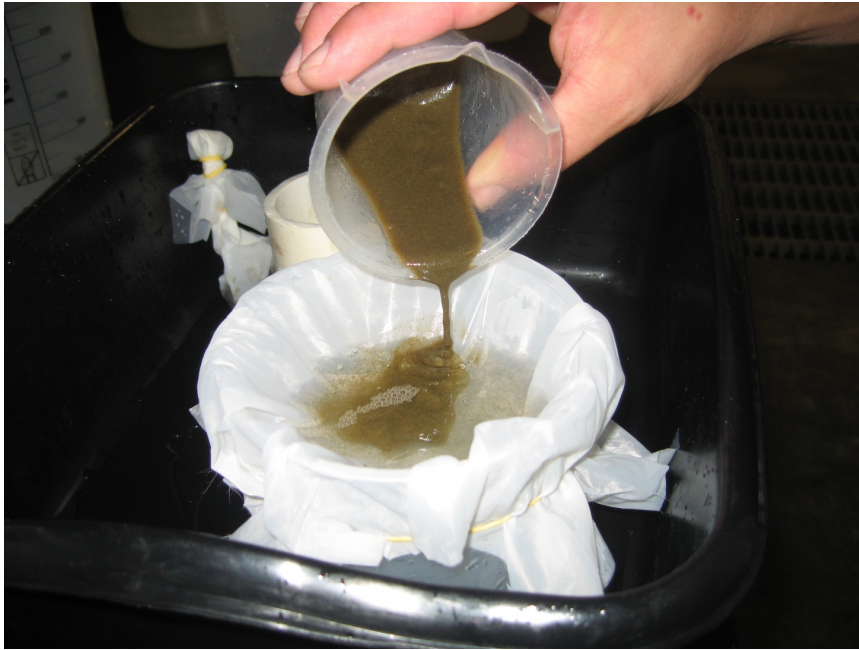


Oyster Larvae



Eyed Larvae

Pouring Larvae into Packing Material for Storage and Transport



Mixing Larvae in Bucket
with Water from Tank



Installing Filter Bags on Tanks Filled With Clean Shell



Adding Larvae to Tank



Dumping Shell
from Cages on
Deck of Boat



Shell Planting



Measurement of Spat after three months of growth

