

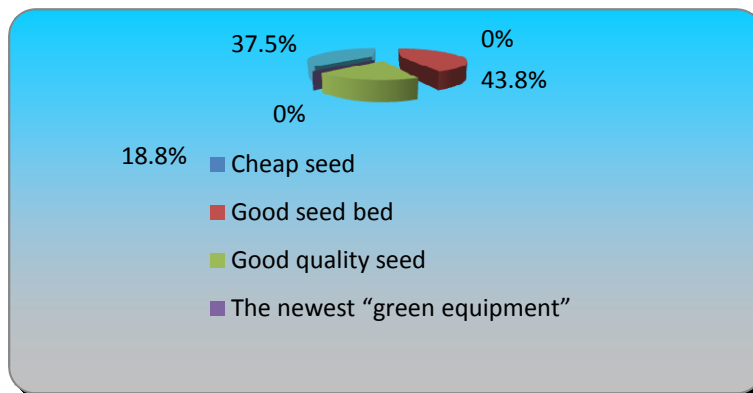
**Pasture Management Professional Development Workshop**  
**Univ. of Idaho Nancy M. Cummings Research, Extension, and Education Center, August 21-23, 2012**  
**Post-test Graphical Results by Question**

Session Name: New Session 8-23-2012 12-57 PM

Created: 8/27/2012 1:29 PM

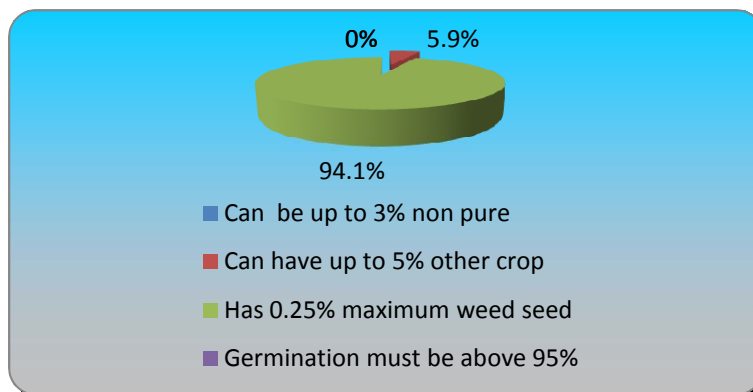
**1.) Which are essential to stand establishment? (multiple choice)**

	Responses	
Cheap seed	0	0%
<i>Good seed bed</i>	<b>7</b>	<b>43.75%</b>
<i>Good quality seed</i>	<b>3</b>	<b>18.75%</b>
The newest "green equipment"	0	0%
<i>Good seedling management</i>	<b>6</b>	<b>37.50%</b>
<b>Totals</b>	<b>16</b>	<b>100%</b>



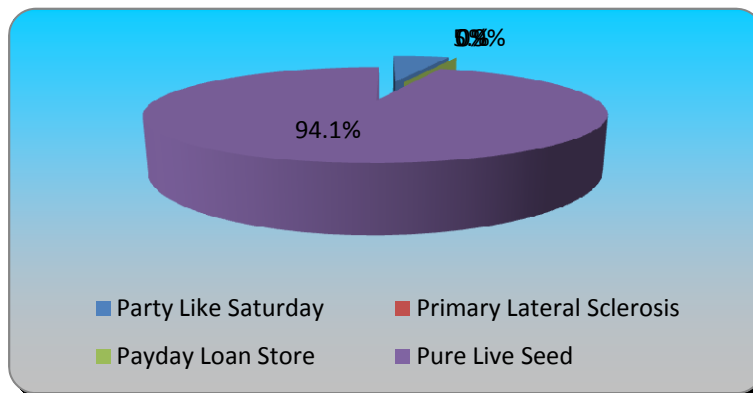
**2.) Certified seed . . . (multiple choice)**

	Responses	
Can be up to 3% non pure	0	0%
Can have up to 5% other crop	1	5.88%
<i>Has 0.25% maximum weed seed</i>	<b>16</b>	<b>94.12%</b>
Germination must be above 95%	0	0%
<b>Totals</b>	<b>17</b>	<b>100%</b>



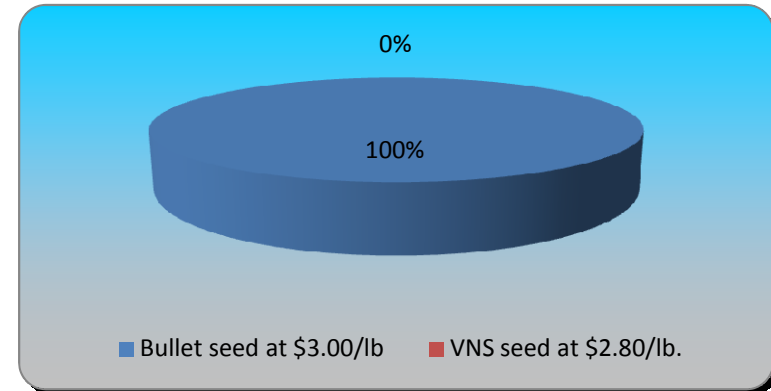
**3.) PLS is an acronym for: (multiple choice)**

	Responses	
Party Like Saturday	1	5.88%
<i>Primary Lateral Sclerosis</i>	<b>0</b>	<b>0%</b>
<i>Payday Loan Store</i>	<b>0</b>	<b>0%</b>
<i>Pure Live Seed</i>	<b>16</b>	<b>94.12%</b>
<b>Totals</b>	<b>17</b>	<b>100%</b>



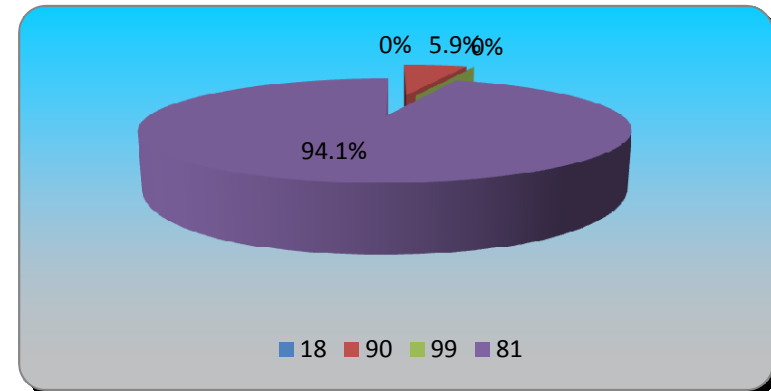
#### 4.) What is the best buy? (multiple choice)

	Responses	
<i>Bullet seed at \$3.00/lb</i>	17	100%
VNS seed at \$2.80/lb.	0	0%
<b>Totals</b>	<b>17</b>	<b>100%</b>



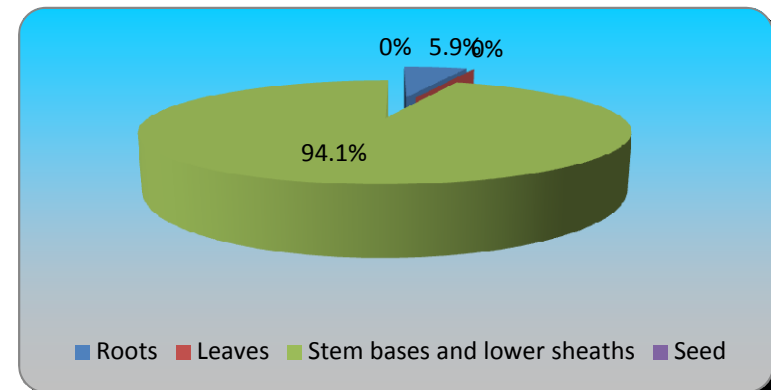
#### 5.) If germination is 90% and purity is 90%, what is the PLS Index? (multiple choice)

	Responses	
18	0	0%
90	1	5.88%
99	0	0%
<i>81</i>	16	94.12%
<b>Totals</b>	<b>17</b>	<b>100%</b>



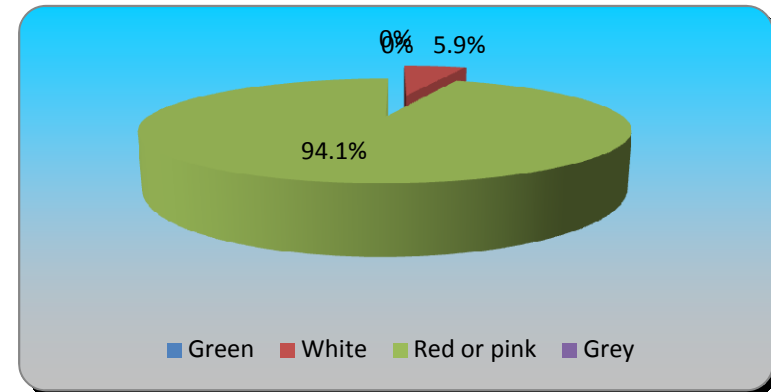
#### 6.) Where do cool-season grasses store the most energy for respiration during dormancy and regrowth? (multiple choice)

	Responses	
Roots	1	5.88%
Leaves	0	0%
<i>Stem bases and lower sheaths</i>	16	94.12%
Seed	0	0%
<b>Totals</b>	<b>17</b>	<b>100%</b>



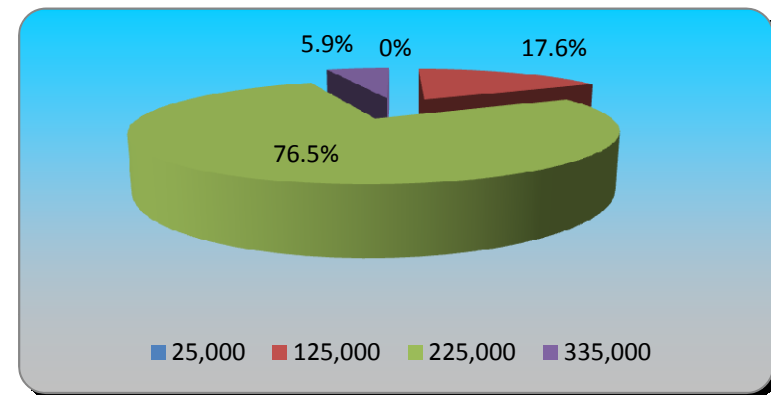
7.) Bacteria fix nitrogen in legumes root nodules. Nodules are (color) when actively fixing N? (multiple choice)

	Responses	
Green	0	0%
White	1	5.88%
<b>Red or pink</b>	<b>16</b>	<b>94.12%</b>
Grey	0	0%
<b>Totals</b>	<b>17</b>	<b>100%</b>



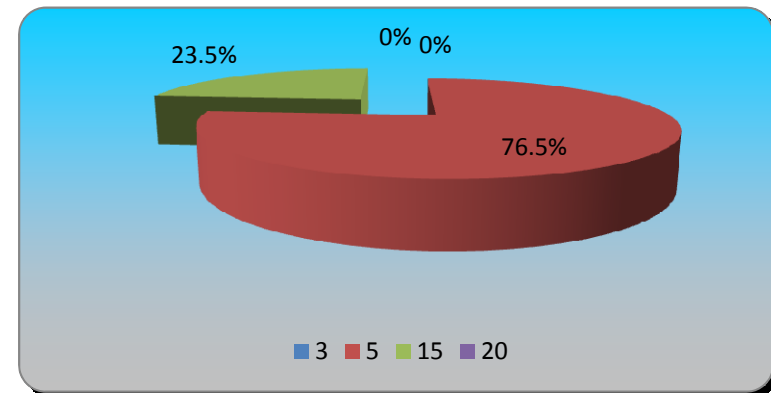
8.) How many alfalfa seed in 1 lb? (multiple choice)

	Responses	
25,000	0	0%
125,000	3	17.65%
<b>225,000</b>	<b>13</b>	<b>76.47%</b>
335,000	1	5.88%
<b>Totals</b>	<b>17</b>	<b>100%</b>



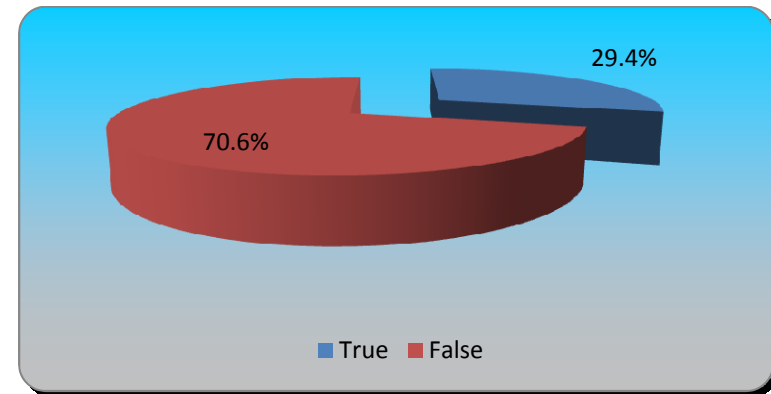
9.) At 1 lb/ac, how many seeds in 1 square foot? (multiple choice)

	Responses	
3	0	0%
<b>5</b>	<b>13</b>	<b>76.47%</b>
15	4	23.53%
20	0	0%
<b>Totals</b>	<b>17</b>	<b>100%</b>



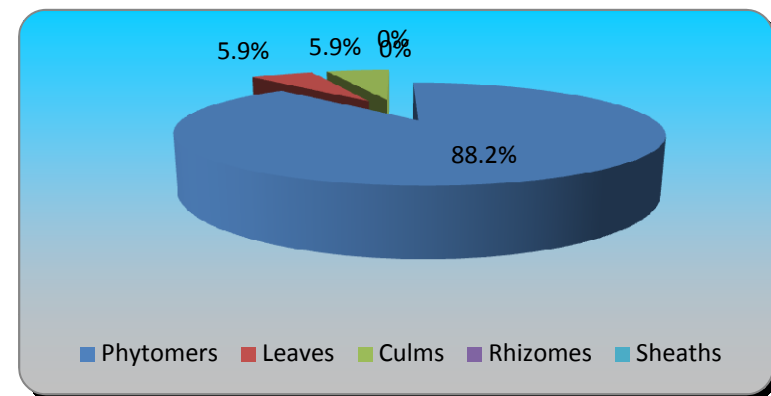
10.) Forage plants are very photosynthesis efficient (>50%)?  
(multiple choice)

	Responses	
True	5	29.41%
<i>False</i>	<i>12</i>	<i>70.59%</i>
<b>Totals</b>	<b>17</b>	<b>100%</b>



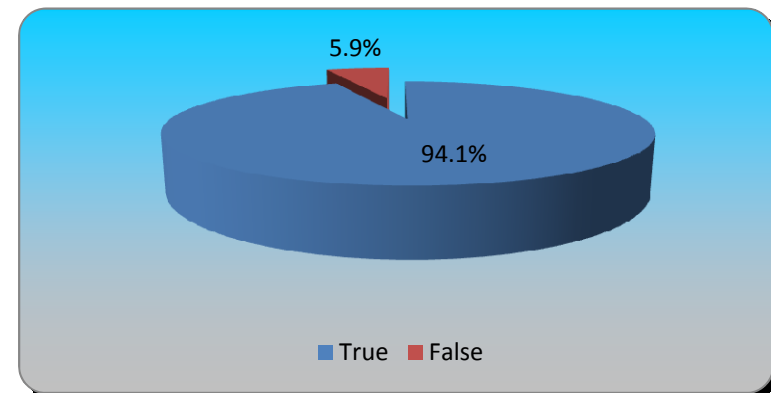
11.) The accumulation of successive \_\_\_\_\_ differentiated from a single apical meristem defines the tiller. (multiple choice)

	Responses	
<i>Phytomers</i>	<i>15</i>	<i>88.24%</i>
Leaves	1	5.88%
Culms	1	5.88%
Rhizomes	0	0%
Sheaths	0	0%
<b>Totals</b>	<b>17</b>	<b>100%</b>



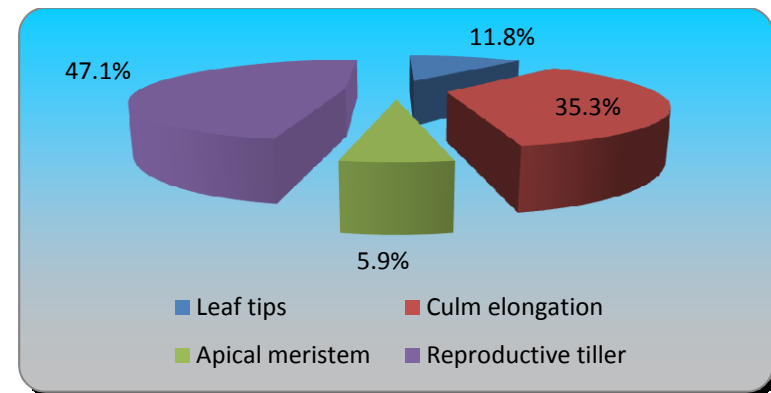
12.) In culmed vegetative tillers, the apical meristem is elevated above the soil surface by internode elongation while in a vegetative condition? (multiple choice)

	Responses	
<i>True</i>	<i>16</i>	<i>94.12%</i>
False	1	5.88%
<b>Totals</b>	<b>17</b>	<b>100%</b>



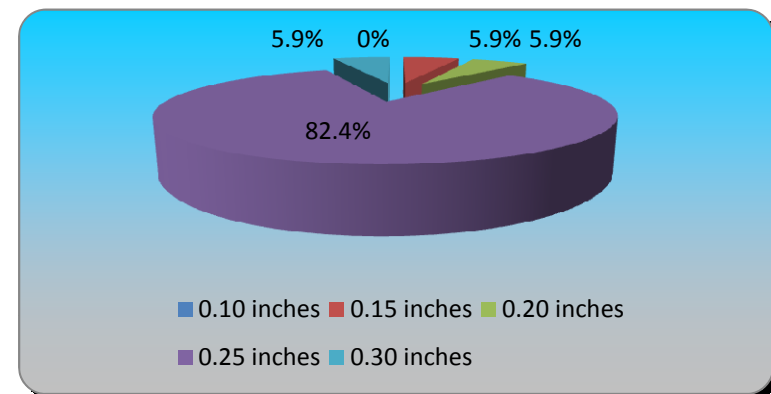
13.) \_\_\_\_\_ originates from the activity of intercalary meristems located at the base of the several uppermost internodes. (multiple choice)

	Responses	
Leaf tips	2	11.76%
<i>Culm elongation</i>	<b>6</b>	<b>35.29%</b>
Apical meristem	1	5.88%
Reproductive tiller	8	47.06%
<b>Totals</b>	<b>17</b>	<b>100%</b>



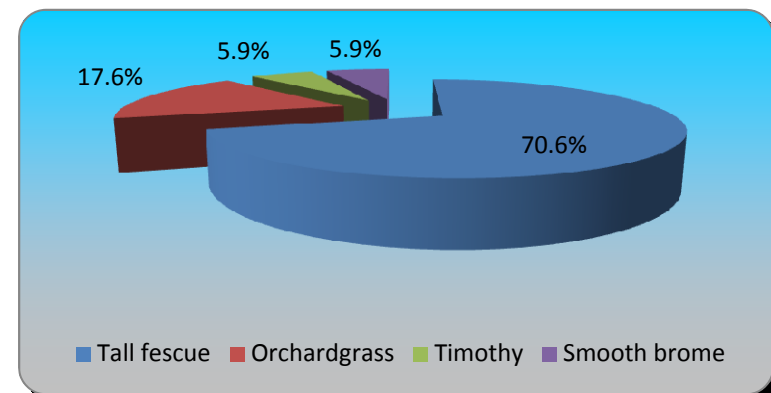
14.) Summer ET from irrigated grass-legume pastures in the semi-arid west averages about \_\_\_\_\_ inches per day? (multiple choice)

	Responses	
0.10 inches	0	0%
0.15 inches	1	5.88%
0.20 inches	1	5.88%
<i>0.25 inches</i>	<b>14</b>	<b>82.35%</b>
0.30 inches	1	5.88%
<b>Totals</b>	<b>17</b>	<b>100%</b>



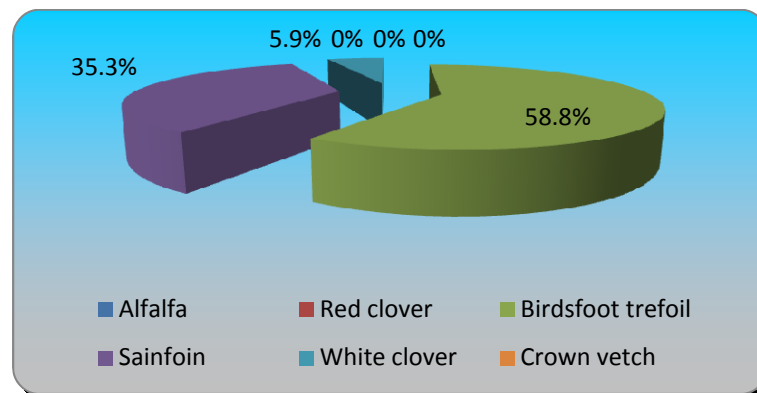
15.) Name 2 grasses that act as a host for root lesion nematode? (multiple choice)

	Responses	
<i>Tall fescue</i>	<b>12</b>	<b>70.59%</b>
Orchardgrass	3	17.65%
<i>Timothy</i>	<b>1</b>	<b>5.88%</b>
Smooth brome	1	5.88%
<b>Totals</b>	<b>17</b>	<b>100%</b>



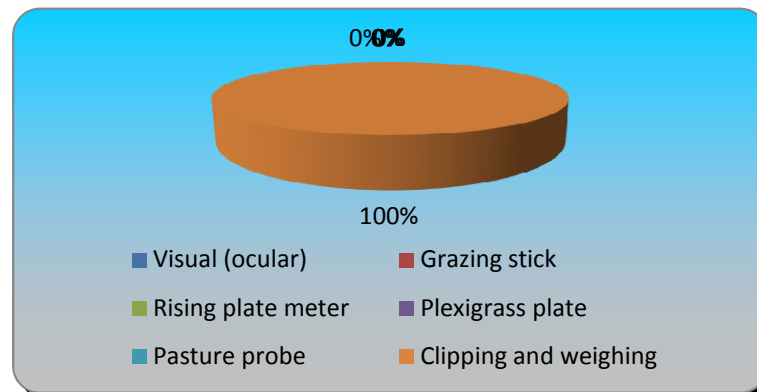
**16.) Name 1 of 3 correct legumes that are non-bloating?  
(multiple choice)**

	Responses	
Alfalfa	0	0%
Red clover	0	0%
<i>Birdsfoot trefoil</i>	10	58.82%
<i>Sainfoin</i>	6	35.29%
White clover	1	5.88%
<i>Crown vetch</i>	0	0%
<b>Totals</b>	<b>17</b>	<b>100%</b>



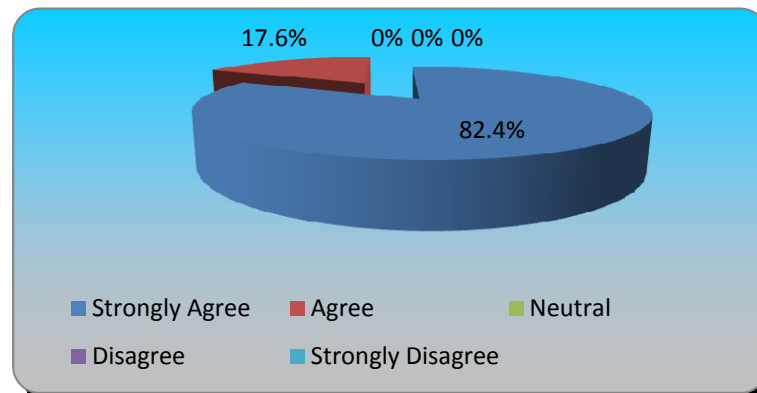
**17.) Which method to estimate forage production is most accurate? (multiple choice)**

	Responses	
Visual (ocular)	0	0%
Grazing stick	0	0%
Rising plate meter	0	0%
Plexigrass plate	0	0%
Pasture probe	0	0%
<i>Clipping and weighing</i>	16	100%
<b>Totals</b>	<b>16</b>	<b>100%</b>



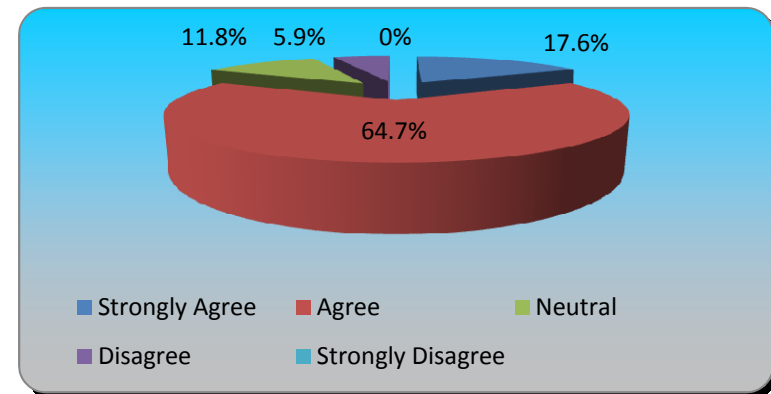
**18.) Did the workshop meet your expectations? (multiple choice)**

	Responses	
Strongly Agree	14	82.35%
Agree	3	17.65%
Neutral	0	0%
Disagree	0	0%
Strongly Disagree	0	0%
<b>Totals</b>	<b>17</b>	<b>100%</b>



**19.) Was there a good balance of lectures and hands-on exercises? (multiple choice)**

	Responses	
Strongly Agree	3	17.65%
Agree	11	64.71%
Neutral	2	11.76%
Disagree	1	5.88%
Strongly Disagree	0	0%
<b>Totals</b>	<b>17</b>	<b>100%</b>



**20.) Did you gain understanding of critical concepts and principles? (multiple choice)**

	Responses	
Strongly Agree	13	76.47%
Agree	4	23.53%
Neutral	0	0%
Disagree	0	0%
Strongly Disagree	0	0%
<b>Totals</b>	<b>17</b>	<b>100%</b>

