

**Fig. 1:** Tree cage for winter sampling



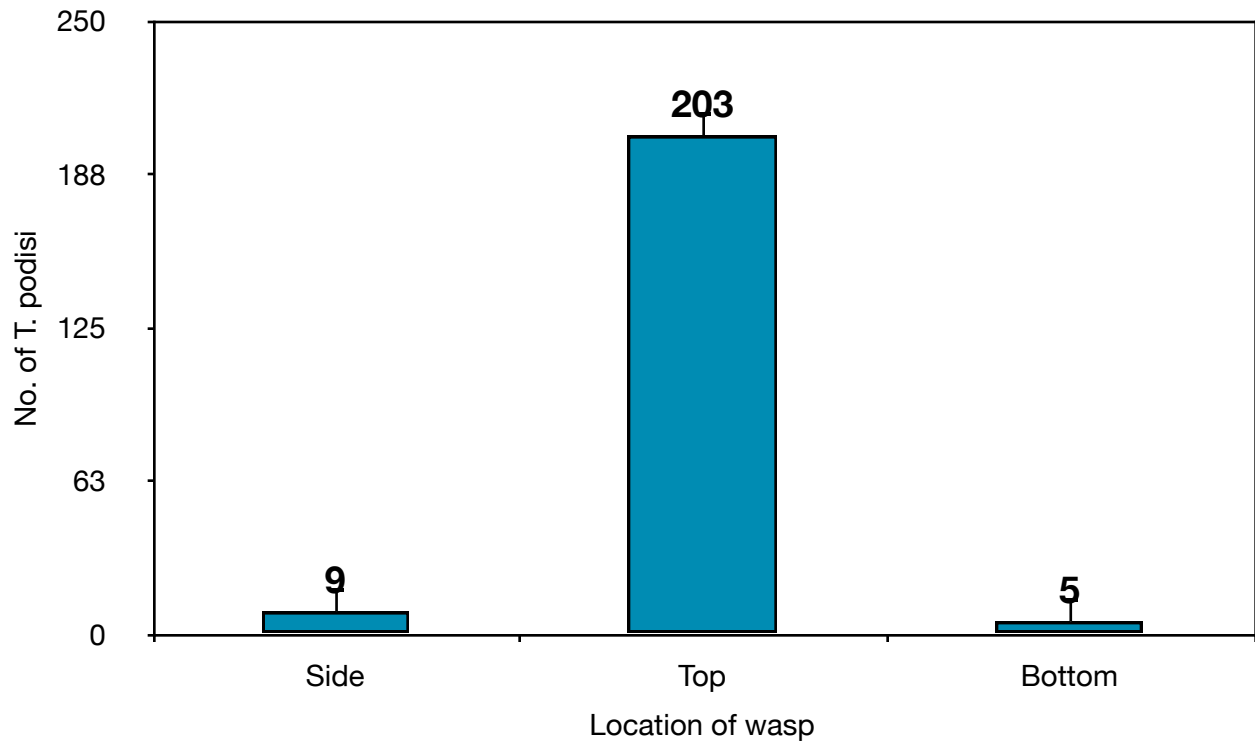
**Fig. 2:** Leaf litter sampling in greenhouse



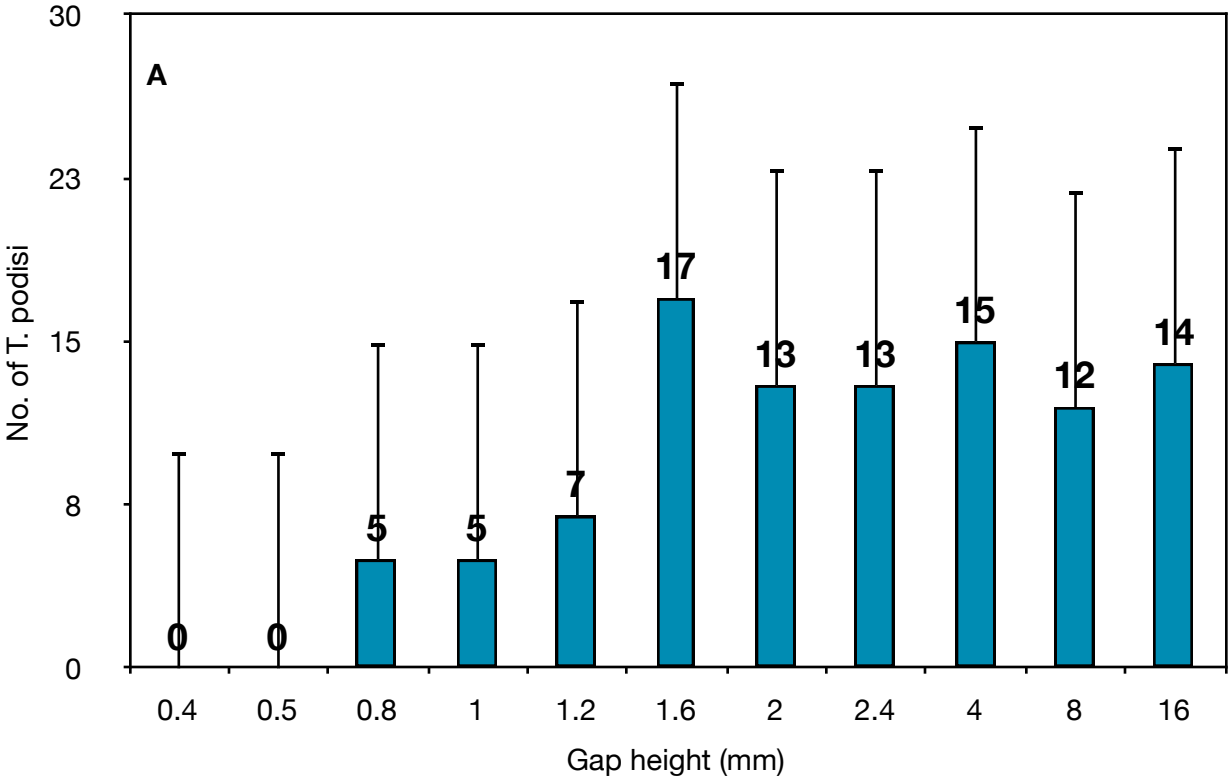
**Table 1.** Temperature-photoperiod regimen for imposing overwintering conditions on *Telenomus podisi*.

<b>Day</b>	<b>Temperature (°C)</b>	<b>Photoperiod</b>
1	25	14:10
2	20	12:12
3	15	10:14
4	10	10:14
5	5	10:14

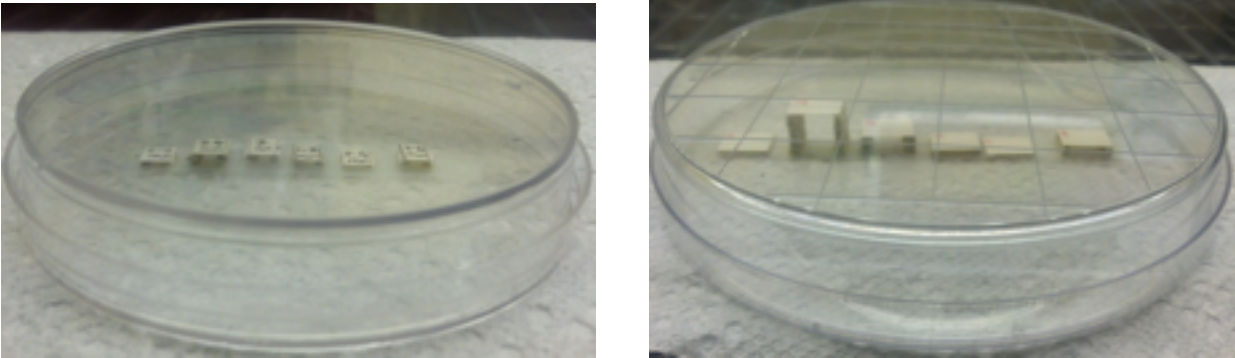
**Fig 3.** Preference of *Telenomus podisi* females (2-day old; mated; starved) for side, top or bottom of a refuge when exposed to overwintering conditions (5°C; 10h photophase; 75% R.H.). (N = 217; No. of trials = 17)



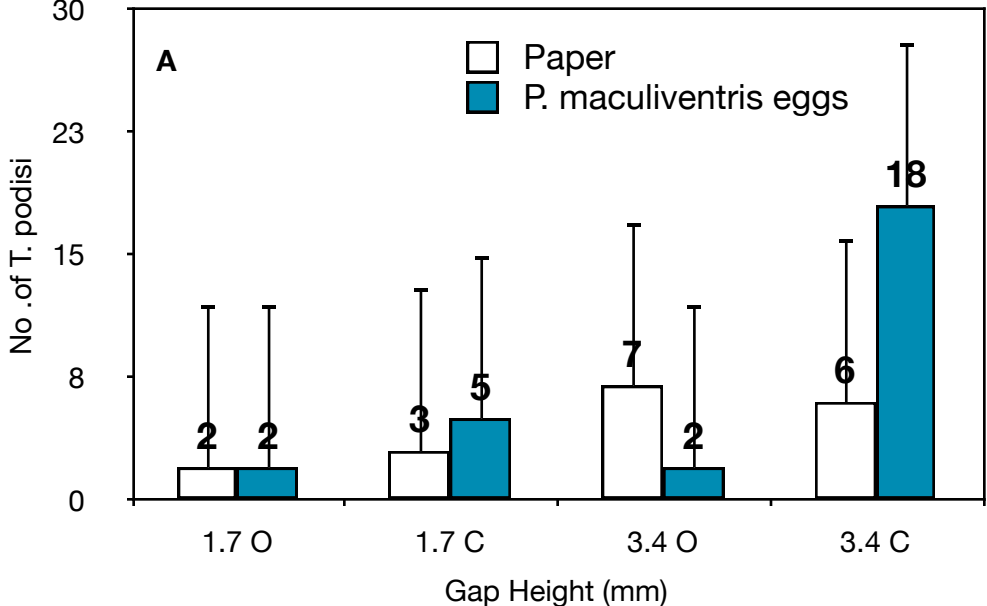
**Fig. 4. A.** Vertical gap preference by *Telenomus podisi* females (2-day old; mated; starved) for refuge when exposed to overwintering conditions (5°C; 10h photophase; 75% R.H.). Choice consists of two walls of a range of heights (0.4, 0.5, 0.8, 1.0, 1.2, 1.6, 2.0, 2.4, 4.0, 8.0, 16.0 mm) separated by 1cm and constructed of paper with paper top. (N =101). **B.** Picture of experimental arena.



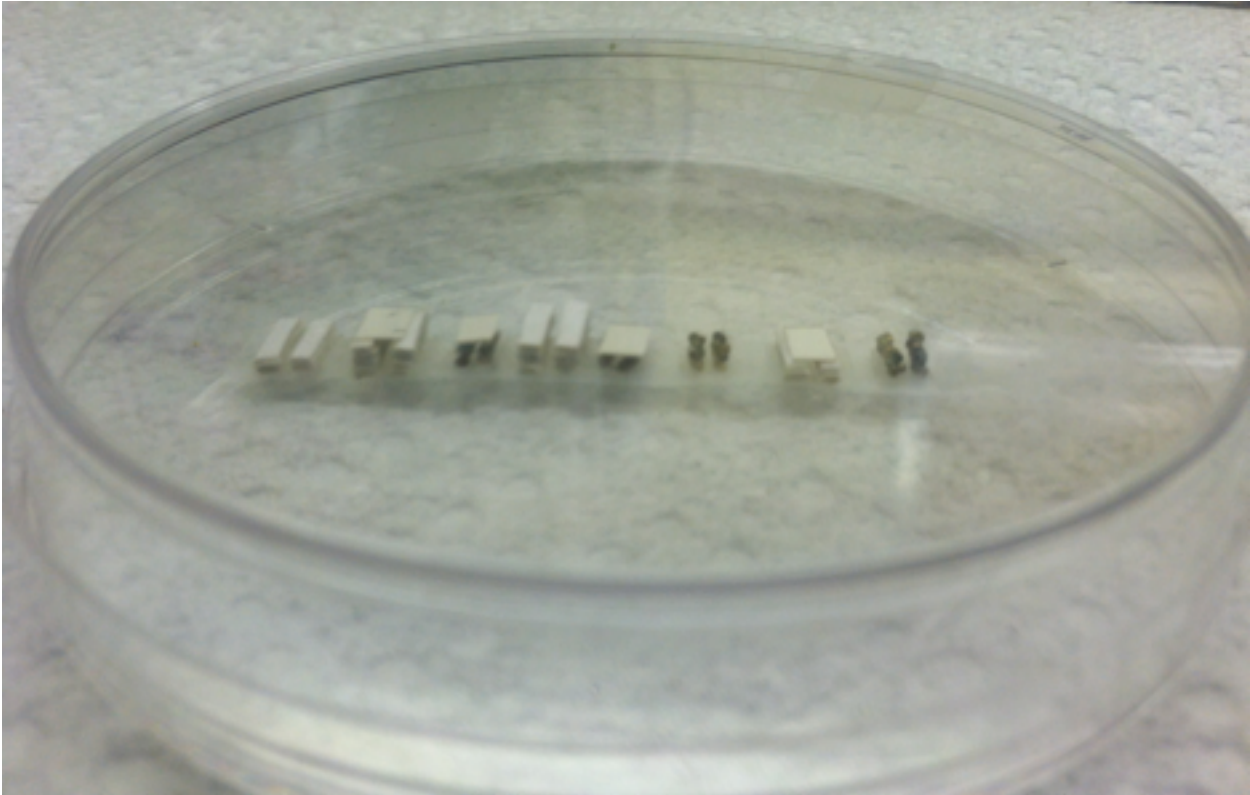
**B.**



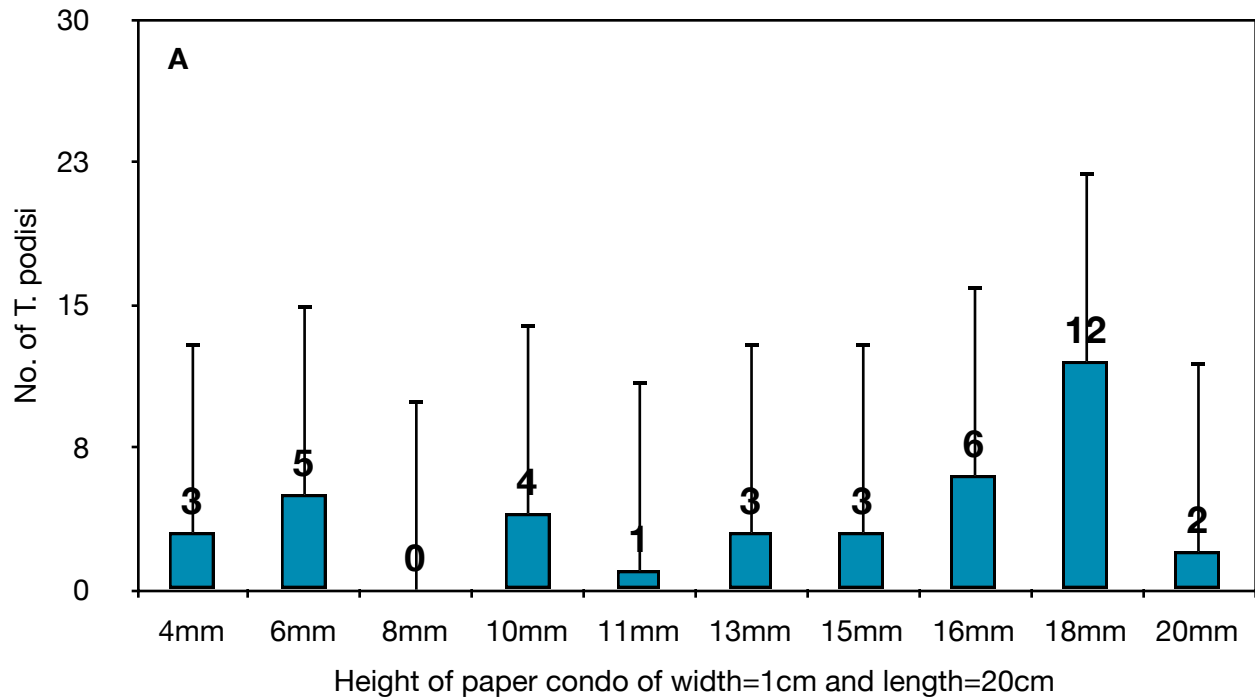
**Fig 5. A.** Vertical gap and material preference by *Telenomus podisi* females (2-day old; mated; starved) for refuge when exposed to overwintering conditions (5°C; 10h photophase; 75% R.H.). O = no top on two walls separated by 1cm and constructed of either paper or *Podisus maculiventris* eggs; C = top made of appropriate material added to structure. (N = 45; No. of trials = 5). **B.** Picture of experimental arena



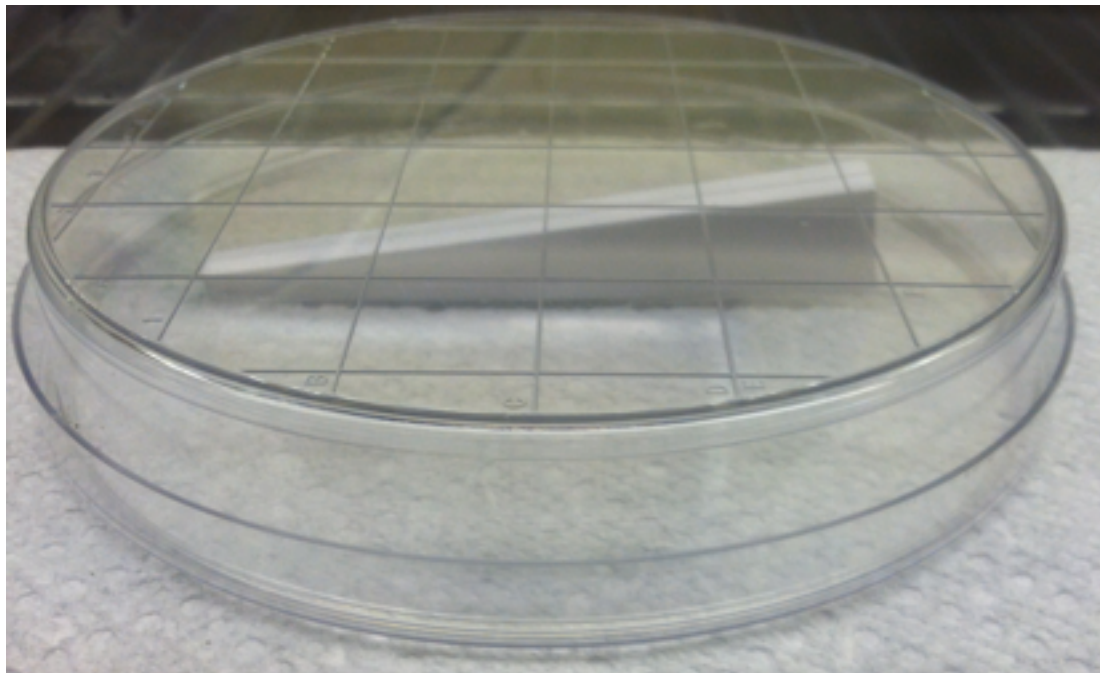
**B.**



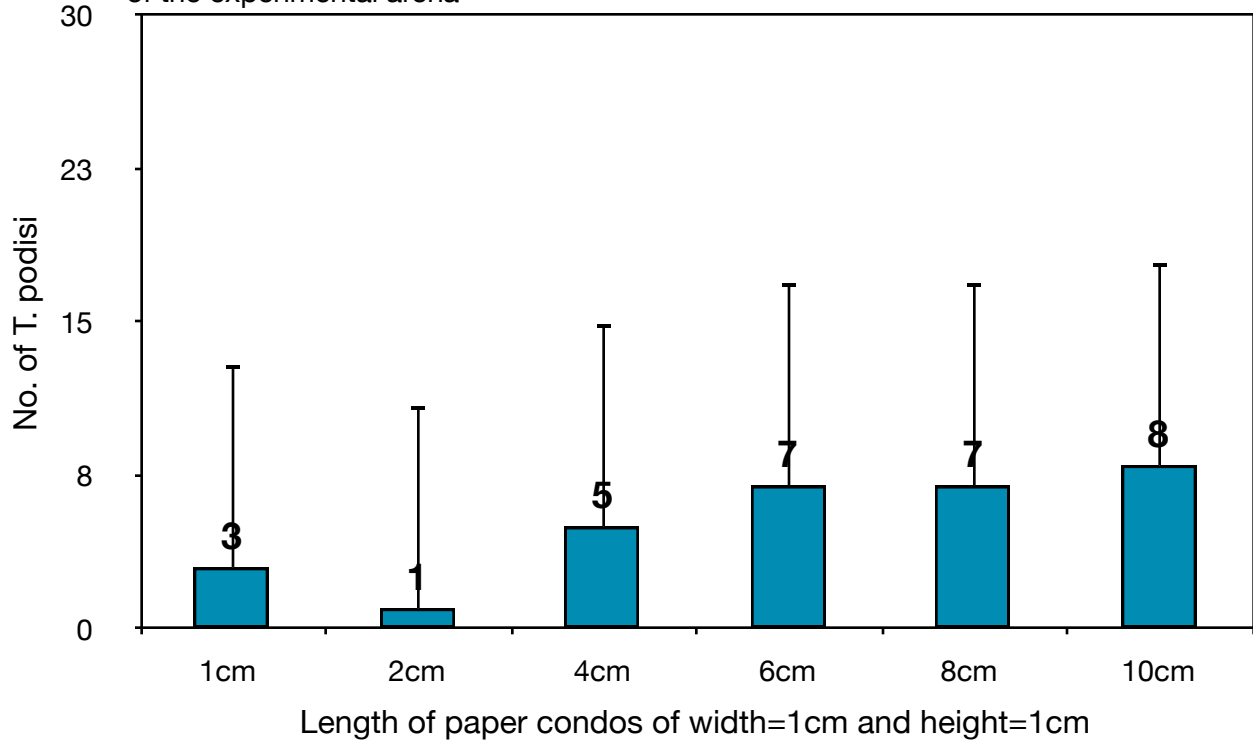
**Fig. 6. A.** Vertical gap and horizontal depth preference by *Telenomus podisi* females (2-day old; mated; starved) for refuge when exposed to overwintering conditions (5°C; 10h photophase; 75% R.H.). Choice consists of a four-walled 20cm long x 1cm wide paper refuge with one end 2mm high and other end 20mm high giving rise to a range of heights every 1 cm from the 2mm end (4.0, 6.0, 8.0, 10.0, 11.0, 13.0, 15.0, 16.0, 18.0, 20.0mm) (N = 39, No. of Trials = 2). **B.** Picture of the experimental arena.



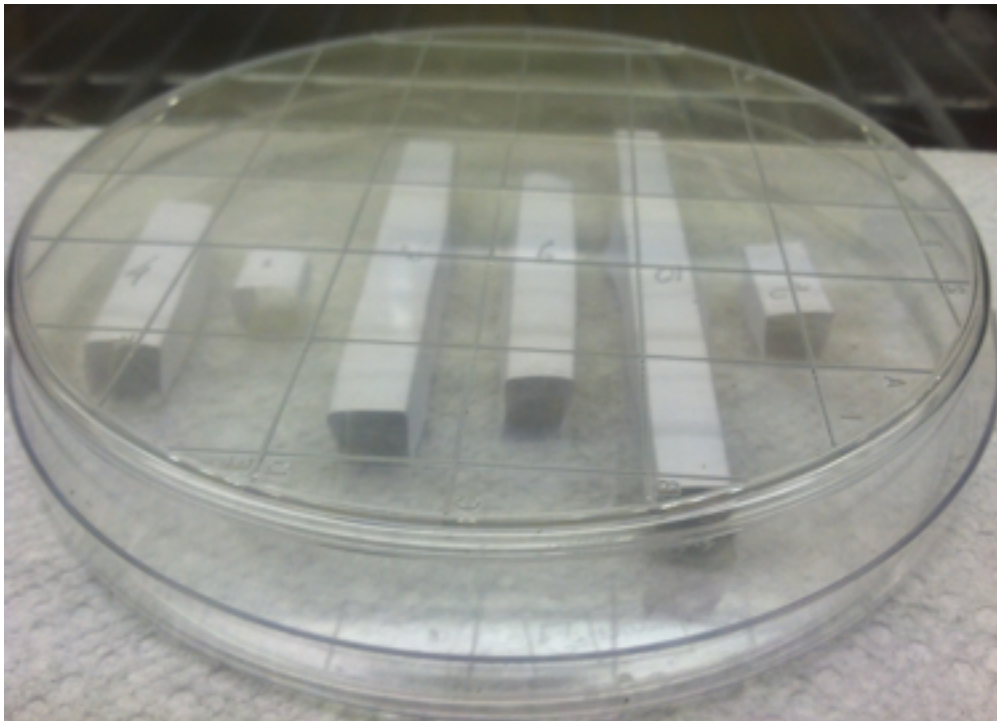
**B.**



**Fig. 7. A.** Depth preference by *Telenomus podisi* females (2-day old; mated; starved) for refuge when exposed to overwintering conditions (5°C; 10h photophase; 75% R.H.). Choice consists of 6, two-walled, 1cm wide and 1cm high paper refuges with varying lengths (1.0, 2.0, 4.0, 6.0, 8.0, 10.0 cm). (N = 31, No. of Trials = 2). **B.** Picture of the experimental arena



**B.**





**Fig. 8:** Experimental cage based on Witting-Bissinger *et al.* (2008) for fecundity and longevity study on *Telenomus podisi*.





**Fig. 9. (A-E).** Effect of different diets on fecundity and longevity of 2-day old mated *Telenomus podisi* females when fed with: A- Honeydew from Cowpea Aphids on Fava bean plants, B- Buckwheat nectar, C- Clover honey, D- Organic Clover honey & E - Water.

