

Figure 1. Above ground cover crop and weed biomass collected in 2012 and 2013.

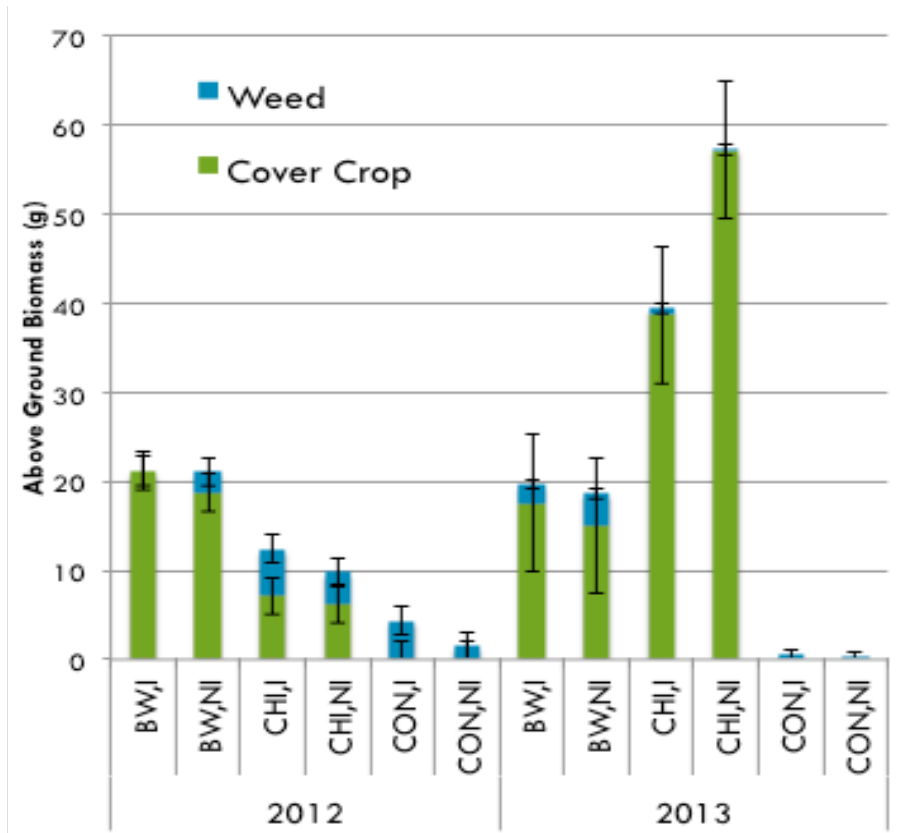


Figure 2. Midday stem water potentials in 2012 and 2013. Black arrows indicate irrigation events.

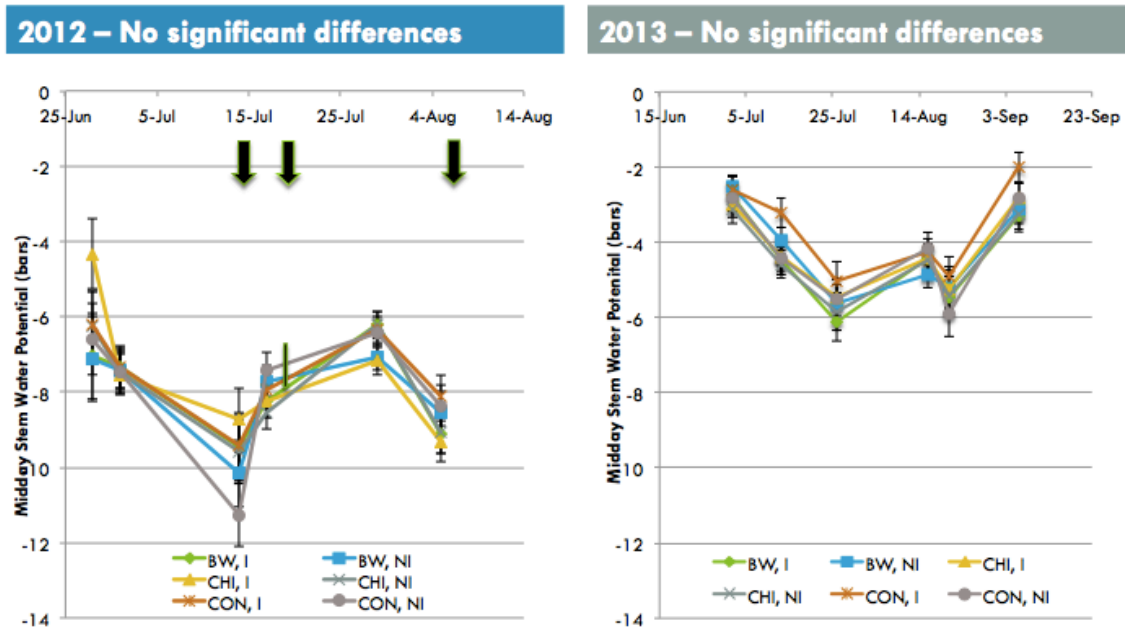


Table 1. Yield components in 2012 and 2013.

Treatment	Clusters per Vine		Yield per Vine (kg)		Cluster Weight (g)	
	2012	2013	2012	2013	2012	2013
BW	61.31	101.11	4.49	7.34 a	70.48	72.10 a
CHI	68.73	94.34	5.26	5.41 b	74.31	56.48 b
CON	64.40	102.95	4.57	7.44 a	69.38	75.07 a
P-Value	0.44	0.07	0.04	0.007	0.63	0.002
Treatment	Berries per Cluster		Berry Weight (g)		Ravaz Index	
	2012	2013	2012	2013	2012	2013
BW	47.63	44.78 a	1.48	1.60 a	6.17	TBD
CHI	48.10	39.18 b	1.90	1.48 b	7.84	
CON	47.91	45.27 a	1.50	1.66 a	6.34	
P-Value	0.96	0.006	0.95	0.008	0.21	